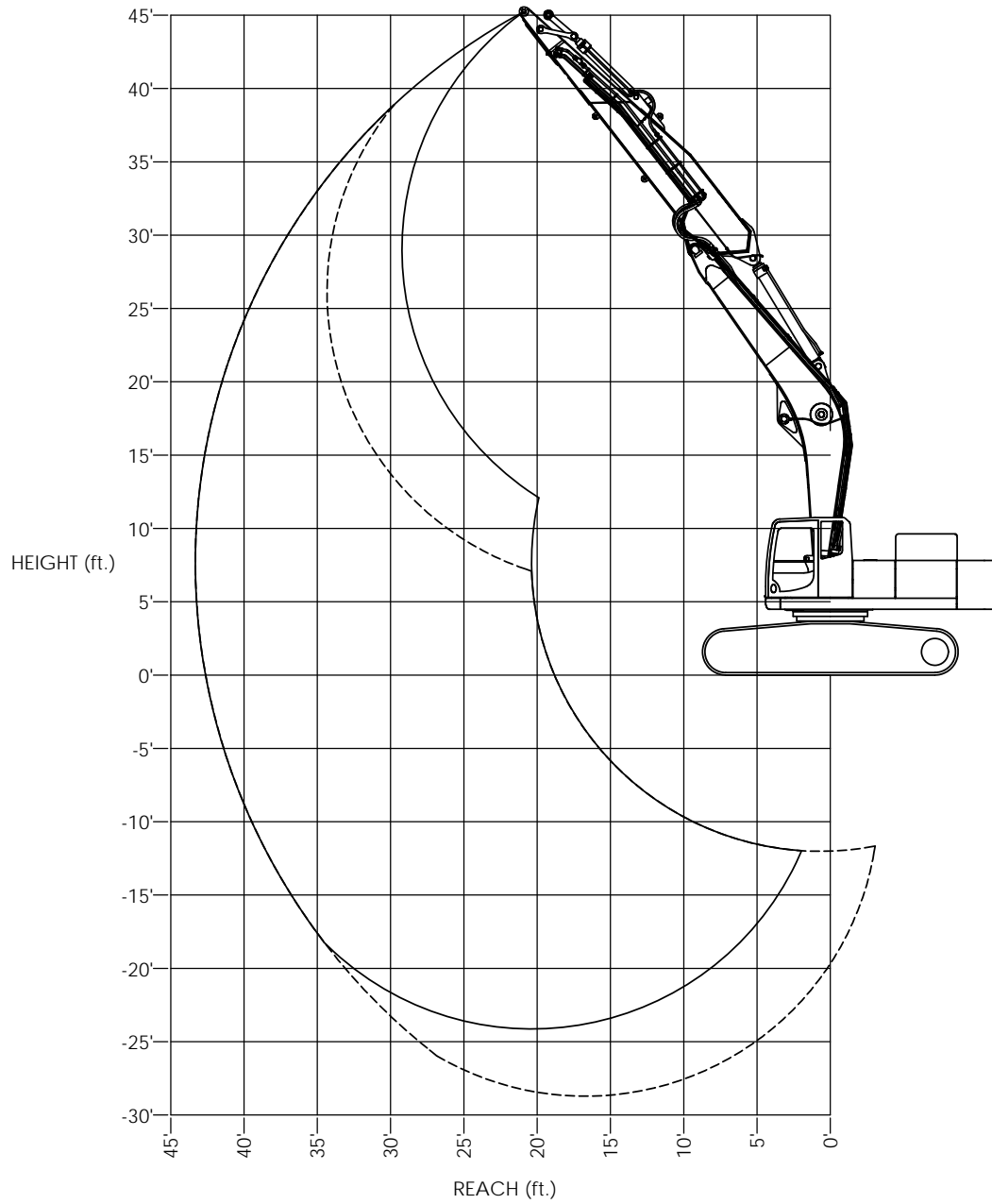


REVISIONS				
ZONE	REV.	DESCRIPTION	DATE	APPROVED



CONFIGURATION:
 -SK500LC-9 - 23'-0" BOOM (WITH DUEL PIN
 POSITIONS FOR BOOM CYLINDERS)
 -20' STICK WITH SK350 TIP

----- HOIST CYLINDERS ON UPPER PIVOT
 _____ HOIST CYLINDERS ON LOWER PIVOT

MATERIAL:		



4805 SCOOPY LANE NW
 CARROLL, OHIO 43112
 740-654-5304

The Cutting Edge of Customer Service

<small>PROPRIETARY AND CONFIDENTIAL THE INFORMATION CONTAINED HEREIN IS THE SOLE PROPERTY OF COMPANY WRENCH. ANY REPRODUCTION OR DISSEMINATION OF THIS INFORMATION WITHOUT THE WRITTEN PERMISSION OF COMPANY WRENCH IS PROHIBITED.</small>	<small>UNLESS OTHERWISE SPECIFIED DIMENSIONS TO DIMENSIONS ARE AS FOLLOWS:</small>	TITLE:
	<small>DECIMAL: .0001" FRACTIONAL: 1/16" ANGLE: .1°</small>	SK500LC-9 - 20' STICK RANGE
<small>WEIGHT: #</small>	<small>SCALE: 1:48</small>	<small>SIZE: D</small>
<small>SHEET 1 OF 1</small>	<small>DWG./PART NO.</small>	

Lifting Capacities

P/N: 0M14527-5



SK500LC-9
DUAL PIN BOOM
20' ARM W/ SK350 TIP

Lift capacities calculated at attachment pivot point on stick (lbs).
No attachment on stick. Attachment weight must be subtracted.

HOIST CYLINDERS ON LOWER PIVOT														
REACH														
40'		35'		30'		25'		20'		15'		10'		
Side	Front	Side	Front	Side	Front	Side	Front	Side	Front	Side	Front	Side	Front	
														45'
														40'
				* 18,967	* 18,967									35'
		14,494	* 17,740	* 17,168	* 17,168									30'
		14,544	* 17,538	* 15,953	* 15,953									25'
11,197	* 16,768	14,328	* 17,488	* 15,684	* 15,684									20'
11,042	* 17,885	13,954	* 18,225	* 16,654	* 16,654	* 14,083	* 14,083							15'
10,791	18,370	13,491	* 19,981	17,220	* 19,357	* 17,895	* 17,895							10'
10,517	18,074	13,008	22,167	16,445	* 24,531	21,487	* 27,422							5'
10,282	17,819	12,573	21,690	15,750	* 26,602	20,388	* 32,021	27,807	* 40,644					0'
10,154	17,681	12,250	21,335	15,220	26,652	19,578	* 33,144	26,592	* 42,361					-5'
		12,096	21,166	14,907	26,302	19,102	* 32,757	25,950	* 41,793	39,269	* 44,803	* 22,032	* 22,032	-10'
		12,217	* 18,001	14,857	* 24,146	18,966	* 30,424	25,793	* 38,732	39,238	* 51,176	* 33,887	* 33,887	-15'
				15,174	* 18,491	19,198	* 25,278	26,081	* 32,567	39,780	* 42,226	* 50,878	* 50,878	-20'
														-25'

HOIST CYLINDERS ON UPPER PIVOT														
REACH														
40'		35'		30'		25'		20'		15'		10'		
Side	Front	Side	Front	Side	Front	Side	Front	Side	Front	Side	Front	Side	Front	
														45'
														40'
														35'
		14,494	* 15,621											30'
		14,544	* 15,083											25'
11,197	* 16,356	14,328	* 15,513											20'
11,042	* 16,657	13,954	* 16,532											15'
10,791	* 17,384	13,491	* 17,926	17,220	* 18,966									10'
10,517	18,074	13,008	* 19,479	16,445	* 21,404	21,487	* 24,485							5'
10,282	17,819	12,573	* 20,961	15,750	* 23,710	20,388	* 28,028	27,807	* 35,394					0'
10,154	17,681	12,250	21,335	15,220	* 25,571	19,578	* 30,796	26,592	* 39,404					-5'
		12,096	21,166	14,907	26,302	19,102	* 32,474	25,950	* 41,593	39,269	* 44,803	* 22,032	* 22,032	-10'
		12,217	21,299	14,857	26,245	18,966	* 32,758	25,793	* 41,845	39,238	* 56,902	* 33,887	* 33,887	-15'
				15,174	* 24,371	19,198	* 31,039	26,081	* 39,758	39,780	* 53,341	* 50,878	* 50,878	-20'
						19,990	* 25,254	26,899	* 33,989	40,949	* 45,519	* 65,461	* 65,461	-25'

The following notes pertain to this machine equipped with 35.5" wide track pads:

1. Do not attempt to lift or hold any load that exceeds these rated values at their specified load radii and heights.
2. The least stable position is over the side.
3. The operator should be fully acquainted with machine operation before operating the machine.
4. Lifting capacities assume a machine standing on level, firm and uniform supporting surface. Operator must make allowance for job conditions such as soft or uneven ground, out of level conditions, side loads, sudden stopping of loads, hazardous conditions, inexperienced personnel, etc.
5. The above theoretical ratings are based on calculations derived from standard O.E.M. lift charts. They do not exceed 87% of hydraulic lifting capacity or 75% of tipping capacity. Rated loads marked with an asterisk (*) are limited by hydraulic lifting capacity.