

MATERIAL HANDLER

ECO
MODE
READY



Specifications

Standard Machine Weight	75,000 lbs 34 t
Engine output	215 hp 160 kW
Reach	Up to 52.5 ft 16 m

Features

- ▶ Fuel saving ECO & ECO+ operating modes enhance flexibility while reducing operating costs
- ▶ Fuel efficient high output engine with a reduction in emissions to comply with Tier 4i (Stage III B) standards
- ▶ Powerful 215 hp | 160 kW turbo diesel engine and high performance hydraulic system allows for loading and unloading with speed and precision
- ▶ New wide-screen multi-function color display with integrated rear camera view
- ▶ Hydraulically elevating cabin with conveniently located user-friendly operator controls

SPECIFICATIONS

ENGINE

Manufacturer and model	Deutz TCD 6.1 L6
Configuration	6-cylinder inline
Engine management system	EMR IV
Type	4-stroke diesel, common rail direct injection, turbocharger, controlled exhaust gas recirculation, diesel particulate filter with automatic regeneration
Engine output power	215 hp 160 kW
Nominal speed	2000 min ⁻¹
Displacement	370 in ³ 6.1 L
Cooling system	Coolant / charge air cooling with fan speed control system; optional reversing function
Emission standard	EPA Tier 4i / III B
Air filter design	Two-stage filter with safety cartridge and pre-separator with discharge valve
Fuel tank capacity	100 gal 380 L
Operating Modes:	
Power Mode	Optimal power and speed for heavy duty applications
ECO Mode	Fuel consumption reduced for medium duty applications
ECO+ Mode	Fuel consumption optimized for light duty applications

ELECTRICAL SYSTEM

Alternator	28 V / 100 A
Operating voltage	24 V
Battery	2 x 12 V / 110 Ah / 760 A (in accordance with EN standards)
Lighting set	2 x H3 headlamps, turn indicators and tail lights
Generator	20 kW DC generator with controls and insulation monitoring, driven by V-belt direct from diesel engine

TRAVEL DRIVE

Hydrostatic travel drive via infinitely variable axial piston motor with directly mounted travel brake valve, two-speed power shift gear, 4-wheel drive	
Maximum speed, 1st gear	3.1 mph 5 km/h
Maximum speed, 2nd gear	12.4 mph 20 km/h
Gradeability	39% max
Turning radius	28.5 ft 8.7 m

SWING DRIVE

Swing gear	Double row, internally geared ball-race slewing ring
Drive	3-stage planetary gear with integrated multi-disc brake
Upper carriage swing speed	Infinitely variable from 0 - 7 rpm
Swing brake	Electrically operated

BRAKE SYSTEM

Service brake	Hydraulic single circuit braking system acting on all four wheel pairs
Parking brake	Electrically operated disc brake at transmission, acting on both axles



ELECTRIC DRIVE

Electric drive machine options are available in a variety of stationary or semi-mobile configurations tailored according to customer requirements

UNDERCARRIAGE

Front axle	Rigid axle with integral drum brake, planetary drive, max. steering angle: 27°
Rear axle	Oscillating axle with integral drum brake and selectable oscillation lock, planetary drive
Support	4-point stabilizer system
Tires	Solid rubber, 8-ply 12.00-20

HYDRAULIC SYSTEM

LINDE mobile hydraulic system with load limit control and fuel-saving power demand control. Separate hydraulic oil cooler, temperature-controlled fan speed, with optional reversing function

Maximum Pump Capacity	2 x 87 g/min 2 x 330 L/min
Maximum Operating Pressure	4,641/5,149 psi 320/355 bar
Hydraulic Oil Tank	87 gal 330 L

OPERATOR CAB

Infinitely variable hydraulic height-adjustment with eye level up to 18.4 ft | 5.60 m above ground. Flexibly mounted. Sound-insulated; heat-insulating glass windows for optimum view; windshield with pull-down sunblind that slides under the cab roof; viewing window on cab roof; sliding window in cab door; height and tilt-adjustable steering column.

Heating	Infinitely variable heating with 3-speed fan, 6 adjustable defroster nozzles (hot water system)
Operator's Seat: Air-cushioned comfort seat with integrated headrest, safety belt and lumbar support, seat heating with integrated A/C function optional. Seat position, seat inclination and seat cushion multi-adjustable in line with position of armrests and pilot control units, allowing comfortable operation	
Monitoring Ergonomic, glare-free instrument layout, multi-function display; automatic monitoring; warning and storage of deviating operating conditions, e.g. filter pressure monitoring with warning indicator or shutdown of pilot controls, warning or shutdown of pilot controls when exceeding maximum hydraulic fluid temperature, diesel particulate filter indicator, rear-view camera	
Air conditioning	Automatic
Noise level	(guaranteed) in accordance with directive 2000/14 EC $L_{W(A)} = 101 \text{ dB(A)}$ max allowable under 2000/14 EC $L_{W(A)} = 104 \text{ dB(A)}$
Vibrations: Weighted r.m.s. value of acceleration of upper limbs is below 8.2 f/s^2 2.5 m/s^2 . Weighted r.m.s. value of acceleration for seat area and feet is below 1.6 f/s^2 0.5 m/s^2 .	

EQUIPMENT

MHL350 E

EQUIPMENT SERIES OPTION

20 kW DC generator with controls and insulation monitoring	●
Close proximity range limiter for dipper stick	●
Coolant and hydraulic oil level monitoring system	●
Filter system for attachments	●
Hose rupture protection for lift cylinders	●
Hose rupture protection for dipperstick cylinders	●
Overload warning device	●
Quick coupling on dipperstick	●
Cut-off ball valve on dipperstick	●
Dipperstick impact protection	●
Cyclonic pre-separator for air-filter	●
Float switch	●
Joystick steering	●
Central lubrication system for quick change hitch suspension	●
H3 headlamps	●
H3 worklights on boom and dipperstick (up to 4)	●
Xenon worklights on boom and dipperstick (up to 2)	●
Front-mounted Xenon worklights (up to 2)	●
Xenon worklights on cab roof (up to 4)	●

UNDERCARRIAGE SERIES OPTION

4-wheel differential drive	●
Drum brakes	●
Rear axle oscillating lock	●
2-speed powershift transmission	●
4-point stabilizers	●
Stabilizer cylinders with integrated two-way check valves	●
Piston rod protection on stabilizer cylinders	●
Stabilizer plates 16.9 x 23.6 in (430 x 600 mm)	●
4-point stabilizers, individually controllable	●
Dozer blade with plastic or Hardox edge (in addition to 4-pt stabilizers)	●
Tool box	●
Special paint	●

ATTACHMENTS SERIES OPTION

Open-tine grapple	●
Half-closed grapple	●
Mag grapple combination	●
Magnet plate	●
Scrap shear	●
Clamshell bucket	●
Log heel	●
Log grapple	●
Pipe handler	●
Load hook	●

ENGINE SERIES OPTION

Exhaust gas turbocharger	●
Charge air cooling	●
Direct electronic fuel injection/ common rail	●
Automatic idle	●
Engine diagnostics interface	●
System-controlled fan drive with fan speed monitoring	●

CAB SERIES OPTION

Cab elevation system	●
Safety glass	●
Hinged windscreen	●
Sliding window in cab door	●
Glazed roof panel	●
Hinged roof opening	●
Armoured glass (windscreen and roof panel)	●
Windscreen washer system	●
Washer system installed underneath windscreen	●
Air-cushioned operator seat with headrest, seatbelt, and lumbar support	●
Seat heating with integrated a/c function	●
Steering column, height and tilt adjustable	●
Automatic air conditioning system	●
Independent heating system	●
Multi-function display	●
Document clip	●
Protective grilles to front and roof	●
12V transformer	●
Radio CD player	●
12V power outlet	●
Fire extinguisher, dry powder	●
Rotating beacon	●

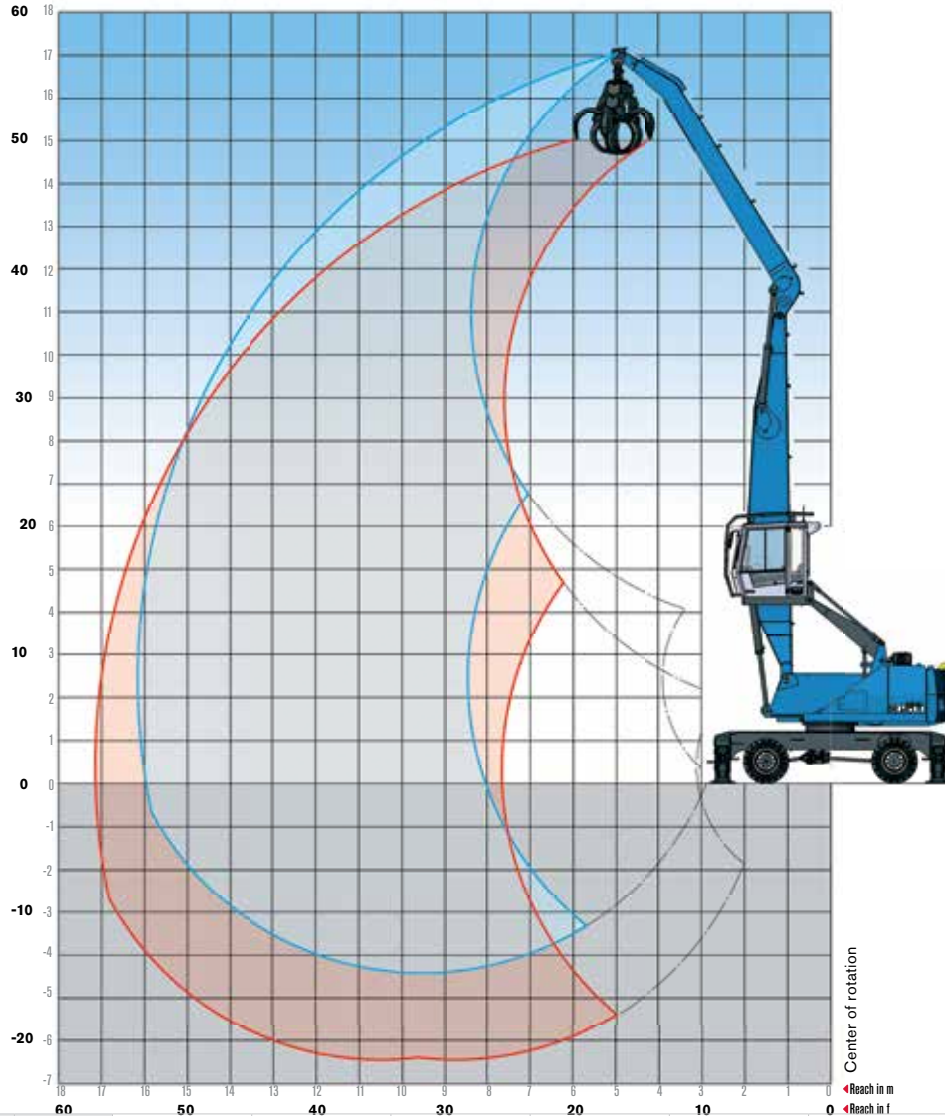
SUPERSTRUCTURE SERIES OPTION

Separate cooling systems (for engine and hydraulic oil)	●
Cooling system fan speeds controlled by operating parameters	●
Fan drive reversing function	●
Lockable maintenance hatches, with gas struts	●
Automatic central lubrication system	●
Rear view camera	●
Reversing alarm	●
Electric refuelling pump	●
Lighting protection	●
Special paint	●

WORKS FOR YOU.™

WORKING RANGES AND LIFTING CAPACITIES **MHL350 E**

Height in ft | m



Reach 52.5 ft | 16 m

Work equipment:
Box-type boom 27.9 ft | 8.5 m
Dipperstick 23.6 ft | 7.2 m

Attachment options:



HEIGHT ft	HEIGHT m	REACH ft	19.7	24.6	29.5	34.4	39.4	44.3	49.2
		REACH m	6	7.5	9	10.5	12	13.5	15
			9,259* 4.2*						
54.1	16.5			10,141* 4.6*	7,725* 3.3*				
49.2	15				10,362* 4.7*	7,716* 3.5*			
44.3	13.5				11,905* 5.4*	10,141* 4.6*	7,055* 3.2*		
39.4	12				13,007* 5.9*	11,684* 5.3*	9,480* 4.3*	5,732* 2.6*	
34.4	10.5				13,669* 6.2*	12,346* 5.6*	11,244* 5.1*	8,157* 3.7*	
29.5	9			15,873* 7.2*	14,100* 6.4*	12,566* 5.7*	11,244* 5.1*	9,480 4.3	6,173* 2.8*
24.6	7.5			17,196* 7.8*	14,771* 6.7*	13,007* 5.9*	11,244 5.1	9,259 4.2	7,716 3.5
19.7	6								
14.8	4.5	22,267* 10.1*	23,369* 10.6*	18,519* 8.4*	15,653* 7.1*	13,448* 6.1*	11,023 5.0	9,039 4.1	7,496 3.4
9.8	3	37,258* 16.9*	25,794* 11.7*	19,842* 9.0*	16,314* 7.4*	13,007 5.9	10,582 4.8	8,818 4.0	7,496 3.4
4.9	1.5	11,684* 5.3*	27,558* 12.5*	20,723* 9.4*	15,873 7.2	12,566 5.7	10,362 4.7	8,598 3.9	7,275 3.3
0	0	8,378* 3.8*	20,283* 9.2*	19,621 8.9	15,212 6.9	12,125 5.5	9,921 4.5	8,378 3.8	7,275 3.3
-4.9	-1.5	8,598* 3.9*	15,653* 7.1*	19,180 8.7	14,771 6.7	11,905 5.4	9,700 4.4	8,378 3.8	7,055 3.2
-9.8	-3		14,991* 6.8*	18,298* 8.3*	14,330 6.5	11,684 5.3	9,700 4.4	7,937* 3.6*	

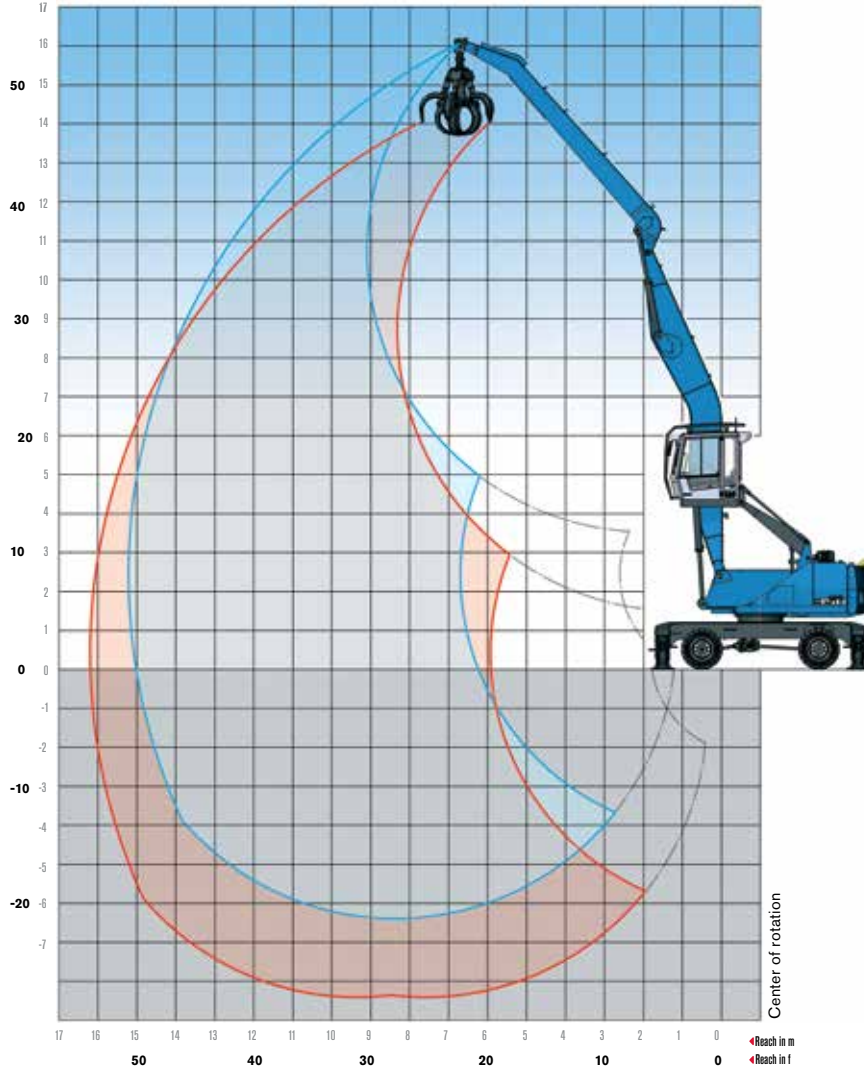
Capacity values are stated in pounds | metric tons. The pump pressure is 5,221 psi | 360 bar. The values, in accordance with ISO 10567, represent 75% of the static tipping load or 87% of the hydraulic lifting force (marked *). Values apply to 4-pt supported slewing operations over 360 degrees on a firm and level surface.

The weight of the attached hoisting equipment (coupler, grapple, magnet, clamshell, load hook etc.) must be deducted from the capacity values in accordance with CE guidelines, hose-rupture protection valves on the lift cylinders and an overload warning device are required for crane operations.

WORKS FOR YOU.™

WORKING RANGES AND LIFTING CAPACITIES

Height in ft | m



Reach 52.5 ft | 16 m

Work equipment:
Cranked boom 27.9 ft | 8.5 m
Dipperstick 23.6 ft | 7.2 m

Attachment options:



HEIGHT ft	HEIGHT m	REACH ft	19.7	24.6	29.5	34.4	39.4	44.3	49.2
		REACH m	6	7.5	9	10.5	12	13.5	15
49.2	15				5,732* 2.6*				
44.3	13.5					6,393* 2.9*			
39.4	12					9,039* 4.1*	5,952* 2.7*		
34.4	10.5					9,480* 4.3*	8,378* 3.8*	4,409* 2.0*	
29.5	9					9,480* 4.3*	9,039* 4.1*	7,055* 3.2*	
24.6	7.5					9,921* 4.5*	9,259* 4.2*	8,818* 4.0*	4,189* 1.9*
19.7	6				11,464* 5.2*	10,362* 4.7*	9,700* 4.4*	9,039* 4.1*	6,173* 2.8*
14.8	4.5			14,551* 6.6*	12,566* 5.7*	11,023* 5.0*	10,141* 4.6*	9,259* 4.2*	7,496* 3.4*
9.8	3	30,203* 13.7*	21,164* 9.6*	16,535* 7.5*	13,669* 6.2*	11,905* 5.4*	10,582* 4.8*	9,039 4.1	7,716 3.5
4.9	1.5	14,110* 6.4*	24,251* 11.0*	18,298* 8.3*	14,771* 6.7*	12,566* 5.7*	10,582 4.8	8,818 4.0	7,496 3.4
0	0	9,700* 4.4*	22,046* 10.0*	19,621* 8.9*	15,432 7.0	12,346 5.6	10,141 4.6	8,598 3.9	7,275 3.3
-4.9	-1.5	9,921* 4.5*	16,755* 7.6*	19,180 8.7	14,991 6.8	12,125 5.5	9,921 4.5	8,378 3.8	7,275* 3.3*
-9.8	-3	10,362* 4.7*	15,432* 7.0*	18,960 8.6	14,551 6.6	11,684 5.3	9,700 4.4	8,378* 3.8*	4,850* 2.2*
-14.8	-4.5		15,432* 7.0*	18,739 8.5	14,551 6.6	11,684 5.3	9,700 4.4	8,378 3.8	
-19.7	-6			17,637* 8.0*	14,330* 6.5*	11,684 5.3			



Capacity values are stated in pounds | metric tons. The pump pressure is 5,221 psi | 360 bar. The values, in accordance with ISO 10567, represent 75% of the static tipping load or 87% of the hydraulic lifting force (marked *). Values apply to 4-pt supported slewing operations over 360 degrees on a firm and level surface.

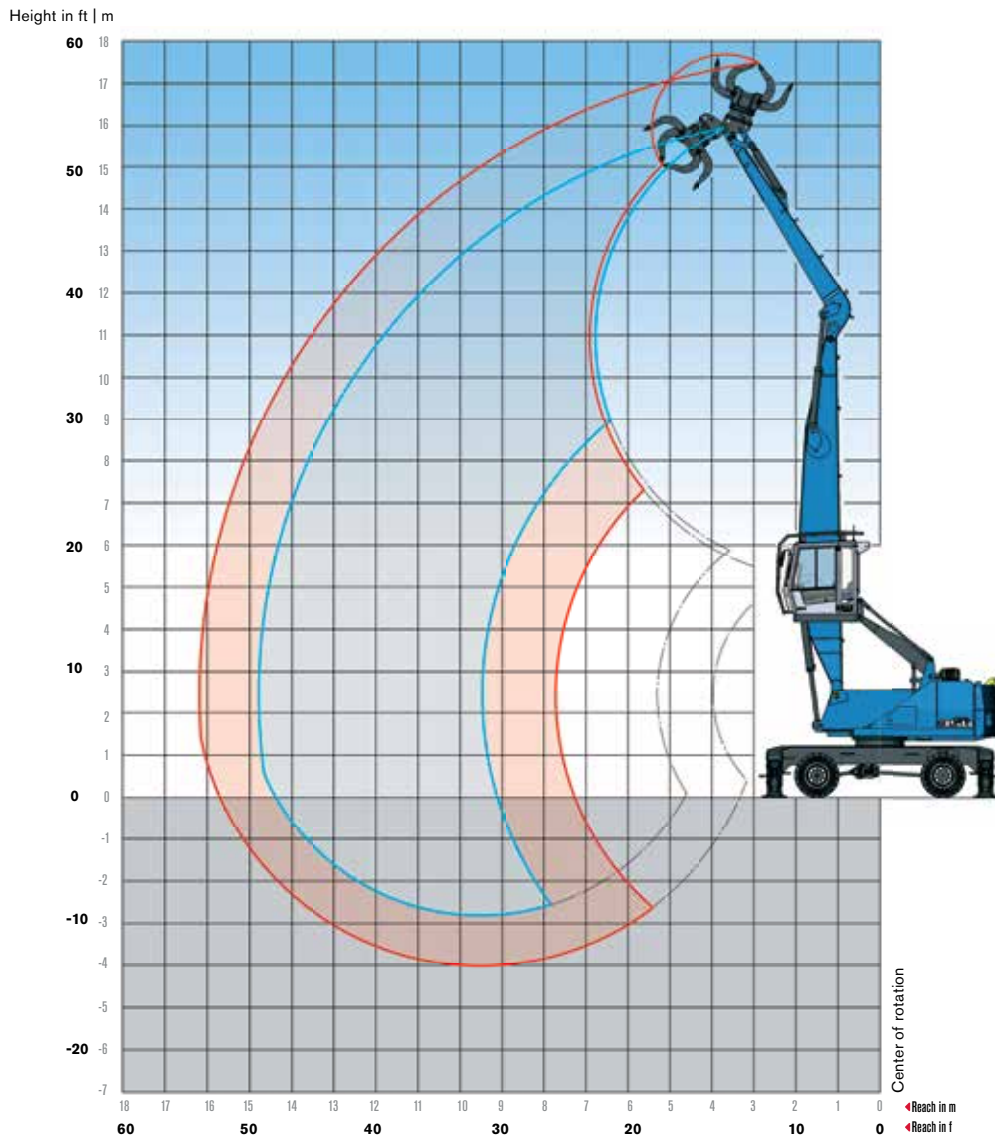
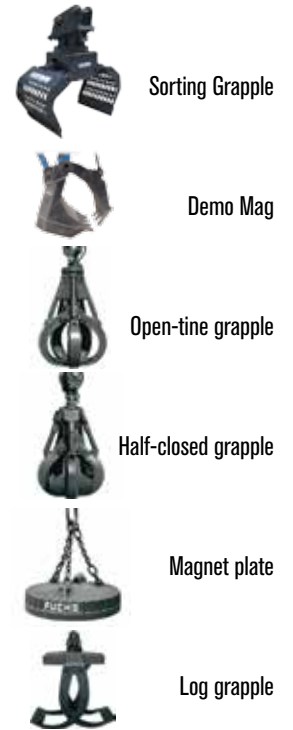
The weight of the attached hoisting equipment (coupler, grapple, magnet, clamshell, load hook etc.) must be deducted from the capacity values in accordance with CE guidelines, hose-rupture protection valves on the lift cylinders and an overload warning device are required for crane operations.

MHL350 E

Reach 48.2 ft | 14.7 m

Work equipment:
 Box-type boom 27.9 ft | 8.5 m
 Universal stick 18.4 ft | 5.6 m

Attachment options:



HEIGHT ft	HEIGHT m	REACH ft	19.7	24.6	29.5	34.4	39.4	44.3
		REACH m	6	7.5	9	10.5	12	13.5
49.2	15		10,141* 4.6*					
44.3	13.5			11,905* 5.4*				
39.4	12			14,771* 6.7*	12,125* 5.5*	7,496* 3.4*		
34.4	10.5			16,755* 7.6*	14,551* 6.6*	11,905* 5.4*	5,732* 2.6*	
29.5	9			17,196* 7.8*	14,771* 6.7*	13,007* 5.9*	10,362* 4.7*	
24.6	7.5		21,826* 9.9*	17,857* 8.1*	15,212* 6.9*	13,007* 5.9*	10,803* 4.9*	6,614* 3.0*
19.7	6	30,203* 13.7*	23,810* 10.8*	18,739* 8.5*	15,653* 7.1*	13,228* 6.0*	10,582* 4.8*	8,598* 3.9*
14.8	4.5	37,699* 17.1*	26,015* 11.8*	19,842* 9.0*	16,314* 7.4*	12,787* 5.8*	10,362* 4.7*	8,598* 3.9*
9.8	3		27,588* 12.5*	20,503* 9.3*	15,653* 7.1*	12,346* 5.6*	10,141* 4.6*	8,378* 3.8*
4.9	1.5		16,755* 7.6*	19,621* 8.9*	14,991* 6.8*	11,905* 5.4*	9,921* 4.5*	8,157* 3.7*
0	0		13,448* 6.1*	18,960* 8.6*	14,551* 6.6*	11,684* 5.3*	9,700* 4.4*	8,157* 3.7*
-4.9	-1.5		13,669* 6.2*	17,857* 8.1*	14,330* 6.5*	11,464* 5.2*	9,480* 4.3*	

Capacity values are stated in pounds | metric tons. The pump pressure is 5,221 psi | 360 bar. The values, in accordance with ISO 10567, represent 75% of the static tipping load or 87% of the hydraulic lifting force (marked *). Values apply to 4-pt supported slewing operations over 360 degrees on a firm and level surface.

The weight of the attached hoisting equipment (coupler, grapple, magnet, clamshell, load hook etc.) must be deducted from the capacity values in accordance with CE guidelines, hose-rupture protection valves on the lift cylinders and an overload warning device are required for crane operations.

WORKS FOR YOU.™



TEREX® | FUCHS



TelematicsSYSTEM

CONNECTS FOR YOU

The new Terex Fuchs Telematics system available on E series machines* offers a modern solution to help you analyze and optimize the efficiency of your machines. The Terex Fuchs Telematics system records and communicates valuable information on the operating status of each individual machine. Where are the machines? How are they working? Is a service check pending? Take advantage of this advanced software and get a handle on your fleet management with the tool that connects for you.



Mobile		MHL320	MHL331	MHL335	MHL340	MHL345	MHL350	MHL355	MHL360	MHL365	MHL380	MHL385
	TIER 3 TIER 4i [kW]	85/-	114/115	114/115	128/129	128/129	148/160	148/160	186/190	186/190	273/-	273/-
	[hp]	114/-	153/154	153/154	172/173	171/172	199/215	199/216	249/255	249/255	366/-	366/-
	Electric Drive [kW]	100	132	132	132	132	155	155	184	184	279	279
	[hp]	134	177	177	177	177	208	208	246	246	374	374
	[m]	8.2-10.4	8.2-10.4	10.7-12.0	12.2-13.7	12.2-13.7	14.0-16.0	14.0-17.0	16.5-18.0	16.5-19.0	18.5-22.0	18.5-23.0
	[ft]	26.9-34.1	26.9-34.1	35.1-39.4	40.0-45.0	40.0-45.0	45.9-52.5	45.9-55.7	54.1-59.1	54.1-62.3	60.7-72.2	60.6-75.4
	up to [t]	19.0	23.5	25.0	29.0	30.0	35.5	38.0	46.8	55.0	67.0	73.5
	up to [lbs]	41,887	51,809	55,116	63,934	66,139	78,264	83,776	101,413	121,254	147,709	162,039
Crawler		RHL320	RHL331	RHL335	RHL340	RHL345	RHL350	RHL355	RHL360	RHL365	RHL380	RHL385
	up to [t]	24	30.5	30.5	38	40	41.5	48	64.0	65.0	76.0	-
	up to [lbs]	52,911	67,241	67,241	83,776	88,185	91,492	105,822	119,049	143,300	167,551	-

www.terex.com/construction

*Effective production date June 2014

Effective Date: August 2014. Product specifications and prices are subject to change without notice or obligation. The photographs and/or drawings in this document are for illustrative purposes only. Refer to the appropriate Operator's Manual for instructions on the proper use of this equipment. Failure to follow the appropriate Operator's Manual when using our equipment or to otherwise act irresponsibly may result in serious injury or death. The only warranty applicable to our equipment is the standard written warranty applicable to the particular product and sale and Terex makes no other warranty, express or implied. Products and services listed may be trademarks, service marks, or trade names of Terex Corporation and/or its subsidiaries in the USA and other countries. All rights are reserved. © 2014 Terex Construction. Terex, Terex Fuchs and Works For You trademarks owned or licensed by Terex Corporation or its subsidiaries.

Terex Construction 8800 Rostin Road, Southaven, MS 38671 USA
Tel +1 (888) 90-TEREX www.terex.com/construction



TEREX® | FUCHS

WORKS FOR YOU.™