

GEHL

FULL LINE
COMPACT EXCAVATORS

Z17 | Z27 | Z35 GEN:2 | Z45 GEN:2 | Z80



GET THE SCOOP



In 1859, an agricultural implement company, housed in a blacksmith shop, was started in West Bend, Wisconsin. From these humble beginnings, the Gehl brand has become a major force in the compact equipment industry worldwide.



Since entering the excavator market in 1987, Gehl has worked its tail off to offer a solid line up of compact excavators.

INDUSTRY PROVEN –
Yanmar engines provide reliability, maximum power and proven emissions technology to handle demanding jobs.

TRUE ZERO-TAIL-SWING –
That means no overhang over the tracks on any model in the Gehl product line.

POWER-A-TACH® QUICK COUPLER –
Connect attachments hydraulically from the operators station (*not available on Z17*).

HYDRAULIC THUMB –
Factory-installed hydraulic thumb option adds versatility to the jobsite (*not available on Z17*).



providing an
exceptional
experience

Since the beginning, Gehl has focused on providing solutions to our customer's needs by building quality, reliable products. With a long history of reliability and innovation, Gehl is responsive to the equipment and service needs of our customers.

With modern compact equipment manufacturing facilities in Yankton and Madison, South Dakota, and a state-of-the-art research and design facility in West Bend, Wisconsin, Gehl ensures that they are equipped with the finest in technology, tools and materials. And our top corps of engineers are skilled in designing and enhancing high-quality machines to fit the specific needs of our customers. Our equipment is modern in design and performance, but not too complicated to operate or service.

And when you purchase a piece of Gehl equipment, you have an entire organization behind you and your business. When you need support, whether it be financing, parts or service, know that Gehl will be there to provide an exceptional experience. We continually strive to preserve the level of personalized attention that Gehl began with in 1859.

GEHL



The Gehl Z17 compact excavator is small in size, but big on power. Small enough to maneuver in tight spaces, the Z17 delivers power and hydraulic performance to get the job done quickly and efficiently.

COMPACT POWER – Yanmar 13.5 hp (10.1 kW) Tier IV diesel engine provides the power needed to handle demanding tasks.

ADDED STABILITY – The undercarriage hydraulically extends to 4'2" (1280 mm) for extra stability or retracts to 3'1" (950 mm) to allow access to tight jobsites and for operation in confined spaces.

POWERFUL HYDRAULICS – The hydraulic system is designed to enhance engine performance, resulting in a more efficient system.



HIGH-PERFORMANCE BOOM is constructed with thick side plates and a single-pin mounted design for optimal strength and durability.



ADJUSTABLE BLADE width is easily lengthened or contracted by rotating the blade extensions to match the desired undercarriage width.



ZERO-TAIL-SWING design allows operation near structures or obstacles without causing damage to the upper structure.

SMALL SIZE... BIG POWER



WALK-THROUGH CAB provides easy entry/egress from either side of the machine, easy-to-use controls, an adjustable high-back seat and armrests, and excellent all-around visibility.



EASY SERVICEABILITY and simple daily maintenance checks are achieved through the removable side panels, large rear door and access panel under the operator seat.



EXTRA PROTECTION on the bucket, dipper and boom cylinders is provided by plate spring cylinder guards. The upper structure's lower frame is reinforced by high-strength steel covers.



EXTRA VERSATILITY and productivity on the jobsite is made possible with the optional factory-installed hydraulic thumb attachment.



TRUE ZERO-TAIL-SWING design means no part of the upper structure overhangs the tracks during rotation. Cast side protectors provide added protection at the base of the house.



EASY SERVICE ACCESS is achieved with the large rear door, removable side covers, and removable cover beneath the operator's seat.

MORE WORK IN LESS SPACE

The Gehl Z27 2.7 metric ton compact excavator brings performance and power to cramped worksites. Equipped with a Yanmar Interim Tier IV engine and an advanced hydraulic system, the Z27 compact excavator delivers the power and precision needed for demanding work in a compact package.

POWER-A-TACH® QUICK COUPLER – Change attachments hydraulically with the flip of a switch. The operator leaves the seat only to engage and disengage the safety pin.



ON-DEMAND HYDRAULICS incorporate four hydraulic pumps which require less engine power and provide no loss of hydraulic performance during simultaneous movements.



HIGH-PERFORMANCE BOOM is constructed with thick, reinforced side plates. Heavy-duty cylinder guards shield the cylinders and rods from dirt and damage.



OPERATOR FRIENDLY cab features ergonomic controls and excellent visibility. Optional fully-enclosed cab with heat further enhances operator comfort.



POWER-A-TACH® Quick Coupler allows hydraulic attachment changes with the flip of a switch. The operator leaves the seat only to engage and disengage the safety pin.



TIER IV CERTIFIED 23.9 hp (17.8 kW) electronically controlled Yanmar diesel engine provides 20% less fuel consumption and features an electronic throttle for precise control.



ENHANCED SERVICE ACCESS is achieved with two large rear doors, a swing-open side access panel, and removable covers beneath the operator's seat.

INNOVATIVE DIGGER

The all-new Gehl Z35 GEN:2 compact excavator incorporates innovative design for precise digging performance. An increase in reach at ground level and flat bottom dig depth requires less machine positioning, increasing productivity. The factory installed hydraulic thumb option adds another dimension of adaptability.



DIGITAL OPERATOR INTERFACE – Located in a highly-visible area and backlit for improved visibility, this interface features:

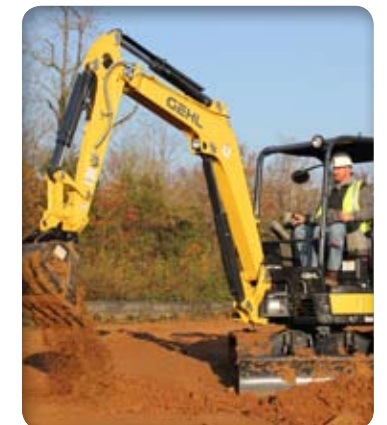
- An hour meter and clock
- Recordable maintenance history with adjustable time intervals and reminders
- Multiple language selections
- Function which records hours used for past 90 days and can be monitored without starting the engine



PROPORTIONAL CONTROLS for auxiliary hydraulics provide smooth, precise hydraulic control for optimal attachment performance.



LARGER CAB features state-of-the-art controls, digital display and excellent visibility. Optional enclosed cab with heat and air-conditioning further enhances operator comfort.



HIGH EFFICIENCY is achieved with ECO mode and auto deceleration. These features improve fuel economy, decrease noise and lower emissions levels by reducing engine speed when not necessary.



Turn to the ALL-NEW high-performing Gehl Z45 GEN:2 4.5 metric ton compact excavator for additional digging force in a zero-tail-swing configuration.

High-performance hydraulics and a powerful Yanmar diesel engine combine to provide the ultimate in effectiveness in a variety of applications.



HYDRAULIC FLOW Four hydraulic pumps provide the ample flow required for smooth operation, even while using the boom and arm simultaneously during turning.



FIRM GRIP Optional hydraulic thumb attachment comes factory installed, adding versatility and enhancing productivity for a wide variety of applications.



TRUE EFFICIENCY ECO mode and auto deceleration improve fuel economy, decrease noise and lower emissions by reducing engine speed when not necessary.

NEW digital operator interface

Located in a highly-visible area and backlit for improved visibility, this interface features:

- Hour meter and clock
- Engine Regeneration Alerts and procedural information
- Recordable maintenance history with adjustable time intervals and reminders
- Multiple language selections
- Function which records hours used for past 90 days and can be monitored without starting the engine



POWER-A-TACH® allows hydraulic attachment changes with the flip of a switch. The operator leaves the seat only to engage and disengage the safety pin.



NEW! YANMAR TIER IV DIESEL ENGINE Powerful, proven Yanmar Tier IV engine offers reliable operation and a fuel efficient system.



EASY SERVICE ACCESS Large, rear hood opens easily to expose the battery, engine oil, air filter and cooling system.

NEW cab features

4-WAY ADJUSTABLE SEAT Fully adjustable seat with retractable belt for custom height, weight and backrest positions.

RADIO READY Speakers are standard with the cab model. One bracket allows simple radio installation.

2-SPEED BUTTON WITH DETENT Upgrading from a pedal, the 2-speed button frees up the operator's feet during travel.



The Gehl Z80 compact excavator brings power and intelligence together in one zero-tail-swing model. Power is provided with a 54.6 hp (40.7 kW) Yanmar Interim Tier IV diesel engine. Intelligence comes with the ECO mode and auto deceleration, improving fuel economy and lowering emission levels.

POWER-A-TACH® QUICK COUPLER – Change attachments hydraulically with the flip of a switch. The operator leaves the seat only to engage and disengage the safety pin.

HIGH STRENGTH BOOM – Constructed with thick side plates and mounted to the upper structure with a solid, single pin for added strength and durability. A heavy-duty cylinder guard protects boom cylinder and rod from damage. An optional factory-installed hydraulic thumb attachment adds versatility to the machine.



ZERO-TAIL-SWING design allows the superstructure to rotate entirely within the tracks without overhang, allowing operation close to walls and other obstacles.



ECO MODE is activated with the flip of a switch, reducing engine speed by 10% without sacrificing power. This saves fuel when full speed is not necessary.



SERVICEABILITY and daily maintenance checks are made easy with the large removable side panels, flip-open rear engine door and under-seat access panel.

POWERFUL AND INTELLIGENT



ON-DEMAND HYDRAULICS provide no loss of hydraulic performance during simultaneous movements, allowing smooth operation even while using the boom and arm during turning.



OVERSIZED CAB enclosure provides a spacious, ergonomic operating environment. The cab is mounted on five silicon, oil-filled isolators which reduce cab noise and vibration to the operator.



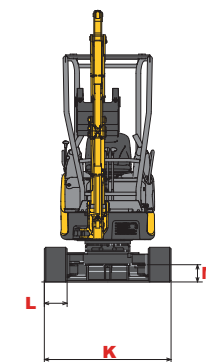
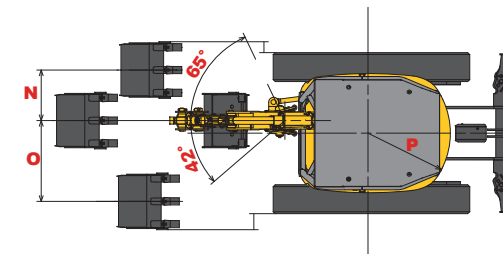
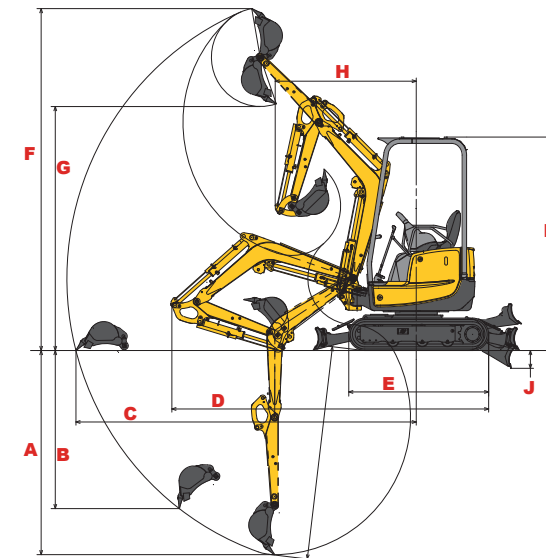
AUTO DECELERATION improves fuel economy, decreases noise and lowers emissions levels by reducing engine speed to idle after four seconds without hydraulic movement.

GEHL

SPECIFICATIONS		Z17	Z27	Z35 GEN:2	Z45 GEN:2	Z80
ENGINE	Make	Yanmar	Yanmar	Yanmar	Yanmar	Yanmar
	Model	3TNV70-XBV Interim Tier IV	3TNV82A-SBV Interim Tier IV	3TNV88F-ESBV Tier IV	4TNV88C-PBV Tier IV	4TNV98-ZWBV1 Interim Tier IV
	Type	Diesel	Diesel	Diesel	Diesel	Diesel
	Displacement (L)	52.1 cu.in. (0.854)	81.13 cu.in. (1.33)	100.2 cu.in. (1.64)	133.6 cu.in. (2.19)	202.5 cu.in. (3.32)
	Net Power (kW) @ rpm	13.5 hp (10.1) @ 2200	21.6 hp (16.1) @ 2200	23.9 hp (17.8) @ 2200	37.7 hp (28.1) @ 2400	54.6 hp (40.7) @ 2000
	Fuel Tank (L)	5.3 gal. (20)	11.1 gal. (42)	10.8 gal. (41)	17.4 gal. (66)	30.4 gal. (115)
	Fuel Consumption (L/hr)	0.53 gal./hr. (2)	0.95 gal./hr (3.6)	1.03 gal./hr (3.9)	1.24 gal./hr (4.7)	1.9 gal./hr (7.2)
HYDRAULIC SYSTEM	Pumps	2 variable, 2 gear	2 variable, 2 gear	2 variable, 2 gear	2 variable, 2 gear	2 variable, 2 gear
	Total Flow Rate (L/min)	15.4 gpm (58.3)	25.56 gpm (96.8)	29.3 gpm (110.8)	35.1 gpm (132.8)	56.7 gpm (214.5)
	Working Pressure (bar)	2987 psi (206)	2990 psi (206)	3060 psi (211)	3133 psi (216)	3699 psi (255)
	Swing System Pressure (bar)	2132 psi (147)	2844 psi (196)	2844 psi (196)	3133 psi (216)	3481 psi (240)
	Oil Cooler	standard	standard	standard	Standard	standard
	Hydraulic Tank (L)	4.4 gal. (16.7)	9.5 gal. (36)	10.6 gal. (40)	10.0 gal. (38)	15.9 gal. (60)
	Travel Speed - dual (km/hr)	1.3/2.7 mph (2.1/4.3)	1.7/2.9 mph (2.8/4.7)	1.7/2.8 mph (2.7/4.5)	1.5/2.9 mph (2.4/4.6)	1.6/2.8 mph (2.5/4.5)
UNDERCARRIAGE AND SLEWING SYSTEM	Gradability	20°	20°	20°	20°	20°
	Track Type / Width (mm)	Rubber / 9.1" (230)	Rubber / 10.2" (260)	Rubber / 11.8" (300)	Rubber / 13.8" (350)	Rubber / 17.7" (450)
	No. of Rollers per Side (track/idle)	3/1	4/1	4/1	4/1	5/1
	Undercarriage Length (mm)	5'0" (1525)	6'7" (2010)	7'1" (2160)	8' 6" (2590)	9'6" (2890)
	Track Length on Ground (mm)	4'3.4" (1305)	5'8.1" (1730)	5'10" (1778)	7' 4.4" (2246)	8'2.4" (2500)
	Ground Clearance (mm)	6.9" (175)	12.6" (320)	12.6" (320)	13.6" (345)	15.4" (390)
	Ground Pressure - Cab/Canopy (kPa)	N/A / 4.1 psi (28.6)	5.2/5.0 psi (36.0/34.6)	5.0/4.8 psi (34.3/33.1)	4.4/4.3 psi (30.6/29.4)	5.2 psi (35.8) / N/A
	Slew Speed	9.5 rpm	10 rpm	9.5 rpm	10 rpm	9 rpm
	Maximum Drawbar Pull (kg)	4181 lbs. (1897)	5508 lbs. (2498)	7306 lbs. (3314)	10,611 lbs. (4813)	14,500 lbs. (6577)
	Maximum Bucket Breakout (kg)	3417 lbs. (1550)	5732 lbs. (2600)	5643 lbs. (2560)	6497 lbs. (2947)	11,332 lbs. (5140)
DIMENSIONS	Maximum Arm Digging Force (kg)	1918 lbs. (870)	3527 lbs. (1600)	4226 lbs. (1917)	4676 lbs. (2121)	8356 lbs. (3790)
	Operating Weight with Canopy (kg)	3836 lbs. (1740)	6946 lbs. (3150)	7905 lbs. (3585)	10,417 lbs. (4725)	N/A
	Operating Weight with Cab (kg)	N/A	7231 lbs. (3280)	8214 lbs. (3725)	10,814 lbs. (4905)	18,136 lbs. (8225)
	A. Max. Digging Depth (mm)	7'2.6" (2200)	9'0.3" (2750)	10'8" (3250)	11' 7.8" (3550)	14.4.4" (4380)
	B. Max. Vertical Wall Digging Depth (mm)	6'0.8" (1850)	7'8.5" (2350)	7'11" (2410)	7' 9.7" (2380)	12'10.3" (3920)
	C. Max. Reach at Ground Level (mm)	12'2.1" (3710)	15'0.7" (4590)	17'3.5" (5270)	18' 10" (5740)	23'5.1" (7140)
	D. Transport Length (mm)	11'3.8" (3450)	13'7" (4140)	15'8" (4770)	17' 5.4" (5320)	21'2.3" (6460)
	E. Undercarriage Length (mm)	5'0" (1525)	6'7.1" (2010)	7'1" (2160)	8' 6" (2590)	9'5.8" (2890)
	F. Max. Digging Height (mm)	12'1.3" (3690)	15'1.9" (4620)	16'9.2" (5110)	18' 8.4" (5700)	23'9.4" (7250)
	G. Max. Dump Height (mm)	8'7.5" (2630)	9'6.6" (2910)	11'2.3" (3410)	12' 0.9" (3680)	15'2.7" (4640)
	H. Minimum Front Swing Radius (mm)	5'0.4" (1535)	6'11.5" (2120)	7'1.4" (2170)	7' 9.7" (2380)	8'11.1" (2720)
	I. Transport Height (mm)	7'6.6" (2300)	8'2.8" (2510)	8'1" (2470)	8' 4" (2540)	8'9.9" (2690)
	J. Blade Below Ground (mm)	8.1" (205)	1'0.6" (320)	1'2.6" (370)	1' 9.3" (540)	1'6.9" (480)
	K. Overall Base Width (mm)	3'1.4"/4'2.4" (950/1280)	5'1" (1550)	5'8.5" (1740)	6' 4.4" (1940)	7'5.4" (2270)
	L. Track Width (mm)	9.1" (230)	10.2" (260)	11.8" (300)	1' 1.8" (350)	1'5.7" (450)
	M. Ground Clearance (mm)	6.9" (175)	10.6" (320)	12.6" (320)	1' 1.6" (345)	1'3.4" (390)
	N. Parallel Offset Right (mm)	1'3.7" (400)	1'7.3" (490)	2'1.2" (640)	2' 6.3" (770)	2'0.4" (620)
	O. Parallel Offset Left (mm)	2'1.2" (640)	2'8.9" (835)	1'11.2" (590)	2' 2.8" (680)	2'9.1" (840)
	P. Rear End Swing Radius (mm)	2'1.2" (640)	2'6.5" (775)	2'6.5" (775)	3' 2.2" (970)	3'8.7" (1135)
Q. Boom Swing Angle - Left	42°	45°	43°	68°	57°	
R. Boom Swing Angle - Right	65°	75°	65°	68°	60°	
DOZER BLADE	Max. Dig Depth with 8ft. (2.5 m) Flat Bottom	5'0" (1520)	7'3" (2200)	9'1" (2770)	10' 3" (3135)	13'5" (4100)
	Width - extended / retracted (mm)	3'1" (950) to 4'2" (1280)	5'1" (1550)	5'8.5" (1740)	6' 5.6" (1970)	7'5" (2260)
	Height (mm)	9.3" (235)	13.6" (345)	14.6" (370)	15.7" (400)	17.7" (450)

REFERENCE DIAGRAMS

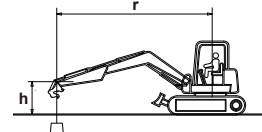
Z17 Shown



† Lifting Capacity Charts Notes

- Lifting capacity is hydraulically limited (denoted with *).
- Lifting capacity calculated with standard Power-A-Tach® quick coupler on models Z27, Z35 GEN:2, Z45 GEN:2 and Z80.
- Note where applicable specifications conform to ISO standards.
- Weight of all lifting devices and attachment must be deducted to determine load that can be lifted.
- Lift point is bucket hinge point.

LIFTING CAPACITIES†



(h) LIFT POINT HEIGHT - in. (mm)	RATED LIFT CAPACITY OVER END BLADE DOWN - lbs. (kg)				RATED LIFT CAPACITY OVER END BLADE UP - lbs. (kg)				RATED LIFT CAPACITY OVER SIDE BLADE UP - lbs. (kg)			
	(r) LIFT RADIUS - in. (mm)				(r) LIFT RADIUS - in. (mm)				(r) LIFT RADIUS - in. (mm)			
	MAX	98.5 (2500)	78.7 (2000)	MIN	MAX	98.5 (2500)	78.7 (2000)	MIN	MAX	98.5 (2500)	78.7 (2000)	MIN
78.7 (2000)	*749 (340)	*705 (320)			496 (225)	*694 (315)			518 (235)	*694 (315)		
59.1 (1500)	*771 (350)	*815 (370)	*936 (425)		451 (205)	*672 (305)	*925 (420)		473 (215)	*815 (370)	*936 (425)	
39.4 (1000)	*804 (365)	*992 (450)	*1311 (595)	1466 (665)	407 (185)	628 (285)	903 (410)	1157 (525)	440 (200)	650 (295)	959 (435)	1212 (550)
19.7 (500)	*826 (375)	*1157 (525)	*1631 (740)	*2028 (920)	407 (185)	617 (280)	859 (390)	1036 (470)	440 (200)	650 (295)	914 (415)	1102 (500)
GROUND (0)	*859 (390)	*1212 (550)	*1686 (765)	*2314 (1050)	418 (190)	584 (265)	804 (365)	1146 (520)	451 (205)	628 (285)	848 (385)	1091 (495)
-19.7 (-500)	*903 (410)	*1201 (545)	*1620 (735)		462 (210)	573 (260)	782 (355)		496 (225)	617 (280)	848 (385)	
-39.4 (-100)	*925 (420)		*1499 (680)		551 (250)		826 (375)		584 (265)		892 (405)	

(h) LIFT POINT HEIGHT - in. (mm)	RATED LIFT CAPACITY OVER END BLADE DOWN - lbs. (kg)				RATED LIFT CAPACITY OVER END BLADE UP - lbs. (kg)				RATED LIFT CAPACITY OVER SIDE BLADE UP - lbs. (kg)			
	(r) LIFT RADIUS - in. (mm)				(r) LIFT RADIUS - in. (mm)				(r) LIFT RADIUS - in. (mm)			
	MAX	118.1 (3000)	98.5 (2500)	78.8 (2000)	MAX	118.1 (3000)	98.5 (2500)	78.8 (2000)	MAX	118.1 (3000)	98.5 (2500)	78.8 (2000)
118.1 (3000)	*1472 (668)				1020 (463)				979 (444)			
98.5 (2500)	*1472 (668)	*1453 (659)			855 (388)	1170 (531)			813 (369)	1087 (493)		
78.7 (2000)	*1472 (668)	*1587 (720)	*1722 (781)		740 (336)	1144 (519)	*1693 (768)		723 (328)	1087 (493)	*1673 (759)	
39.4 (1000)	*1510 (685)	*2028 (920)	*2595 (1177)		681 (309)	1062 (482)	1408 (639)		657 (298)	1005 (456)	1369 (621)	
GROUND (0)	*1558 (707)	*2200 (998)	*2853 (1294)	*3909 (1773)	1038 (471)	1005 (456)	1360 (617)	1938 (879)	690 (313)	972 (441)	1219 (553)	1799 (816)
-39.4 (-1000)	*1547 (702)		*2412 (1094)	*3170 (1438)	930 (422)		1369 (621)	1931 (876)	897 (407)		1276 (579)	1772 (804)
-59.1 (-1500)	*1356 (615)				*1375 (624)				*1367 (620)			

(h) LIFT POINT HEIGHT - in. (mm)	RATED LIFT CAPACITY OVER END BLADE DOWN - lbs. (kg)				RATED LIFT CAPACITY OVER END BLADE UP - lbs. (kg)				RATED LIFT CAPACITY OVER SIDE BLADE UP - lbs. (kg)			
	(r) LIFT RADIUS - in. (mm)				(r) LIFT RADIUS - in. (mm)				(r) LIFT RADIUS - in. (mm)			
	MAX	137.8 (3500)	118.1 (3000)	98.5 (2500)	MAX	137.8 (3500)	118.1 (3000)	98.5 (2500)	MAX	137.8 (3500)	118.1 (3000)	98.5 (2500)
118.1 (3000)	*1719 (780)	*1631 (740)	*1609 (730)		1058 (480)	1322 (600)			992 (450)	1278 (580)		
78.7 (2000)	*1763 (800)	*1918 (870)	*2138 (970)	*2491 (1130)	903 (410)	1278 (580)	1653 (750)	*2447 (1110)	815 (370)	1256 (570)	1543 (700)	*2447 (1110)
39.4 (1000)	*1807 (820)	*2336 (1060)	*2888 (1310)	*3813 (1730)	793 (360)	1190 (540)	1521 (690)	1984 (900)	749 (340)	1124 (510)	1410 (640)	1807 (820)
GROUND (0)	*1873 (850)	*2601 (1180)	*3218 (1460)	*4012 (1820)	815 (370)	1124 (510)	1410 (640)	1873 (850)	793 (360)	1058 (480)	1322 (600)	1719 (780)
-39.4 (-1000)	*1940 (880)	*2403 (1090)	*2954 (1340)	*3703 (1680)	925 (420)	1080 (490)	1388 (630)	1851 (840)	881 (400)	1014 (460)	1322 (600)	1675 (760)
-59.1 (-1500)	*1918 (870)	*2050 (930)	*2579 (1170)	*3130 (1420)	1124 (510)	1080 (490)	1410 (640)	1851 (840)	1058 (480)	1058 (480)	1344 (610)	1675 (760)
-78.7 (-2000)	*1851 (840)				1477 (670)				1410 (640)			

(h) LIFT POINT HEIGHT - in. (mm)	RATED LIFT CAPACITY OVER END BLADE DOWN - lbs. (kg)				RATED LIFT CAPACITY OVER END BLADE UP - lbs. (kg)				RATED LIFT CAPACITY OVER SIDE BLADE UP - lbs. (kg)			
	(r) LIFT RADIUS - in. (mm)				(r) LIFT RADIUS - in. (mm)				(r) LIFT RADIUS - in. (mm)			
	MAX	157.5 (4000)	118.1 (3000)	78.7 (2000)	MAX	157.5 (4000)	118.1 (3000)	78.7 (2000)	MAX	157.5 (4000)	118.1 (3000)	78.7 (2000)
157.5 (4000)	*2403 (1090)				*2292 (1040)				*1763 (800)			
118.1 (3000)	*2358 (1070)	*2314 (1050)			1543 (700)	*1829 (830)			1322 (600)	1587 (720)		
78.7 (2000)	*2425 (1070)	*2645 (1200)	*3306 (1500)		1300 (590)	1719 (780)	*3152 (1430)		1146 (520)	1587 (720)	*2425 (1100)	
39.4 (1000)	*2535 (1150)	*3042 (1380)	*4365 (1980)		1256 (570)	1675 (760)	2535 (1150)		1124 (510)	1499 (680)	2204 (1000)	
GROUND (0)	*2579 (1170)	*3284 (1490)	*4585 (2080)	*6459 (2930)	1300 (590)	1587 (720)	2358 (1070)	4166 (1890)	1102 (500)	1366 (620)	2028 (920)	3351 (1520)
-39.4 (-1000)	*2667 (1210)	*2910 (1320)	*4232 (1920)	*6393 (2900)	1521 (690)	1587 (720)	2403 (1090)	4387 (1990)	1322 (600)	1344 (610)	1984 (900)	3571 (1620)
-78.7 (-2000)	*2535 (1150)		*2954 (1340)		2601 (1180)		2469 (1120)		1940 (880)		2116 (960)	

(h) LIFT POINT HEIGHT - in. (mm)	RATED LIFT CAPACITY OVER END BLADE DOWN - lbs. (kg)				RATED LIFT CAPACITY OVER END BLADE UP - lbs. (kg)				RATED LIFT CAPACITY OVER SIDE BLADE UP - lbs. (kg)			
	(r) LIFT RADIUS - in. (mm)				(r) LIFT RADIUS - in. (mm)				(r) LIFT RADIUS - in. (mm)			
	MAX	196.9 (5000)	157.1 (4000)	118.1 (3000)	MAX	196.9 (5000)	157.1 (4000)	118.1 (3000)	MAX	196.9 (5000)	157.1 (4000)	118.1 (3000)
196.9 (5000)	*3638 (1650)		*3572 (1620)		*3550 (1610)		*3461 (1570)		2734 (1240)		*3550 (1610)	
157.5 (4000)	*3417 (1550)	*3417 (1550)	*3572 (1620)		2403 (1090)	2734 (1240)	*3417 (1550)		2271 (1030)	2491 (1130)	*3528 (1600)	
118.1 (3000)	*3483 (1580)	*3616 (1640)	*4233 (1920)	*5468 (2480)	2028 (920)	2668 (1210)	*4123 (1870)	*5336 (2420)	1896 (860)	24		

FEATURES	Z17	Z27	Z35 GEN:2	Z45 GEN:2	Z80
ENGINE					
Electric Glow Plug Starting Aid	○		○	○	
Electric Grid Heater Starting Aid		○			○
Yanmar, Naturally-Aspirated Diesel Engine	○	○	○	○	○
Eco Mode			○		○
HYDRAULIC SYSTEM					
Power-A-Tach® Hydraulic Quick-Attach System		○	○	○	○
Factory Installed Hydraulic Thumb Attachment		●	●	●	●
Hydraulic Pumps	4	4	4	4	4
ISO / SAE Pattern Control Valve	○	○	○	○	○
Proportional Auxiliary Hydraulic Joystick Control			○	○	○
Two-way Auxiliary Hydraulics with Quick Couplers and Direct-to-Tank Bypass Valve	○	○	○	○	○
UNDERCARRIAGE					
Automatic 2-Speed Transmission					○
Hydraulically Extendable Undercarriage	○				
Rubber Tracks	○	○	○	○	○
Selectable 2-Speed Transmission	○	○	○	○	
Track Rollers	3	4	4	4	5
UPPERSTRUCTURE					
Auto Idle			○	○	○
360° Continuous Movement	○	○	○	○	○
Zero-Tail-Swing	○	○	○	○	○
OPERATOR STATION					
Enclosed Cab (ROPS / FOPS)		●	●	●	○ ¹
Canopy (ROPS / FOPS)	○	○	○	○	
3" Safety Belt		●	●	●	●
Adjustable Armrests - height and angle	○	○	○	○	○
Forearm Supports	○	○	○	○	○
Adjustable Suspension Seat		○	○	○	○
Air Conditioning			●	●	○
Radio-Ready with Speakers and Antennae			○	○	○
Horn	○	○	○	○	○
LIGHTS					
Boom Work Lights	○	○	○	○	○

¹ Z80 is not FOPS compliant.

○ OPTIONAL ● STANDARD

EMISSIONS CLASSIFICATION



Machines with this decal comply with Tier IV standards

GET ATTACHED

With a wide variety of EDGE® attachments available from your authorized dealer, Gehl Compact Excavators are easily transformed to meet the needs of your business.



EDGE®



Gehl reminds users to read and understand the operator's manual before operating any equipment. Also, make sure all safety devices and shields are in place and functioning properly.

Gehl reserves the right to add improvements or make changes in specifications at any time without notice or obligation.

OWNER DRIVEN

Gehl authorized dealers offer a full line of compact equipment, backed up by an exceptional sales, service and parts experience.

For more information on Gehl Compact Excavators and the rest of the Gehl equipment line, call our hotline at

1-800-628-0491

or visit gehl.com



GEHL COMPACT EQUIPMENT



This product is created with materials from well-managed forests, controlled sources, and contains a minimum of 10% post consumer waste.

GEHL

West Bend, WI 53095 U.S.A.

Tel: 262-334-9461 | Fax: 262-338-7517