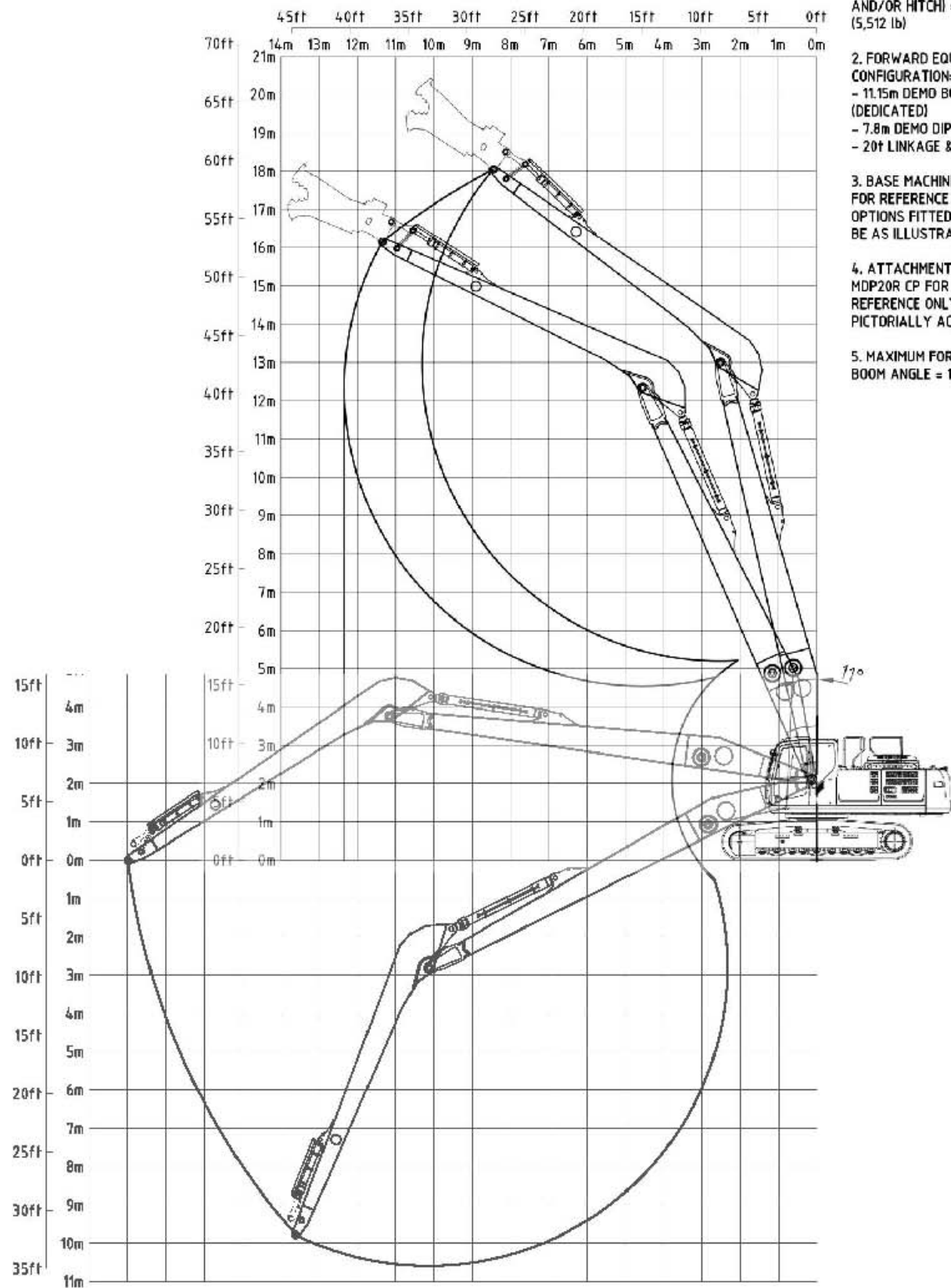


D

C

B

A



NOTES:

1. MAXIMUM ATTACHMENT SIZE (INCLUDING HEAD AND/OR HITCH) = 2500 kg (5,512 lb)
2. FORWARD EQUIPMENT CONFIGURATION--
 - 11.15m DEMO BOOM (DEDICATED)
 - 7.8m DEMO DIPPER
 - 20T LINKAGE & CYLINDER
3. BASE MACHINE SHOWN FOR REFERENCE ONLY. OPTIONS FITTED MAY NOT BE AS ILLUSTRATED.
4. ATTACHMENT SHOWN IS MDP20R CP FOR REFERENCE ONLY. NOT PICTORIALY ACCURATE.
5. MAXIMUM FORWARD BOOM ANGLE = 11°

REVISIONS

ZONE	REV.	DESCRIPTION	DATE	APPROVED

PROPRIETARY AND CONFIDENTIAL
 THE INFORMATION CONTAINED IN THIS DRAWING IS THE SOLE PROPERTY OF COMPANY WRENCH LTD. ANY REPRODUCTION IN PART OR AS A WHOLE WITHOUT THE WRITTEN PERMISSION OF COMPANY WRENCH LTD IS PROHIBITED.

MATERIAL:		
	NAME	DATE
DRAWN	ET	10/30/2015
APPROVED		
MFG. APPR.		



4805 SCOOPY LANE NW
 CARROLL, OHIO 43112
 740-654-5304

The Cutting Edge of Customer Service

UNLESS OTHERWISE SPECIFIED DIMENSION TOLERANCES ARE AS FOLLOWS:

DECIMAL: ±0.015"
 FRACTIONAL: ±1/16"
 ANGULAR: ±1°

WEIGHT:

TITLE:
SK350LC-9 - 60' HIGH REACH RANGE

SCALE: NTS	SIZE B	DWG./PART NO.
SHEET 1 OF 1		

D

C

B

A

WARNING : DO NOT OPERATE MACHINE OVER SIDE. OPERATE OVER FRONT ONLY WITH DRIVES TO THE REAR OF THE MACHINE.

LIFT CAPACITIES CALCULATED AT ATTACHMENT PIVOT POINT ON STICK (lbs)
NO ATTACHMENT ON STICK. ATTACHMENT WEIGHT MUST BE SUBTRACTED.

REACH							MAX	HEIGHT
MAX	35ft	30ft	25ft	20ft	15ft	10ft		
		7871*					MAX	
7255*							55ft	
8288*	10178*						50ft	
9786*	10604*						45ft	
9653*	10578*						40ft	
9806*	10712*						35ft	
10292*	10987*						30ft	
11301*		12861*					25ft	
13483*			15973*				20ft	
25096*							15ft	
8486*							10ft	
5273*							5ft	
4885*							0ft	

THE FOLLOWING NOTES PERTAIN TO THIS MACHINE EQUIPPED WITH 7,920# ADDITIONAL COUNTERWEIGHT.

- DO NOT ATTEMPT TO LIFT OR HOLD ANY LOAD THAT EXCEEDS THESE RATED VALUES.
- WHEN WORKING, THE BOOM MUST BE IN THE FULLY UPRIGHT POSITION. MAXIMUM FORWARD TILT OF THE BOOM IS 11°.
- MACHINE MUST NEVER BE OPERATED OVER THE SIDE.
- THE OPERATOR SHOULD BE FULLY ACQUAINTED WITH MACHINE OPERATION BEFORE OPERATING THE MACHINE.
- LIFTING CAPACITIES ASSUME MACHINE STANDING ON LEVEL, FIRM AND UNIFORM SUPPORTING SURFACE. OPERATOR MUST MAKE ALLOWANCE FOR JOB CONDITIONS SUCH AS SOFT UNEVEN GROUND, OUT OF LEVEL CONDITIONS, SIDE LOADS, SUDDEN STOPPING OF LOADS, HAZARDOUS CONDITIONS, INEXPERIENCED PERSONNEL, AND ECT.
- THE ABOVE THEORETICAL RATINGS ARE BASED ON CALCULATIONS DERIVED FROM STANDARD O.E.M LIFT CHARTS BASED ON SAE STANDARD No J1097. THEY DO NOT EXCEED 87% HYDRAULIC LIFTING CAPACITY OR 75% OF TIPPING CAPACITY. RATED LOADS MARKED WITH A (*) ARE LIMITED HYDRAULICALLY.
- WHEN TRAVELING THE MACHINE IN EITHER FORWARD OR REVERSE DIRECTIONS TO THE JOB SITE (MORE THEN 20ft), WITH THE BOOM STRAIGHT OVER THE FRONT OR REAR OF THE MACHINE, THE BOOM SHOULD BE POSITIONED SUCH THAT THE TIP OF THE TOOL IS APPROX 5ft ABOVE THE GROUND, WITH OUTER ARM AND TOOL PERPENDICULAR TO THE GROUND. TRAVEL CONTROL SHOULD BE SET TO LOW SPEED AND ENGINE RPM AT MID RANGE, AT THE JOB SITE, WITH THE BOOM IN WORKING POSITION (DRIVE SPROCKETS TO THE REAR, BOOM OVER THE FRONT) THE MACHINE MAY BE MOVED UP TO 20ft FORWARD OR REVERSE, TRAVEL AT LOW SPEED SETTING, ENGINE RPM IN MID RANGE, IN ORDER TO MOVE INTO THE WORKING POSITION, PROVIDED THE GROUND IS FIRM AND LEVEL.
- WHEN SWINGING THE MACHINE 360°, THE BOOM SHOULD BE IN THE FULLY UPRIGHT POSITION, WITH THE OUTER ARM AND TOOL PERPENDICULAR TO THE GROUND.
- WHEN SHUTTING DOWN THE MACHINE FOR A PERIOD OF TIME, THE BOOM SHOULD BE LOWERED TO REST THE OUTER ARM ON THE GROUND, WITH THE OUTER ARM AND TOOL POSITIONED PARALLEL TO THE GROUND.
- DO NOT BOOM DOWN WITH TOOL ON THE GROUND AND FRONT FULLY RETRACTED, DOING SO MAY CAUSE DAMAGE TO THE MACHINE.

WARNING : DO NOT OPERATE MACHINE OVER SIDE. OPERATE OVER FRONT ONLY WITH DRIVES TO THE REAR OF THE MACHINE.

LIFT CAPACITIES CALCULATED AT ATTACHMENT PIVOT POINT ON STICK (lbs)
NO ATTACHMENT ON STICK. ATTACHMENT WEIGHT MUST BE SUBTRACTED.

REACH							HEIGHT
MAX	50ft	40ft	30ft	20ft	10ft		
6521*	8589*	11318*	15748*	24577*		0ft	
6022*	7937*	10807*	15007*	21992*	18119*	-10ft	
5205*	6217*	9174*	12636*	17166*	3622*	-20ft	
5783*	5783*	8335*	10159*			-30ft	

THE FOLLOWING NOTES PERTAIN TO THIS MACHINE EQUIPPED WITH 7,920# ADDITIONAL COUNTERWEIGHT.

- DO NOT ATTEMPT TO LIFT OR HOLD ANY LOAD THAT EXCEEDS THESE RATED VALUES.
- WHEN WORKING, THE BOOM MUST BE IN THE FULLY UPRIGHT POSITION. MAXIMUM FORWARD TILT OF THE BOOM IS 11°.
- MACHINE MUST NEVER BE OPERATED OVER THE SIDE.
- THE OPERATOR SHOULD BE FULLY ACQUAINTED WITH MACHINE OPERATION BEFORE OPERATING THE MACHINE.
- LIFTING CAPACITIES ASSUME MACHINE STANDING ON LEVEL, FIRM AND UNIFORM SUPPORTING SURFACE. OPERATOR MUST MAKE ALLOWANCE FOR JOB CONDITIONS SUCH AS SOFT UNEVEN GROUND, OUT OF LEVEL CONDITIONS, SIDE LOADS, SUDDEN STOPPING OF LOADS, HAZARDOUS CONDITIONS, INEXPERIENCED PERSONNEL, AND ECT.
- THE ABOVE THEORETICAL RATINGS ARE BASED ON CALCULATIONS DERIVED FROM STANDARD O.E.M LIFT CHARTS BASED ON SAE STANDARD No J1097. THEY DO NOT EXCEED 87% HYDRAULIC LIFTING CAPACITY OR 75% OF TIPPING CAPACITY. RATED LOADS MARKED WITH A (*) ARE LIMITED HYDRAULICALLY.
- WHEN TRAVELING THE MACHINE IN EITHER FORWARD OR REVERSE DIRECTIONS TO THE JOB SITE (MORE THEN 20ft), WITH THE BOOM STRAIGHT OVER THE FRONT OR REAR OF THE MACHINE, THE BOOM SHOULD BE POSITIONED SUCH THAT THE TIP OF THE TOOL IS APPROX 5ft ABOVE THE GROUND, WITH OUTER ARM AND TOOL PERPENDICULAR TO THE GROUND. TRAVEL CONTROL SHOULD BE SET TO LOW SPEED AND ENGINE RPM AT MID RANGE, AT THE JOB SITE, WITH THE BOOM IN WORKING POSITION (DRIVE SPROCKETS TO THE REAR, BOOM OVER THE FRONT) THE MACHINE MAY BE MOVED UP TO 20ft FORWARD OR REVERSE, TRAVEL AT LOW SPEED SETTING, ENGINE RPM IN MID RANGE, IN ORDER TO MOVE INTO THE WORKING POSITION, PROVIDED THE GROUND IS FIRM AND LEVEL.
- WHEN SWINGING THE MACHINE 360°, THE BOOM SHOULD BE IN THE FULLY UPRIGHT POSITION, WITH THE OUTER ARM AND TOOL PERPENDICULAR TO THE GROUND.
- WHEN SHUTTING DOWN THE MACHINE FOR A PERIOD OF TIME, THE BOOM SHOULD BE LOWERED TO REST THE OUTER ARM ON THE GROUND, WITH THE OUTER ARM AND TOOL POSITIONED PARALLEL TO THE GROUND.
- DO NOT BOOM DOWN WITH TOOL ON THE GROUND AND FRONT FULLY RETRACTED, DOING SO MAY CAUSE DAMAGE TO THE MACHINE.