

REVISIONS				
ZONE	REV.	DESCRIPTION	DATE	APPROVED

NOTES

1. PERMITTED RANGE WITH 2500kg (5510 lb) TOOL (INCLUSIVE OF HEAD &/OR QUICK HITCH) - 10° MAXIMUM FORWARD BOOM ANGLE.
2. BASE MACHINE & ATTACHMENT SHOWN FOR REFERENCE ONLY. OPTIONS FITTED MAY NOT BE AS ILLUSTRATED.

PROPRIETARY AND CONFIDENTIAL
 THE INFORMATION CONTAINED IN THIS DRAWING IS THE SOLE PROPERTY OF COMPANY WRENCH LTD. ANY REPRODUCTION IN PART OR AS A WHOLE WITHOUT THE WRITTEN PERMISSION OF COMPANY WRENCH LTD IS PROHIBITED.

MATERIAL:		
	NAME	DATE
DRAWN	ET	8/11/2014
APPROVED		
MFG. APPR.		



4805 SCOOPY LANE NW
 CARROLL, OHIO 43112
 740-654-5304

The Cutting Edge of Customer Service

UNLESS OTHERWISE SPECIFIED DIMENSION TOLERANCES ARE AS FOLLOWS:
 DECIMAL: ±0.015"
 FRACTIONAL: ±1/16"
 ANGULAR: ±1°

WEIGHT:

TITLE: **SK500LC-9 - 86' HIGH REACH RANGE**

SCALE: NTS	SIZE	DWG./PART NO.
SHEET 1 OF 1	B	

WARNING : DO NOT OPERATE MACHINE OVER SIDE. OPERATE OVER FRONT ONLY WITH DRIVES TO THE REAR OF THE MACHINE.

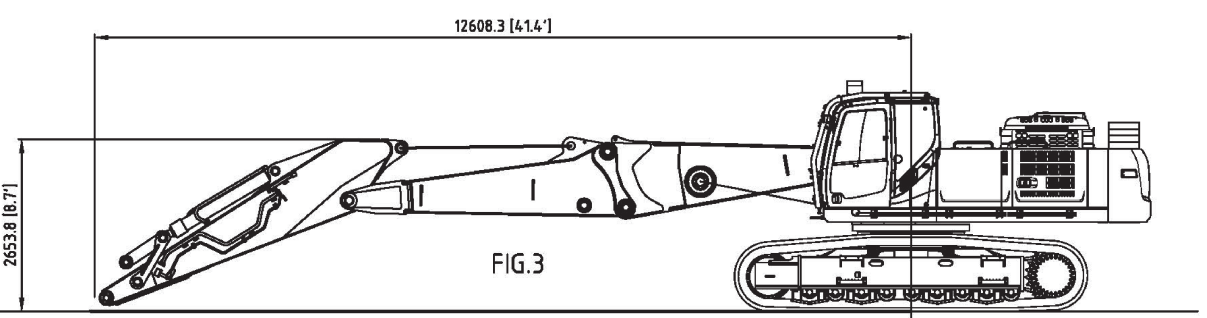
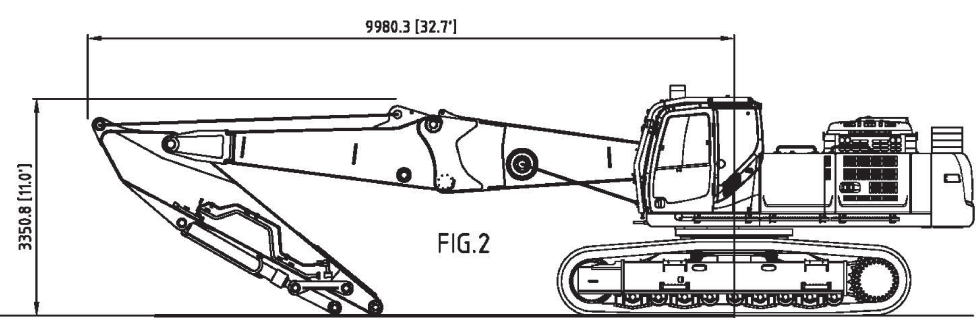
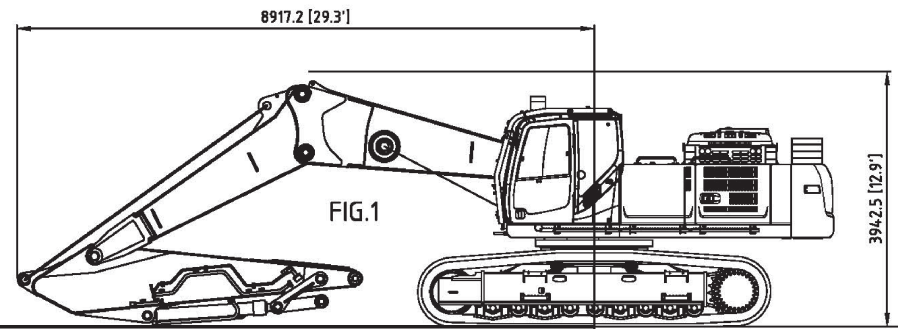
LIFT CAPACITIES CALCULATED AT ATTACHMENT PIVOT POINT ON STICK (lbs)
NO ATTACHMENT ON STICK. ATTACHMENT WEIGHT MUST BE SUBTRACTED.

REACH									HEIGHT
55ft	50ft	45ft	40ft	35ft	30ft	25ft	20ft	15ft	
									85ft
				12895*					80ft
			10435*						75ft
		9267*	9017*						70ft
	8626*	8425*	8332*						65ft
	8228*	8026*	11993*						60ft
7953*	7899*	8777*	11935*						55ft
7898*	7929*	7967*	11821*						50ft
8043*	8149*	8243*	11684*						45ft
	8572*	8747*	11576*						40ft
	9213*	9541*	10424*	13598*					35ft
		10495*	11226*	13626*	16276*				30ft
			12137*	14006*	16490*	20147*	25912*		25ft
					17086*	21072*	26953*	23859*	20ft
							18859*		15ft
							10682*		10ft
							8792*		5ft
							8381*		0ft

THE FOLLOWING NOTES PERTAIN TO THIS MACHINE EQUIPPED WITH 8,400# ADDITIONAL COUNTERWEIGHT.

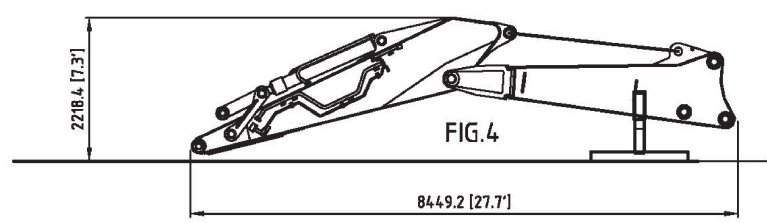
- DO NOT ATTEMPT TO LIFT OR HOLD ANY LOAD THAT EXCEEDS THESE RATED VALUES.
- WHEN WORKING, THE BOOM MUST BE IN THE FULLY UPRIGHT POSITION. MAXIMUM FORWARD TILT OF THE BOOM IS 10°.
- MACHINE MUST NEVER BE OPERATED OVER THE SIDE.
- THE OPERATOR SHOULD BE FULLY ACQUAINTED WITH MACHINE OPERATION BEFORE OPERATING THE MACHINE.
- LIFTING CAPACITIES ASSUME MACHINE STANDING ON LEVEL, FIRM AND UNIFORM SUPPORTING SURFACE. OPERATOR MUST MAKE ALLOWANCE FOR JOB CONDITIONS SUCH AS SOFT UNEVEN GROUND, OUT OF LEVEL CONDITIONS, SIDE LOADS, SUDDEN STOPPING OF LOADS, HAZARDOUS CONDITIONS, INEXPERIENCED PERSONNEL, AND ECT.
- THE ABOVE THEORETICAL RATINGS ARE BASED ON CALCULATIONS DERIVED FROM STANDARD O.E.M LIFT CHARTS BASED ON SAE STANDARD No J1097. THEY DO NOT EXCEED 87% HYDRAULIC LIFTING CAPACITY OR 75% OF TIPPING CAPACITY. RATED LOADS MARKED WITH A (*) ARE LIMITED HYDRAULICALLY.
- WHEN TRAVELING THE MACHINE IN EITHER FORWARD OR REVERSE DIRECTIONS TO THE JOB SITE (MORE THEN 20ft), WITH THE BOOM STRAIGHT OVER THE FRONT OR REAR OF THE MACHINE, THE BOOM SHOULD BE POSITIONED SUCH THAT THE TIP OF THE TOOL IS APPROX 5ft ABOVE THE GROUND, WITH OUTER ARM AND TOOL PERPENDICULAR TO THE GROUND. TRAVEL CONTROL SHOULD BE SET TO LOW SPEED AND ENGINE RPM AT MID RANGE, AT THE JOB SITE, WITH THE BOOM IN WORKING POSITION (DRIVE SPROCKETS TO THE REAR, BOOM OVER THE FRONT) THE MACHINE MAY BE MOVED UP TO 20ft FORWARD OR REVERSE, TRAVEL AT LOW SPEED SETTING, ENGINE RPM IN MID RANGE, IN ORDER TO MOVE INTO THE WORKING POSITION, PROVIDED THE GROUND IS FIRM AND LEVEL.
- WHEN SWINGING THE MACHINE 360°, THE BOOM SHOULD BE IN THE FULLY UPRIGHT POSITION, WITH THE OUTER ARM AND TOOL PERPENDICULAR TO THE GROUND.
- WHEN SHUTTING DOWN THE MACHINE FOR A PERIOD OF TIME, THE BOOM SHOULD BE LOWERED TO REST THE OUTER ARM ON THE GROUND, WITH THE OUTER ARM AND TOOL POSITIONED PARALLEL TO THE GROUND.
- DO NOT BOOM DOWN WITH TOOL ON THE GROUND AND FRONT FULLY RETRACTED, DOING SO MAY CAUSE DAMAGE TO THE MACHINE.

REVISIONS				
ZONE	REV.	DESCRIPTION	DATE	APPROVED

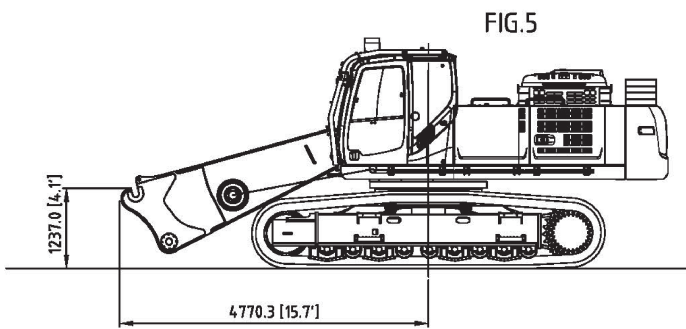


BASE MACHINE (INC. FRONT EQUIPMENT - FIG 1-3)
 CALCULATED APPROX WEIGHT = 56,026 kg (123,516 lb)
 INCLUDES: KOBELCO SK500LC-9 BASE MACHINE (900mm SHOES), ALL FLUIDS, OEM HOIST CYLINDERS, BASE BOOM ASSY, TOP STD BOOM ASSY, OEM DIPPER CYLINDER, OEM DIPPER (4.04m), OEM ATTACHMENT CYLINDER AND LINKAGE. TILTING CAB & GUARD (SUPPLIED BY COMPANY WRENCH) - 1361 kg (3000 lb) ADDITIONAL C/WT (SUPPLIED BY COMPANY WRENCH) - 3810 kg (8,400 lb),

FRONT EQUIPMENT (FIG. 4)
 CALCULATED APPROX WEIGHT = 5,810kg (12,808 lb)
 TOP STANDARD BOOM, OEM DIPPER (4.04m), OEM DIPPER CYLINDER, OEM ATTACHMENT CYLINDER AND LINKAGE, A-FRAME (135kg / 298 lb).



BASE MACHINE (NO FRONT EQUIPMENT - FIG. 5)
 CALCULATED APPROX. WEIGHT = 50,351 kg (111,004 lb)
 INCLUDES: KOBELCO SK500LC-9 BASE MACHINE (900mm SHOES), ALL FLUIDS, OEM HOIST CYLINDERS, BASE BOOM ASSY, TILTING CAB & GUARD (SUPPLIED BY COMPANY WRENCH) - 1361 kg (3000 lb), ADDITIONAL C/WT (SUPPLIED BY COMPANY WRENCH) - 3810 kg (8,400 lb),



NOTES
 1. ALL WEIGHTS AND DIMENSIONS APPROXIMATE - BASE MACHINE

PROPRIETARY AND CONFIDENTIAL
 THE INFORMATION CONTAINED IN THIS DRAWING IS THE SOLE PROPERTY OF COMPANY WRENCH LTD. ANY REPRODUCTION IN PART OR AS A WHOLE WITHOUT THE WRITTEN PERMISSION OF COMPANY WRENCH LTD IS PROHIBITED.

MATERIAL:		
	NAME	DATE
DRAWN	ET	9/15/2014
APPROVED		
MFG. APPR.		



4805 SCOOPY LANE NW
 CARROLL, OHIO 43112
 740-654-5304

The Cutting Edge of Customer Service

UNLESS OTHERWISE SPECIFIED DIMENSION TOLERANCES ARE AS FOLLOWS: DECIMAL: ±0.015" FRACTIONAL: ±1/16" ANGULAR: ±1°			TITLE: SK500LC-9 - 86' H.R. CARRIER TRANS DIMS		
WEIGHT:		SCALE: NTS	SIZE B	DWG./PART NO.	
		SHEET 1 OF 1			

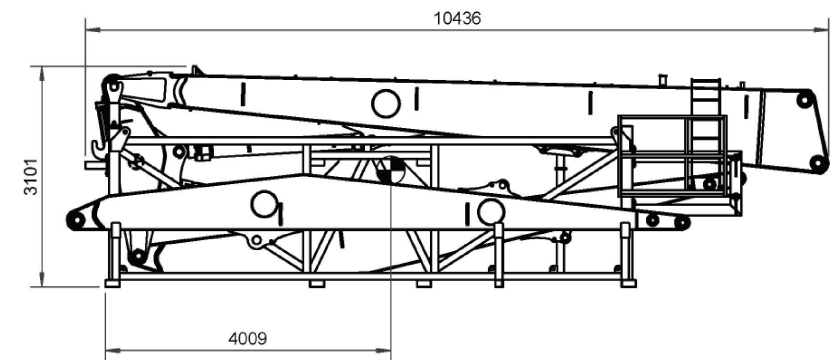
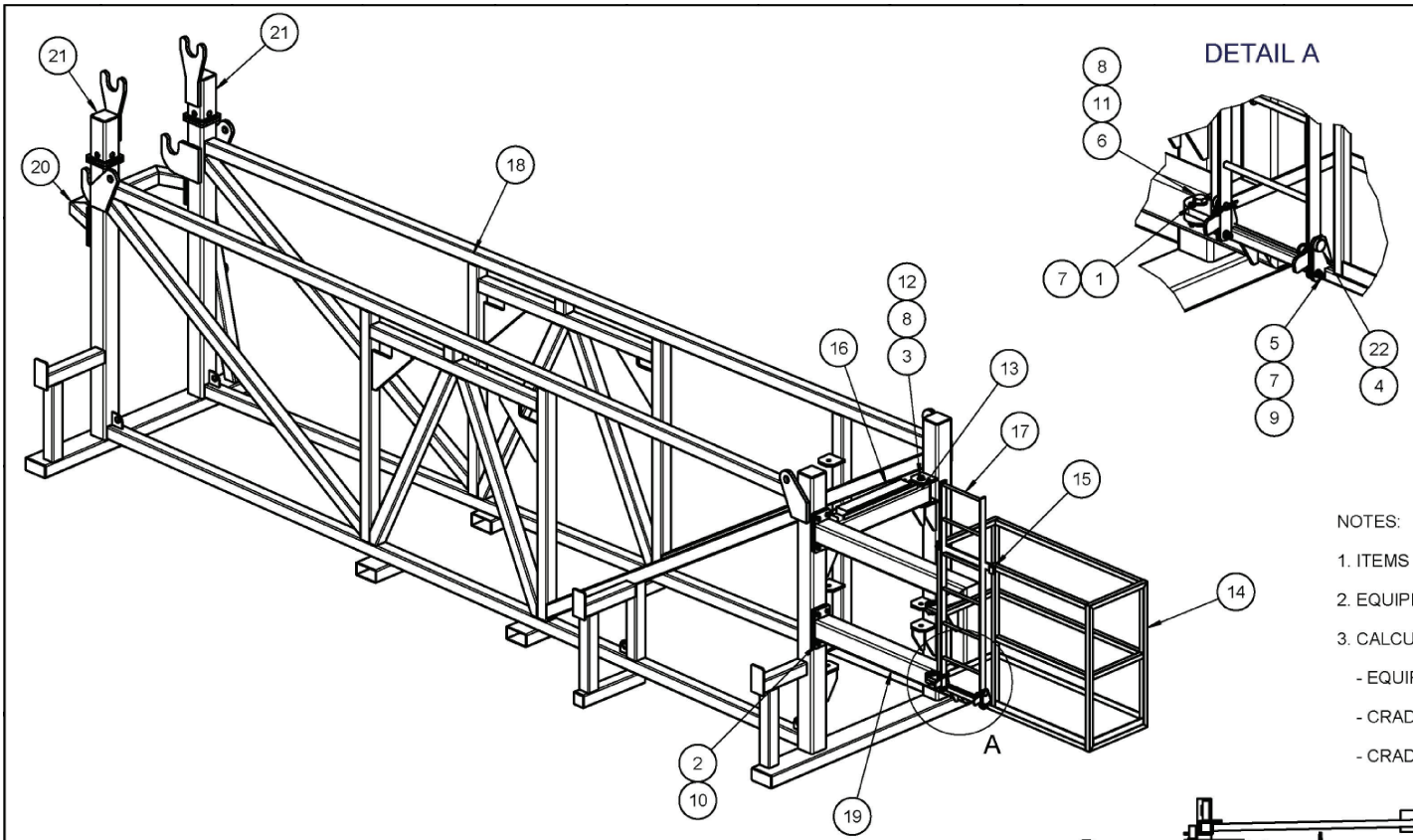
REVISIONS

ZONE	REV.	DESCRIPTION	DATE	APPROVED
------	------	-------------	------	----------

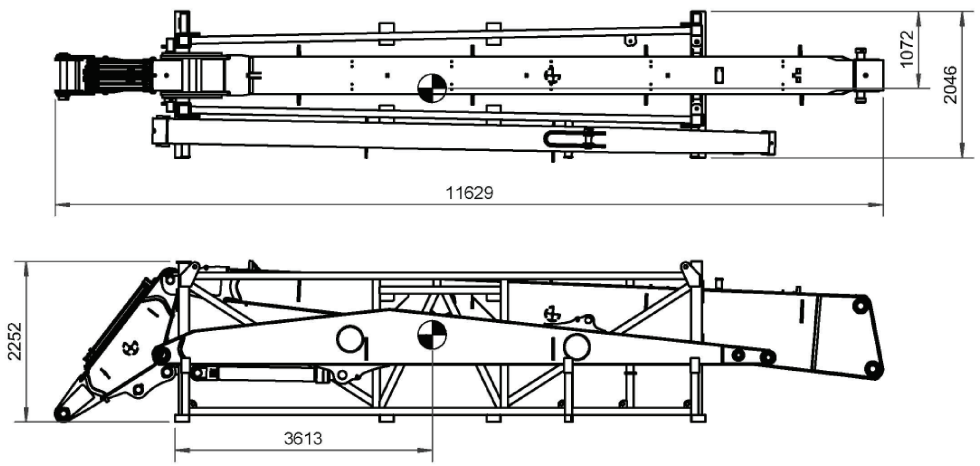
ITEM	PART No	DESCRIPTION	QTY
1	07051211	BOLT - M12 X 70 HEX HD	2
2	07051603	BOLT - M16 X 30 HEX HD	16
3	07052427	M24 X 200mm LONG HEX BOLT Y/P	1
4	07190001	R - CLIP	2
5	07381207	SCREW - M12 X 50 HEX HD	2
6	07382413	SCREW - M24 X 80 HEX HD	2
7	07401214	NUT - M12 NYLOC TYPE (T) Y/P	5
8	07402414	M24 NYLOC TYPE (T) Y/P	3
9	07451220	WASHER - M12 PLAIN TYPE A	5
10	07451620	WASHER - M16 PLAIN	16
11	07452420	WASHER - M24 PLAIN TYPE A	2
12	07452720	M27 FORM (A) WASHER Y/P	2
13	31020109	CRADLE - ARM SUPPORT WELDMENT	1
14	31020140	PLATFORM WELDMENT	1
15	31020210	FLAT - SAFETY GATE	1
16	31020238	TIMBER PACKER	1
17	31020276	LADDER WELDMENT	1
18	31021179	CRADLE W'MENT	1
19	31021199	CRADLE SUB W'MENT	1
20	31021200	CRADLE SUB W'MENT	1
21	31021204	YOKE INSERT W'MENT	2
22	65060009	HEADED PIN	2

NOTES:

- ITEMS 14, 17, 19, 20 & 21 REMOVABLE FOR TRANSPORTING IN CONTAINER.
- EQUIPMENT SHOWN FOR REFERENCE ONLY.
- CALCULATED APPROXIMATE WEIGHT
 - EQUIPMENT ONLY - 7653 Kg (16,871 lb)
 - CRADLE ONLY (NO EQUIPMENT) - 2020kg (4,453 lb)
 - CRADLE AND EQUIPMENT - 9673kg (21,325 lb)



EQUIPMENT CONFIGURATION - NON-CONTAINERIZED TRANSPORT



EQUIPMENT CONFIGURATION - CONTAINERIZED TRANSPORT

MATERIAL:

	NAME	DATE
DRAWN	ET	9/15/2014
APPROVED		
MFG. APPR.		

UNLESS OTHERWISE SPECIFIED DIMENSION TOLERANCES ARE AS FOLLOWS:

- DECIMAL: ±0.015"
- FRACTIONAL: ±1/16"
- ANGULAR: ±1°

WEIGHT:



4805 SCOOPY LANE NW
CARROLL, OHIO 43112
740-654-5304

The Cutting Edge of Customer Service

TITLE: SK500LC-9 - 86' H.R. FRONT TRANS DIMS

SCALE: NTS	SIZE	DWG./PART NO.
SHEET 1 OF 1	B	

PROPRIETARY AND CONFIDENTIAL
THE INFORMATION CONTAINED IN THIS DRAWING IS THE SOLE PROPERTY OF COMPANY WRENCH LTD. ANY REPRODUCTION IN PART OR AS A WHOLE WITHOUT THE WRITTEN PERMISSION OF COMPANY WRENCH LTD IS PROHIBITED.

REVISIONS				
ZONE	REV.	DESCRIPTION	DATE	APPROVED

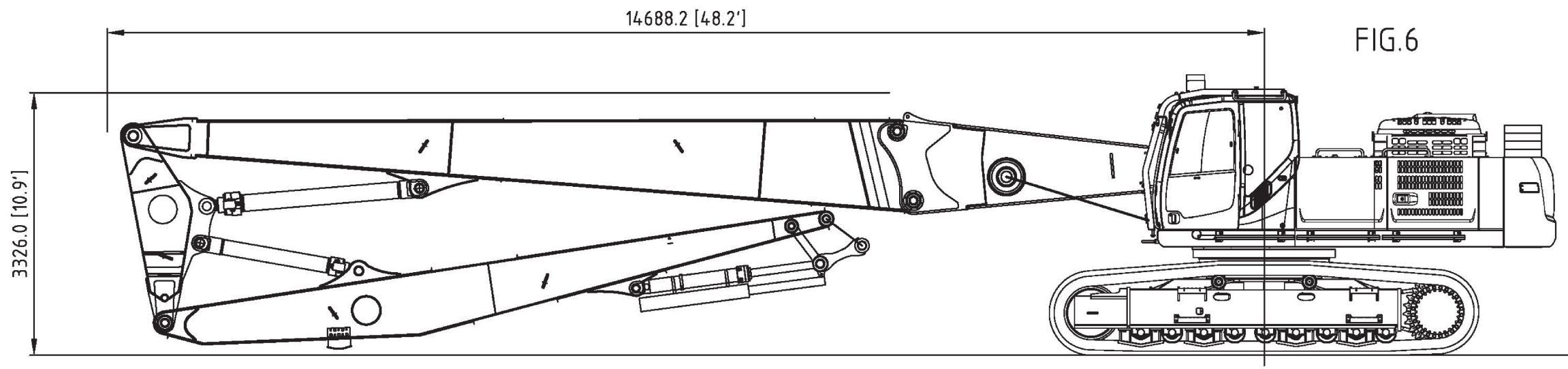
BASE MACHINE (INC. DEMO EQUIPMENT - NO ATTACHMENT - FIG.6)

CALCULATED APPROX WEIGHT = 58,004 kg (127,877 lb)

INCLUDES: KOBELCO SK500LC-9 BASE MACHINE (900mm SHOES), ALL FLUIDS, OEM HOIST CYLINDERS, BASE BOOM ASSY, DEMO BOOM ASSY, DEMO CYLINDER ASSOYS (X2), MID DIPPER ASSY, DEMO DIPPER ASSY, ATTACHMENT CYLINDER ASSY & GUARD ASSY, LINKAGE ASSY.

TILTING CAB & GUARD (SUPPLIED BY COMPANY WRENCH) - 1361 kg (3000 lb)

ADDITIONAL C/WT (SUPPLIED BY COMPANY WRENCH) - 3810 kg (8,400 lb),



NOTES
 1. ALL WEIGHTS AND DIMENSIONS APPROXIMATE - BASE MACHINE

PROPRIETARY AND CONFIDENTIAL
 THE INFORMATION CONTAINED IN THIS DRAWING IS THE SOLE PROPERTY OF COMPANY WRENCH LTD. ANY REPRODUCTION IN PART OR AS A WHOLE WITHOUT THE WRITTEN PERMISSION OF COMPANY WRENCH LTD IS PROHIBITED.

MATERIAL:		
	NAME	DATE
DRAWN	ET	9/15/2014
APPROVED		
MFG. APPR.		
UNLESS OTHERWISE SPECIFIED DIMENSION TOLERANCES ARE AS FOLLOWS:		
DECIMAL: ±0.015"		
FRACTIONAL: ±1/16"		
ANGULAR: ±1°		
WEIGHT:		



4805 SCOOPY LANE NW
 CARROLL, OHIO 43112
 740-654-5304

The Cutting Edge of Customer Service

TITLE: **SK500LC-9 - 86' H.R. OVERALL TRANS DIMS**

SCALE: NTS	SIZE	DWG./PART NO.
SHEET 1 OF 1	B	