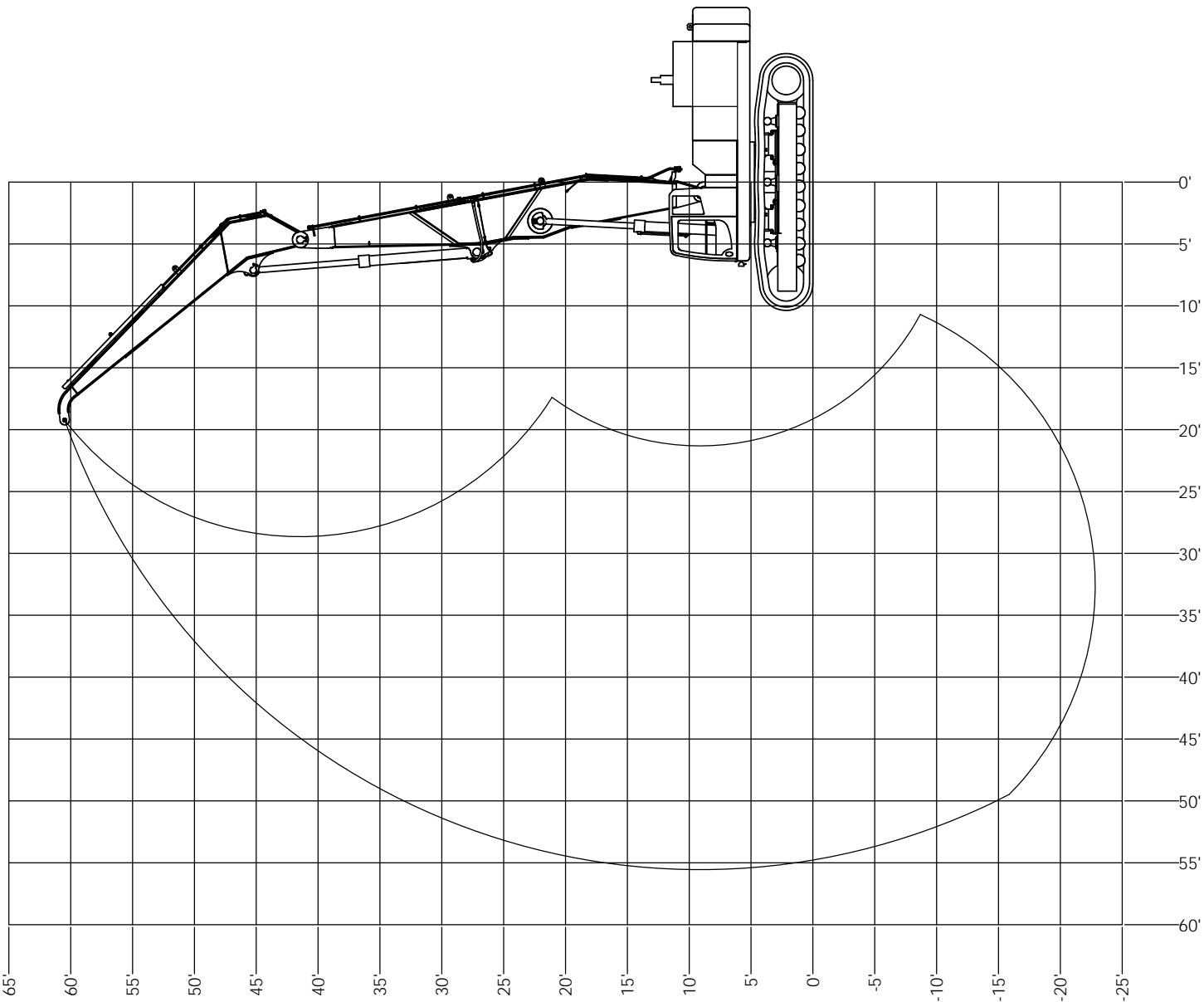


REVISIONS				
ZONE	REV.	DESCRIPTION	DATE	APPROVED



MATERIAL:		



4805 SCOOPY LANE NW
CARROLL, OHIO 43112
740-654-5304

The Cutting Edge of Customer Service

PROPRIETARY AND CONFIDENTIAL
THE INFORMATION CONTAINED HEREIN
IS THE SOLE PROPERTY OF
COMPANY WRENCH. ANY
REPRODUCTION OR
DISSEMINATION OF THIS
INFORMATION WITHOUT THE WRITTEN PERMISSION OF
COMPANY WRENCH IS PROHIBITED.

UNLESS OTHERWISE SPECIFIED
DIMENSIONS TO DIMENSIONS ARE
AS FOLLOWS:
DECIMAL: .0001"
FRACTIONAL: 1/16"
ANGULAR: .1°

TITLE: **PC750-7/PC800-8 M.H. 55' FRONT**
SCALE: 1:50
SHEET 1 OF 1
SIZE: **D**
DWG./PART NO.: **0M11271-1**

WEIGHT:

SHEET 1 OF 1

0M11271-1

Lifting Capacities
P/N 0M12271-2



PC800LC-8
55' Material Handler
Standard Gauge

Lift capacities calculated at attachment pivot point on stick (lbs)
No attachment on stick. Attachment weight must be subtracted.
Heavy lift off.

REACH																								HEIGHT	
65'		60'		55'		50'		45'		40'		35'		30'		25'		20'		15'		10'			
Side	Front	Side	Front	Side	Front	Side	Front	Side	Front	Side	Front	Side	Front	Side	Front	Side	Front	Side	Front	Side	Front	Side	Front		
																								65'	
																									60'
																									55'
																									50'
																									45'
																									40'
																									35'
																									30'
																									25'
																									20'
																									15'
																									10'
																									5'
																									0'
																									-5'
																									-10'
																									-15'
																									-20'
																									-25'

The following notes pertain to this machine equipped with 44" wide track pads and 10,000# additional counterweight:

1. Do not attempt to lift or hold any load that exceeds these rated values at their specified load radii and heights.
2. The least stable position is over the side.
3. The operator should be fully acquainted with machine operation before operating the machine.
4. Lifting capacities assume a machine standing on level, firm and uniform supporting surface. Operator must make allowance for job conditions such as soft or uneven ground, out of level conditions, side loads, sudden stopping of loads, hazardous conditions, inexperienced personnel, etc.
5. The above theoretical ratings are based on calculations derived from standard O.E.M. lift charts. They do not exceed 87% of hydraulic lifting capacity or 75% of tipping capacity. Rated loads marked with an asterisk (*) are limited by hydraulic lifting capacity.



Lift capacities calculated at attachment pivot point on stick (lbs)
No attachment on stick. Attachment weight must be subtracted.
Heavy lift on.

REACH																								HEIGHT	
65'		60'		55'		50'		45'		40'		35'		30'		25'		20'		15'		10'			
Side	Front	Side	Front	Side	Front	Side	Front	Side	Front	Side	Front	Side	Front	Side	Front	Side	Front	Side	Front	Side	Front	Side	Front		
																								65'	
																									60'
																									55'
																									50'
																									45'
																									40'
																									35'
																									30'
																									25'
																									20'
																									15'
																									10'
																									5'
																									0'
																									-5'
																									-10'
																									-15'
																									-20'
																									-25'

The following notes pertain to this machine equipped with 44" wide track pads and 10,000# additional counterweight:

1. Do not attempt to lift or hold any load that exceeds these rated values at their specified load radii and heights.
2. The least stable position is over the side.
3. The operator should be fully acquainted with machine operation before operating the machine.
4. Lifting capacities assume a machine standing on level, firm and uniform supporting surface. Operator must make allowance for job conditions such as soft or uneven ground, out of level conditions, side loads, sudden stopping of loads, hazardous conditions, inexperienced personnel, etc.
5. The above theoretical ratings are based on calculations derived from standard O.E.M. lift charts. They do not exceed 87% of hydraulic lifting capacity or 75% of tipping capacity. Rated loads marked with an asterisk (*) are limited by hydraulic lifting capacity.



Lift capacities calculated at attachment pivot point on stick (lbs)
No attachment on stick. Attachment weight must be subtracted.
Heavy lift off.

REACH																								HEIGHT	
65'		60'		55'		50'		45'		40'		35'		30'		25'		20'		15'		10'			
Side	Front	Side	Front	Side	Front	Side	Front	Side	Front	Side	Front	Side	Front	Side	Front	Side	Front	Side	Front	Side	Front	Side	Front		
																								65'	
																									60'
																									55'
																									50'
																									45'
																									40'
																									35'
																									30'
																									25'
																									20'
																									15'
																									10'
																									5'
																									0'
																									-5'
																									-10'
																									-15'
																									-20'
																									-25'

The following notes pertain to this machine equipped with 44" wide track pads and gauge widened to 14':

1. Do not attempt to lift or hold any load that exceeds these rated values at their specified load radii and heights.
2. The least stable position is over the side.
3. The operator should be fully acquainted with machine operation before operating the machine.
4. Lifting capacities assume a machine standing on level, firm and uniform supporting surface. Operator must make allowance for job conditions such as soft or uneven ground, out of level conditions, side loads, sudden stopping of loads, hazardous conditions, inexperienced personnel, etc.
5. The above theoretical ratings are based on calculations derived from standard O.E.M. lift charts. They do not exceed 87% of hydraulic lifting capacity or 75% of tipping capacity. Rated loads marked with an asterisk (*) are limited by hydraulic lifting capacity.



Lift capacities calculated at attachment pivot point on stick (lbs)
No attachment on stick. Attachment weight must be subtracted.
Heavy lift on.

REACH																								HEIGHT	
65'		60'		55'		50'		45'		40'		35'		30'		25'		20'		15'		10'			
Side	Front	Side	Front	Side	Front	Side	Front	Side	Front	Side	Front	Side	Front	Side	Front	Side	Front	Side	Front	Side	Front	Side	Front		
																								65'	
																									60'
																									55'
																									50'
																									45'
																									40'
																									35'
																									30'
																									25'
																									20'
																									15'
																									10'
																									5'
																									0'
																									-5'
																									-10'
																									-15'
																									-20'
																									-25'

The following notes pertain to this machine equipped with 44" wide track pads and gauge widened to 14':

1. Do not attempt to lift or hold any load that exceeds these rated values at their specified load radii and heights.
2. The least stable position is over the side.
3. The operator should be fully acquainted with machine operation before operating the machine.
4. Lifting capacities assume a machine standing on level, firm and uniform supporting surface. Operator must make allowance for job conditions such as soft or uneven ground, out of level conditions, side loads, sudden stopping of loads, hazardous conditions, inexperienced personnel, etc.
5. The above theoretical ratings are based on calculations derived from standard O.E.M. lift charts. They do not exceed 87% of hydraulic lifting capacity or 75% of tipping capacity. Rated loads marked with an asterisk (*) are limited by hydraulic lifting capacity.