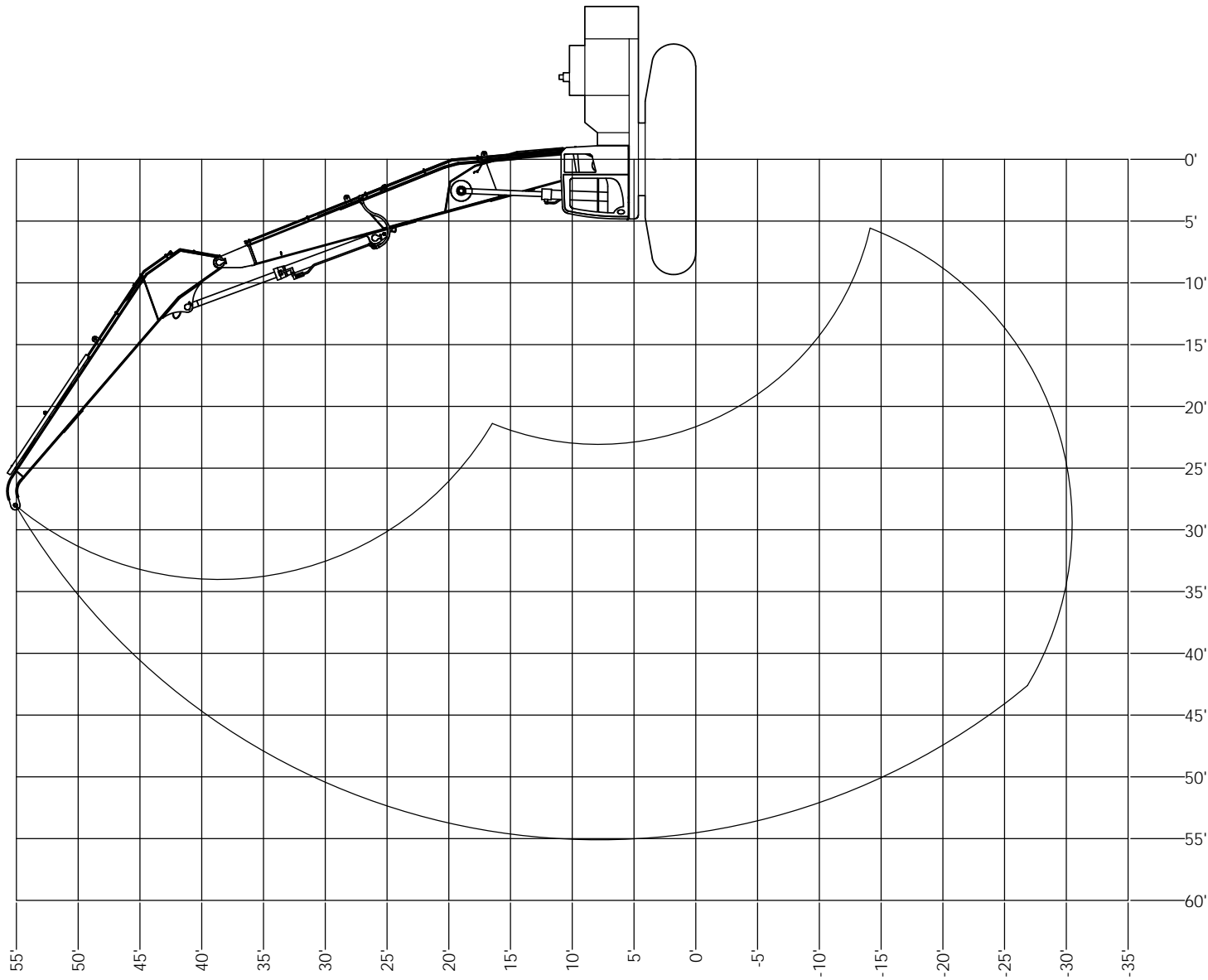



REVISIONS				
ZONE	REV.	DESCRIPTION	DATE	APPROVED



MATERIAL:			 <p>4805 SCOOPY LANE NW CARROLL, OHIO 43112 740-654-5304</p> <p><i>The Cutting Edge of Customer Service</i></p>
DESIGN	DATE	REV.	
APPROVED	BY	DATE	
REV.	DATE	BY	
<small>UNLESS OTHERWISE SPECIFIED DIMENSIONS FOR PARTS ARE AS FOLLOWS:</small> DECIMAL: 80.015" FRACTIONAL: 1/16" ANGLE: 1°			TITLE: PC600LC-8/PC650LC-8 M.H. RANGE
<small>PROPRIETARY AND CONFIDENTIAL: THE INFORMATION CONTAINED HEREIN IS THE SOLE PROPERTY OF COMPANY WRENCH. ANY REPRODUCTION OR DISSEMINATION WITHOUT THE WRITTEN PERMISSION OF COMPANY WRENCH IS PROHIBITED.</small>			SCALE: 1:50 SIZE: D SHEET 1 OF 1
DWG./PART NO.: 0M12658-1			

Lifting Capacities
P/N 0M12658-2



PC600LC-8/PC650LC-8
55' Material Handler
Standard Gauge

Lift capacities calculated at attachment pivot point on stick (lbs).
No attachment on stick. Attachment weight must be subtracted.
Heavy lift on.

REACH																				HEIGHT
55'		50'		45'		40'		35'		30'		25'		20'		15'		10'		
Side	Front	Side	Front	Side	Front	Side	Front	Side	Front	Side	Front	Side	Front	Side	Front	Side	Front	Side	Front	
									* 20,722	* 20,722										50'
							* 19,708	* 19,708	* 23,084	* 23,084										45'
							* 21,452	* 21,452	* 22,627	* 22,627										40'
				18,774	* 20,175	* 21,327	* 21,327	* 22,649	* 22,649											35'
		15,492	* 17,990	18,710	* 20,179	* 21,530	* 21,530	* 23,073	* 23,073											30'
		15,424	* 18,942	18,482	* 20,387	* 21,981	* 21,981	* 23,835	* 23,835											25'
		15,234	* 19,041	18,139	* 20,718	21,871	* 22,601	* 24,849	* 24,849	* 27,651	* 27,651									20'
		14,972	* 19,158	17,719	* 21,090	21,248	* 23,294	25,967	* 25,991	* 29,476	* 29,476	* 34,239	* 34,239							15'
12,597	* 16,947	14,676	* 19,209	17,263	* 21,409	20,579	* 23,941	24,987	* 27,092	31,140	* 31,267	* 37,188	* 37,188							10'
12,440	* 16,504	14,380	* 19,099	16,811	* 21,571	19,920	* 24,408	24,030	* 27,958	29,717	* 32,708	38,112	* 39,530							5'
		14,118	* 18,713	16,404	* 21,458	19,328	* 24,553	23,182	* 28,396	28,490	* 33,507	36,291	* 40,776							0'
		13,921	* 17,903	16,077	* 20,938	18,848	* 24,234	22,505	* 28,237	27,550	* 33,454	34,996	* 40,676	* 32,772	* 32,772					-5'
		13,823	* 16,438	15,859	* 19,846	18,511	* 23,300	22,033	* 27,332	26,924	* 32,413	34,210	* 39,180	* 31,615	* 31,615	* 18,560	* 18,560			-10'
		* 13,869	* 13,869	15,780	* 17,953	18,339	* 21,572	21,778	* 25,532	26,599	* 30,281	33,854	* 36,297	* 33,074	* 33,074	* 21,623	* 21,623	* 15,716	* 15,716	-15'
				* 14,844	* 14,844	18,354	* 18,791	21,745	* 22,643	26,554	* 26,924	* 31,985	* 31,985	* 35,907	* 35,907	* 24,833	* 24,833	* 19,045	* 19,045	-20'
						* 14,491	* 14,491	* 18,356	* 18,356	* 22,119	* 22,119	* 26,096	* 26,096	* 30,370	* 30,370	* 28,232	* 28,232			-25'
										* 15,462	* 15,462	* 18,320	* 18,320							-30'

The following notes pertain to this machine equipped with 35.5" wide track pads and 10,000# additional counterweight:

1. Do not attempt to lift or hold any load that exceeds these rated values at their specified load radii and heights.
2. The least stable position is over the side.
3. The operator should be fully acquainted with machine operation before operating the machine.
4. Lifting capacities assume a machine standing on level, firm and uniform supporting surface. Operator must make allowance for job conditions such as soft or uneven ground, out of level conditions, side loads, sudden stopping of loads, hazardous conditions, inexperienced personnel, etc.
5. The above theoretical ratings are based on calculations derived from standard O.E.M. lift charts. They do not exceed 87% of hydraulic lifting capacity or 75% of tipping capacity. Rated loads marked with an asterisk (*) are limited by hydraulic lifting capacity.

Lifting Capacities
P/N 0M12658-3

PC600LC-8/PC650LC-8
55' Material Handler
Standard Gauge



Lift capacities calculated at attachment pivot point on stick (lbs).
No attachment on stick. Attachment weight must be subtracted.
Heavy lift off.

REACH																				HEIGHT
55'		50'		45'		40'		35'		30'		25'		20'		15'		10'		
Side	Front	Side	Front	Side	Front	Side	Front	Side	Front	Side	Front	Side	Front	Side	Front	Side	Front	Side	Front	
										* 20,722	* 20,722									50'
								* 19,708	* 19,708	* 21,070	* 21,070									45'
								* 19,501	* 19,501	* 20,662	* 20,662									40'
				* 18,265	* 18,265	* 19,386	* 19,386	* 20,676	* 20,676											35'
		15,492	* 17,076	* 18,264	* 18,264	* 19,559	* 19,559	* 21,044	* 21,044											30'
		15,424	* 17,072	* 18,439	* 18,439	* 19,949	* 19,949	* 21,711	* 21,711											25'
		15,234	* 17,150	18,139	* 18,721	* 20,486	* 20,486	* 22,597	* 22,597	* 25,232	* 25,232									20'
		14,972	* 17,239	17,719	* 19,034	* 21,083	* 21,083	* 23,590	* 23,590	* 26,830	* 26,830	* 31,260	* 31,260							15'
12,597	* 15,171	14,676	* 17,264	17,263	* 19,296	20,579	* 21,634	* 24,541	* 24,541	* 28,389	* 28,389	* 33,839	* 33,839							10'
12,440	* 14,748	14,380	* 17,140	16,811	* 19,413	19,920	* 22,019	24,030	* 25,276	* 29,626	* 29,626	* 35,863	* 35,863							5'
		14,118	* 16,762	16,404	* 19,278	19,328	* 22,111	23,182	* 25,621	28,490	* 30,282	36,291	* 36,897							0'
		13,921	* 15,995	16,077	* 18,771	18,848	* 21,779	22,505	* 25,425	27,550	* 30,167	34,996	* 36,717	* 32,772	* 32,772					-5'
		13,823	* 14,628	15,859	* 17,742	18,511	* 20,888	22,033	* 24,551	26,924	* 29,157	34,210	* 35,277	* 31,615	* 31,615	* 18,560	* 18,560			-10'
		* 12,249	* 12,249	15,780	* 15,980	18,339	* 19,273	21,778	* 22,864	26,599	* 27,157	* 32,578	* 32,578	* 33,074	* 33,074	* 21,623	* 21,623	* 15,716	* 15,716	-15'
				* 13,103	* 13,103	* 16,693	* 16,693	* 20,181	* 20,181	* 24,040	* 24,040	* 28,578	* 28,578	* 34,076	* 34,076	* 24,833	* 24,833	* 19,045	* 19,045	-20'
						* 12,722	* 12,722	* 16,218	* 16,218	* 19,598	* 19,598	* 23,137	* 23,137	* 26,886	* 26,886	* 28,232	* 28,232			-25'
										* 13,458	* 13,458	* 15,966	* 15,966							-30'

The following notes pertain to this machine equipped with 35.5" wide track pads and 10,000# additional counterweight:

1. Do not attempt to lift or hold any load that exceeds these rated values at their specified load radii and heights.
2. The least stable position is over the side.
3. The operator should be fully acquainted with machine operation before operating the machine.
4. Lifting capacities assume a machine standing on level, firm and uniform supporting surface. Operator must make allowance for job conditions such as soft or uneven ground, out of level conditions, side loads, sudden stopping of loads, hazardous conditions, inexperienced personnel, etc.
5. The above theoretical ratings are based on calculations derived from standard O.E.M. lift charts. They do not exceed 87% of hydraulic lifting capacity or 75% of tipping capacity. Rated loads marked with an asterisk (*) are limited by hydraulic lifting capacity.

Lifting Capacities
P/N 0M12658-4

PC600LC-8/PC650LC-8
55' Material Handler
Widened Gauge



Lift capacities calculated at attachment pivot point on stick (lbs).
No attachment on stick. Attachment weight must be subtracted.
Heavy lift on.

REACH																				HEIGHT		
55'		50'		45'		40'		35'		30'		25'		20'		15'		10'				
Side	Front	Side	Front	Side	Front	Side	Front	Side	Front	Side	Front	Side	Front	Side	Front	Side	Front	Side	Front			
																						50'
																						45'
																						40'
																						35'
																						30'
																						25'
																						20'
																						15'
																						10'
13,667	15,019	15,930	17,488	18,765	20,598	22,430	23,941	27,092	27,092	31,267	31,267	37,188	37,188								5'	
13,506	14,856	15,626	17,178	18,298	20,120	21,747	23,944	26,361	27,958	32,708	32,708	39,530	39,530								0'	
		15,356	16,903	17,878	19,690	21,133	23,313	25,476	28,192	31,559	33,507	40,728	40,776								-5'	
		15,154	16,696	17,540	19,344	20,635	22,801	24,769	27,463	30,569	33,454	39,345	40,676	32,772	32,772						-10'	
		15,053	16,438	17,315	19,114	20,285	22,442	24,276	26,954	29,909	32,413	38,505	39,180	31,615	31,615	18,560	18,560				-15'	
		13,869	13,869	17,234	17,953	20,107	21,572	24,010	25,532	29,566	30,281	36,297	36,297	33,074	33,074	21,623	21,623	15,716	15,716		-20'	
																						-25'
																						-30'

The following notes pertain to this machine equipped with 35.5" wide track pads and gauge widened to 13'-4":

1. Do not attempt to lift or hold any load that exceeds these rated values at their specified load radii and heights.
2. The least stable position is over the side.
3. The operator should be fully acquainted with machine operation before operating the machine.
4. Lifting capacities assume a machine standing on level, firm and uniform supporting surface. Operator must make allowance for job conditions such as soft or uneven ground, out of level conditions, side loads, sudden stopping of loads, hazardous conditions, inexperienced personnel, etc.
5. The above theoretical ratings are based on calculations derived from standard O.E.M. lift charts. They do not exceed 87% of hydraulic lifting capacity or 75% of tipping capacity. Rated loads marked with an asterisk (*) are limited by hydraulic lifting capacity.