

KOMATSU®

PC650LC-8

NET HORSEPOWER

320 kW **429 HP** @ 1800 rpm

OPERATING WEIGHT

63199–66401 kg **139,330–146,390 lb**

BUCKET CAPACITY

1.57–3.81 m³ **2.05–4.98 yd³**

PC
650
LC



Photo may include optional equipment.

HYDRAULIC EXCAVATOR

WALK-AROUND

Performance Features

- **High Work Equipment Speed**
Arm quick-return circuit and fast bucket dump speed provides efficient loading operation
- **Lift Mode**
Lift mode increases lifting capacity by 17%
- **Large Digging Force**
Pressing the Power Max button temporarily increases digging force by 8%
- **Two-mode Setting for Boom**
Switch selection allows either powerful digging or smooth boom operation
- **Excellent Swing Performance** is achieved by a twin swing motor system
- **Large Drawbar Pull and Steering Force** provides excellent mobility

Reliability Features

- **Strengthened Boom and Arm**
- **Fuel Pre-filter** with water separator equipped as standard
- **O-ring Face Seals**, which have excellent sealing performance, are used for the hydraulic hoses
- **High-pressure In-line Filtration**
Each main pump has a high pressure in-line filter to provide an extra level of hydraulic system protection on the high pressure side of the pump
- **Highly Reliable Electronic Devices**
Exclusively designed electronic devices have passed severe testing.
 - Controllers • Sensors • Connectors
 - Heat resistant wiring



Maintenance Features

- **Reversible Cooling Fan**
Fan reverse-rotation function simplifies radiator and oil cooler cleaning
- **Radiator and oil cooler are easily serviced with full-open type engine hood**
- **Centralized Arrangement of Engine Checkpoints**
- **Slip-resistant plates for improved foot traction during maintenance**
- **Large Handrails, Steps, and Catwalk** provide easy access to the engine and hydraulic equipment



KOMTRAX equipped machines can send location, SMR and operation maps to a secure website utilizing wireless technology. Machines also relay error codes, cautions, maintenance items, fuel levels, and much more.

Ecology and Economy

• Low Emission Engine

A powerful, turbocharged and air-to-air aftercooled SAA6D140E-5 engine provides 320 kW **429 HP** net. This engine is EPA Tier 3 and EU Stage 3A emissions certified, without sacrificing power or productivity.

• Economy Mode Four-level Setting

Enables the operator to select the appropriate Economy mode level to match the production requirement with the lowest fuel consumption

• Low Operational Noise

Meets the EU Tier 2 noise regulations.

- Electronically controlled variable speed fan drive
- Large hybrid fan
- Low-noise muffler and noise reducing cover around the muffler

NET HORSEPOWER

320 kW **429 HP** @ 1800 rpm

OPERATING WEIGHT

63199 – 66401 kg

139,330 – 146,390 lb

BUCKET CAPACITY

1.57 – 3.81 m³

2.05 – 4.98 yd³



Working Environment

• Large Comfortable Cab

- Low-noise cab design with viscous damper mounts
- Pressurized cab with large-capacity air conditioner
- High-back, heated, operator seat with console-mounted armrests
- OPG top guard Level 2 (ISO 10262) capable with optional bolt-on top guard

Large TFT LCD Color Monitor

- Easy to see and use large 7" multi-function color monitor
- Can be displayed in 12 languages for global support

TFT: Thin Film Transistor LCD: Liquid Crystal Display

Photo may include optional equipment.

PERFORMANCE FEATURES



Komatsu develops and produces all major components, such as engines, electronics and hydraulic components, in house. With this “Komatsu Technology,” and adding customer feedback, Komatsu is achieving great advancements in technology. To achieve both high levels of productivity and economical performance, Komatsu has developed the main components with a total control system. The result is a new generation of high performance and environment friendly excavators.

Low Emission Engine

The Komatsu SAA6D140E-5 engine is EPA Tier 3 and EU Stage 3A emissions certified, without sacrificing power or machine productivity.



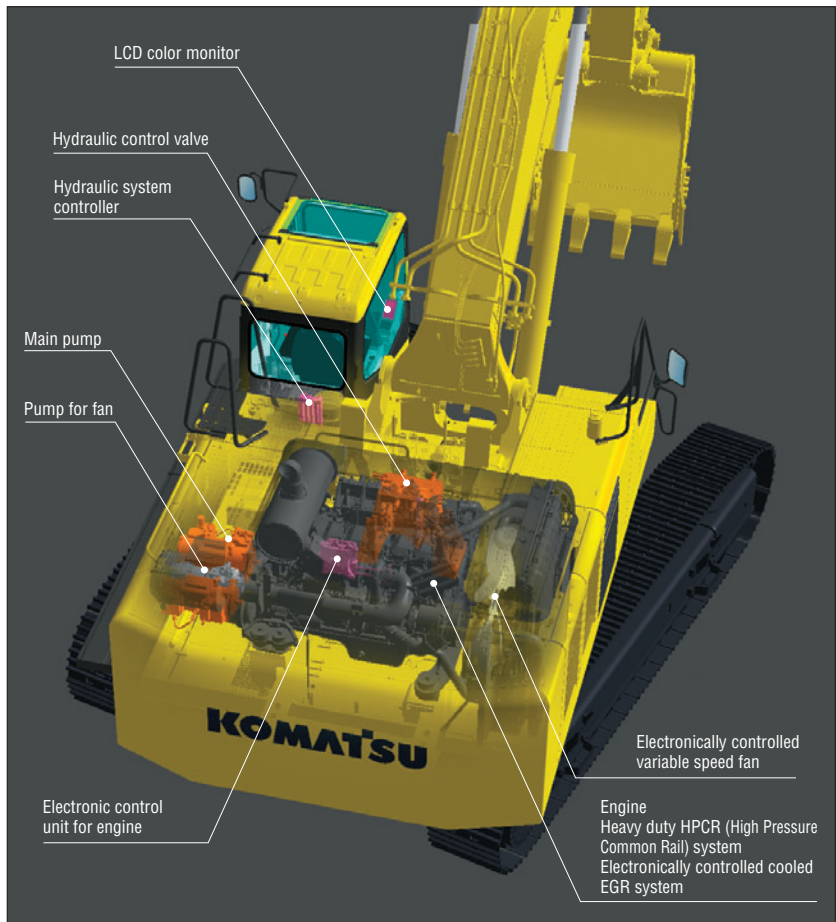
Lower and Economical Fuel Consumption Using Economy Mode

Enables the operator to set the Economy mode to one of four levels according to the working conditions so that the production requirement is achieved at the lowest fuel consumption.



Low Ambient Noise

Reduced noise by adoption of an electronically controlled variable speed fan drive, large hybrid fan and low-noise muffler.

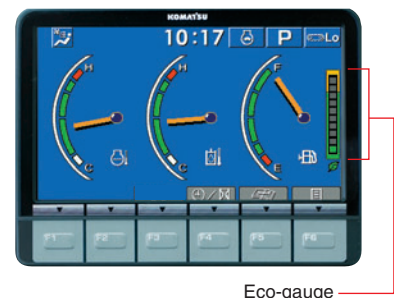


Electronically Controlled Variable Speed Fan Contributes to Low Fuel Consumption and Low Noise

The electronic control system sets the revolution speed of the cooling fan according to the coolant, hydraulic oil, and ambient temperature; effectively uses the engine output to prevent wasteful fuel consumption; and reduces noise during low-speed fan revolution.

Eco-gauge that Assists Energy-saving Operations

Equipped with Eco-gauge for environment friendly energy-saving operations. Focus on operation in the green range allows reduction of CO₂ emission and fuel consumption.



Idling Caution

To prevent unnecessary fuel consumption, an idling caution is displayed on the monitor if the engine idles for 5 minutes or more.



Auto Deceleration and Auto Idling System

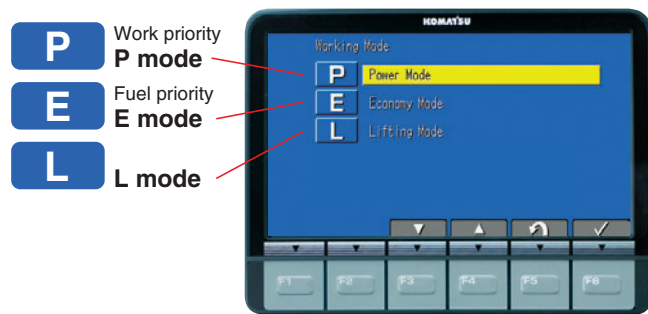
Equipped with Auto Deceleration system to reduce fuel consumption and operating noise. Also, engine idling speed can be set at a lower speed on the monitor with the auto idling system.

Working Modes Selectable

Power and Economy modes have been improved.

P mode – Power or work priority mode has low fuel consumption, but fast equipment speed and maximum power.

E mode – Economy or fuel saving mode further reduces fuel consumption, but maintains the P-mode-like work equipment speed for light-duty work.



You can easily select Power or Economy modes using the monitor panel to match performance to the application at hand.

Lift Mode

Gives 17% more lifting force when needed for heavy lifting applications.

Large Drawbar Pull and Steering Force

Since the machine has a large drawbar pull and a high steering force, it demonstrates excellent mobility, even when operating on an incline.

Large Digging Force

With the addition of the one-touch Power Max. function, digging force has been increased. (8 seconds of operation)

Maximum arm crowd force (SAE):

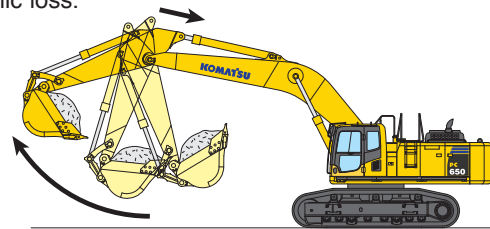
222 kN (24.9t) ➔ **238 kN (26.8t)** **8% UP**
(with Power Max.)

Maximum bucket digging force (SAE):

264 kN (29.7t) ➔ **285 kN (32.1t)** **8% UP**
(with Power Max.)

Work Equipment Speed Increased

Work equipment speed and compound operation speed become faster with the arm quick return circuit and the arm regeneration circuit, increasing productivity and reducing hydraulic loss.



Two-mode Setting for Boom

Smooth mode provides easy operation for gathering blasted rock and scraping operations. When maximum digging force is needed, switch to **Power mode** for more effective excavating.

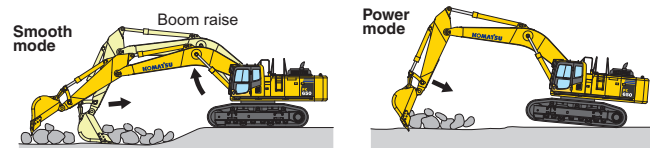
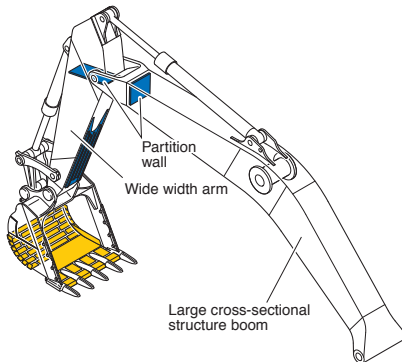


Photo may include optional equipment.

RELIABILITY FEATURES

Strengthened Boom and Arm

Thanks to large cross-sectional structures, thick high tensile strength steel plates, and partition walls, the boom and arm exhibit excellent durability and are highly resistant to bending and torsional stress.



O-Ring Face Seal

The hydraulic hose seal method has been changed from a conventional taper seal to an O-ring seal. This provides improved sealing performance during operation.

Frame Structure

The revolving frame and center frame swing circle mounts are one-piece non-welded structures that transmit force directly through the thick plate without passing through any welded joints.

Fuel Pre-Filter (with Water Separator)

Removes water and contaminants from the fuel to improve fuel system reliability.



Fuel pre-filter

High-Pressure In-line Filtration

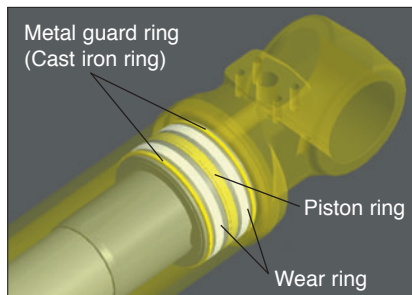
An in-line filter in the outlet port of each main hydraulic pump provides an extra level of hydraulic system protection, reducing failures caused by contamination.



In-line filters

Metal Guard Rings

Metal guard rings protect all the hydraulic cylinders and improve reliability.

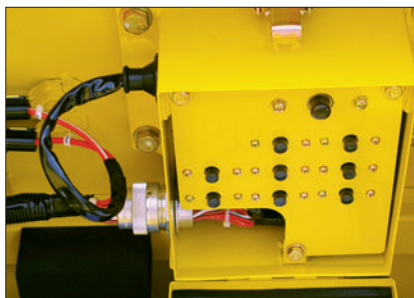


Heat-Resistant Wiring

Heat-resistant wiring is utilized for the engine electric circuit and other major component circuits.

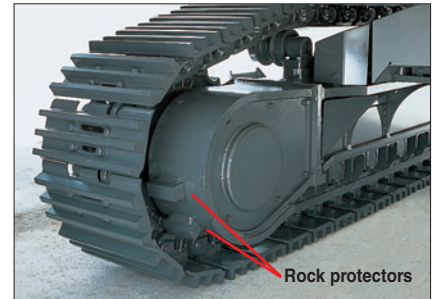
Circuit Breaker

With circuit breaker, the machine can be easily restarted after repair.

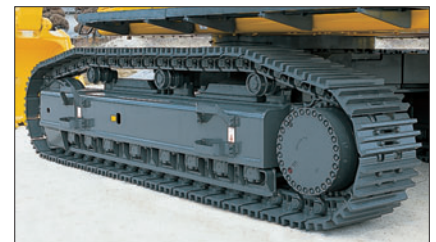


Sturdy Undercarriage

The undercarriage is strengthened to provide excellent reliability and durability when working on rocky ground or blasted rock.



Sturdy guards shield the travel motors and piping from rock damage.



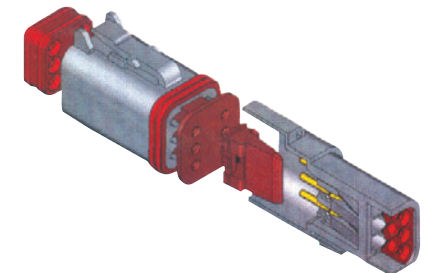
Track roller guard (full length, optional)

Strengthened Revolving Frame Underguard

Guards the machine body against rock damage and protects hydraulic components and the engine from intruding objects.

DT-Type Connectors

DT-type connectors seal tight and have higher reliability.



WORKING ENVIRONMENT



OPG Level 2 top guard (optional)

Photo may include optional equipment

Low Noise Design Cab

The newly-designed cab is highly rigid and has excellent sound absorption ability. With improvements in noise source reduction and the use of a low noise engine, hydraulic equipment, and air conditioner, the operator can work in quiet conditions.

Wide Newly-designed Cab

Newly-designed wide spacious cab includes a high-back, heated seat with a reclining backrest. The seat height and longitudinal inclination are easily adjusted using a pull-up lever. You can set the appropriate operational position of the armrest together with the console. Reclining the seat enables you to place it into a fully flat position with the headrest attached.



Seat with headrest reclined full flat

Pressurized Cab

The air conditioner, air filter and a higher internal cab air pressure (+6.0 mm Aq +0.2" Aq) minimize the amount of external dust that enters the cab.

WORKING ENVIRONMENT

Multi-position Controls

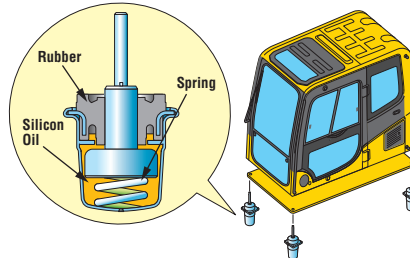
The multi-position, Proportional Pressure Control (PPC) levers allow the operator to work in comfort while maintaining precise control. A doubleslide mechanism allows the seat and control levers to move together or independently, allowing the operator to position the controls for maximum productivity and comfort.



Seat sliding amount: 340 mm 13.4"

Low Vibration with Cab Damper Mounting

The PC650LC-8 uses viscous cab damper mounts that incorporate a longer stroke and the addition of a spring. The cab damper mounting combined with a high rigidity deck reduces vibration at the operator seat.



Cab Equipment



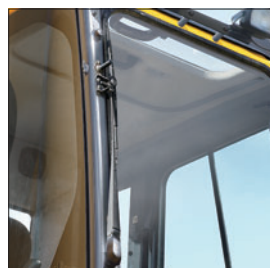
Skylight



Sliding Window and Large Side Mirror



Defroster



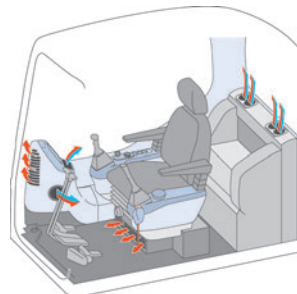
Cab Frame Mounted Wiper



Bottle Holder and Magazine Rack

Automatic Air Conditioner

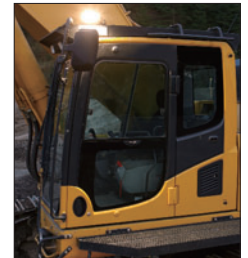
Enables you to easily and precisely set cab atmosphere with the instruments on the large LCD. The bi-level control function improves air flow and keeps the inside of the cab comfortable throughout the year.



General Features

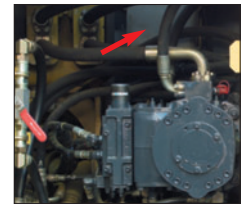
Step Light with Timer (standard)

provides light for about one minute to improve visibility for the operator when exiting the machine.



Pump/engine Room Partition

separates the engine room from the hydraulic compartment.



Thermal and Fan Guards

are placed around high-temperature parts of the engine and fan drive.

Slip-resistant Plates

Durable slip-resistant plates maintain excellent foot traction.

Horn Interconnected with Warning Light (standard)

gives visual and audible notice of the excavator's operation when activated.



OPG Level 2 top guard (optional)

OPG top guard Level 2 (ISO 10262) capable with optional bolt-on top guard.

Large LCD Color Monitor

Large Multi-Lingual LCD Monitor

A large user-friendly color monitor enables accurate and smooth work. Improved screen visibility is achieved by using a TFT liquid crystal display that can be easily read at various angles and lighting conditions. All switches are simple and easy to operate. Industry-first function keys facilitate multi-function operations. The monitor displays data in 12 languages to globally support operators around the world.

Indicators

- 1 Auto-decelerator
- 2 Working mode
- 3 Travel speed
- 4 Engine water temperature gauge
- 5 Hydraulic oil temperature gauge
- 6 Fuel gauge
- 7 Eco-gauge
- 8 Function switches menu

Basic operation switches

- 1 Auto-decelerator
- 2 Working mode selector
- 3 Travel speed selector
- 4 Buzzer cancel
- 5 Wiper
- 6 Windshield washer



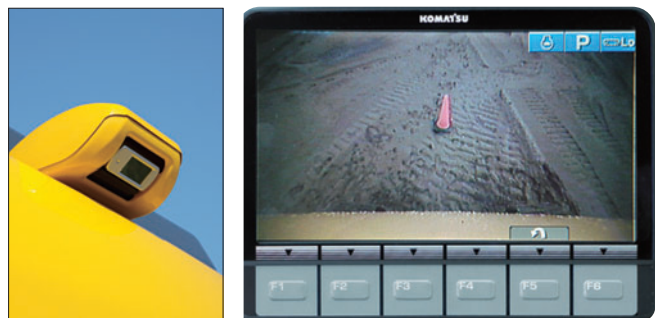
Mode Selection

The multi-function color monitor has Power mode (two levels), Economy mode (four levels), and Lifting mode.

Working Mode	Application	Advantage
P (P0,P1)	Power Mode	<ul style="list-style-type: none"> ● Maximum production/power ● Fast cycle times
E (E0,E1,E2,E3)	Economy Mode	<ul style="list-style-type: none"> ● Good cycle times ● Good fuel economy
L	Lift Mode	<ul style="list-style-type: none"> ● Hydraulic pressure is increased 17%.

Rear-view Monitoring System (standard)

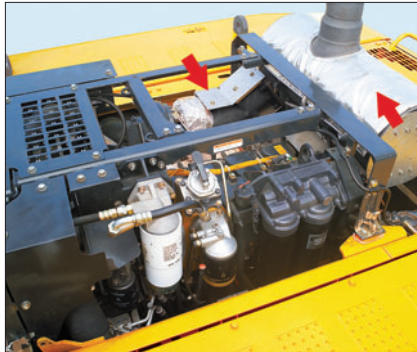
On the large LCD color monitor, the operator can access and view one standard camera that will display areas directly behind the machine. An optional 2-camera system is available.



MAINTENANCE FEATURES

Easy Checking and Maintenance of Engine

Engine check points are concentrated on one side of the engine to simplify daily checks. Thermal guards are placed around high-temperature parts such as the turbocharger.



Long-life Oil, Filter

Uses high-performance filtering materials and long-life oil. Extends the oil and filter replacement interval.



Hydraulic oil filter (Eco-white element)

Engine oil & Engine oil filter	every 500 hours
Hydraulic oil	every 5000 hours
Hydraulic oil filter	every 1000 hours

Electric Operated Grease Gun Equipped with Hose Reel

Greasing is made easy with the electric operated grease gun and indicator.



Indicator Grease gun

Wide Catwalk and Large Handrails

Easier operator cab access and maintenance checks.



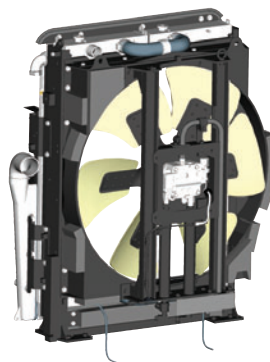
Slip-Resistant Plates

are provided for improved foot traction.



Reversible Cooling Fan

The reverse-rotation function of the hydraulic driven fan simplifies cleaning of the cooling unit.



Access Steps

Steps allow access from the left hand catwalk to the top of the machine for engine and maintenance checks.



Dust Indicator with 5-Step Indication

5-step indicator identifies air filter condition.



Easy Service Radiator

Engine hood opens fully to simplify removal and installation of the radiator. The hood can be opened vertically by changing the position of the torsion bar.



Self-Diagnostic Monitor

The PC650LC-8 features an advanced on-board diagnostics system. The Komatsu-exclusive system identifies maintenance items, reduces diagnostic times, indicates oil and filter replacement hours, and displays error codes.

Continuous Machine Monitoring System

When the starting switch is turned ON, check-before-starting items and caution items appear on the LCD. If abnormalities are found, a warning lamp blinks and a warning buzzer sounds. The machine continuously runs checks to minimize the development of serious problems and allow the operator to concentrate on the work at hand.

Abnormalities Display with Code

When an abnormality occurs during operation, a user code is displayed. When an important user code is displayed, a caution lamp blinks and a warning buzzer sounds to alert the operator to take action.

Maintenance Function

When the machine exceeds the oil or filter replacement time, the maintenance monitor will display lights to inform the operator.

Trouble Data Memory Function

The monitor stores abnormality data for effective troubleshooting.

EMMS

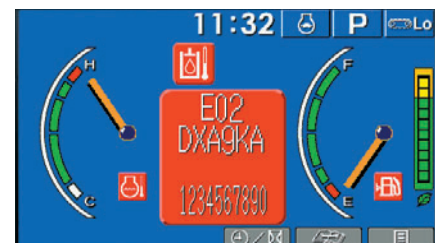
Equipment Management Monitoring System



Normal display

	Interval	Remain.
Engine Oil Change	500 h	499 h
Eng Oil Filter Change	500 h	499 h
Fuel Main Filter Change	1000 h	999 h
Fuel Pre Filter Change	500 h	499 h
Hyd Oil Filter Change	1000 h	999 h
H/Tank Breather Change	500 h	499 h

Maintenance time display



Error code display



Photo may include optional equipment.

KOMTRAX® EQUIPMENT MONITORING



KOMTRAX is Komatsu's remote equipment monitoring and management system. KOMTRAX gathers critical machine and operation information and provides it in a user-friendly format so that you can make well-informed decisions. KOMTRAX gives you more control of your equipment and better control of your business!

KOMTRAX comes standard on all new Komatsu excavators with free communications services for the first five years of ownership. It is a powerful tool and makes Komatsu excavators an even better purchase!

Fleet Optimization

KOMTRAX tells you how your machines and operators are performing. KOMTRAX provides:

- Fuel consumption data and trends, by unit or fleet
- Machine fuel level
- Machine utilization
- Actual working hours/Machine idle hours
- Attachment usage hours
- Machine travel hours
- Machine load analysis
- Operating mode ratios

Location and Asset Management

KOMTRAX tells you where your machines are and can help prevent unauthorized use. KOMTRAX provides:

- GPS location/Operation maps
- Out-of-area and movement alert with location and time
- Engine, nighttime, and calendar lock

Maintenance Management

KOMTRAX monitors the health of your machines and provides critical information so that you, and your distributor, can take proactive maintenance measures and reduce downtime. KOMTRAX provides:

- Service Meter Reading (SMR)
- Cautions/Abnormality codes
- Maintenance replacement notifications

Easy and Flexible Access to Information

With KOMTRAX, information about your machines is available anytime, anywhere. KOMTRAX provides:

- A user-friendly KOMTRAX website that provides customized access to your machine information
- E-mail and text alerts
- Web dial-up service
- Monthly fleet summary reports

For more information, ask your distributor, pick up a KOMTRAX brochure, or go to www.komatsuamerica.com/komtrax.



PC650LC-8 HYDRAULIC EXCAVATOR

SPECIFICATIONS



ENGINE

Model Komatsu SAA6D140E-5*
 Type Water-cooled, 4-cycle, direct injection
 Aspiration Turbocharged, aftercooled, cooled EGR
 Number of cylinders 6
 Bore 140 mm **5.51"**
 Stroke 165 mm **6.50"**
 Piston displacement 15.24 ltr **930 in³**
 Governor All-speed, electronic
 Horsepower:
 SAE J1995 Gross 323 kW **433 HP**
 ISO 9249 / SAE J1349 Net 320 kW **429 HP**
 Hydraulic fan at maximum speed Net 288 kW **386 HP**
 Rated rpm 1800 rpm
 Fan drive type Hydraulic
 *EPA Tier 3 and EU stage 3A emissions certified



HYDRAULIC SYSTEM

Type Open-center load-sensing system
 Number of selectable working modes 3
 Main pumps:
 Type Variable-capacity piston
 Pumps for Boom, arm, bucket, swing, and travel circuits
 Maximum flow:
 Main 2 x 410 ltr/min **2 x 108 U.S. gal/min**
 Sub-pump for control circuit Gear type
 Fan drive pump Variable-capacity piston type
 Hydraulic motors:
 Travel 2 x axial piston motors with parking brake
 Swing 2 x axial piston motors with swing holding brake
 Relief valve settings:
 Implement circuits 31.9 MPa 325 kgf/cm² **4,620 psi**
 Travel circuit 34.3 MPa 350 kgf/cm² **4,980 psi**
 Swing circuit 25.5 MPa 260 kgf/cm² **3,700 psi**
 Pilot circuit 2.9 MPa 30 kgf/cm² **430 psi**
 Hydraulic cylinders:
 Number of cylinders—bore x stroke
 Boom 2 – 185 mm x 1725 mm **7.3" x 67.9"**
 Arm 1 – 200 mm x 2045 mm **7.9" x 80.5"**
 Bucket 1 – 185 mm x 1425 mm **7.3" x 56.1"**



DRIVES AND BRAKES

Steering control Two levers with pedals
 Drive method Fully hydrostatic
 Travel motor Axial piston motor, in-shoe design
 Reduction system Planetary triple reduction
 Maximum drawbar pull 415 kN 42300 kg **93,250 lb**
 Gradeability 70%
 Maximum travel speed
 Low 3.0 km/h **1.9 mph**
 High 4.9 km/h **3.0 mph**
 Service brake Hydraulic lock
 Parking brake Oil disc brake



SWING SYSTEM

Driven method Hydraulic motors (2)
 Swing reduction Planetary gear
 Swing circle lubrication Grease-bathed
 Swing lock Oil disc brake
 Swing speed 8.3 rpm
 Swing torque 21369 kg·m **154,481 ft. lbs.**



UNDERCARRIAGE

Center frame H-leg
 Track frame Box-section
 Track type Sealed
 Track adjuster Hydraulic
 No. of shoes 52 each side
 No. of carrier rollers 3 each side
 No. of track rollers 9 each side



SERVICE REFILL CAPACITIES

Fuel tank 880 ltr **232.5 U.S. gal**
 Radiator 58 ltr **15.3 U.S. gal**
 Engine 40 ltr **10.6 U.S. gal**
 Final drive, each side 10 ltr **2.6 U.S. gal**
 Swing drive 2 x 13 ltr **2 x 3.4 U.S. gal**
 Hydraulic tank 360 ltr **95.0 U.S. gal**



OPERATING WEIGHT (APPROXIMATE) AND WORKING FORCES

Operating weight, including 7660 mm **25'2"** boom, 3500 mm **11'6"** arm, SAE heaped 2.7 m³ **3.53 yd³** backhoe bucket, operator, lubricant, coolant, full fuel tank, and the standard equipment.

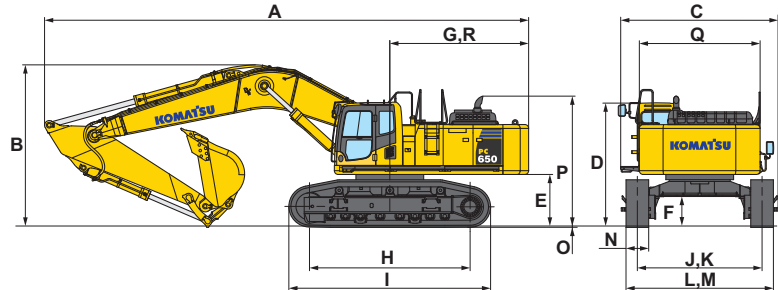
Shoes	Operating Weight	Ground Pressure
750 mm 29.5" Double grouser	64150 kg 141,427 lb	84.3 kPa 0.86 kgf/cm ² 12.3 psi
900 mm 35.5" Double grouser	65050 kg 143,411 lb	71.1 kPa 0.73 kgf/cm ² 10.3 psi

Arm Length	3500 mm 11'6"	4300 mm 14'1"	5200 mm 17'1"
Bucket digging force (SAE)	26900 kgf 59,300 lb		
Bucket digging force at power max. (SAE)	29100 kgf 64,150 lbf		
Arm crowd force (SAE)	22600 kgf 49,820 lb	19800 kgf 43,650 lb	17300 kgf 38,140 lb
Arm crowd force at power max. (SAE)	24300 kgf 53,570 lb	21300 kgf 46,960 lb	18600 kgf 41,010 lb
Bucket digging force (ISO)	30000 kgf 66,140 lb		
Bucket digging force at power max. (ISO)	32300 kgf 71,210 lb		
Arm crowd force (ISO)	23300 kgf 51,370 lb	20600 kgf 45,410 lb	17900 kgf 39,460 lb
Arm crowd force at power max. (ISO)	25100 kgf 55,340 lb	22200 kgf 48,940 lb	19300 kgf 42,550 lb



DIMENSIONS

	Arm Length	3500 mm 11'6"	4300 mm 14'1"	5200 mm 17'1"
A	Overall length	12960 mm 42'6"	12880 mm 42'3"	12585 mm 41'3"
B	Overall height (to top of boom)	4300 mm 14'1"	4655 mm 15'3"	5235 mm 17'2"
C	Overall width	4210 mm 13'10"		
D	Overall height (to top of cab)	3290 mm 10'10"		
E	Ground clearance, counterweight	1365 mm 4'6"		
F	Ground clearance (minimum)	780 mm 2'7"		
G	Tail swing radius	3950 mm 13'0"		
H	Track length on ground	4600 mm 15'1"		
I	Track length	5690 mm 18'8"		
J	Track gauge	2590 mm 8'6"		
K	Track gauge when expanded	3300 mm 10'10"		
L	Width of crawler	3490 mm 11'6"		
M	Width of crawler when expanded	4200 mm 13'10"		
N	Shoe width	900 mm 35.5"		
O	Grouser height	37 mm 1.5"		
P	Machine cab height	3435 mm 11'3"		
Q	Machine cab width	3170 mm 10'5"		
R	Distance, swing center to rear end	3825 mm 12'7"		



BACKHOE BUCKET, ARM, AND BOOM COMBINATION

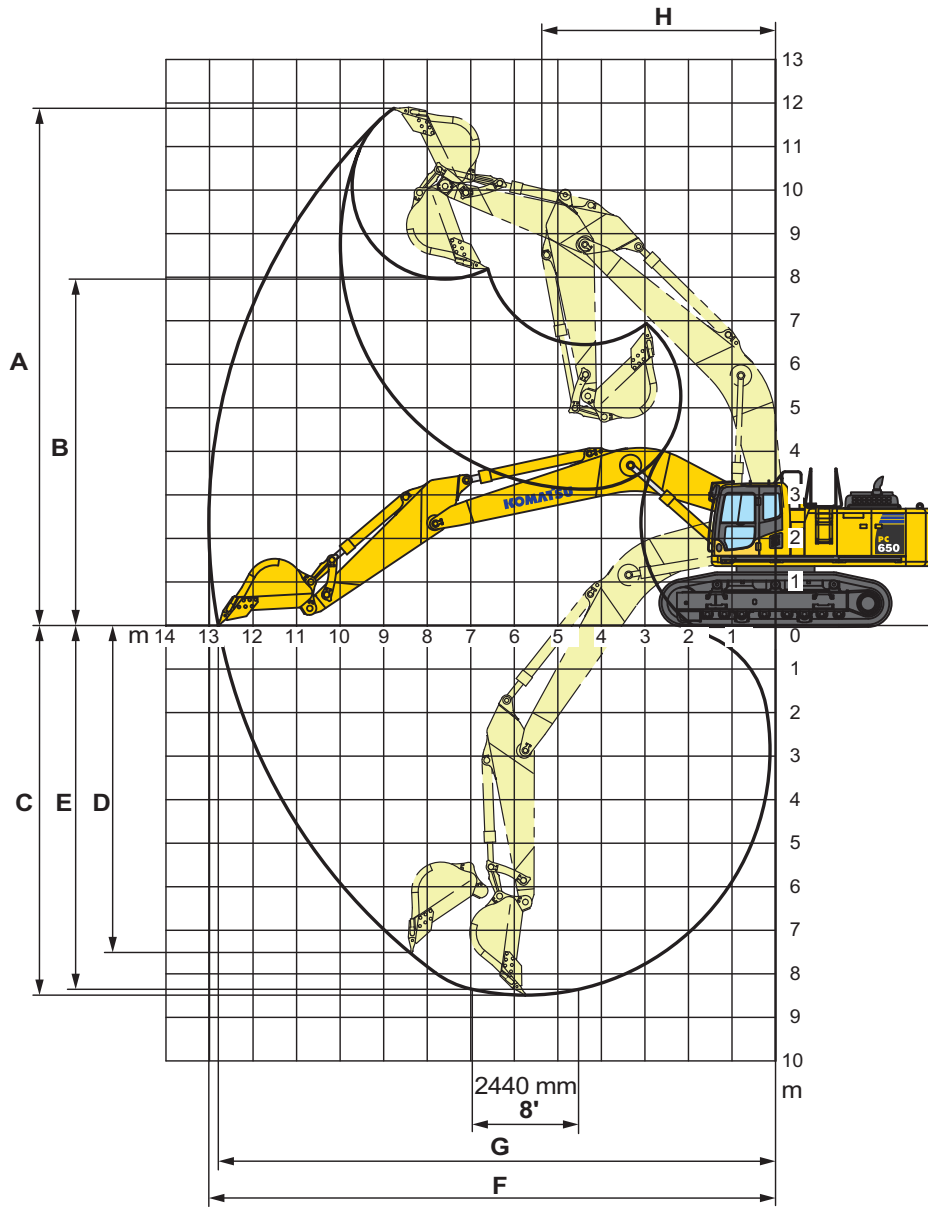
Bucket Type	Bucket		Boom Length 7660 mm 25'2"					
			Arm Length			3.5 m 11'6"	4.3 m 14'1"	5.2 m 17'1"
			Capacity	OLW	Weight			
HP	1.57 m ³ 2.05 yd³	914 mm 36"	2230 kg 4,916 lb	V	V	V		
	1.93 m ³ 2.52 yd³	1067 mm 42"	2395 kg 5,280 lb	V	V	X		
	2.29 m ³ 3.00 yd³	1219 mm 48"	2631 kg 5,800 lb	V	W	Y		
	2.67 m ³ 3.49 yd³	1372 mm 54"	2797 kg 6,167 lb	W	X	Z		
	3.04 m ³ 3.98 yd³	1524 mm 60"	3034 kg 6,688 lb	X	Y	Z		
	3.42 m ³ 4.48 yd³	1676 mm 66"	3197 kg 7,048 lb	Y	Z	Z		
	3.81 m ³ 4.98 yd³	1829 mm 72"	3433 kg 7,568 lb	Y	Z	Z		
HPX	1.57 m ³ 2.05 yd³	914 mm 36"	2532 kg 5,582 lb	V	V	W		
	1.93 m ³ 2.52 yd³	1067 mm 42"	2724 kg 6,006 lb	V	V	X		
	2.29 m ³ 3.00 yd³	1219 mm 48"	2987 kg 6,586 lb	V	W	Z		
	2.67 m ³ 3.49 yd³	1372 mm 54"	3181 kg 7,013 lb	W	Y	Z		
	3.04 m ³ 3.98 yd³	1524 mm 60"	3445 kg 7,594 lb	X	Y	Z		
	3.42 m ³ 4.48 yd³	1676 mm 66"	3635 kg 8,014 lb	Y	Z	Z		
	3.81 m ³ 4.98 yd³	1829 mm 72"	3898 kg 8,594 lb	Z	Z	Z		

V – Used with densities up to 3,500 lb/yd³, W – Used with densities up to 3,000 lb/yd³
 X – Used with densities up to 2,500 lb/yd³, Y – Used with densities up to 2,000 lb/yd³, Z – Not useable

SPECIFICATIONS



WORKING RANGE



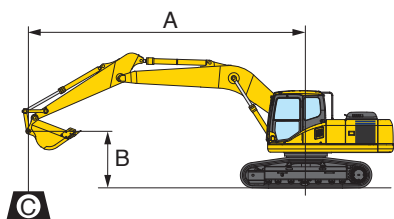
Unit: mm ft in

	Boom Length	7660 25'2"	7660 25'2"	7660 25'2"
	Arm Length	3500 11'6"	4300 14'1"	5200 17'1"
A	Max. digging height	11880 39'0"	12180 40'0"	12560 41'3"
B	Max. dumping height	7960 26'1"	8245 27'1"	8600 28'3"
C	Max. digging depth	8490 27'10"	9275 30'5"	10225 33'7"
D	Max. vertical wall digging depth	7510 24'8"	8375 27'6"	9275 30'5"
E	Max. digging depth of cut for 8' level bottom	8360 27'5"	9175 30'1"	10125 33'3"
F	Max. digging reach	13020 42'9"	13740 45'1"	14630 48'0"
G	Max. digging reach at ground level	12800 42'0"	13555 44'6"	14435 47'4"
H	Min. swing radius	5370 17'7"	5385 17'8"	5510 18'1"

LIFTING CAPACITIES



LIFTING CAPACITY



- A: Reach from swing center
- B: Bucket hook height
- C: Lifting capacity
- Cf: Rating over front
- Cs: Rating over side
- ⊗: Rating at maximum reach

Conditions:

- Arm length: 3500 mm 11'6"
- Boom length 7660 mm 25'2"
- Bucket 2.7 m³ 3.53 yd³ (SAE heaped)
- Bucket weight: 2430 kg 5,356 lb.
- Lifting mode: On

PC650LC-8		Shoe 750 mm 29.5"										Unit: kg/lb		
B	A	MAX	3.0 m 10'		4.6 m 15'		6.1 m 20'		7.6 m 25'		9.1 m 30'		⊗ MAX	
			Cf	Cs	Cf	Cs	Cf	Cs	Cf	Cs	Cf	Cs	Cf	Cs
9.1 m 30'	8.9 m 29'												*8600 *18,900	*8600 *18,900
7.6 m 25'	9.9 m 32'									*11800 *26,100	11750 25,900		*8350 *18,400	*8350 *18,400
6.1 m 20'	10.5 m 35'								*13650 *30,100	*13650 *30,100	*12350 *27,200	11500 25,400	*8450 *18,600	*8450 *18,600
4.6 m 15'	11.0 m 36'			*24900 *55,000	*24900 *55,000	*18600 *41,000	*18600 *41,000	*15200 *33,600	15200 33,500	*13200 *29,100	11150 24,500		*8750 *19,300	7900 17,500
3.0 m 10'	11.2 m 37'					*21300 *47,000	20150 44,400	*16900 *37,200	14400 31,700	*14150 *31,200	10700 23,600		*9300 *20,500	7500 16,500
1.5 m 5'	11.2 m 37'			*16900 *37,300	*16900 *37,300	*23700 *52,300	19250 42,400	*18250 *40,200	13700 30,200	14850 32,800	10300 22,700		*10150 *22,400	7350 16,200
0 m 0'	10.9 m 36'			*19800 *43,700	*19800 *43,700	*24700 *54,500	18550 40,900	*18950 *41,800	13100 28,900	14550 32,100	10000 22,000		10950 24,100	7500 16,500
-1.5 m -5'	10.5 m 34'	*14800 *32,700	*14800 *32,700	*26600 *58,600	*26600 *58,600	*24500 *54,100	18250 40,300	18850 41,600	12750 28,100	14350 31,700	9800 21,700		11650 25,700	7950 17,600
-3.0 m -10'	9.8 m 32'	*23250 *51,300	*23250 *51,300	*30100 *66,400	29700 65,500	*23200 *51,200	18300 40,400	*18150 *40,000	12800 28,200	14400 31,700	9850 21,700		*13000 *28,600	8950 19,700
-4.6 m -15'	8.7 m 29'	*33350 *73,600	*33350 *73,600	*26200 *57,800	*26200 *57,800	*20550 *45,300	18650 41,100	*16050 *35,400	13200 29,100				*13000 *28,700	10800 23,800
-6.1 m -20'	7.2 m 24'			*20050 *44,200	*20050 *44,200	*15350 *33,900	*15350 *33,900						*12350 *27,300	*12350 *27,300

PC650LC-8		Shoe 900 mm 35.5"										Unit: kg/lb		
B	A	MAX	3.0 m 10'		4.6 m 15'		6.1 m 20'		7.6 m 25'		9.1 m 30'		⊗ MAX	
			Cf	Cs	Cf	Cs	Cf	Cs	Cf	Cs	Cf	Cs	Cf	Cs
9.1 m 30'	8.9 m 29'												*8600 *18,900	*8600 *18,900
7.6 m 25'	9.9 m 32'									*11800 *26,100	*11800 *26,100		*8350 *18,400	*8350 *18,400
6.1 m 20'	10.5 m 35'							*13650 *30,100	*13650 *30,100	*12350 *27,200	11650 25,700		*8450 *18,600	*8450 *18,600
4.6 m 15'	11.0 m 36'			*24900 *55,000	*24900 *55,000	*18600 *41,000	*18600 *41,000	*15200 *33,600	*15200 *33,600	*13200 *29,100	11300 24,900		*8750 *19,300	8050 17,800
3.0 m 10'	11.2 m 37'					*21300 *47,000	20400 45,000	*16900 *37,200	14600 32,200	*14150 *31,200	10850 23,900		*9300 *20,500	7600 16,800
1.5 m 5'	11.2 m 37'			*16900 *37,300	*16900 *37,300	*23700 *52,300	19500 43,000	*18250 *40,200	13900 30,700	*14950 *33,000	10450 23,000		*10150 *22,400	7450 16,500
0 m 0'	10.9 m 36'			*19800 *43,700	*19800 *43,700	*24700 *54,500	18800 41,500	*18950 *41,800	13300 29,300	14750 32,600	10150 22,400		11100 24,500	7600 16,800
-1.5 m -5'	10.5 m 34'	*14800 *32,700	*14800 *32,700	*26600 *58,600	*26600 *58,600	*24500 *54,100	18550 40,900	*18900 *41,700	12900 28,500	14600 32,200	10000 22,000		11850 26,100	8100 17,900
-3.0 m -10'	9.8 m 32'	*23250 *51,300	*23250 *51,300	*30100 *66,400	30100 66,400	*23200 *51,200	18600 41,000	*18150 *40,000	13000 28,700	*14450 *31,900	10000 22,000		*13000 *28,600	9100 20,000
-4.6 m -15'	8.7 m 29'	*33350 *73,600	*33350 *73,600	*26200 *57,800	*26200 *57,800	*20550 *45,300	18900 41,700	*16050 *35,400	13400 29,500				*13000 *28,700	10950 24,200
-6.1 m -20'	7.2 m 24'			*20050 *44,200	*20050 *44,200	*15350 *33,900	*15350 *33,900						*12350 *27,300	*12350 *27,300

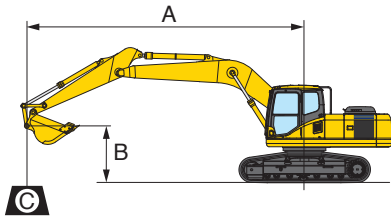
*Load is limited by hydraulic capacity rather than tipping. Ratings are based on ISO standard No. 10567. Rated loads do not exceed 87% of hydraulic lift capacity or 75% of tipping load.

PC650LC-8 HYDRAULIC EXCAVATOR

LIFTING CAPACITIES



LIFTING CAPACITY



- A: Reach from swing center
- B: Bucket hook height
- C: Lifting capacity
- Cf: Rating over front
- Cs: Rating over side
- ⊗: Rating at maximum reach

Conditions:

- Arm length: 4300 mm 14'1"
- Boom length 7660 mm 25'2"
- Bucket 2.3 m³ 3.0 yd³ (SAE heaped)
- Bucket weight: 2263 kg 4,988 lb.
- Lifting mode: On

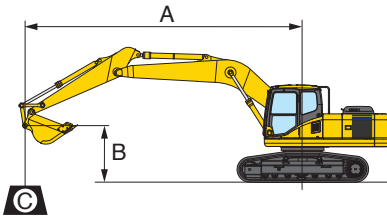
PC650LC-8		Shoe 750 mm 29.5"												Unit: kg/lb	
B	A	MAX	3.0 m 10'		4.6 m 15'		6.1 m 20'		7.6 m 25'		9.1 m 30'		⊗ MAX		
			Cf	Cs	Cf	Cs	Cf	Cs	Cf	Cs	Cf	Cs	Cf	Cs	
9.1 m 30'	9.8 m 32'										*9000 *19,800	*9000 *19,800	*6600 *14,500	*6600 *14,500	
7.6 m 25'	10.7 m 35'										*10600 *23,300	*10600 *23,300	*6400 *14,100	*6400 *14,100	
6.1 m 20'	11.3 m 37'										*11200 *24,700	*11200 *24,700	*6450 *14,200	*6450 *14,200	
4.6 m 15'	11.7 m 38'							*13850 *30,600	*13850 *30,600	*12150 *26,800	11250 24,800	*6650 *14,600	*6650 *14,600		
3.0 m 10'	11.9 m 39'			*27750 *61,200	*27750 *61,200	*19750 *43,500	*19750 *43,500	*15650 *34,500	14600 32,100	*13250 *29,200	10750 23,700	*7000 *15,500	6600 14,500		
1.5 m 5'	11.9 m 39'			*23700 *52,200	*23700 *52,200	*22350 *49,300	19450 42,900	*17250 *38,100	13750 30,400	*14250 *31,400	10300 22,700	*7600 *16,800	6450 14,200		
0 m 0'	11.7 m 38'			*21700 *47,800	*21700 *47,800	*23950 *52,800	18500 40,800	*18400 *40,600	13150 29,000	14450 31,900	9900 21,800	*8500 *18,700	6550 14,400		
-1.5 m -5'	11.3 m 37'	*13850 *30,600	*13850 *30,600	*25450 *56,100	*25450 *56,100	*24400 *53,800	18050 39,800	*18750 *41,400	12650 27,900	14200 31,300	9650 21,200	*9800 *21,600	6900 15,200		
-3.0 m -10'	10.6 m 35'	*20200 *44,500	*20200 *44,500	*31650 *69,700	29000 64,000	*23700 *52,300	17900 39,500	*18400 *40,500	12500 27,600	14100 31,100	9550 21,000	11200 24,700	7600 16,800		
-4.6 m -15'	9.7 m 32'	*27900 *61,500	*27900 *61,500	*28550 *62,900	*28550 *62,900	*21800 *48,100	18100 39,900	*17100 *37,700	12750 28,100	*13300 *29,400	9650 21,300	*12050 *26,500	8900 19,700		
-6.1 m -20'	8.3 m 27'	*31250 *69,000	*31250 *69,000	*23550 *52,000	*23550 *52,000	*18250 *40,200	*18250 *40,200	*13950 *30,700	13150 28,900			*11900 *26,200	11500 25,400		

PC650LC-8		Shoe 900 mm 35.5"												Unit: kg/lb	
B	A	MAX	3.0 m 10'		4.6 m 15'		6.1 m 20'		7.6 m 25'		9.1 m 30'		⊗ MAX		
			Cf	Cs	Cf	Cs	Cf	Cs	Cf	Cs	Cf	Cs	Cf	Cs	
9.1 m 30'	9.8 m 32'										*9000 *19,800	*9000 *19,800	*6600 *14,500	*6600 *14,500	
7.6 m 25'	10.7 m 35'										*10600 *23,300	*10600 *23,300	*6400 *14,100	*6400 *14,100	
6.1 m 20'	11.3 m 37'										*11200 *24,700	*11200 *24,700	*6450 *14,200	*6450 *14,200	
4.6 m 15'	11.7 m 38'							*13850 *30,600	*13850 *30,600	*12150 *26,800	11400 25,200	*6650 *14,600	*6650 *14,600		
3.0 m 10'	11.9 m 39'			*27750 *61,200	*27750 *61,200	*19750 *43,500	*19750 *43,500	*15650 *34,500	14800 32,600	*13250 *29,200	10900 24,100	*7000 *15,500	6700 14,800		
1.5 m 5'	11.9 m 39'			*23700 *52,200	*23700 *52,200	*22350 *49,300	19750 43,500	*17250 *38,100	13950 30,800	*14250 *31,400	10450 23,000	*7600 *16,800	6550 14,500		
0 m 0'	11.7 m 38'			*21700 *47,800	*21700 *47,800	*23950 *52,800	18800 41,400	*18400 *40,600	13350 29,400	14700 32,400	10050 22,100	*8500 *18,700	6650 14,700		
-1.5 m -5'	11.3 m 37'	*13850 *30,600	*13850 *30,600	*25450 *56,100	*25450 *56,100	*24400 *53,800	18300 40,400	*18750 *41,400	12850 28,400	14400 31,800	9800 21,600	*9800 *21,600	7000 15,500		
-3.0 m -10'	10.6 m 35'	*20200 *44,500	*20200 *44,500	*31650 *69,700	29450 64,900	*23700 *52,300	18200 40,100	*18400 *40,500	12700 28,000	14300 31,600	9700 21,400	11400 25,200	7750 17,100		
-4.6 m -15'	9.7 m 32'	*27900 *61,500	*27900 *61,500	*28550 *62,900	*28550 *62,900	*21800 *48,100	18350 40,500	*17100 *37,700	12950 28,500	*13300 *29,400	9800 21,700	*12050 *26,500	9050 20,000		
-6.1 m -20'	8.3 m 27'	*31250 *69,000	*31250 *69,000	*23550 *52,000	*23550 *52,000	*18250 *40,200	*18250 *40,200	*13950 *30,700	13350 29,400			*11900 *26,200	11700 25,800		

*Load is limited by hydraulic capacity rather than tipping. Ratings are based on ISO standard No. 10567. Rated loads do not exceed 87% of hydraulic lift capacity or 75% of tipping load.



LIFTING CAPACITY



- A: Reach from swing center
- B: Bucket hook height
- C: Lifting capacity
- Cf: Rating over front
- Cs: Rating over side
- ⊗: Rating at maximum reach

Conditions:

- Arm length: 5200 mm 17'1"
- Boom length 7660 mm 25'2"
- Bucket 2.0 m³ 2.62 yd³ (SAE heaped)
- Bucket weight: 2133 kg 4,700 lb.
- Lifting mode: On

PC650LC-8		Shoe 750 mm 29.5"										Unit: kg/lb	
B	A MAX	3.0 m 10'		4.6 m 15'		6.1 m 20'		7.6 m 25'		9.1 m 30'		⊗ MAX	
		Cf	Cs	Cf	Cs	Cf	Cs	Cf	Cs	Cf	Cs	Cf	Cs
9.1 m 30'	10.9 m 36'											*4900 *10,800	*4900 *10,800
7.6 m 25'	11.7 m 38'											*4750 *10,500	*4750 *10,500
6.1 m 20'	12.3 m 40'											*4800 *10,600	*4800 *10,600
4.6 m 15'	12.6 m 41'									*11000 *24,300	*11000 *24,300	*4900 *10,800	*4900 *10,800
3.0 m 10'	12.8 m 42'			*23850 *52,600	*23850 *52,600	*17550 *38,700	*17550 *38,700	*14250 *31,400	*14250 *31,400	*12200 *26,900	11000 24,300	*5150 *11,400	*5150 *11,400
1.5 m 5'	12.8 m 42'			*29400 *64,800	*29400 *64,800	*20650 *45,600	20100 44,300	*16100 *35,500	14100 31,100	*13350 *29,500	10450 23,100	*5550 *12,300	*5550 *12,300
0 m 0'	12.6 m 41'			*25000 *55,100	*25000 *55,100	*22900 *50,500	18850 41,600	*17600 *38,800	13350 29,400	*14350 *31,600	9950 22,000	*6150 *13,600	5700 12,500
-1.5 m -5'	12.2 m 40'	*13000 *28,700	*13000 *28,700	*25150 *55,500	*25150 *55,500	*24050 *53,000	18100 40,000	*18500 *40,800	12800 28,300	14150 31,300	9600 21,200	*7000 *15,500	5950 13,100
-3.0 m -10'	11.6 m 38'	*17700 *39,000	*17700 *39,000	*29300 *64,700	28750 63,400	*24100 *53,100	17800 39,200	*18550 *40,900	12450 27,400	13950 30,800	9400 20,800	*8300 *18,300	6450 14,200
-4.6 m -15'	10.7 m 35'	*23500 *51,800	*23500 *51,800	*30750 *67,800	28900 63,700	*23000 *50,700	17750 39,200	*17900 *39,500	12500 27,500	13950 30,700	9400 20,700	*10400 *22,900	7350 16,200
-6.1 m -20'	9.6 m 31'	*31000 *68,400	*31000 *68,400	*27050 *59,600	*27050 *59,600	*20550 *45,300	18050 39,800	*15950 *35,200	12700 28,000	*12200 *26,900	9600 21,200	*11150 *24,500	9000 19,900

PC650LC-8		Shoe 900 mm 35.5"										Unit: kg/lb	
B	A MAX	3.0 m 10'		4.6 m 15'		6.1 m 20'		7.6 m 25'		9.1 m 30'		⊗ MAX	
		Cf	Cs	Cf	Cs	Cf	Cs	Cf	Cs	Cf	Cs	Cf	Cs
9.1 m 30'	10.9 m 36'											*4900 *10,800	*4900 *10,800
7.6 m 25'	11.7 m 38'											*4750 *10,500	*4750 *10,500
6.1 m 20'	12.3 m 40'											*4800 *10,600	*4800 *10,600
4.6 m 15'	12.6 m 41'									*11000 *24,300	*11000 *24,300	*4900 *10,800	*4900 *10,800
3.0 m 10'	12.8 m 42'			*23850 *52,600	*23850 *52,600	*17550 *38,700	*17550 *38,700	*14250 *31,400	*14250 *31,400	*12200 *26,900	11150 24,600	*5150 *11,400	*5150 *11,400
1.5 m 5'	12.8 m 42'			*29400 *64,800	*29400 *64,800	*20650 *45,600	20350 44,900	*16100 *35,500	14300 31,500	*13350 *29,500	10600 23,400	*5550 *12,300	*5550 *12,300
0 m 0'	12.6 m 41'			*25000 *55,100	*25000 *55,100	*22900 *50,500	19150 42,200	*17600 *38,800	13550 29,900	*14350 *31,600	10150 22,300	*6150 *13,600	5800 12,800
-1.5 m -5'	12.2 m 40'	*13000 *28,700	*13000 *28,700	*25150 *55,500	*25150 *55,500	*24050 *53,000	18400 40,600	*18500 *40,800	13000 28,700	14400 31,800	9750 21,600	*7000 *15,500	6050 13,300
-3.0 m -10'	11.6 m 38'	*17700 *39,000	*17700 *39,000	*29300 *64,700	29150 64,300	*24100 *53,100	18050 39,800	*18550 *40,900	12650 27,900	14200 31,300	9600 21,100	*8300 *18,300	6500 14,500
-4.6 m -15'	10.7 m 35'	*23500 *51,800	*23500 *51,800	*30750 *67,800	29350 64,700	*23000 *50,700	18050 39,800	*17900 *39,500	12700 28,000	14150 31,200	9550 21,100	*10400 *22,900	7500 16,500
-6.1 m -20'	9.6 m 31'	*31000 *68,400	*31000 *68,400	*27050 *59,600	*27050 *59,600	*20550 *45,300	18300 40,400	*15950 *35,200	12900 28,400	*12200 *26,900	9800 21,600	*11150 *24,500	9150 20,200

*Load is limited by hydraulic capacity rather than tipping. Ratings are based on ISO standard No. 10567. Rated loads do not exceed 87% of hydraulic lift capacity or 75% of tipping load.



STANDARD EQUIPMENT

ENGINE AND RELATED ITEMS:

- Air cleaner, double element, dry type
- Engine, Komatsu SAA6D140E-5
- Fuel pre-filter (10 micron) with water separator
- Fuel primary filter (2 micron)
- Variable speed cooling fan, hydraulic drive, reversible

ELECTRICAL SYSTEM:

- Alternator, 90A, 24V
- Batteries, 170Ah, 2 x 12V
- Starting motor, 11kW
- Work lights 2 (boom and RH)
- Auto decelerator

UNDERCARRIAGE:

- 900 mm **35.5"** triple grouser shoes
- 9 track/3 carrier rollers (each side)
- Hydraulic track adjusters (each side)
- Variable track gauge
- Sealed track

GUARDS AND COVERS:

- Radiator and oil cooler with net
- Pump/engine room partition
- Track frame undercover (center)
- Travel motor guards
- Strengthened revolving frame underguard

OPERATOR ENVIRONMENT:

- Damper mount, all-weather, sound-suppressed cab with tinted safety glass windows, lockable door, intermittent window wiper and washer, floormat, cigarette lighter and ashtray, automatic air conditioner, AM-FM radio, seat belt (retractable) 78 mm **3"**
- Multi-function color monitor, fuel control dial, service meter, gauges (coolant temperature, hydraulic oil temperature and fuel level), caution lights (electric charge, engine oil pressure, and air cleaner clogging), indicator lights (engine preheating and swing lock), level check lights (coolant and engine oil level), self-diagnostic system with trouble data memory
- High-back suspension seat, heated
- Cab with pull-up type front window
- Rearview mirrors (RH & LH)
- Rear-view camera (1)
- Operator protective guard (OPG), Level 1

HYDRAULIC CONTROLS:

- Fully hydraulic, with Open-Center Load-Sensing (OLSS) and engine speed sensing (pump and engine mutual control system)
- One gear pump for control circuit
- Two axial piston motors for swing with single-stage relief valve
- One axial piston motor per track for travel with counterbalance valve
- Two variable capacity piston main pumps
- Control valves, 5+4 spools (boom, arm, bucket, swing, and travel)
- Control levers, wrist control levers for arm, boom, bucket, and swing with PPC system
- Control levers and pedals for steering and travel with PPC system
- In-line high pressure filters
- 3-mode system (Power, Economy, Lifting)
- Two-mode setting for boom
- Power maximizing system
- Boom and arm holding valves

DRIVE AND BRAKE SYSTEM:

- Brakes, hydraulic lock travel brakes, oil disc parking
- Hydrostatic two travel speed system with planetary triple reduction final drive

OTHER STANDARD EQUIPMENT:

- Automatic swing holding brake
- Catwalk and handrails
- Corrosion resister
- Counterweight, 13500 kg **29,762 lb**
- Grease gun, electric pump type
- Horn, electric
- Interconnected horn and warning light
- KOMTRAX
- Large handrails
- Marks and plates, English
- One-touch engine oil drainage
- Paint, Komatsu standard
- PM tune-up service connector
- Power supply, 12V
- Track frame undercover
- Travel alarm
- Slip-resistant plates



OPTIONAL EQUIPMENT

- | | | |
|---|---|--|
| <ul style="list-style-type: none"> ● Arms: <ul style="list-style-type: none"> —3500 mm 11'6" arm assembly —4300 mm 14'1" arm assembly —5200 mm 17'1" arm assembly ● Auxiliary gear pump ● Additional rear view camera (1) RH side | <ul style="list-style-type: none"> ● Boom: <ul style="list-style-type: none"> —7660 mm 25'2" boom assembly ● Cab top guard ● Counterweight removal device ● Full length track roller guard ● OPG top guard, Level 2 ● OPG front guard, Level 2 | <ul style="list-style-type: none"> ● Rain visor ● Service valve (deletes holding valves) ● Shoes: <ul style="list-style-type: none"> —750 mm 29.5" triple grouser ● Sun visor |
|---|---|--|

AESS814-01

©2010 Komatsu Printed in USA

D09(1.5M)OSP

09/10 (EV-1)

KOMATSU®