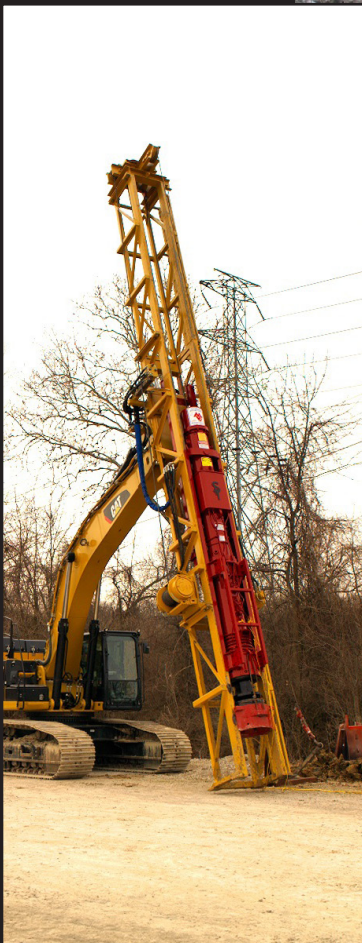




**New MKT Excavator Mounted Lead System (ELS)**



# New MKT Excavator Mounted Lead System (ELS) 26-45 VT

## MKT Excavator Mounted Lead System Overview:

- 20' BASE section for low-headroom applications
- Up to 45' overall length of 8" x 26" box leads
- 17,000 lb line pull TOOL winch, 34,000 pound line pull w/ cable 2-parted
- 12,000 lb line pull SERVICE winch for various hoisting requirements (piling, auger flighting, etc.)
- 8' vertical travel assembly
- 10° side-to-side adjustment for lead/pile plumbing
- Fore/aft capability (engineering review required based on tool & pile weight)
- Head sheave assembly & boom adapter
- Powered by excavator's hydraulics
- Modular system designed to fit specific customer needs
- In cab, operator friendly joystick controls for system functions
- Easily attached

## MKT ELS 26-45 VT System Excavator Requirements:

- Excavator weight (includes stick & bucket cylinder...weight does not include bucket) = 110,000 lbs
- Auxiliary Circuit hydraulic flow required = 100 to 150 gpm
- Maximum hydraulic pressure required = Up to 5075 psi (depending on tool being used in ELS system)
- 24 volt negative ground electrical system

## MKT ELS Components Weights:

- 20' base section (12,000 lbs) - includes boom adapter, vertical travel system, hydraulic control valve, tool and service winches.
- Complete ELS 26-45 VT system with 45' overall length of 8" x 26" box leads and head sheave assembly (17,000 lbs)

## Tools Available for use in MKT ELS System:

- MKT HA-18 hydraulic auger system without flighting (2,250 lbs)
  - MKT HVA-40 variable torque hydraulic auger system without flighting (3,500 lbs)
  - MKT V-5E hydraulic vibratory hammer (does not include side-clamp assembly) (6,200 lbs)
  - MKT V-22 hydraulic vibratory hammer (8,750 lbs)
  - SPI D-19 single-acting diesel hammer with cap and striker plate (11,365 lbs)
  - SPI D-30 single-acting diesel hammer with cap and striker plate (18,005 lbs)
- \*\*When using the MKT HVA-40, MKT V-22 and the SPI D-30 pile hammer tools, the main winch line must be 2-parted.

*Distributed by:*



**MKT Manufacturing, Inc.**

1198 Pershall Rd • St. Louis, MO 63137  
phone (314) 388.2254 • fax (314) 388.1218  
www.MKTPILEMAN.com