

# SY75C

## Excavator



### KEY FEATURES

- Minimum swing radius for tight job sites
- Auto-deceleration system maximizes efficiency while reducing fuel consumption
- New design offers increased speed while maintaining smooth hydraulic control
- Standard features include two-way auxiliary hydraulics, back fill blade, and a pattern control change valve to increase productivity

### SPECIFICATIONS

**Power**

54.3 hp / 40.5 kW

**Operating Weight**

16,050 lb / 7280 kg

**Dig Depth**

13'2" / 4021 mm

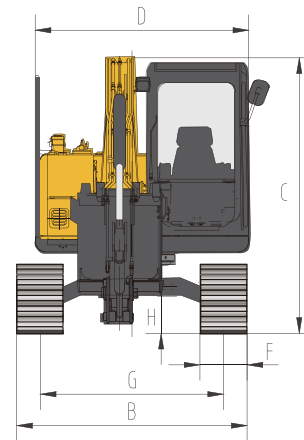
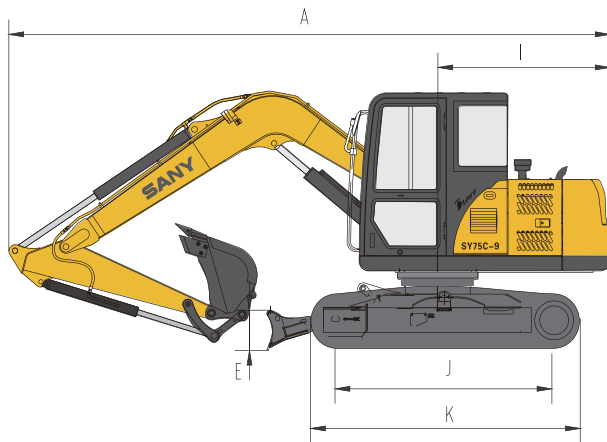
**Bucket Breakout**

12,589 lbf / 56 kN



# SY75C Dimensions & Specifications

## Overall Dimensions



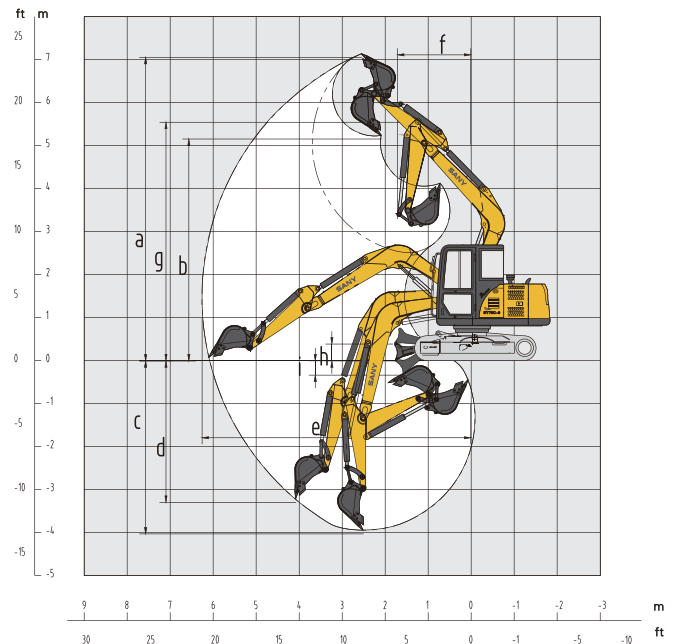
### Overall Dimensions

	U.S. (ft - in)	Metric (mm)
A Transport Length	20' - 0"	6095
B Transport Width	7' - 3.4"	2220
C Transport Height	8' - 6.8"	2610
D Upper Width	6' - 8.3"	2040
E Blade Plate Height	1' - 3.9"	403
F Std Track Shoe Width	1' - 5.7"	450
G Track Gauge	5' - 8.9"	1750
H Minimum Ground Clearance	1' - 3"	382
I Tail Swing Radius	5' - 10.9"	1800
J Length Center Idler to Center Sprocket	7' - 2.4"	2195
K Track Length	9' - 2.9"	2817
Boom Length	12' - 2.5"	3720
Std Arm Length	6' - 8.7"	2050

### Machine Parameters

	U.S.	Metric
Weight	16,050 lb	7280 kg
Rated Power	54.3 hp / 2000 rpm	40.5 kW / 2000 rpm
Engine Max Torque	154.9 lbf / 1500 rpm	210 Nm / 1500 rpm
Swing Speed	10.4 rpm	10.4 rpm
Travel Speed	3.5 / 1.9 mph	5.6 / 3.0 km/h
Draw Bar Pull (Tractive Effort)	12,770 lbf	56.8 kN
Max Arm Digging Force	8,543 lbf	38 kN
Max Bucket Digging Force	12,589 lbf	56 kN
Number of Upper Rollers	1	1
Number of Lower Rollers	5	5
Fuel Tank Capacity	39.6 gal	150 liters
Hydraulic Tank Capacity	31.7 gal	120 liters
Cooling System Capacity	3.2 gal	12 liters
Engine Oil Capacity	2.6 gal	10 liters
Ground Pressure (450 mm Shoes)	4.8 psi	33 kPa

## Operating Range



### Operating Range

	U.S. (ft - in)	Metric (mm)
a Max Digging Height	23' - 1.9"	7058
b Max Dumping Height	18' - 2.4"	5548
c Max Digging Depth	13' - 2.3"	4021
d Max Vertical Wall Digging Depth	10' - 9.6"	3291
e Max Digging Reach	20' - 5.6"	6238
f Min Swing Radius	5' - 7.7"	1720
g Max Height at Minimum Swing Radius	18' - 2.4"	5548