

# MODEL SG-75W

## Wheeled Stump Grinder

The Model SG-75W is a rubber-tire stump grinder designed for stump grinding professionals seeking **unmatched cutterwheel power**, a powerful drive system, user-friendly controls, and all-around versatility in one machine. To see how an SG-75W can change your stump grinding operation, give a Bandit dealer a call today.



### SWING-OUT CONSOLE

The SG-75W is standard with a swing-out operators' console. This console features high quality electronic joysticks controlling all cutterwheel and machine drive functions. The console will swing into the side of the machine for optimal storage during transport.



### OPTIONAL RADIO REMOTE CONTROL

A wireless radio remote control is available as an option. Like the swing out, the radio remote will control all cutterwheel and machine drive functions. When the remote is ordered, the swing-out console is still included with the machine.



### DURABLE DRIVE SYSTEM

A durable drive system easily propels the unit at a maximum speed of 2.70 MPH. Wide profile flotation tires allow for a stable platform to travel over softer terrain conditions, making the SG-75W the ultimate backyard stump grinder. Dual drive tires are standard and can be removed allowing the unit to fit through a 36" yard gate.



# Bandit

EMPLOYEE-OWNED

6750 Millbrook Rd. • Remus, MI 49340 • **1-800-952-0178**

FIND US ONLINE     [WWW.BANDITCHIPPERS.COM](http://WWW.BANDITCHIPPERS.COM)

Hand-Fed Chippers • Stump Grinders • Whole Tree Chippers  
Horizontal Grinders • Slow-Speed Shredders

**SPECIFICATIONS**

**MEASUREMENTS**

Length:	142"	360.7 cm
Width:	35.5" with dual wheels removed (51.5" with duals)	90.2 - 130.9 cm
Height:	71"	180.3 cm
Weight:	4,320 pounds (approx.)	1,959.5 kg
Engines:	Kohler 74HP Diesel	
Fuel Tank:	12.5 gallon	47.3 L
Hydraulic Tank:	10 gallon	37.9 L

**CUTTER WHEEL SYSTEM**

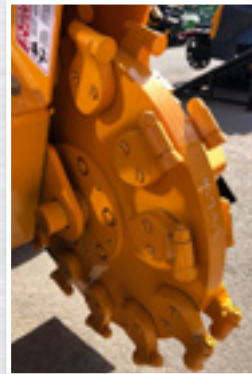
Dimensions:	New Revolution Wheel = (27" diameter x 1 1/4" thick) or Green Wheel = (27" diameter x 1" thick)	
Engagement:	Hydraulic Motor	
Teeth:	New Revolution Wheel: (44) Green Wheel: (32)	
Cutter Swing:	72"	182.9 cm
Cutter Depth:	24"	61 cm
Cutter Height:	30"	76.2 cm

**UNMATCHED GRINDING POWER**

The cutterwheel on the SG-75W is driven by a gearbox drive system and is configured to power through the toughest stumps with unrivaled force. A Kohler 74 horsepower diesel engine with 221 ft / lbs. of torque, further enhances this machine's ability to grind efficiently with an abundant amount of power.

**CHOICE OF CUTTERWHEEL**

Two cutterwheel options are available so users can choose the set-up that best meets their needs based on soil conditions and other factors. A 27" Bandit wheel with Greenteeth or a New Revolution wheel with hex teeth can be ordered.



**Greenteeth Wheel**



**Revolution Wheel**

**COMMITTED TO QUALITY & PRODUCTIVITY**

Since 1983, Bandit has manufactured equipment for a multitude of wood waste processing markets. The vision since the beginning, is to build quality, highly productive, easy to maintain equipment providing years of dependable service.

The commitment for quality, innovation and dedication is instilled in every employee and is one of the main reasons why Bandit became an Employee-Owned Company (ESOP) in 2018. These core values ensure each Bandit machine will leave the factory ready to exceed your expectations.



**MODEL SG-75W FEATURES**

- Kohler 74 horsepower diesel engine – Tier 4 Final
- Standard swing out operator's console
- Standard hydraulic grading blade
- Optional wireless radio remote control
- Wide profile flotation tires
- Hydraulic motor for cutterwheel engagement
- Gearbox for cutterwheel drive

SG-75W\_2025-10

**Bandit Offers a Complete Line of Tree Care Equipment:**  
Hand-Fed Chippers • Stump Grinders • Whole Tree Chippers  
Horizontal Grinders • Slow-Speed Shredders