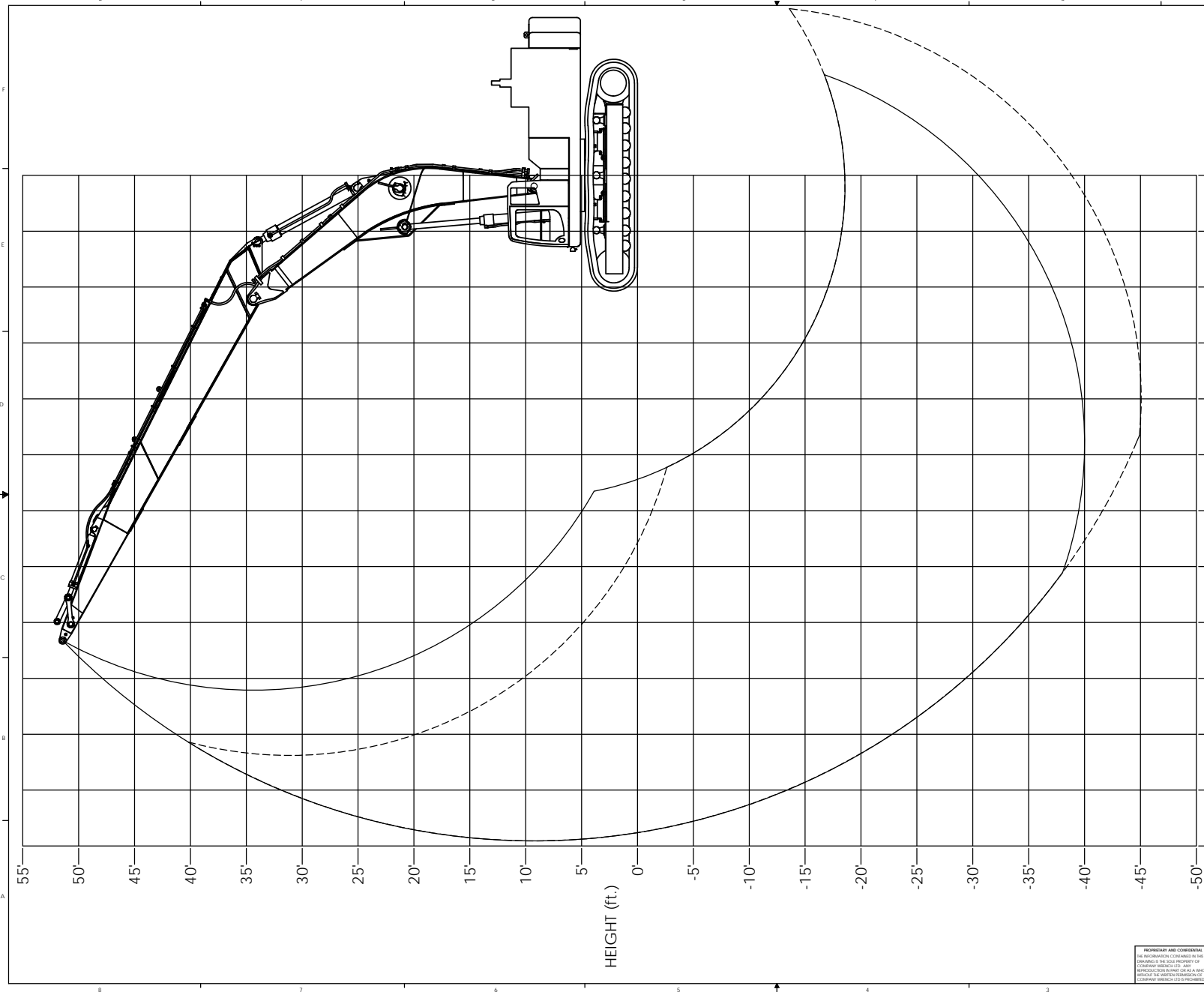


REVISIONS				
ZONE	REV.	DESCRIPTION	DATE	APPROVED



REACH (ft.)

HEIGHT (ft.)

CONFIGURATION:
 27'-1" SK850LC-9 BOOM (WITH DUAL PIN POSITIONS FOR BOOM CYLINDERS)
 35'-0" STICK WITH PC400 TIP

--- BOOM HOIST CYLINDERS ON UPPER PIVOT
 — BOOM HOIST CYLINDERS ON LOWER PIVOT

MATERIAL:		



4805 SCOOPY LANE NW
 CARROLL, OHIO 43112
 740-654-5304

The Cutting Edge of Customer Service

PROFESSIONAL AND CONFIDENTIAL
 THE INFORMATION CONTAINED HEREIN
 IS THE SOLE PROPERTY OF
 COMPANY WRENCH. ANY REPRODUCTION
 WITHOUT THE WRITTEN PERMISSION OF
 COMPANY WRENCH IS PROHIBITED.

UNLESS OTHERWISE SPECIFIED
 DIMENSIONS TO DIMENSIONS ARE
 AS FOLLOWS:
 DECIMAL: .00015"
 FRACTIONAL: 1/16"
 ANGLE: .1°
 WEIGHT: #

TITLE: SK850LC-9 DUAL PIN BOOM RANGE - 35' ARM, PC400 TIP
 SCALE: 1:50
 SHEET 1 OF 1

SIZE: D
 DWG./PART NO.

OM14222-2

