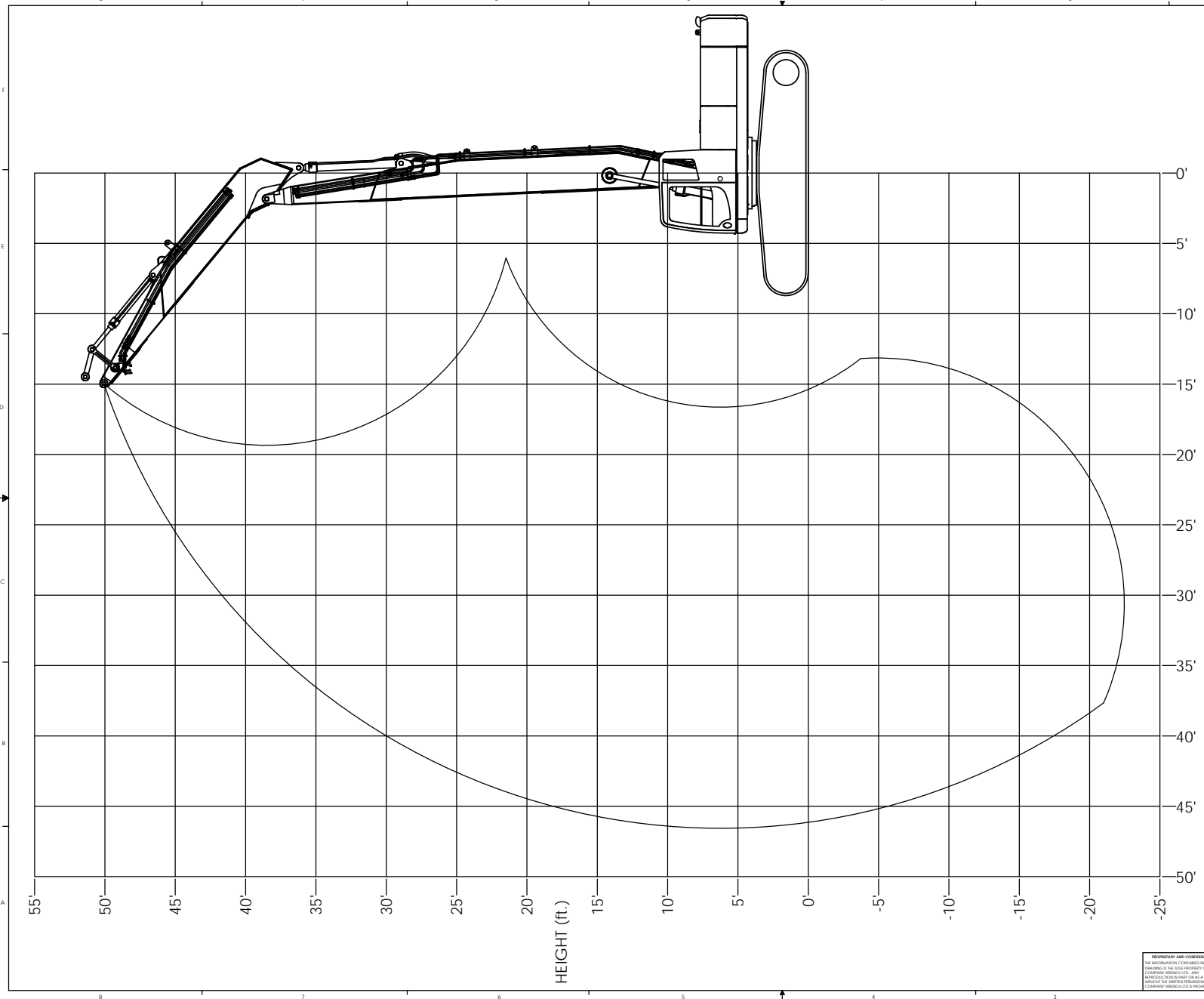


REVISIONS				
ZONE	REV.	DESCRIPTION	DATE	APPROVED



MATERIAL:		


 4805 SCOOPY LANE NW  
 CARROLL, OHIO 43112  
 740-654-5304  
*The Cutting Edge of Customer Service*

PROPRIETARY AND CONFIDENTIAL  
 THE INFORMATION CONTAINED HEREIN IS THE PROPERTY OF COMPANY WRENCH. ANY REPRODUCTION OR TRANSMISSION OF THIS INFORMATION WITHOUT THE WRITTEN PERMISSION OF COMPANY WRENCH IS PROHIBITED.

UNLESS OTHERWISE SPECIFIED DIMENSIONS TO DIMENSIONS ARE AS FOLLOWS:  
 DECIMAL: .0001"  
 FRACTIONAL: 1/16"  
 ANGLE: .1°

TITLE: SK260LC-9 - 47' LONG REACH RANGE  
 SCALE: 1:40  
 SHEET 1 OF 1

SIZE: **D**  
 DWG./PART NO.: OM16042-1

**Lifting Capacities**  
P/N: 0M16042-2



SK260LC-9  
47 Foot  
Long Reach Excavator

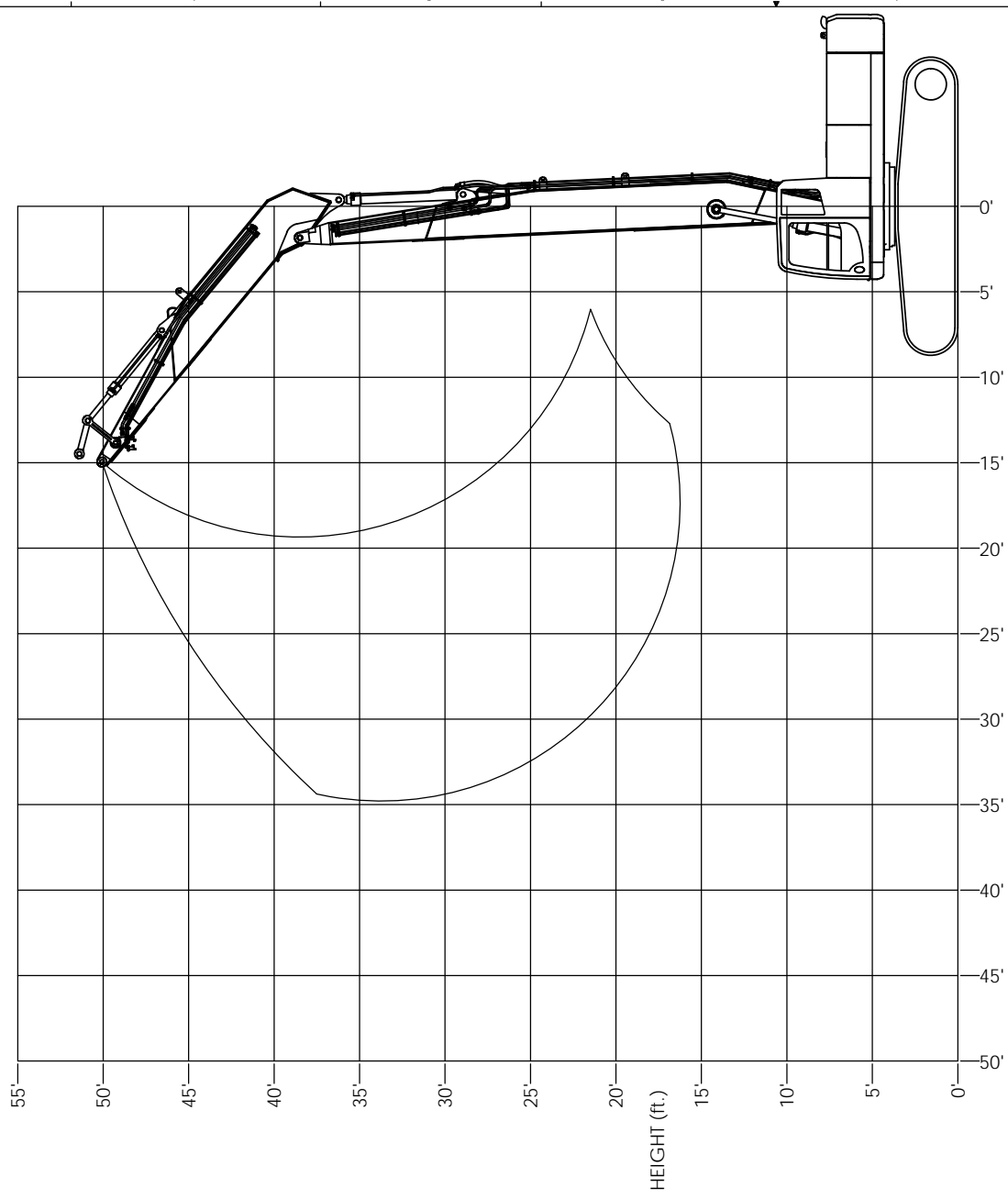
Lift capacities calculated at attachment pivot point on stick (lbs).  
No attachment on stick. Attachment weight must be subtracted.

REACH																		HEIGHT
50'		45'		40'		35'		30'		25'		20'		15'		10'		
Side	Front	Side	Front	Side	Front	Side	Front	Side	Front	Side	Front	Side	Front	Side	Front	Side	Front	
														* 7,067	* 7,067			50'
										* 5,892	* 5,892	* 7,516	* 7,516					45'
								* 6,129	* 6,129	* 7,464	* 7,464	* 7,887	* 7,887					40'
						* 5,838	* 5,838	* 7,485	* 7,485	* 7,965	* 7,965	* 7,917	* 7,917					35'
				* 4,732	* 4,732	* 6,613	* 6,613	* 7,573	* 7,573	* 8,555	* 8,555	* 8,284	* 8,284					30'
				5,716	* 5,864	* 6,681	* 6,681	* 7,734	* 7,734	* 9,168	* 9,168	* 9,782	* 9,782	* 9,145	* 9,145			25'
				5,484	* 5,899	* 6,794	* 6,794	* 7,962	* 7,962	* 9,586	* 9,586	* 12,029	* 12,029	* 16,161	* 16,161	* 24,766	* 24,766	20'
		4,032	* 5,132	5,185	* 5,938	6,660	* 6,914	* 8,204	* 8,204	* 10,033	* 10,033	* 12,878	* 12,878	* 18,008	* 18,008			15'
		3,844	* 5,078	4,863	* 5,948	6,160	* 6,999	7,875	* 8,392	10,245	* 10,381	* 13,490	* 13,490					10'
		3,660	* 4,960	4,559	* 5,893	5,699	* 7,000	7,188	* 8,450	9,206	* 10,488	12,096	* 13,519					5'
		3,512	* 4,736	4,308	* 5,730	5,327	* 6,867	6,662	* 8,315	8,498	* 10,266	11,291	* 12,901					0'
		3,428	* 4,340	4,137	* 5,413	5,073	* 6,554	6,326	* 7,938	8,113	* 9,693	11,016	* 11,816	* 9,793	* 9,793			-5'
				4,067	* 4,875	4,949	* 6,009	6,173	* 7,283	7,987	* 8,776	* 10,385	* 10,385	* 11,217	* 11,217			-10'
				* 4,009	* 4,009	4,962	* 5,161	6,188	* 6,305	* 7,503	* 7,503	* 8,610	* 8,610					-15'
						* 3,889	* 3,889	* 4,921	* 4,921	* 5,817	* 5,817							-20'
																		-25'

The following notes pertain to this machine equipped with 31.5" wide track pads and 5,700# additional counterweight:

1. Do not attempt to lift or hold any load that exceeds these rated values at their specified load radii and heights.
2. The least stable position is over the side.
3. The operator should be fully acquainted with machine operation before operating the machine.
4. Lifting capacities assume a machine standing on level, firm and uniform supporting surface. Operator must make allowance for job conditions such as soft or uneven ground, out of level conditions, side loads, sudden stopping of loads, hazardous conditions, inexperienced personnel, etc.
5. The above theoretical ratings are based on calculations derived from standard O.E.M. lift charts. They do not exceed 87% of hydraulic lifting capacity or 75% of tipping capacity. Rated loads marked with an asterisk (\*) are limited by hydraulic lifting capacity.

REVISIONS				
ZONE	REV.	DESCRIPTION	DATE	APPROVED



MATERIAL:		
DESIGN	SCALE	DATE
APPROVED	BY	11/10/14
LEG. APPR.		


 4805 SCOOPY LANE NW  
 CARROLL, OHIO 43112  
 740-654-5304  
*The Cutting Edge of Customer Service*

PROPRIETARY AND CONFIDENTIAL  
 THE INFORMATION CONTAINED HEREIN  
 IS THE SOLE PROPERTY OF  
 COMPANY WRENCH. ANY  
 REPRODUCTION OR USE OF THIS  
 INFORMATION WITHOUT THE WRITTEN PERMISSION OF  
 COMPANY WRENCH IS PROHIBITED.

UNLESS OTHERWISE SPECIFIED  
 DIMENSIONS FOR PARTS ARE  
 AS FOLLOWS:  
 DECIMAL: .0001"  
 FRACTIONAL: 1/16"  
 ANGLE: .1°

**TITLE:** SK260LC-9 - 50' HIGH REACH RANGE  
**SCALE:** 1:40  
**SIZE:** D  
**DATE:** 11/10/14  
**SHEET 1 OF 1**

**DWG./PART NO.** 0M16042-3

# Lifting Capacities

P/N: 0M16042-4



SK260LC-9  
50 Foot High Reach  
Demolition Machine

**WARNING:** DO NOT OPERATE MACHINE OVER SIDE. OPERATE OVER FRONT ONLY WITH DRIVES TO THE REAR OF THE MACHINE.

Lift capacities calculated at attachment pivot point on stick (lbs).

No attachment on stick. Attachment weight must be subtracted.

REACH										HEIGHT
55'	50'	45'	40'	35'	30'	25'	20'	15'	10'	
										55'
								* 7,067		50'
						* 5,892	* 7,516			45'
					* 6,129	* 7,464	* 7,887			40'
					* 7,485	* 7,965	* 7,917			35'
					* 7,573	* 8,555	* 8,284			30'
					* 7,734	* 9,168	* 9,782	* 9,145		25'
						* 9,586	* 12,029	* 16,161	* 24,766	20'
							* 12,878			15'
							* 13,490			10'
							* 13,519			5'
							* 12,901			0'

The following notes pertain to this machine equipped with 31.5" wide track pads and 5,700# additional counterweight:

1. Do not attempt to lift or hold any load that exceeds these rated values.
2. When working, the boom must be in the fully upright position. Maximum forward tilt of boom is 29 degrees.
3. Machine must never be operated over the side.
4. The operator should be fully acquainted with machine operation before operating the machine.
5. Lifting capacities assume a machine standing on level, firm and uniform supporting surface. Operator must make allowance for job conditions such as soft or uneven ground, out of level conditions, side loads, sudden stopping of loads, hazardous conditions, inexperienced personnel, etc.
6. The above theoretical ratings are based on calculations derived from standard O.E.M. lift charts. They do not exceed 87% of hydraulic lifting capacity or 75% of tipping capacity. Rated loads marked with an asterisk (\*) are limited by hydraulic lifting capacity.