



# FTX128 Series

## 128 HP High Performance Compact Track Loader



**FTX128R Rubber Track**

**FTX128L Steel Track**

**PROVEN VERSATILE PERFORMANCE  
AVAILABLE IN TWO TRACK SYSTEMS**

# FTX128

# Performance & Service Access

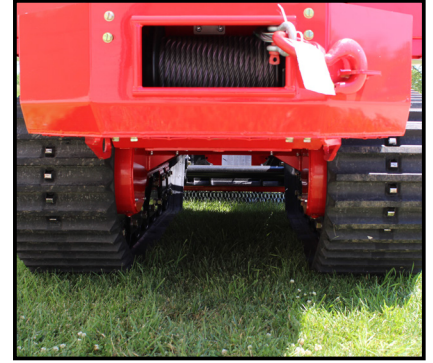
## PERFORMANCE



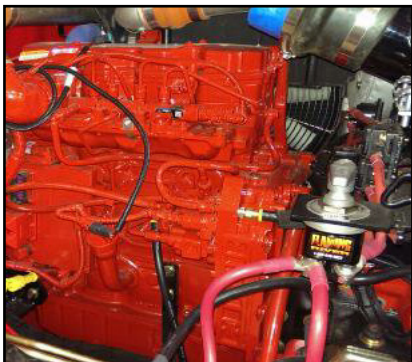
45° Gradeability with Power to Cut and Climb



**128HP AND 60GPM COUPLED WITH FECON POWER MANAGEMENT DELIVERS HIGH PERFORMANCE IN MULCHING, STUMP GRINDING AND MORE!**



15,000 lb Hydraulic Winch

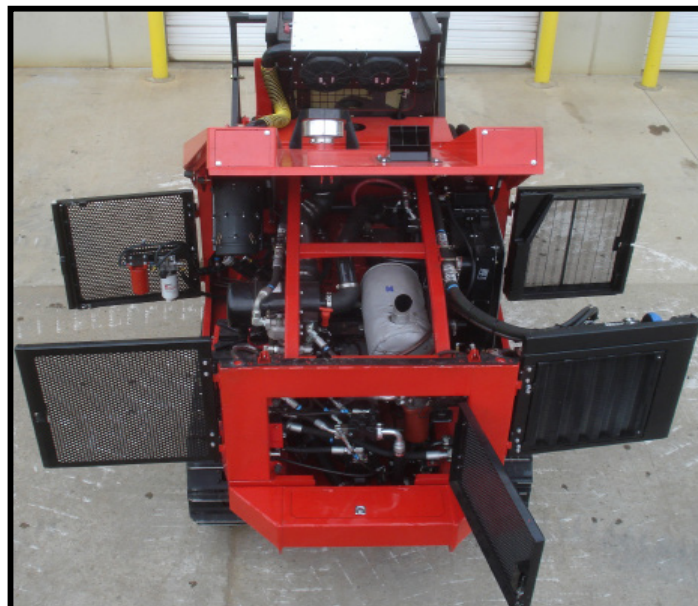


128 HP Cummins QSB4.5 Tier III Diesel Power, Rexroth & Kawasaki Hydraulics



Strong Traction from Steel Tracks with Single or Triple Grousers or Metal Imbedded Rubber Tracks for Pavement Applications

## SERVICE ACCESS



- LESS TIME SERVICING
- SWING OUT COOLER
- SAFE ACCESS FROM GROUND

- EFFICIENT DESIGN
- SIMPLE CLEANING
- LARGE DOORS

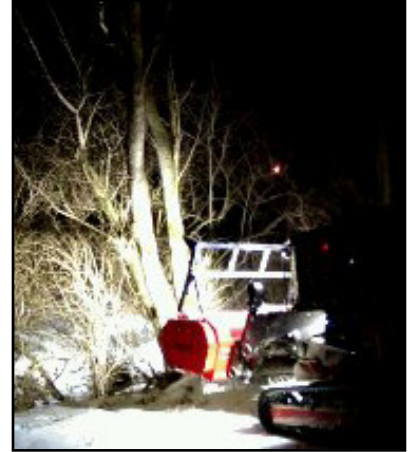
# FTX128

# Operators Cab & Versatility

## CAB, COMFORT & VISIBILITY

**Operator Comfort, Clear Visibility and the Confidence of Feeling Safe allows your operator to get top production with the FTX128L every day.**

- Swing Out Screen
- Corner Door for Easier Cab Entry
- Suspension Seat
- 4 Points of Egress
- 2 Way Latches on Roof Hatch
- Panoramic Operator View
- View of Back of Head
- Unobstructed Rear Visibility
- Optional Rear View Camera



## VERSATILITY



The FTX128L is engineered to handle a variety of productive forestry and land clearing attachments. In-cab adjustable flow makes it possible to switch between approved attachments. The universal quick attach coupler is compatible with most skid steer attachments giving greater versatility for profitability.

The FTX128L utilizes IQAN system controls and monitoring. IQAN allows in cab troubleshooting and ability to select hydraulic flows for various attachments and applications.





3460 Grant Dr.  
 Lebanon, OH 45036  
 800 528 3113  
 +1 513 696 4430  
 fecon.com  
 sales@fecon.com

	FTX128L	FTX128R
<b>Standard Bull Hog</b>	BH85SD	BH85SD
<b>General</b>		
<b>Overall Height</b>	96" / 2439 mm	105" / 2692mm
<b>Length - Tractor w/ Bull Hog®</b>	206" / 5232 mm	
<b>Weight - Tractor w/ Standard Bull Hog®</b>	17,897lbs / 8118 kgs	18,668 lb / 8468 kg
<b>Width - Tractor w/ Standard Bull Hog®</b>	87" / 2209 mm	
<b>Engine</b>		
<b>Air Cleaner</b>	Dual with Pre-Cleaner	
<b>Cooling</b>	Water Cooled	
<b>Fuel Consumption</b>	4 - 5 gph / 15 - 19 lph	
<b>Fuel Tank</b>	45 gal / 170 ltr	
<b>Horsepower</b>	128 / 95.4 kw	
<b>Engine Make / Model</b>	Cummins QSB4.5 Tier III	
<b>Maximum Rated Torque @ RPM</b>	403 ft. lbs. @ 1400 rpm	
<b>Maximum RPM</b>	2000	
<b>Number of Cylinders</b>	4	
<b>Hydraulic</b>		
<b>Hi-Flow Circuit PSI / GPM</b>	4600 psi / 60 gpm • 317 bar / 227 lpm	
<b>Low Flow Circuit PSI / GPM</b>	3000 psi / 26 gpm • 207 bar / 98 lpm	
<b>Hydraulic Cooling Fan</b>	Reversing Standard	
<b>Hydraulic Reservoir</b>	55 gal / 208 ltr	
<b>Undercarriage</b>		
<b>Ground Pressure (per SAE J1309)</b>	3.7 psi / 26 kPa	4.7psi / 33 kPa
<b>Rollers Top / Bottom</b>	1 / 8	2 / 7
<b>Track Width</b>	20" / 500 mm	
<b>Travel Speed</b>	4 mph / 6.4 kph	
<b>Ground Clearance</b>	16" / 410 mm	23" / 584 mm
<b>Cab</b>		
<b>Cab Pressurized</b>	Yes	
<b>ROPS, FOPS &amp; OPS</b>	Yes	
<b>Heater / Defroster</b>	Standard	
<b>Air Conditioning</b>	Standard	



- Operator's cab must be protected with both properly maintained 1/2" LEXAN® Glass (or equal) and Falling Object Protection.
- Specifications subject to change without notice. • Photographs may have been altered for marketing purposes.
- Certain guarding and features may have been removed for illustrative purposes, always run with proper guarding.
- Weights may vary based on options. • Safety Is The Responsibility Of The Operator.
- Always ensure that your carrier manufacturers safety features (including Falling Object Protection, and Roll-Over Protection) meet your job safety requirements.



GS-30F-0019S