



**Made in the USA**

**Family Focused, Privately Owned**

What sets Fortress apart? In a word: **POWER.**

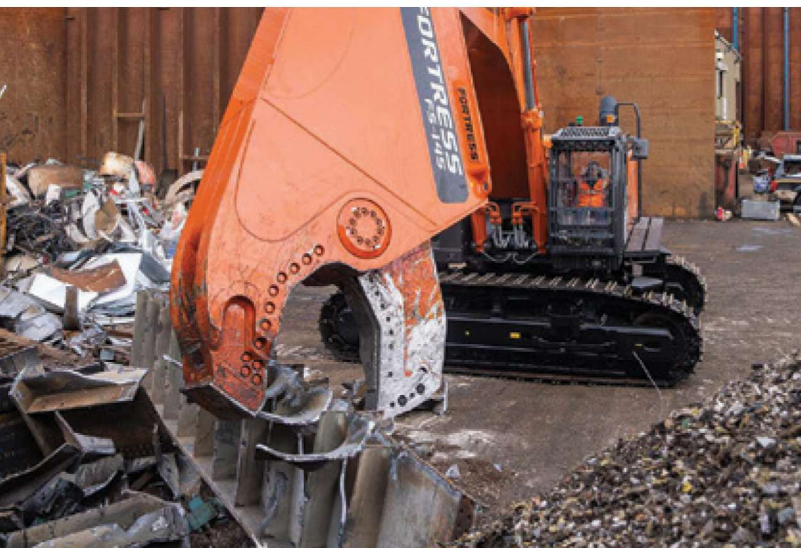
ShearCore combines hydraulic and geometric excellence to produce a shear that is  
**unmatched in real-world performance.**

## **FORTRESS™** Shear Specifications

Model	Approx. Shear Weight (lbs.)	Jaw Opening (in.)	Jaw Depth (in.)	Reach	Min Excavator Boom Mount (lbs.)	Min Excavator Stick Mount (lbs.)
FS25R	5,900	23	19	8' 8"	30,000	45,000
FS35R	7,200	26	23	9' 5"	40,000	67,000
FS45R	11,200	28	28	10' 8"	50,000	90,000
FS55R	13,000	30	30	11' 8"	57,000	110,000
FS75R	15,700	32	32	12' 0"	75,000	125,000
FS85R	17,500	35	38	13' 4"	82,000	165,000
FS95R	21,600	39	42	13' 7"	105,000	185,000
FS145R	28,600	43	46	14' 4"	145,000	250,000
FS175R	Contact Us					
FS245R	50,600	48	52	17' 2"	Contact us	Contact us

Models listed are rotating shears. Non-rotating models are available in FS45-FS245. Weights may vary depending on configuration options. FS25-FS35 listed weight is typical 3rd member universal. FS45-FS245 listed weight is typical 2nd member universal mount.

# MOBILE SHEARS



**Structurally Superior**



**Unmatched Power to Weight**

More power requires more strength and rigidity. Our unique manufacturing capabilities allow us to utilize **6" high-yield plate** and use fewer overall components.

Fewer components mean less welds creating a **structurally superior shear**.

Two piece bolt-on  
piercing tip

Unmatched power  
at the tip

Massive solid shaft pivot  
group boosts performance  
and durability

Upper and lower are  
milled from 6" high  
yield plate steel

Razor blade that spans the  
outside of the guide blades,  
allowing easier shimming

Machined weld seams provide  
superior fitment between lower jaw  
and stick body, improving strength

All hydraulic circuits are duty  
cycle tested to typical operating  
pressures and flow prior to delivery

