



US
Material Handler | F-Series

331/335 MHL



154 hp



max. 56,217 lbs



max. 39'4"



FUCHS[®]
A TEREX BRAND

TECHNICAL DATA

OPERATING WEIGHT WITHOUT ATTACHMENTS

MHL331 F	50,265–53,351 lbs
MHL335 F	52,690–56,217 lbs

DIESEL ENGINE

Manufacturer and model	Deutz TCD 4.1 L4
Design	4-cylinder in-line engine
Control	EMR IV
Method of operation	4-cycle diesel, common rail direct injection, turbocharged with intercooler, controlled exhaust gas recirculation, diesel particulate filter with continuous regeneration and SCR catalytic converter
Engine power	154 hp (115 kW)
Rated speed	2,000 rpm
Displacement	250 cui
Cooling system	Water and charge air cooling with temperature controlled fan speed
Exhaust emission standard	EPA Tier 4 final / EU stage IV
Fuel tank	69 gal Diesel
DEF / Urea tank	8.5 gal AdBlue

ELECTRICAL SYSTEM

Generator	28 V / 100 A
Operating voltage	24 V
Battery	2 × 12 V / 110 Ah / 750 A (according to EN)
Lighting system	2 × LED headlamps, turn indicators and tail lights
Optional equipment	11 kW or 13 kW DC generator with controls and insulation monitoring

TRANSMISSION

Hydrostatic travel drive via infinitely variable axial piston motor with directly mounted travel brake valve, two-speed manual gearshift, 4-wheel drive

Travel speed 1 st gear	3.1 mph
Travel speed 2 nd gear	11.2 mph
Gradeability	max. 40 %
Turning radius MHL331 F	25'11"
Turning radius MHL335 F	26'10"

SWING DRIVE

Slew ring	Internally geared, double-row ball turning ring
Drive	2-stage planetary gear with integrated multi-disc brake
Uppercarriage swing speed	0–7.5 rpm variable
Rotating interlock	electrically activated

UNDERCARRIAGE

Front axle	Planetary drive axle with integrated multi-disc brake, rigidly mounted, max. steering angle: 29°
Rear axle	Oscillating planetary drive rear axle with integrated multi-disc brake and selectable oscillating lock
Stabilizers	4-point stabilizers 2-point-stabilizers and support blade
Tires	10.00-20 solid rubber with intermediate rings

BRAKE SYSTEM

Service brake	Hydraulic single-circuit braking system acting on all four wheel pairs (multi-disc brakes)
Parking brake	Electrically operated spring-loaded disc brake on the transmission, acting on both front and rear axle

HYDRAULIC SYSTEM

Pump delivery rate	max. 100 gpm
Operating pressure	4641 / 5221 psi
Hydraulic oil tank	86 gal

OPERATOR'S CAB

Cab	Infinitely variable hydraulic height-adjustment with eye level up to 17'5" above ground Sound-deadened; ample thermal panoramic glass windows; windshield with pull-down sunblind; viewing window on cab roof; sliding window in cab door, sliding door
Climate control	Automatic air-conditioning. Infinitely variable heating with 8-speed fan, 10 adjustable air nozzles, including 4 in the roof lining, 3 defroster nozzles
Operator's seat	Air-cushioned comfort-seat with integrated headrest, safety belt and lumbar support, seat heating with integrated A/C function optional. Comfortable operation with multiple adjustment options for seat position, seat inclination, seat cushion placement in relation to armrests and pilot control units. Articulating armrest and joysticks
Monitoring	Ergonomic layout; anti-glare instrumentation. Multi-function display, automatic monitoring and recording of abnormal operating conditions (including all hydraulic oil filters, hydraulic oil temperature (cold/hot), coolant temperature and charge air temperature, diesel particulate filter load, visual and audible warning indication with shutdown of pilot controls/engine power reduction. Diagnosis of individual sensors possible via the multifunction display. Rear view camera and side view camera
Sound levels	Sound power level (ambience) L _{WA} 99.1 dB(A) (metered) acc. to directive 2000/14/EC L _{WA} 102 dB(A) (guaranteed) acc. to directive 2000/14/EC Sound pressure level (inside the cabin) acc. to directive ISO 6396 L _{PA} 74 dB(A)

Certified in accordance with CE regulations

EQUIPMENT

DIESEL ENGINE

	Standard	Option
Intercooler and coolant radiator	•	
Direct electronic fuel injection / common rail	•	
Advanced automatic idle incl. engine shut-off function	•	
Engine preheating		•
Engine diagnostics interface	•	
Temperature-dependent fan drive	•	

UNDERCARRIAGE

All-wheel drive with differential	•	
Multi-disc brake	•	
Rear axle oscillating lock	•	
2-speed powershift transmission		•
4-point stabilizers	•	
Dozer blade in addition to 4-point stabilizers		•
2-point stabilizers and support blade (MHL331)		•
Stabilizer cylinders with integrated two-way check valves	•	
Piston rod protection on stabilizer cylinders	•	
Tool box	•	
Special paint (customer paint work)		•
Solid rubber tires with intermediate rings	•	

UPPERCARRIAGE

Separate cooling systems (combi-cooler for engine and hydraulic oil cooler)	•	
Cooling system with temperature-dependent fan drive	•	
Fan drive reversing function	•	
Automatic central lubrication system	•	
Rear view camera	•	
Side view camera	•	
Travel alarm		•
Electric refuelling pump		•
Lighting protection		•
Special paint (customer paint work)		•

CAB

	Standard	Option
Hydraulically adjustable cab	•	
3-layer glass with protection film	•	
Sliding window in cab door	•	
Reinforced glass (windscreen and roof panel)		•
Washer system (windshield)	•	
Roof washer system (skylight)		•
Air-cushioned operator seat with headrest, seatbelt, and lumbar support	•	
Seat heating with integrated A/C function		•
Joystick steering	•	
Steering column, height and tilt adjustable		•
Automatic air conditioning system	•	
Independent heating system		•
Multi-function display	•	
Document net	•	
Protective grilles to front and roof		•
12V transformer		•
Radio USB & Bluetooth (EU & USA)	•	
12V socket		•
Fire extinguisher, dry powder		•
Travel alarm w/ rotating beacon		•

OTHER EQUIPMENT

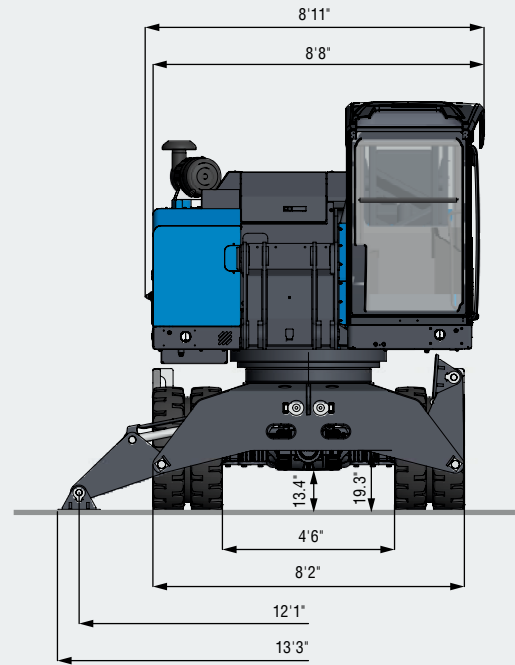
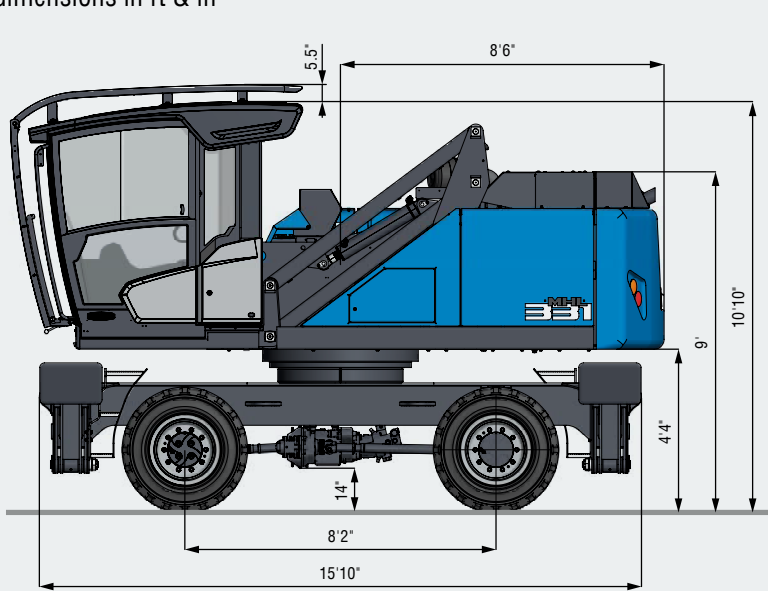
11 kW DC generator with controls		•
13 kW DC generator with controls		•
Close proximity range limiter for dipperstick	•	
Coolant and hydraulic oil level monitoring system	•	
Overload and working range monitoring		•
Filter system for attachments		•
Hose rupture valve for boom cylinder		•
Hose rupture valve for stick cylinder		•
Overload warning device		•
Quick coupling on dipperstick	•	
Dipperstick impact protection		•
Active cyclone prefilter (TOP AIR)		•
Hydraulic oil preheating		•
Lubrication of the grab suspension by central lubrication system	•	
Light packages LED		•
LED front headlights	•	
LED working lights cabin roof front	•	
Lifting cylinder w/ end position damping (piston accumulator)		•
Fuchs Telematics System, incl. 2 years service	•	

Further optional equipment available on request!

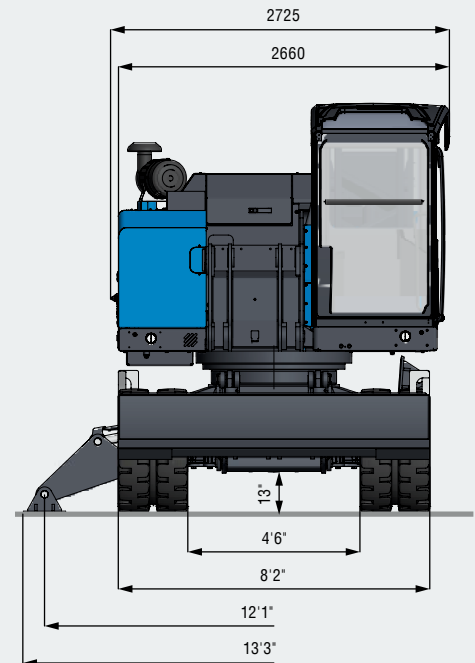
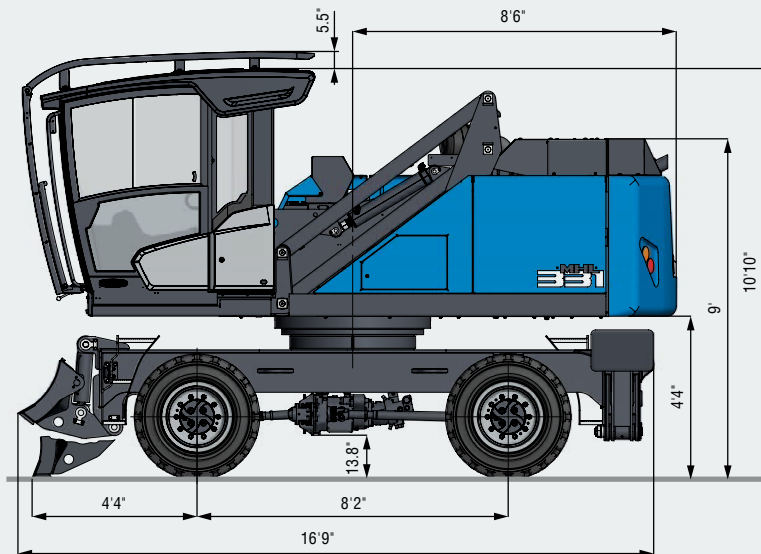
DIMENSIONS

4-POINT STABILIZERS

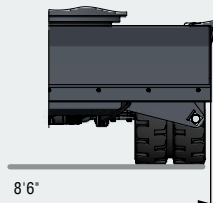
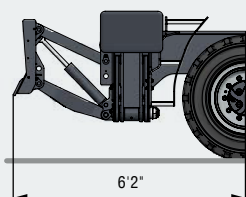
All dimensions in ft & in



2-POINT STABILIZERS AND SUPPORT BLADE



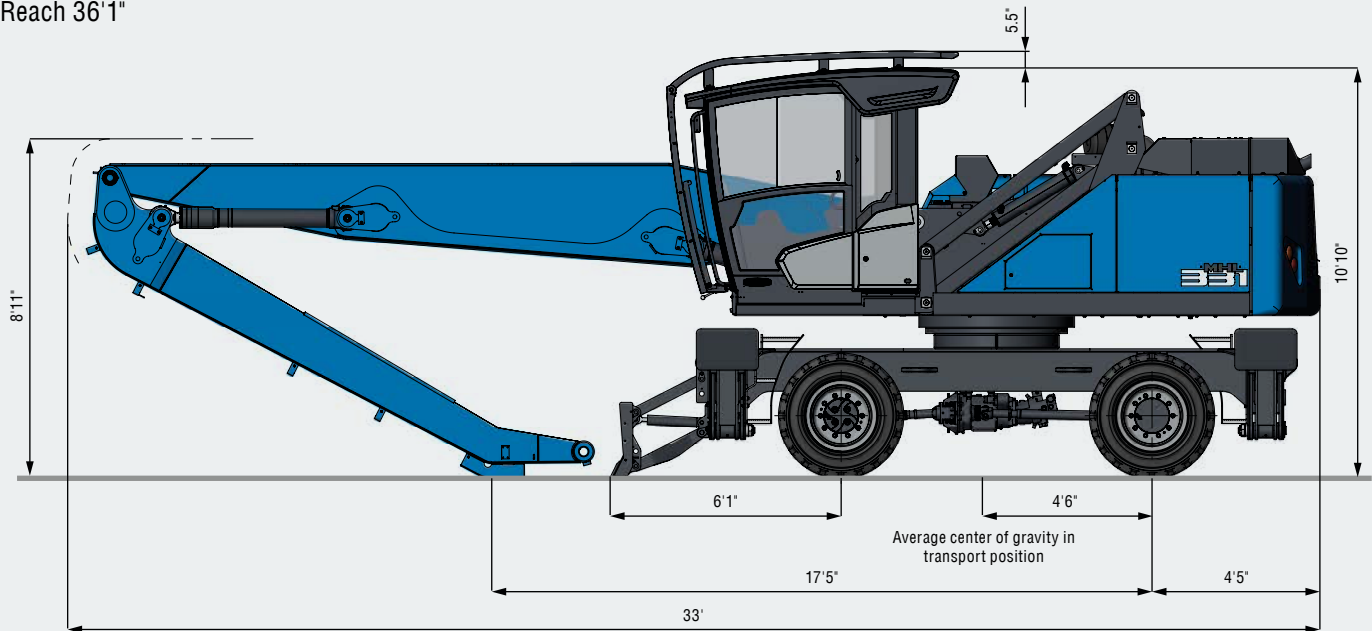
DOZER BLADE IN ADDITION TO 4-POINT STABILIZERS



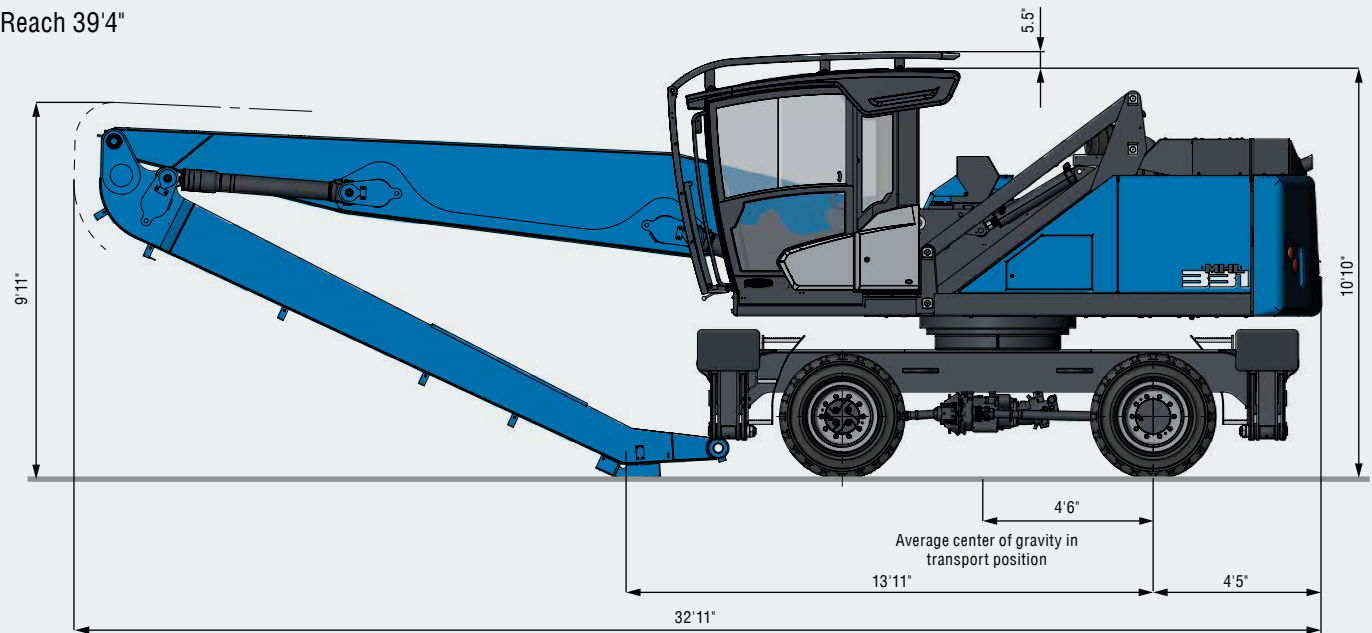
TRANSPORT DIMENSIONS

All dimensions in ft & in

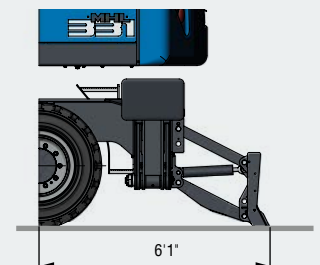
Reach 36'1"



Reach 39'4"



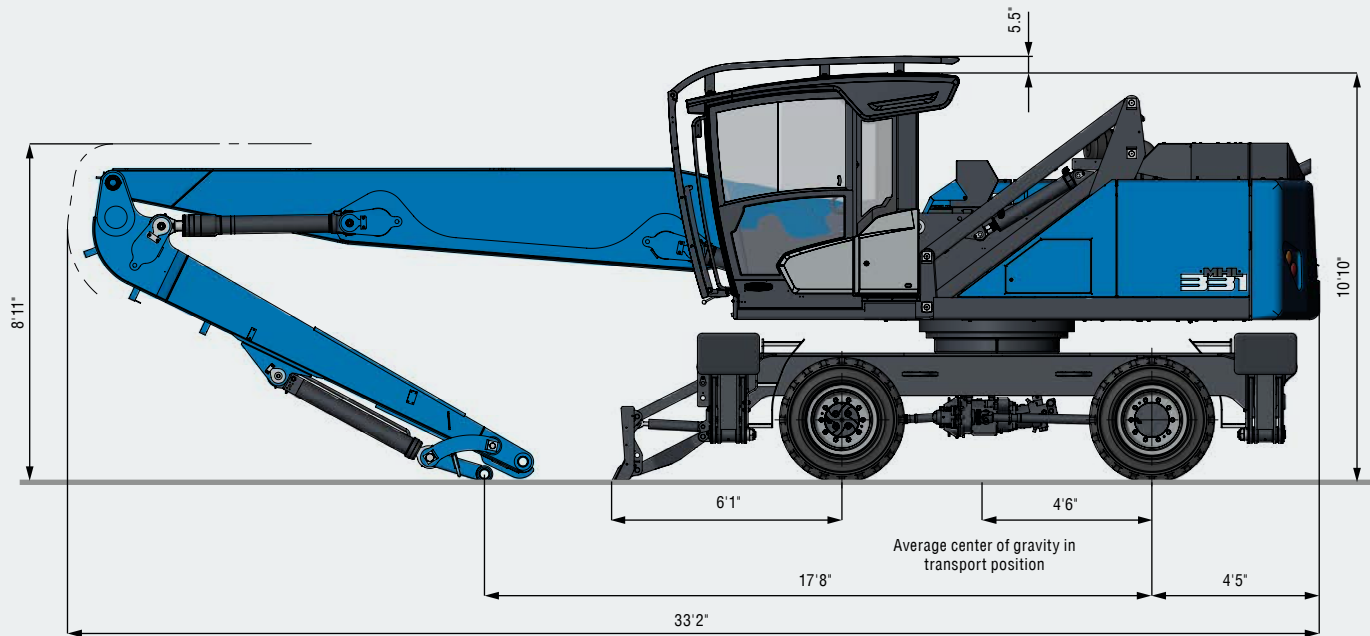
Transport position with dozer blade
Undercarriage rotated by 180°



TRANSPORT DIMENSIONS

All dimensions in ft & in

Reach 35'1" | Multi-purpose stick



WORKING RANGE

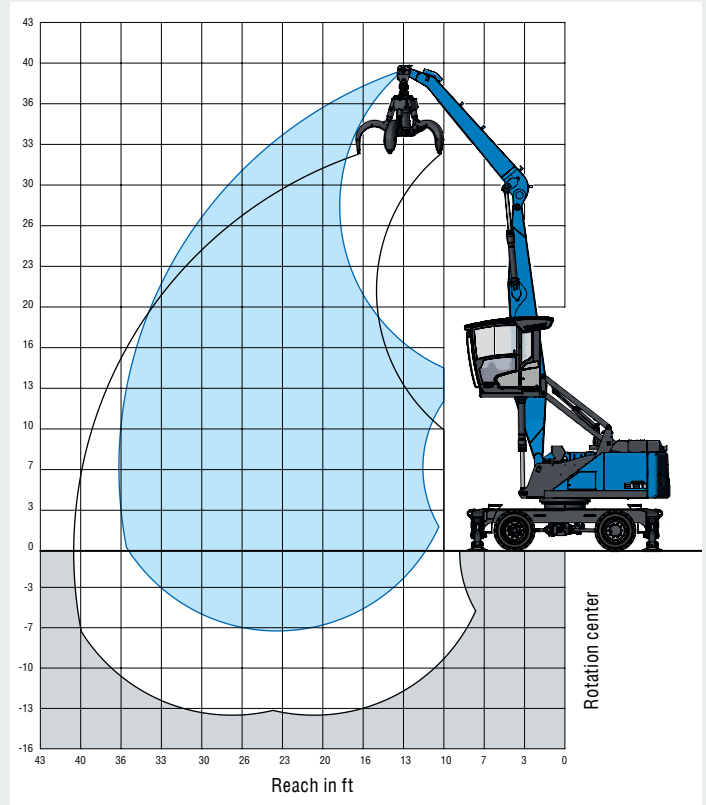
REACH 36'2" WITH DIPPERSTICK

Loading equipment	Boom 21.3'
	Dipperstick 14.4'
	Cactus grab 0.78 yd ³ open

RECOMMENDED ATTACHMENTS

Fuchs cactus grab 0.52 yd ³	Open or half-closed
Fuchs cactus grab 0.78 yd ³	Open or half-closed
Fuchs cactus grab 1.05 yd ³	Open or half-closed
Clamshell grab 1.57 yd ³	Density of materials handled up to 87.4 lbs/ft ³
Lift hook	22,046 lbs

The lift capacity values are stated in imperial pounds (lbs). The pump pressure is 5,221 psi. In accordance with ISO 10567 the lift capacity values represents 75% of the static tipping loads or 87% of the hydraulic lifting force (marked *). On solid and level ground the values apply to a swing range of 360°. The (...) values apply in the longitudinal direction of the undercarriage. The values for "not supported" only apply via the steering axle or the locked oscillating axle. The weights of the attached load hoisting equipment (grab, load hook, etc.) must be deducted from the lift capacity values. The working load of the lifting device must be observed. In accordance with the EN 474-5 for object handling application hose rupture valves on the boom and stick cylinders, an overload warning device and the lift capacity table in the cab are required. For object handling application the machine has to be supported on a level ground.



LIFTING CAPACITY

Height [ft]	Undercarriage outrigger	Reach [ft]				
		15	20	25	30	35
35	not supported		(11,400)			
	4-point supported		12,300* (12,300*)			
	2-point supported with support blade		12,300* (12,300*)			
30	not supported		(11,700)	(8,100)		
	4-point supported		13,900* (13,900*)	12,500* (12,500*)		
	2-point supported with support blade		13,900* (13,900*)	10,500 (12,500*)		
25	not supported		(11,600)	(8,100)	(6,000)	
	4-point supported		14,000* (14,000*)	12,600* (12,600*)	9,400 (10,900*)	
	2-point supported with support blade		14,000* (14,000*)	10,500 (12,600*)	7,700 (10,900*)	
20	not supported		(11,300)	(7,900)	(5,900)	
	4-point supported		14,900* (14,900*)	12,500 (13,100*)	9,300 (11,500)	
	2-point supported with support blade		14,900* (14,900*)	10,300 (13,100*)	7,700 (11,800)	
15	not supported	(16,700)	(10,700)	(7,600)	(5,700)	(4,500)
	4-point supported	21,200* (21,200*)	16,600* (16,600*)	12,100 (13,900*)	9,200 (13,100)	7,200 (8,900)
	2-point supported with support blade	21,200* (21,200*)	14,100 (16,600*)	9,900 (13,900*)	7,500 (11,800)	5,800 (9,200)
10	not supported	(15,100)	(10,000)	(7,200)	(5,500)	(4,400)
	4-point supported	25,600* (25,600*)	16,400 (18,600*)	11,700 (14,700)	8,900 (11,100)	7,100 (8,800)
	2-point supported with support blade	20,400 (25,600*)	13,200 (18,600*)	9,500 (15,000*)	7,200 (11,500)	5,700 (9,100)
5	not supported	(13,700)	(9,300)	(6,900)	(5,300)	(4,300)
	4-point supported	22,300* (22,300*)	15,700 (20,100)	11,300 (14,200)	8,700 (10,900)	7,000 (8,700)
	2-point supported with support blade	18,800 (21,100)	12,400 (20,200*)	9,100 (14,800)	7,000 (11,300)	5,600 (9,000)
0	not supported	(13,100)	(8,900)	(6,600)	(5,200)	(4,200)
	4-point supported	15,300* (15,300*)	15,200 (19,600)	11,000 (13,900)	8,500 (10,700)	6,900 (8,600)
	2-point supported with support blade	15,300* (15,300*)	11,900 (20,300)	8,800 (14,400)	6,800 (11,100)	5,600 (8,900)
-5	not supported		(8,700)	(6,500)	(5,100)	
	4-point supported		14,900 (19,300)	10,900 (13,800)	8,500 (10,600)	
	2-point supported with support blade		11,700 (20,000)	8,600 (14,300)	6,800 (11,000)	
						Reach max. 36.2'
6.6'	not supported					(4,000)
	4-point supported					6,500 (8,100)
	2-point supported with support blade					5,200 (8,400)

WORKING RANGE

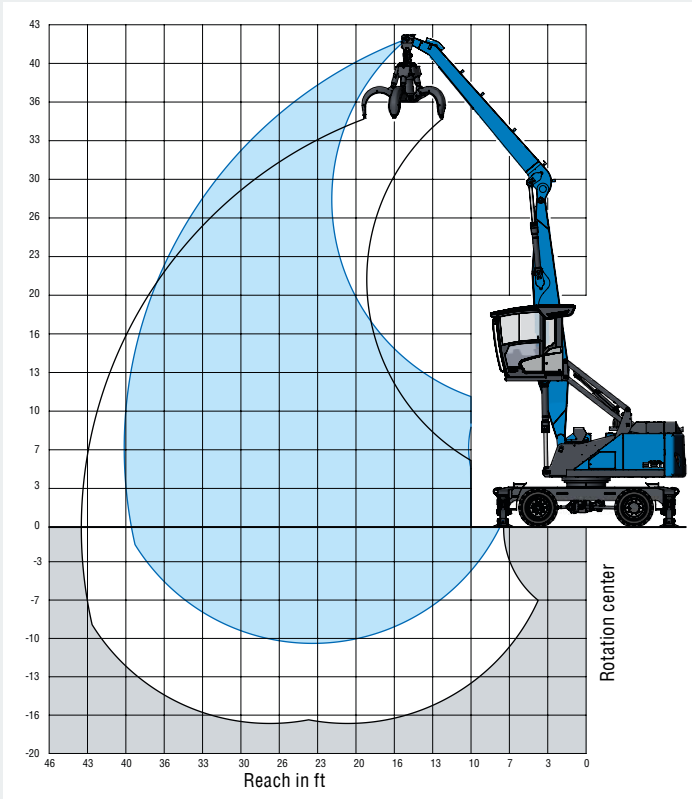
REACH 39'4" WITH DIPPERSTICK

Loading equipment	Boom 21.3'
	Dipperstick 17.8'
	Cactus grab 0.78 yd ³ open

RECOMMENDED ATTACHMENTS

Fuchs cactus grab 0.52 yd ³	Open or half-closed
Fuchs cactus grab 0.78 yd ³	Open or half-closed
Magnet plate	Fuchs magnet plate
Clamshell grab 1.31 yd ³	Density of materials handled up to 87.4 lbs/ft ³
Lift hook	22,046 lbs

The lift capacity values are stated in imperial pounds (lbs). The pump pressure is 5,221 psi. In accordance with ISO 10567 the lift capacity values represents 75% of the static tipping loads or 87% of the hydraulic lifting force (marked °). On solid and level ground the values apply to a swing range of 360°. The (...) values apply in the longitudinal direction of the undercarriage. The values for "not supported" only apply via the steering axle or the locked oscillating axle. The weights of the attached load hoisting equipment (grab, load hook, etc.) must be deducted from the lift capacity values. The working load of the lifting device must be observed. In accordance with the EN 474-5 for object handling application hose rupture valves on the boom and stick cylinders, an overload warning device and the lift capacity table in the cab are required. For object handling application the machine has to be supported on a level ground.



LIFTING CAPACITY

Height [ft]	Undercarriage outrigger	Reach [ft]					
		15	20	25	30	35	40
35	not supported			(8,300)			
	4-point supported			9,500° (9,500°)			
	2-point supported with support blade			9,500° (9,500°)			
30	not supported			(8,500)	(6,200)		
	4-point supported			11,100° (11,100°)	8,900° (8,900°)		
	2-point supported with support blade			11,000 (11,100°)	8,000 (8,900°)		
25	not supported			(8,400)	(6,200)	(4,600)	
	4-point supported			11,200° (11,200°)	9,600 (10,500°)	6,900° (6,900°)	
	2-point supported with support blade			10,900 (11,200°)	8,000 (10,500°)	6,100 (6,900°)	
20	not supported		(12,300)	(8,200)	(6,100)	(4,600)	
	4-point supported		12,900° (12,900°)	11,700° (11,700°)	9,500 (10,700°)	7,400 (9,000)	
	2-point supported with support blade		12,900° (12,900°)	10,700 (11,700°)	7,900 (10,700°)	6,100 (9,500)	
15	not supported		(11,200)	(7,900)	(5,900)	(4,500)	
	4-point supported		14,600° (14,600°)	12,500 (12,600°)	9,300 (11,200°)	7,300 (8,900)	
	2-point supported with support blade		14,600° (14,600°)	10,300 (12,600°)	7,700 (11,200°)	5,900 (9,400)	
10	not supported	(16,100)	(10,400)	(7,500)	(5,600)	(4,400)	(3,500)
	4-point supported	22,100° (22,100°)	16,800° (16,800°)	12,000 (13,800°)	9,100 (11,100)	7,100 (8,800)	5,700 (6,800°)
	2-point supported with support blade	21,700 (22,100°)	13,700 (16,800°)	9,800 (13,800°)	7,400 (11,700)	5,800 (9,200)	4,600 (6,300)
5	not supported	(14,400)	(9,800)	(7,000)	(5,400)	(4,300)	(3,500)
	4-point supported	25,500 (26,500°)	16,00 (19,200°)	11,500 (14,300)	8,800 (10,800)	7,000 (8,600)	5,700 (6,800°)
	2-point supported with support blade	19,600 (26,500°)	12,800 (18,900)	9,200 (14,900°)	7,100 (11,300)	5,600 (9,000)	4,600 (6,800°)
0	not supported	(13,400)	(9,100)	(6,700)	(5,200)	(4,100)	
	4-point supported	20,400° (20,400°)	15,300 (19,500)	11,000 (13,800)	8,500 (10,600)	6,900 (8,500)	
	2-point supported with support blade	18,200 (19,800)	12,00 (20,300°)	8,800 (14,500)	6,800 (11,100)	5,500 (8,900)	
-5	not supported	(12,700)	(8,600)	(6,400)	(5,000)	(4,100)	
	4-point supported	16,400° (16,400°)	14,900 (19,100)	10,800 (13,600)	8,400 (10,400)	6,800 (8,400)	
	2-point supported with support blade	16,400° (16,400°)	11,600 (19,900)	8,500 (14,200,)	6,600 (10,900)	5,400 (8,800)	
Reach max. 39.4'							
6.6'	not supported						(3,400)
	4-point supported						5,700 (6,500°)
	2-point supported with support blade						4,600 (6,500°)

WORKING RANGE

REACH 35'0" WITH MULTI-PURPOSE STICK

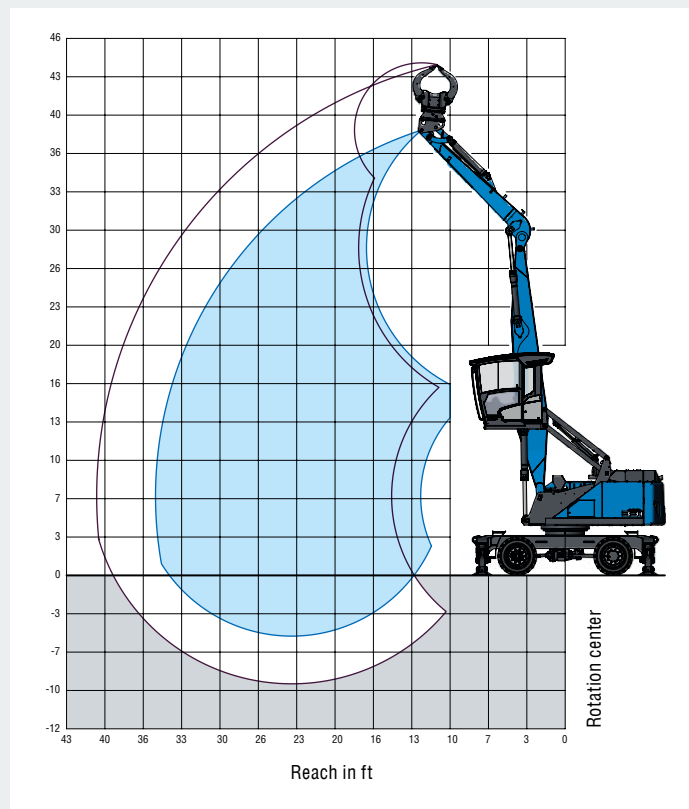
Loading equipment

Boom 21.3'

Dipperstick 13.1'

Sorting grapple 0.59 yd³

The lift capacity values are stated in imperial pounds (lbs). The pump pressure is 5,221 psi. In accordance with ISO 10567 the lift capacity values represents 75% of the static tipping loads or 87% of the hydraulic lifting force (marked *). On solid and level ground the values apply to a swing range of 360°. The (...) values apply in the longitudinal direction of the undercarriage. The values for "not supported" only apply via the steering axle or the locked oscillating axle. The weights of the attached load hoisting equipment (grab, load hock, etc.) must be deducted from the lift capacity values. The working load of the lifting device must be observed. In accordance with the EN 474-5 for object handling application hose rupture valves on the boom and stick cylinders, an overload warning device and the lift capacity table in the cab are required. For object handling application the machine has to be supported on a level ground.



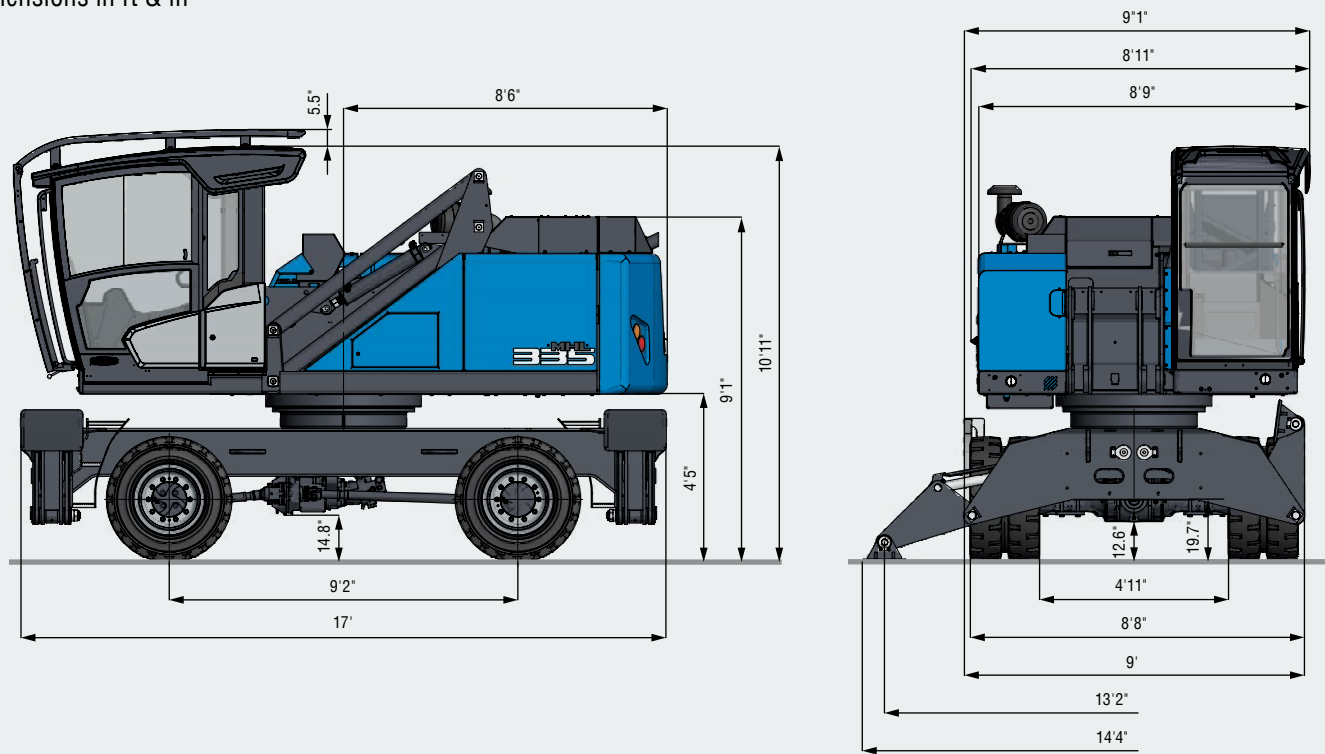
LIFTING CAPACITY

Height [ft]	Undercarriage outrigger	Reach [ft]				
		15	20	25	30	35
30	not supported		(11,000)	(7,500)		
	4-point supported		13,900* (13,900°)	11,100* (11,100°)		
	2-point supported with support blade		13,900* (13,900°)	9,800 (11,100°)		
25	not supported		(11,000)	(7,500)	(5,300)	
	4-point supported		14,000* (14,000°)	12,100 (12,400°)	8,800* (8,800°)	
	2-point supported with support blade		14,000* (14,000°)	9,800 (12,400°)	7,000 (8,800°)	
20	not supported	(17,000)	(10,600)	(7,300)	(5,300)	
	4-point supported	18,300° (18,300°)	14,900° (14,900°)	11,900 (12,800°)	8,700 (10,800)	
	2-point supported with support blade	18,300° (18,300°)	14,000 (14,900°)	9,600 (12,800°)	7,000 (11,300)	
15	not supported	(15,700)	(10,000)	(7,000)	(5,200)	
	4-point supported	21,600° (21,600°)	16,600 (16,700°)	11,500 (13,900°)	8,600 (10,700)	
	2-point supported with support blade	21,200 (21,600°)	13,200 (16,500)	9,200 (13,500)	6,800 (11,100)	
10	not supported	(14,100)	(9,300)	(6,800)	(5,000)	(3,800)
	4-point supported	25,200 (26,100°)	15,700 (18,300°)	11,100 (13,900)	8,400 (10,400)	6,600 (8,200)
	2-point supported with support blade	19,100 (25,700)	12,300 (18,300°)	8,800 (14,400°)	6,600 (10,800)	5,100 (8,500)
5	not supported	(12,800)	(8,600)	(6,300)	(4,800)	(3,800)
	4-point supported	16,900° (16,900°)	15,000 (19,200)	10,700 (13,500)	8,200 (10,200)	6,500 (8,100)
	2-point supported with support blade	16,300 (16,300)	11,500 (19,600°)	8,300 (14,000)	6,300 (10,600)	5,000 (8,400)
0	not supported	(12,400)	(8,300)	(6,100)	(4,700)	
	4-point supported	13,800° (13,800°)	14,500 (18,700)	10,400 (13,200)	8,000 (10,100)	
	2-point supported with support blade	13,800° (13,800°)	11,100 (19,400)	8,000 (13,700)	6,200 (10,400)	
-5	not supported			(5,900)		
	4-point supported			10,300 (13,100)		
	2-point supported with support blade			7,900 (13,600)		
Reach max. 35.0'						
6.6'	not supported					(3,700)
	4-point supported					6,300 (8,000)
	2-point supported with support blade					4,900 (8,200)

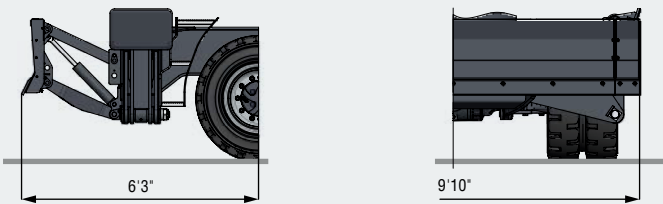
DIMENSIONS

4-POINT STABILIZERS

All dimensions in ft & in



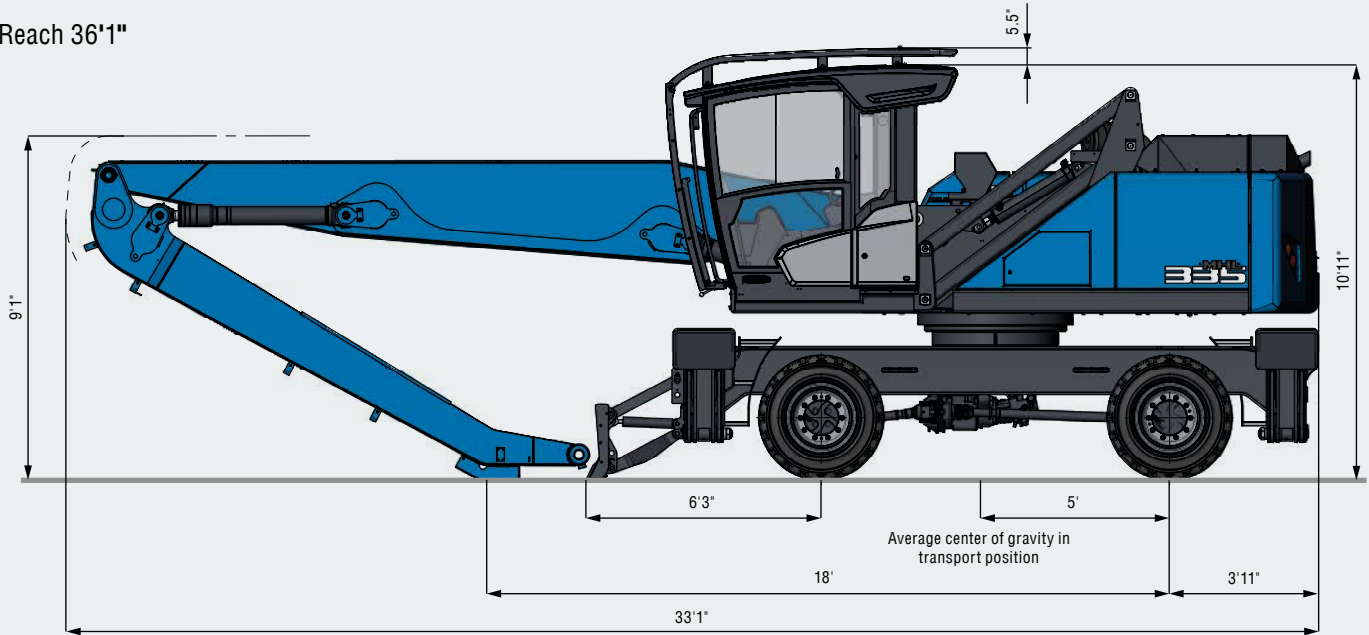
DOZER BLADE IN ADDITION TO 4-POINT STABILIZERS



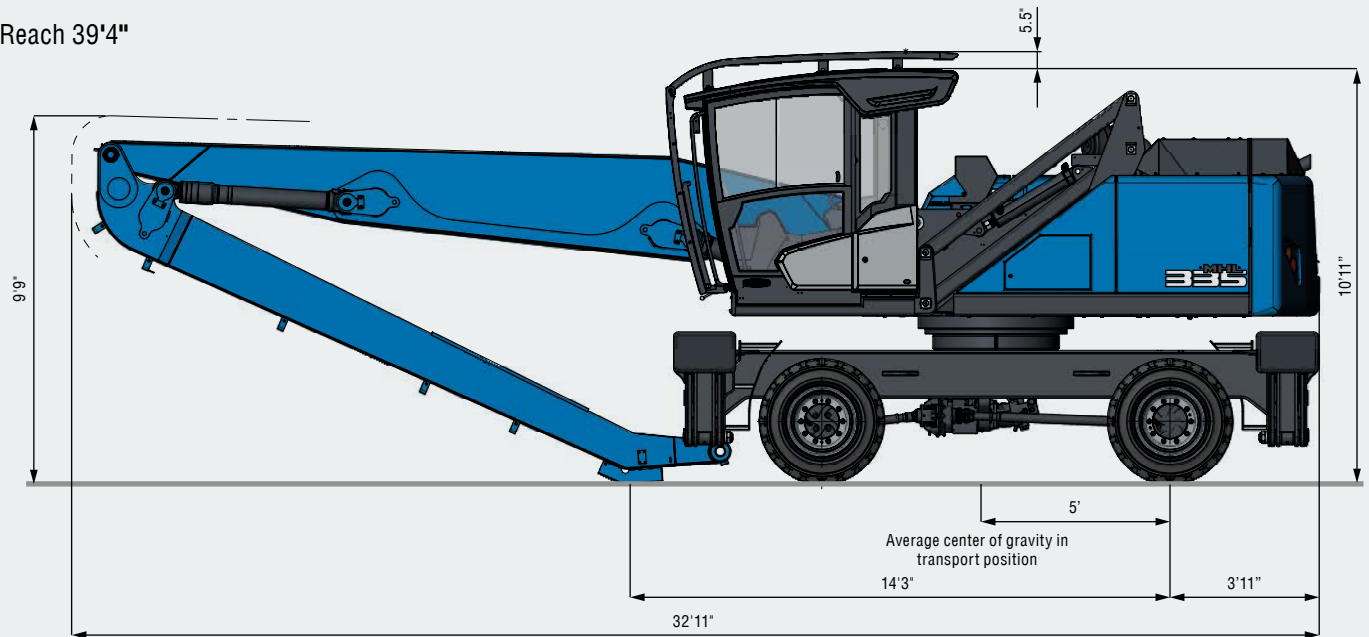
TRANSPORT DIMENSIONS

All dimensions in ft & in

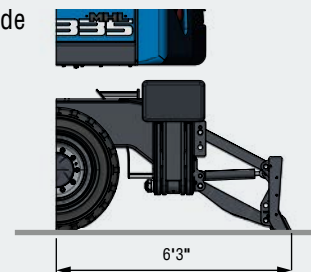
Reach 36'1"



Reach 39'4"



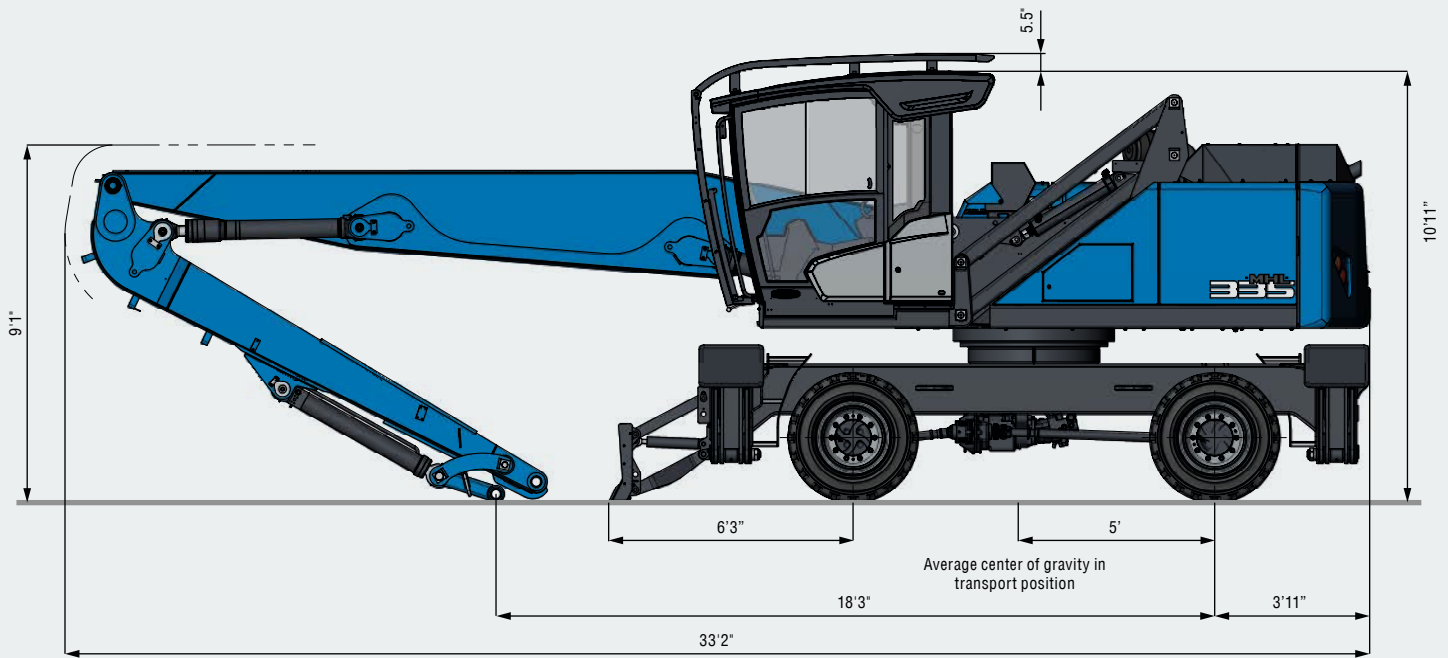
Transport position with dozer blade
Undercarriage rotated by 180°



TRANSPORT DIMENSIONS

All dimensions in ft & in

Reach 10.7 m | Multi-purpose stick



WORKING RANGE

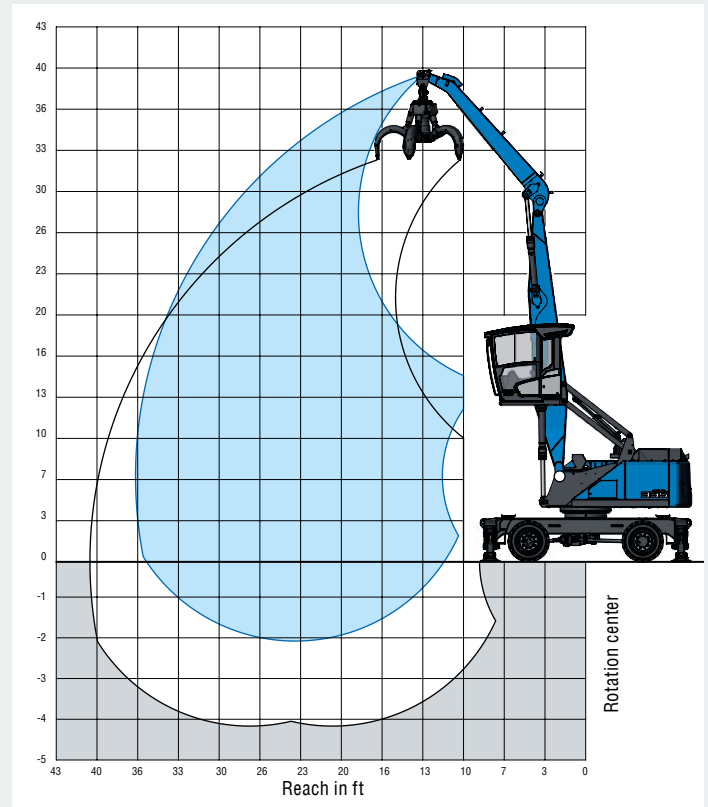
REACH 36'1" WITH DIPPERSTICK

Loading equipment	Boom 21.3'
	Dipperstick 14.4'
	Cactus grab 0.78 yd ³ open

RECOMMENDED ATTACHMENTS

Fuchs cactus grab 0.52 yd ³	Open or half-closed
Fuchs cactus grab 0.78 yd ³	Open or half-closed
Fuchs cactus grab 1.05 yd ³	Open or half-closed
Clamshell grab 1.57 yd ³	Density of materials handled up to 87.4 lbs/ft ³
Lift hook	22,046 lbs

The lift capacity values are stated in imperial pounds (lbs). The pump pressure is 5,221 psi. In accordance with ISO 10567 the lift capacity values represents 75% of the static tipping loads or 87% of the hydraulic lifting force (marked *). On solid and level ground the values apply to a swing range of 360°. The (...) values apply in the longitudinal direction of the undercarriage. The values for "not supported" only apply via the steering axle or the locked oscillating axle. The weights of the attached load hoisting equipment (grab, load hook, etc.) must be deducted from the lift capacity values. The working load of the lifting device must be observed. In accordance with the EN 474-5 for object handling application hose rupture valves on the boom and stick cylinders, an overload warning device and the lift capacity table in the cab are required. For object handling application the machine has to be supported on a level ground.



LIFTING CAPACITY

Height [ft]	Undercarriage outrigger	Reach [ft]				
		15	20	25	30	35
35	not supported		(12,640°)			
	4-point supported		12,640° (12,640°)			
30	not supported		(13,910)	(9,710)		
	4-point supported		14,050° (14,050°)	12,580° (12,580°)		
25	not supported		(13,830)	(9,710)	(7,210)	
	4-point supported		14,160° (14,160°)	12,900° (12,900°)	11,040 (11,120°)	
20	not supported		(13,470)	(9,520)	(7,150)	
	4-point supported		15,170° (15,170°)	13,390° (13,390°)	10,970 (12,140°)	
15	not supported	(20,120)	(12,860)	(9,200)	(6,980)	(5,490)
	4-point supported	21,430° (21,430°)	16,940° (16,940°)	14,280° (14,300°)	10,790 (12,560°)	8,520 (10,150°)
10	not supported	(18,430)	(12,110)	(8,800)	(6,770)	(5,390)
	4-point supported	26,120° (26,120°)	19,080° (19,080°)	13,840 (15,400°)	10,560 (13,100°)	8,420 (10,440)
5	not supported	(17,020)	(11,420)	(8,430)	(6,580)	(5,290)
	4-point supported	21,490° (21,490°)	18,730 (20,880°)	13,430 (16,330°)	10,330 (12,910)	8,310 (10,330)
0	not supported	(15,390°)	(10,970)	(8,150)	(6,400)	(5,230)
	4-point supported	15,390° (15,390°)	18,210 (21,630°)	13,120 (16,640)	10,160 (12,730)	8,250 (10,260)
-5	not supported		(10,790)	(8,020)	(6,340)	
	4-point supported		18,000 (20,990°)	12,940 (16,340°)	10,090 (16,340)	
Reach max. 36.1'						
6.9'	not supported					(4,950)
	4-point supported					7,760 (8,540°)

WORKING RANGE

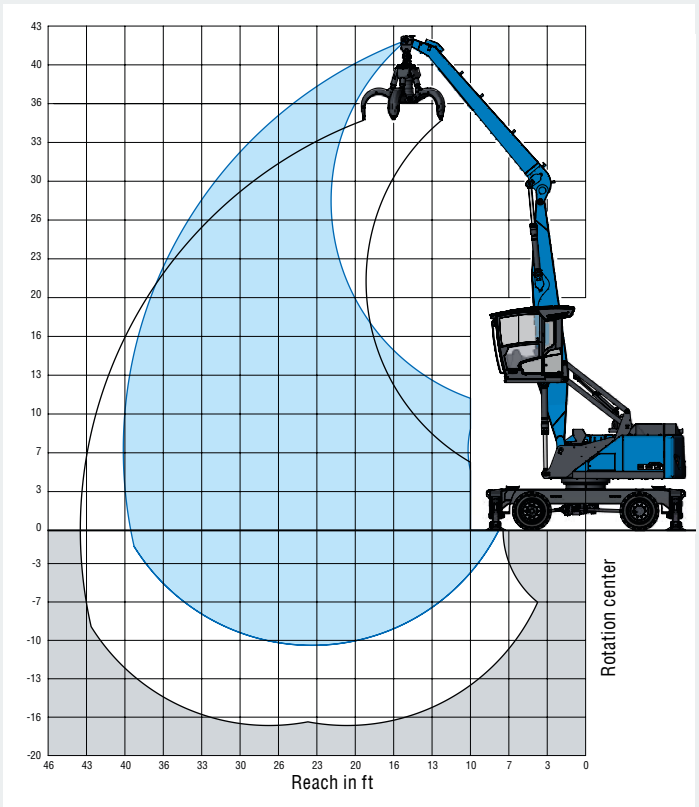
REACH 39'4" WITH DIPPERSTICK

Loading equipment	Boom 21.3'
	Dipperstick 17.9'
	Cactus grab 0.78 yd ³ open

RECOMMENDED ATTACHMENTS

Fuchs cactus grab 0.52 yd ³	Open or half-closed
Fuchs cactus grab 0.78 yd ³	Open or half-closed
Magnet plate	Fuchs magnet plate
Clamshell grab 1.31 yd ³	Density of materials handled up to 87.4 lbs/ft ³
Lift hook	22,046 lbs

The lift capacity values are stated in imperial pounds (lbs). The pump pressure is 5,221 psi. In accordance with ISO 10567 the lift capacity values represents 75% of the static tipping loads or 87% of the hydraulic lifting force (marked °). On solid and level ground the values apply to a swing range of 360°. The (...) values apply in the longitudinal direction of the undercarriage. The values for "not supported" only apply via the steering axle or the locked oscillating axle. The weights of the attached load hoisting equipment (grab, load hook, etc.) must be deducted from the lift capacity values. The working load of the lifting device must be observed. In accordance with the EN 474-5 for object handling application hose rupture valves on the boom and stick cylinders, an overload warning device and the lift capacity table in the cab are required. For object handling application the machine has to be supported on a level ground.



LIFTING CAPACITY

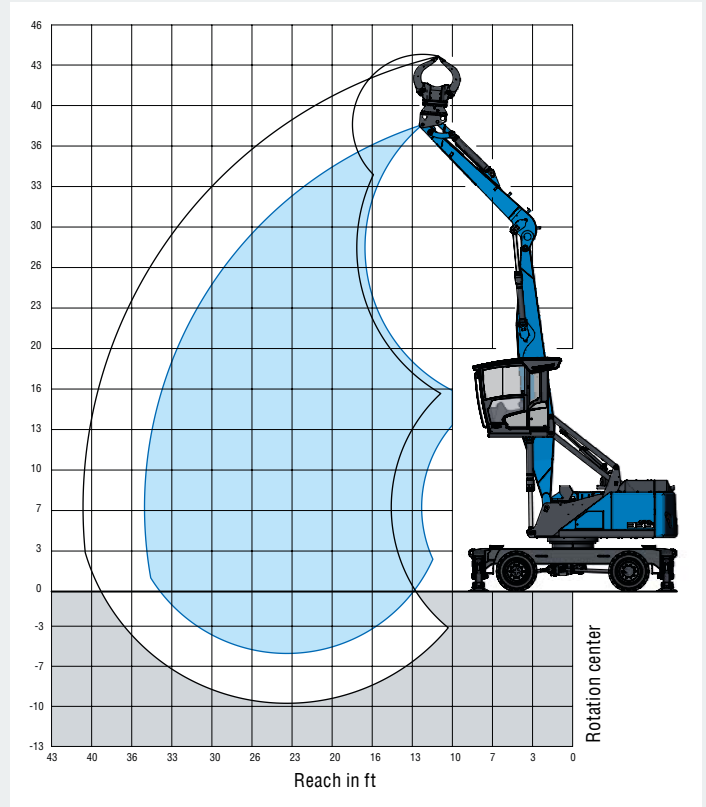
Height [ft]	Undercarriage outrigger	Reach [ft]					
		15	20	25	30	35	40
35	not supported			(9,750°)			
	4-point supported			9,750° (9,750°)			
30	not supported			(10,070)	(7,420)		
	4-point supported			11,330° (11,330°)	9,110° (9,110°)		
25	not supported			(10,030)	(7,440)	(5,690)	
	4-point supported			11,360° (11,360°)	10,770° (10,770°)	7,100° (7,100°)	
20	not supported			(9,820)	(7,330)	(5,670)	
	4-point supported			11,930° (11,930°)	11,040° (11,040°)	8,720° (9,840°)	
15	not supported		(13,400)	(9,470)	(7,130)	(5,560)	
	4-point supported		14,800° (14,800°)	12,930° (12,930°)	10,960° (11,580°)	8,620° (10,570°)	
10	not supported	(19,560)	(12,580)	(9,020)	(6,870)	(5,420)	(4,390)
	4-point supported	22,400° (22,400°)	17,140° (17,140°)	14,100° (14,190°)	10,680° (12,270°)	8,460° (10,490)	6,400° (6,400°)
5	not supported	(17,750)	(11,730)	(8,560)	(6,600)	(5,270)	(4,330)
	4-point supported	27,150° (27,150°)	19,110° (19,450°)	13,590° (15,430°)	10,390° (12,940°)	8,300° (10,330)	6,850° (6,870°)
0	not supported	(16,570)	(11,070)	(8,180)	(6,370)	(5,150)	
	4-point supported	19,980° (19,980°)	18,360° (21,000°)	13,170° (16,300°)	10,140° (12,720)	8,170° (10,190)	
-5	not supported	(16,080)	(10,700)	(7,930)	(6,220)	(5,080)	
	4-point supported	16,440° (16,440°)	17,930° (21,340°)	12,890° (16,410°)	9,980° (12,550)	8,090° (10,110)	
-10	not supported			(7,840)			
	4-point supported			12,790° (15,770°)			
Reach max. 39.4'							
6.9'	not supported					(4,320)	
	4-point supported					6,550° (6,550°)	

WORKING RANGE

REACH 35'1" WITH MULTI-PURPOSE STICK

Loading equipment	Boom 21.3'
	Dipperstick 13.1'
	Sorting grapple 0.59yd ³

The lift capacity values are stated in imperial pounds (lbs). The pump pressure is 5,221 psi. In accordance with ISO 10567 the lift capacity values represents 75% of the static tipping loads or 87% of the hydraulic lifting force (marked °). On solid and level ground the values apply to a swing range of 360°. The (...) values apply in the longitudinal direction of the undercarriage. The values for "not supported" only apply via the steering axle or the locked oscillating axle. The weights of the attached load hoisting equipment (grab, load hook, etc.) must be deducted from the lift capacity values. The working load of the lifting device must be observed. In accordance with the EN 474-5 for object handling application hose rupture valves on the boom and stick cylinders, an overload warning device and the lift capacity table in the cab are required. For object handling application the machine has to be supported on a level ground.



LIFTING CAPACITY

Height [ft]	Undercarriage outrigger	Reach [ft]				
		15	20	25	30	35
35	not supported		(11,060°)			
	4-point supported		11,060° (11,060°)			
30	not supported		(13,250)	(9,060)		
	4-point supported		14,220° (14,220°)	11,420° (11,420°)		
25	not supported		(13,170)	(9,100)	(6,600)	
	4-point supported		14,280° (14,280°)	12,790° (12,790°)	9,180° (9,180°)	
20	not supported	(18,470°)	(12,790)	(8,910)	(6,560)	
	4-point supported	18,470° (18,470°)	15,250° (15,250°)	13,220° (13,220°)	10,380° (11,840°)	
15	not supported	(18,170)	(12,150)	(8,580)	(6,410)	
	4-point supported	22,090° (22,090°)	16,950° (16,950°)	13,650° (14,060°)	10,210° (12,190°)	
10	not supported	(17,420)	(11,380)	(8,180)	(6,200)	(4,850)
	4-point supported	26,530° (26,530°)	18,760° (18,950°)	13,210° (15,050°)	9,990° (12,570)	7,880° (9,900)
5	not supported	(16,130)	(10,720)	(7,820)	(6,000)	(4,770)
	4-point supported	16,490° (16,490°)	18,010° (20,470°)	12,810° (15,830°)	9,770° (12,350)	7,790° (9,810)
0	not supported	(13,950°)	(10,330)	(7,570)	(5,870)	
	4-point supported	13,950° (13,950°)	17,550° (20,850°)	12,540° (16,030)	9,630° (12,190)	
-5	not supported			(7,470)		
	4-point supported			12,430° (15,340°)		
Reach max. 35.1'						
6.9	not supported					(4,680)
	4-point supported					7,630° (8,950°)



WORKS FOR YOU.™

www.terex-fuchs.com

March 2018. Product specifications and prices are subject to change without notice or obligation. The photographs and/or drawings in this document are for illustrative purposes only. Refer to the appropriate Operator's Manual for instructions on the proper use of this equipment. Failure to follow the appropriate Operator's Manual when using our equipment or to otherwise act irresponsibly may result in serious injury or death. The only warranty applicable to our equipment is the standard written warranty applicable to the particular product and sale and Terex makes no other warranty, express or implied. © Terex Corporation 2018 · Terex, the Terex Crown design, Fuchs and Works For You are trademarks of Terex Corporation or its subsidiaries.

Terex® Deutschland GmbH | Industriestraße 3 | 76669 Bad Schönborn | Germany | Fon: +49 (0) 7253 84-0 | Fax: +49 (0) 7253 84-102 | info@terex-fuchs.com

