

MATERIAL HANDLER



Specifications

Operating Weight	60,627 - 63,934 lbs
Engine Output	171 hp
Reach	Up to 44.9 ft

Features

- With its long reach and high lifting capacities, the MHL340 D from Terex® Fuchs is among the top performers in recycling and scrap material handling.
- Purpose built design provides comfort and reliability in the most challenging of situations.
- Powerful 171 hp turbo diesel engine and high-performance dual-circuit hydraulic system enables efficient and precise working maneuvers.
- MHL340 D can be efficiently operated from within the hydraulically height adjustable cab; a large color display monitor and ergonomic controls help to ensure the operator remains in complete command of the situation at hand.

WORKS FOR YOU.™

SPECIFICATIONS

Engine

Manufacturer, mode	Deutz TCD 2012 L06 2V
Design	6-cylinder inline
Engine control	EMR III
Type	4-stroke diesel, direct common rail fuel injection, turbocharged with intercooling
Engine output	171 hp
Nominal speed	2000 rpm
Displacement	366.1 in ³
Cooling system	Liquid intercooling with temperature-controlled fan speed
Emission standards	EPA Tier III and COM III
Air filter design	Two-stage filter
Fuel tank capacity	98 US gal

Electrical System

Operating voltage	24 V
Batteries	2 x 12 V / 100 Ah / 760 A (in accordance with EN)
Lighting set	1 x H3 floodlight on upper carriage, 1 x H3 floodlight on cab floor, turn signal and rear side-marker lamps
Generator	13 kW or 17 kW DC generator with control, driven by V-belt direct from diesel engine

Travel Drive

Hydrostatic drive through infinitely variable axial piston motor, directly mounted travel brake valves, two-speed shift gear, all-wheel drive	
Travel speed	
1 st gear	3.1 mph
2 nd gear	12.4 mph
Gradeability	Maximum 45%
Turning radius	26.9 ft

Swing System

Ring gear	Internally toothed ball ring gear (double row)
Drive	3-stage planetary gear with integrated multi-disc brake
Upper carriage swing speed	Infinitely variable from 0 - 8 rpm
Pivot brake	Electrically operated

Undercarriage

Front Axle	Planetary drive axle with integrated drum brake, rigidly mounted, max. steering angle 27°
Rear Axle	Oscillating planetary drive rear axle with integrated drum brake and selectable oscillating axle lock
Stabilizers	4-point stabilizers
Tires	Solid rubber, elastic, 8-fold 10.00 - 20



Brake System

Service Brake	Hydraulic single-circuit braking system acting on all four wheel pairs
Parking Brake	Electrically operated disc brake at transmission, acting on both front and rear axle

Hydraulic System

LINDE mobile hydraulic system with load limit control and fuel-saving power demand control. Separate oil cooler, temperature-controlled fan speed. Hydraulic oil filter - filter elements integrated in the oil tank; maintenance interval: up to 3,000 operating hours. Central lubrication system. Optional tool/attachment filter system.

Max. Pump capacity	2 x 84.5 US gal/min
Max. Operating pressure	4,713/5,148 psi
Hydraulic oil tank	93.5 US gal

Operator's Cab

Elastically supported, infinitely variable hydraulically height-adjustable with max. eye level of 17.7 ft. Large windows for an excellent view, windshield with pull-down sunblind that slides under cab roof, sliding window in cab door, steering column height and tilt adjustable.

Heating	Infinitely variable hot water heating with 3-speed fan, 4 adjustable defroster nozzles.
Operator's seat:	Air-cushioned comfort-seat with integrated headrest, safety belt and lumbar support, seat heating with integrated a/c function optional. Seat position, seat inclination and relation of seat to armrests and pilot controls are multi-adjustable, allowing low fatigue operation.
Monitoring:	Ergonomic instrument layout, glare-resistant function monitoring; automatic monitoring, warning and storage of deviating operating conditions, e.g. filter pressure with warning indicator and shutdown of pilot controls, warning indicator or shutdown of pilot controls if hydraulic oil temperature limits are exceeded. Diagnosis of individual sensors possible via the multi-function display.
Air conditioning	Automatic
Sound power level (guaranteed) in accordance with guideline 2000/14 EC	$L_{W(A)} = 101 \text{ dB(A)}$

Safety Installations

For crane operations in accordance with EN 474-5.
Cab protection by close proximity range limiter.

Official Homologation

Certification in accordance with CE regulations.
--

EQUIPMENT

MHL340 D

Engine	Series	Option
Exhaust gas turbocharger	●	
Intercooling	●	
Direct electronic fuel injection/ Common Rail	●	
Automatic idle	●	
Interface for engine diagnosis	●	
Temperature-controlled fan drive	●	

Undercarriage	Series	Option
2-speed power-shift transmission	●	
4-point stabilizers	●	
4-point stabilizers, individually controllable		●
Stabilizer cylinders with integrated two-way check valves	●	
All-wheel drive	●	
Piston rod protection on stabilizer cylinders	●	
Stabilizer plates 19.7 x 13.8 in	●	
Rear axle oscillating lock	●	
Blade in addition to 4-point stabilizers		●
Special paint		●
Drum brakes	●	
Tool box	●	

Uppercarriage	Series	Option
Electric refuelling pump		●
Lighting protection		●
Maintenance hood, actuated by gas strut, with mechanical locking device	●	
Lockable cleaning access openings on radiators	●	
Separate radiator system for ambient temperatures up to 122° F (50° C)	●	
Separate oil cooler with temperature-controlled fan drive	●	
Automatic central lubrication system	●	
Special paint		●
Quick-drain valve for fuel tank (delivered in tool box)	●	
Quick-drain valve on hydraulic oil tank	●	
Quick-drain valve on radiator	●	
Quick-drain valve on engine oil-pan	●	
Reversible fan for radiator and hydraulic oil cooler		●

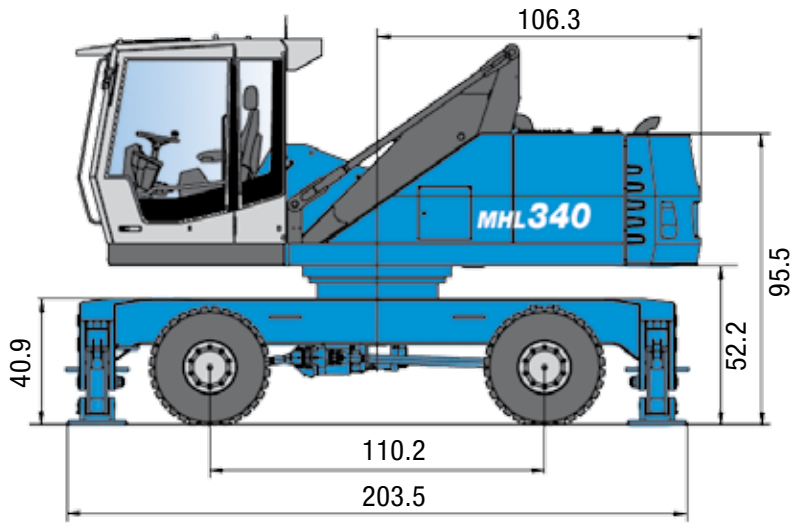
Cab	Series	Option
Lift-up skylight in cabin roof	●	
Document clip	●	
Air cushioned operator's seat with headrest, safety belt and lumbar support	●	
FOPS protective grating (roof)		●
Front/roof protective grating		●
Hinged front windshield	●	
LEXAN front window glass		●
High strength glass, front and top		●
Cab elevation system	●	
Air conditioning	●	
Steering column, height and tilt adjustable	●	
Multi-function color display	●	
Fire extinguisher, dry powder		●
Radio / CD player	●	
Rotating beacon	●	
Sliding window in cab door	●	
Safety glass	●	
Seat heating with integrated a/c function		●
Windscreen washer system	●	

Equipment	Series	Option
Floodlights attached to cab floor	●	
Floodlights, mounted to superstructure	●	
Floodlight, stick mounted left	●	
Ball valves on stick		●
Close proximity range limiter for stick	●	
Coolant and hydraulic oil level monitoring system	●	
Hose rupture protection for lifting cylinders	●	
Hose rupture protection for stick cylinders	●	
Stick shock protection	●	
Lubrication of the grab suspension by central lubrication system	●	
Overload warning / shutdown		●
XENON floodlight on stick		●
XENON floodlight on superstructure		●
XENON floodlight on cab roof		●
Filter system for attachments		●

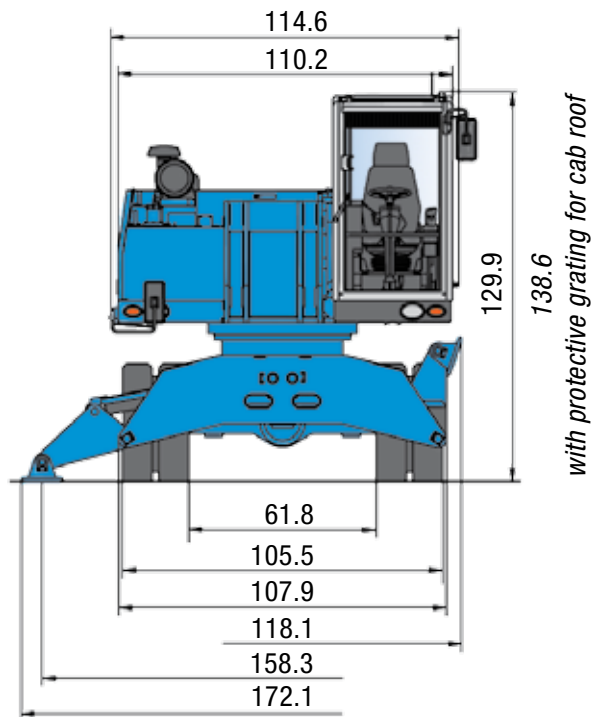


WORKS FOR YOU.™

DIMENSIONS

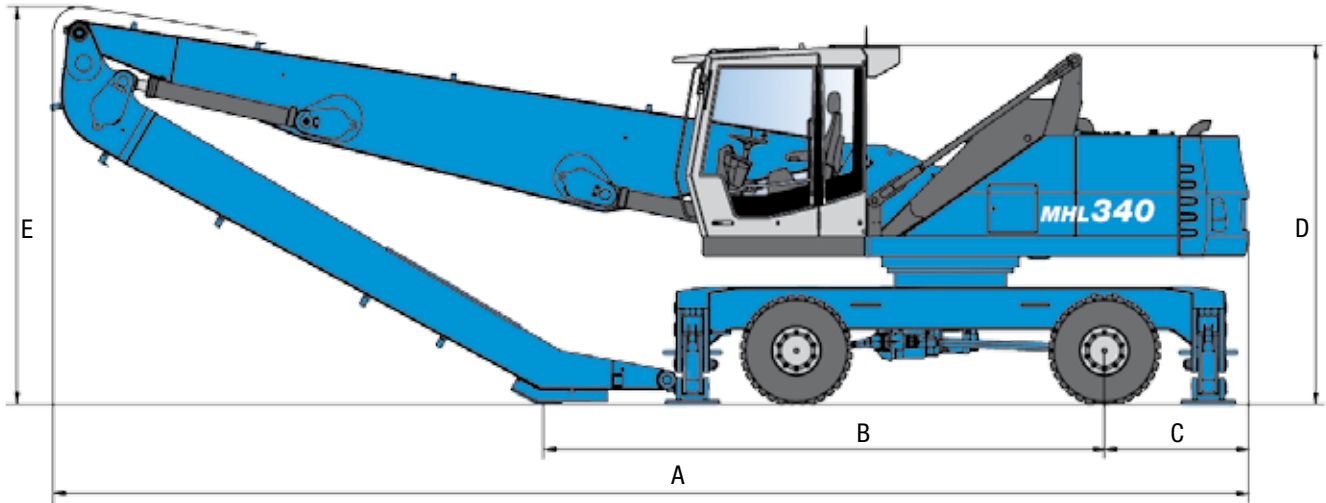


Dimensions (in)



TRANSPORT DIMENSIONS

MHL340 D



Dimensions	Reach 40.0 ft <i>with multi-purpose stick</i>	Reach 41.3 ft	Reach 44.9 ft
A	433.1 in	430.5 in	427.6 in
B	226.4 in	231.5 in	194.9 in
C	51.6 in	51.6 in	51.6 in
D	129.9 in / 138.6 in*	129.9 in / 138.6 in*	129.9 in / 138.6 in*
E	122.0 in	128.0 in	141.7 in

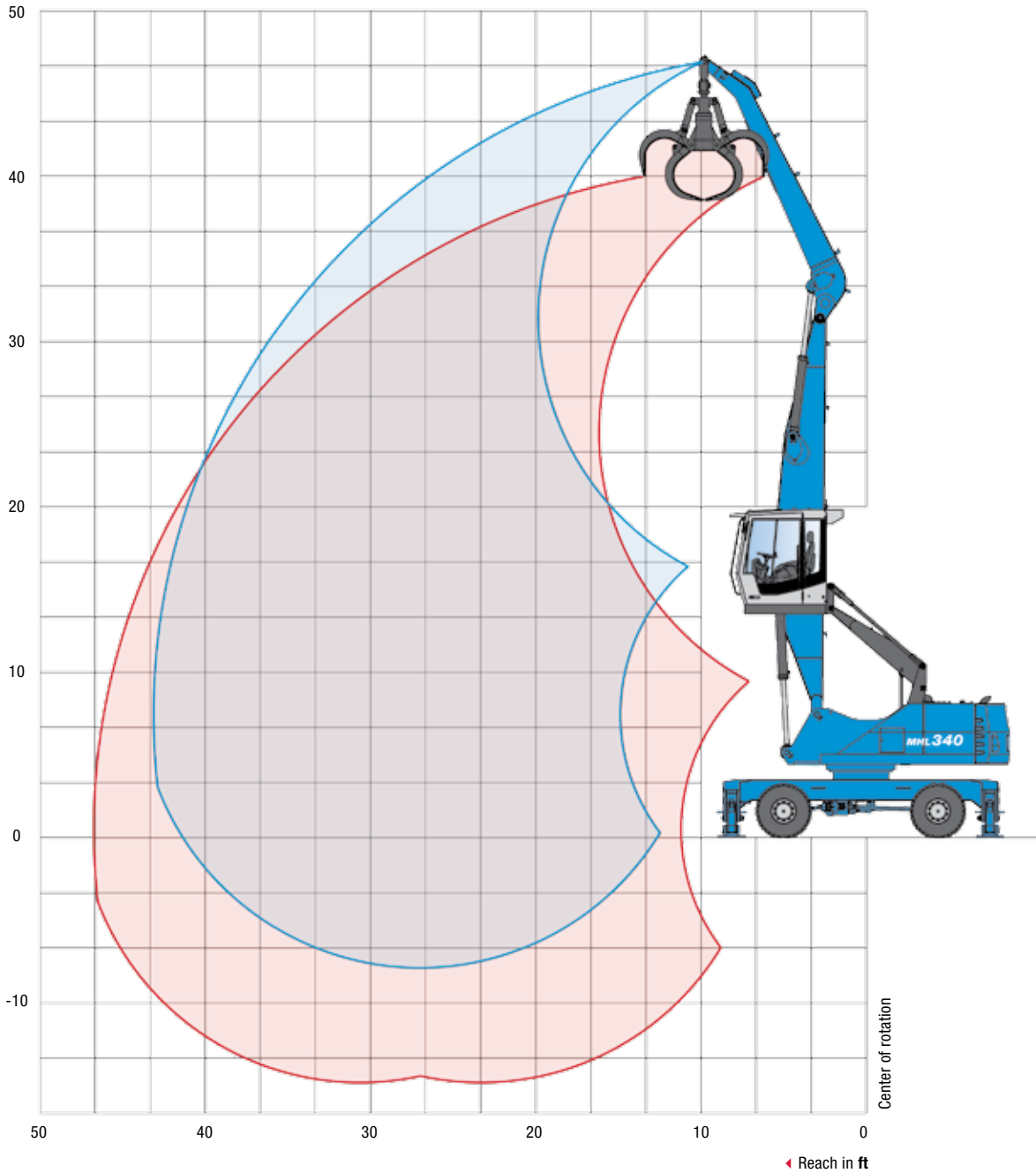
* with protective grating for cab roof

WORKS FOR YOU.™

WORKING RANGES/LIFTING CAPACITIES

Reach 41.3 ft

Work equipment:
Box-type boom 23.6 ft
Stick 16.7 ft
Cactus grab



WORKING RANGES/LIFTING CAPACITIES

MHL340 D

HEIGHT ft	UNDERCARRIAGE STABILIZERS	REACH ft					
		15	20	25	30	35	40
45	non supported	(15,990*)					
	4-pt. supported	15,990* (15,990*)					
40	non supported		(16,070)	(10,900)			
	4-pt. supported		17,090* (17,090*)	11,800* (11,800*)			
35	non supported		(16,490)	(11,360)	(8,190)		
	4-pt. supported		19,440* (19,440*)	16,830* (16,830*)	11,970* (11,970*)		
30	non supported		(16,520)	(11,420)	(8,340)	(6,230)	
	4-pt. supported		19,430* (19,430*)	16,600* (16,600*)	12,690 (14,590*)	9,660 (9,810*)	
25	non supported		(16,200)	(11,230)	(8,260)	(6,270)	
	4-pt. supported		19,950* (19,950*)	16,870* (16,870*)	12,600 (16,640*)	9,710 (12,010)	
20	non supported		(15,500)	(10,810)	(8,020)	(6,160)	(4,810)
	4-pt. supported		21,170* (21,170*)	16,610 (17,480*)	12,340 (14,900*)	9,590 (11,880)	7,650 (9,470*)
15	non supported	(22,770)	(14,430)	(10,220)	(7,680)	(5,970)	(4,750)
	4-pt. supported	30,900* (30,900*)	22,870* (22,870*)	15,950 (18,280*)	11,970 (14,900*)	9,390 (11,670)	7,580 (9,440)
10	non supported	(19,980)	(13,180)	(9,540)	(7,290)	(5,750)	(4,640)
	4-pt. supported	34,610* (34,610*)	21,490 (24,410*)	15,200 (18,940*)	11,540 (14,450)	9,150 (11,420)	7,470 (9,320)
5	non supported	(13,580*)	(12,090)	(8,930)	(6,920)	(5,530)	(4,530)
	4-pt. supported	13,580* (13,580*)	20,250 (24,820*)	14,520 (18,480)	11,150 (14,040)	8,920 (11,180)	7,350 (9,200)
0	non supported	(11,670*)	(11,420)	(8,490)	(6,640)	(5,370)	(4,470)
	4-pt. supported	11,670* (11,670*)	19,480 (23,430*)	14,030 (17,960*)	10,850 (13,720)	8,750 (11,000)	7,280 (8,750*)
-5	non supported		(11,150)	(8,260)	(6,490)	(5,300)	
	4-pt. supported		19,170 (20,180*)	13,780 (16,140*)	10,680 (12,860*)	8,660 (9,970*)	

Recommended Attachments*

Lift hook	22,046 lbs
Terex® Fuchs Cactus Grab 0.78 yd ³	Open or half-closed tines
Terex® Fuchs Cactus Grab 1.0 yd ³	Open or half-closed tines
Terex® Fuchs Magnetic Plate MP 1350	Diameter = 53.1 in with magnet system 13/17 kW
Clamshell Grab 1.31 yd ³	Loose goods density up to 2,360 lb/yd ³
Clamshell Grab 1.8 yd ³	Loose goods density up to 1,348 lb/yd ³

*May vary depending on material being handled and operating conditions.

Capacity values are stated in lbs. The pump pressure is 5,149 psi. The values, in accordance with ISO 10567, amount to 75% of the static tipping load or 87% of the hydraulic lifting force (marked*). They apply to slewing operations through 360° on a firm and level surface.

Values in parenthesis apply to the longitudinal direction of the undercarriage. "Non-supported" values only apply when the load is hoisted above the front or rear axle.

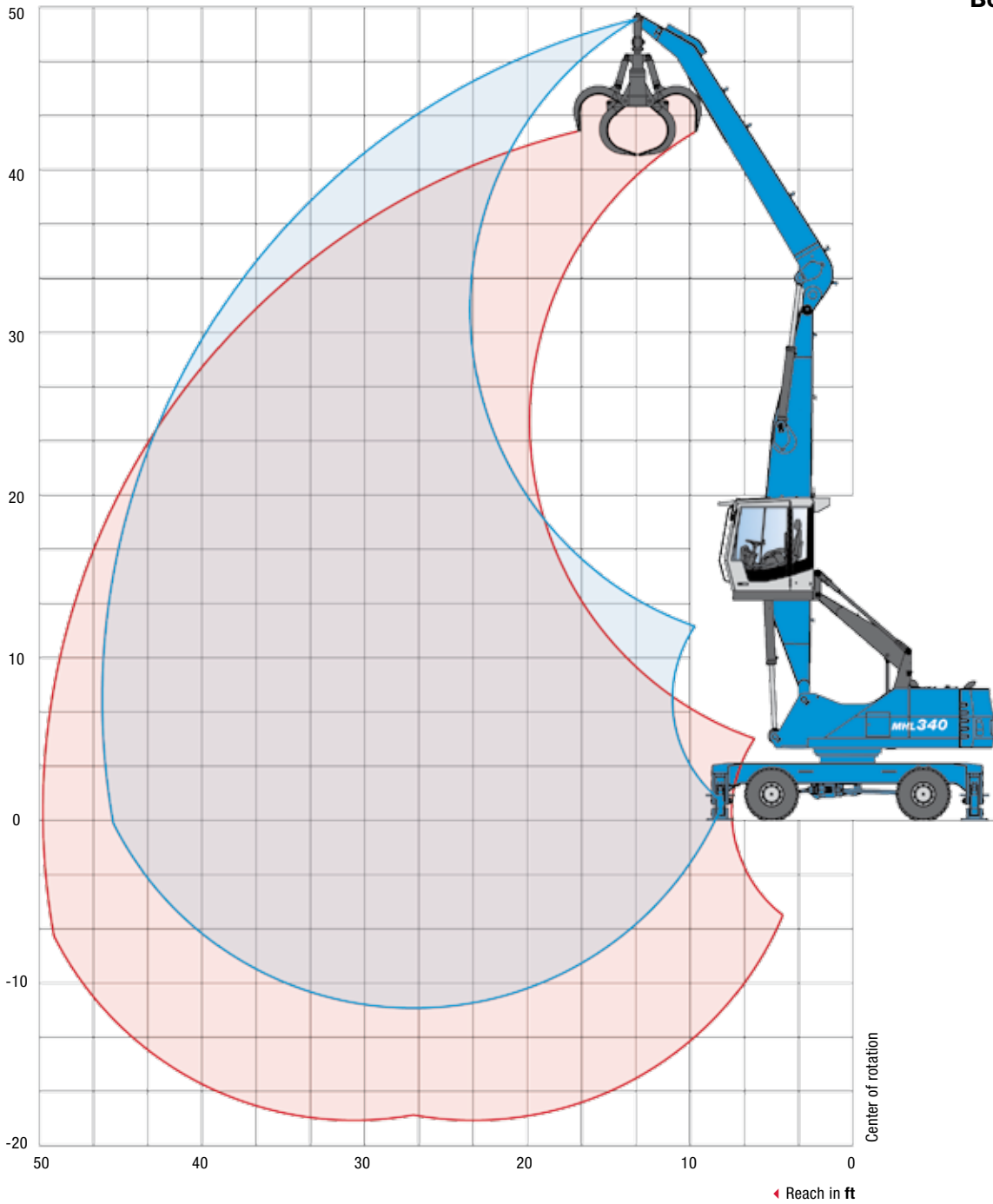
The weight of the attached hoisting equipment (grab, magnet, coupler, lift hook etc.) must be deducted from the capacity values. In accordance with CE guidelines, hose-rupture protection valves on the lift cylinders and an overload warning device are required for crane operations.

WORKS FOR YOU.™

WORKING RANGES/LIFTING CAPACITIES

Reach 44.9 ft

Work equipment:
Box-type boom 23.6 ft
Stick 20.3 ft
Cactus grab



HEIGHT ft	UNDERCARRIAGE STABILIZERS	REACH ft						
		15	20	25	30	35	40	45
45	non supported		(11,380*)					
	4-pt. supported		11,380* (11,380*)					
40	non supported			(11,550)	(7,570*)			
	4-pt. supported			11,870* (11,870*)	7,570* (7,570*)			
35	non supported			(11,850)	(8,560)	(6,290)		
	4-pt. supported			14,140* (14,140*)	11,610* (11,610*)	6,930* (6,930*)		
30	non supported			(11,880)	(8,620)	(6,440)		
	4-pt. supported			15,100* (15,100*)	13,030 (13,430*)	9,910 (10,690*)		
25	non supported			(11,680)	(8,500)	(6,400)	(4,880)	
	4-pt. supported			15,400* (15,400*)	12,900 (13,570*)	9,880 (12,070*)	7,754 (8,390*)	
20	non supported		(16,380)	(11,260)	(8,240)	(6,250)	(4,830)	
	4-pt. supported		18,990* (18,990*)	16,080* (16,080*)	12,610 (13,920*)	9,710 (12,020)	7,690 (9,570)	
15	non supported		(15,320)	(10,630)	(7,850)	(6,010)	(4,700)	(3,710)
	4-pt. supported		20,820* (20,820*)	16,450 (17,030*)	12,190 (14,400*)	9,460 (11,760)	7,550 (9,430)	5,360* (5,360*)
10	non supported	(21,870)	(13,920)	(9,860)	(7,380)	(5,730)	(4,540)	(3,650)
	4-pt. supported	31,570* (31,570*)	22,400 (22,850*)	15,590 (18,000*)	11,690 (14,620*)	9,150 (11,440)	7,380 (9,250)	6,070 (6,820*)
5	non supported	(18,900)	(12,520)	(9,080)	(6,920)	(5,440)	(4,370)	(3,580)
	4-pt. supported	33,620 (34,560*)	20,800 (24,200*)	14,730 (18,600*)	11,180 (14,090)	8,850 (11,120)	7,200 (9,070)	6,000 (7,170*)
0	non supported	(16,540*)	(11,470)	(8,440)	(6,520)	(5,200)	(4,230)	(3,530)
	4-pt. supported	16,540* (16,540*)	19,590 (24,100*)	14,030 (17,980)	10,750 (13,640)	8,590 (10,850)	7,060 (8,910)	5,960 (6,140*)
-5	non supported	(14,500*)	(10,880)	(8,030)	(6,250)	(5,030)	(4,150)	
	4-pt. supported	14,500* (14,500*)	18,910 (22,230*)	13,570 (17,260*)	10,450 (13,330)	8,400 (10,660)	6,970 (8,430*)	
-10	non supported		(10,670)	(7,840)	(6,120)			
	4-pt. supported		18,630* (18,630*)	13,360 (14,840*)	10,300 (11,790*)			

Recommended Attachments*

Lift hook	22,046 lbs
Terex® Fuchs Cactus Grab 0.52 yd ³	Open or half-closed tines
Terex® Fuchs Cactus Grab 0.78 yd ³	Open or half-closed tines
Terex® Fuchs Magnetic Plate MP 1250	Diameter = 49.2 in with magnet system 13/17 kW
Clamshell Grab 0.85 yd ³	Loose goods density up to 2,360 lb/yd ³
Clamshell Grab 1.31 yd ³	Loose goods density up to 1,348 lb/yd ³

*May vary depending on material being handled and operating conditions.

Capacity values are stated in lbs. The pump pressure is 5,149 psi. The values, in accordance with ISO 10567, amount to 75% of the static tipping load or 87% of the hydraulic lifting force (marked*). They apply to slewing operations through 360° on a firm and level surface.

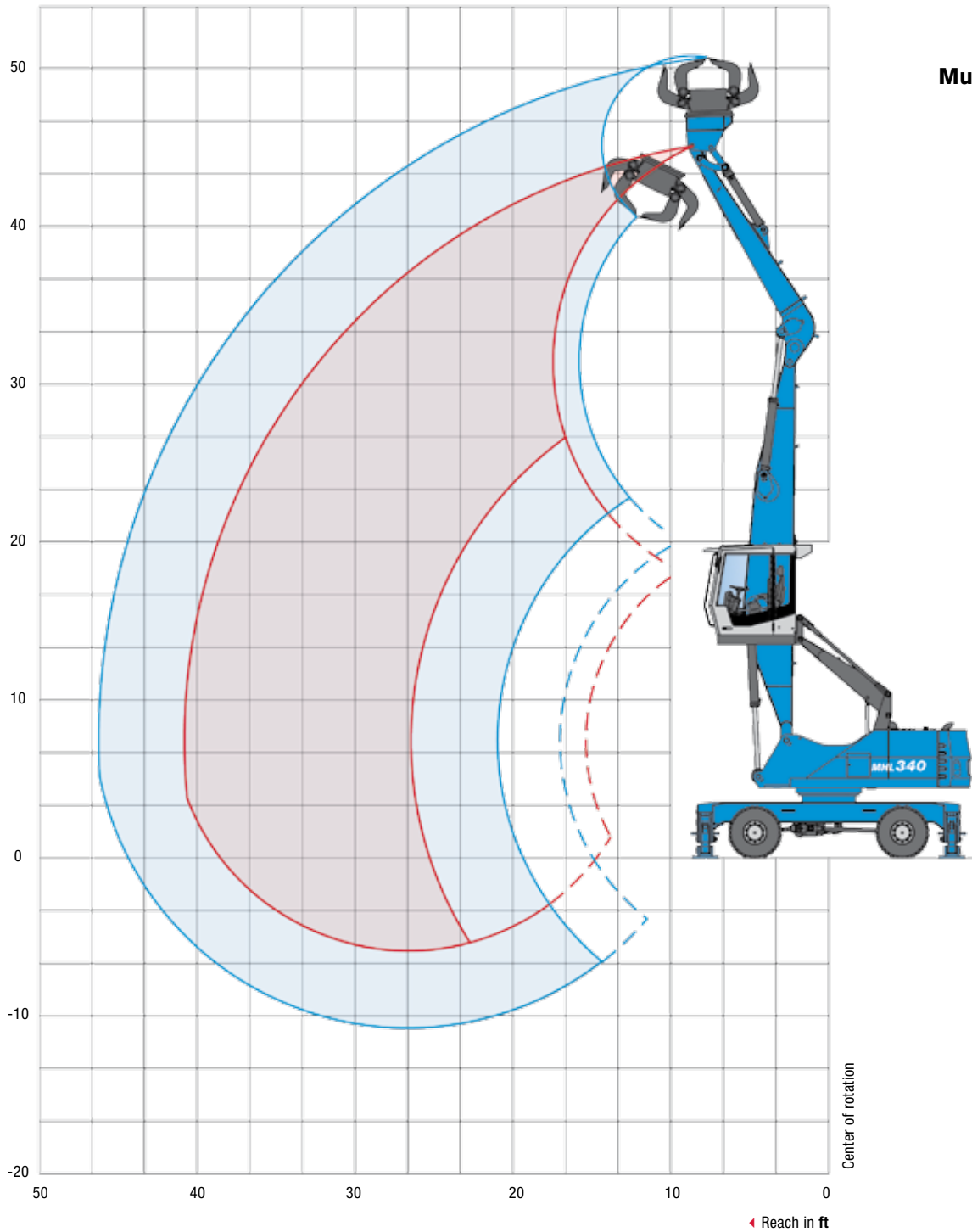
Values in parenthesis apply to the longitudinal direction of the undercarriage. "Non-supported" values only apply when the load is hoisted above the front or rear axle.

The weight of the attached hoisting equipment (grab, magnet, coupler, lift hook etc.) must be deducted from the capacity values. In accordance with CE guidelines, hose-rupture protection valves on the lift cylinders and an overload warning device are required for crane operations.

WORKING RANGES/LIFTING CAPACITIES

Reach 40.0 ft

Work equipment:
Box-type boom 23.6 ft
Multi-purpose stick 14.8 ft
Sorting grab



HEIGHT ft	UNDERCARRIAGE STABILIZERS	REACH ft					
		15	20	25	30	35	40
40	non supported		(14,280*)				
	4-pt. supported		14,280* (14,280*)				
35	non supported		(15,600)	(10,510)			
	4-pt. supported		18,360* (18,360*)	14,800* (14,800*)			
30	non supported		(15,650)	(10,620)	(7,570)		
	4-pt. supported		19,810* (19,810*)	16,460 (16,610*)	11,910 (14,040*)		
25	non supported		(15,280)	(10,430)	(7,520)	(5,550)	
	4-pt. supported		20,290* (20,290*)	16,250 (16,790*)	11,850 (14,320*)	8,980 (11,150*)	
20	non supported	(23,550)	(14,500)	(9,990)	(7,290)	(5,480)	
	4-pt. supported	27,120* (27,120*)	21,420* (21,420*)	15,760 (17,310*)	11,850 (14,320*)	8,900 (11,190)	
15	non supported	(21,090)	(13,360)	(9,380)	(6,940)	(5,300)	(4,100)
	4-pt. supported	31,850* (31,850*)	21,790 (22,890*)	15,080 (17,930*)	11,230 (14,150)	8,710 (10,990)	6,930 (7,160*)
10	non supported		(12,100)	(8,710)	(6,560)	(5,090)	(4,030)
	4-pt. supported		20,340 (23,960*)	14,340 (18,320*)	10,810 (13,720)	8,490 (10,760)	6,860 (8,710)
5	non supported		(11,100)	(8,130)	(6,220)	(4,900)	(3,960)
	4-pt. supported		19,200 (23,600*)	13,700 (17,650)	10,440 (13,330)	8,290 (10,550)	6,780 (8,390)
0	non supported	(8,940*)	(10,570)	(7,750)	(5,980)	(4,770)	
	4-pt. supported	8,940* (8,940*)	18,590 (21,330*)	13,280 (16,700*)	10,180 (13,050)	8,150 (10,210*)	
-5	non supported			(7,590)	(5,880)		
	4-pt. supported			13,110 (14,090*)	10,070 (11,080*)		

Capacity values are stated in lbs. The pump pressure is 5,149 psi. The values, in accordance with ISO 10567, amount to 75% of the static tipping load or 87% of the hydraulic lifting force (marked*). They apply to slewing operations through 360° on a firm and level surface.

Values in parenthesis apply to the longitudinal direction of the undercarriage. "Non-supported" values only apply when the load is hoisted above the front or rear axle.

The weight of the attached hoisting equipment (grab, magnet, coupler, lift hook etc.) must be deducted from the capacity values. In accordance with CE guidelines, hose-rupture protection valves on the lift cylinders and an overload warning device are required for crane operations.

terex.com

Effective Date: April 2010. Product specifications and prices are subject to change without notice or obligation. The photographs and/or drawings in this document are for illustrative purposes only. Refer to the appropriate Operator's Manual for instructions on the proper use of this equipment. Failure to follow the appropriate Operator's Manual when using our equipment or to otherwise act irresponsibly may result in serious injury or death. The only warranty applicable to our equipment is the standard written warranty applicable to the particular product and sale and Terex makes no other warranty, express or implied. Products and services listed may be trademarks, service marks, or trade names of Terex Corporation and/or its subsidiaries in the USA and other countries. All rights are reserved. Terex is a registered trademark of Terex Corporation in the USA and many other countries. © 2010 Terex Corporation.

8800 Rostin Road, Southaven, MS 38671 USA
1.888.90.TEREX (83739)



WORKS FOR YOU.™

MHL340D 0410 PN 127530