



US

Material Handler | F-Series

MHL 360



255 hp



max. 110,672 lbs



max. 60'



FUCHS®

A TEREX BRAND

TECHNICAL DATA

OPERATING WEIGHT WITHOUT ATTACHMENTS

| | |
|-------------|--------------------|
| MHL360 F | 99,868–107,584 lbs |
| MHL360 F HD | 98,987–110,671 lbs |

OPERATING WEIGHT WITHOUT ATTACHMENTS

| | |
|---------------------------|--|
| Manufacturer and model | Deutz TCD 7.8 L6 4V |
| Design | 6-cylinder inline |
| Control | EMR IV |
| Method of operation | 4-stroke diesel, common rail direct injection, turbocharger, controlled exhaust gas recirculation, diesel particulate filter with automatic regeneration and SCR-cat |
| Engine power | 255 hp (190 kW) |
| Rated speed | 2000 rpm |
| Displacement | 476 cui |
| Cooling system | Water and charge air cooling with temperature controlled fan speed |
| Exhaust emission standard | EPA Tier 4 final / EU Stage IV |
| Fuel tank | 153 gal Diesel |
| DEF / Urea tank | 13.2 gal Ad Blue |

ELECTRICAL SYSTEM

| | |
|--------------------|---|
| Generator | 28 V / 100 A |
| Operating voltage | 24 V |
| Battery | 2 × 12 V / 110 Ah / 750 A |
| Lighting set | 2 × LED headlamps, turn indicators and tail lights |
| Optional equipment | 20 kW or 30 kW DC generator with controls and insulation monitoring |

TRANSMISSION

Hydrostatic travel drive via infinitely variable axial piston motor with directly mounted travel brake valve, two-speed manual gearshift, 4-wheel drive

| | |
|-----------------------------------|--------------|
| Travel speed 1 st gear | max. 3.1 mph |
| Travel speed 2 nd gear | max. 9.3 mph |
| Gradeability | max. 30 % |
| Turning radius | 26'3" |

SWING DRIVE

| | |
|---------------------------|---|
| Slew ring | Internally geared, double-row ball turning ring |
| Drive | 3-stage planetary gear with integrated multi-disc brake |
| Uppercarriage swing speed | 0–6 rpm variable |
| Rotating interlock | Electrically operated |

UNDERCARRIAGES

| | MHL360 F | MHL360 F HD |
|------------|---|---|
| Front axle | Planetary drive axle with integrated drum brake, rigidly mounted, max. steering angle 27° | Planetary drive axle with integrated drum brake, rigidly mounted, max. steering angle 27° |
| Rear axle | Oscillating planetary drive rear axle with integrated drum brake and selectable oscillating axle lock | Oscillating planetary drive rear axle with integrated drum brake and selectable oscillating axle lock |
| Support | 4-point stabilizers | 4-point stabilizers |
| Tires | Solid rubber, 8-ply 12.00-24 | Solid rubber tires, 8-ply 12.00-24 Solid rubber tires, 4-ply 16.00-25 |

BRAKE SYSTEM

| | |
|---------------|---|
| Service brake | Hydraulic single-circuit braking system, acting on all wheels |
| Parking brake | Electrically operated disc brake on transmission, acting on both front and rear axles |

HYDRAULIC SYSTEM

| | |
|--------------------|---|
| Pump delivery rate | 2 × 74 gpm & 1 × 37 gpm (for swing operation) |
| Operating pressure | 4641 / 5221 psi |
| Hydraulic oil tank | 172.5 gal |

OPERATOR'S CAB

| | |
|-----------------|---|
| Cab | Infinitely variable hydraulically elevatable with max. eye level of 20' (option: independent forward movement of up to 7'3"). Sound-deadened, ample thermal panoramic glass windows, windshield with pulldown sunblind, viewing window on cab roof, sliding window in cab door, sliding door |
| Climate control | Automatic air-conditioning. Infinitely variable heating with 8-speed fan, 10 adjustable air nozzles, including 4 in the roof lining, 3 defroster nozzles |
| Operator's seat | Air-cushioned comfort-seat with integrated headrest, safety belt and lumbar support, seat heating with integrated A/C function optional. Comfortable operation with multi-purpose adjustment options for seat position, seat inclination, seat cushion placement in relation to armrests and pilot control units. Articulating armrests and joysticks |
| Monitoring | Ergonomic layout, anti-glare instrumentation. Multi-function display, automatic monitoring and recording of abnormal operating conditions (including all hydraulic oil filters, hydraulic oil temperature (cold/hot), coolant temperature and charge air temperature, diesel particulate filter load, visual and audible warning indication with shutdown of pilot controls/engine power reduction. Diagnosis of individual sensors possible via the multifunction display. Rear view camera and side view camera |
| Sound levels | Sound power level (ambience) L _{WA} 101.5 dB(A) (metered) acc. to directive 2000/14/EG L _{WA} 104 dB(A) (guaranteed) acc. to directive 2000/14/EG Sound pressure level (inside the cabin) acc. to directive ISO 6396 L _{PA} 70 dB(A) |

Certified in accordance with CE regulations

EQUIPMENT

DIESEL ENGINE

| | Standard | Option |
|--|----------|--------|
| Intercooler and coolant radiator | • | |
| Direct electronic fuel injection/common rail | • | |
| Advanced automatic idle incl. engine shut-off function | • | |
| Engine preheating | | • |
| Engine diagnostics interface | • | |
| Temperature-dependent fan drive | • | |

UNDERCARRIAGE

| | | |
|---|---|---|
| All-wheel drive with differential | • | |
| Drum brakes | • | |
| Rear axle oscillating lock | • | |
| 2-speed powershift transmission | | • |
| 4-point stabilizers | • | |
| Dozer blade in addition to 4-point stabilizers | | • |
| Stabilizer cylinders with integrated two-way check valves | • | |
| Piston rod protection on stabilizer cylinders | • | |
| Tool box | • | |
| Special paint (customer paint work) | | • |
| Solid rubber tires (10.00-20) with intermediate rings | • | |

UPPERCARRIAGE

| | | |
|---|---|---|
| Separate cooling systems (combi-cooler for engine and hydraulic oil cooler) | • | |
| Cooling system with temperature-dependent fan drive | • | |
| Fan drive reversing function | | • |
| Automatic central lubrication system | • | |
| Rear view camera | • | |
| Side view camera | • | |
| Travel alarm | | • |
| Electric refuelling pump | | • |
| Lighting protection | | • |
| Special paint (customer paint work) | | • |

CAB

| | Standard | Option |
|--|----------|--------|
| Hydraulically adjustable cab | • | |
| Cab system horizontally and vertically adjustable | | • |
| 3-layer glass with protection film | • | |
| Sliding window in cab door | • | |
| Reinforced glass (windscreen and roof panel) | | • |
| Reinforced glass (windscreen and roof panel) (FQC) | • | |

CAB (CONTINUED)

| | Standard | Option |
|---|----------|--------|
| Washer system (windshield) | • | |
| Roof washer system (skylight) | | • |
| Air-cushioned operator seat with headrest, seatbelt, and lumbar support | • | |
| Seat heating with integrated A/C function | | • |
| Joystick steering | • | |
| Steering column, height and tilt adjustable | | • |
| Automatic air conditioning system | • | |
| Independent heating system | | • |
| Multi-function display | • | |
| Document net | • | |
| Protective grilles to front and roof | | • |
| 12V transformer | | • |
| Radio USB & Bluetooth (EU & USA) | • | |
| 12V socket | | • |
| Fire extinguisher, dry powder | | • |
| Travel alarm w/ rotating beacon | | • |

OTHER EQUIPMENT

| | | |
|--|---|---|
| 13 kW DC generator with controls | | • |
| 17 kW DC generator with controls | | • |
| Close proximity range limiter for dipperstick | • | |
| Coolant and hydraulic oil level monitoring system | • | |
| Filter system for attachments | | • |
| Overload and working range monitoring | • | |
| Filter system for attachments (FQC) | • | |
| Hose rupture valve for boom cylinder | | • |
| Hose rupture valve for stick cylinder | | • |
| Overload warning device | | • |
| Quick coupling on dipperstick | • | |
| Dipperstick impact protection | | • |
| Active cyclone prefilter (TOP AIR) | | • |
| Hydraulic oil preheating | | • |
| Lubrication of the grab suspension by central lubrication system | • | |
| Light packages LED | | • |
| LED front headlights | • | |
| LED working lights cabin roof front | • | |
| Lifting cylinder w/ end position damping (piston accumulator) | | • |
| Fuchs Telematics System, incl. 2 years service | • | |

Further optional equipment available on request!





MHL
360

FUCHS

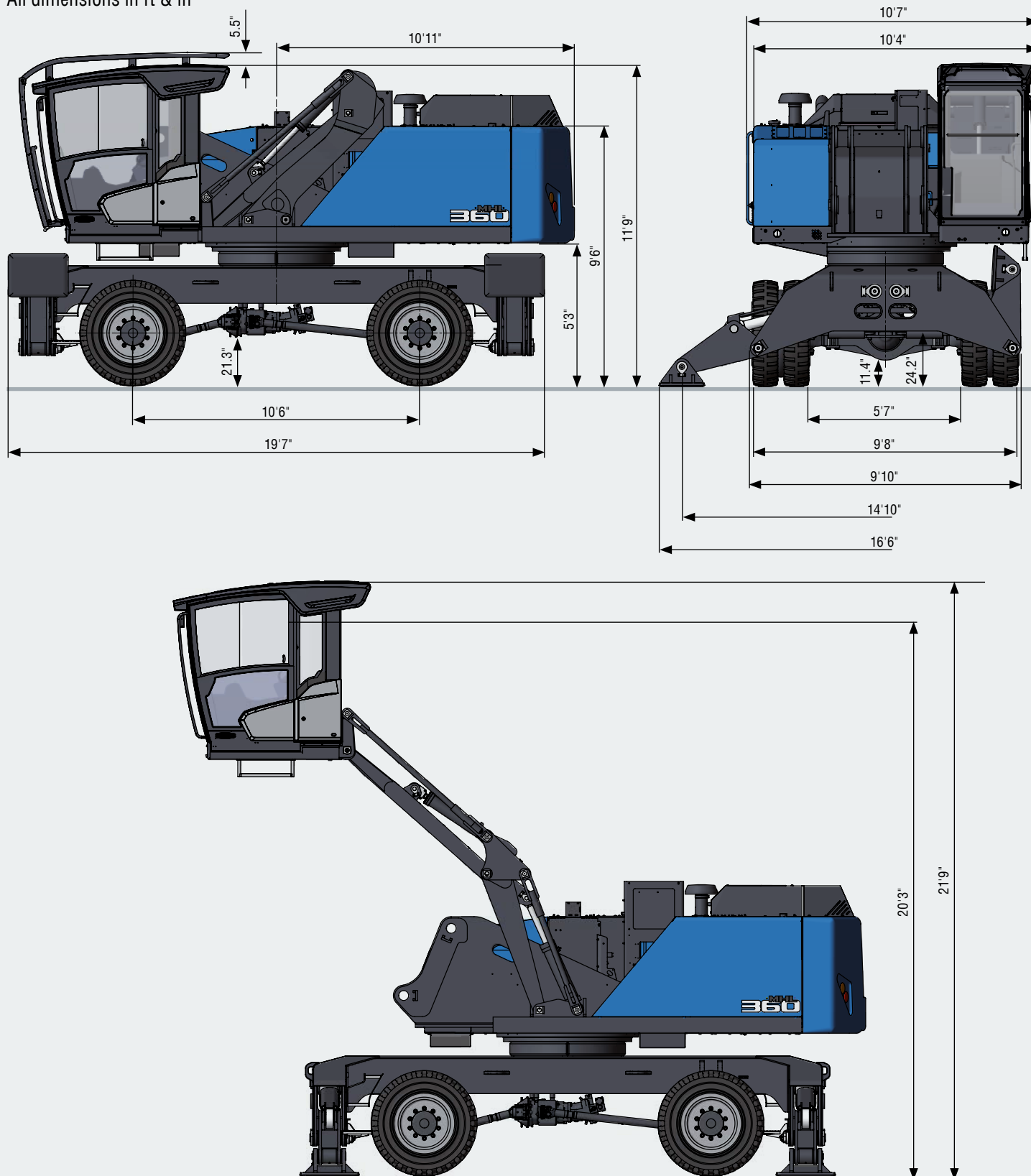


FUCHS
A TEREX BRAND

DIMENSIONS MHL360 F

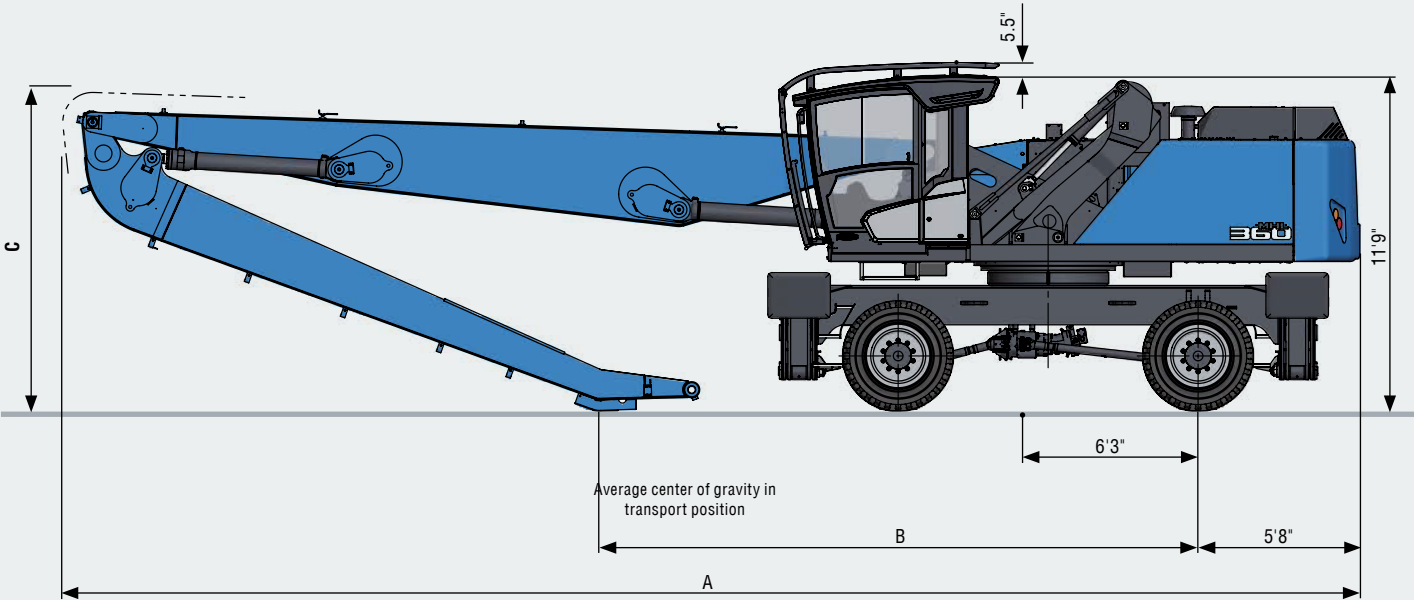
WITH VERTICALLY AND HORIZONTALLY ADJUSTABLE CABIN

All dimensions in ft & in



TRANSPORT DIMENSIONS MHL360 F

All dimensions in ft & in

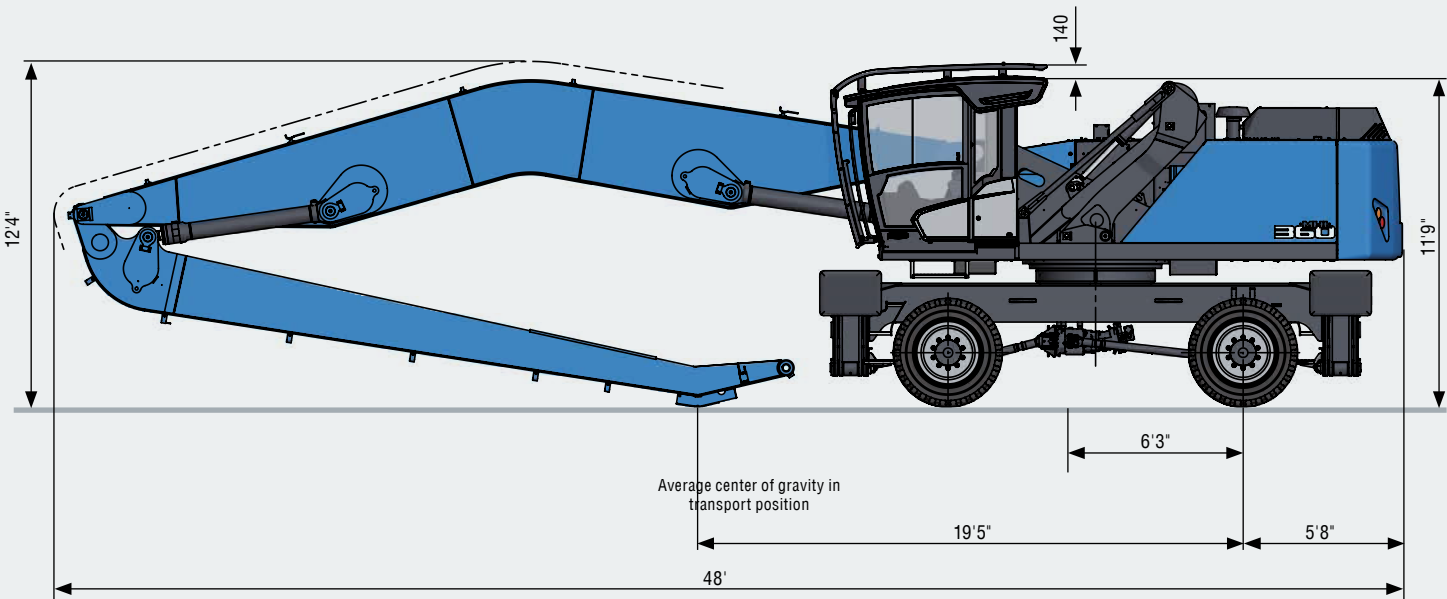


| Dimensions | Reach 54'2" | Reach 59' |
|------------|-------------|-----------|
| A | 45'4" | 48' |
| B | 20'11" | 21' |
| C | 11'2" | 12' |

WORK EQUIPMENT BANANA BOOM

All dimensions in ft & in

Reach 59'1"



WORKING RANGE

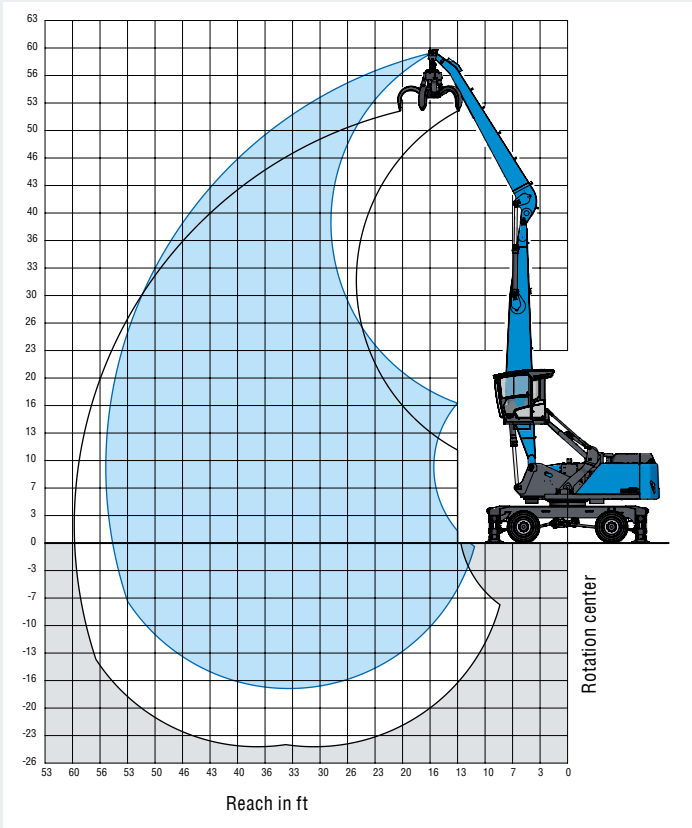
REACH 54'1" WITH DIPPERSTICK

| | |
|-------------------|---------------------------------|
| Loading equipment | Boom 29.2' |
| | Dipperstick 22.9' |
| | Multi-tine grapple 1.05yd³ open |

RECOMMENDED ATTACHMENTS

| | |
|----------------------------------|--|
| Fuchs multi-tine grapple 0.78yd³ | Open or half-closed |
| Fuchs multi-tine grapple 1.05yd³ | Open or half-closed |
| Fuchs magnetic plate MP 1350 | dia = 53" with 40 hp (30 kW) magnet system |
| Clamshell grab 1.83yd³ | Density of materials handled up to 99.9lbs/ft³ |
| Clamshell grab 2.62yd³ | Density of materials handled up to 49.9lbs/ft³ |
| Lift hook | 44,100 lbs |

The lift capacity values are stated in imperial pounds (lbs). The pump pressure is 5,221 psi. In accordance with ISO 10567 the lift capacity values represents 75% of the static tipping loads or 87% of the hydraulic lifting force (marked °). On solid and level ground the values apply to a swing range of 360°. The (...) values apply in the longitudinal direction of the undercarriage. The values for "not supported" only apply via the steering axle or the locked oscillating axle. The weights of the attached load hoisting equipment (grab, load hook, etc.) must be deducted from the lift capacity values. The working load of the lifting device must be observed. In accordance with the EN 474-5 for object handling application hose rupture valves on the boom and stick cylinders, an overload warning device and the lift capacity table in the cab are required. For object handling application the machine has to be supported on a level ground.



LIFTING CAPACITY

| Height [ft] | Undercarriage outrigger | Reach [ft] | | | | | | | | |
|------------------|----------------------------|-------------------|-------------------|-------------------|-------------------|-------------------|-------------------|-------------------|-------------------|-----------------|
| | | 15 | 20 | 25 | 30 | 35 | 40 | 45 | 50 | 55 |
| 50 | not supported | | | | (18,610°) | (12,970°) | | | | |
| | 4-point supported | | | | 18,610° (18,610°) | 12,970° (12,970°) | | | | |
| 45 | not supported | | | | (19,330) | (14,810) | (11,490) | | | |
| | 4-point supported | | | | 20,580° (20,580°) | 18,440° (18,440°) | 12,950° (12,950°) | | | |
| 40 | not supported | | | | (19,520) | (15,030) | (11,810) | (9,300) | | |
| | 4-point supported | | | | 20,250° (20,250°) | 18,170° (18,170°) | 16,500° (16,500°) | 11,090° (11,090°) | | |
| 35 | not supported | | | | (19,440) | (15,000) | (11,850) | (9,470) | | |
| | 4-point supported | | | | 20,320° (20,320°) | 18,170° (18,170°) | 16,420° (16,420°) | 14,320 (14,920°) | | |
| 30 | not supported | | | | (19,100) | (14,760) | (11,720) | (9,440) | (7,640) | |
| | 4-point supported | | | | 20,770° (20,770°) | 18,430° (18,430°) | 16,530° (16,530°) | 14,290 (14,910°) | 11,820 (12,390°) | |
| 25 | not supported | | | (24,840°) | (18,490) | (14,350) | (11,440) | (9,290) | (7,610) | |
| | 4-point supported | | | 24,840° (24,840°) | 21,560° (21,560°) | 18,890° (18,890°) | 16,770° (16,770°) | 14,120 (14,990°) | 11,780 (13,360°) | |
| 20 | not supported | | (32,660°) | (23,520) | (17,620) | (13,770) | (11,060) | (9,050) | (7,480) | |
| | 4-point supported | | 32,660° (32,660°) | 26,950° (26,950°) | 22,600° (22,600°) | 19,470° (19,470°) | 16,760 (17,060°) | 13,860 (15,090°) | 11,650 (13,320°) | |
| 15 | not supported | (37,480) | (30,610) | (21,820) | (19,580) | (13,090) | (10,610) | (8,750) | (7,300) | (6,130) |
| | 4-point supported | 52,920° (52,920°) | 37,480° (37,480°) | 28,940° (28,940°) | 23,670° (23,670°) | 20,000° (20,000°) | 16,280 (17,320°) | 13,550 (15,140°) | 11,460 (13,220°) | 9,800 (10,670°) |
| 10 | not supported | | (27,260) | (20,000) | (15,470) | (12,380) | (10,140) | (8,440) | (7,110) | (6,050) |
| | 4-point supported | | 40,630° (40,630°) | 30,520° (30,520°) | 24,150° (24,150°) | 19,220 (20,420°) | 15,770 (17,440°) | 13,220 (15,060°) | 11,260 (12,960°) | 9,710 (10,650°) |
| 5 | not supported | | (24,640) | (18,430) | (14,470) | (11,720) | (9,690) | (8,140) | (6,930) | (5,970) |
| | 4-point supported | | 27,020° (27,020°) | 29,970 (31,030°) | 23,050 (24,720°) | 18,510 (20,440°) | 15,300 (17,280°) | 12,910 (14,740°) | 11,070 (12,480°) | 9,630 (9,870°) |
| 0 | not supported | | (20,070°) | (17,340) | (13,700) | (11,180) | (9,320) | (7,900) | (6,780) | (5,930) |
| | 4-point supported | | 20,070° (20,070°) | 28,730 (30,120°) | 22,200 (24,150°) | 17,930 (19,920°) | 14,900 (16,710°) | 12,650 (14,080°) | 10,920 (11,640°) | 8,540° (8,540°) |
| -5 | not supported | | (19,780°) | (16,720) | (13,200) | (10,810) | (9,060) | (7,730) | (6,700) | |
| | 4-point supported | | 19,780° (19,780°) | 27,660° (27,660°) | 21,650 (22,610°) | 17,520 (18,710°) | 14,620 (15,610°) | 12,470 (12,940°) | 10,280° (10,280°) | |
| -10 | not supported | | (21,300°) | (16,480) | (12,960) | (10,610) | (8,920) | (7,660) | (6,720) | |
| | 4-point supported | | 21,300° (21,300°) | 24,080° (24,080°) | 20,050° (20,050°) | 16,700° (16,700°) | 13,820° (13,820°) | 11,140° (11,140°) | 8,120° (8,120°) | |
| -15 | not supported | | | (16,530) | (12,940) | (10,580) | (8,920) | | | |
| | 4-point supported | | | 19,160° (19,160°) | 16,410° (16,410°) | 13,740° (13,740°) | 11,150° (11,150°) | | | |
| Max. Reach 55.1' | | | | | | | | | | |
| -8.9 | not supported | | | | | | | | | (5,860) |
| | 4-point supported | | | | | | | | | 8,930° (8,930°) |

WORKING RANGE

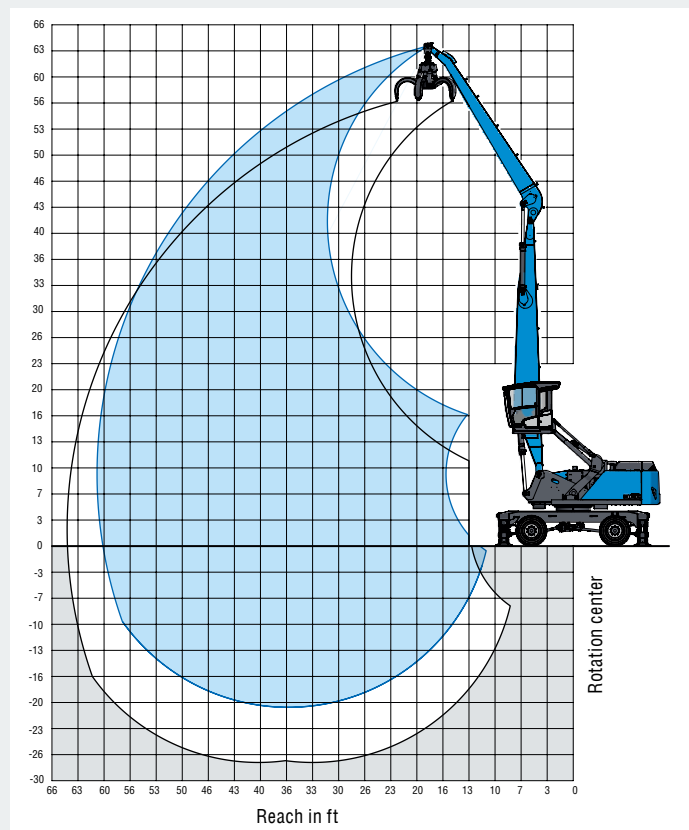
REACH 59' WITH DIPPERSTICK

| | |
|-------------------|---|
| Loading equipment | Boom 31.8' |
| | Dipperstick 25.6' |
| | Multi-tine grapple 1.05yd ³ open |

RECOMMENDED ATTACHMENTS

| | |
|--|---|
| Fuchs multi-tine grapple 0.78yd ³ | Open or half-closed |
| Fuchs multi-tine grapple 1.05yd ³ | Open or half-closed |
| Fuchs magnetic plate MP 1350 | dia = 53" with 40 hp (30 kW) magnet system |
| Clamshell grab 1.83yd ³ | Density of materials handled up to 99.9 lbs/ft ³ |
| Clamshell grab 2.62yd ³ | Density of materials handled up to 49.9 lbs/ft ³ |
| Lift hook | 44,100 lbs |

The lift capacity values are stated in imperial pounds (lbs). The pump pressure is 5,221 psi. In accordance with ISO 10567 the lift capacity values represents 75% of the static tipping loads or 87% of the hydraulic lifting force (marked *). On solid and level ground the values apply to a swing range of 360°. The (...) values apply in the longitudinal direction of the undercarriage. The values for "not supported" only apply via the steering axle or the locked oscillating axle. The weights of the attached load hoisting equipment (grab, load hock, etc.) must be deducted from the lift capacity values. The working load of the lifting device must be observed. In accordance with the EN 474-5 for object handling application hose rupture valves on the boom and stick cylinders, an overload warning device and the lift capacity table in the cab are required. For object handling application the machine has to be supported on a level ground.



LIFTING CAPACITY

| Height [ft] | Undercarriage outrigger | Reach [ft] | | | | | | | | | |
|----------------|-------------------------|-------------------|-------------------|-------------------|-------------------|-------------------|-------------------|-------------------|-------------------|-------------------|-----------------|
| | | 15 | 20 | 25 | 30 | 35 | 40 | 45 | 50 | 55 | 60 |
| 50 | not supported | | | | (19,580*) | (15,140) | (11,770) | | | | |
| | 4-point supported | | | | 19,580* (19,580*) | 17,380* (17,380*) | 13,880* (13,880*) | | | | |
| 45 | not supported | | | | | (15,410) | (12,090) | (9,550) | | | |
| | 4-point supported | | | | | 17,080* (17,080*) | 15,440* (15,440*) | 13,140* (13,140*) | | | |
| 40 | not supported | | | | | (15,460) | (12,170) | (9,710) | (7,740) | | |
| | 4-point supported | | | | | 17,000* (17,000*) | 15,340* (15,340*) | 13,940* (13,940*) | 11,380* (11,380*) | | |
| 35 | not supported | | | | | (15,300) | (12,080) | (9,690) | (7,810) | | |
| | 4-point supported | | | | | 17,140* (17,140*) | 15,400* (15,400*) | 13,930* (13,930*) | 12,050* (12,640*) | | |
| 30 | not supported | | | | (19,390) | (14,950) | (11,840) | (9,530) | (7,750) | (6,300) | |
| | 4-point supported | | | | 19,850* (19,850*) | 17,480* (17,480*) | 15,590* (15,590*) | 14,020* (14,020*) | 11,990* (12,650*) | 10,020* (11,320*) | |
| 25 | not supported | | | | (18,630) | (14,410) | (11,460) | (9,280) | (7,600) | (6,250) | |
| | 4-point supported | | | | 20,670* (20,670*) | 17,980* (17,980*) | 15,880* (15,880*) | 14,160* (14,160*) | 11,820* (12,680*) | 9,960* (11,300*) | |
| 20 | not supported | | | (23,580) | (17,600) | (13,710) | (10,970) | (8,950) | (7,380) | (6,120) | |
| | 4-point supported | | | 26,060* (26,060*) | 21,690* (21,690*) | 18,570* (18,570*) | 16,210* (16,210*) | 13,820* (14,320*) | 11,590* (12,710*) | 9,830* (11,240*) | |
| 15 | not supported | (37,480) | (30,380) | (21,610) | (16,380) | (12,900) | (10,420) | (8,560) | (7,120) | (5,960) | (5,010) |
| | 4-point supported | 48,510* (48,510*) | 36,400* (36,400*) | 27,930* (27,930*) | 22,710* (22,710*) | 19,140* (19,140*) | 16,140* (16,500*) | 13,410* (14,430*) | 11,320* (12,690*) | 9,670* (11,100*) | 8,320* (9,330*) |
| 10 | not supported | | (26,550) | (19,520) | (15,090) | (12,050) | (9,840) | (8,160) | (6,850) | (5,790) | (4,920) |
| | 4-point supported | | 39,210* (39,210*) | 29,370* (29,370*) | 23,480* (23,480*) | 18,950* (19,530*) | 15,530* (16,660*) | 12,990* (14,420*) | 11,030* (12,560*) | 9,480* (10,860*) | 8,230* (8,950*) |
| 5 | not supported | | (20,210*) | (17,700) | (13,920) | (11,270) | (9,300) | (7,780) | (6,590) | (5,620) | (4,850) |
| | 4-point supported | | 20,210* (20,210*) | 29,270* (29,800*) | 22,540* (23,710*) | 18,100* (18,590*) | 14,940* (16,580*) | 12,590* (14,230*) | 10,760* (12,260*) | 9,310* (10,440*) | 8,150* (8,320*) |
| 0 | not supported | | (15,350*) | (16,410) | (13,010) | (10,610) | (8,830) | (7,460) | (6,360) | (5,490) | (4,800) |
| | 4-point supported | | 15,350* (15,350*) | 27,820* (28,960*) | 21,530* (23,220*) | 17,400* (19,180*) | 14,450* (16,160*) | 12,240* (13,760*) | 10,530* (11,720*) | 9,170* (9,760*) | 7,310* (7,310*) |
| -5 | not supported | | (15,290*) | (15,660) | (12,390) | (10,140) | (8,480) | (7,210) | (6,200) | (5,400) | |
| | 4-point supported | | 15,290* (15,290*) | 26,860* (26,860*) | 20,850* (21,900*) | 16,880* (18,190*) | 14,070* (15,310*) | 11,970* (12,940*) | 10,350* (10,840*) | 8,730* (8,730*) | |
| -10 | not supported | | (16,580*) | (15,320) | (12,050) | (9,850) | (8,260) | (7,050) | (6,110) | (5,390) | |
| | 4-point supported | | 16,580* (16,580*) | 23,660* (23,660*) | 19,750* (19,750*) | 16,570* (16,570*) | 13,840* (13,840*) | 11,660* (11,660*) | 9,520* (9,520*) | 7,150* (7,150*) | |
| -15 | not supported | | (15,290) | (11,940) | | (9,740) | (8,170) | (7,010) | (6,120) | | |
| | 4-point supported | | | 19,470* (19,470*) | 16,740* (16,740*) | 14,220* (14,220*) | 11,940* (11,940*) | 9,800* (9,800*) | 7,580* (7,580*) | | |
| -20 | not supported | | | | | (9,800) | (8,230) | | | | |
| | 4-point supported | | | | | 11,080* (11,080*) | 9,200* (9,200*) | | | | |
| Max. Reach 60' | | | | | | | | | | | |
| -8.9 | not supported | | | | | | | | | (4,770) | |
| | 4-point supported | | | | | | | | | 8,020* (8,390*) | |

WORKING RANGE

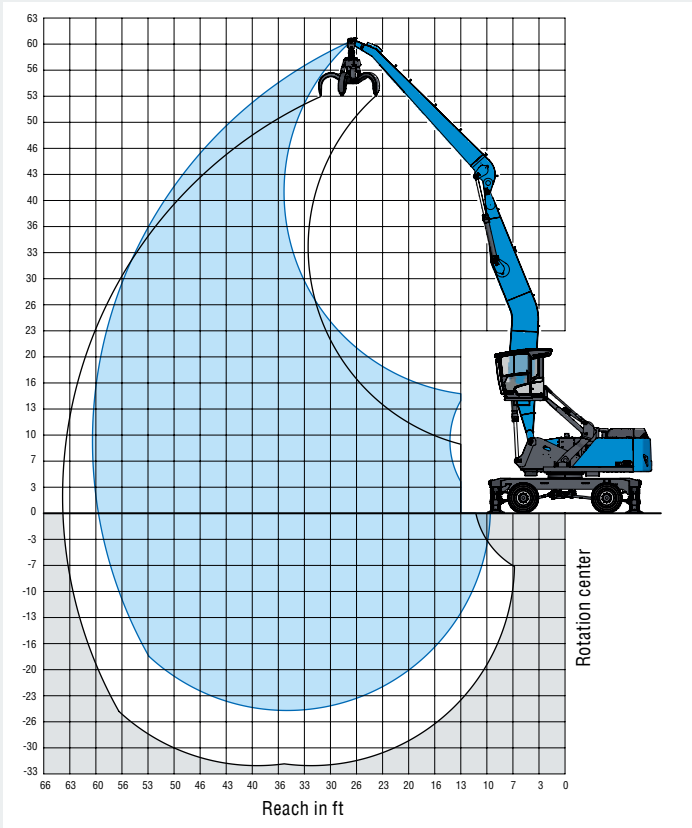
REACH 59' BANANA BOOM

| | |
|-------------------|---|
| Loading equipment | Boom 31.8' |
| | Dipperstick 25.6' |
| | Multi-tine grapple 0.78yd ³ open |

RECOMMENDED ATTACHMENTS

| | |
|--|--|
| Fuchs multi-tine grapple 0.78yd ³ | Open or half-closed |
| Fuchs multi-tine grapple 1.05yd ³ | Open or half-closed |
| Fuchs magnetic plate MP 1350 | dia = 53" with 40 hp (30 kW) magnet system |
| Clamshell grab 1.83yd ³ | Density of materials handled up to 99.9lbs/ft ³ |
| Clamshell grab 2.62yd ³ | Density of materials handled up to 49.9lbs/ft ³ |
| Lift hook | 44,100 lbs |

The lift capacity values are stated in imperial pounds (lbs). The pump pressure is 5,221 psi. In accordance with ISO 10567 the lift capacity values represents 75% of the static tipping loads or 87% of the hydraulic lifting force (marked *). On solid and level ground the values apply to a swing range of 360°. The (...) values apply in the longitudinal direction of the undercarriage. The values for "not supported" only apply via the steering axle or the locked oscillating axle. The weights of the attached load hoisting equipment (grab, load hook, etc.) must be deducted from the lift capacity values. The working load of the lifting device must be observed. In accordance with the EN 474-5 for object handling application hose rupture valves on the boom and stick cylinders, an overload warning device and the lift capacity table in the cab are required. For object handling application the machine has to be supported on a level ground.



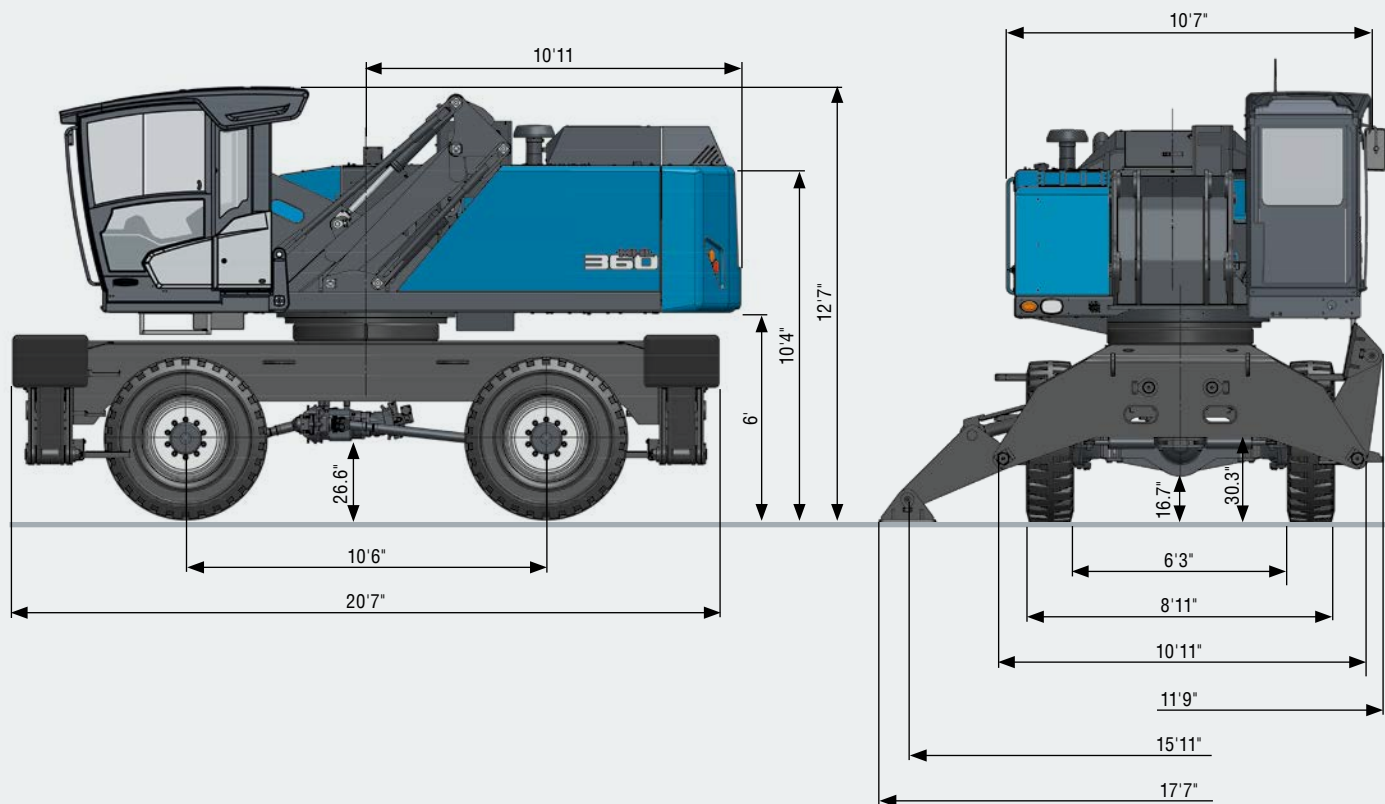
LIFTING CAPACITY

| Height [ft] | Undercarriage outrigger | Reach [ft] | | | | | | | | | |
|-------------------------|-------------------------|-------------------|-------------------|-------------------|-------------------|-------------------|-------------------|-------------------|-------------------|-----------------|-----------------|
| | | 15 | 20 | 25 | 30 | 35 | 40 | 45 | 50 | 55 | 60 |
| 50 | not supported | | | | | (14,460*) | (11,670) | | | | |
| | 4-point supported | | | | | 14,460* (14,460*) | 12,160* (12,160*) | | | | |
| 45 | not supported | | | | | | (12,010) | (9,420) | | | |
| | 4-point supported | | | | | | 13,040* (13,040*) | 11,510* (11,510*) | | | |
| 40 | not supported | | | | | | (12,100) | (9,590) | (7,580) | | |
| | 4-point supported | | | | | | 12,910* (12,910*) | 12,020* (12,020*) | 9,730* (9,730*) | | |
| 35 | not supported | | | | | | (12,000) | (9,560) | (7,660) | | |
| | 4-point supported | | | | | | 12,990* (12,990*) | 12,020* (12,020*) | 11,190* (11,190*) | | |
| 30 | not supported | | | | | (14,550*) | (11,740) | (9,400) | (7,590) | (6,120) | |
| | 4-point supported | | | | | 14,550* (14,550*) | 13,240* (13,240*) | 12,150* (12,150*) | 11,230* (11,230*) | 9,860* (9,860*) | |
| 25 | not supported | | | | | (14,330) | (11,340) | (9,130) | (7,430) | (6,060) | |
| | 4-point supported | | | | | 15,150* (15,150*) | 13,620* (13,620*) | 12,380* (12,380*) | 11,340* (11,340*) | 9,790 (10,410*) | |
| 20 | not supported | | | | (17,510) | (13,580) | (10,820) | (8,770) | (7,190) | (5,930) | |
| | 4-point supported | | | | 18,290* (18,290*) | 15,910* (15,910*) | 14,100* (14,100*) | 12,670* (12,670*) | 11,430* (11,430*) | 9,660 (10,450*) | |
| 15 | not supported | | | | (16,200) | (12,710) | (10,230) | (8,360) | (6,920) | (5,750) | (4,790) |
| | 4-point supported | 44,100* (44,100*) | 30,830* (30,830*) | 23,880* (23,880*) | 19,620* (19,620*) | 16,730* (16,730*) | 14,610* (14,610*) | 12,980* (12,980*) | 11,140 (11,650*) | 9,480 (10,480*) | 7,970* (7,970*) |
| 10 | not supported | | (26,130) | (19,200) | (14,820) | (11,810) | (9,610) | (7,940) | (6,620) | (5,570) | (4,700) |
| | 4-point supported | | 34,730* (34,730*) | 25,970* (25,970*) | 20,850* (20,850*) | 17,480* (17,480*) | 15,070* (15,070*) | 12,780 (13,240*) | 10,830 (11,760*) | 9,280 (10,470*) | 8,030 (8,900*) |
| 5 | not supported | | (22,900) | (17,260) | (13,570) | (10,960) | (9,020) | (7,530) | (6,340) | (5,390) | (4,620) |
| | 4-point supported | | 23,450* (23,450*) | 27,380* (27,380*) | 21,740* (21,740*) | 17,810* (17,810*) | 14,690 (15,390*) | 12,350 (13,390*) | 10,530 (11,770*) | 9,090 (10,350*) | 7,940 (8,820*) |
| 0 | not supported | | (17,370*) | (15,870) | (12,580) | (10,260) | (8,530) | (7,180) | (6,100) | (5,240) | |
| | 4-point supported | | 17,370* (17,370*) | 27,270 (27,790*) | 21,120 (22,090*) | 17,060 (18,240*) | 14,160 (15,480*) | 11,970 (13,360*) | 10,280 (11,630*) | 8,940 (10,060*) | |
| -5 | not supported | | (16,730*) | (15,050) | (11,910) | (9,750) | (8,150) | (6,900) | (5,920) | (5,150) | |
| | 4-point supported | | 16,730* (16,730*) | 26,350 (27,150*) | 20,390 (21,790*) | 16,500 (18,030*) | 13,750 (15,250*) | 11,690 (13,080*) | 10,090 (11,250*) | 8,840 (9,520*) | |
| -10 | not supported | | (17,590*) | (14,680) | (11,540) | (9,440) | (7,900) | (6,740) | (5,830) | (5,130) | |
| | 4-point supported | | 17,590* (17,590*) | 25,550* (25,550*) | 19,980 (20,810*) | 16,160 (17,320*) | 13,490 (14,630*) | 11,510 (12,460*) | 9,990 (10,540*) | 8,580* (8,580*) | |
| -15 | not supported | | (18,970*) | (14,630) | (11,420) | (9,310) | (7,810) | (6,680) | (5,830) | | |
| | 4-point supported | | 18,970* (18,970*) | 23,060* (23,060*) | 19,110* (19,110*) | 16,020* (16,020*) | 13,390* (13,390*) | 11,380* (11,380*) | 9,360* (9,360*) | | |
| -20 | not supported | | (20,600*) | (14,840) | (11,520) | (9,360) | (7,860) | (6,760) | (5,970) | | |
| | 4-point supported | | 20,600* (20,600*) | 19,660* (19,660*) | 16,630* (16,630*) | 14,040* (14,040*) | 11,790* (11,790*) | 9,680* (9,680*) | 7,410* (7,410*) | | |
| Max. Reach 59.4' | | | | | | | | | | | |
| -8.9 | not supported | | | | | | | | | (4,620) | |
| | 4-point supported | | | | | | | | | 7,910* (7,910*) | |

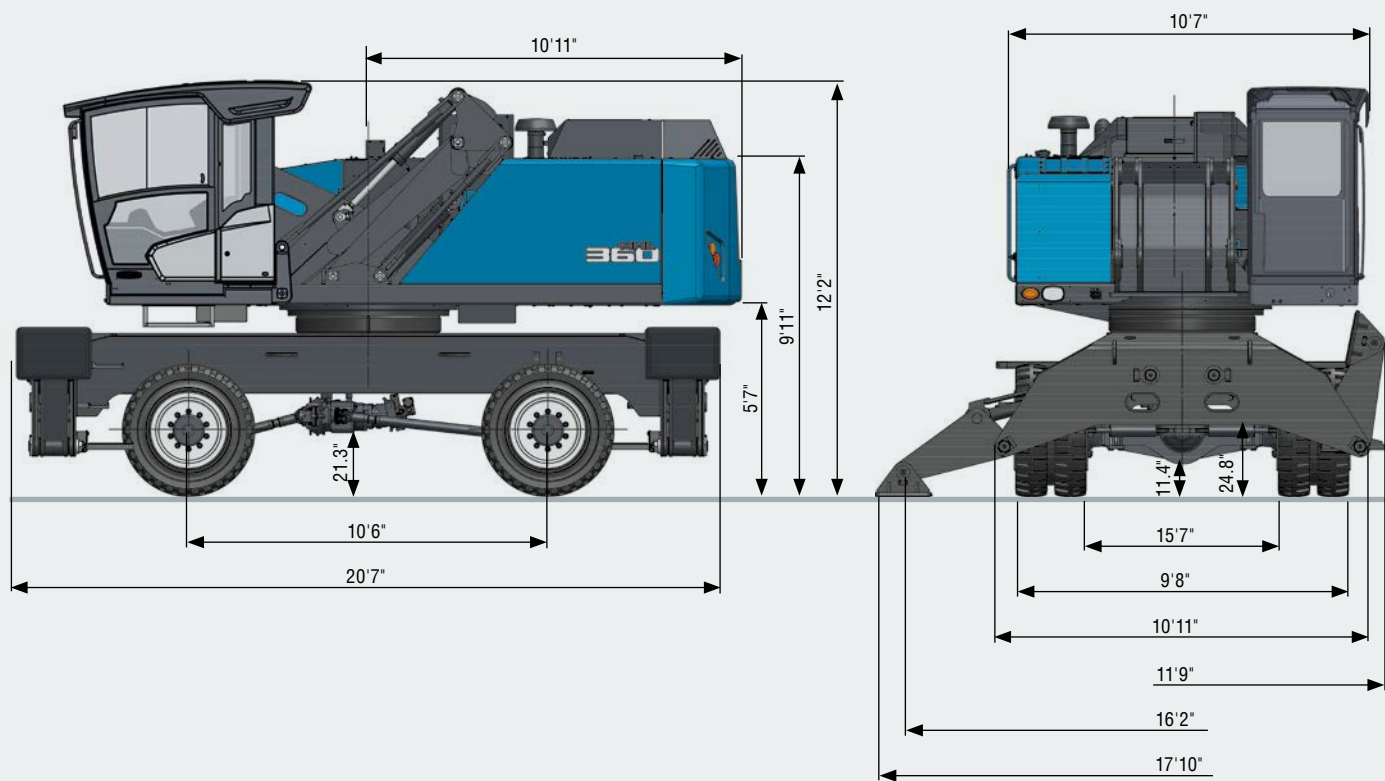
DIMENSIONS MHL360 F HD

WITH VERTICALLY AND HORIZONTALLY ADJUSTABLE CABIN

Single solid rubber tires | All dimensions in ft & in

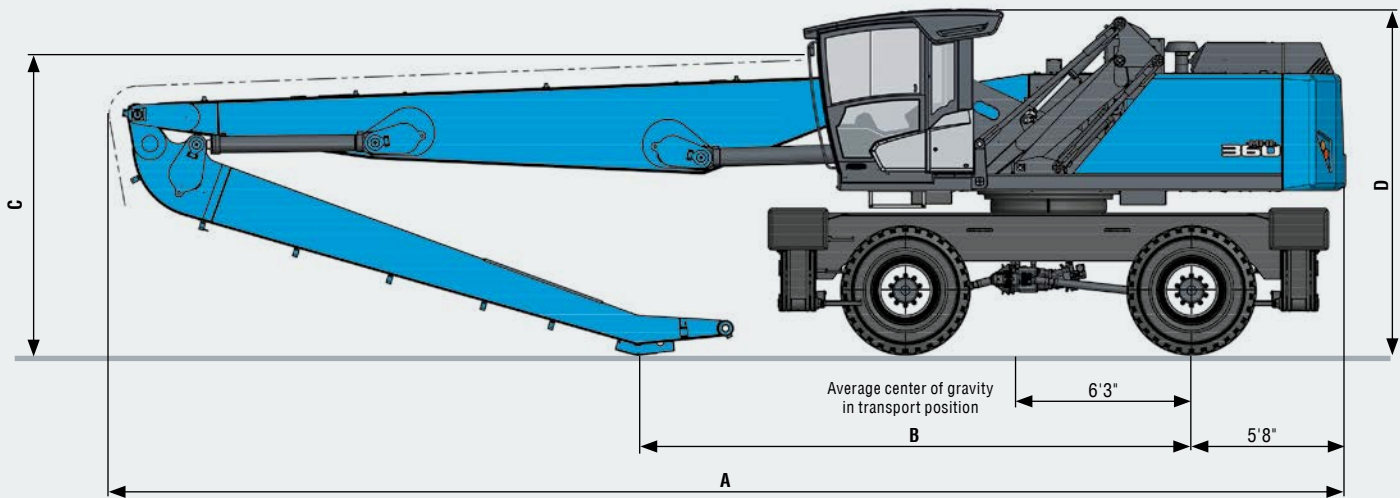


Dual solid rubber tires | All dimensions in ft & in



TRANSPORT DIMENSIONS MHL360 F HD

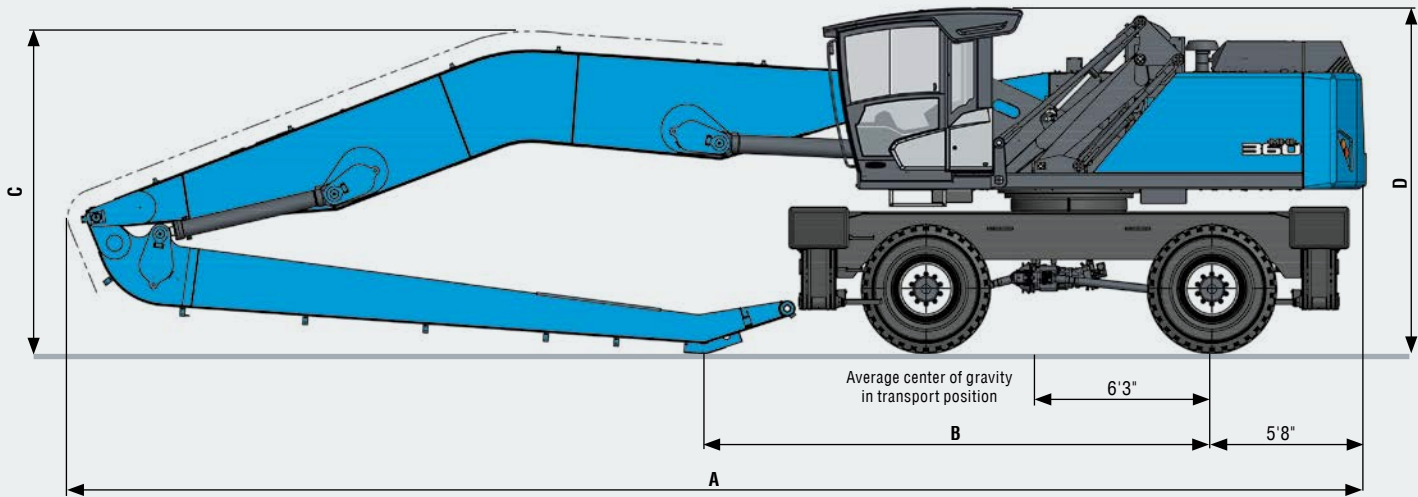
With dipperstick | All dimensions in ft & in



| Dimensions | Single pneumatic tires | | Dual pneumatic tires | |
|------------|------------------------|-----------|----------------------|-----------|
| | Reach 54'1" | Reach 59' | Reach 54'1" | Reach 59' |
| A | 45'5" | 48' | 45'5" | 48' |
| B | 20'4" | 20'5" | 20'8" | 20'9" |
| C | 10'11" | 11' | 10'7" | 11'5" |
| D | 12'7" | 12'7" | 12'2" | 12'2" |

WORK EQUIPMENT BANANA BOOM

All dimensions in ft & in
Reach 59'



| Dimensions | Single pneumatic tires | Dual pneumatic tires |
|------------|------------------------|----------------------|
| | Reach 59' | Reach 59' |
| A | 47'8" | 47'10" |
| B | 18'8" | 19'1" |
| C | 11'10" | 12'1" |
| D | 12'7" | 12'2" |

WORKING RANGE

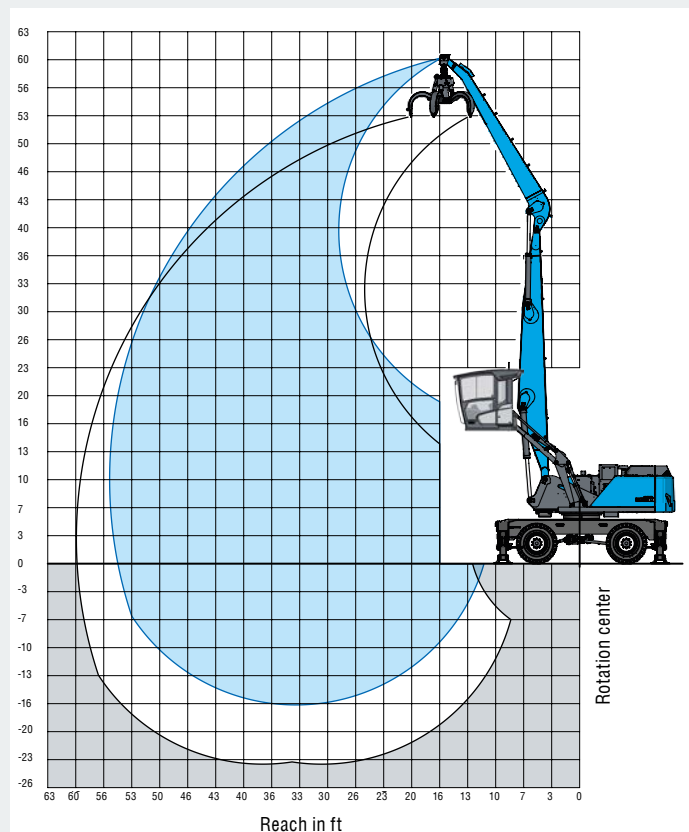
REACH 54'1" WITH DIPPERSTICK

| | |
|-------------------|---|
| Loading equipment | Boom 29.2' |
| | Dipperstick 22.9' |
| | Multi-tine grapple 1.05yd ³ open |

RECOMMENDED ATTACHMENTS

| | |
|--|--|
| Fuchs multi-tine grapple 0.78yd ³ | Open or half-closed |
| Fuchs multi-tine grapple 1.05yd ³ | Open or half-closed |
| Fuchs multi-tine grapple 1.31yd ³ | Open or half-closed |
| Fuchs magnetic plate MP 1350 | dia = 53" with 40 hp (30kW) magnet system |
| Clamshell grab 1.83yd ³ | Density of materials handled up to 99.9lbs/ft ³ |
| Clamshell grab 2.62yd ³ | Density of materials handled up to 49.9lbs/ft ³ |
| Lift hook | 44,100lbs |

The lift capacity values are stated in imperial pounds (lbs). The pump pressure is 5,221 psi. In accordance with ISO 10567 the lift capacity values represents 75% of the static tipping loads or 87% of the hydraulic lifting force (marked *). On solid and level ground the values apply to a swing range of 360°. The (...) values apply in the longitudinal direction of the undercarriage. The values for "not supported" only apply via the steering axle or the locked oscillating axle. The weights of the attached load hoisting equipment (grab, load hock, etc.) must be deducted from the lift capacity values. The working load of the lifting device must be observed. In accordance with the EN 474-5 for object handling application hose rupture valves on the boom and stick cylinders, an overload warning device and the lift capacity table in the cab are required. For object handling application the machine has to be supported on a level ground.



LIFTING CAPACITY

| Height [ft] | Undercarriage outrigger | Reach [ft] | | | | | | | |
|------------------|-------------------------|-------------------|-------------------|-------------------|-------------------|-------------------|-------------------|-------------------|-------------------|
| | | 20 | 25 | 30 | 35 | 40 | 45 | 50 | 55 |
| 60 | not supported | | (18,700°) | | | | | | |
| | 4-point supported | | 18,700° (18,700°) | | | | | | |
| 50 | not supported | | | (19,200°) | (14,300°) | | | | |
| | 4-point supported | | | 19,200° (19,200°) | 14,300° (14,300°) | | | | |
| 45 | not supported | | | (19,800) | (15,200) | (11,700) | | | |
| | 4-point supported | | | 20,300° (20,300°) | 18,100° (18,100°) | 13,900° (13,900°) | | | |
| 40 | not supported | | | (19,800) | (15,200) | (11,900) | (9,500) | | |
| | 4-point supported | | | 20,100° (20,100°) | 17,900° (17,900°) | 16,100° (16,100°) | 12,100° (12,100°) | | |
| 35 | not supported | | | (19,800) | (15,200) | (11,900) | (9,500) | | |
| | 4-point supported | | | 20,100° (20,100°) | 17,900° (17,900°) | 16,100° (16,100°) | 14,600° (14,600°) | | |
| 30 | not supported | | | (19,400) | (15,000) | (11,900) | (9,500) | (7,700) | |
| | 4-point supported | | | 20,700° (20,700°) | 18,300° (18,300°) | 16,300° (16,300°) | 14,600° (14,600°) | 13,000° (13,000°) | |
| 25 | not supported | | (25,100) | (18,700) | (14,600) | (11,500) | (9,300) | (7,700) | |
| | 4-point supported | | 25,100° (25,100°) | 21,400° (21,400°) | 18,700° (18,700°) | 16,500° (16,500°) | 14,800° (14,800°) | 13,000° (13,000°) | |
| 20 | not supported | (34,000) | (23,800) | (17,900) | (13,900) | (11,000) | (9,000) | (7,500) | |
| | 4-point supported | 34,000° (34,000°) | 26,900° (26,900°) | 22,500° (22,500°) | 19,200° (19,200°) | 16,800° (16,800°) | 14,800° (14,800°) | 12,800° (13,000°) | |
| 15 | not supported | (30,600) | (21,800) | (16,500) | (13,200) | (10,600) | (8,800) | (7,300) | (6,200) |
| | 4-point supported | 37,700° (37,700°) | 28,900° (28,900°) | 23,400° (23,400°) | 19,800° (19,800°) | 15,400° (15,400°) | 14,800° (14,800°) | 12,600° (12,800°) | 10,600° (10,600°) |
| 10 | not supported | (27,100) | (20,100) | (15,400) | (12,300) | (10,100) | (8,400) | (7,100) | (6,000) |
| | 4-point supported | 40,300° (40,300°) | 30,200° (30,200°) | 24,000° (24,000°) | 20,100° (20,100°) | 15,400° (15,400°) | 14,600° (14,600°) | 12,300° (12,600°) | 10,100° (10,100°) |
| 5 | not supported | (24,500°) | (18,500) | (14,600) | (11,700) | (9,700) | (8,200) | (6,800) | (6,000) |
| | 4-point supported | 24,500° (24,500°) | 30,400° (30,400°) | 24,300° (24,300°) | 19,800° (19,800°) | 16,800° (16,800°) | 14,300° (14,300°) | 11,900° (11,900°) | 9,300° (9,300°) |
| 0 | not supported | (19,600°) | (17,400) | (13,700) | (11,200) | (9,300) | (7,900) | (6,800) | |
| | 4-point supported | 19,600° (19,600°) | 29,100° (29,100°) | 23,400° (23,400°) | 19,200° (19,200°) | 16,100° (16,100°) | 13,400° (13,400°) | 11,000° (11,000°) | |
| -5 | not supported | (19,800°) | (16,800) | (13,200) | (10,800) | (9,000) | (7,700) | (6,600) | |
| | 4-point supported | 19,800° (19,800°) | 26,500° (26,500°) | 21,600° (21,600°) | 17,900° (17,900°) | 15,000° (15,000°) | 12,300° (12,300°) | 9,500° (9,500°) | |
| -10 | not supported | (21,600°) | (16,800) | (13,000) | (10,600) | (9,000) | (7,700) | (6,800) | |
| | 4-point supported | 21,600° (21,600°) | 22,700° (22,700°) | 19,000° (19,000°) | 15,700° (15,700°) | 13,000° (13,000°) | 10,400° (10,400°) | 7,300° (7,300°) | |
| -15 | not supported | | (16,800) | (13,000) | (10,600) | (9,000) | | | |
| | 4-point supported | | 17,400° (17,400°) | 15,000° (15,000°) | 12,600° (12,600°) | 10,100° (10,100°) | | | |
| Max. Reach 55.1' | | | | | | | | | |
| 9.8 | not supported | | | | | | | (6,000) | |
| | 4-point supported | | | | | | | 8,800° (8,800°) | |

WORKING RANGE

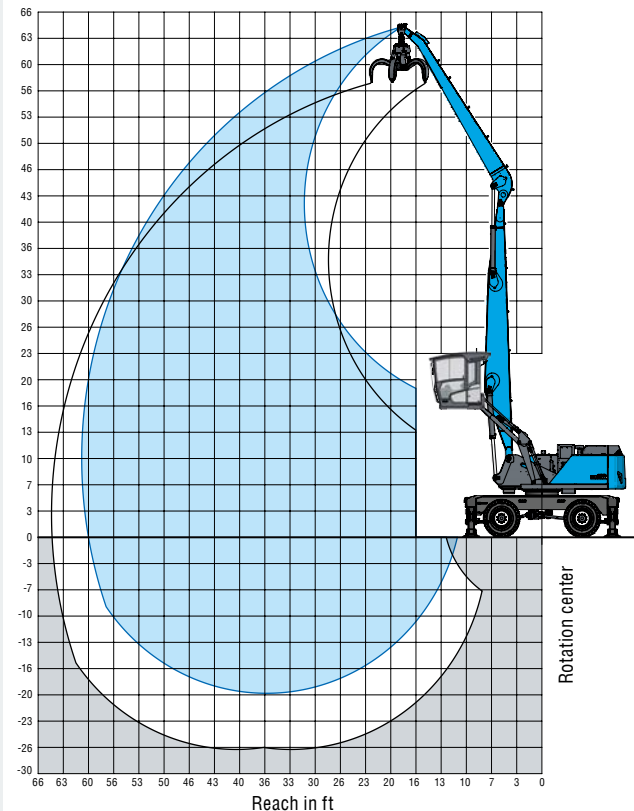
REACH 59' WITH DIPPERSTICK

| | |
|-------------------|---|
| Loading equipment | Boom 31.8' |
| | Dipperstick 25.6' |
| | Multi-tine grapple 1.05yd ³ open |

RECOMMENDED ATTACHMENTS

| | |
|--|--|
| Fuchs multi-tine grapple 0.78yd ³ | Open or half-closed |
| Fuchs multi-tine grapple 1.05yd ³ | Open or half-closed |
| Fuchs magnetic plate MP 1350 | dia = 53" with 40 hp (30 kW) magnet system |
| Clamshell grab 1.83yd ³ | Density of materials handled up to 99.9lbs/ft ³ |
| Clamshell grab 2.62yd ³ | Density of materials handled up to 49.9lbs/ft ³ |
| Lift hook | 44,100 lbs |

The lift capacity values are stated in imperial pounds (lbs). The pump pressure is 5,221 psi. In accordance with ISO 10567 the lift capacity values represents 75% of the static tipping loads or 87% of the hydraulic lifting force (marked °). On solid and level ground the values apply to a swing range of 360°. The (...) values apply in the longitudinal direction of the undercarriage. The values for "not supported" only apply via the steering axle or the locked oscillating axle. The weights of the attached load hoisting equipment (grab, load hook, etc.) must be deducted from the lift capacity values. The working load of the lifting device must be observed. In accordance with the EN 474-5 for object handling application hose rupture valves on the boom and stick cylinders, an overload warning device and the lift capacity table in the cab are required. For object handling application the machine has to be supported on a level ground.



LIFTING CAPACITY

| Height [ft] | Undercarriage outrigger | Reach [ft] | | | | | | | | | |
|------------------|----------------------------|-----------------|-------------------|-------------------|-------------------|-------------------|-------------------|-------------------|-------------------|-------------------|-----------------|
| | | 15 | 20 | 25 | 30 | 35 | 40 | 45 | 50 | 55 | 60 |
| 60 | not supported | | | (17,500*) | (12,800*) | | | | | | |
| | 4-point supported | | | 17,500* (17,500*) | 12,800* (12,800*) | | | | | | |
| 55 | not supported | | | (17,700*) | (14,200*) | | | | | | |
| | 4-point supported | | | 17,700* (17,700*) | 14,200* (14,200*) | | | | | | |
| 50 | not supported | | | | (16,200) | (12,700) | | | | | |
| | 4-point supported | | | | 17,200* (17,200*) | 14,200* (14,200*) | | | | | |
| 45 | not supported | | | | (16,500) | (13,000) | (10,300) | | | | |
| | 4-point supported | | | | 16,900* (16,900) | 15,200* (15,200*) | 13,400* (13,400*) | | | | |
| 40 | not supported | | | | (16,500) | (13,000) | (10,400) | (8,300) | | | |
| | 4-point supported | | | | 16,800* (16,800*) | 15,100* (15,100*) | 13,700* (13,700*) | 11,700* (11,700*) | | | |
| 35 | not supported | | | | (16,300) | (12,900) | (10,400) | (8,400) | | | |
| | 4-point supported | | | | 17,000* (17,000*) | 15,200* (15,200*) | 13,700* (13,700*) | 12,300* (12,300*) | | | |
| 30 | not supported | | | | (19,800*) | (16,000) | (12,600) | (10,200) | (8,300) | (6,800) | |
| | 4-point supported | | | | 19,800* (19,800*) | 17,300* (17,300*) | 15,400* (15,400*) | 13,700* (13,700*) | 12,300* (12,300*) | 11,000* (11,000*) | |
| 25 | not supported | | | | (19,800) | (15,400) | (12,200) | (9,900) | (8,100) | (6,700) | |
| | 4-point supported | | | | 20,600* (20,600*) | 17,800* (17,800*) | 15,600* (15,600*) | 13,900* (13,900*) | 12,400* (12,400*) | 11,000* (11,000*) | |
| 20 | not supported | | (29,400*) | (25,000) | (18,700) | (14,600) | (11,700) | (9,600) | (7,900) | (6,600) | |
| | 4-point supported | | 29,400* (29,400*) | 26,000* (26,000*) | 21,500* (21,500*) | 18,300* (18,300*) | 15,900* (15,900*) | 14,000* (14,000*) | 12,400* (12,400*) | 10,900* (10,900*) | |
| 15 | not supported | | (32,100) | (22,900) | (17,400) | (13,700) | (11,100) | (9,200) | (7,600) | (6,400) | (5,400) |
| | 4-point supported | | 36,400* (36,400*) | 27,700* (27,700*) | 22,400* (22,400*) | 18,800* (18,800*) | 16,200* (16,200*) | 14,100* (14,100*) | 12,300* (12,300*) | 10,700* (10,700*) | 9,000* (9,000*) |
| 10 | not supported | | (28,100) | (20,700) | (16,100) | (12,900) | (10,500) | (8,700) | (7,300) | (6,200) | (5,300) |
| | 4-point supported | | 38,700* (38,700*) | 28,900* (28,900*) | 23,100* (23,100*) | 19,100* (19,100*) | 16,300* (16,300*) | 14,000* (14,000*) | 12,200* (12,200*) | 10,500* (10,500*) | 8,500* (8,500*) |
| 5 | not supported | | (19,100*) | (18,900) | (14,900) | (12,000) | (10,000) | (8,300) | (7,100) | (6,000) | (5,200) |
| | 4-point supported | | 19,100* (19,100*) | 29,100* (29,100*) | 23,200* (23,200*) | 19,100* (19,100*) | 16,100* (16,100*) | 13,800* (13,800*) | 11,800* (11,800*) | 10,000* (10,000*) | 7,900* (7,900*) |
| 0 | not supported | (7,200*) | (15,100*) | (17,600) | (13,900) | (11,400) | (9,500) | (8,000) | (6,800) | (5,900) | (5,200) |
| | 4-point supported | 7,200* (7,200*) | 15,100* (15,100*) | 28,100* (28,100*) | 22,500* (22,500*) | 18,600* (18,600*) | 15,600* (15,600*) | 13,300* (13,300*) | 11,200* (11,200) | 9,300* (9,300*) | 6,800* (6,800*) |
| -5 | not supported | (9,300*) | (15,300*) | (16,800) | (13,300) | (10,900) | (9,100) | (7,800) | (6,700) | (5,800) | |
| | 4-point supported | 9,300* (9,300*) | 15,300* (15,300*) | 25,800* (25,800*) | 21,100* (21,100*) | 17,500* (17,500*) | 14,700* (14,700*) | 12,400* (12,400*) | 10,300* (10,300*) | 8,200* (8,200*) | |
| -10 | not supported | | (16,700) | (16,500) | (13,000) | (10,600) | (8,900) | 7,600 | (6,600) | (5,800) | |
| | 4-point supported | | 16,700* (16,700*) | 22,500* (22,500*) | 18,800* (18,800*) | 15,800* (15,800*) | 13,300* (13,300*) | 11,000* (11,000*) | 8,900* (8,900*) | 6,500* (6,500*) | |
| -15 | not supported | | | (16,500) | (12,900) | (10,500) | (8,800) | (7,600) | (6,600) | | |
| | 4-point supported | | | 18,200* (18,200*) | 15,700* (15,700*) | 13,400* (13,400*) | 11,200* (11,200) | 9,100* (9,100*) | 6,900* (6,900*) | | |
| -20 | 4-point supported | | | | (10,100) | 10,100* (10,100*) | | | | | |
| Max. Reach 59.4' | | | | | | | | | | | |
| 8.9 | not supported | | | | | | | | | (5,200) | |
| | 4-point supported | | | | | | | | | 8,000* (8,000*) | |

WORKING RANGE

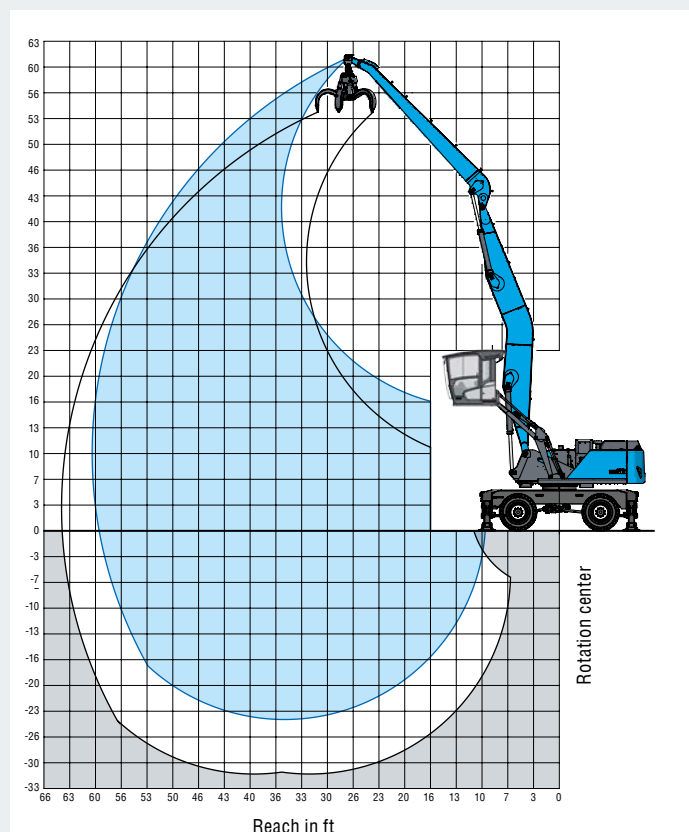
REACH 59' BANANA BOOM

| | |
|-------------------|---|
| Loading equipment | Boom 31.8' |
| | Dipperstick 25.6' |
| | Multi-tine grapple 1.05yd ³ open |

RECOMMENDED ATTACHMENTS

| | |
|--|--|
| Fuchs multi-tine grapple 0.78yd ³ | Open or half-closed |
| Fuchs multi-tine grapple 1.05yd ³ | Open or half-closed |
| Fuchs magnetic plate MP 1350 | dia = 53" with 40hp (30kW) magnet system |
| Clamshell grab 1.83yd ³ | Density of materials handled up to 99.9lbs/ft ³ |
| Clamshell grab 2.62yd ³ | Density of materials handled up to 49.9lbs/ft ³ |
| Lift hook | 44,100lbs |

The lift capacity values are stated in imperial pounds (lbs). The pump pressure is 5,221 psi. In accordance with ISO 10567 the lift capacity values represents 75% of the static tipping loads or 87% of the hydraulic lifting force (marked °). On solid and level ground the values apply to a swing range of 360°. The (...) values apply in the longitudinal direction of the undercarriage. The values for "not supported" only apply via the steering axle or the locked oscillating axle. The weights of the attached load hoisting equipment (grab, load hook, etc.) must be deducted from the lift capacity values. The working load of the lifting device must be observed. In accordance with the EN 474-5 for object handling application hose rupture valves on the boom and stick cylinders, an overload warning device and the lift capacity table in the cab are required. For object handling application the machine has to be supported on a level ground.



LIFTING CAPACITY

| Height [ft] | Undercarriage outrigger | Reach [ft] | | | | | | | | | | |
|------------------|-------------------------|-----------------|-------------------|-------------------|-------------------|-------------------|-------------------|-------------------|-------------------|-------------------|-------------------|-----------------|
| | | 10 | 15 | 20 | 25 | 30 | 35 | 40 | 45 | 50 | 55 | 60 |
| 55 | not supported | | | | | | (12,300°) | | | | | |
| | 4-point supported | | | | | | 12,300° (12,300°) | | | | | |
| 50 | not supported | | | | | | (14,300°) | (12,500°) | | | | |
| | 4-point supported | | | | | | 14,300° (14,300°) | 12,500° (12,500°) | | | | |
| 45 | not supported | | | | | | (12,900°) | (10,200°) | | | | |
| | 4-point supported | | | | | | 12,900° (12,900°) | 11,900° (11,900°) | | | | |
| 40 | not supported | | | | | | (12,800°) | (10,400°) | (8,300°) | | | |
| | 4-point supported | | | | | | 12,800° (12,800°) | 11,900° (11,900°) | 10,100° (10,100°) | | | |
| 35 | not supported | | | | | | (12,900°) | (10,300°) | (8,300°) | | | |
| | 4-point supported | | | | | | 12,900° (12,900°) | 11,900° (11,900°) | 11,000° (11,000°) | | | |
| 30 | not supported | | | | | | (14,500°) | (12,600°) | (10,200°) | (8,300°) | (6,700°) | |
| | 4-point supported | | | | | | 14,500° (14,500°) | 13,100° (13,100°) | 12,000° (12,000°) | 11,100° (11,100°) | 10,200° (10,200°) | |
| 25 | not supported | | | | | | (15,100°) | (12,200°) | (9,900°) | (8,100°) | (6,600°) | |
| | 4-point supported | | | | | | 15,100° (15,100°) | 13,500° (13,500°) | 12,300° (12,300°) | 11,200° (11,200°) | 10,300° (10,300°) | |
| 20 | not supported | | | | (21,700°) | (18,300°) | (14,600°) | (11,700°) | (9,500°) | (7,800°) | (6,500°) | |
| | 4-point supported | | | | 21,700° (21,700°) | 18,300° (18,300°) | 15,900° (15,900°) | 14,000° (14,000°) | 12,600° (12,600°) | 11,400° (11,400°) | 10,300° (10,300°) | |
| 15 | not supported | | (44,100) | (31,100°) | (22,900) | (17,400) | (13,700) | (11,100) | (9,100) | (7,600) | (6,300) | (5,300) |
| | 4-point supported | | 44,100 (44,100) | 31,100° (31,100°) | 24,000° (24,000°) | 19,600° (19,600°) | 16,700° (16,700°) | 14,500° (14,500°) | 12,900° (12,900°) | 11,500° (11,500°) | 10,300° (10,300°) | 8,000° (8,000°) |
| 10 | not supported | | (13,100°) | (28,000) | (20,600) | (16,600) | (12,800) | (10,400) | (8,700) | (7,300) | (6,100) | (5,200) |
| | 4-point supported | | 13,100° (13,100°) | 34,800° (34,800°) | 26,000° (26,000°) | 20,800° (20,800°) | 17,400° (17,400°) | 14,900° (14,900°) | 13,100° (13,100°) | 11,600° (11,600°) | 10,300° (10,300°) | 8,800° (8,800°) |
| 5 | not supported | | (8,000°) | (22,100°) | (18,700) | (14,700) | (11,900) | (9,900) | (8,300) | (7,000) | (6,000) | (5,100) |
| | 4-point supported | | 8,000° (8,000°) | 22,100° (22,100°) | 27,200° (27,200°) | 21,600° (21,600°) | 17,900° (17,900°) | 15,200° (15,200°) | 13,200° (13,200°) | 11,600° (11,600°) | 10,200° (10,200°) | 8,600° (8,600°) |
| 0 | not supported | (5,100°) | (8,800°) | (17,100°) | (17,400) | (13,800) | (11,300) | (9,400) | (7,900) | (6,700) | (5,800) | |
| | 4-point supported | 5,100° (5,100°) | 8,800° (8,800°) | 17,100° (17,100°) | 27,500° (27,500°) | 21,900° (21,900°) | 18,000° (18,000°) | 15,300° (15,300°) | 13,200° (13,200°) | 11,400° (11,400°) | 9,900° (9,900°) | |
| -5 | not supported | | (10,600°) | (16,700°) | (16,600) | (13,100) | (10,800) | (9,000) | (7,600) | (6,600) | (5,700) | |
| | 4-point supported | | 10,600° (10,600°) | 16,700° (16,700°) | 26,800° (26,800°) | 21,500° (21,500°) | 17,800° (17,800°) | 15,000° (15,000°) | 12,900° (12,900°) | 11,000° (11,000°) | 9,300° (9,300°) | |
| -10 | not supported | | (12,600°) | (17,600°) | (16,300) | (12,800) | (10,500) | (8,800) | (7,500) | (6,500) | (5,700) | |
| | 4-point supported | | 12,600° (12,600°) | 17,600° (17,600°) | 25,100° (25,100°) | 20,400° (20,400°) | 17,000° (17,000°) | 14,300° (14,300°) | 12,200° (12,200°) | 10,300° (10,300°) | 8,300° (8,300°) | |
| -15 | not supported | | | (19,000°) | (16,300) | (12,700) | (10,300) | (8,700) | (7,400) | (6,500) | | |
| | 4-point supported | | | 19,000° (19,000°) | 22,500° (22,500°) | 18,700° (18,700°) | 15,600° (15,600°) | 13,200° (13,200°) | 11,100° (11,100°) | 9,000° (9,000°) | | |
| -20 | not supported | | | (16,500) | (12,800) | (10,400) | (8,800) | (7,500) | (6,700) | | | |
| | 4-point supported | | | 19,000° (19,000°) | 16,100° (16,100°) | 13,600° (13,600°) | 11,400° (11,400°) | 9,300° (9,300°) | 7,000° (7,000°) | | | |
| Max. Reach 59.9' | | | | | | | | | | | | |
| 8.9 | not supported | | | | | | | | | | | (5,100) |
| | 4-point supported | | | | | | | | | | | 7,800° (7,800°) |



FUCHS[®]
A TEREX BRAND

WORKS FOR YOU.[™]

www.terex-fuchs.com

March 2018. Product specifications and prices are subject to change without notice or obligation. The photographs and/or drawings in this document are for illustrative purposes only. Refer to the appropriate Operator's Manual for instructions on the proper use of this equipment. Failure to follow the appropriate Operator's Manual when using our equipment or to otherwise act irresponsibly may result in serious injury or death. The only warranty applicable to our equipment is the standard written warranty applicable to the particular product and sale and Terex makes no other warranty, express or implied. © Terex Corporation 2018 · Terex, the Terex Crown design, Fuchs and Works For You are trademarks of Terex Corporation or its subsidiaries.

Terex[®] Deutschland GmbH | Industriestraße 3 | 76669 Bad Schönborn | Germany | Fon: +49 (0) 7253 84-0 | Fax: +49 (0) 7253 84-102 | info@terex-fuchs.com

