



US

Material Handler | F-Series

MHL 375



328 hp (245 kW) Diesel
200 kW Electric



141,757–146,607 lbs



max. 65'7"



FUCHS®
A TEREX BRAND

TECHNICAL DATA

OPERATING WEIGHT WITHOUT ATTACHMENTS

MHL375 F	141,757–146,607 lbs
----------	---------------------

DIESEL ENGINE

Manufacturer and model	Deutz TCD 7.8 L6
Design	6-cylinder in-line engine
Functionality	4-stroke engine, direct common-rail fuel injection, turbocharger with charge air intercooling, controlled exhaust gas recirculation, diesel particle filter with a continuously regenerating system and SCR catalytic converter
Engine power	328 hp
Rated speed	2,000 rpm
Displacement	476 cui
Cooling system	Water and charge air cooling with temperature controlled fan speed
Exhaust emission standard	EU-Stage V / EPA-Tier 4f
Fuel tank	183 gal
DEF / Urea tank	13 gal AdBlue

ELECTRIC MOTOR

Power	200 kW
Total connected load	250 kW
Motor start	Via soft start
Optional cable reel	Up to 164 ft (other lengths on request)

ELECTRICAL SYSTEM

Alternator	28 V / 100 A
Operating voltage	24 V
Battery	2 × 12 V / 110 Ah / 750 A
Lighting system	2 x LED floodlights at the front of the machine, rear parking lights and indicator lights
Optional equipment	30 kW DC generator with control and insulation monitoring

TRAVEL DRIVE

Hydrostatic drive through infinitely variable axial piston motor and directly mounted travel brake valves, flanged to a transfer box, all-wheel drive

Travel speed	max. 5.6 mph
Gradeability	max. 25 %
Turning radius	32°9"

SLEWING DRIVE

Slewing ring	Double slewing ring with inner teeth
Drive	2-stage planetary gear with integrated multi-disc brake
Uppercarriage swing speed	0–5 rpm
Slewing lock	Electronically activated

UNDERCARRIAGE

Front axle	Planetary drive axle with integrated drum brake, rigid bearing, max. steering angle 30°
Rear axle	Planetary drive axle with integrated drum brake and switching oscillating lock
Outrigger	4-point outrigger
Tires	Single solid rubber tyres 28.0"–54" (SETCO)

BRAKES

Service brake	Hydraulically activated single-circuit brake system that works on all four pairs of wheels
Parking brake	Electronically activated transmission disc brake that works on the front and rear axles

HYDRAULIC SYSTEM

Max. flow rate	1 × 148 gpm and 1 × 40 gpm (for slewing)
Max. operating pressure	4,641 / 5,221 psi
Hydraulic oil tank	140 gal

OPERATOR'S CAB

Cab	Vertically and horizontally adjustable to a max. viewing height of 20'8" Soundproof, insulating panoramic windows enabling all-round visibility, windscreen with pull-down sunblind, roof skylight, cab door sliding window, sliding door
Air conditioning	Automatic climate control. Infinitely variable water heating with 8-speed fans, 10 adjustable nozzles, 4 set into the roof lining and 3 defrosting nozzles
Operator's seat	Air-cushioned comfort seat with integrated headrest, safety belt, and lower lumbar support, optional seat heating. Allows comfortable working by offering universal adjustment possibilities of the seat position, the seat incline, and the position of the seat cushion in relation to the armrests and joysticks
Monitoring	Ergonomically-arranged, anti-glare controls, multi-functional display, automatic monitoring and storage of deviating operating conditions, (e.g. all hydraulic oil filters, hot/cold hydraulic oil temperature, coolant temperature and charge air temperature, diesel particle filter load), visual and acoustic warning up to the point of shutting feed forward control or reducing engine output. Individual sensor diagnosis using the multi-functional display, rear camera and side camera
Noise level	Sound power level (outdoor area) L _{WA} 102.7 dB(A) (measured) as per directive 2000/14/EC L _{WA} 104 dB(A) (guaranteed) as per directive 2000/14/EC Sound pressure level (inside the cab) as per the standard ISO 6396 L _{PA} 71 dB(A)

Certification as per CE directives

EQUIPMENT

DIESEL ENGINE

	Standard	Option
Intercooler and coolant radiator	•	
Direct electronic fuel injection / common rail	•	
Advanced automatic idle incl. engine shut-off function	•	
Engine preheating		•
Engine diagnosis interface	•	
Temperature-dependent fan drive	•	

UNDERCARRIAGE

All-wheel drive	•	
Drum brakes	•	
Rear oscillating axle lock	•	
4-point stabilizers	•	
Stabilizer cylinder with integrated, double-sided shut-off valves	•	
Piston rod protection on stabilizer cylinders	•	
Tool box	•	
Special paint (customer paint work)		•
Single solid rubber tyres 28.0"-54" (SETCO)	•	
Central greasing point for hard-to-reach greasing points	•	

UPPERCARRIAGE

Separated cooling system for engine and hydraulic oil	•	
Cooling system with temperature-dependent fan drive	•	
Reversible fan for combined water / charge air cooler and hydraulic oil cooler	•	
Automatic, central lubrication system	•	
Rear view camera	•	
Side view camera	•	
Travel alarm flashing alarm light with acoustic warning signal	•	
Electric refueling pump		•
Protection kit for headlights		•
Special paint (customer paint work)		•
External battery terminals	•	

CAB

Vertically and horizontally cab system	•	
Sliding window in cab door	•	

CAB

	Standard	Option
Cabin with penetration resistant glass front and top (classification P5A)	•	
Windshield washer system (windscreen)	•	
Roof washer system (roof panel)		•
Air-cushioned operator seat with headrest, seatbelt, and lumbar support	•	
Seat heating		•
Joystick steering	•	
Steering column, height and tilt adjustable		•
Automatic air conditioning system	•	
Independent heating system		•
Multifunction display	•	
Document net	•	
FOPS Guard		•
Front and FOPS Guard	•	
12 V transformer		•
Digital Radio (DAB+, USB, Bluetooth and hands-free system)	•	
12 V socket	•	
Fire extinguisher, dry powder	•	
Catwalk for cabin, access ladder included	•	

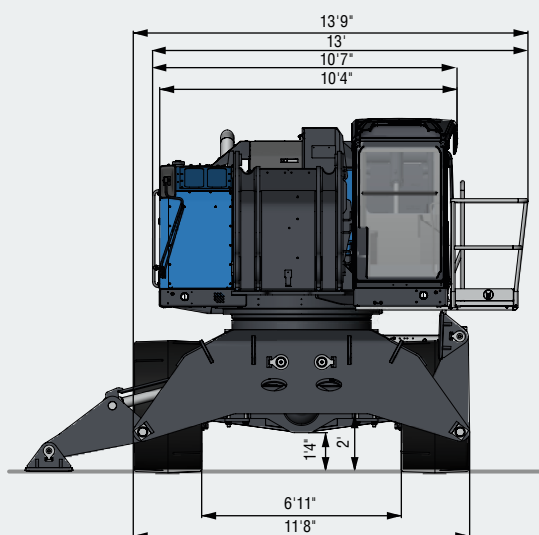
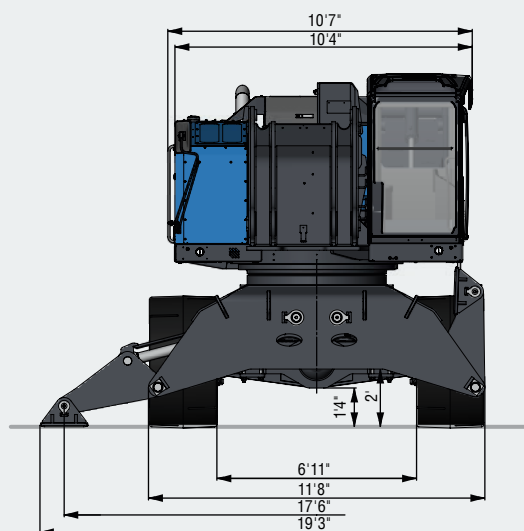
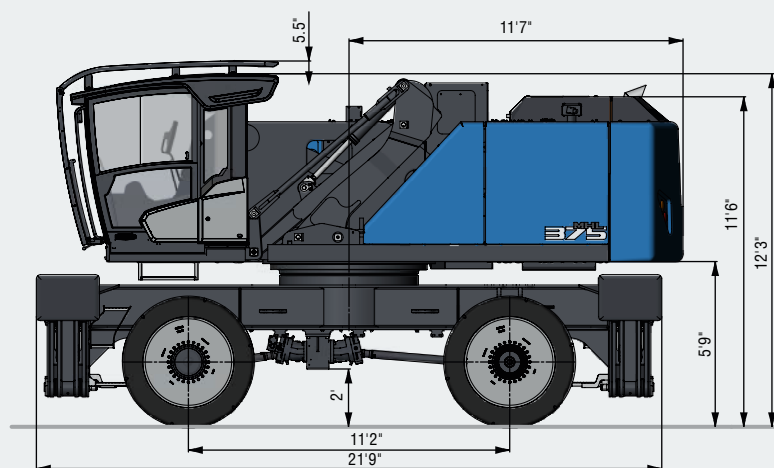
OTHER EQUIPMENT

30 kW DC generator	•	
Close proximity range limiter for dipper stick	•	
Coolant and hydraulic oil level monitoring system	•	
Overload and working area control		•
Filter system for attachments	•	
Hose rupture valves for boom cylinder	•	
Hose rupture valves for stick cylinder	•	
Overload warning device	•	
Quick coupling on the dipperstick	•	
Dipperstick impact protection		•
Active cyclone pre-filter (TOP AIR)	•	
Hydraulic oil preheating		•
Lubrication of grab suspension by central lubrication system	•	
LED front headlights	•	
Light package 1: Power LED (stick center)	•	
Light package 2: Power LED (cabin front left and right)	•	
Light package 3: Power LED (cabin rear left)	•	
Light package 4: Power LED (uppercarriage, between lift cylinder)	•	
Light package 5: Basic LED (additional light ascent with remote control)		•
Float switch		•
Fuchs Telematics System, incl. 2 years contract	•	
Boom cylinder damping system (piston accumulator)	•	

DIMENSIONS

WITH VERTICALLY ADJUSTABLE CABIN

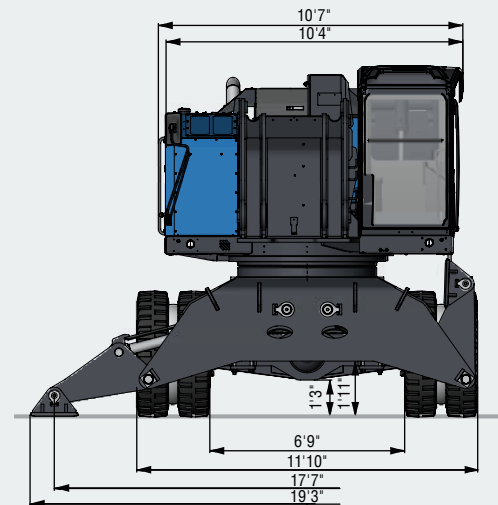
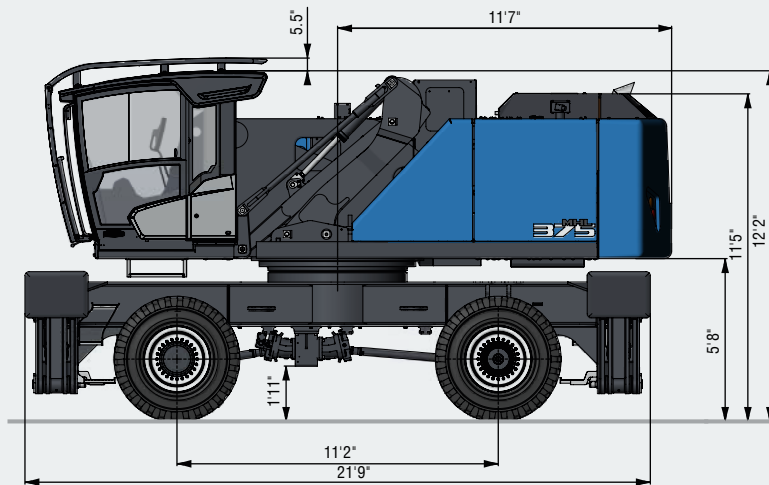
All dimensions in ft & in



DIMENSIONS

WITH VERTICALLY ADJUSTABLE CABIN

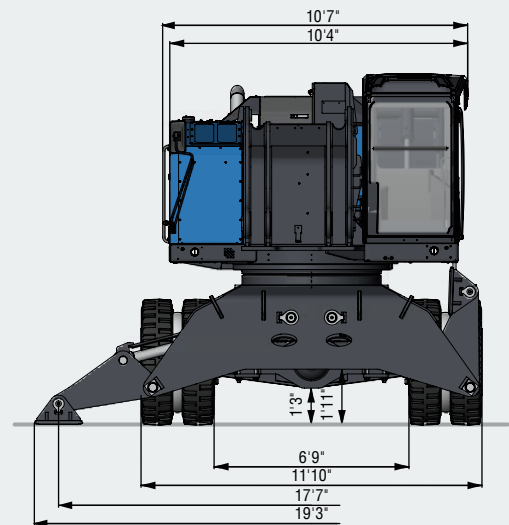
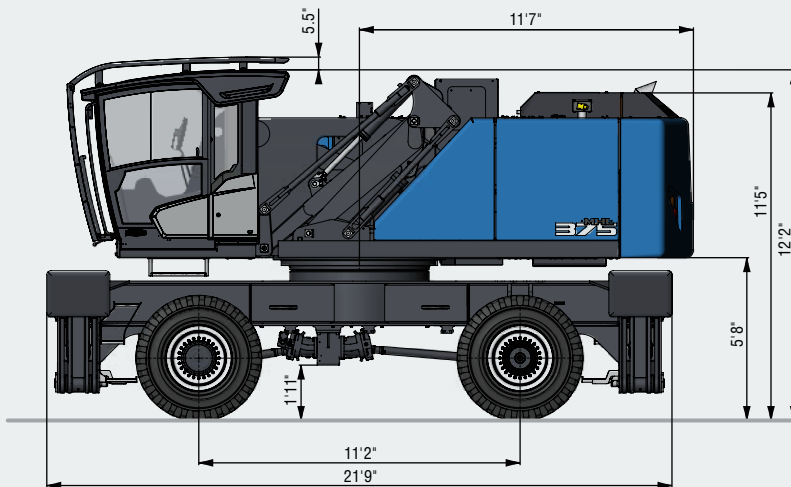
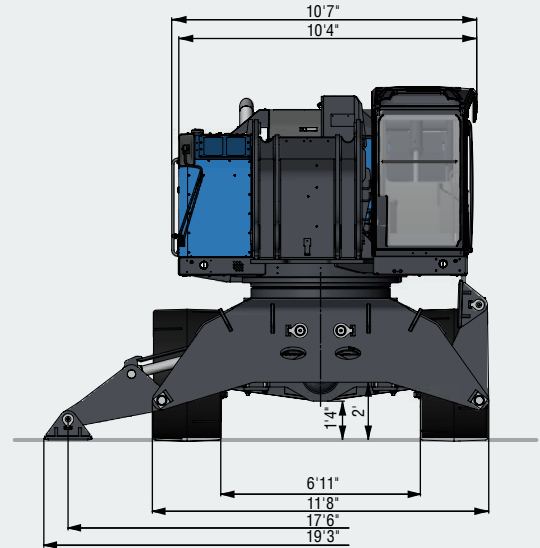
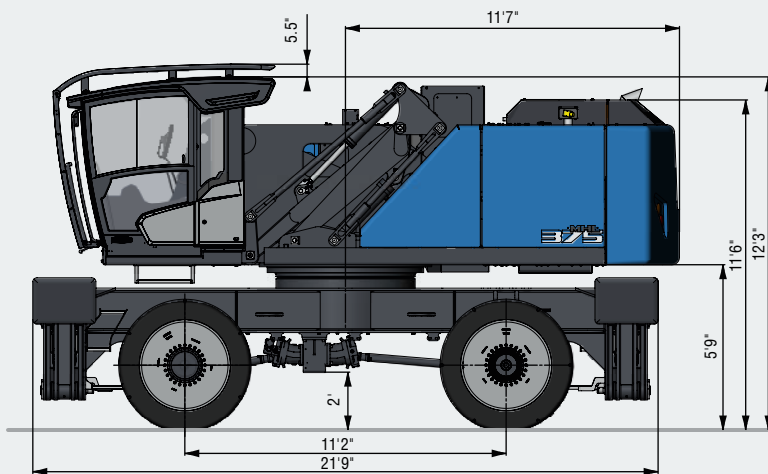
All dimensions in ft & in



DIMENSIONS

WITH VERTICALLY AND HORIZONTALLY ADJUSTABLE CABIN

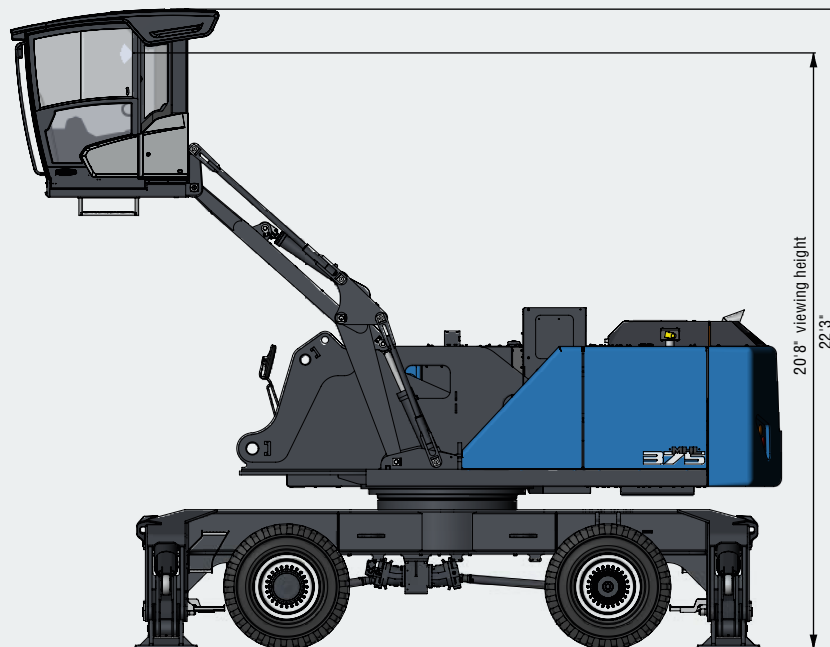
All dimensions in ft & in



DIMENSIONS

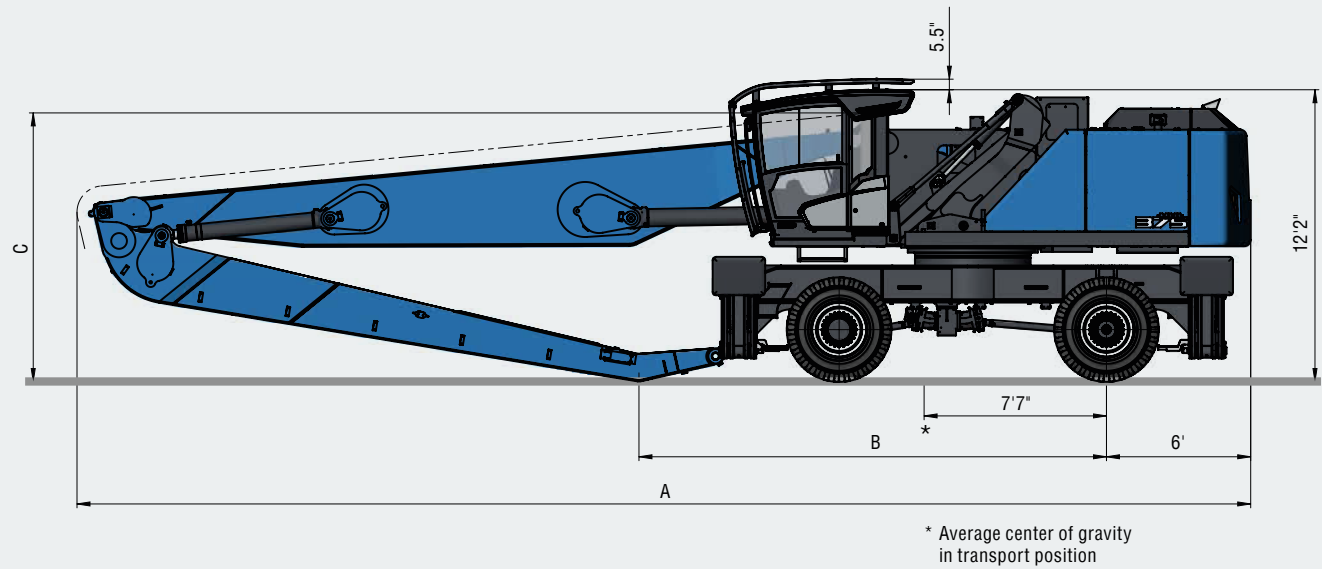
WITH VERTICALLY AND HORIZONTALLY ADJUSTABLE CABIN



All dimensions in ft & in



TRANSPORT DIMENSIONS

All dimensions in ft & in

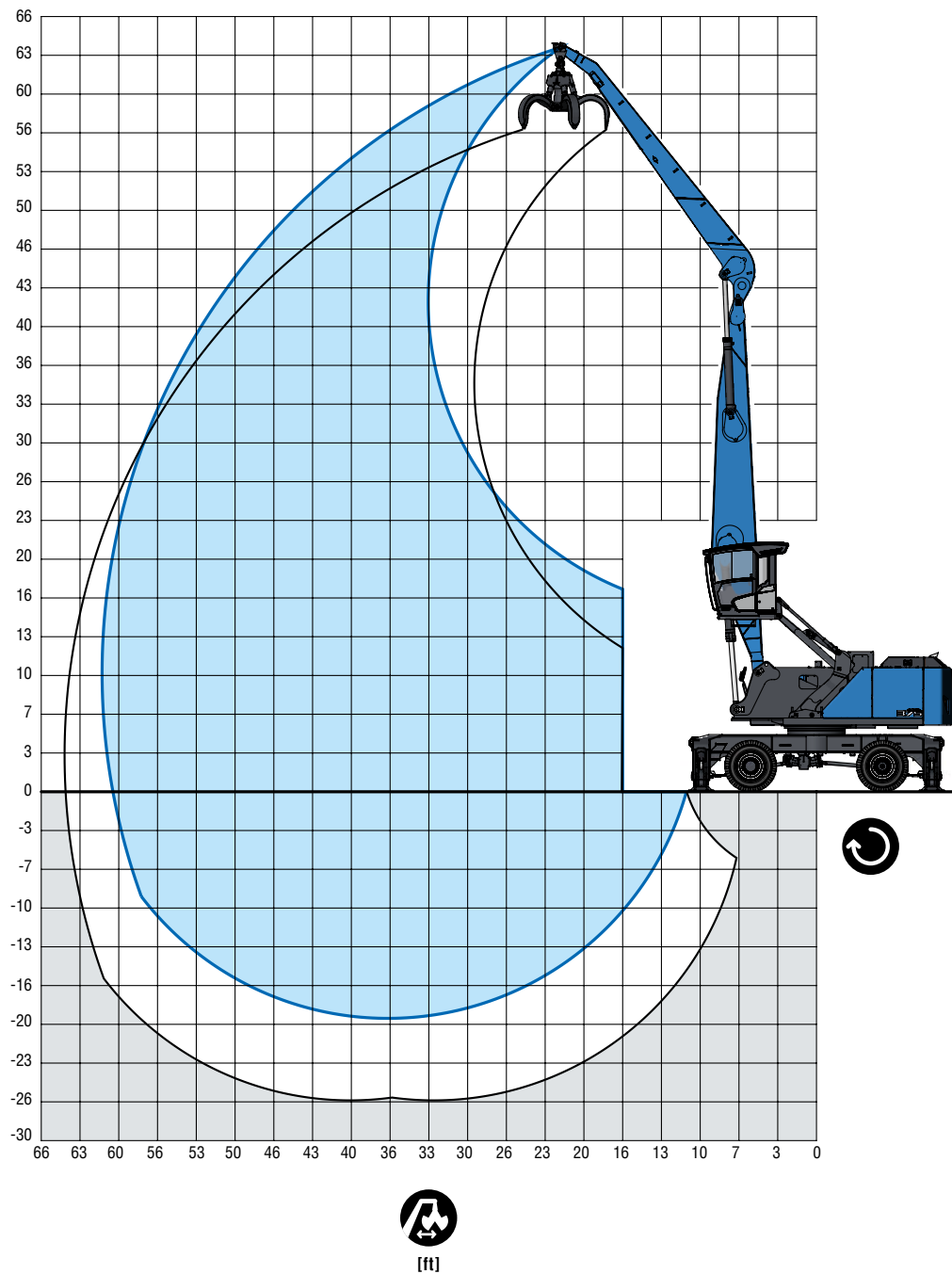


	 59'	 65'7"
A	49'	55'4"
B	19'6"	25'10"
C	11'3"	11'3"





59' WITH DIPPER STICK






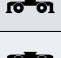
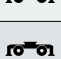








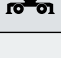


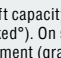
LOADING EQUIPMENT

Boom	31'6"
Dipper stick	26'3"
Cactus grab	1 yd ³

RECOMMENDED ATTACHMENTS

Recommended attachments upon request

LIFTING CAPACITY

		20 ft	25 ft	30 ft	35 ft	40 ft	45 ft	50 ft	55 ft	60 ft
60 ft				17,100° (17,100°)						
55 ft					17,900° (17,900°)					
50 ft					21,200° (21,200°)	17,700° (17,700°)	11,900° (11,900°)			
45 ft					22,700° (22,700°)	20,800° (20,800°)	16,900° (16,900°)			
40 ft					22,700° (22,700°)	20,800° (20,800°)	19,200° (19,200°)	15,100° (15,100°)		
35 ft					23,000° (23,000°)	21,000° (21,000°)	19,300° (19,300°)	17,900° (17,900°)	11,500° (11,500°)	
30 ft					23,700° (23,700°)	21,400° (21,400°)	19,500° (19,500°)	17,900° (17,900°)	15,100° (15,100°)	
25 ft				28,000° (28,000°)	24,600° (24,600°)	22,000° (22,000°)	19,900° (19,900°)	18,100° (18,100°)	16,500° (16,500°)	
20 ft			35,800° (35,800°)	30,000° (30,000°)	25,800° (25,800°)	22,700° (22,700°)	20,300° (20,300°)	18,300° (18,300°)	16,200° (16,200°)	11,200° (11,200°)
15 ft		44,100 (44,100)	39,400° (39,400°)	32,000° (32,000°)	27,100° (27,100°)	23,500° (23,500°)	20,800° (20,800°)	18,500° (18,500°)	15,900° (16,600°)	12,900° (12,900°)
10 ft		44,100 (44,100)	42,400° (42,400°)	33,800° (33,800°)	28,100° (28,100°)	24,100° (24,100°)	21,100° (21,100°)	18,100° (18,600°)	15,600° (16,500°)	13,500° (13,800°)
5 ft		23,100° (23,100°)	44,100 (44,100)	34,900° (34,900°)	28,800° (28,800°)	24,500° (24,500°)	20,600° (21,200°)	17,600° (18,500°)	15,300° (16,200°)	13,400° (13,700°)
0 ft		18,600° (18,600°)	39,600° (39,600°)	35,000° (35,000°)	28,700° (28,700°)	23,700° (24,400°)	20,100° (21,000°)	17,200° (18,200°)	15,000° (15,600°)	12,200° (12,200°)
-5 ft		18,700° (18,700°)	32,700° (32,700°)	34,100° (34,100°)	27,900° (28,200°)	23,200° (23,800°)	19,700° (20,300°)	17,000° (17,400°)	14,600° (14,600°)	
-10 ft		20,000° (20,000°)	31,200° (31,200°)	31,900° (31,900°)	26,600° (26,600°)	22,400° (22,400°)	19,000° (19,000°)	16,000° (16,000°)	12,800° (12,800°)	
-15 ft			31,900° (31,900°)	28,500° (28,500°)	24,000° (24,000°)	20,200° (20,200°)	16,900° (16,900°)	13,700° (13,8700°)		
max. 60'4"										
10 ft										9,900° (9,900°)



Important notes regarding the load capacities

The lift capacity values are stated in imperial pounds (lbs). In accordance with ISO 10567 the lift capacity values represents 75% of the static tipping loads or 87% of the hydraulic lifting force (marked°). On solid and level ground the values apply to a swing range of 360°. The (...) values apply in the longitudinal direction of the undercarriage. The weights of the attached load hoisting equipment (grab, load hook, etc.) must be deducted from the lift capacity values. The working load of the lifting device must be observed. In accordance with the EN 474-5 for object handling application hose rupture valves on the boom and stick cylinders, an overload warning device and the lift capacity table in the cab are required. For object handling application the machine has to be supported on a level ground.



Reach



Engine power



Service weight without attachments



Center of rotation



Height



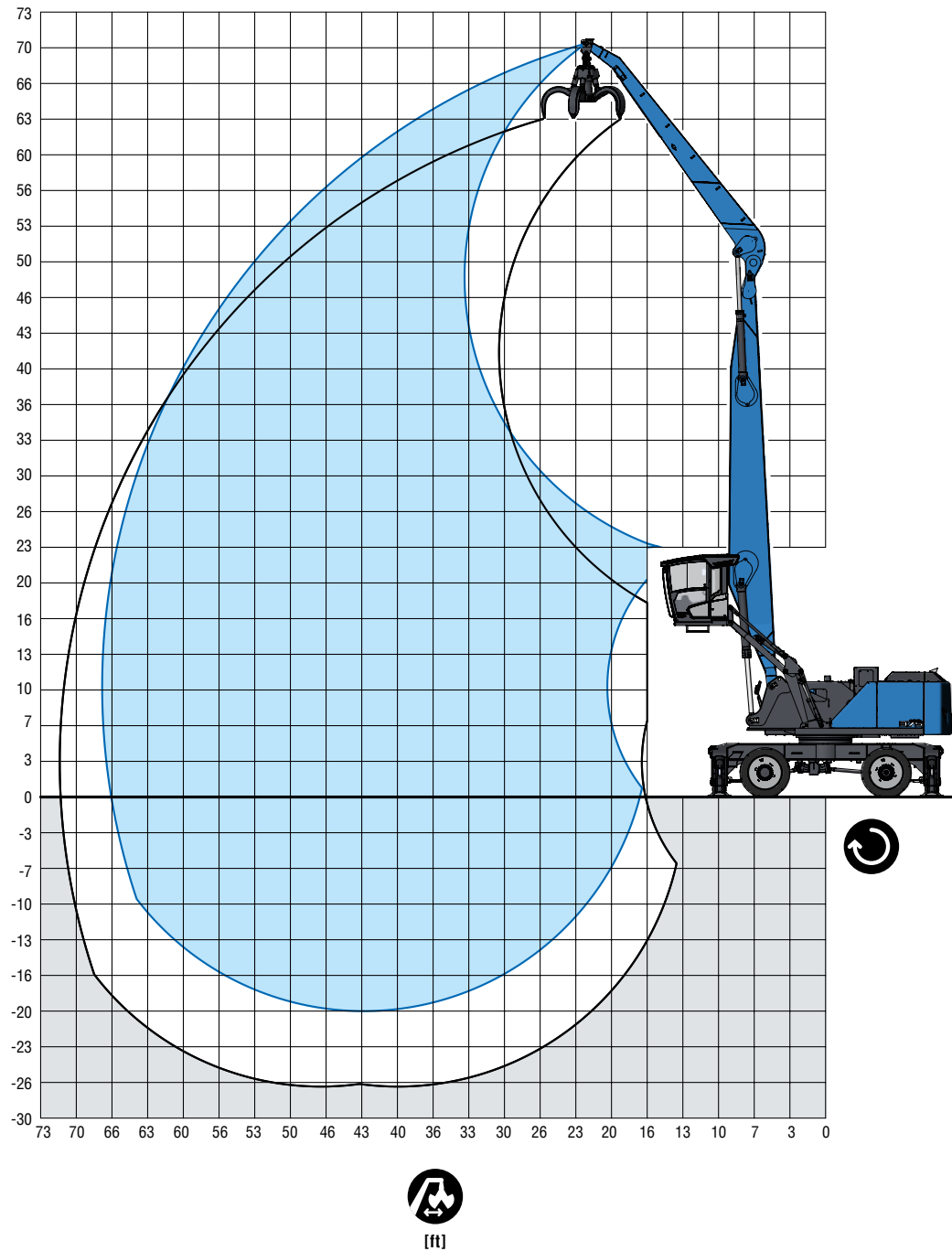
Undercarriage



4-point supported



65'7" WITH DIPPER STICK













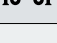

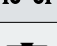

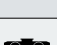
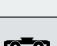





LOADING EQUIPMENT

Boom	37'9"
Dipper stick	26'3"
Cactus grab	1 yd ³

RECOMMENDED ATTACHMENTS

Recommended attachments upon request

LIFTING CAPACITY

											
		20 ft	25 ft	30 ft	35 ft	40 ft	45 ft	50 ft	55 ft	60 ft	65 ft
65 ft				19,200° (19,200°)	14,900° (14,900°)						
60 ft					19,700° (19,700°)	16,000° (16,000°)					
55 ft					22,100° (22,100°)	19,700° (19,700°)	16,000° (16,000°)				
50 ft					22,000° (22,000°)	19,600° (19,600°)	17,700° (17,700°)	15,300° (15,300°)			
45 ft					22,000° (22,000°)	19,600° (19,600°)	17,600° (17,600°)	16,000° (16,000°)	13,600° (13,600°)		
40 ft					22,200° (22,200°)	19,700° (19,700°)	17,700° (17,700°)	16,000° (16,000°)	14,600° (14,600°)	10,300° (10,300°)	
35 ft				26,300° (26,300°)	22,700° (22,700°)	20,000° (20,000°)	17,800° (17,800°)	16,100° (16,100°)	14,600° (14,600°)	13,000° (13,300°)	
30 ft				27,300° (27,300°)	23,300° (23,300°)	20,400° (20,400°)	18,100° (18,100°)	16,200° (16,200°)	14,700° (14,700°)	13,000° (13,300°)	
25 ft		41,200° (41,200°)	34,900° (34,900°)	28,500° (28,500°)	24,100° (24,100°)	20,800° (20,800°)	18,400° (18,400°)	16,400° (16,400°)	14,700° (14,700°)	13,300° (13,300°)	11,400 (11,600°)
20 ft		44,100 (44,100)	37,200° (37,200°)	29,800° (29,800°)	24,800° (24,800°)	21,300° (21,300°)	18,600° (18,600°)	16,500° (16,500°)	14,700° (14,700°)	13,000 (13,200°)	11,200 (11,700°)
15 ft		17,300° (17,300°)	39,100° (39,100°)	30,800° (30,800°)	25,500° (25,500°)	21,700° (21,700°)	18,800° (18,800°)	16,600° (16,600°)	14,700° (14,700°)	12,700 (13,100°)	11,000 (11,500°)
10 ft			25,900° (25,900°)	31,400° (31,400°)	25,800° (25,800°)	21,800° (21,800°)	18,900° (18,900°)	16,500° (16,500°)	14,200 (14,600°)	12,400 (12,900°)	10,900 (11,200°)
5 ft		6,900° (6,900°)	17,600° (17,600°)	31,200° (31,200°)	25,700° (25,700°)	21,700° (21,700°)	18,600 (18,700°)	16,000 (16,300°)	13,800 (14,300°)	12,100 (12,500°)	10,700° (10,700°)
0 m		8,500° (8,500°)	16,100° (16,100°)	30,100° (30,100°)	25,100° (25,100°)	21,200 (21,300°)	18,000 (18,300°)	15,500 (15,900°)	13,500 (13,800°)	11,900 (12,000°)	10,000° (10,000°)
-5 ft		10,600° (10,600°)	16,600° (16,600°)	27,800° (27,800°)	23,900° (23,900°)	20,300° (20,300°)	17,500° (17,500°)	15,100 (15,200°)	13,100° (13,100°)	11,100° (11,100°)	8,800° (8,800°)
-10 ft			18,000° (18,000°)	25,600° (25,600°)	22,000° (22,000°)	18,900° (18,900°)	16,300° (16,300°)	14,100° (14,100°)	12,000° (12,000°)	9,900° (9,900°)	
-15 ft				22,200° (22,200°)	19,500° (19,500°)	16,900° (16,900°)	14,600° (14,600°)	12,500° (12,500°)	10,400° (10,400°)		
max. 66'5"											
10 ft											10,000° (10,000°)



Important notes regarding the load capacities

The lift capacity values are stated in imperial pounds (lbs). In accordance with ISO 10567 the lift capacity values represents 75% of the static tipping loads or 87% of the hydraulic lifting force (marked°). On solid and level ground the values apply to a swing range of 360°. The (...) values apply in the longitudinal direction of the undercarriage. The weights of the attached load hoisting equipment (grab, load hook, etc.) must be deducted from the lift capacity values. The working load of the lifting device must be observed. In accordance with the EN 474-5 for object handling application hose rupture valves on the boom and stick cylinders, an overload warning device and the lift capacity table in the cab are required. For object handling application the machine has to be supported on a level ground.



Reach



Engine power



Service weight without attachments



Center of rotation



Height



Undercarriage



4-point supported

MODULAR SYSTEM

ATTACHMENTS



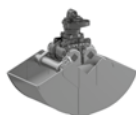
Cactus grab



Timber grapple



Magnet plate



Clamshell grab



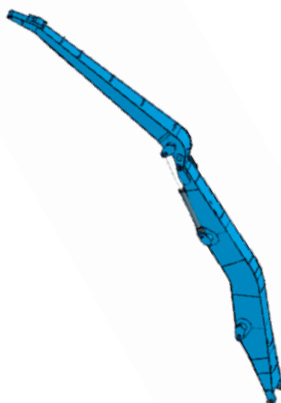
Load hook



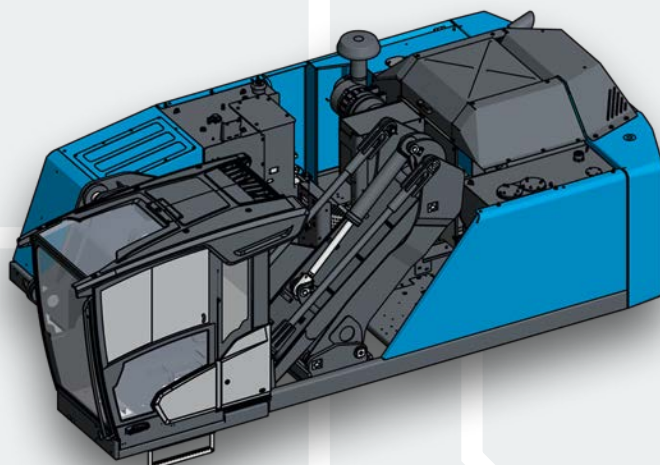
LOADING EQUIPMENT



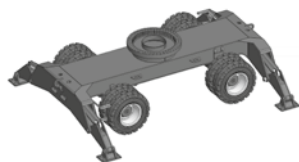
Straight



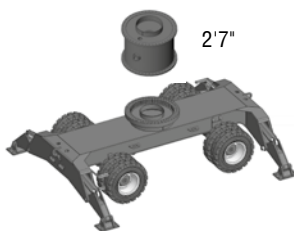
Banana boom



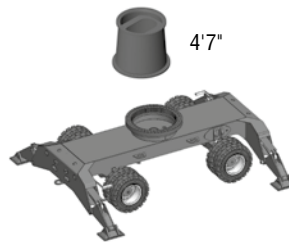
UNDERCARRIAGES



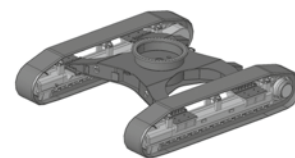
Standard-undercarriage



Standard-undercarriage

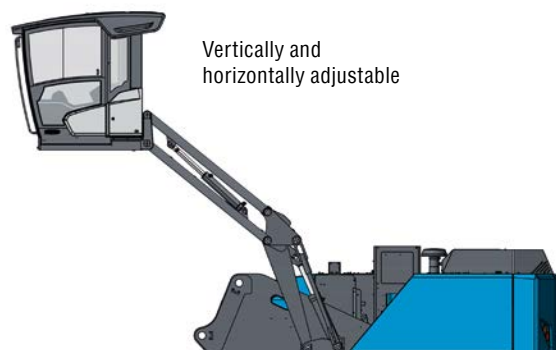
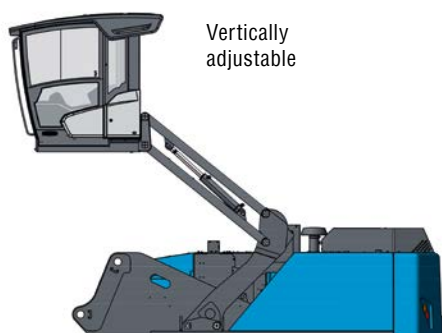


XL-undercarriage

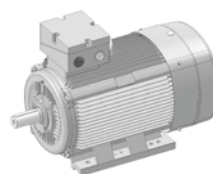
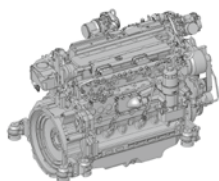


Crawler

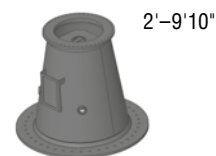
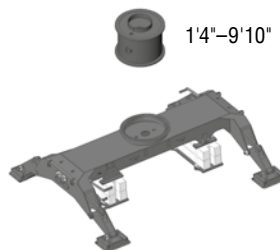
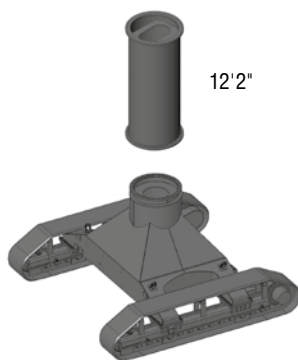
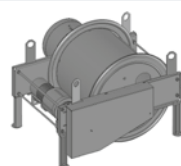
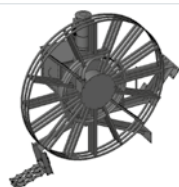
CAB SYSTEMS



ENGINES



OPTIONS





FUCHS[®]
A TEREX BRAND

WORKS FOR YOU.[™]

www.terex-fuchs.com

March 2020. Product specifications and prices are subject to change without notice or obligation. The photographs and/or drawings in this document are for illustrative purposes only. Refer to the appropriate Operator's Manual for instructions on the proper use of this equipment. Failure to follow the appropriate Operator's Manual when using our equipment or to otherwise act irresponsibly may result in serious injury or death. The only warranty applicable to our equipment is the standard written warranty applicable to the particular product and sale and Terex makes no other warranty, express or implied. © Terex Corporation 2020 - Terex, the Terex Crown design, Fuchs and Works For You are trademarks of Terex Corporation or its subsidiaries.

Terex[®] Deutschland GmbH | Industriestraße 3 | 76669 Bad Schönborn | Germany | Fon: +49 (0) 7253 84-0 | Fax: +49 (0) 7253 84-102 | info@terex-fuchs.com

