

MATERIAL HANDLER | F-SERIES

# RHL350



**215** hp



up to **107,365** lbs



up to **52.5** ft



**FUCHS**  
A TEREX BRAND

# TECHNICAL DATA

## SERVICE WEIGHT WITHOUT ATTACHMENT

RHL350 F 83,776–93,696 lbs

Undercarriage mechanically adjustable

RHL350 F 97,444–107,365 lbs

Undercarriage hydraulically adjustable

## DIESEL ENGINE

Manufacturer and model Deutz TCD 6.1 L6

Design 6-cylinder inline

Engine control EMR IV

Type 4-stroke diesel, common rail direct injection, turbo-charger, controlled exhaust gas recirculation, diesel particulate filter with automatic regeneration and SCR-cat automatic regenerationcat

Engine output 215 hp

Nominal speed 2,000 rpm

Displacement 372.2 cui

Cooling system Combi-cooler (coolant/ charge air) with fan speed control, system; optional reversing function

Emission standard Stage IV/EPA Tier final

Air filter design Two-stage filter with safety cartridge and pre-separator with discharge valve

Usable tank capacity 83.2 gal Diesel + 8,5 gal Ad Blue

## ELECTRICAL SYSTEM

Generator 28 V / 100 A

Operating voltage 24 V

Battery 2 × 12 V / 110 Ah / 750 A (in accordance with EN)

Lighting set 2 × H3 headlamps, turn indicators and tail lights

Option 17.4 hp or 26.8 hp DC generator with controls and insulation monitoring, driven by V-belt direct from diesel engine

## SLEWING GEAR

Swing gear Internally toothed double-row ball ring gear

Drive 3-stage planetary gear with integrated multi-disc brake

Upper carriage swing speed Infinitely variable from 0–7 rpm

Swing brake Electrically operated

Max. pivot torque 59,004 lbf ft

## CRAWLER UNDERCARRIAGE

Drive 2 hydraulic drives with auto-unlocking of the brakes

Maximum speed 1st gear: 0.9 mph (1.5 km/h)  
2nd gear: 1.86 mph (3.0 km/h)

Width adjustment Mechanically, hydraulically (optional)  
Working set-up: max. extended undercarriage  
Transport set-up: max. retracted undercarriage

Tracks Steel tracks, tread inducgtively hardened

Gradeability max. 30 %

Track width 23.6 inch (600 mm)

## BRAKE SYSTEM

Service brake Hydraulic single-circuit braking system acting on all four wheel pairs

Parking brake Electrically operated disc brake on transmission acting on both front and rear axles

## HYDRAULIC SYSTEM

LINDE mobile hydraulic system with load limit control and fuelsaving power demand control. Separate hydraulic oil cooler, temperature-controlled fan speed

Hydraulic oil filter Integral return filter in oil tank for work hydraulics, with 3,000 operating hours service interval

Max. pump capacity 2 × 87 gal/min

Max. operating pressure 4,641 / 5,211 psi

Hydraulic oil tank 141 gal usable tank capacity

## OPERATOR'S CAB

Cab raising system Infinitely variable hydraulic height-adjustment with eye level up to 18.4 ft above ground. Flexibly mounted. Sound-insulated; heat-insulating glass panoramic windows for optimum all-around view; windshield with pull-down sunblind that slides under the cab roof; viewing window on cab roof; sliding window in cab door; height and tilt-adjustable steering column

Heating Infinitely variable heating with 3-speed fan, 6 adjustable defroster nozzles (hot water system)

Operator's seat Air-cushioned high-comfort seat with integrated headrest, safety belt and lumbar support, seat heating with integrated a/c function optional. Seat position, seat inclination and seat cushion multi-adjustable relative to position of armrests and pilot control units, allowing comfortable operation

Monitoring Ergonomic layout; glare-free instrumentation. Multifunction display, automatic monitoring and recording of abnormal operating conditions (including all hydraulic oil filters, hydraulic oil temperature (cold / hot) – coolant temperature and charge air temperature – condition of cooling system, diesel particulate filter load), visual and audible warning indication with shutdown of pilot control/ engine power reduction. Diagnosis of individual sensors available via the multi-function display. Rear view camera"

Air conditioning Automatic

Acoustic power level LW(A) = 101 dB(A) (guaranteed)  
in accordance with directive 2000/14 EC;  
max allowable under 2000/14 EC = 104 dB(A)

## OFFICIAL HOMOLOGATION

Certified in accordance with CE regulations



# EQUIPMENT

## ENGINE

	Standard	Option
Intercooler	●	
Direct electronic fuel injection/common rail	●	
Automatic idle	●	
Engine preheating		●
Engine diagnostics interface	●	
System-controlled fan drive with fan speed monitoring	●	

## CRAWLER UNDERCARRIAGE

Mechanically adjustable	●	
Hydraulically adjustable		●
Triple grousers	●	
Flat shoes		●
Tool box	●	
Special paint		●

## UPPERCARRIAGE

Separate cooling systems	●	
Cooling system fan speeds controlled by operating parameters	●	
Reversible fan		●
Automatic central lubrication system	●	
Rear view camera	●	
Travel alarm		●
Electric refuelling pump		●
Lighting protection		●
Special paint		●
Cyclone prefilter		●

## CAB

Hydraulically adjustable cab	●	
3-layer glass with protection film	●	
Sliding window in cab door	●	
Glazed roof panel	●	
Reinforced glass (windscreen and roof panel)		●
Windscreen washer system	●	
Windscreen washer system (lower portion of windscreen)		●

## CAB

	Standard	Option
Joystick steering and driving	●	
Steering and driving per foot pedal		●
Air-cushioned operator's seat with headrest, seatbelt, and lumbar support	●	
Seat heating with integrated A/C function		●
Automatic air conditioning system	●	
Independent heating system		●
Multi-function display	●	
Document clip	●	
Protective grilles to front and roof		●
12 V transformer		●
Radio CD & USB		●
12 V socket		●
Fire extinguisher, dry powder		●
Rotating beacon		●

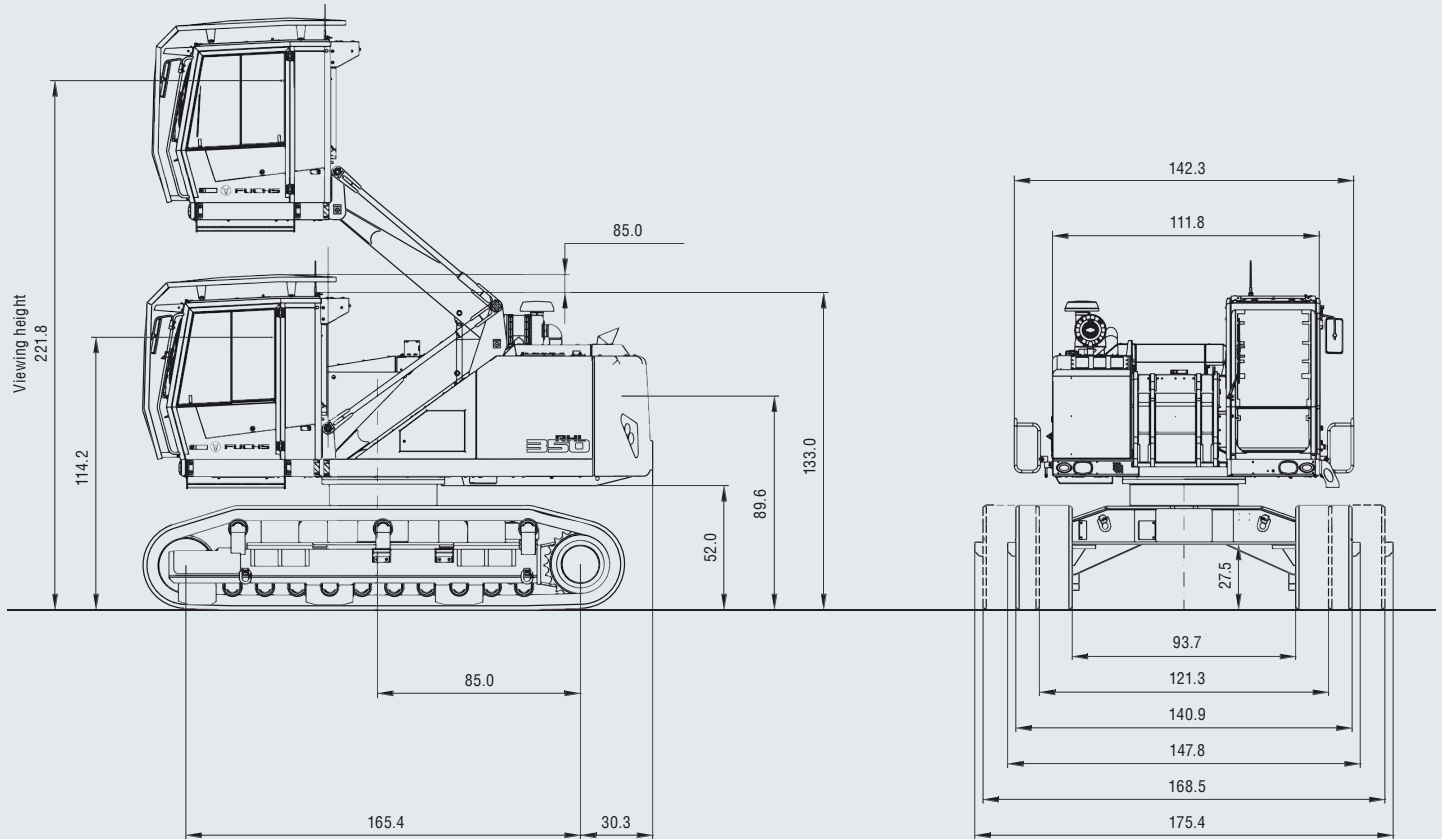
## EQUIPMENT

13 kW DC generator with controls		●
20 kW DC generator with controls		●
Close proximity range limiter for dipperstick	●	
Coolant and hydraulic oil level monitoring system	●	
Filter system for attachments		●
Hose rupture value for boom cylinder		●
Hose rupture value for stick cylinder		●
Overload and work area control		●
Overload warning device		●
Quick coupling on dipperstick	●	
Dipperstick impact protection		●
Active cyclone prefilter (TOP AIR)		●
Hydraulic oil preheating 230 V		●
Float switch		●
Lubrication of the grab suspension by central lubrication system	●	
Light packages H3 or LED		●
H3 front headlights	●	
Fuchs Telematics System	●	

Further optional equipment available on request!

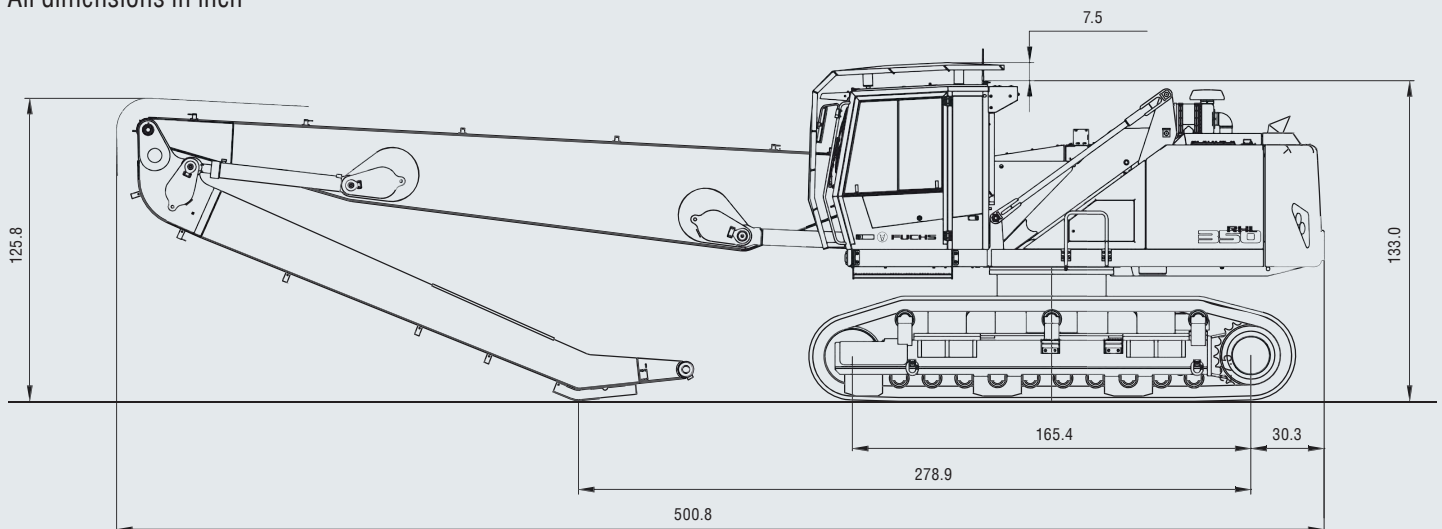
# DIMENSIONS

All dimensions in inch



# TRANSPORT DIMENSIONS

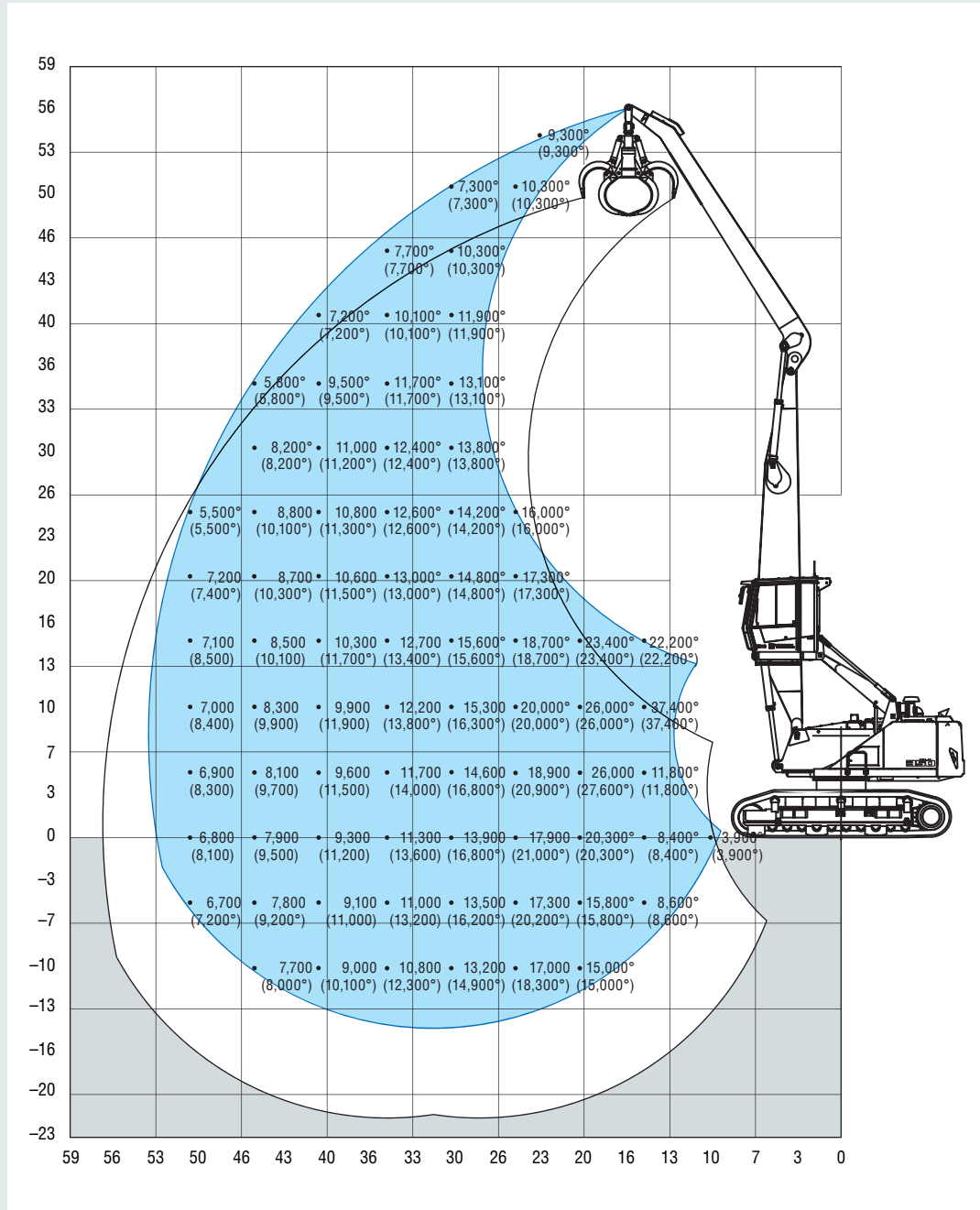
All dimensions in inch





# WORKING RANGE AND LIFTING CAPACITIES

## REACH 52.5 FT WITH DIPPER STICK



### Loading equipment

Boom 27.8 ft

Dipper stick 20.3 ft

Cactus grab

### Recommended attachments

Fuchs cactus grab 21.2 ft<sup>3</sup>  
Open or half-closed

Fuchs cactus grab 28.3 ft<sup>3</sup>  
Open or half-closed

Fuchs magnetic plate MP 1350  
dia = 53.15 in with 40.2 hp  
magnet system

Clamshell grab 49.4 ft<sup>3</sup>  
Density of materials handled  
up to 99.8 p/ft<sup>3</sup>

Clamshell grab 70.6 ft<sup>3</sup>  
Density of materials handled  
up to 49.9 p/ft<sup>3</sup>

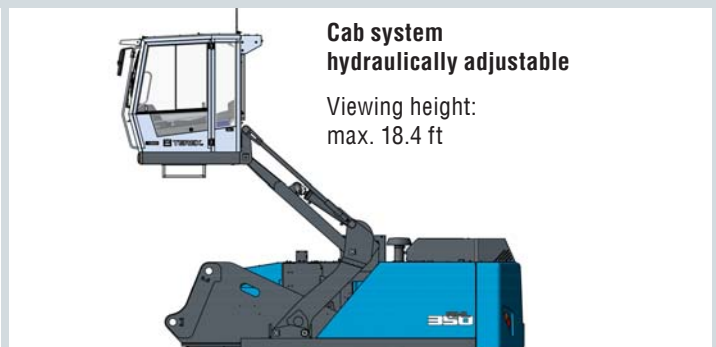
Lift hook  
44,100 lbs

The lift capacity values are stated in imperial pounds (lbs). The pump pressure is 5,221 psi. In accordance with ISO 10567 the lift capacity values represents 75% of the static tipping loads or 87% of the hydraulic lifting force (marked °). On solid and level ground the values apply to a swing range of 360°. The (...) values apply in the longitudinal direction of the undercarriage. The values for "not supported" only apply via the steering axle or the locked oscillating axle. The weights of the attached load hoisting equipment (grab, load hook, etc.) must be deducted from the lift capacity values. The working load of the lifting device must be observed. In accordance with the EN 474-5 for object handling application hose rupture valves on the boom and stick cylinders, an overload warning device and the lift capacity table in the cab are required. For object handling application the machine has to be supported on a level ground.

# MODULAR SYSTEM

Attachments		Work equipment		
furthermore Timber grab Sorting grapple Magnetic plate Load hook	Cactus grab		Work equipment straight	
	Scrap shears		Work equipment "Fuchs Quick Connect"	
	Clamshell grab		Work equipment banana boom	

## Uppercarriage RHL350



Engine		Options		
Diesel engine	Electric motor	Cable reel	Cable drum	Power Pack

Undercarriage				
Pylon up to max. 2.6 ft	Pylon up to max. 4.6 ft	Pylon up to max. 2.6 ft	Pylon up to max. 12.1 ft	Pylon up to max. 12.1 ft
Mobile: Standard-undercarriage	Mobile special: For extended undercarriage	Crawler: Standard-undercarriage	Crawler: XL-undercarriage	Pedestal undercarriage







**FUCHS**  
A TEREX BRAND



# GET A HANDLE ON FLEET MANAGEMENT.

## Fuchs Telematics System: Recognize and Optimize Potential.

**The Fuchs Telematics system: know exactly how and where everything is running.**

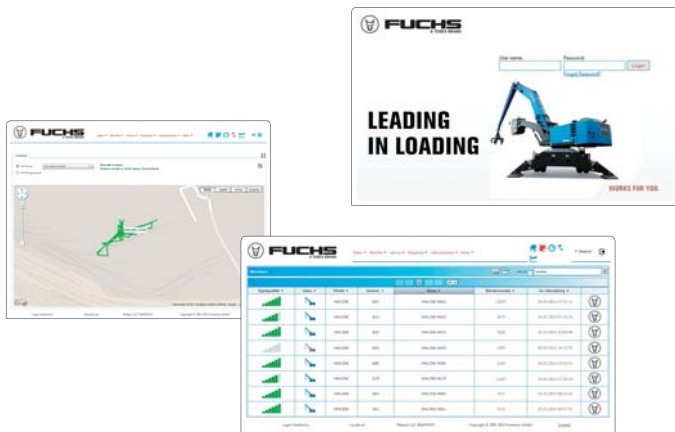
The system offers a modern solution to help you analyze and optimize the efficiency of your machines. It records and communicates valuable information on the operating status of each individual machine. Where are the machines? How are they working? Is a service check pending? Take advantage of this advanced software and get a handle on your fleet management with the tool that connects for you.

### ALL-IN-ONE MACHINE MANAGEMENT. EVERYTHING AT A GLANCE: OPERATING DATA, MACHINE STATUS, GPS DATA

**Record, display, and analyse data: high efficiency through precise information**

- Available online anywhere and at any time\*: comprehensive information on the GPS location, start and stop times, fuel consumption, operating hours, maintenance status, and much more.
- User-friendly interface: displays information clearly for at a glance metrics and diagnostics. Take action before damage occurs: predetermined maintenance intervals are signaled and error messages are displayed in plain text messages.
- The Fuchs Telematics system is optionally available or can be retrofitted into existing machines to help control your operating costs and keep your machines in top shape.

\* Internet connection required



[www.terex-fuchs.com](http://www.terex-fuchs.com)

May 2016. Product specifications and prices are subject to change without notice or obligation. The photographs and/or drawings in this document are for illustrative purposes only. Refer to the appropriate Operator's Manual for instructions on the proper use of this equipment. Failure to follow the appropriate Operator's Manual when using our equipment or to otherwise act irresponsibly may result in serious injury or death. The only warranty applicable to our equipment is the standard written warranty applicable to the particular product and sale and Terex makes no other warranty, express or implied. © Terex Corporation 2016 - Terex, the Terex Crown design, Fuchs and Works For You are trademarks of Terex Corporation or its subsidiaries.

