

31 Attachment Ranges for the World's Safest Skid Steer

Whatever the job, whatever the season

JCB's new range of more than 31 types of attachments gives you ultimate versatility. From buckets to breakers and snow blades to cold planers, optional JCB 7-way multi-function joysticks allow you to easily use any of them to their full potential. This means you can use your JCB Skid Steer all year round from landscaping to snow clearing. For ultimate convenience, a hydraulic quickhitch option lets you change attachments without leaving your cab. Alternatively, a mechanical quickhitch system is offered as standard. And whichever attachments you choose, you can rest assured they've been designed to stringent JCB standards and built to perfectly complement your machine.

Safety is our priority

The safety of the skid steer operator is paramount. While attachments are essential to increasing a skid steer's utilization, they can also prove to be very hazardous. The JCB Skid Steer's unique side entry door means you no longer have to clamber over attachments to get in through the front window. Thanks to the unique PowerBoom design, JCB Skid Steers offer unparalleled 270° visibility, that's 60% more than ordinary skid steers. And with a cab that's up to 46% larger, and quieter than any other skid steer in addition to excellent serviceability, the JCB Skid Steer and attachment range truly offer the complete solution.



SKID STEER ATTACHMENT RANGE

AUGERS



BALE SPEARS



BREAKERS



BROOMS, ANGLE



BROOMS, SWEEPER COLLECTOR



BRUSH CUTTERS



BUCKETS, 6-IN-1 MULTIPURPOSE



BUCKETS, GENERAL PURPOSE



BUCKETS, LANDSCAPE



BUCKETS, LIGHT MATERIAL



BUCKETS, SNOW



COLD PLANERS



DOZER BLADES



FORESTRY CUTTING HEADS



FORKS, MANURE



FORKS, PALLET



GRAPPLES, BRUSH



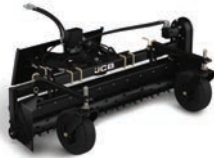
GRAPPLES, SCRAP



RAKES, AUTO



RAKES, LANDSCAPE POWER



RAKES, LANDSCAPE PREPARATOR



ROCK SAWS



SILAGE DEFACERS



SNOW BLADES



SNOW BLOWERS



SNOW PUSHERS



STUMP GRINDERS



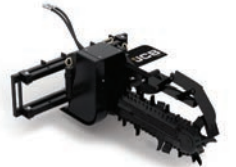
TILLERS



TREE SPADES



TRENCHERS



VIBRATORY ROLLERS



From Breakers and Buckets to Rakes and Rollers, JCB's Attachments Keep You Productive Year Round



AUGERS

- JCB augers provide high torque allowing you to drill with speed and precision in the toughest of ground conditions.
- Heavy-duty planetary gear reduction design provides long life with minimal service and maintenance costs.
- The auger drive unit is completely sealed in an oil bath for continuous lubrication.
- Standard and High Flow models are available with a wide range of auger bits to suit various applications.



BROOMS, ANGLE

- JCB angle brooms provide clean up solutions for a variety of applications including street and parking lot maintenance, construction and industrial site clean-up and snow removal.
- Manual or hydraulic angle adjustment allows 30° angle left or right.
- 32" diameter wire and poly brush construction provides long life.
- 60", 72" and 84" models are available.



BALE SPEARS

- JCB bale spears are designed and built to lift, transport and stack round bales of organic materials.
- Provides a cost effective and efficient way to complete your job.
- Constructed of a heavy-duty frame with replaceable tines.
- Designed to keep bales close to machine for safe handling.
- Available to be used across the entire skid steer product range.



BROOMS, SWEEPER COLLECTOR

- JCB sweeper collectors make easy work of site clean up by sweeping, collecting and dumping dirt and debris.
- High power direct drive motors deliver excellent torque for greater performance.
- Large bucket capacities allow for extended operation before emptying is required.



BREAKERS

- JCB breakers feature outstanding impact energy and compact construction for class leading power to weight performance.
- Silenced design is standard for quieter operation.
- Sealed for life accumulator reduces service costs.
- Stainless steel piston eliminates corrosion and offers greater protection to the seals.
- Large diameter tools make greater use of the impact energy for increased productivity.



BRUSH CUTTERS

- The JCB brush cutter mulches tall grass, brush and small trees up to 4" in diameter.
- High speed, dual rotation blades provide high performance cutting.
- Features side discharge with flow control baffle and stump jumper to protect gear box from unexpected impacts.
- Models include 72" or 78" cutting width.
- Standard and High Flow configurations are available.



BUCKETS, 6-IN-1 MULTIPURPOSE

- JCB multipurpose buckets bring increased versatility and productivity to your job site.
- Dig, load, spread, grade, grab and doze - all with one tool.
- Long floor design for excellent visibility to cutting edge.
- Constructed of high tensile material for reduced weight and higher strength.
- Pre-drilled to accept cutting edge or toothbar.
- Range of sizes and capacities from 60" to 84" wide.



BUCKETS, LIGHT MATERIAL

- Ideal for moving large amounts of light weight material such as mulch, grain, or feed.
- Rolled inside design allows for easy clean out.
- Wear plating across bottom prevents damage to bucket floor.
- Variety of sizes available ranging 75" to 96" with capacity from 20 to 54 cu ft.



BUCKETS, DIRT / GENERAL PURPOSE

- Designed with a shorter bucket floor to provide maximum breakout forces while maintaining great visibility to the edge.
- High strength steel construction and high tensile side cutters to the front of the bucket provide strong front edge support.
- Pre-drilled to accept cutting edge or toothbar.
- Range of sizes and capacities from 54" to 84" wide.



BUCKETS, SNOW

- JCB snow buckets allow you to efficiently move large volumes of snow and other loose materials.
- The cut out back plate provides greater visibility to the front edge of the bucket.
- JCB snow buckets are available in both medium-duty and heavy-duty versions ranging from 54" to 108" wide.
- Range of capacities available from .95 to 2.7 cu yd.



BUCKETS, LANDSCAPE

- The long bucket floor and low back design offers higher capacities and provides excellent visibility to the cutting edge.
- Great for carrying and loading materials as well as leveling and grading applications.
- Pre-drilled to accept cutting edge or toothbar.
- Range of sizes and capacities from 54" to 84" wide.



COLD PLANERS

- JCB planers provide milling solutions for damaged concrete or asphalt surfaces caused by frost heaps, cracks, or potholes.
- All models feature electro-hydraulic adjustment of side shift, tilt and depth functions with the JCB multi-function controls.
- The planetary drive unit provides high torque to the drum for maximum productivity.
- Six models are available including one Standard Flow and five High Flow versions ranging from 12" to 40" wide.



DOZER BLADES

- The JCB dozer blade will convert your skid steer or track loader into a compact bulldozer.
- Tilt and angle functions are easily adjusted during operation with the JCB multi-function controls.
- Blade angles 30° left or right of center with 10° of tilt up or down from horizontal.
- Available in 84" and 96" wide models.



FORESTRY CUTTING HEADS

- The powerful JCB forestry cutter shreds and mulches hardwood trees up to 8" in diameter.
- Extreme-duty design utilizes a high output variable displacement motor for maximum productivity.
- Hydraulically adjustable deflector door provides control of material discharge and processing size.
- In-line hydraulic oil cooler reduces heat in the hydraulic system for efficient operation.



FORKS, MANURE

- The manure fork with grapple is ideal for handling hay and manure as well as cleaning up brush and limbs.
- Grapple clamps hold load in place, reducing spillage while transporting material.
- Designed to provide great visibility to end of fork tines.
- Available in 60", 66", 72" and 84" wide models.



FORKS, PALLET

- Pallet forks allow you to handle palletized items and various construction materials with ease.
- Heavy-duty rail style forks with locking position pins provide adjustable tine spacing.
- Heavy gauge load guard provides excellent see through visibility while the smooth surface prevents damage to the load.
- Available in 42" and 48" fork tine lengths.



GRAPPLES, BRUSH

- Brush grapples are ideal for removing brush and limbs in site preparation jobs or removing debris in clean up applications.
- Debris and brush are easily removed while dirt stays on site by falling between the tines.
- Heavy-duty construction and cylinder guards for increased protection and durability in harsh applications.
- Available in 60", 66", 72", 78" and 84" wide models.



GRAPPLES, SCRAP

- The scrap grapple is an excellent tool for handling irregularly shaped materials in construction and industrial applications.
- The solid bottom bucket and dual, independent clamp design holds trash, scrap and bulky materials securely in place.
- Heavy-duty construction and cylinder guards provide increased protection and durability in harsh applications.
- Available in 60", 66", 76" and 82" wide models.



RAKES, AUTO

- The auto rake levels, grooms, and finishes the soil while breaking up clods for seeding and sodding applications.
- Rocks ranging from 3/4" to 6" in diameter are picked up and collected in the hopper.
- Debris is dumped quickly by raising the loader arms and opening the hydraulically operated front shroud.
- Available in 66" and 76" raking widths.



RAKES, LANDSCAPE POWER

- The landscape power rake lets you prepare the ideal seedbed in preparation for seed or sod.
- Operates in forward and reverse allowing quick seedbed preparation.
- Angles 20° for windrowing debris to the left or right.
- Other applications include grading and shaping, reconditioning hard soil, drying out muddy job sites and trench restoration.
- Models include 60", 72", 84" and 90" raking widths.



RAKES, LANDSCAPE PREPARATOR

- The preparator rake is a versatile landscape tool that tills and prepares soil for seeding while picking up rocks and debris.
- Bi-directional drum tills up to 2- 1/2 ft deep and allows operation in forward or reverse for increased productivity.
- The perforated bucket collects debris and rocks from 1" to 20" while soil is sifted through the bucket floor.
- Available in 66" and 76" raking widths.



ROCK SAWS

- The JCB rock saw allows you to perform slot cutting in pavement and asphalt for utility applications such as gas, water, sewer and electrical installations or repair.
- The high output steel planetary drive delivers high torque for excellent productivity.
- Hydraulically adjusted depth and side shift functions are easily operated from inside the cab with the JCB multi-function controls.



SILAGE DEFACERS

- The JCB silage defacer quickly and efficiently loosens and removes silage from compacted bunkers.
- Maintains smooth compacted bunker face to reduce spoilage.
- The open frame design provides great visibility to the face of the bunker and the inboard mounted motor allows cutting next to adjacent bunker walls.
- Provides a 96" wide cutting width.



SNOW BLOWERS

- The JCB snow blower range features 2 stage design with the ability to throw snow as far as 45 ft.
- A poly-lined chute and deflector are easily adjusted to direct the snow discharge using the JCB multi-function controls.
- The 25" (Standard Flow) and 36" (High Flow) shroud openings allow high volumes of snow to be moved quickly.
- Available in 60", 72", 78" and 84" working width models.



SNOW BLADES / SNOW PUSHERS

- The JCB snow blade allows you to efficiently clear snow from sidewalks, driveways, and parking lots.
- Available in heavy-duty and standard-duty with manual or hydraulic angle adjustment. Nine models from 72" to 120".
- The JCB snow push (picture inset) is designed and built to push loose material forward such as snow and manure.



STUMP GRINDERS

- Eliminate the hard work of stump removal with the JCB stump grinder attachment.
- 60° of swing arc allows the operator to cover a large cutting area in a single pass for quick stump removal.
- The offset mounted swing arm design provides excellent visibility to the cutting area.
- Available in both High Flow or Standard Flow models.



TILLERS

- A JCB tiller allows you to quickly break up ground and mix soil, compost and other materials in landscaping applications.
- The bi-directional operation allows you to till the ground in forward and reverse so you can complete the job in less time.
- The JCB tiller has a dual hitch design allowing center mount or offset mount for operating next to buildings or other objects.
- Available in 52" Standard Flow, 66" and 78" High Flow models.



TREE SPADES

- The ideal attachment for landscaping, nursery, and municipal applications, the tree spade can dig, load and transplant trees with ease.
- The inside frame design with 25° cutting angle allows operation in confined areas and aids in compressing the tree ball into the basket.
- Able to produce several uniform ball sizes with one set of blades.
- Three models available to accommodate root ball diameters from 26" to 44" or tree calipers between 1" to 4.5".



TRENCHERS

- JCB offers High Flow and Standard Flow models in 30", 36" or 48" dig depths to suit various trenching applications.
- High torque hydraulic motors provide maximum digging power for excellent productivity.
- Side shift feature allows trenching next to walls or structures and single side spoil auger permits working in confined spaces.
- Low profile design for excellent visibility to the trench.



VIBRATORY ROLLERS

- Compact sand, soil, gravel or crushed stone in preparation for concrete or asphalt surfacing with JCB vibratory rollers.
- Produces up to 9370 lbs of dynamic force for excellent compaction.
- Features 15° of oscillation for compaction on uneven terrain.
- Adjustable scraper blade for smooth and uniform compaction.
- Available in either smooth drum for granular soil types and asphalt patch work or pad foot drum for wet soil or clay type applications.

NEW GENERATION SKID STEER & COMPACT TRACK LOADER DEALER FIT PRICE PAGES

NOTE: MACHINE WIDTH IS DEPENDENT ON TIRE OR TRACK SPECIFICATION. CONFIRM OVERALL MACHINE WIDTH WITH SPECIFIC TIRES OR TRACKS FOR CORRECT BUCKET SIZING.

BUCKETS - DIRT / GENERAL PURPOSE

Part #	Sales Code	Description	JCB Model Name	Multi-Func. Controls Required.	Weight (lbs)	210 / 215	260 / 270	300 / 330	210T / 215T	260T / 270T	300T	2TS-7T	3TS-8T / 3TS-8W	
333/L8800	881D346	54" Dirt/GP Bucket / 12.5 cu. ft. Capacity (Bolt-on edge optional-see page 3)	DB54	NO	300	*	*	*	*	*	*	*	*	
333/L8803	881D347	60" Dirt/GP Bucket / 12.7 cu. ft. Capacity (Bolt-on edge optional-see page 3)	DB60	NO	322	*	*	*	*	*	*	*	*	
332/X3184	881D301	66" Dirt/GP Bucket / 14.1 cu. ft. Capacity (Bolt-on edge optional-see page 3)	DB66	NO	440	*	*	*	*	*	*	*	*	
980/B0800		66" Dirt/GP Bucket / 14.1 cu. ft. Capacity w/ Bolt-on edge installed												
333/L4683	881D340	68" Dirt/GP Bucket / 14.3 cu. ft. Capacity (Bolt-on edge optional-see page 3)	DB68	NO	451	*	*	*	*	*	*	*	*	
980/B0801		68" Dirt/GP Bucket / 14.3 cu. ft. Capacity w/ Bolt-on edge installed												
332/L1798	881D302	72" Dirt/GP Bucket / 15.4 cu. ft. Capacity (Bolt-on edge optional-see page 3)	DB72	NO	473		*	*	*	*	*	*	*	
980/B0802		72" Dirt/GP Bucket / 15.4 cu. ft. Capacity w/ Bolt-on edge installed												
333/L4684	881D341	75" Dirt/GP Bucket / 16.4 cu. ft. Capacity (Bolt-on edge optional-see page 3)	DP75	NO	520		*	*	*	*	*	*	*	
332/X3180	881D303	78" Dirt/GP Bucket / 16.7 cu. ft. Capacity (Bolt-on edge optional-see page 3)	DB78	NO	543		*	*	*	*	*	*	*	
980/B0803		78" Dirt/GP Bucket / 16.7 cu. ft. Capacity w/ Bolt-on edge installed												
332/L1825	881D304	84" Dirt/GP Bucket / 18.1 cu. ft. Capacity (Bolt-on edge optional - see page 3)	DB84	NO	576			*		*	*		*	
980/B0804		84" Dirt/GP Bucket / 18.1 cu. ft. Capacity w/ Bolt-on edge installed	DB84	NO	576			*		*	*		*	

BUCKETS - LANDSCAPE

Part #	Sales Code	Description	JCB Model Name	Multi-Func. Controls Required.	Weight (lbs)	210 / 215	260 / 270	300 / 330	210T / 215T	260T / 270T	300T	2TS-7T	3TS-8T / 3TS-8W	
333/L8820	881D348	54" Landscape Bucket / 14.2 cu. ft. Capacity (Bolt-on edge optional - see page 3)	LSB54	NO	327	*	*	*	*	*	*	*	*	
333/L8821	881D349	60" Landscape Bucket / 15.8 cu. ft. Capacity (Bolt-on edge optional - see page 3)	LSB60	NO	352	*	*	*	*	*	*	*	*	
332/L1826	881D305	66" Landscape Bucket / 17.5 cu. ft. Capacity (Bolt-on edge optional - see page 3)	LSB66	NO	500	*	*	*	*	*	*	*	*	
980/B0805		66" Landscape Bucket / 17.5 cu. ft. Capacity w/ Bolt-on edge installed												
332/L1827	881D306	72" Landscape Bucket / 19.2 cu. ft. Capacity (Bolt-on edge optional - see page 3)	LSB72	NO	533		*	*	*	*	*	*	*	
980/B0806		72" Landscape Bucket / 19.2 cu. ft. Capacity w/ Bolt-on edge installed												
332/L1828	881D307	78" Landscape Bucket / 20.9 cu. ft. Capacity (Bolt-on edge optional - see page 3)	LSB78	NO	608		*	*	*	*	*	*	*	
980/B0807		78" Landscape Bucket / 20.9 cu. ft. Capacity w/ Bolt-on edge installed												
332/X3214	881D308	84" Landscape Bucket / 22.7 cu. ft. Capacity (Bolt-on edge optional - see page 3)												
980/B0808		84" Landscape Bucket / 22.7 cu. ft. Capacity w/ Bolt-on edge installed	LSB84	NO	641			*		*	*		*	

BUCKETS - HIGH CAPACITY / LIGHT MATERIAL

Part #	Sales Code	Description	JCB Model Name	Multi-Func. Controls Required.	Weight (lbs)	210 / 215	260 / 270	300 / 330	210T / 215T	260T / 270T	300T	2TS-7T	3TS-8T / 3TS-8W	
332/L1829	881U690	75" High Capacity / Light Material Bucket / 21 cu. ft. Capacity (Bolt-on edge optional - see page 3)	LMB75	NO	633	*	*	*	*	*	*	*	*	
332/L1830	881U691	84" High Capacity / Light Material Bucket / 26.8 cu. ft. Capacity (Bolt-on edge optional - see page 3)	LMB84	NO	749		*	*		*	*		*	
980/B0809		84" High Capacity / Light Material Bucket / 26.8 cu. ft. Capacity w/ Bolt-on edge installed												
332/L1831	881U692	84" Extra High Capacity / Very Light Material Bucket / 43.9 cu. ft. Capacity (Bolt-on edge optional - see page 3)	HCB84	NO	740			*		*	*		*	
980/B0810		84" Extra High Capacity / Very Light Material Bucket / 43.9 cu. ft. Capacity w/ Bolt-on edge installed												
332/L1834	881U693	96" Extra High Capacity / Very Light Material Bucket / 54.0 cu. ft. Capacity (Bolt-on edge optional - see page 3)												
980/B0811		96" Extra High Capacity / Very Light Material Bucket / 54 cu. ft. Capacity w/ Bolt-on edge installed	HCB96	NO	880			*		*	*		*	

BUCKETS - SNOW

Part #	Sales Code	Description	JCB Model Name	Multi-Func. Controls Required.	Weight (lbs)	210 / 215	260 / 270	300 / 330	210T / 215T	260T / 270T	300T	2TS-7T	3TS-8T / 3TS-8W	
332/X2435	881U536	54" Medium Duty Snow Bucket / 25.7 cu. ft. Capacity (Bolt-on edge optional - see page 3)	MSB54	NO	545	*	*	*	*	*	*	*	*	
332/X2453		66" Medium Duty Snow Bucket / 24.1 cu. ft. capacity (Bolt-on edge optional - see page 3)	MSB66	NO	620	*	*	*	*	*	*	*	*	
980/B0812		66" Medium Duty Snow Bucket / 24.1 cu. ft. capacity w/ Bolt-on edge installed												
332/X4311	881U680	84" Medium Duty Snow Bucket / 30.8 cu. ft. Capacity (Bolt-on edge optional-see page 3)	MSB84	NO	733		*	*	*	*	*	*	*	
980/B0813		84" Medium Duty Snow Bucket / 30.8 cu. ft. Capacity w/ Bolt-on edge installed												
332/X4312	881U681	96" Medium Duty Snow Bucket / 35.4 cu. ft. Capacity (Bolt-on edge optional-see page 3)	MSB96	NO	795		*	*		*	*		*	
980/B0814		96" Medium Duty Snow Bucket / 35.4 cu. ft. Capacity w/ Bolt-on edge installed												
332/X4313	881U682	96" Heavy Duty Snow Bucket / 49.4 cu. ft. Capacity (Bolt-on edge optional-see page 3)	HSB96	NO	999			*		*	*		*	
980/B0815		96" Heavy Duty Snow Bucket / 49.4 cu. ft. Capacity w/ Bolt-on edge installed												
332/X4314	881U683	108" Heavy Duty Snow Bucket / 55.9 cu. ft. Capacity (Bolt-on edge optional-see page 3)	HSB108	NO	1058			*		*	*		*	
980/B0816		108" Heavy Duty Snow Bucket / 55.9 cu. ft. Capacity w/ Bolt-on edge installed		NO	1058			*		*	*		*	

BUCKETS - 6 IN 1 MULTIPURPOSE

Part #	Sales Code	Description	JCB Model Name	Multi-Func. Controls Required.	Weight (lbs)	210 / 215	260 / 270	300 / 330	210T / 215T	260T / 270T	300T	2TS-7T	3TS-8T / 3TS-8W	
333/L9488	881D365	60" - 6 in 1 Multipurpose Bucket / 12.2 cu. ft. Capacity (Bolt-on edge optional-see page 3)	MPB60	NO	447	*	*	*	*	*	*	*	*	
332/X4315	881D309	66" - 6 in 1 Multipurpose Bucket / 15.8 cu. ft. Capacity (Bolt-on edge optional-see page 3)	MPB66	NO	630	*	*	*	*	*	*	*	*	
980/B0817		66" - 6 in 1 Multipurpose Bucket / 15.8 cu. ft. Capacity w/ Bolt-on edge installed												
332/L3338	881D310	72" - 6 in 1 Multipurpose Bucket / 17.2 cu. ft. Capacity (Bolt-on edge optional-see page 3)	MPB72	NO	665		*	*	*	*	*	*	*	
980/B0818		72" - 6 in 1 Multipurpose Bucket / 17.2 cu. ft. Capacity w/ Bolt-on edge installed												
332/L3339	881D311	78" - 6 in 1 Multipurpose Bucket / 21.7 cu. ft. Capacity (Bolt-on edge optional-see page 3)	MPB78	NO	945		*	*	*	*	*	*	*	
980/B0819		78" - 6 in 1 Multipurpose Bucket / 21.7 cu. ft. Capacity w/ Bolt-on edge installed												
332/L3340	881D311	84" - 6 in 1 Multipurpose Bucket / 23.4 cu. ft. Capacity (Bolt-on edge optional-see page 3)	MPB84											
980/B0820	881D312	84" - 6 in 1 Multipurpose Bucket / 23.4 cu. ft. Capacity w/ Bolt-on edge installed		NO	1040			*		*	*		*	

BUCKET ACCESSORIES

Part #	Sales Code	Description	JCB Model Name	Multi-Func. Controls Required.	Weight (lbs)	210 / 215	260 / 270	300 / 330	210T / 215T	260T / 270T	300T	2TS-7T	3TS-8T / 3TS-8W	
334/L3087	881H319	Bolt on Edge for 54" bucket		NO	88	*	*	*	*	*	*	*	*	
334/L3084	881H320	Bolt on Edge for 60" bucket		NO	99	*	*	*	*	*	*	*	*	
332/L5944	881H301	Bolt on Edge for 66" bucket/ Scrap grapple		NO	107	*	*	*	*	*	*	*	*	
335/A6434	881H325	Bolt on Edge for 68" bucket		NO	108	*	*	*	*	*	*	*	*	
332/L5946	881H302	Bolt on Edge for 72" bucket		NO	118		*	*	*	*	*	*	*	
334/L1864	881H316	Bolt on Edge for 75" bucket / 76" Scrap Grapple		NO	121	*	*	*	*	*	*	*	*	
332/L5947	881H303	Bolt on Edge for 78" bucket		NO	128		*	*	*	*	*	*	*	
334/L7905	881U214	Bolt on Edge for 82" Scrap Grapple		NO	132			*		*	*		*	
332/L5948	881H304	Bolt on Edge for 84" bucket		NO	137			*		*	*		*	
334/L5920	881U215	Bolt on Edge for 96" Snow Bucket		NO	154		*	*		*	*		*	
334/L5921	881U216	Bolt on Edge for 108" Snow Bucket		NO	174			*		*	*		*	
334/L5922	881U217	Bolt on Edge for 96" Extra High Capacity / Light Material Buckets		NO	154			*		*	*		*	
334/L3088	881H321	Tooth Bar for 54" bucket - Over bucket		NO	77	*	*	*	*	*	*	*	*	
334/L3086	881H322	Tooth Bar for 60" bucket - Over bucket		NO	79	*	*	*	*	*	*	*	*	
332/L3521	881H305	Tooth Bar for 66" bucket - Over bucket		NO	90	*	*	*	*	*	*	*	*	
334/L1859	881H326	Tooth Bar for 68" bucket - Over bucket		NO	90	*	*	*	*	*	*	*	*	
332/L3532	881H306	Tooth Bar for 72" bucket - Over bucket		NO	102		*	*	*	*	*	*	*	
334/L1856	881H317	Tooth Bar for 75" bucket - Over bucket		NO	106	*	*	*	*	*	*	*	*	
332/L3535	881H307	Tooth Bar for 78" bucket - Over bucket		NO	106		*	*	*	*	*	*	*	
332/L3561	881H308	Tooth Bar for 84" bucket - Over bucket		NO	118			*		*	*		*	
334/L3089	881H323	Tooth Bar for 54 bucket - Over bolt on edge		NO	97	*	*	*	*	*	*	*	*	
334/L3085	881H324	Tooth Bar for 60" bucket - Over bolt on edge		NO	99	*	*	*	*	*	*	*	*	
332/L3529	881H309	Tooth Bar for 66" bucket - Over bolt on edge		NO	112	*	*	*	*	*	*	*	*	
334/L1860	881H327	Tooth Bar for 68" bucket - Over bolt on edge		NO	112	*	*	*	*	*	*	*	*	
332/L3533	881H310	Tooth Bar for 72" bucket - Over bolt on edge		NO	127		*	*	*	*	*	*	*	
334/L1858	881H318	Tooth Bar for 75" bucket - Over bolt on edge		NO	127	*	*	*	*	*	*	*	*	
332/L3536	881H311	Tooth Bar for 78" bucket - Over bolt on edge		NO	130		*	*	*	*	*	*	*	
332/L3563	881H312	Tooth Bar for 84" bucket - Over bolt on edge		NO	141			*		*	*		*	
332/X4852	881H313	Tooth Guard		NO	21	*	*	*	*	*	*	*	*	

AUGER DRIVE UNITS

Part #	Sales Code	Description	JCB Model Name	Multi-Func. Controls Required.	Weight (lbs)	210 / 215	260 / 270	300 / 330	210T / 215T	260T / 270T	300T	2TS-7T	3TS-8T / 3TS-8W	
332/L3978	881U400	Planetary Drive Auger - Standard Flow - (includes mounting bracket & hoses)	PASF	NO	407	*	*	*	*	*	*	*	*	
332/L3979	881U401	Planetary Drive Auger - High Flow - (includes mounting bracket & hoses)	PAHF	NO	536		*	*	*	*	*	*	*	

AUGER BITS - STANDARD DUTY

Part #	Sales Code	Description	JCB Model Name	Multi-Func. Controls Required.	Weight (lbs)	210 / 215	260 / 270	300 / 330	210T / 215T	260T / 270T	300T	2TS-7T	3TS-8T / 3TS-8W	
980/A2019	881U450	6" X 4' Standard Auger 2" Hex		NO	42	*	*	*	*	*	*	*	*	
980/A2021	881U451	9" X 4' Standard Auger 2" Hex		NO	86	*	*	*	*	*	*	*	*	
980/A2023	881U452	12" X 4' Standard Auger 2" Hex		NO	120	*	*	*	*	*	*	*	*	
980/A2025	881U453	15" X 4' Standard Auger 2" Hex		NO	131	*	*	*	*	*	*	*	*	
980/A2027	881U454	18" X 4' Standard Auger 2" Hex		NO	160	*	*	*	*	*	*	*	*	
980/A2028	881U455	24" X 4' Standard Auger 2" Hex		NO	278	*	*	*	*	*	*	*	*	
980/A2029	881U456	30" X 4' Standard Auger 2" Hex		NO	325	*	*	*	*	*	*	*	*	
980/A2030	881U457	36" X 4' Standard Auger 2" Hex		NO	443	*	*	*	*	*	*	*	*	

AUGER BITS - HEAVY DUTY

Part #	Sales Code	Description	JCB Model Name	Multi-Func. Controls Required.	Weight (lbs)	210 / 215	260 / 270	300 / 330	210T / 215T	260T / 270T	300T	2TS-7T	3TS-8T / 3TS-8W	
980/A3001	881U458	6" X 4' Heavy Duty Auger 2" Hex		NO	45	*	*	*	*	*	*	*	*	
980/A2031	881U459	9" X 4' Heavy Duty Auger 2" Hex		NO	98	*	*	*	*	*	*	*	*	
980/A2032	881U460	12" X 4' Heavy Duty Auger 2" Hex		NO	113	*	*	*	*	*	*	*	*	
980/A2034	881U461	15" X 4' Heavy Duty Auger 2" Hex		NO	167	*	*	*	*	*	*	*	*	
980/A2035	881U462	18" X 4' Heavy Duty Auger 2" Hex		NO	163	*	*	*	*	*	*	*	*	
980/A2037	881U463	24" X 4' Heavy Duty Auger 2" Hex		NO	272	*	*	*	*	*	*	*	*	
980/A2038	881U464	30" X 4' Heavy Duty Auger 2" Hex		NO	312	*	*	*	*	*	*	*	*	
980/A2039	881U465	36" X 4' Heavy Duty Auger 2" Hex		NO	430	*	*	*	*	*	*	*	*	

AUGER BITS - TREE & SCHRUB

Part #	Sales Code	Description	JCB Model Name	Multi-Func. Controls Required.	Weight (lbs)	210 / 215	260 / 270	300 / 330	210T / 215T	260T / 270T	300T	2TS-7T	3TS-8T / 3TS-8W	
980/L7251	881U466	18" X 4' Tree & Shrub Planting Auger 2" Hex		NO	144	*	*	*	*	*	*	*	*	
980/L7257	881U467	24" X 4' Tree & Shrub Planting Auger 2" Hex		NO	198	*	*	*	*	*	*	*	*	
980/L7267	881U468	30" X 4' Tree & Shrub Planting Auger 2" Hex		NO	264	*	*	*	*	*	*	*	*	
980/L7270	881U469	36" X 4' Tree & Shrub Planting Auger 2" Hex		NO	349	*	*	*	*	*	*	*	*	

AUGER EXTENSIONS

Part #	Sales Code	Description	JCB Model Name	Multi-Func. Controls Required.	Weight (lbs)	210 / 215	260 / 270	300 / 330	210T / 215T	260T / 270T	300T	2TS-7T	3TS-8T / 3TS-8W	
980/L7271	881U470	Hex. Drive Extension - 12"		NO	20	*	*	*	*	*	*	*	*	
980/L7272	881U471	Hex. Drive Extension - 18"		NO	26	*	*	*	*	*	*	*	*	
980/L7273	881U472	Hex. Drive Extension - 24"		NO	32	*	*	*	*	*	*	*	*	

BALE SPEARS

Part #	Sales Code	Description	JCB Model Name	Multi-Func. Controls Required.	Weight (lbs)	210 / 215	260 / 270	300 / 330	210T / 215T	260T / 270T	300T	2TS-7T	3TS-8T / 3TS-8W	
333/L5627	881U532	Bale Spear	BSP	NO	180	*	*	*	*	*	*	*	*	

BREAKERS / HYDRAULIC HAMMERS

Part #	Sales Code	Description	JCB Model Name	Multi-Func. Controls Required.	Weight (lbs)	210 / 215	260 / 270	300 / 330	210T / 215T	260T / 270T	300T	2TS-7T	3TS-8T / 3TS-8W	
980/B0255		HM026T (includes Chisel & Moil) - *980/B0332 Installation Kit required*	HM026T	NO	575	*			*			*		
980/B0330		HM033T (includes Chisel & Moil) - *980/B0332 Installation Kit required*	HM033T	NO	725		*	*		*	*		*	
980/B0332		Installation Kit for HM026T/HM033T - Inc. mounting bracket and hoses		NO	200	*	*	*	*	*	*	*	*	
980/A7456	881U354	HM266Q (includes Chisel & Moil) - *980/28400 Mounting Bracket required*	HM266Q	NO	228	*	*	*	*	*	*	*	*	
980/28400	881U351	Mounting Plate - Required for HM266Q Hammer		NO	185	*	*	*	*	*	*	*	*	
980/A3483	881U352	HM386Q (includes Chisel & Moil) - *980/68700 Mounting Bracket required*	HM386Q	NO	725		*	*		*	*		*	
980/68700	881U353	Mounting Plate - Required for HM386Q Hammer		NO	185		*	*		*	*		*	

** Front Impact Protection Screen Option Recommended with use of Hydraulic Breakers - Machine Sales Code 881G008 or 881G009**

BROOMS - ANGLE

Part #	Sales Code	Description	JCB Model Name	Multi-Func. Controls Required.	Weight (lbs)	210 / 215	260 / 270	300 / 330	210T / 215T	260T / 270T	300T	2TS-7T	3TS-8T / 3TS-8W	
332/X2465	881U303	Angle broom - 60" with manual angle adjustment link	BR60	NO	805	*	*	*	*	*	*	*	*	
332/L3992	881U300	Angle broom - 72" with manual angle adjustment link	BR72	NO	852	*	*	*	*	*	*	*	*	
332/L4027	881U301	Angle broom - 84" with manual angle adjustment link	BR84	NO	915		*	*		*	*		*	
332/ L3983	881U302	Hydraulic angle kit for Angle Broom (Requires Optional 7 Way Joysticks)		YES	40	*	*	*	*	*	*	*	*	

BRUSH CUTTERS

Part #	Sales Code	Description	JCB Model Name	Multi-Func. Controls Required.	Weight (lbs)	210 / 215	260 / 270	300 / 330	210T / 215T	260T / 270T	300T	2TS-7T	3TS-8T / 3TS-8W	
333/X5390		60" Brush Cutter - Standard Flow	BC60	NO	1120		*	*	*	*	*	*	*	
333/X5231	881U523	72" Brush Cutter - Standard Flow	BC72	NO	1280		*	*	*	*	*	*	*	
333/X4409	881U524	72" Brush Cutter - HIGH FLOW	BC72HF	NO	1320		*	*		*	*		*	
333/X4383	881U525	78" Brush Cutter - HIGH FLOW	BC78HF	NO	1405			*		*	*		*	

Brush Cutters Require Fitment of Height Limiter Device

COLD PLANERS

Part #	Sales Code	Description	JCB Model Name	Multi-Func. Controls Required.	Weight (lbs)	210 / 215	260 / 270	300 / 330	210T / 215T	260T / 270T	300T	2TS-7T	3TS-8T / 3TS-8W	
332/X4382	881U605	12" Cold Planer - Hyd. Side Shift / Tilt / Depth - Standard Flow	CP12	YES	1500	*	*	*	*	*	*	*	*	
332/X4299	881U606	16" Cold Planer - Hyd. Side Shift / Tilt / Depth - HIGH FLOW	CP16HF	YES	2200	*	*	*	*	*	*	*	*	
332/X4300	881U607	18" Cold Planer - Hyd. Side Shift / Tilt / Depth - HIGH FLOW	CP18HF	YES	2225	*	*	*	*	*	*	*	*	
332/L7272	881U608	24" Cold Planer - Hyd. Side Shift / Tilt / Depth - HIGH FLOW	CP24HF	YES	2425	*	*	*	*	*	*	*	*	
332/X4301	881U609	30" Cold Planer - Hyd. Side Shift / Tilt / Depth - HIGH FLOW	CP30HF	YES	2625		*	*		*	*		*	
332/X4302	881U610	40" Cold Planer - Hyd. Side Shift / Tilt / Depth - HIGH FLOW	CP40HF	YES	3125		*	*		*	*		*	

DOZER BLADES

Part #	Sales Code	Description	JCB Model Name	Multi-Func. Controls Required.	Weight (lbs)	210 / 215	260 / 270	300 / 330	210T / 215T	260T / 270T	300T	2TS-7T	3TS-8T / 3TS-8W	
332/X4285	881U518	84" Dozer Blade - 6 Way Hydraulic	HDB84	YES	1300			*		*	*		*	
332/X4287	881U519	96" Dozer Blade - 6 Way Hydraulic	HDB96	YES	1400			*		*	*		*	
332/X4391		Adapter Harness for In-Cab Controls (allows for use with 3-way controls)		YES				*		*	*		*	

FORESTRY CUTTING HEAD

Part #	Sales Code	Description	JCB Model Name	Multi-Func. Controls Required.	Weight (lbs)	210 / 215	260 / 270	300 / 330	210T / 215T	260T / 270T	300T	2TS-7T	3TS-8T / 3TS-8W	
334/L8351	881U516	60" Forestry Cutting Head - HIGH FLOW	FC60HF	YES	2640		*	*		*	*		*	

Forestry Cutting Head Requires Fitment of Machine Forestry Protection Package - Sales Code 881G016

FORKS - PALLET

Part #	Sales Code	Description	JCB Model Name	Multi-Func. Controls Required.	Weight (lbs)	210 / 215	260 / 270	300 / 330	210T / 215T	260T / 270T	300T	2TS-7T	3TS-8T / 3TS-8W	
332/L3341	881D313	Pallet Fork Frame, Load backrest and 42" Tines (Heavy Duty 5,500lb lift capacity)	PF42	NO	450	*	*	*	*	*	*	*	*	
332/L3342	881D313	Pallet Fork Frame, Load backrest and 48" Tines (Heavy Duty 5,500lb lift capacity)	PF42	NO	450	*	*	*	*	*	*	*	*	
400/Z3682		50" Hyd. Fork Positioning Carriage w/ 48" forks (SSL hyd. couplings not included)		NO	1,021	*	*	*	*	*	*	*	*	

FORKS - MANURE WITH TOP GRAPPLE

Part #	Sales Code	Description	JCB Model Name	Multi-Func. Controls Required.	Weight (lbs)	210 / 215	260 / 270	300 / 330	210T / 215T	260T / 270T	300T	2TS-7T	3TS-8T / 3TS-8W	
333/L6079	881U530	60" Manure Forks with Top Grapple	MFG60	NO	418	*	*	*	*	*	*	*	*	
333/L6106	881U531	66" Manure Forks with Top Grapple	MFG66	NO	459	*	*	*	*	*	*	*	*	
332/L3869	881U550	72" Manure Forks with Top Grapple	MFG72	NO	655		*	*	*	*	*	*	*	
332/L3879	881U551	84" Manure Forks with Top Grapple	MFG84	NO	805		*	*		*	*		*	

ROCK SAWS

Part #	Sales Code	Description	JCB Model Name	Multi-Func. Controls Required.	Weight (lbs)	210 / 215	260 / 270	300 / 330	210T / 215T	260T / 270T	300T	2TS-7T	3TS-8T / 3TS-8W	
332/L7244	881U611	Rock Saw - 18" Depth - HIGH FLOW	RS18HF	YES	1995		*	*		*	*		*	
332/L7269	881U612	Rock Saw - 24" Depth - HIGH FLOW	RS24HF	YES	2385			*		*	*		*	

SNOW BLADES

Part #	Sales Code	Description	JCB Model Name	Multi-Func. Controls Required.	Weight (lbs)	210 / 215	260 / 270	300 / 330	210T / 215T	260T / 270T	300T	2TS-7T	3TS-8T / 3TS-8W	
333/L8499	881U533	60" Snow Blade - Manual Angle	SBM60	NO	430	*	*	*	*	*	*	*	*	
332/X4347	881U650	72" Snow Blade - Manual Angle	SBM72	NO	595	*	*	*	*	*	*	*	*	
332/X4348	881U651	84" Snow Blade - Manual Angle	SBM84	NO	635		*	*		*	*		*	
332/X4349	881U652	96" Snow Blade - Manual Angle	SBM96	NO	650		*	*		*	*		*	
333/L8498	881U534	60" Snow Blade - Hydraulic Angle	SBH60	NO	470	*	*	*	*	*	*	*	*	
332/X4350	881U653	72" Snow Blade - Hydraulic Angle	SBH72	NO	595	*	*	*	*	*	*	*	*	
332/X4351	881U654	84" Snow Blade - Hydraulic Angle	SBH84	NO	635		*	*		*	*		*	
332/X4352	881U655	96" Snow Blade - Hydraulic Angle	SBH96	NO	650		*	*		*	*		*	
332/L3915	881U656	96" Heavy Duty Snow Blade - Hydraulic Angle	HSB96	NO	780			*		*	*		*	
332/L3927	881U657	108" Heavy Duty Snow Blade - Hydraulic Angle	HSB108	NO	850			*		*	*		*	
332/L3932	881U658	120" Heavy Duty Snow Blade - Hydraulic Angle	HSB120	NO	925			*		*	*		*	

SNOW BLOWERS

Part #	Sales Code	Description	JCB Model Name	Multi-Func. Controls Required.	Weight (lbs)	210 / 215	260 / 270	300 / 330	210T / 215T	260T / 270T	300T	2TS-7T	3TS-8T / 3TS-8W	
333/L6154	881U535	60" Snow Blower - Standard Flow	SBL60	YES	820	*	*	*	*	*	*	*	*	
332/X4383	881U663	72" Snow Blower - Standard Flow	SBL72	YES	685	*	*	*	*	*	*	*	*	
332/X4384	881U664	78" Snow Blower - Standard Flow	SBL78	YES	703		*	*	*	*	*	*	*	
332/X4385	881U665	84" Snow Blower - Standard Flow	SBL84	YES	720		*	*		*	*		*	
334/L2463	881U659	72" Snow Blower - HIGH FLOW SMALL PLATFORM ONLY	SBL72SPHF	YES	1160	*	*	*	*	*	*	*	*	
332/X4399	881U660	72" Snow Blower - HIGH FLOW	SBL72HF	YES	1160		*	*		*	*		*	
334/L2491	881U667	78" Snow Blower - HIGH FLOW SMALL PLATFORM ONLY	SBL78SPHF	YES	1200				*			*		
332/X4400	881U661	78" Snow Blower - HIGH FLOW	SBL78HF	YES	1200		*	*		*	*		*	
332/X4401	881U662	84" Snow Blower - HIGH FLOW	SBL84HF	YES	1240		*	*		*	*		*	

SNOW PUSHERS

Part #	Sales Code	Description	JCB Model Name	Multi-Func. Controls Required.	Weight (lbs)	210 / 215	260 / 270	300 / 330	210T / 215T	260T / 270T	300T	2TS-7T	3TS-8T / 3TS-8W	
333/X6486	881U670	72" Snow Push	SBM72	NO	525	*	*	*	*	*	*	*	*	
333/X6487	881U671	84" Snow Push	SBM84	NO	570		*	*		*	*		*	
333/X6488	881U672	96" Snow Push	SBM96	NO	615			*		*	*		*	

STUMP GRINDERS

Part #	Sales Code	Description	JCB Model Name	Multi-Func. Controls Required.	Weight (lbs)	210 / 215	260 / 270	300 / 330	210T / 215T	260T / 270T	300T	2TS-7T	3TS-8T / 3TS-8W	
332/X4294	881U600	Stump Grinder - 26" Wheel Diameter / Standard Flow	SGS26	YES	720	*	*	*	*	*	*	*	*	
332/X4295	881U601	Stump Grinder - 30" Wheel Diameter / HIGH FLOW	SG30HF	YES	795	*	*	*	*	*	*	*	*	

** Front Impact Protection Screen Option Recommended with use of Stump Grinders - Machine Sales Code 881G008 or 881G009**

SWEeper COLLECTORS

Part #	Sales Code	Description	JCB Model Name	Multi-Func. Controls Required.	Weight (lbs)	210 / 215	260 / 270	300 / 330	210T / 215T	260T / 270T	300T	2TS-7T	3TS-8T / 3TS-8W	
401/G1172	881U247	60" Pick-Up Sweeper	SC60	NO	840	*	*	*	*	*	*	*	*	
401/G1179	881U248	72" Pick-Up Sweeper	SC72	NO	956		*	*	*	*	*	*	*	
401/G1181	881U249	84" Pick-Up Sweeper	SC84	NO	1072		*	*		*	*		*	
336/C8819		Gutter Brush Kit		NO	100	*	*	*	*	*	*	*	*	
333/X2103		Sprinkler Kits with 25 gallon tank		NO	47	*	*	*	*	*	*	*	*	

TILLERS

Part #	Sales Code	Description	JCB Model Name	Multi-Func. Controls Required.	Weight (lbs)	210 / 215	260 / 270	300 / 330	210T / 215T	260T / 270T	300T	2TS-7T	3TS-8T / 3TS-8W	
333/L8191	881U526	52" Tiller - 6 inch tines - Standard Flow	TLR52	NO	810	*	*	*	*	*	*	*	*	
332/X4380	881U510	66" Tiller - 6 inch tines - HIGH FLOW	TLR66HF	NO	880		*	*		*	*		*	
332/X4381	881U511	78" Tiller - 6 inch tines - HIGH FLOW	TLR78HF	NO	1100		*	*		*	*		*	

TREE SPADES

Part #	Sales Code	Description	JCB Model Name	Multi-Func. Controls Required.	Weight (lbs)	210 / 215	260 / 270	300 / 330	210T / 215T	260T / 270T	300T	2TS-7T	3TS-8T / 3TS-8W	
332/X4296	881U602	Tree Spade with Blades / 25 degree cutting angle / 18" - 26" ball diameter	TS26	NO	1100				*	*	*	*	*	
332/X4297	881U603	Tree Spade with Blades / 25 degree cutting angle / 24" - 36" ball diameter	TS36	NO	1500					*	*		*	
332/X4298	881U604	Tree Spade with Blades / 25 degree cutting angle / 32" - 44" ball diameter	TS44	NO	1825					*	*		*	

TRENCHERS

Part #	Sales Code	Description	JCB Model Name	Multi-Func. Controls Required.	Weight (lbs)	210 / 215	260 / 270	300 / 330	210T / 215T	260T/270T	300T	2TS-7T	3TS-8T / 3TS-8W	
333/L8251	881U529	30" Trencher with 6" wide chain, crumber and hoses - Standard Flow	TR30	NO	1040	*	*	*	*	*	*	*	*	
332/L7251	881U520	36" Trencher with 6" wide chain, crumber and hoses - Standard Flow	TR36	NO	1040	*	*	*	*	*	*	*	*	
332/X4289	881U521	48" Trencher with 6" wide chain, crumber and hoses - Standard Flow	TR48	NO	1120	*	*	*	*	*	*	*	*	
332/X4290	881U522	48" Trencher with 6" wide chain, crumber and hoses - HIGH FLOW	TR48HF	NO	1120		*	*		*	*		*	

VIBRATORY ROLLERS

Part #	Sales Code	Description	JCB Model Name	Multi-Func. Controls Required.	Weight (lbs)	210 / 215	260 / 270	300 / 330	210T / 215T	260T/ 270T	300T	2TS-7T	3TS-8T / 3TS-8W	
332/X4709	881U527	66" Vibratory Roller - Smooth Drum	VR66S	NO	2150		*	*	*	*	*	*	*	
332/X4281	881U512	73" Vibratory Roller - Smooth Drum	VR73S	NO	2300		*	*	*	*	*	*	*	
332/X4282	881U513	84" Vibratory Roller - Smooth Drum	VR84S	NO	2530			*		*	*		*	
332/X4710	881U528	66" Vibratory Roller - Padded Drum	VR66P	NO	2085		*	*	*	*	*	*	*	
332/X4283	881U514	73" Vibratory Roller - Padded Drum	VR73P	NO	2230		*	*	*	*	*	*	*	
332/X4284	881U515	84" Vibratory Roller - Padded Drum	VR84P	NO	2455			*		*	*		*	

ELECTRICAL & OPERATOR COMPARTMENT OPTIONS - TIER IV ENGINE

Part #	Sales Code	Description	JCB Model Name	Multi-Func. Controls Required.	Weight (lbs)	210 / 215	260 / 270	300 / 330	210T / 215T	260T /270T	300T	2TS-7T	3TS-8T / 3TS-8W	
335/A5620		Creep Speed	N/A			*	*	*	*	*	*	*	*	
335/A5622		Dual Pattern Control	N/A			*	*	*	*	*	*	*	*	
335/A5624		JCB Immobilizer (All machine configurations)	N/A			*	*	*	*	*	*	*	*	

DEALER FIT KITS

Part #	Sales Code	Description	JCB Model Name	Multi-Func. Controls Required.	Serial Number	210 / 215	260 / 270	300 / 330	210T / 215T	260T/ 270T	300T	2TS-7T	3TS-8T / 3TS-8W	
985/X5575	N/A	Front Screen Guard (Cab frame must have design with bolt holes available)	N/A	NO	2427801-2428800	*	*	*	*	*	*	*	*	
985/X5579	N/A	Level 2 FOPS Guard (Cab)	N/A	NO	2427801-2428800		*	*		*	*		*	
985/X5577	N/A	RH FOPS Guard (Requires 985/X5579)- June 2017 builds and prior only	N/A	NO	2427801-2428800		*	*		*	*		*	
985/X5653	N/A	Lexan Front Screen (Cab frame must have design with bolt holes available)	N/A	NO	2427801-2428800		*	*		*	*		*	

985/A9813	N/A	Multifunction Joystick	N/A	NO	2427801-2428800		*	*		*	*	\$5,321	
985/A5961	N/A	Roadlight w/Brake Lights (Non-Hi Viz Only)	N/A	NO	2201002-2206002	*			*			\$1,441	
985/A1463	N/A	Roadlight w/Brake Lights (Non-Hi Viz Only)	N/A	NO	2727801-2428800		*	*		*	*	\$1,835	
985/A1554	N/A	Smooth Ride System - Additional parts required; see fitting instructions	N/A	NO	2727801-2428800		*	*		*	*	\$1,632	
985/A4654	N/A	Smooth Ride System - Additional parts required; see fitting instructions	N/A	NO	2201002-2206002	*			*			\$1,554	
985/X9922		Reversing Fan - Hose 333/X5975 or 333/X5584 also req. - See Fitting instructions)	N/A	NO	2727801-2428800		*	*		*	*	\$1,200	
328/00241	-	SSL Quick Hitch Blank Plate	N/A	NO	2427801-2428800	*	*	*	*	*	*	*	*



AUGERS

SPECIFICATIONS

	PASF	PAHF	
Hyd Flow Range			
Min - gpm (lpm)	10 (38)	28 (106)	
Max - gpm (lpm)	25 (94)	40 (151)	
Max Continuous Operating Pressure - psi (bar)	3340 (230)	3340 (230)	
Max Auger Diameter - in (mm)	30 (762)	48 (1219)	
Output Shaft	2" Hex	2" Hex	
Weight - lb (kg)	407 (185)	536 (243)	
Output Speed:	gpm (lpm)	rpm	rpm
	10 (38)	38	-
	16 (60)	60	-
	25 (94)	94	-
	28 (106)	-	59
	34 (129)	-	72
	40 (151)	-	85
Output Torque:	psi (bar)	lbs / ft	lbs / ft
	2000 (138)	1600	-
	2500 (172)	2000	3620
	3000 (207)	2377	4345
	3500 (241)	-	5096

FEATURES & BENEFITS

- Sealed planetary gear reduction with heavy-duty gear design provides long life and minimal maintenance with low service costs.
- Drive units are completely sealed with all moving components operating in oil for constant lubrication.
- Reverse rotation for quick back out and aids in shedding material from the auger bit.
- Hydraulic relief valve protects the unit from damage if auger comes in contact with a large immovable object.
- Available in both Low Flow and High Flow models with a wide range of auger bits for various applications.



Available Auger Bits include:

STANDARD DUTY BITS: (For light to moderate ground conditions)

Width	6"	9"	12"	15"	18"	24"	30"	36"
# of Teeth	2	3	4	5	6	8	9	11

HEAVY DUTY BITS: (For difficult ground conditions, compacted soil, heavy clay, asphalt, and frozen ground)

Width	6"	9"	12"	15"	18"	24"	30"	36"
# of Teeth	2	4	4	6	6	8	10	12

TREE & SHRUB BITS: (For tree and shrub planting)

Width	18"	24"	30"	36"
Pilot Diameter	9"	12"	15"	18"
# of Teeth	7	10	11	13

BALE SPEARS

SPECIFICATIONS

	BSP
Lift Capacity - lb (kg)	2000 (907)
Length - in (mm)	45 (1143)
Height - in (mm)	20 (508)
Weight - lb (kg)	180 (81)

FEATURES & BENEFITS

- Heavy-duty frame with replaceable tines.
- Designed to keep bales close to machine for safe handling.
- Available in one size to be used across the entire range of skid steer machines.



BREAKERS

SPECIFICATIONS

	HM265Q	HM386Q
Operating Weight - lb (kg)	440 (200)	795 (361)
Impact Energy - ft / lb (J)	381 (516)	611 (828)
Blow Rate / Min - Max - bpm	480 - 1200	720 - 1380
Carrier Weight / Min - Max - tons	2.8 - 6.0	4.5 - 9.0
Oil Flow Required		
Min - gpm (lpm)	8 (30)	16 (60)
Max - gpm (lpm)	17 (64)	26 (98)
Sound Power Level (dB)	128	121

FEATURES & BENEFITS

- JCB breakers feature outstanding impact energy and compact construction for class-leading power-to-weight performance.
- Sealed for life accumulator means the accumulator only needs recharging upon a full rebuild service; reducing maintenance costs.
- Accumulator diaphragm support protects against wear, resulting in extended seal life.
- Internal helicoil bolt system is much more robust and durable than traditional tie bolt and can withstand much greater flexing without failing.
- Solid body design offers less sealing and joint lines than the traditional design and is therefore less prone to hydraulic leaks.
- Stainless steel piston eliminates corrosion and offers greater protection to the seals.
- Simple tool lock enables quick tool changeover.
- Oval double tool retainers reduce tool rotation extending tool and bush life.



BROOMS, ANGLE

SPECIFICATIONS

	BR60	BR72	BR84
Overall Width			
Straight - in (mm)	74.8 (1900)	86.8 (2204)	98.8 (2509)
Full 30° Angle - in (mm)	75.2 (1910)	85.6 (2174)	96 (2438)
Sweeping Width			
Straight - in (mm)	59 (1498)	71 (1803)	83 (2108)
Full 30° Angle - in (mm)	62 (1575)	62 (1575)	72 (1828)
Overall Length			
Straight - in (mm)	68.5 (1740)	71 (1803)	71 (1803)
Full 30° Angle - in (mm)	77 (1956)	79.5 (2019)	82.5 (2095)
Weight - lb (kg)	805 (365)	856 (388)	907 (411)
Hyd Flow Range			
Min - gpm (lpm)	12 (45.5)	14 (53)	14 (53)
Max - gpm (lpm)	25 (94)	25 (94)	25 (94)
Max Operating Pressure - psi (bar)	3000 (206)	3340 (230)	3340 (230)

FEATURES & BENEFITS

- 32" diameter poly wire brush provides long-term durability.
- Fold away storage stands protects bristles from flattening when not in use.
- Bristle replacement is simplified as the drive motor detaches from the core without having to disconnect hydraulic lines.
- Reinforced hood design provides maximum strength at the end of the hood where high stress may occur.
- Broom angles 30° left or right (hydraulic angle option available).
- 60", 72" and 84" models are available.



Hydraulic angle option requires JCB multi-function controls

BROOMS, SWEEPER COLLECTOR

SPECIFICATIONS

	SC60	SC72	SC84
Total Width - in (mm)			
	70.8 (1798)	82.8 (2103)	94.8 (2408)
Working Width - in (mm)			
	60 (1524)	72 (1829)	84 (2133)
Height - in (mm)			
	40.4 (1026)	40.4 (1026)	40.4 (1026)
Length - in (mm)			
	61 (1549)	61 (1549)	61 (1549)
Weight - lb (kg)			
	840 (381)	956 (434)	1072 (486)
Center of Gravity - in (mm)			
	26.4 (671)	26.4 (671)	26.4 (671)
Flow Requirement - gpm (lpm)			
	15-25 (57-94)	15-25 (57-94)	15-25 (57-94)
Brush Diameter - in (mm)			
	26 (660)	26 (660)	26 (660)
Max Pressure - PSI (bar)			
	35000 (2500)	35000 (2500)	35000 (2500)
Brush Material			
	Poly	Poly	Poly

FEATURES & BENEFITS

- 50 / 50 poly wire brush segments for long-term durability.
- Heavy-duty one piece canopy for superior structural strength.
- Floating mounting frame allows sweeper to follow contour of the ground.
- Operate in forward or reverse direction increasing productivity.



BUCKETS

DIRT / GP



Shorter bucket floor provides maximum breakout forces with great visibility to the cutting edge

LANDSCAPE



Low back and longer bucket floor provide excellent visibility to cutting edge, while maintaining high breakout forces

MULTIPURPOSE



6-in-1 multipurpose bucket lets you dig, load, spread, grade, grab and doze - all with one tool

LIGHT MATERIAL



High capacity buckets for transporting light weight materials

SNOW BUCKET



High volume buckets for snow removal with cut out back plate for good visibility to bucket edge

Bucket	Width in (mm)	Length in (mm)	Height in (mm)	Weight lb (kg)	Heaped Capacity cu ft (m ³)
DIRT / GENERAL PURPOSE					
DB54	54 (1371)	31.4 (797)	20.3 (515)	300 (136)	12.5 (0.35)
DB60	60 (1524)	31.4 (797)	20.3 (515)	322 (150)	12.7 (0.36)
DB66	66 (1676)	32.8 (833)	20.5 (521)	441 (200)	13.9 (0.39)
DB72	72 (1829)	32.8 (833)	20.5 (521)	471 (213)	15.2 (0.43)
DB78	78 (1981)	32.8 (833)	20.5 (521)	540 (245)	16.5 (0.47)
DB84	84 (2133)	32.8 (833)	20.5 (521)	573 (260)	17.8 (0.5)
LANDSCAPE					
LSB54	54 (1371)	37.4 (950)	20.3 (515)	327 (148)	14.2 (0.40)
LSB60	60 (1524)	37.4 (950)	20.3 (515)	352 (159)	15.8 (0.44)
LSB66	66 (1676)	38.8 (986)	20.5 (521)	479 (217)	17.2 (0.48)
LSB72	72 (1829)	38.8 (986)	20.5 (521)	511 (232)	18.9 (0.54)
LSB78	78 (1981)	38.8 (986)	20.5 (521)	582 (264)	17.2 (0.49)
LSB84	84 (2133)	38.8 (986)	20.5 (521)	615 (276)	22.3 (0.63)
MULTIPURPOSE					
MPB60	60 (1524)	34.2 (869)	27.1 (688)	447 (202)	12.2 (.34)
MPB66	66 (1676)	34.4 (874)	27.3 (693)	571 (259)	15.7 (0.44)
MPB72	72 (1829)	37.5 (953)	27.6 (701)	774 (351)	20 (0.57)
MPB78	78 (1981)	38 (965)	27.9 (709)	841 (381)	21.7 (0.64)
MPB84	84 (2133)	38 (965)	27.9 (709)	884 (401)	23.4 (0.66)
LIGHT MATERIAL					
LMB75	75 (1905)	36.4 (925)	24.7 (627)	633 (287)	21 (0.59)
LMB84	84 (2133)	38 (965)	25 (635)	730 (331)	26.4 (0.75)
HCB84	84 (2133)	41 (1041)	35.6 (904)	740 (336)	43.7 (1.24)
HCB96	96 (2438)	42.8 (1087)	36.3 (922)	880 (399)	55.1 (1.56)
SNOW BUCKET					
MSB54	54 (1371)	45.2 (1148)	31.1 (790)	545 (247)	25.2 (.71)
MSB66	60 (1524)	45.2 (1148)	31.1 (790)	620 (281)	28.4 (.80)
MSB84	84 (2133)	45.2 (1148)	31.1 (790)	740 (335)	39.7 (1.12)
MSB96	96 (2438)	45.2 (1148)	31.1 (790)	810 (367)	45.9 (1.30)
HSB96	96 (2438)	50.7 (1288)	38.8 (985)	995 (451)	63.7 (1.80)
HSB108	108 (2743)	50.7 (1288)	38.8 (985)	1055 (478)	72.1 (2.04)

FORESTRY CUTTING HEADS

SPECIFICATIONS

	FC60HF
Overall Width - in (mm)	73 (1854)
Overall Height - in (mm)	60.4 (1534)
Overall Length - in (mm)	49.5 (1257)
Cutting Width - in (mm)	60 (1524)
Number of Cutting Hammers	44
Hyd Flow Range	
Min - gpm (lpm)	30 (114)
Max - gpm (lpm)	45 (170)
Max Operating Pressure - psi (bar)	4000 (276)
Weight - lb (kg)	2640 (1197)



FEATURES & BENEFITS

- Extreme-duty design utilizes a high output variable displacement piston motor with self aligning belt drive providing maximum productivity.
- Hydraulically adjustable deflector door allows control of discharge and size of processed material.
- Heavy-duty adjustable push bar aids in toppling trees and offers additional protection to the carrier.
- In-line hydraulic oil cooler reduces heat in the hydraulic system for efficient operation.
- Easily viewable gauge allows operator to monitor hydraulic operating pressure.
- Designed to operate at 2000 rpm with a balanced 3/4" drum wall and 2.4" alloy steel shaft.
- Rotor bearings are well protected by mechanical seals.
- Available in 60" cutting width.

Requires JCB multi-function controls
Forestry protection guards required

FORKS, PALLET

SPECIFICATIONS

	PF42	PF48
Overall Height - in (mm)	38.75 (984)	38.75 (984)
Overall Width - in (mm)	45.75 (1194)	45.75 (1194)
Overall Length - in (mm)	51.7 (1313)	57.7 (1466)
Adjustable Tine Spacing		
Max - in (mm)	45 (1143)	45 (1143)
Min - in (mm)	9 (229)	9 (229)
Pallet Fork Rating (pair of tines) - lb (kg)	6000 (2722)	6000 (2722)
Overall Weight	455 (206)	480(218)

FEATURES & BENEFITS

- Heavy-duty fork frame and tines rated at 6000 lb capacity.
- Heavy gage loadguard offers superior strength while the flat surface provides protection against damaging the load.
- Loadguard design allows excellent see through visibility to the end of the forks.
- 42" or 48" heavy-duty fork tine options.



FORKS, MANURE

SPECIFICATIONS

	MFG60	MFG66	MFG72	MFG84
Overall Width - in (mm)	60 (1524)	66 (1676)	72 (1829)	84 (2134)
Overall Height - in (mm)	20 (508)	20(508)	25 (635)	25 (635)
Overall Depth - in (mm)	29 (736)	29 (736)	30 (762)	30 (762)
Grapple Opening - in (mm)	37 (940)	37 (940)	37 (940)	37 (940)
Weight - lb (kg)	418 (189)	459 (208)	475 (215)	525 (238)

FEATURES & BENEFITS

- The manure fork with grapple is ideal for handling hay and packed material as well as cleaning up brush and limbs.
- Top grapple clamps hold load in place, reducing spillage while transporting material.
- Designed to provide great visibility to end of fork tines.
- Available in 72" and 84" versions.



GRAPPLES, BRUSH

SPECIFICATIONS

	HBG60	HBG66	HBG72	HBG78	HBG84
Overall Width - in (mm)	60 (1524)	66 (1676)	73 (1854)	79 (2006)	85 (2159)
Grapple Open - in (mm)	40 (1016)	40 (1016)	40 (1016)	40 (1016)	40 (1016)
Grapple Closed - in (mm)	16.5 (419)	16.5 (419)	16.5 (419)	16.5 (419)	16.5 (419)
Overall Depth - in (mm)	39 (991)	39 (991)	39 (991)	39 (991)	39 (991)
Weight - lb (kg)	715 (324)	739 (335)	925 (420)	999 (453)	1054 (478)
Number of Tines	12	12	14	14	16

FEATURES & BENEFITS

- Dual, independent grapples hold irregularly shaped material securely in place.
- 40" grapple opening allows for large payloads.
- 6" tine spacing allows dirt to sift through.
- 100,000 psi yield tine strength to handle the most demanding applications.
- Standard cylinder guards protect all cylinder components from potential damage.
- 1-1/4" hardened cylinder pins and 1/2" end plates for long life durability.
- 1-1/4" x 24" grapple pins greatly reduce torsional stress.
- Standard load check valves provide positive clamp force.



GRAPPLES, SCRAP

SPECIFICATIONS

	HSG60	HSG66	HSG76	HSG82
Overall Width - in (mm)	60 (1524)	66 (1676)	77 (1956)	83 (2108)
Grapple Open - in (mm)	40 (1016)	40 (1016)	40 (1016)	40 (1016)
Grapple Closed - in (mm)	20 (508)	20 (508)	20 (508)	20 (508)
Overall Depth - in (mm)	38 (965)	38 (965)	38 (965)	38 (965)
Weight - lb (kg)	702 (318)	739 (335)	1081 (490)	1133 (514)

FEATURES & BENEFITS

- Heavy-duty design to withstand the demands of scrap handling, recycling, demolition and other harsh applications.
- Dual, independent grapples hold irregularly shaped material securely in place.
- 40" grapple opening allows for large payloads.
- Standard cylinder guards protect all cylinder components from potential damage.
- 1-1/4" hardened cylinder pins and 1/2" end plates for long life durability.
- 1-1/4" x 24" grapple pins greatly reduce torsional stress.
- Standard load check valves provide positive clamp force.



RAKES, AUTO

SPECIFICATIONS

	AR66	AR76
Working Width - in (mm)	63.5 (1613)	73.5 (1867)
Overall Width - in (mm)	74 (1880)	84 (2134)
Overall Height - in (mm)	40 (1016)	40 (1016)
Overall Depth - in (mm)	64 (1626)	64 (1626)
Weight - lb (kg)	1092 (496)	1200 (545)
Number of Teeth	396	462
Hopper Capacity - lb (kg)	1390 (630)	1485 (673)
Hyd Flow Range		
Min - gpm (lpm)	10 (38)	10 (38)
Max - gpm (lpm)	25 (94)	25 (94)
Max Operating Pressure - psi (bar)	3500 (241)	3500 (241)

FEATURES & BENEFITS

- Grooms and finishes soil in preparation for seed or sod.
- High speed rotating teeth break up clods of dirt and levels the soil.
- Collects rocks from 3/4" to 6" in diameter.
- Heavy-duty design features 1-3/4" hex drive shaft and pintle sprockets for long life and increased durability.
- Hydraulically operated hopper quickly and easily dumps collected rocks and debris.
- Single direction operation.



RAKES, LANDSCAPE POWER

SPECIFICATIONS

	PRM60	PRH60	PRM72
Raking Width - in (mm)	60 (1524)	60 (1524)	72 (1829)
Operating Width - in (mm)	72 (1828)	72 (1828)	81 (2057)
Length - in (mm)	64 (1626)	64 (1626)	64 (1626)
Angle Adjustment	Manual	Hydraulic	Manual
Max Angle, Left and Right	+/- 20°	+/- 20°	+/- 20°
Raking Width @ Full Angle - in (mm)	68 (1727)	68 (1727)	68 (1727)
Tooth Roller Diameter - in (mm)	9 (229)	9 (229)	9 (229)
Min Hydraulic Flow - gpm (lpm)	13 (49)	13 (49)	13 (49)
Weight - lb (kg)	990 (449)	950 (430)	900 (408)

FEATURES & BENEFITS

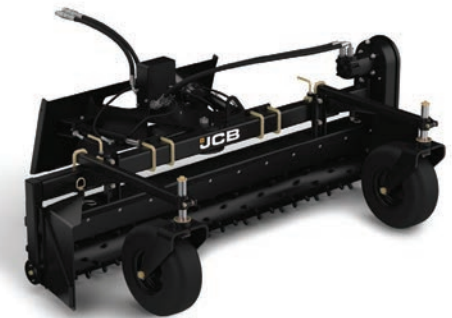
- Purpose-designed carbide teeth provide long life and are specifically shaped to ensure best possible seedbed preparation.
- Adjustable polyurethane barrier above roller allows the operator to choose the size of material left in the seedbed.
- Bi-directional raking capability allows quick seedbed preparation.
- Ability to angle rake 20° in either direction from center allowing material to be moved left or right.
- Quick and easy to remove end plates allow the power rake to perform like a box scraper.
- Dual independently adjustable wheels allows operator to adjust for skim passes for over-seeding or adjust to cut drainage grades.
- Triple-sealed and shielded bearings provide extra protection and long life.

SPECIFICATIONS

	PRH72	PRM84	PRH84
Raking Width - in (mm)	72 (1829)	84 (2234)	84 (2234)
Operating Width - in (mm)	81 (2057)	93 (2362)	93 (2362)
Length - in (mm)	64 (1626)	64 (1626)	64 (1626)
Angle Adjustment	Hydraulic	Manual	Hydraulic
Max Angle, Left and Right	+/- 20°	+/- 20°	+/- 20°
Raking Width @ Full Angle - in (mm)	68 (1727)	79 (2007)	79 (2007)
Tooth Roller Diameter - in (mm)	9 (229)	9 (229)	9 (229)
Min Hydraulic Flow - gpm (lpm)	13 (49)	13 (49)	13 (49)
Weight - lb (kg)	925 (420)	970 (440)	1050 (476)

SPECIFICATIONS

	PRM90	PRH90
Raking Width - in (mm)	90 (2286)	90 (2286)
Operating Width - in (mm)	100 (2540)	100 (2540)
Length - in (mm)	76 (1930)	76 (1930)
Angle Adjustment	Manual	Hydraulic
Max Angle, Left and Right	+/- 20°	+/- 20°
Raking Width @ Full Angle - in (mm)	85 (2159)	85 (2159)
Tooth Roller Diameter - in (mm)	9 (229)	9 (229)
Min Hydraulic Flow - gpm (lpm)	13 (49)	13 (49)
Weight - lb (kg)	1240 (562)	1320 (599)



Hydraulic angle models require JCB multi-function controls

RAKES, LANDSCAPE PREPARATOR

SPECIFICATIONS

	LSP66	LSP76
Working Width - in (mm)	66 (1676)	76 (1930)
Overall Width - in (mm)	75.25 (1911)	85.25 (2165)
Overall Height - in (mm)	34.88 (886)	34.88 (886)
Overall Depth - in (mm)	53 (1346)	53 (1346)
Weight - lb (kg)	1340 (607)	1520 (689)
Number of Teeth	300	340
Bucket Capacity - ft ³ (m ³)	10.3 (0.29)	12.5 (0.35)
Hyd Flow Range		
Min - gpm (lpm)	10 (38)	10 (38)
Max - gpm (lpm)	25 (95)	25 (95)
Operating Pressure - psi (bar)	3340 (230)	3340 (230)

FEATURES & BENEFITS

- Cleans up rock and debris while preparing soil for seeding and planting.
- Conditions the ground with scarifying action which can till the soil up to 2-1/2" deep.
- Bi-directional drum allows operation in forward or reverse for increased productivity.
- Follows the contour of the ground while picking up debris and rocks from 1" to 20" in diameter.
- Collection bucket has perforated floor allowing dirt to sift through and provides easy dumping of debris.
- Levels out ridges and ruts; removes grass in preparation for re-seeding.



ROCK SAWS

SPECIFICATIONS

	RS18HF	RS24HF
Overall Width - in (mm)	67 (1702)	67 (1702)
Transport Height - in (mm)	79 (2007)	81 (2057)
Transport Length - in (mm)	76 (1930)	86 (2184)
Max Cutting Depth - in (mm)	18 (457)	24 (609)
Operating Height (guide arm down) - in (mm)	39.5 (1003)	44 (1118)
Operating Height (guide arm up) - in (mm)	49.7 (1262)	58 (1473)
Operating Length (guide arm down) - in (mm)	119 (3023)	132 (3353)
Operating Length (guide arm up) - in (mm)	77 (1956)	89 (2261)
Side Shift - Center to Left - in (mm)	2.7 (68)	2.7 (68)
Side Shift - Center to Right - in (mm)	24 (609)	24 (609)
Spoil Removal Path - in (mm)	34 (863)	34 (863)
Cutting Wheel Diameter - in (mm)	48 (1219)	60 (1524)
Weight with 2.5" Cutting Wheel - lb (kg)	1995 (905)	2385 (1082)
Number of Picks	42	56
Hyd Flow Range		
Min - gpm (lpm)	29 (108)	29 (108)
Max - gpm (lpm)	35 (132)	35 (132)
Operating Pressure Range		
Min - psi (bar)	2500 (172)	2500 (172)
Max - psi (bar)	3340 (230)	3340 (230)

FEATURES & BENEFITS

- Allows slot cutting in pavement or asphalt for utility applications such as gas, water, sewer, and electrical repair or installation.
- Other applications include cutting for roadway expansion joints or asphalt patch cuts.
- High output steel planetary drive delivers high torque.
- Hydraulically adjusted depth and side shift functions are easily operated from inside the cab with JCB multi-function controls.
- Dual side discharge of material.
- Solid hardened steel wheels and greasable manifold pins.
- 18" or 24" max cutting depths available.



Requires JCB multi-function controls

SILAGE DEFACERS

SPECIFICATIONS

	SD96
Overall Width - in (mm)	96.9 (2461)
Overall Height - in (mm)	22.7 (576)
Overall Length - in (mm)	132.5 (3365)
Weight - lb (kg)	922 (418)
Recommended Hyd Flow - gpm (lpm)	18 (68) - 20 (75.7)
Max Operating Pressure - psi (bar)	3340 (230)

FEATURES & BENEFITS

- Inverted auger cutter design loosens and removes silage from compacted bunkers.
- Open frame design provides great visibility to the face of the bunker.
- Maintains a smooth compacted bunker face to reduce spoilage and improve palatability for livestock.
- Cutting action of defacer maintains original silage cut length.
- 96" wide cutting width with inboard mounted motor allows cutting next to adjacent bunker walls.
- Cutter constructed with abrasion resistant, high strength steel for long life.
- Frame stand protects cutting rotor during storage.



SNOW BLADES



FEATURES & BENEFITS

- All models feature replaceable wear edge, adjustable skid shoes and spring loaded trip mechanism.
- Standard-duty models feature seven gauge steel blade construction and include locking bolts for light-duty dozing applications.
- Heavy-duty models feature reinforced ten gauge steel blade construction.

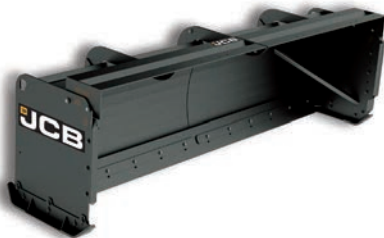
SPECIFICATIONS

	Width in (mm)	Height in (mm)	Degree of Angle	Cut Width @ Full Angle	Weight lb (kg)	Angle Adjustment
Standard-Duty Models						
SBM60	60 (1524)	23 (584)	+/- 30°	52 (1321)	430 (195)	Manual
SBM72	72 (1829)	23 (584)	+/- 30°	62 (1575)	595 (270)	Manual
SBM84	84 (2133)	23 (584)	+/- 30°	73 (1854)	635 (288)	Manual
SBM96	96 (2438)	23 (584)	+/- 30°	83 (2108)	650 (295)	Manual
SBH60	60 (1524)	23 (584)	+/- 30°	52 (1321)	470 (213)	Hydraulic
SBH72	72 (1829)	23 (584)	+/- 30°	62 (1575)	595 (270)	Hydraulic
SBH84	84 (2133)	23 (584)	+/- 30°	73 (1854)	635 (288)	Hydraulic
SBH96	96 (2438)	23 (584)	+/- 30°	83 (2108)	650 (295)	Hydraulic
Heavy-Duty Models						
HSB96	96 (2438)	32 (813)	+/- 30°	83 (2108)	780 (354)	Hydraulic
HSB108	108 (2743)	32 (813)	+/- 30°	93 (2362)	850 (385)	Hydraulic
HSB120	120 (3048)	32 (813)	+/- 30°	104 (2641)	925 (420)	Hydraulic

SNOW PUSHERS

FEATURES & BENEFITS

- Efficiently moves large volumes of snow and waste.
- All models feature reversible and replaceable wear shoes.
- Available in 72", 84" and 96" wide models.



SPECIFICATIONS

	SBM72	SBM84	SBM96
Overall Width - in (mm)	77.4 (1966)	89.4 (2270)	101.4 (2575)
Overall Height - in (mm)	37.2 (944)	37.2 (944)	37.2 (944)
Weight - lb (kg)	810 (367)	850 (430)	890 (403)
Angle Adjust	Manual	Manual	Manual

SNOW BLOWERS



FEATURES & BENEFITS

- JCB 2-stage hydraulic snow blowers are able to throw snow up to 45 feet.
- A poly-lined chute and deflector are easily adjusted to direct the snow discharge using the JCB multi-function controls.
- The direct drive hydraulic motor design eliminates unnecessary moving components, promoting less wear and longer life.
- The 25" (Standard Flow) and 36" (High Flow) shroud openings allow high volumes of snow to be moved quickly and efficiently.
- Includes adjustable skid shoes and bolt-on replaceable wear-resistant tapered steel edge.
- Provides excellent visibility to working area.

Requires JCB multi-function controls

SPECIFICATIONS

	SBL60	SBL72	SBL78	SBL84	SBL72HF	SBL72SPHF	SBL78HF	SBL78SPHF	SBL84HF
Cutting Width - in (mm)	60 (1524)	72 (1829)	78 (1981)	84 (2134)	72 (1829)	72 (1829)	78 (1981)	78 (1981)	84 (2134)
Cutting Height - in (mm)	24 (609)	25 (635)	25 (635)	25 (635)	36 (914)	35 (889)	36 (914)	35 (889)	36 (914)
Overall Height - in (mm)	50 (1270)	57 (1448)	57 (1448)	57 (1448)	74 (1880)	67 (1701)	74 (1880)	67 (1701)	74 (1880)
Overall Depth - in (mm)	38 (965)	38 (965)	38 (965)	38 (965)	43 (1092)	43 (1092)	43 (1092)	43 (1092)	43 (1092)
Number of Auger Motors	Single	Single	Single	Single	Dual	Dual	Dual	Dual	Dual
Auger Diameter - in (mm)	14 (355)	14 (355)	14 (355)	14 (355)	18 (457)	18 (457)	18 (457)	18 (457)	18 (457)
Fan Diameter - in (mm)	18 (457)	18 (457)	18 (457)	18 (457)	26 (660)	26 (660)	26 (660)	26 (660)	26 (660)
Hyd Flow Range									
Min - gpm (lpm)	18 (68)	18 (68)	18 (68)	18 (68)	30 (113)	19 (72)	30 (113)	19 (72)	30 (113)
Max - gpm (lpm)	27 (102)	27 (102)	27 (102)	27 (102)	42 (159)	34 (128)	42 (159)	34 (128)	42 (159)
Operating Pressure Range									
Min - psi (bar)	2000 (138)	2000 (138)	2000 (138)	2000 (138)	2500 (172)	2500 (172)	2500 (172)	2500 (172)	2500 (172)
Max - psi (bar)	3340 (230)	3340 (230)	3340 (230)	3340 (230)	3500 (241)	3500 (241)	3500 (241)	3500 (241)	3500 (241)
Weight - lb (kg)	820 (371)	685 (310)	703 (318)	720 (326)	1160 (526)	1260 (571)	1200 (544)	1295 (587)	1240 (562)

STUMP GRINDERS

SPECIFICATIONS

	SGS26	SG30HF
Overall Width - in (mm)	58 (1473)	58 (1473)
Overall Height - in (mm)	37 (940)	37 (940)
Overall Length - in (mm)	73 (1854)	73 (1854)
Below Ground Depth - in (mm)	10 (254)	12 (304)
Swing Arc - degrees	60°	60°
Vertical Lift Arc - degrees	43°	43°
Wheel Diameter	26 (660)	30 (762)
Number of Teeth	28	28
Hyd Flow Range		
Min - gpm (lpm)	16 (60)	25 (95)
Max - gpm (lpm)	22 (83)	40 (151)
Weight - lb (kg)	720 (327)	795 (361)

FEATURES & BENEFITS

- 60° of swing arc allows operator to cover 45" in a single cutting pass.
- Adjustable valve allows the operator to fine tune the speed control of the swing and lift functions for maximum performance.
- Able to grind stumps up to 12" below grade.
- The offset mounted arm design provides excellent visibility to the cutting area.
- Tooth design and pattern allows cutting in both side to side and vertical directions.
- Proven heavy-duty gearbox drive with torque arm motor support provides long motor and drive system life.
- The frame mounted grouser pads provide excellent stability while cutting.
- All functions easily controlled from inside the machine with the JCB multi-function controls.



Requires JCB multi-function controls

TILLERS

SPECIFICATIONS

	TLR52	TLR66HF	TLR78HF
Working Width - in (mm)	52 (1320)	66 (1676)	78 (1981)
Overall Width - in (mm)	67.8 (1722)	76 (1930)	88 (2235)
Overall Height - in (mm)	37.6 (955)	35 (890)	35 (890)
Cutting Depth - in (mm)	6 (152)	6 (152)	6 (152)
Number of Tines	24	32	40
Hyd Flow Range			
Min - gpm (lpm)	18 (68)	29 (110)	29 (110)
Max - gpm (lpm)	28 (106)	44 (167)	44 (167)
Weight - lb (kg)	810 (367)	1000 (454)	1300 (590)

FEATURES & BENEFITS

- The bi-directional operation allows you to till the ground in forward and reverse so you can complete the job in less time.
- Heavy-duty bi-directional tines till up to 6" deep.
- Heavy gauge front hood acts as a leveling board for tilled soil.
- The JCB tiller has a dual hitch design allowing center mount or offset mount for operating next to buildings or other objects.
- Available in 66" and 78" High Flow models.



TREE SPADES

FEATURES & BENEFITS

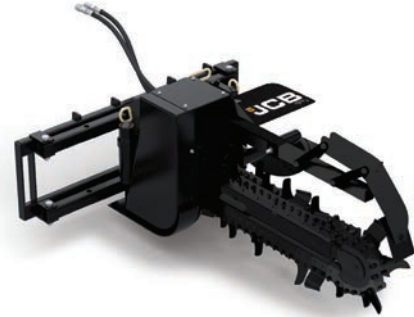
- Three models to accommodate root ball diameters from 18" to 44" or tree calipers between 1" to 4.5".
- The inside frame design and low profile towers allows operation in confined areas.
- The 25° cutting angle and extended cutting depth produce several uniform root ball sizes with one set of blades.
- Overlapping blades ensure clean root cutting and support of the root ball.
- The wide gate opening allows operator to easily clear trees when engaging.
- Pointed, high tensile, abrasion resistant blades for less resistance when penetrating the soil.
- Blade towers incorporate high density synthetic slides that are self lubricating promoting long life.
- Produces root balls that fit industry standard wire baskets for balled and burlap tree harvesting.



SPECIFICATIONS

	TS26	TS36	TS44
Overall Height (blades up) - in (mm)	51 (1295)	64.5 (1638)	64.5 (1638)
Overall Height (blades down) - in (mm)	53.5 (1359)	69 (1753)	69 (1753)
Shipping Height (blades removed) - in (mm)	32 (813)	38 (965)	38 (965)
Frame Height - in (mm)	22.5 (571)	22.5 (571)	22.5 (571)
Digging Depth - in (mm)	22 (559)	31 (787)	31 (787)
Cutting Angle - degrees	25°	25°	25°
Transport Width (gate open) - in (mm)	51 (1295)	66 (1676)	63 (1600)
Overall Width (gate closed) - in (mm)	66.5 (1689)	88.5 (2248)	107 (2718)
Max Gate Opening - in (mm)	29 (737)	40 (1016)	33 (838)
Overall Length - in (mm)	64 (1626)	75 (1905)	68 (1727)
Transport Length - in (mm)	63 (1600)	68 (1727)	69.5 (1765)
Max Leg Adjustment - in (mm)	10.5 (267)	10.5 (267)	10.5 (267)
Number of Blades	3	3	4
Tree Ball Diameter - in (mm)	18-26 (457-660)	24-36 (610-914)	30-44 (762-1118)
Tree Trunk Diameter - in (mm)	1.5-2.5 (38-63)	2.0-3.5 (51-89)	3.0-4.5 (76-114)
Tree Ball Weight Range - lb (kg)	150-500 (68-227)	250-1000 (113-453)	1200-1400 (544-635)
Hyd Flow Requirement - gpm (lpm)	10 (38)	10 (38)	10 (38)
Min Operating Pressure - psi (bar)	2250 (155)	2250 (155)	2250 (155)
Weight - lb (kg)	1100 (499)	1500 (680)	1825 (828)

TRENCHERS



FEATURES & BENEFITS

- High torque hydraulic motors provide maximum digging power for excellent productivity.
- Heavy-duty chain on Standard Flow models or planetary reduction on High Flow model multiplies torque to the cutting chain.
- Boom is spring loaded to reduce shock loads to the hydraulic motor and carrier.
- 2" pitch, 50,000 lb anti-back flex chain gives superior performance and long life.
- Self adjusting idler with sealed bearing is maintenance free.
- Two position, manual side shift feature allows trenching next to structures and single side spoil auger permits working in confined spaces.
- Replaceable headshaft driven auger for spoil removal.
- Pivoting crumber shoe and adjustable crumber bar aids in soil removal from trench.
- Replaceable, bolt-on wear strips help protect boom in harsh conditions for extended life.

SPECIFICATIONS

	TR30	TR36	TR48	TR48HF
Trench Depth @ 65° Digging Angle - in (mm)	30 (762)	36 (914)	48 (1219)	48 (1219)
Standard Trencher Chain Width - in (mm)	6 (152)	6 (152)	6 (152)	6 (152)
Recommended Trenching Angle	60 °	65 °	65 °	65 °
Headshaft Height @ 65° Trenching Angle - in (mm)	8 (203)	8 (203)	8 (203)	8 (203)
Overall Length - in (mm)	68 (1727)	73 (1854)	86 (2184)	86 (2184)
Overall Width - in (mm)	53 (1346)	53 (1346)	53 (1346)	53 (1346)
Overall Height - in (mm)	32 (813)	32 (813)	32 (813)	32 (813)
Spoil Discharge Reach - in (mm)	18 (457)	18 (457)	18 (457)	18 (457)
Side Shift - Right of Center - in (mm)	17 (432)	17 (432)	17 (432)	17 (432)
Hyd Flow Range				
Min - gpm (lpm)	14 (53)	14 (53)	14 (53)	29 (109)
Max - gpm (lpm)	22 (83)	22 (83)	22 (83)	35 (132)
Operating Pressure Range - psi (bar)	2000-3340 (138-230)	2000-3340 (138-230)	2000-3340 (138-230)	2000-3340 (138-230)
Weight - lb (kg)	1040 (473)	1040 (473)	1120 (508)	1120 (508)

VIBRATORY ROLLERS



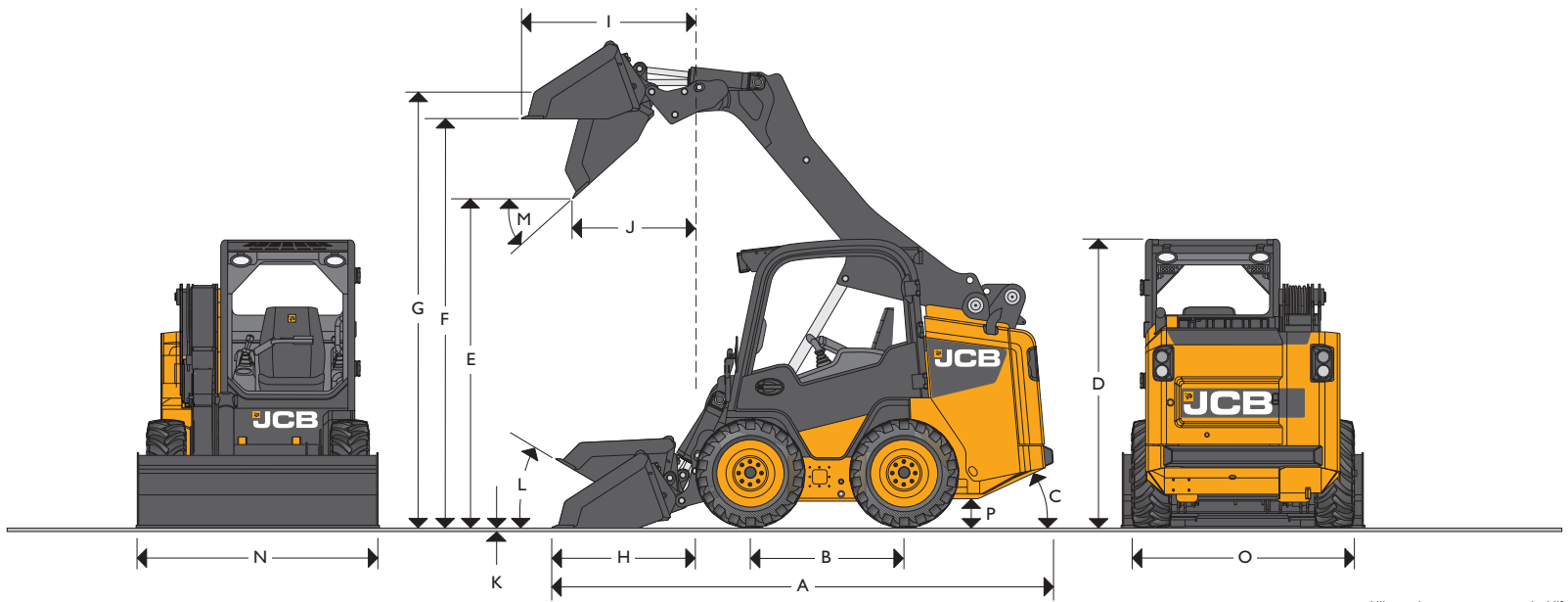
FEATURES & BENEFITS

- Produces up to 9370 lb of dynamic force for excellent compaction performance.
- Adjustable scraper blade between the frame and drum ensure smooth and uniform compaction.
- Hydraulic drive motors are protected and isolated to provide maximum performance and reliability.
- Drum oscillates +/- 15° for compaction on uneven terrain.
- Dual hitch design allows center mount or offset mount for operating next to buildings or other objects.
- Available in smooth drum or pad foot versions.

SPECIFICATIONS

	VR66S	VR73S	VR84S	VR66P	VR73P	VR84P
Drum Type	Smooth	Smooth	Smooth	Padded	Padded	Padded
Overall Width - in (mm)	72 (1829)	79 (2007)	90 (2286)	72 (1829)	79 (2007)	90 (2286)
Drum Width - in (mm)	66 (1676)	73 (1854)	84 (2134)	66 (1676)	73 (1854)	84 (2134)
Overall Height - in (mm)	30 (762)	31 (787)	31 (787)	30 (762)	31 (787)	31 (787)
Overall Length - in (mm)	39 (990)	39 (990)	39 (990)	39 (990)	39 (990)	39 (990)
Drum Diameter - in (mm)	24 (610)	24 (610)	24 (610)	20 (508)	20 (508)	20 (508)
Dynamic Force - lbs (kg)	7800 (3538)	8550 (3878)	9370 (4250)	7800 (3538)	8550 (3878)	9370 (4250)
Vibrating Speed - vpm	2600	2600	2600	2600	2600	2600
Vibrating Weight - lb (kg)	1190 (540)	1290 (585)	1440 (653)	1190 (540)	1225 (556)	1370 (621)
Drum Oscillation / Tilt - degrees	15°	15°	15°	15°	15°	15°
Maximum Hyd Flow - gpm (lpm)	25 (95)	25 (95)	25 (95)	25 (95)	25 (95)	25 (95)
Operating Weight - lb (kg)	2150 (975)	2300 (1043)	2530 (1148)	2085 (945)	2230 (1012)	2455 (1114)

Specifications are based on 20 gpm (78 lpm) hydraulic oil flow.



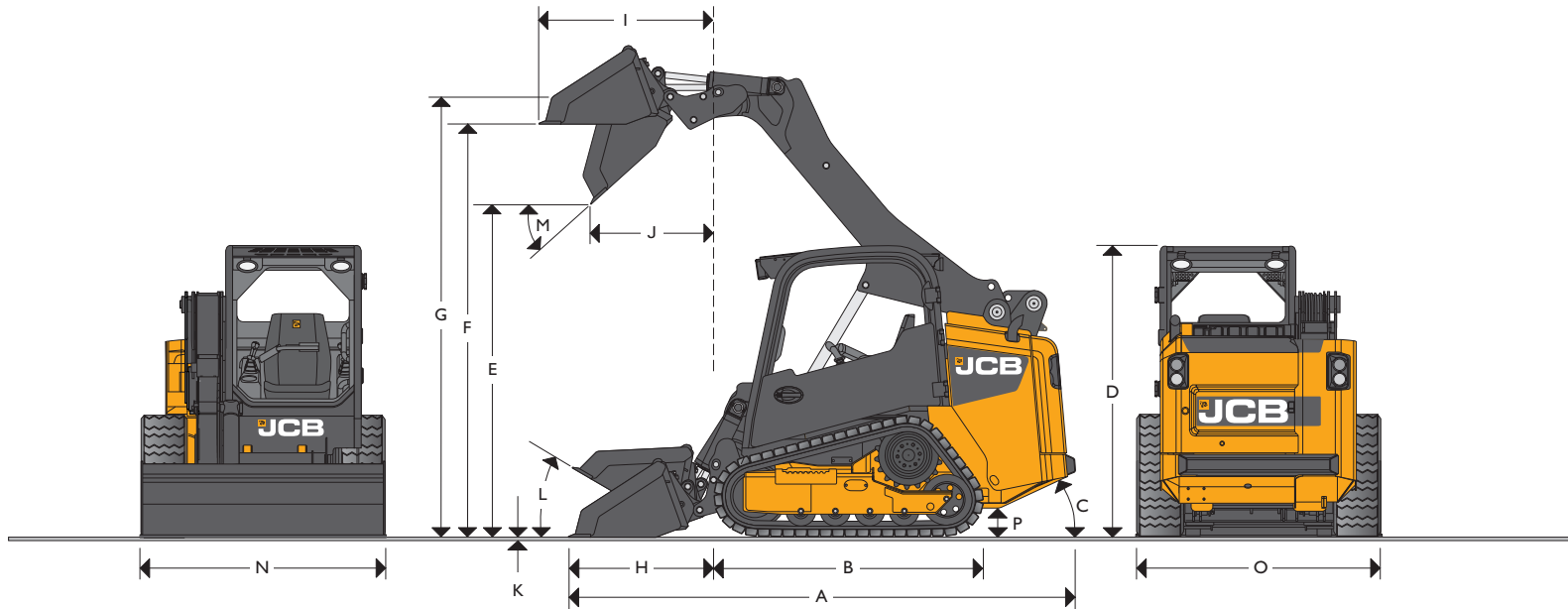
*Illustration represents vertical lift machine.
Specs in charts reflect changes in machines due to lift path.

STATIC DIMENSIONS – 135 / 155 / 175 / 190 / 205

Machine Models	135	155	175	190	205
	ft-in (m)	ft-in (m)	ft-in (m)	ft-in (m)	ft-in (m)
A Overall Length	11-5 (3.49)	11-5 (3.49)	11-7 (3.53)	11-8 (3.56)	11-10 (3.61)
B Wheel Base	3-6 (1.07)	3-6 (1.07)	3-6 (1.07)	3-6 (1.07)	3-6 (1.07)
C Angle of Departure	degrees 25°	degrees 25°	degrees 25°	degrees 25°	degrees 25°
D Overall Height	6-6 (1.98)	6-6 (1.98)	6-6 (1.98)	6-6 (1.98)	6-6 (1.98)
E Dump Height	7-5 (2.26)	7-5 (2.26)	7-5 (2.26)	7-5 (2.26)	7-5 (2.26)
F Loadover Height	9-4 (2.84)	9-4 (2.84)	9-4 (2.84)	9-4 (2.84)	9-4 (2.84)
G Height to Hinge Pin Fully Raised	9-10 (3.00)	9-10 (3.00)	9-10 (3.00)	9-10 (3.00)	9-10 (3.00)
H Reach @ Ground Level (cutting edge)	3-3 (1.00)	3-3 (1.00)	3-3 (1.00)	3-3 (1.00)	3-3 (1.00)
I Max Reach @ Full Height	3-0 (.91)	3-0 (.91)	3-2 (.97)	3-3 (.99)	3-5 (1.04)
J Reach @ Full Height - Fully Dumped	1-10 (.56)	1-10 (.56)	2-9 (.86)	2-9 (.86)	2-9 (.86)
K Dig Depth (toe plate horizontal) Clearance	in (mm) -0.4 (-10)	in (mm) -0.4 (-10)	in (mm) -0.4 (-10)	in (mm) -0.4 (-10)	in (mm) -0.4 (-10)
L Rollback @ Ground	degrees 30°	degrees 30°	degrees 30°	degrees 30°	degrees 30°
M Dump Angle	degrees 42°	degrees 42°	degrees 42°	degrees 42°	degrees 42°

Machine Models	135	155	175	190	205
	ft-in (m)	ft-in (m)	ft-in (m)	ft-in (m)	ft-in (m)
N Bucket Width - Standard	5-0 (1.52)	5-5 (1.68)	5-5 (1.68)	5-8 (1.73)	6-0 (1.83)
Bucket Width - Optional	4-6 (1.37)	5-0 (1.52)	5-8 (1.73)	6-0 (1.83)	5-8 (1.68)
O Width Over Tires - Standard	4-11 (1.52)	5-3 (1.60)	5-3 (1.60)	5-3 (1.60)	5-3 (1.60)
Width Over Tires - Optional	4-5 (1.37)	5-0 (1.52)	5-0 (1.52)	5-0 (1.52)	5-0 (1.52)
Rated Operating Capacity	lb SAE (kg) 1350 (612.3)	1550 (703.1)	1750 (793.8)	1900 (861.8)	2050 (929.9)
Bucket Capacity - Standard	yd³ (m³) .47 (.36)	.52 (.40)	.52 (.40)	.53 (.41)	.57 (.44)
Turning Radius					
Bucket Corner Radius	6-10 (2.09)	6-10 (2.09)	6-10 (2.09)	6-10 (2.09)	6-10 (2.09)
Quick Hitch Radius	3-7 (1.10)	3-7 (1.10)	3-9 (1.14)	3-9 (1.14)	3-9 (1.14)
Rear Chassis Radius	5-5 (1.65)	5-5 (1.65)	5-5 (1.65)	5-5 (1.65)	5-5 (1.65)
P Ground Clearance	in (mm) 8.3 (210)	8.3 (210)	8.3 (210)	8.3 (210)	8.3 (210)
Lift Path	Radial	Radial	Vertical	Vertical	Vertical
Hydraulic Flow - Standard Flow / High Flow	gpm 18.5 / n/a	18.5 / 26.4	18.5 / 26.4	18.5 / 26.4	18.5 / 26.4

SMALL PLATFORM SKID STEER SPECIFICATIONS

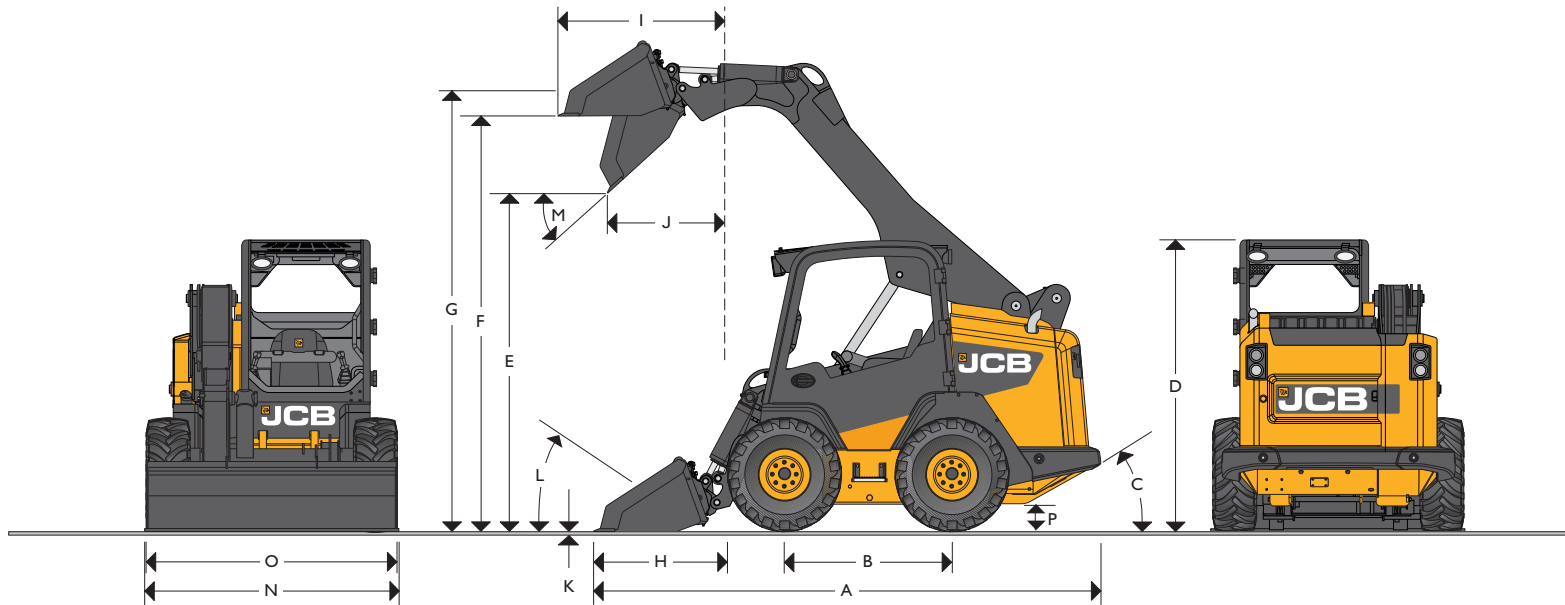


* Illustration represents vertical lift machine.
Specs in charts reflect changes in machines due to lift path.

STATIC DIMENSIONS – 150T / 190T / 205T

Machine Models		150T	190T	205T
		ft-in (m)	ft-in (m)	ft-in (m)
A	Overall Length	11-5 (3.49)	11-7 (3.53)	11-9 (3.58)
B	Track Base	5-10 (1.78)	5-10 (1.78)	5-10 (1.78)
C	Angle of Departure	degrees 27°	degrees 27°	degrees 27°
D	Overall Height	6-7 (2.00)	6-7 (2.00)	6-7 (2.00)
E	Dump Height	7-6 (2.29)	7-6 (2.29)	7-6 (2.29)
F	Loadover Height	9-4 (2.85)	9-4 (2.85)	9-4 (2.85)
G	Height to Hinge Pin Fully Raised	9-11 (3.02)	9-11 (3.02)	9-11 (3.02)
H	Reach @ Ground Level	3-7 (1.08)	3-3 (1.00)	3-3 (1.00)
I	Max Reach @ Full Height	3-3 (0.99)	4-0 (1.21)	4-0 (1.21)
J	Reach @ Full Height - Fully Dumped	2-1 (0.64)	2-9 (0.85)	2-9 (0.85)
K	Dig Depth Clearance	in (mm) -0.4 (-10)	in (mm) -0.4 (-10)	in (mm) -0.4 (-10)
L	Rollback @ Ground	degrees 30°	degrees 30°	degrees 30°
M	Dump Angle	degrees 42°	degrees 42°	degrees 42°

Machine Models		150T	190T	205T
		ft-in (m)	ft-in (m)	ft-in (m)
N	Bucket Width - Standard	5-8 (1.73)	5-8 (1.73)	6-0 (1.83)
	Bucket Width - Optional	5-6 (1.68)	6-0 (1.83)	5-8 (1.68)
O	Width Over Tracks - Standard	5-5 (1.68)	5-5 (1.68)	5-5 (1.68)
	Width Over Tracks - Optional	5-5 (1.68)	5-5 (1.68)	5-5 (1.68)
	Rated Operating Capacity	lb SAE (kg) 1500 (680.4)	1900 (861.8)	2050 (929.9)
	Bucket Capacity - Standard	yd ³ (m ³) .53 (.41)	.53 (.41)	.57 (.44)
Turning Radius				
	Bucket Corner Radius	6-10 (2.09)	6-10 (2.09)	6-10 (2.09)
	Quick Hitch Radius	3-9 (1.10)	3-9 (1.14)	3-9 (1.14)
	Rear Chassis Radius	5-5 (1.65)	5-5 (1.65)	5-5 (1.65)
P	Ground Clearance	in (mm) 9.1 (230)	9.1 (230)	9.1 (230)
	Ground Bearing Pressure with 12.6" wide tracks (320 mm)	psi (Kp) 6.75 (46.6)	6.20 (42.6)	6.50 (44.5)
	Lift Path	Radial	Vertical	Vertical
	Hydraulic Flow - Standard Flow / High Flow	gpm 18.5 / 26.4	18.5 / 26.4	18.5 / 26.4



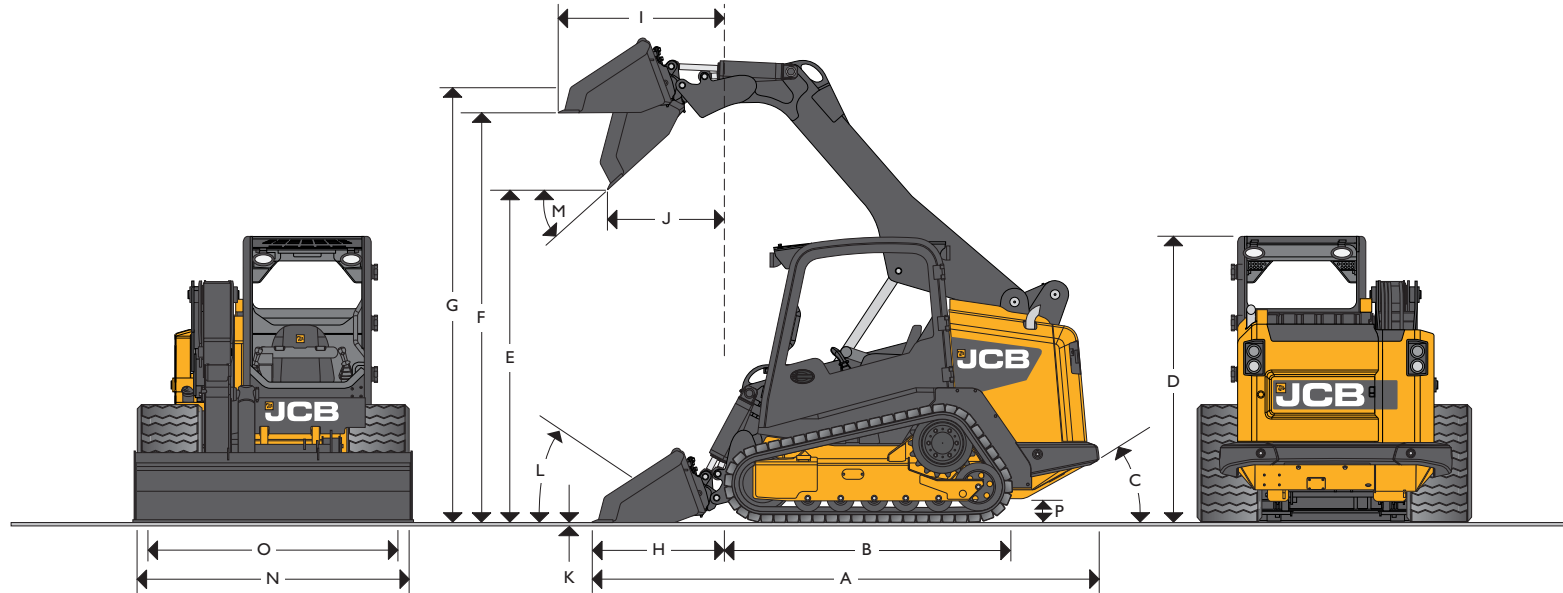
*Illustration represents vertical lift machine.
Specs in charts reflect changes in machines due to lift path.

STATIC DIMENSIONS – 225 / 260 / 280 / 300 / 330

Machine Models	225	260	280	300	330
	ft-in (m)	ft-in (m)	ft-in (m)	ft-in (m)	ft-in (m)
A Overall Length	12-2 (3.69)	12-2 (3.69)	12-4 (3.76)	12-5 (3.78)	12-7 (3.80)
B Wheel Base	4-0 (1.22)	4-0 (1.22)	4-0 (1.22)	4-0 (1.22)	4-0 (1.22)
C Angle of Departure	degrees 28.7°	28.7°	28.7°	28.7°	29.1°
D Overall Height	6-10 (2.09)	6-10 (2.09)	6-10 (2.09)	6-10 (2.09)	6-11 (2.11)
E Dump Height	8-1 (2.46)	8-1 (2.46)	8-1 (2.46)	8-1 (2.46)	8-2 (2.49)
F Loadover Height	9-10 (3.02)	9-10 (3.02)	9-10 (3.02)	9-10 (3.02)	10 (3.05)
G Height to Hinge Pin Fully Raised	10-5 (3.175)	10-5 (3.175)	10-5 (3.175)	10-5 (3.175)	10-6 (3.2)
H Reach @ Ground Level	3-2.5 (0.98)	3-2.5 (0.98)	3-2.5 (0.98)	3-5 (1.04)	3-5 (1.04)
I Max Reach @ Full Height	3-2 (.96)	4-0.5 (1.23)	4-0.5 (1.23)	4-0.5 (1.23)	3-11 (1.2)
J Reach @ Full Height - Fully Dumped	1-11 (.59)	2-10 (0.87)	2-10 (0.87)	2-11 (0.90)	2-11 (0.90)
K Dig Depth (toe plate horizontal) Clearance	in (mm) -3/8 (-10)	-3/8 (-10)	-3/8 (-10)	-3/8 (-10)	0
L Rollback @ Ground	degrees 30°	30°	30°	30°	29°
M Dump Angle	degrees 42°	42°	42°	42°	42°

Machine Models	225	260	280	300	330
	ft-in (m)	ft-in (m)	ft-in (m)	ft-in (m)	ft-in (m)
N Bucket Width - Standard	6-0 (1.82)	6-0 (1.82)	6-0 (1.82)	6-0 (1.82)	6-6 (1.98)
O Width Over Tires - Standard	6-0 (1.82)	6-0 (1.82)	6-0 (1.82)	6-0 (1.82)	6-2 (1.87)
Width Over Tires - Optional	6-2 (1.87)	6-2 (1.87)	6-2 (1.87)	6-2 (1.87)	6-0 (1.82)
Rated Operating Capacity 50%	lb (kg) 2250 (1021)	2600 (1179)	2800 (1270)	3000 (1361)	3295 (1495)
Bucket Capacity - Standard	yd ³ (m ³) .62 (.47)	.62 (.47)	.62 (.47)	.67 (.51)	.67 (.51)
Turning Radius					
Bucket Corner Radius	7-3 (2.20)	7-3 (2.20)	7-3 (2.20)	7-3 (2.20)	7-3 (2.20)
Quick Hitch Radius	4-10.5 (1.48)	4-10.5 (1.48)	4-10.5 (1.48)	4-10.5 (1.48)	4-10.5 (1.48)
Rear Chassis Radius	5-9.5 (1.76)	5-9.5 (1.76)	5-9.5 (1.76)	5-9.5 (1.76)	5-9.5 (1.76)
P Ground Clearance	in (mm) 9.4 (238)	9.4 (238)	9.4 (238)	9.4 (238)	9.8 (248)
Lift Path	Radial	Vertical	Vertical	Vertical	Vertical
Hydraulic Flow - Standard Flow / High Flow	gpm 23 / 35.7	23 / 35.7	23 / 35.7	23 / 35.7	23 / 35.7

LARGE PLATFORM SKID STEER SPECIFICATIONS



*Illustration represents vertical lift machine.
Specs in charts reflect changes in machines due to lift path.

STATIC DIMENSIONS – 225T / 260T / 300T / 320T

Machine Models	225T	260T	300T	320T
	ft-in (m)	ft-in (m)	ft-in (m)	ft-in (m)
A Overall Length	12-2 (3.69)	12-2 (3.69)	12-5 (3.78)	12-5 (3.78)
B Track Base	6-11 (2.1)	6-11 (2.1)	6-11 (2.1)	6-11 (2.1)
C Angle of Departure	degrees 28.7°	28.7°	28.7°	28.7°
D Overall Height	6-10 (2.08)	6-10 (2.08)	6-10 (2.08)	6-10 (2.08)
E Dump Height	7-11 (2.42)	7-11 (2.42)	7-10 (2.39)	7-10 (2.39)
F Loadover Height	9-10 (2.99)	9-10 (2.99)	9-10 (2.99)	9-10 (2.99)
G Height to Hinge Pin Fully Raised	10-5 (3.18)	10-5 (3.18)	10-5 (3.18)	10-5 (3.18)
H Reach @ Ground Level	3-2 (0.96)	3-2 (0.96)	3-5 (1.04)	3-5 (1.04)
I Max Reach @ Full Height	3-1 (.935)	4 (1.21)	4.3 (1.30)	4.3 (1.30)
J Reach @ Full Height - Fully Dumped	1-11 (5.85)	2-10.5 (0.87)	2-11 (0.90)	2-11 (0.90)
K Dig Depth Clearance	in (mm) -3/8 (-10)	-3/8 (-10)	-3/8 (-10)	-3/8 (-10)
L Rollback @ Ground	degrees 30°	30°	30°	30°
M Dump Angle	degrees 42°	42°	42°	42°

Machine Models	225T	260T	300T	320T
	ft-in (m)	ft-in (m)	ft-in (m)	ft-in (m)
N Bucket Width - Standard	6-6 (1.98)	6-6 (1.98)	7-0 (2.13)	7-0 (2.13)
O Width Over Tracks - Standard	6-1 (1.85)	6-6 (1.98)	6-6 (1.98)	6-6 (1.98)
Rated Operating Capacity 35%	lb (kg) 2250 (1021)	2600 (1179)	3000 (1361)	3200 (1452)
Rated Operating Capacity 50%	lb (kg) 3214 (1458)	3994 (1812)	4314 (1957)	4573 (2074)
Bucket Capacity - Standard	yd ³ (m ³) .79 (.59)	.79 (.59)	.84 (.64)	.84 (.64)
Turning Radius				
Bucket Corner Radius	7-4.5 (2.24)	7-4.5 (2.24)	7-4.5 (2.24)	7-4.5 (2.24)
Quick Hitch Radius	4-10.5 (1.48)	4-10.5 (1.48)	4-10.5 (1.48)	4-10.5 (1.48)
Rear Chassis Radius	5.95 (1.76)	5.95 (1.76)	5.95 (1.76)	5.95 (1.76)
P Ground Clearance	in (mm) 9.8 (248)	9.8 (248)	9.8 (248)	9.8 (248)
Ground Bearing Pressure*	psi (Kp) 4.36 (30.1)	4.6 (31.7)	4.8 (33.1)	4.9 (33.8)
Lift Path	Radial	Vertical	Vertical	Vertical
Hydraulic Flow - Standard Flow / High Flow	gpm 23 / 35.7	23 / 35.7	23 / 35.7	23 / 35.7

* with 17.7" wide tracks (450 mm)

A few words about JCB



Sir Anthony Bamford, the son of Mr. JCB, still runs the company today.

A family company on a global scale

JCB is no ordinary company. From the dreams of one man, Joseph Cyril Bamford, we have grown into the world's biggest privately owned construction equipment company by volume. Since 1945, the same attention to detail, passion for progress and family spirit has taken us from strength to strength. Today JCB operates across five continents, manufacturing at 18 factories in the UK, Brazil, Germany, China, North America and India. With 1500 dealerships selling and supporting our products in over 150 countries, we are one of the top three manufacturers of construction equipment with some of the finest engineering facilities in the world.

A history of world-class innovation

Our business has always been driven by innovation, using only the most advanced technology, components, processes, meticulous design and rigorous testing. Evidence of this doesn't come much more powerful than our revolutionary JCB Dieselmix engine. Having grabbed the headlines when it smashed the world land speed record at 350.092 mph, it is now providing our customers with tomorrow's performance today.

Sustainability in all we do

As a manufacturer of working machinery, operating in both established and emerging markets, we accept the challenge of helping to deliver economic and environmental sustainability.

Product innovations that provide the right solutions to our customers have been a vital part of our history and will be key to our sustainable future. But in addition to developing cleaner and more efficient machines, we have a commitment to ensuring our manufacturing facilities meet the highest environmental standards.

A commitment to our customers that goes on

That's a fact we remind ourselves of constantly, and it's the reason our customers are at the heart of everything we do. Whatever a customer needs, we make it our mission to provide world-class support and 100% satisfaction. At the heart of this is a dedication to minimizing machine downtime. So our state-of-the-art World Parts Center dispatches more than a million genuine parts and attachments every week, with an 'Anywhere in 24 hours' strategy. Our JCB-trained technicians provide excellent, expert customer care, whether it's routine servicing or something more urgent.



1 out of every 2 backhoe loaders sold in the world is a JCB.

1940's



Joseph Cyril Bamford builds his first two-wheeled tipping trailer using a war-surplus Jeep axle and wheels in this rented garage in the United Kingdom.

1950's



JCB continues to expand its product line and moves its factory to larger quarters. By inventing the first backhoe loader, JCB revolutionizes the construction industry by giving contractors access to simple, powerful earthmovers.

1960's



JCB expands its factory, virtually doubling production capabilities. The company launches the forerunner of today's Jet Visit Program, acquiring an airplane and flying in customers for factory tours.

1970's



As demand for JCB products soars, the company exports its machines to Germany, Holland, Italy, Spain and Canada. JCB's loadall telescopic handler revolutionizes the building industry by enabling bricks to be lifted on pallets.



Built in 2000, the JCB North American Headquarters in Savannah, Georgia supports all United States and Canadian dealers and manufactures the world's safest skid steer and compact track loader.

JCB in North America

JCB has been in North America for over 40 years and made a huge commitment to the market in 2000 when the North American business and manufacturing center was built in Savannah, Georgia. From this 500,000 square foot facility, JCB supports over 100 dealers in the United States and Canada, providing parts, training and expertise. The Savannah manufacturing floor produces the world's safest skid steer and compact track loader.

From Savannah, we are also proud to manufacture the High Mobility Engineer Excavator (HMEE), a high-speed fully armored backhoe loader currently in use by the U.S. Army in Iraq and Afghanistan.



- Manufacturing Facilities
- Parts Distribution Centers
- Dealers

To find out more about the full range of JCB construction equipment, and to find the dealer nearest you please visit www.jcbna.com.



Built in Savannah, the fully armored JCB High Mobility Engineer Excavator (HMEE) is the world's toughest backhoe. The JCB HMEE is currently deployed by the U.S. Army in Iraq and Afghanistan.

1980's



JCB expands its product range to wheeled and tracked excavators. The company develops the first – and still the only – true, high-speed tractor, the Fastrac. JCB launches its telescopic handler in the U.S.

1990's



The revolutionary one-armed skid steer is introduced to the compact range of equipment, quickly heralded as the safest skid steer on the market because of it's unique side-door entry.

2000's



JCB builds it's North American headquarters near Savannah. The JCB Dieselmax engine breaks the land speed record. JCB begins manufacturing its own diesel engines. The U.S. Army contracts for 800 HMEES, to be built in Savannah

Tomorrow

JCB is committed to continuously developing innovative machines that will better help our customers get the job done. Our family of dealers will continue to grow, ensuring you the world-class service and support no matter where you operate your JCB.



Connect with JCB

 /JCB  /JCBNA  /JCBNORTHAMERICA

JCB Headquarters – Savannah, 2000 Bamford Blvd., Savannah, Georgia, 31322

Tel: (912) 447-2000 Web: www.jcbna.com

JCB reserves the right to change specifications without notice. Some machines shown within this brochure are fitted with optional equipment which may vary between dealerships.

