

NEW



ARTICULATED TELESCOPIC | TM220

Gross power: 74hp | Pay load: 4410lb | Lift height: 15ft 0in



PRODUCTIVE PERFORMANCE.

Hydrostatic drive makes the TM220 very easy to operate even for the inexperienced. That means there's less risk of overpowering the machine at a cost to fuel economy.

THE JCB TM220 IS A HIGHLY PRODUCTIVE AND MULTIFUNCTIONAL ARTICULATED TELESCOPIC MACHINE WITH OPTIMAL POWER-TO-WEIGHT RATIO, MAKING IT PERFECT MATERIAL HANDLERS. THE TM220 IS TIER 4 FINAL COMPLIANT USING JUST AN DIESEL OXIDATION CATALYST (DOC). IT IS ALSO MORE FRUGAL THAN THE OUTGOING TIER 3 MODEL.



JCB Diesel by Kohler.

1 JCB has worked in close collaboration with Kohler to produce the ultimate compact engine. No engine power is wasted on a DPF and, with peak power and torque produced at low revs, you get good fuel economy too.

2 Our TM220 machine is equipped with a variable speed engine crank-driven cooling fan that maintains optimum fan speed for all requirements without using any excess engine power.

3 The JCB TM220 has high speed axles – this provides a 25mph top speed.



1



2



3

Moving with the times.

4 JCB's articulated steering boasts an easy-to-use built-in sideshift – ideal for placing bales and changing attachments.

5 So that you can tailor your TM220 to any application, we offer several axle options. Open diffs are ideal for hard ground, and limited slip diffs excel when traction is at a premium. Our 100% switchable front axle diff lock on the TM220, meanwhile, provides ultimate traction on muddy terrain and won't damage the ground when it's not in use. It can also be engaged on the move and under load.

6 Power from the driveline is transferred to the ground very efficiently through an innovative chassis, with perfect harmony between all components. This makes our machines the best possible solution.

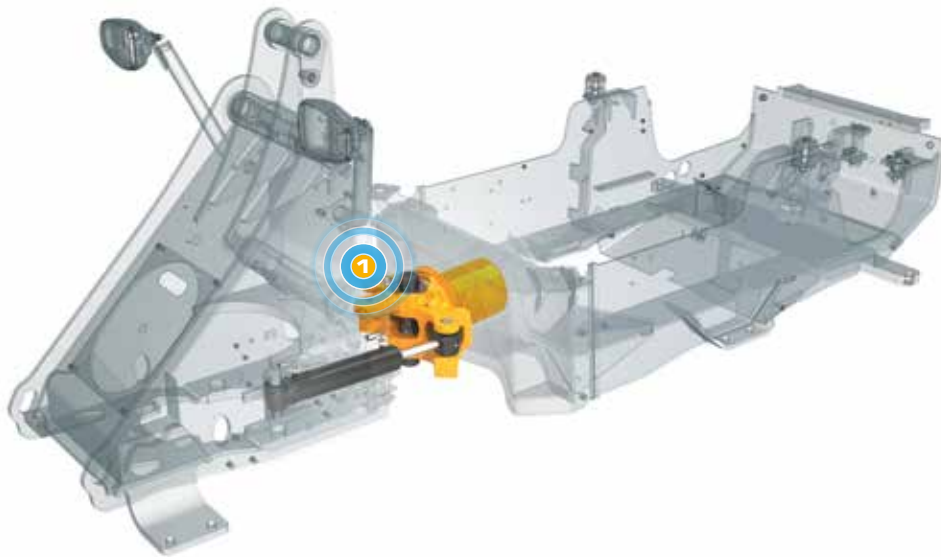
Versatility by the bucketload.

7 By splitting power between the transmission and the hydraulics, our inching pedal allows precise, efficient, stepless load handling.



QUALITY, RELIABILITY AND DURABILITY.

AT JCB, WE UNDERSTAND THAT AN ARTICULATED TELESCOPIC LOADER IS A KEY PART OF ANY FARMING OPERATION. THAT'S WHY THE TM220 IS BUILT ON A FOUNDATION OF QUALITY AND RELIABILITY, ENSURING THAT THEY'LL ALWAYS BE A KEY PART OF YOUR WORKING PROCESS.



We've used only the very finest engine, driveline and axle components on the TM220, from suppliers like DANA and Bosch.



Built to last.

- 1 We understand how tough materials handling can be, so our TM220 was developed to be highly durable. A case in point is our heavy-duty center joint, which oscillates through $\pm 40^\circ$, with 10° lateral oscillation to keep all 4 wheels on the ground
- 2 The TM220 machines benefits from a strong chassis and the best possible weight distribution.



Quality design.

- 3** The TM220 has rear lights that are recessed within the solid counterweight casting for good impact protection.
- 4** Hydraulic hoses are always well protected; they're neatly routed, properly clamped, and positioned well away from potential pinching spots.
- 5** We use state-of-the-art manufacturing processes like robot machining, precision paint technology and innovative assembly techniques to achieve the very highest levels of quality.
- 6** Precision machining provides high tolerances and accurate location of pins and bushes.
- 7** Finite element analysis and rig testing ensure superior structural strength and durability. Cold cell testing guarantees starting performance at very low temperatures.



COMFORT AND EASE OF USE.

THE TM220 IS DESIGNED TO MAKE WORK MORE STRAIGHTFORWARD. IT'S EASY TO ACCESS, INTUITIVE TO OPERATE, AND IT IS CONTROLLED FROM THE CENTER OF THE MACHINE FOR SUPERB VISIBILITY. AFTER ALL, A COMFORTABLE, CONFIDENT OPERATOR IS A MORE PRODUCTIVE ONE.

A comfortable operator.

- 1** The TM220 benefits from a comfortable and spacious cab. The operating position is designed for optimum all-round visibility, unhindered by components like large exhaust pipes.
- 2** Our tilting telescopic steering column is easy to adjust for an ergonomic driving position.
- 3** All the instruments needed to operate a JCB machine are within easy reach of the seat, so there's no need to hunt around for information whilst working.
- 4** With a fully opening right-hand window operators can enjoy increased ventilation whilst still being protected from dust.



In-cab noise levels on these machines are lower than outgoing models.



In complete control.

5 A stylish, modern central dash display combines analogue dials and a color LCD screen – this can display machine health details, service requirements, operating information and more.

6 This compact machine is equipped with a new ergonomically designed joystick control system for comfortable and intuitive operation and consistent with all TM and agri Loadalls.



SERVICEABILITY.

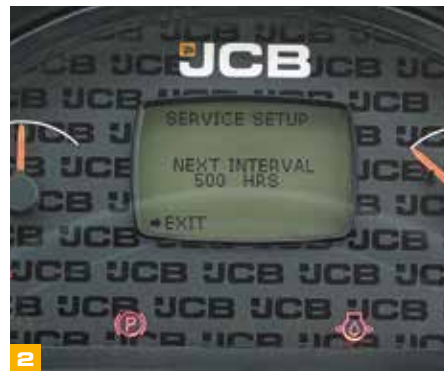
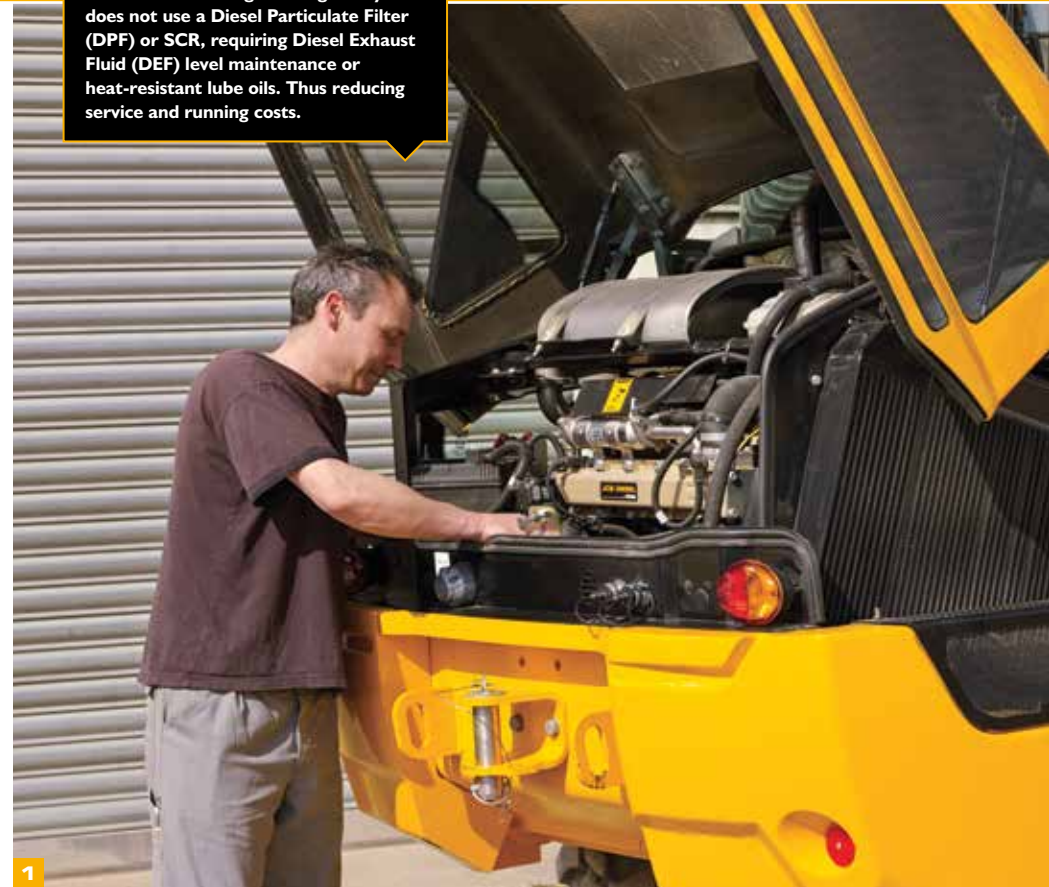
AN ARTICULATED TELESCOPIC MACHINE NEEDS TO SPEND AS MUCH TIME AS POSSIBLE HARD AT WORK. THAT'S WHY THE TM220 BENEFITS FROM INNOVATIVE DESIGN AND QUALITY COMPONENTS, ALLOWING THEM TO OFFER MAXIMUM UPTIME WITH LONG SERVICE INTERVALS.

Access all areas.

- 1 Our large single piece hood ensures quick and convenient access to the engine bay and cooling pack areas. All daily check points are easily accessed under the hood.
- 2 Operators, managers and dealers alike can access vital information like machine running times and error alerts – it's all available at the touch of a button on the in-cab display or if needed via JCB's LiveLink telematics system.
- 3 The TM220 has a cyclonic pre-filter which maximizes air filtration and extends filter element service intervals significantly.

- 4 Your local JCB dealer will be able to supply all parts for your TM220, even JCB Diesel by Kohler engine components. TM220 also shares parts with other JCB machinery, which makes everything even more readily available.

The new Kohler engine designed by JCB does not use a Diesel Particulate Filter (DPF) or SCR, requiring Diesel Exhaust Fluid (DEF) level maintenance or heat-resistant lube oils. Thus reducing service and running costs.



SAFETY AND SECURITY.

BECAUSE SAFETY AND SECURITY ARE PARAMOUNT ON ANY FARM, THE TM220 IS DESIGNED TO PROTECT THE OPERATORS AND BYSTANDERS AT ALL TIMES. GREAT VISIBILITY AND NON-SLIP SURFACES ARE JUST THE START.

Safety first.

1 With no exhaust after treatment, our JCB Diesel by Kohler engines are extremely compact, so there's no compromise to visibility. The sloping rear hood provides an unimpeded view, with the exhaust silencer and air intake filter both packaged out of sight.

2 We've fitted an in-cab electronic 2-stage quickhitch isolation system to prevent uncontrolled release of attachments.

3 Access steps are complemented by well positioned handles so that operators have three points of contact whenever they're entering or exiting the cab.

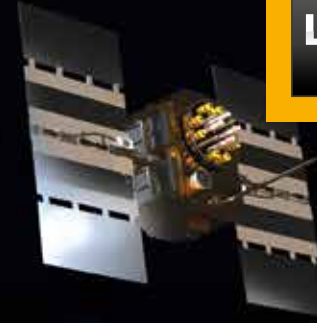


LIVELINK, WORK SMARTER.

LIVELINK IS AN INNOVATIVE SOFTWARE SYSTEM THAT LETS YOU MANAGE JCB MACHINES REMOTELY – ONLINE, BY EMAIL OR BY MOBILE PHONE. ACCESS EVERYTHING FROM MACHINE ALERTS TO FUEL REPORTS AND HISTORY INFORMATION, WITH ALL DATA STORED AT A SECURE CENTER.

Productivity and cost benefits

By providing information like idle time monitoring and machine fuel consumption, JCB Livelink helps reduce your fuel usage, saving money and improving productivity. Machine location information can help improve efficiency and perhaps even reduce insurance costs.



Maintenance benefits

Manage machine maintenance easily – accurate hours monitoring and service alerts improve maintenance planning, while real-time location data helps you manage your fleet. Critical machine alerts and maintenance history records are also available.



Security benefits

Livelink's real-time geofencing alerts tell you when machines move out of predetermined zones, and real-time curfew alerts inform you of authorized usage. Further benefits include real-time location information.



VALUE ADDED.

JCB'S WORLDWIDE CUSTOMER SUPPORT IS FIRST CLASS. WHATEVER YOU NEED AND WHEREVER YOU ARE, WE'LL BE AVAILABLE QUICKLY AND EFFICIENTLY TO HELP MAKE SURE YOUR MACHINERY IS PERFORMING TO ITS FULL POTENTIAL.

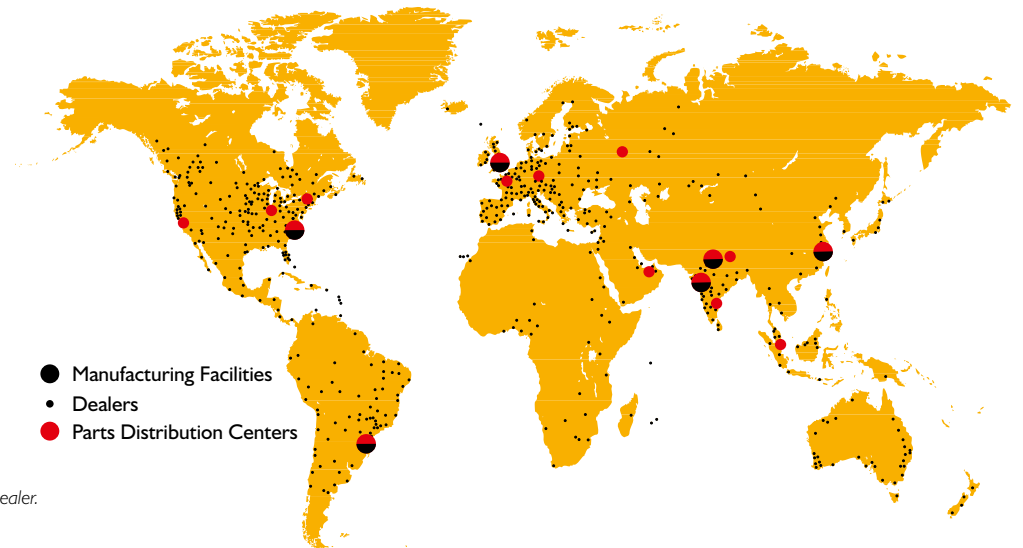


1 Our Technical Support Service provides instant access to factory expertise, day or night, while our Finance and Insurance teams are always on hand to provide fast, flexible, competitive quotes.

2 The global network of JCB Parts Centers is another model of efficiency; with 15 regional bases, we can deliver around 95% of all parts anywhere in the world within 24 hours. Our genuine JCB parts are designed to work in perfect harmony with your machine for optimum performance and productivity.

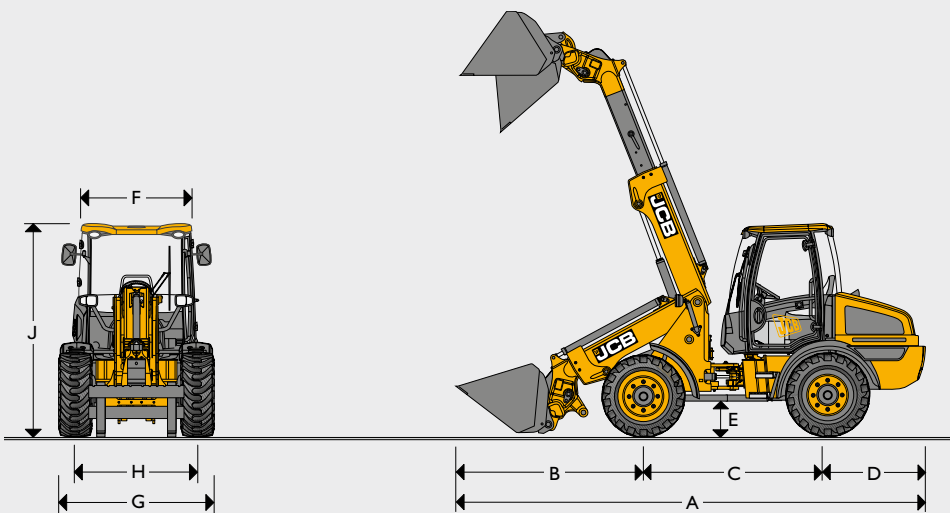


3 JCB Assetcare offers comprehensive extended warranties and service agreements, as well as service-only or repair and maintenance contracts. Irrespective of what you opt for, our Maintenance teams around the world charge competitive labour rates, and offer non-obligation quotations as well as fast, efficient insurance repair work.



Note: JCB LIVELINK and JCB EXTENDED WARRANTY may not be available in your region, so please check with your local dealer.

STATIC DIMENSIONS



A	Overall length	ft-in (mm)	19-8 (5998)
B	Axle to pivot pin	ft-in (mm)	4-2 (1269)
C	Wheelbase	ft-in (mm)	7-3 (2205)
D	Axle to counterweight face	ft-in (mm)	4-3 (1295)
E	Minimum ground clearance	ft-in (mm)	1-1 (330)
F	Width over cab	ft-in (mm)	4-10 (1468)
G	Width over tires	ft-in (mm)	6-3 (1902)
H	Wheel track	ft-in (mm)	4-11 (1490)
J	Height over cab	ft-in (mm)	8-8 (2634)
	Front axle weight	lb (kg)	5803 (2632)
	Rear axle weight	lb (kg)	8516 (3863)
	Total weight	lb (kg)	14319 (6495)
	Inside turn radius	ft-in (mm)	6-10 (2090)
	Maximum turn radius over shovel	ft-in (mm)	15-7 (4755)
	Maximum turn radius over tire	ft-in (mm)	13-3 (4030)
	Articulation angle	deg	±40°

Data based on machine equipped with pin mounted 0.9 m³ bucket with toe plates and Michelin XMCL 400/70R20 wheels and tires.

ENGINE

Type	4 stroke, Electronic Common Rail	
Model	JCB Diesel by Kohler KDI 2504 TCR	
Capacity	liter	2.482
Aspiration	Turbocharged	
Cylinders	4	
Max gross power to SAE J1995/ISO 14396	hp (kW)	74 (55) @ 2200rpm
Max torque	Nm @ 1500rpm	300
Emissions	Tier 4 FINAL	

TRANSMISSION

Type	Hydrostatic	
Model	Rexroth A6VM - 2 speed	
Model (40kph options)	Rexroth A6VM - 3 speed	
Low range	mph (kph)	3.75 (6)
High range	mph (kph)	12.5 (20)
High speed (optional)	mph (kph)	25 (40)

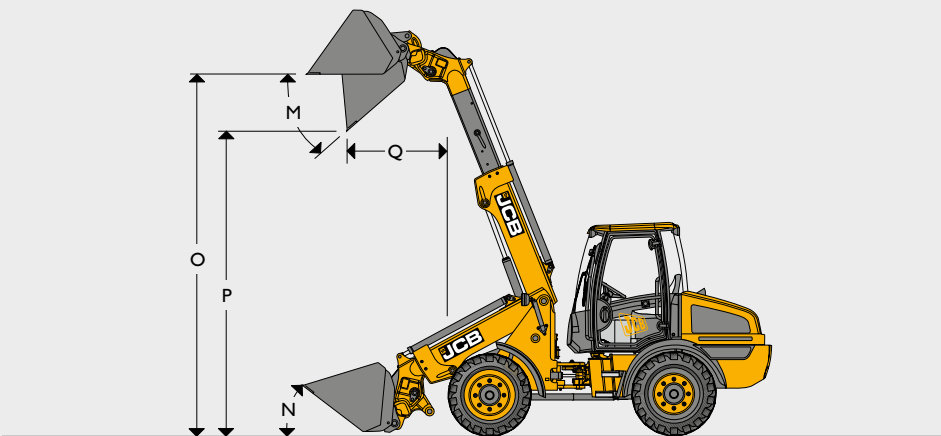
AXLES

Type	Straight beam	
Make and model	Dana 111	

STEERING Hydraulic power steering system emergency steering.

BRAKES In board oil immersed brakes with combined handbrake; spring actuated hydraulic released park brake.

LOADER DIMENSIONS



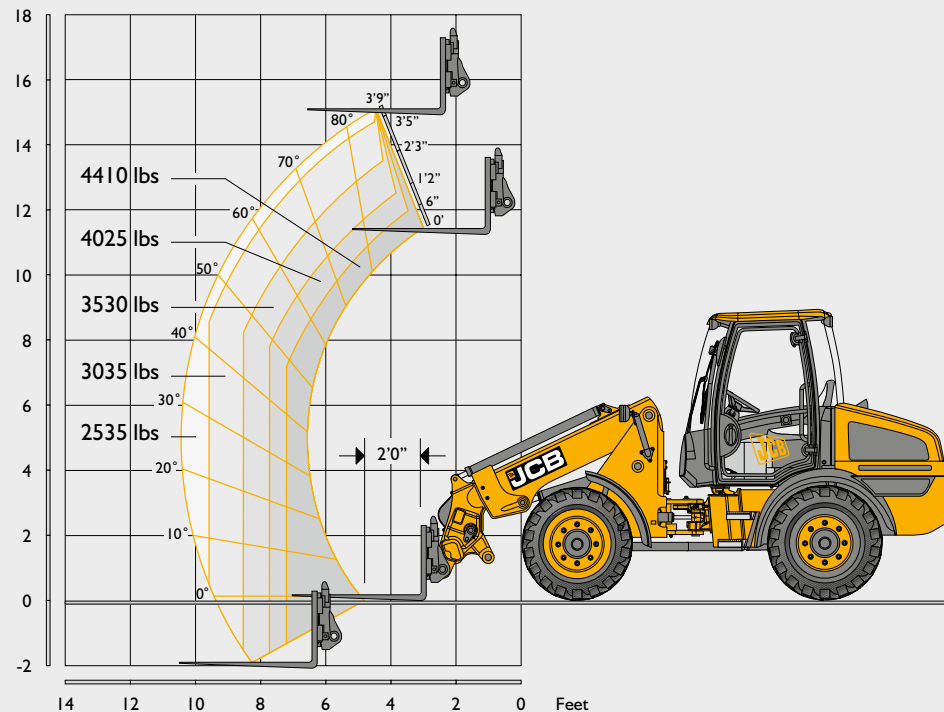
Bucket type		General purpose
Bucket equipment		Teeth or toeplate
Bucket capacity (SAE heaped)	yd ³ (m ³)	1.2 (0.9)
Bucket width	in (mm)	78 (1981)
Bucket weight	lb (kg)	816 (370)
Maximum material density *	lb/yd ³ (kg/m ³)	3426 (1554)
Payload *	lb (kg)	4849 (2200)
Maximum breakout force	lbf (kN)	10993 (48.9)
M Dump angle maximum	degrees	43
N Roll back at carry	degrees	43
Roll back at ground level	degrees	31
O Load over height - with bucket	ft-in (mm)	14-4 (4376)
P Dump height (45 deg dump)	ft-in (mm)	12-0 (3652)
Q Reach at dump height	ft-in (mm)	3-10 (1175)
Operating weight (includes full fuel tank)	lb (kg)	18730 (8496)

TIRE SIZE

Tire size	Manufacturer	Type	Op weight lb (kg)	Dimensions	
				Vertical in (mm)	Width in (mm)
16.0/70-20	Goodyear	SGL	-26 (-12)	0.2 (5)	0.2 (5)
380/75 R20	Michelin	XMCL	-0.5 (-12.8)	0 (0)	0.75 (19)
400/70 R20	Michelin	XMCL	0 (0)	0 (0)	0 (0)
405/70 R20	Michelin	XZSL	1 (25)	1 (25)	0.25 (6)

Loader dimensions quoted on 400/70R20 Wheels and Tires.

LOADER DIMENSIONS – FORK FRAME WITH FORKS



Fork carriage width	in (mm)	53 (1345)
Length of tines	in (mm)	42 (1069)
Reach at ground level	in (mm)	3-5 (1043)
Maximum forward reach	in (mm)	10-0 (3041)
Boom, horizontal height	in (mm)	4-11 (1497)
Max. lift height with forks	in (mm)	15-0 (4562)
Reach at maximum height	in (mm)	3-11 (1200)
Payload	lb (kg)	4410 (2000)
Full turn tipping load - forks with 24" (600mm) load center	lb (kg)	5436 (2465)
Full turn tipping load - forks calculated @ 80% load factor	lb (kg)	4348 (1972)
Full turn tipping load - forks calculated @ 60% load factor	lb (kg)	3261 (1479)
Attachment weight	lb (kg)	421 (191)
Straight tipping load - forks with 24" (600mm) load center	lb (kg)	6965 (3160)

CAB	In-cab noise level: 76dB(A)
------------	-----------------------------

ELECTRICAL SYSTEM

System voltage	Volt	12
Alternator output	Amp hour	80
Battery capacity	Amp hour	100

HYDRAULICS

Pump type		Single Gear Pump
Pump max. flow	gpm (l/min)	23.5 (89)
Pump max. pressure	psi (bar)	3625 (250)
Hydraulic cycle times at full engine		
Boom raise	Seconds	4.3
Boom lower	Seconds	4.5
Extend	Seconds	3.6
Retract	Seconds	2.9
Bucket dump	Seconds	3.4
Bucket crowd	Seconds	2.8
Total cycle	Seconds	21.5

SERVICE FILL CAPACITIES

Hydraulic system	gal (liter)	18.5 (70)
Fuel tank	gal (liter)	21 (80)
Engine oil sump	gal (liter)	2.96 (11.2)
Axle oil (front)	gal (liter)	1.6 (4.4)
Axle oil (rear)	gal (liter)	1.60 (6.05)

STANDARD EQUIPMENT

GENERAL MACHINE FEATURES	Parallel lift geometry, JCB compact tool carrier Quickhitch, articulated steering, front and rear fenders, one piece opening hood, recovery hitch, lifting lugs, temperature controlled engine cooling fan, HBCV, End damping on extend/retract.
TRANSMISSION	Two speed, neutral start, inching function, forward/reverse switch on joystick control lever.
BRAKES	In board oil immersed brakes with combined handbrake; spring actuated hydraulic released parkbrake.
ELECTRIC	Full road lighting, direction indicators and battery isolator.
HYDRAULICS	Single lever servo control, gear pump with priority steer, emergency steer back up, flow sharing.
CAB	ROPS/FOPS safety structure, roof widow, fully opening RH window, fully adjustable seat, interior light, adjustable tilt steering column, safety glass, LCD display, front and rear screen wash/wipe, 3 speed heater fan with replacable filters, radio aperture, sun visors.

OPTIONAL EQUIPMENT

GENERAL MACHINE FEATURES	LSD axles, locking differential front axle with on the move operation, under hood battery isolator, worklights, air conditioning, adjustable constant flow, 3-stage SRS.
---------------------------------	--





ONE COMPANY, OVER 300 MACHINES.

Articulated Telescopic TM220

Gross power: 74hp Pay load: 4410lb Lift height: 15ft 0in

JCB North American - Headquarters

Savannah, 2000 Bamford Blvd., Savannah, Georgia, 31322 Tel: (912) 447-2000

Download the very latest information on this product range at agriculture.jcbna.com

JCB inc. All rights reserved. No part of this publication may be reproduced, stored in a retrieval system, or transmitted in any form or by any other means, electronic, mechanical, photocopying or otherwise, without prior permission from JCB inc. All references in this publication to operating weights, sizes, capacities and other performance measurements are provided for guidance only and may vary dependant upon the exact specification of machine. They should not therefore be relied upon in relation to suitability for a particular application. Guidance and advice should always be sought from your JCB Dealer. JCB reserves the right to change specifications without notice. Illustrations and specifications shown may include optional equipment and accessories. The JCB logo is a registered trademark of J C Bamford Excavators Ltd.

Your nearest JCB Dealer

DWUSA 5856 1/15

 /JCBNA
  /JCBNA
  /JCBNORTHAMERICA

