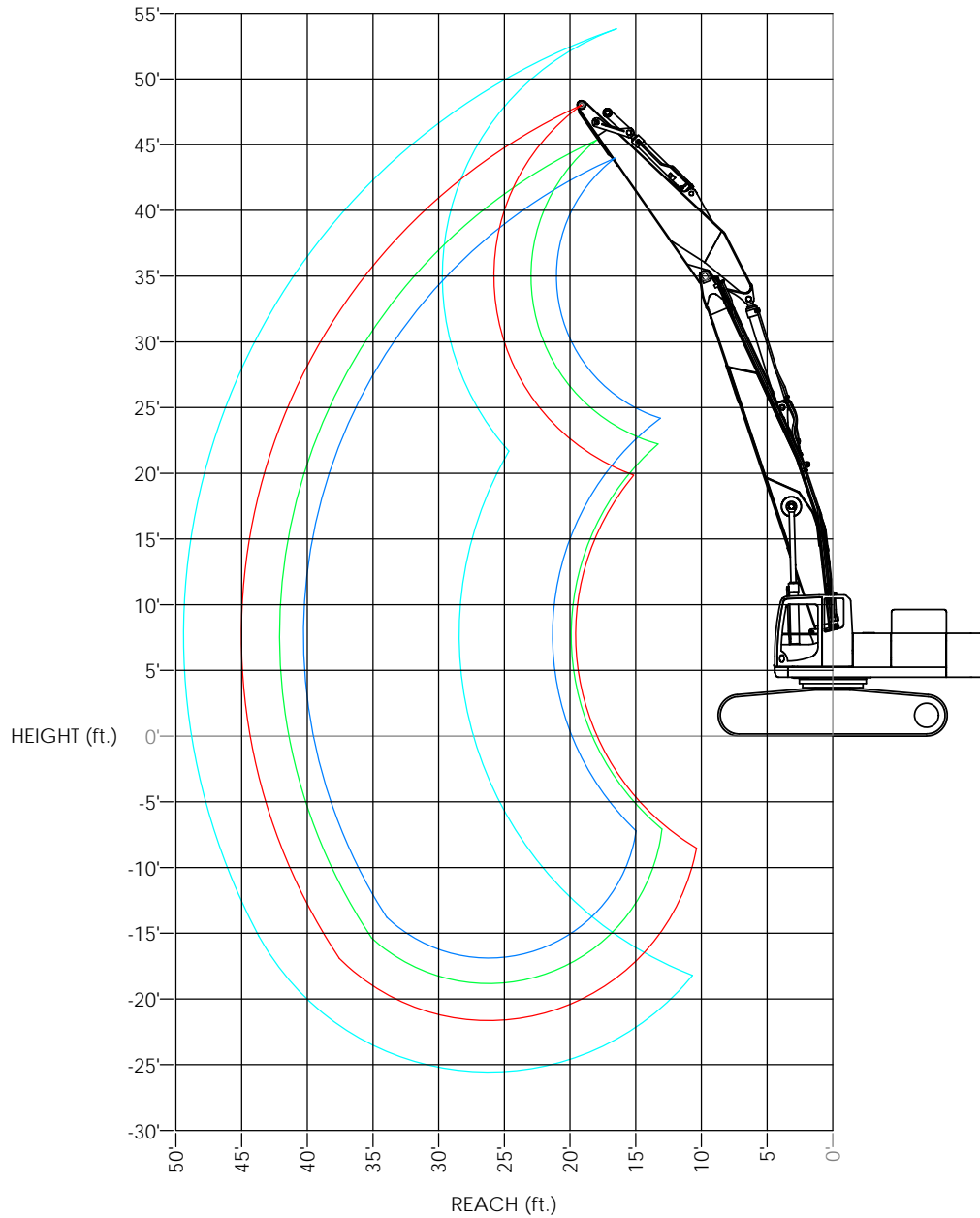


REVISIONS				
ZONE	REV.	DESCRIPTION	DATE	APPROVED



TOOL \ STICK	20'-0" CUSTOM STICK W/SK350 TIP	16'-1" FACTORY STICK	13'-3" FACTORY STICK	11'-4" FACTORY STICK
HDR70	A			
UP30R	A			
MSD1500R	A			
MDP35R (CC JAW)	A			
HDR100		A	A	A
LMB8055		A	A	A
MSD2000R		A	A	A
MSD2250R		X	Y	A
MDP50R (CC JAW)		X	Y	A

A = APPROVED OVER ENTIRE RANGE WITH HEAVY LIFT ON  
X = APPROVED TO A MAXIMUM HORIZONTAL REACH OF 35' ONLY WITH HEAVY LIFT ON  
Y = APPROVED ABOVE GROUND LEVEL ONLY WITH HEAVY LIFT ON

**CONFIGURATION:**  
28'-9" STRAIGHT BOOM  
20'-0" CUSTOM STICK W/SK350 TIP  
16'-1" FACTORY STICK (SHOWN)  
13'-3" FACTORY STICK  
11'-4" FACTORY STICK  
12,600# ADDITIONAL COUNTERWEIGHT

MATERIAL:		
GRADE:	WALK:	SIZE:
DESIGN:	REV:	DATE:
APPROVED:		
REV:	DATE:	



4805 SCOOPY LANE NW  
CARROLL, OHIO 43112  
740-654-5304

*The Cutting Edge of Customer Service*

<small>PROPRIETARY AND CONFIDENTIAL  THE INFORMATION CONTAINED HEREIN  IS THE SOLE PROPERTY OF  COMPANY WRENCH. ANY  REPRODUCTION OR  DISSEMINATION OF THIS  INFORMATION WITHOUT THE WRITTEN PERMISSION OF  COMPANY WRENCH IS PROHIBITED.</small>	<small>UNLESS OTHERWISE SPECIFIED  DIMENSIONS IN PARENTS ARE  AS FOLLOWS:</small> DECIMAL: .0001" FRACTIONAL: 1/16" ANGULAR: .1°	<small>SCALE: 1:55</small> <small>SIZE: D</small>	<small>TITLE:</small> <b>SK500LC - 28'-9" STR. BOOM RANGE</b>	<small>DATE:</small> <b>0M20180-1</b>
	<small>WEIGHT:</small>	<small>SHEET 1 OF 1</small>	<small>DWG./PART NO.</small>	<small>DATE</small>

# Lifting Capacities

P/N 0M20180-2



SK500LC  
28'-9" Straight Boom  
20'-0" Custom Stick  
With SK350 Tip

Lift capacities calculated at attachment pivot point on stick (lbs).  
No attachment on stick. Attachment weight must be subtracted.  
Heavy Lift On

REACH																HEIGHT
45'		40'		35'		30'		25'		20'		15'		10'		
Side	Front	Side	Front	Side	Front	Side	Front	Side	Front	Side	Front	Side	Front	Side	Front	
								* 25,516	* 25,516							50'
						* 20,122	* 20,122									45'
				* 17,968	* 17,968	* 17,584	* 17,584									40'
		14,454	* 16,716	* 17,040	* 17,040	* 14,605	* 14,605									35'
		14,680	* 16,221	* 15,248	* 15,248	* 12,715	* 12,715									30'
11,618	* 15,315	14,549	* 16,249	* 14,385	* 14,385	* 11,745	* 11,745									25'
11,548	* 15,267	14,246	* 16,526	* 14,481	* 14,481	* 11,828	* 11,828									20'
11,344	* 15,359	13,844	* 16,924	* 15,765	* 15,765	* 13,492	* 13,492									15'
11,090	* 15,449	13,402	* 17,327	16,438	* 18,696	* 18,114	* 18,114									10'
10,842	* 15,407	12,978	* 17,607	15,784	* 20,239	19,609	* 23,772									5'
10,646	* 15,077	12,621	* 17,621	15,235	* 20,541	18,799	* 24,387									0'
10,552	* 14,210	12,376	* 17,201	14,844	* 20,346	18,239	* 24,326									-5'
10,648	* 12,167	12,283	* 16,104	14,640	* 19,462	17,943	* 23,424	22,841	* 28,599							-10'
		12,396	* 13,874	14,649	* 17,620	17,910	* 21,485	22,829	* 26,145	31,038	* 32,117					-15'
		* 8,757	* 8,757	* 14,291	* 14,291	18,149	* 18,170	* 22,219	* 22,219	* 26,852	* 26,852	* 32,222	* 32,222			-20'
						* 12,734	* 12,734	* 16,306	* 16,306							-25'

The following notes pertain to this machine equipped with 35.4" wide track pads and 12,600# additional counterweight:

1. Do not attempt to lift or hold any load that exceeds these rated values at their specified load radii and heights.
2. The least stable position is over the side.
3. The operator should be fully acquainted with machine operation before operating the machine.
4. Lifting capacities assume a machine standing on level, firm and uniform supporting surface. Operator must make allowance for job conditions such as soft or uneven ground, out of level conditions, side loads, sudden stopping of loads, hazardous conditions, inexperienced personnel, etc.
5. The above theoretical ratings are based on calculations derived from standard O.E.M. lift charts. They do not exceed 87% of hydraulic lifting capacity or 75% of tipping capacity. Rated loads marked with an asterisk (\*) are limited by hydraulic lifting capacity.
6. Do not boom down with tool on the ground and front fully retracted, doing so may cause damage to machine.

# Lifting Capacities

P/N 0M20180-3



SK500LC  
28'-9" Straight Boom  
16'-1" Factory Stick

Lift capacities calculated at attachment pivot point on stick (lbs).  
No attachment on stick. Attachment weight must be subtracted.  
Heavy Lift On

REACH																HEIGHT
45'		40'		35'		30'		25'		20'		15'		10'		
Side	Front	Side	Front	Side	Front	Side	Front	Side	Front	Side	Front	Side	Front	Side	Front	
																50'
								* 21,490	* 21,490							45'
						* 20,520	* 20,520	* 22,051	* 22,051							40'
				17,217	* 18,153	* 19,752	* 19,752									35'
				17,456	* 18,241	* 19,752	* 19,752	* 18,435	* 18,435							30'
		13,535	* 16,967	17,233	* 18,388	* 20,308	* 20,308	* 18,664	* 18,664							25'
		13,374	* 17,024	16,785	* 18,840	* 21,238	* 21,238	* 21,803	* 21,803	* 20,031	* 20,031	* 17,465	* 17,465			20'
		13,069	* 17,221	16,217	* 19,421	20,518	* 22,339	* 26,553	* 26,553	* 33,277	* 33,277					15'
10,505	* 14,021	12,722	* 17,386	15,620	* 19,957	19,557	* 23,362	25,221	* 28,342	34,055	* 36,434					10'
10,410	* 14,362	12,400	* 17,357	15,080	* 20,260	18,718	* 24,035	23,925	* 29,474	32,049	* 33,066					5'
		12,164	* 16,944	14,668	* 20,139	18,098	* 24,112	23,058	* 29,607	* 29,767	* 29,767					0'
		12,066	* 15,878	14,430	* 19,391	17,740	* 23,398	22,619	* 28,605	30,635	* 35,383	* 13,670	* 13,670			-5'
		12,187	* 13,578	14,401	* 17,740	17,650	* 21,702	22,545	* 26,399	30,731	* 32,164	* 23,596	* 23,596			-10'
				14,634	* 14,658	17,833	* 18,723	22,788	* 22,824	* 27,259	* 27,259	* 31,436	* 31,436			-15'
						* 13,794	* 13,794	* 17,459	* 17,459	* 20,543	* 20,543					-20'
																-25'

The following notes pertain to this machine equipped with 35.4" wide track pads and 12,600# additional counterweight:

1. Do not attempt to lift or hold any load that exceeds these rated values at their specified load radii and heights.
2. The least stable position is over the side.
3. The operator should be fully acquainted with machine operation before operating the machine.
4. Lifting capacities assume a machine standing on level, firm and uniform supporting surface. Operator must make allowance for job conditions such as soft or uneven ground, out of level conditions, side loads, sudden stopping of loads, hazardous conditions, inexperienced personnel, etc.
5. The above theoretical ratings are based on calculations derived from standard O.E.M. lift charts. They do not exceed 87% of hydraulic lifting capacity or 75% of tipping capacity. Rated loads marked with an asterisk (\*) are limited by hydraulic lifting capacity.
6. Do not boom down with tool on the ground and front fully retracted, doing so may cause damage to machine.

# Lifting Capacities

P/N OM20180-4



SK500LC  
28'-9" Straight Boom  
13'-3" Factory Stick

Lift capacities calculated at attachment pivot point on stick (lbs).  
No attachment on stick. Attachment weight must be subtracted.  
Heavy Lift On

REACH																HEIGHT
45'		40'		35'		30'		25'		20'		15'		10'		
Side	Front	Side	Front	Side	Front	Side	Front	Side	Front	Side	Front	Side	Front	Side	Front	
																50'
																45'
								* 24,765	* 24,765							40'
						* 21,820	* 21,820	* 23,681	* 23,681							35'
				17,180	* 19,972	* 21,513	* 21,513	* 23,912	* 23,912							30'
				17,161	* 19,823	* 21,947	* 21,947	* 24,963	* 24,963	* 24,044	* 24,044					25'
		13,420	* 18,125	16,816	* 20,127	21,337	* 22,778	* 26,582	* 26,582	* 32,543	* 32,543					20'
		13,258	* 18,121	16,341	* 20,563	20,499	* 23,746	26,502	* 28,399	35,929	* 36,019					15'
		13,013	* 18,069	15,845	* 20,915	19,672	* 24,561	25,134	* 29,883	33,531	* 37,710					10'
		12,795	* 17,739	15,419	* 20,967	18,990	* 24,926	24,103	* 30,516	* 24,482	* 24,482					5'
		12,677	* 16,838	15,126	* 20,497	18,535	* 24,592	23,504	* 30,014	* 27,632	* 27,632					0'
		12,761	* 14,675	15,015	* 19,246	18,334	* 23,358	23,294	* 28,311	31,574	* 34,220	* 14,052	* 14,052			-5'
				15,134	* 16,773	18,393	* 20,982	23,402	* 25,340	* 29,911	* 29,911	* 27,594	* 27,594			-10'
				* 11,600	* 11,600	* 16,986	* 16,986	* 20,840	* 20,840	* 24,117	* 24,117					-15'
																-20'
																-25'

The following notes pertain to this machine equipped with 35.4" wide track pads and 12,600# additional counterweight:

1. Do not attempt to lift or hold any load that exceeds these rated values at their specified load radii and heights.
2. The least stable position is over the side.
3. The operator should be fully acquainted with machine operation before operating the machine.
4. Lifting capacities assume a machine standing on level, firm and uniform supporting surface. Operator must make allowance for job conditions such as soft or uneven ground, out of level conditions, side loads, sudden stopping of loads, hazardous conditions, inexperienced personnel, etc.
5. The above theoretical ratings are based on calculations derived from standard O.E.M. lift charts. They do not exceed 87% of hydraulic lifting capacity or 75% of tipping capacity. Rated loads marked with an asterisk (\*) are limited by hydraulic lifting capacity.
6. Do not boom down with tool on the ground and front fully retracted, doing so may cause damage to machine.

**Lifting Capacities**  
P/N 0M20180-5



SK500LC  
28'-9" Straight Boom  
11'-4" Factory Stick

Lift capacities calculated at attachment pivot point on stick (lbs).  
No attachment on stick. Attachment weight must be subtracted.  
Heavy Lift On

REACH																HEIGHT
45'		40'		35'		30'		25'		20'		15'		10'		
Side	Front	Side	Front	Side	Front	Side	Front	Side	Front	Side	Front	Side	Front	Side	Front	
																50'
																45'
										* 29,653	* 29,653					40'
								* 25,352	* 25,352							35'
						22,364	* 22,837	* 25,410	* 25,410	* 28,108	* 28,108					30'
				17,175	* 20,907	22,021	* 23,124	* 26,389	* 26,389	* 31,151	* 31,151	* 27,957	* 27,957			25'
				16,932	* 21,041	21,370	* 23,848	27,796	* 27,931	* 34,480	* 34,480					20'
				16,521	* 21,342	20,589	* 24,686	26,408	* 29,596	35,373	* 37,786					15'
		13,300	* 18,336	16,089	* 21,532	19,838	* 25,317	25,159	* 30,798							10'
		13,175	* 17,643	15,732	* 21,370	19,249	* 25,428	24,291	* 31,008							5'
				15,518	* 20,603	18,894	* 24,771	23,858	* 30,010	* 22,045	* 22,045					0'
				15,499	* 18,890	18,793	* 23,129	23,786	* 27,798	32,244	* 32,553					-5'
				* 15,435	* 15,435	18,956	* 20,200	24,008	* 24,280	* 27,794	* 27,794					-10'
						* 15,225	* 15,225	* 19,076	* 19,076	* 21,465	* 21,465					-15'
																-20'
																-25'

The following notes pertain to this machine equipped with 35.4" wide track pads and 12,600# additional counterweight:

1. Do not attempt to lift or hold any load that exceeds these rated values at their specified load radii and heights.
2. The least stable position is over the side.
3. The operator should be fully acquainted with machine operation before operating the machine.
4. Lifting capacities assume a machine standing on level, firm and uniform supporting surface. Operator must make allowance for job conditions such as soft or uneven ground, out of level conditions, side loads, sudden stopping of loads, hazardous conditions, inexperienced personnel, etc.
5. The above theoretical ratings are based on calculations derived from standard O.E.M. lift charts. They do not exceed 87% of hydraulic lifting capacity or 75% of tipping capacity. Rated loads marked with an asterisk (\*) are limited by hydraulic lifting capacity.
6. Do not boom down with tool on the ground and front fully retracted, doing so may cause damage to machine.