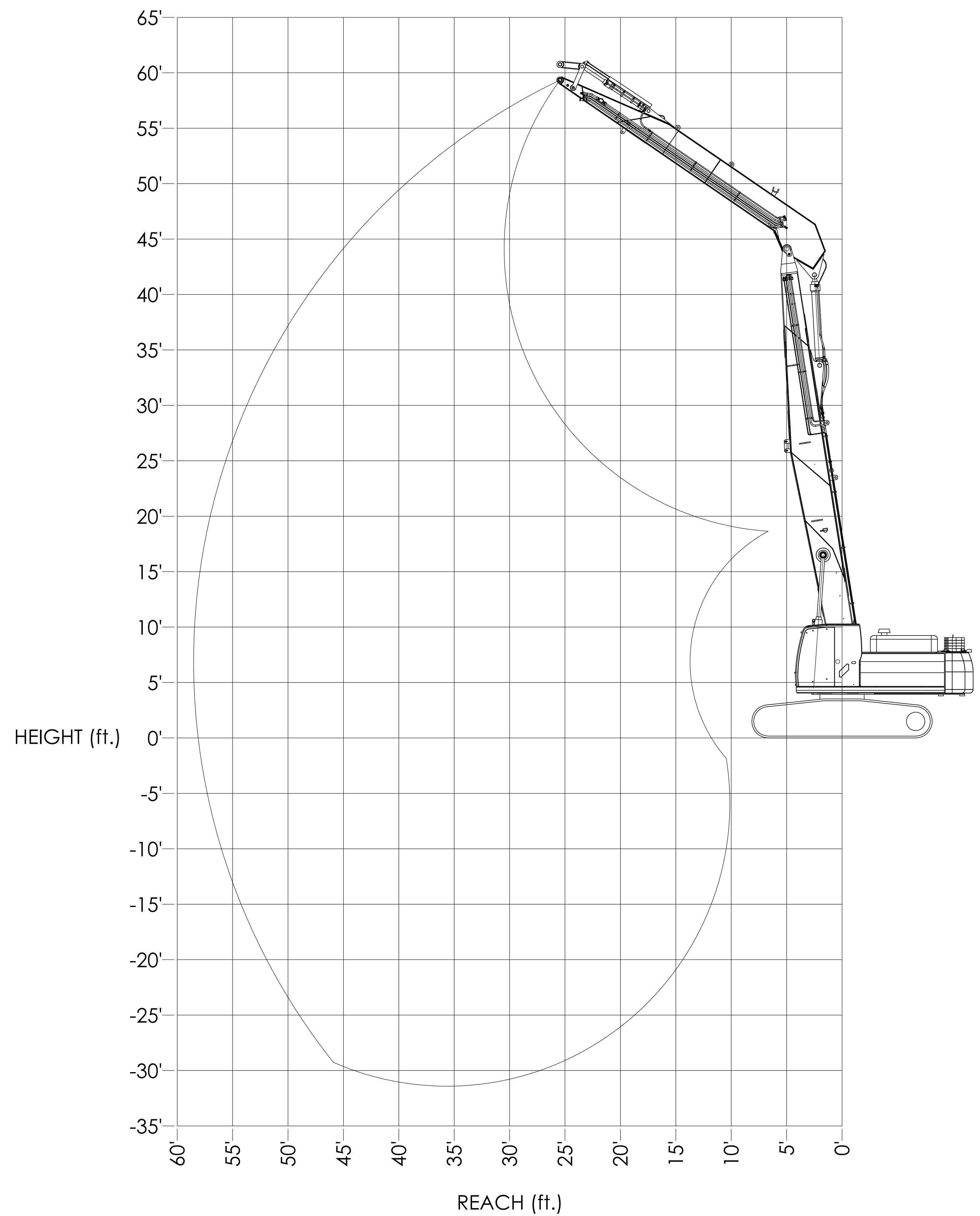
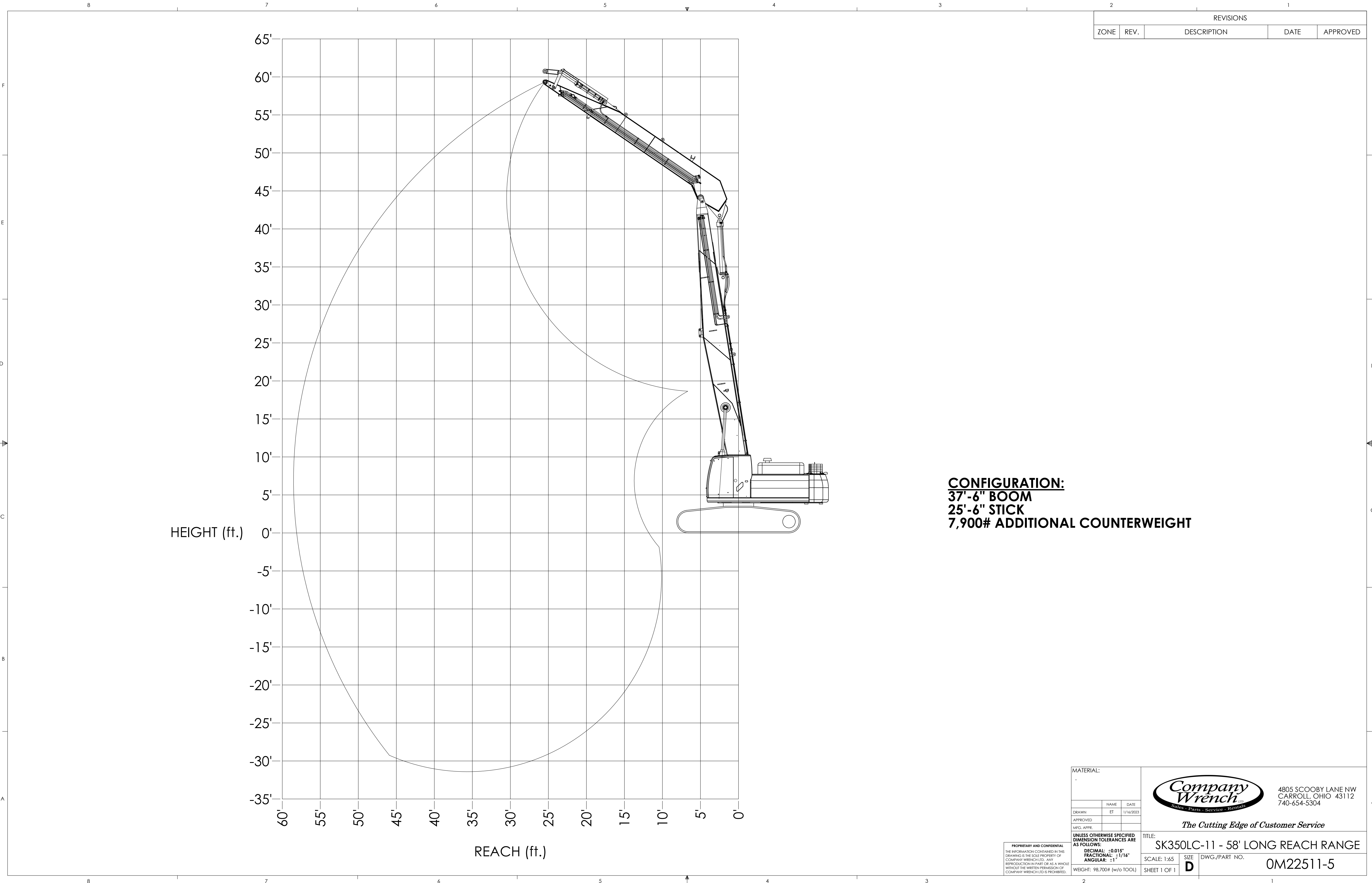


REVISIONS				
ZONE	REV.	DESCRIPTION	DATE	APPROVED



CONFIGURATION:
37'-6" BOOM
25'-6" STICK
7,900# ADDITIONAL COUNTERWEIGHT

MATERIAL:			 4805 SCOOBY LANE NW CARROLL, OHIO 43112 740-654-5304
DRAWN	NAME	DATE	
ET		1/16/2023	
APPROVED			
MEG. APPR.			
UNLESS OTHERWISE SPECIFIED DIMENSION TOLERANCES ARE AS FOLLOWS:			TITLE: SK350LC-11 - 58' LONG REACH RANGE SCALE: 1:65 SIZE: D DWG./PART NO. 0M22511-5 SHEET 1 OF 1
DECIMAL: ±0.015" FRACTIONAL: ±1/16" ANGULAR: ±1°			
WEIGHT: 98,700# (w/O TOOL)			
<small>PROPRIETARY AND CONFIDENTIAL THE INFORMATION CONTAINED IN THIS DRAWING IS THE SOLE PROPERTY OF COMPANY WRENCH LTD. ANY REPRODUCTION IN PART OR AS A WHOLE WITHOUT THE WRITTEN PERMISSION OF COMPANY WRENCH LTD IS PROHIBITED.</small>			



Lifting Capacities

P/N: 0M22511-8



SK350LC-11
2-Piece, Direct Pin
60 Foot
High Reach Excavator

WARNING: DO NOT OPERATE MACHINE OVER SIDE. OPERATE OVER FRONT ONLY WITH DRIVES TO THE REAR OF THE MACHINE.

Lift capacities calculated at attachment pivot point on stick (lbs).

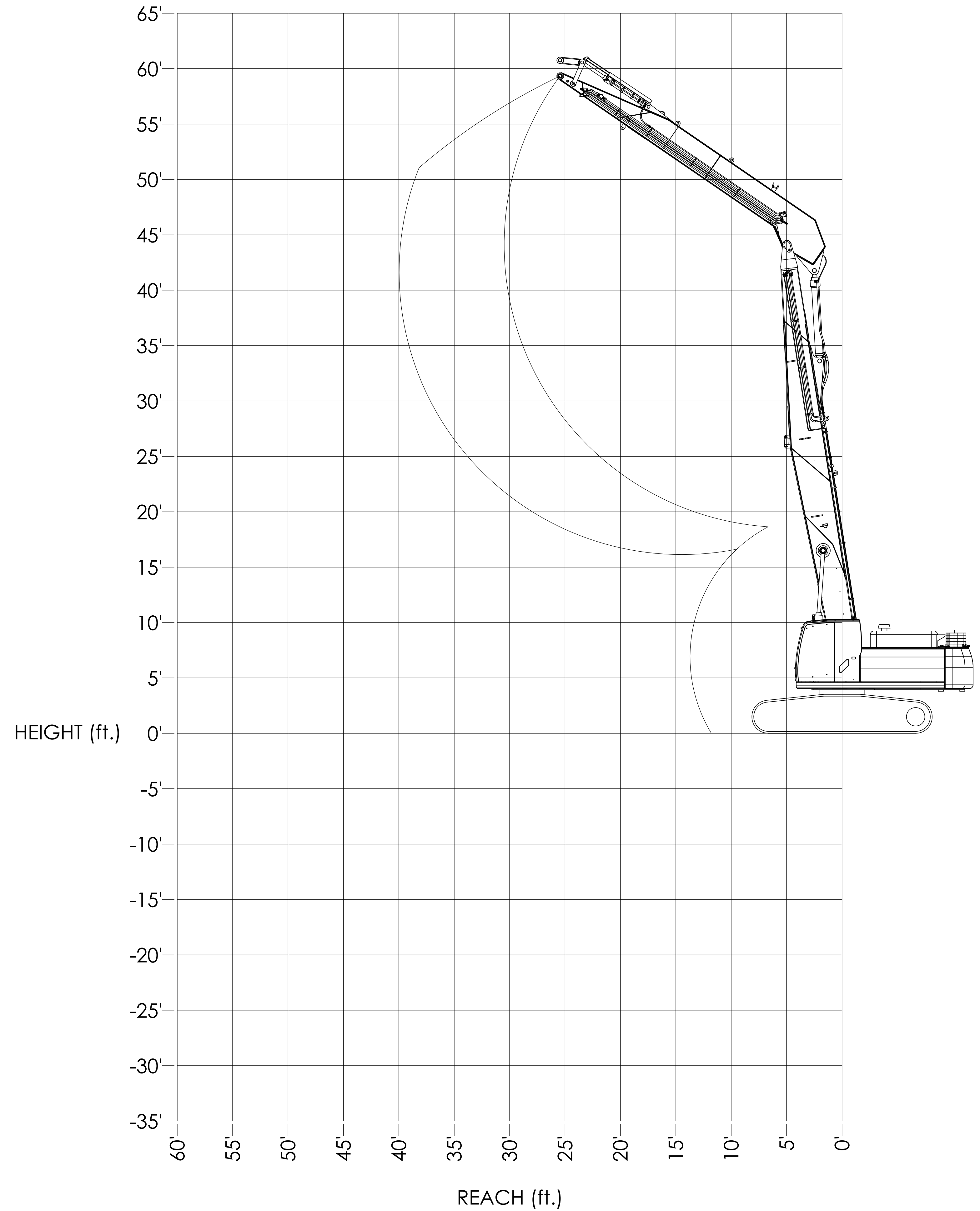
No attachment on stick. Attachment weight must be subtracted.

REACH								HEIGHT
REACH	MAX	35'	30'	25'	20'	15'	10'	
								60'
33'-0"	* 5,553		* 6,634					55'
38'-0"	* 5,636	* 6,597	* 7,442					50'
39'-2"	* 6,628	* 7,304						45'
39'-4"	* 7,332	* 7,665						40'
38'-5"	* 7,951	* 8,045	* 7,902					35'
36'-5"	* 8,667	* 8,670	* 8,469					30'
33'-0"	* 9,810		* 9,736	* 9,340				25'
26'-11"	* 12,776			* 12,957	* 13,292	* 13,253		20'
					* 20,747			15'
					* 21,167			10'
					* 20,780			5'
					* 17,850			0'

The following notes pertain to this machine equipped with 31.5" wide track pads and 7,900# additional counterweight:

1. Do not attempt to lift or hold any load that exceeds these rated values.
2. When working, the boom must be in the fully upright position. Maximum forward tilt of boom is 14°.
3. Machine must never be operated over the side.
4. The operator should be fully acquainted with machine operation before operating the machine.
5. Lifting capacities assume a machine standing on level, firm and uniform supporting surface. Operator must make allowance for job conditions such as soft or uneven ground, out of level conditions, side loads, sudden stopping of loads, hazardous conditions, inexperienced personnel, etc.
6. The above theoretical ratings are based on calculations derived from standard O.E.M. lift charts based on SAE standard No. J1097. They do not exceed 87% of hydraulic lifting capacity or 75% of tipping capacity. Rated loads marked with an asterisk (*) are limited by hydraulic lifting capacity.
7. Do not boom down with tool on the ground and front fully retracted, doing so may cause damage to machine.

REVISIONS				
ZONE	REV.	DESCRIPTION	DATE	APPROVED



CONFIGURATION:
37'-6" BOOM
25'-6" STICK
7,900# ADDITIONAL COUNTERWEIGHT
5,500# TOOL CAPACITY
14° FORWARD BOOM ANGLE FROM FULL UP

MATERIAL:		



PROPRIETARY AND CONFIDENTIAL
 THE INFORMATION CONTAINED IN THIS
 DRAWING IS THE SOLE PROPERTY OF
 COMPANY WRENCH LTD. ANY
 REPRODUCTION IN PART OR AS A WHOLE
 WITHOUT THE WRITTEN PERMISSION OF
 COMPANY WRENCH LTD IS PROHIBITED.

UNLESS OTHERWISE SPECIFIED
 DIMENSION TOLERANCES ARE
 AS FOLLOWS:
 DECIMAL: ±0.015"
 FRACTIONAL: ±1/16"
 ANGULAR: ±1°
 WEIGHT: 98,700# (w/o TOOL)

TITLE: **SK350LC-11 - 60' HIGH REACH RANGE**
 SCALE: 1:65 SIZE: **D** DWG./PART NO. **0M22511-7**
 SHEET 1 OF 1

Lifting Capacities

P/N: 0M22511-6



SK350LC-11
2-Piece, Direct Pin
58 Foot
Long Reach Excavator

Lift capacities calculated at attachment pivot point on stick (lbs).
No attachment on stick. Attachment weight must be subtracted.

REACH																							HEIGHT
MAX		55'		50'		45'		40'		35'		30'		25'		20'		15'		10'			
Reach	Side	Front	Side	Front	Side	Front	Side	Front	Side	Front	Side	Front	Side	Front	Side	Front	Side	Front	Side	Front	Side	Front	
																							60'
33'-0"	* 5,553	* 5,553											* 6,634	* 6,634									55'
39'-5"	* 5,025	* 5,025										* 6,597	* 6,597	* 7,442	* 7,442								50'
44'-4"	* 4,724	* 4,724							* 6,423	* 6,423	* 7,304	* 7,304											45'
48'-2"	* 4,554	* 4,554					* 6,063	* 6,063	* 7,237	* 7,237	* 7,665	* 7,665											40'
51'-3"	* 4,474	* 4,474			* 5,255	* 5,255	* 7,078	* 7,078	* 7,838	* 7,838	* 8,045	* 8,045	* 7,902	* 7,902									35'
53'-9"	* 4,466	* 4,466			6,062	* 6,524	7,877	* 7,915	* 8,526	* 8,526	* 8,670	* 8,670	* 8,469	* 8,469									30'
55'-8"	4,303	* 4,519	4,460	* 5,004	5,835	* 6,961	7,518	* 7,972	* 9,170	* 9,170	* 9,794	* 9,794	* 9,736	* 9,736	* 9,340	* 9,340							25'
57'-0"	3,832	* 4,631	4,281	* 5,983	5,533	* 6,925	7,071	* 7,977	9,028	* 9,231	* 10,797	* 10,797	* 12,455	* 12,455	* 12,957	* 12,957	* 13,292	* 13,292	* 13,253	* 13,253			20'
58'-0"	3,476	* 4,804	4,055	* 5,884	5,185	* 6,859	6,570	* 7,952	8,319	* 9,261	10,604	* 10,906	* 13,079	* 13,079	* 16,123	* 16,123	* 20,747	* 20,747	* 28,679	* 28,679			15'
58'-5"	3,216	* 5,034	3,812	* 5,732	4,821	* 6,744	6,053	* 7,874	7,592	* 9,225	9,567	* 10,927	12,195	* 13,182	15,852	* 16,354	* 21,167	* 21,167	* 13,671	* 13,671			10'
58'-6"	3,042	* 4,757	3,574	* 5,505	4,470	* 6,555	5,558	* 7,713	6,903	* 9,088	8,602	* 10,809	10,809	* 13,073	13,786	* 16,209	18,011	* 20,780	* 7,983	* 7,983			5'
58'-1"	2,948	* 4,464	3,365	* 5,174	4,157	* 6,263	5,120	* 7,438	6,303	* 8,811	7,783	* 10,505	9,691	* 12,687	12,263	* 15,604	16,049	* 17,850	* 8,131	* 8,131			0'
57'-4"	2,935	* 4,135	3,205	* 4,699	3,905	* 5,836	4,765	* 7,016	5,825	* 8,360	7,157	* 9,975	8,892	* 11,988	11,303	* 14,538	15,097	* 17,266	* 9,847	* 9,847			-5'
56'-0"	3,011	* 3,747	3,116	* 4,020	3,734	* 5,228	4,514	* 6,407	5,489	* 7,696	6,735	* 9,185	8,398	* 10,955	10,800	* 13,048	14,769	* 15,297	* 12,172	* 12,172			-10'
54'-3"	3,192	* 3,265			3,661	* 4,377	4,379	* 5,561	5,301	* 6,775	6,509	* 8,100	8,168	* 9,575	10,641	* 11,161	* 12,583	* 12,583	* 12,806	* 12,806			-15'
51'-11"	* 2,640	* 2,640			* 3,187	* 3,187	4,370	* 4,410	5,263	* 5,544	6,467	* 6,680	* 7,824	* 7,824	* 8,876	* 8,876	* 9,487	* 9,487	* 8,651	* 8,651			-20'
49'-0"	* 1,790	* 1,790					* 2,847	* 2,847	* 3,925	* 3,925	* 4,863	* 4,863	* 5,656	* 5,656	* 6,157	* 6,157	* 5,958	* 5,958					-25'
44'-0"	* 929	* 929							* 1,792	* 1,792	* 2,558	* 2,558	* 2,998	* 2,998									-30'
																							-35'

The following notes pertain to this machine equipped with 31.5" wide track pads and 7,900# additional counterweight:

1. Do not attempt to lift or hold any load that exceeds these rated values at their specified load radii and heights.
2. The least stable position is over the side.
3. The operator should be fully acquainted with machine operation before operating the machine.
4. Lifting capacities assume a machine standing on level, firm and uniform supporting surface. Operator must make allowance for job conditions such as soft or uneven ground, out of level conditions, side loads, sudden stopping of loads, hazardous conditions, inexperienced personnel, etc.
5. The above theoretical ratings are based on calculations derived from standard O.E.M. lift charts. They do not exceed 87% of hydraulic lifting capacity or 75% of tipping capacity. Rated loads marked with an asterisk (*) are limited by hydraulic lifting capacity.
6. Do not boom down with tool on the ground and front fully retracted, doing so may cause damage to machine.