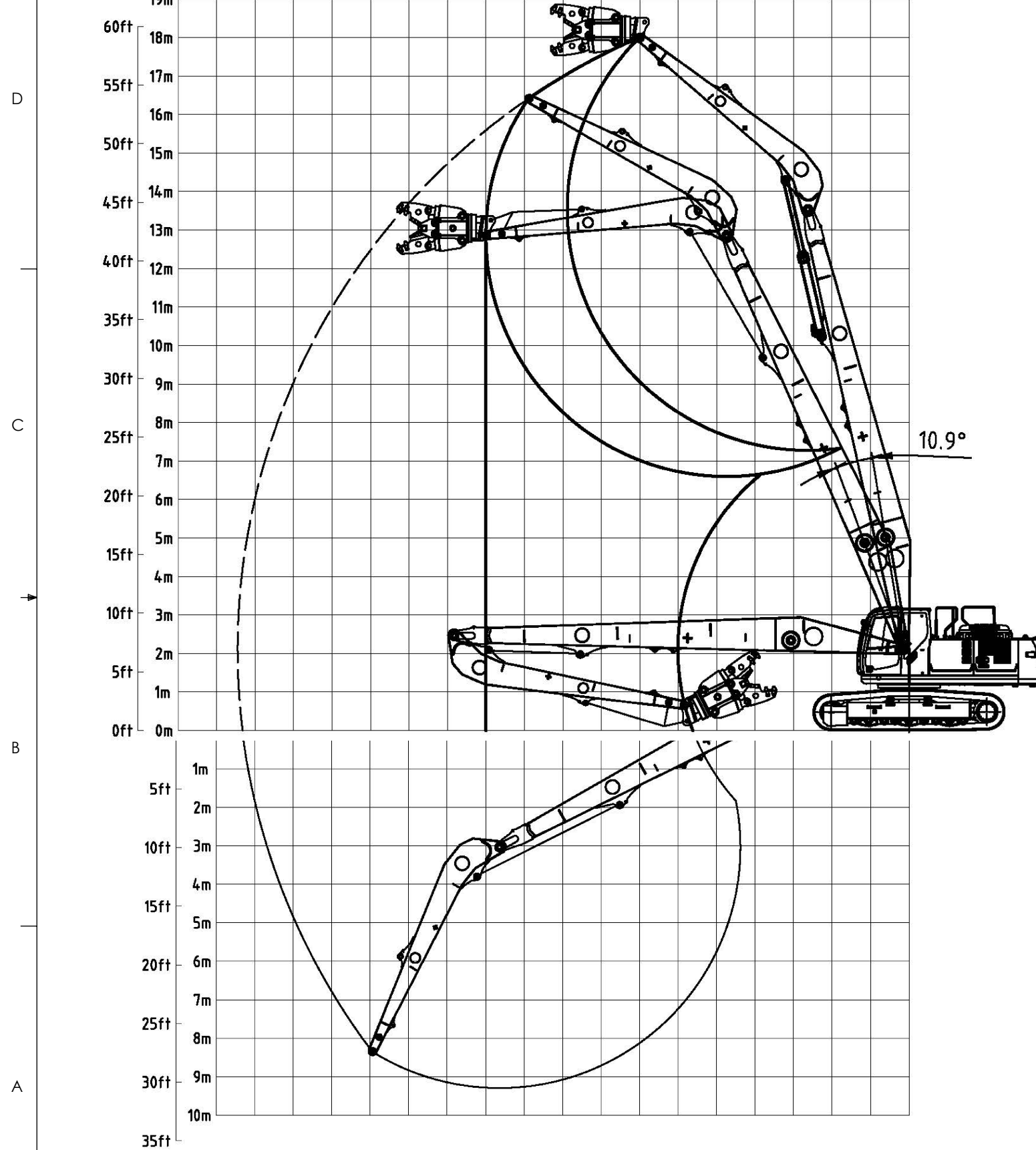


8 7 6 5 4 3 2 1

60ft 55ft 50ft 45ft 40ft 35ft 30ft 25ft 20ft 15ft 10ft 5ft 0ft
 19m 18m 17m 16m 15m 14m 13m 12m 11m 10m 9m 8m 7m 6m 5m 4m 3m 2m 1m 0m



REVISIONS				
ZONE	REV.	DESCRIPTION	DATE	APPROVED

D
C
B
A

D
C
B
A

PROPRIETARY AND CONFIDENTIAL
 THE INFORMATION CONTAINED IN THIS DRAWING IS THE SOLE PROPERTY OF COMPANY WRENCH LTD. ANY REPRODUCTION IN PART OR AS A WHOLE WITHOUT THE WRITTEN PERMISSION OF COMPANY WRENCH LTD IS PROHIBITED.

MATERIAL:		
	NAME	DATE
DRAWN	ET	10/30/2015
APPROVED		
MFG. APPR.		
UNLESS OTHERWISE SPECIFIED DIMENSION TOLERANCES ARE AS FOLLOWS:		
DECIMAL: ±0.015"		
FRACTIONAL: ±1/16"		
ANGULAR: ±1°		
WEIGHT:		



4805 SCOOPY LANE NW
 CARROLL, OHIO 43112
 740-654-5304

The Cutting Edge of Customer Service

TITLE: SK350LC-9 - 60' HIGH REACH RANGE		
SCALE: NTS	SIZE B	DWG./PART NO.
SHEET 1 OF 1		

8 7 6 5 4 3 2 1

WARNING : DO NOT OPERATE MACHINE OVER SIDE. OPERATE OVER FRONT ONLY WITH DRIVES TO THE REAR OF THE MACHINE.

LIFT CAPACITIES CALCULATED AT ATTACHMENT PIVOT POINT ON STICK (lbs)
NO ATTACHMENT ON STICK. ATTACHMENT WEIGHT MUST BE SUBTRACTED.

REACH							HEIGHT
40ft	35ft	30ft	25ft	20ft	15ft	10ft	
							60ft
		12748*					55ft
	12195*	13284*					50ft
	11957*	13073*					45ft
	11934*	13107*					40ft
	12071*	13425*					35ft
		14007*	16046*				30ft
			17257*	21028*	29803*		25ft
					31164*		20ft
				25849*			15ft
				14029*			10ft
				9414*			5ft
				6269*			0ft

THE FOLLOWING NOTES PERTAIN TO THIS MACHINE EQUIPPED WITH 7,920# ADDITIONAL COUNTERWEIGHT.

- DO NOT ATTEMPT TO LIFT OR HOLD ANY LOAD THAT EXCEEDS THESE RATED VALUES.
- WHEN WORKING, THE BOOM MUST BE IN THE FULLY UPRIGHT POSITION. MAXIMUM FORWARD TILT OF THE BOOM IS 11°.
- MACHINE MUST NEVER BE OPERATED OVER THE SIDE.
- THE OPERATOR SHOULD BE FULLY ACQUAINTED WITH MACHINE OPERATION BEFORE OPERATING THE MACHINE.
- LIFTING CAPACITIES ASSUME MACHINE STANDING ON LEVEL, FIRM AND UNIFORM SUPPORTING SURFACE. OPERATOR MUST MAKE ALLOWANCE FOR JOB CONDITIONS SUCH AS SOFT UNEVEN GROUND, OUT OF LEVEL CONDITIONS, SIDE LOADS, SUDDEN STOPPING OF LOADS, HAZARDOUS CONDITIONS, INEXPERIENCED PERSONNEL, AND ECT.
- THE ABOVE THEORETICAL RATINGS ARE BASED ON CALCULATIONS DERIVED FROM STANDARD O.E.M LIFT CHARTS BASED ON SAE STANDARD No J1097. THEY DO NOT EXCEED 87% HYDRAULIC LIFTING CAPACITY OR 75% OF TIPPING CAPACITY. RATED LOADS MARKED WITH A (*) ARE LIMITED HYDRAULICALLY.
- WHEN TRAVELING THE MACHINE IN EITHER FORWARD OR REVERSE DIRECTIONS TO THE JOB SITE (MORE THEN 20ft), WITH THE BOOM STRAIGHT OVER THE FRONT OR REAR OF THE MACHINE, THE BOOM SHOULD BE POSITIONED SUCH THAT THE TIP OF THE TOOL IS APPROX 5ft ABOVE THE GROUND, WITH OUTER ARM AND TOOL PERPENDICULAR TO THE GROUND. TRAVEL CONTROL SHOULD BE SET TO LOW SPEED AND ENGINE RPM AT MID RANGE, AT THE JOB SITE, WITH THE BOOM IN WORKING POSITION (DRIVE SPROCKETS TO THE REAR, BOOM OVER THE FRONT) THE MACHINE MAY BE MOVED UP TO 20ft FORWARD OR REVERSE, TRAVEL AT LOW SPEED SETTING, ENGINE RPM IN MID RANGE, IN ORDER TO MOVE INTO THE WORKING POSITION, PROVIDED THE GROUND IS FIRM AND LEVEL.
- WHEN SWINGING THE MACHINE 360°, THE BOOM SHOULD BE IN THE FULLY UPRIGHT POSITION, WITH THE OUTER ARM AND TOOL PERPENDICULAR TO THE GROUND.
- WHEN SHUTTING DOWN THE MACHINE FOR A PERIOD OF TIME, THE BOOM SHOULD BE LOWERED TO REST THE OUTER ARM ON THE GROUND, WITH THE OUTER ARM AND TOOL POSITIONED PARALLEL TO THE GROUND.
- DO NOT BOOM DOWN WITH TOOL ON THE GROUND AND FRONT FULLY RETRACTED, DOING SO MAY CAUSE DAMAGE TO THE MACHINE.

WARNING : DO NOT OPERATE MACHINE OVER SIDE. OPERATE OVER FRONT ONLY WITH DRIVES TO THE REAR OF THE MACHINE.

LIFT CAPACITIES CALCULATED AT ATTACHMENT PIVOT POINT ON STICK (lbs)
NO ATTACHMENT ON STICK. ATTACHMENT WEIGHT MUST BE SUBTRACTED.

REACH						HEIGHT
MAX	50ft	40ft	30ft	20ft	10ft	
7400*	9289*	12297*	17002*	6225*		0ft
6684*	8287*	11375*	15405*	11019*		-10ft
5504*		9135*	12171*	14360*		-20ft
4915*						-30ft

THE FOLLOWING NOTES PERTAIN TO THIS MACHINE EQUIPPED WITH 7,920# ADDITIONAL COUNTERWEIGHT.

1. DO NOT ATTEMPT TO LIFT OR HOLD ANY LOAD THAT EXCEEDS THESE RATED VALUES.
2. WHEN WORKING, THE BOOM MUST BE IN THE FULLY UPRIGHT POSITION. MAXIMUM FORWARD TILT OF THE BOOM IS 11°.
3. MACHINE MUST NEVER BE OPERATED OVER THE SIDE.
4. THE OPERATOR SHOULD BE FULLY ACQUAINTED WITH MACHINE OPERATION BEFORE OPERATING THE MACHINE.
5. LIFTING CAPACITIES ASSUME MACHINE STANDING ON LEVEL, FIRM AND UNIFORM SUPPORTING SURFACE. OPERATOR MUST MAKE ALLOWANCE FOR JOB CONDITIONS SUCH AS SOFT UNEVEN GROUND, OUT OF LEVEL CONDITIONS, SIDE LOADS, SUDDEN STOPPING OF LOADS, HAZARDOUS CONDITIONS, INEXPERIENCED PERSONNEL, AND ECT.
6. THE ABOVE THEORETICAL RATINGS ARE BASED ON CALCULATIONS DERIVED FROM STANDARD O.E.M LIFT CHARTS BASED ON SAE STANDARD No J1097. THEY DO NOT EXCEED 87% HYDRAULIC LIFTING CAPACITY OR 75% OF TIPPING CAPACITY. RATED LOADS MARKED WITH A (*) ARE LIMITED HYDRAULICALLY.
7. WHEN TRAVELING THE MACHINE IN EITHER FORWARD OR REVERSE DIRECTIONS TO THE JOB SITE (MORE THEN 20ft), WITH THE BOOM STRAIGHT OVER THE FRONT OR REAR OF THE MACHINE, THE BOOM SHOULD BE POSITIONED SUCH THAT THE TIP OF THE TOOL IS APPROX 5ft ABOVE THE GROUND, WITH OUTER ARM AND TOOL PERPENDICULAR TO THE GROUND. TRAVEL CONTROL SHOULD BE SET TO LOW SPEED AND ENGINE RPM AT MID RANGE, AT THE JOB SITE, WITH THE BOOM IN WORKING POSITION (DRIVE SPROCKETS TO THE REAR, BOOM OVER THE FRONT) THE MACHINE MAY BE MOVED UP TO 20ft FORWARD OR REVERSE, TRAVEL AT LOW SPEED SETTING, ENGINE RPM IN MID RANGE, IN ORDER TO MOVE INTO THE WORKING POSITION, PROVIDED THE GROUND IS FIRM AND LEVEL.
8. WHEN SWINGING THE MACHINE 360°, THE BOOM SHOULD BE IN THE FULLY UPRIGHT POSITION, WITH THE OUTER ARM AND TOOL PERPENDICULAR TO THE GROUND.
9. WHEN SHUTTING DOWN THE MACHINE FOR A PERIOD OF TIME, THE BOOM SHOULD BE LOWERED TO REST THE OUTER ARM ON THE GROUND, WITH THE OUTER ARM AND TOOL POSITIONED PARALLEL TO THE GROUND.
10. DO NOT BOOM DOWN WITH TOOL ON THE GROUND AND FRONT FULLY RETRACTED, DOING SO MAY CAUSE DAMAGE TO THE MACHINE.