

NOTES:

1. MAXIMUM TOOL WEIGHT (INCLUDING HEAD AND/OR HITCH) = 4000kg (8818 lb)
2. FORWARD EQUIPMENT CONFIGURATION:
 -BASE BOOM
 -8.5m (28ft) DEMO BOOM
 -2.4m (8ft) MID DIPPER
 -7.0m (23ft) DEMO DIPPER
3. BASE MACHINE SHOWN FOR REFERENCE ONLY. OPTIONS FITTED MAY NOT BE AS ILLUSTRATED AND CAB POSITION MAY NOT BE EXACT.
4. ATTACHMENT SHOWN FOR REFERENCE ONLY.
5. WORKING RANGE BASED ON 10.0° BOOM FORWARD ANGLE.

REVISIONS				
ZONE	REV.	DESCRIPTION	DATE	APPROVED

MATERIAL:		
	NAME	DATE
DRAWN	ET	10/23/2014
APPROVED		
MFG. APPR.		



4805 SCOOPY LANE NW
 CARROLL, OHIO 43112
 740-654-5304

The Cutting Edge of Customer Service

PROPRIETARY AND CONFIDENTIAL
 THE INFORMATION CONTAINED IN THIS DRAWING IS THE SOLE PROPERTY OF COMPANY WRENCH LTD. ANY REPRODUCTION IN PART OR AS A WHOLE WITHOUT THE WRITTEN PERMISSION OF COMPANY WRENCH LTD IS PROHIBITED.

UNLESS OTHERWISE SPECIFIED DIMENSION TOLERANCES ARE AS FOLLOWS:
 DECIMAL: ±0.015"
 FRACTIONAL: ±1/16"
 ANGULAR: ±1°

WEIGHT:

TITLE: SK500LC-9 - 79' HIGH REACH RANGE		
SCALE: NTS	SIZE B	DWG./PART NO.
SHEET 1 OF 1		

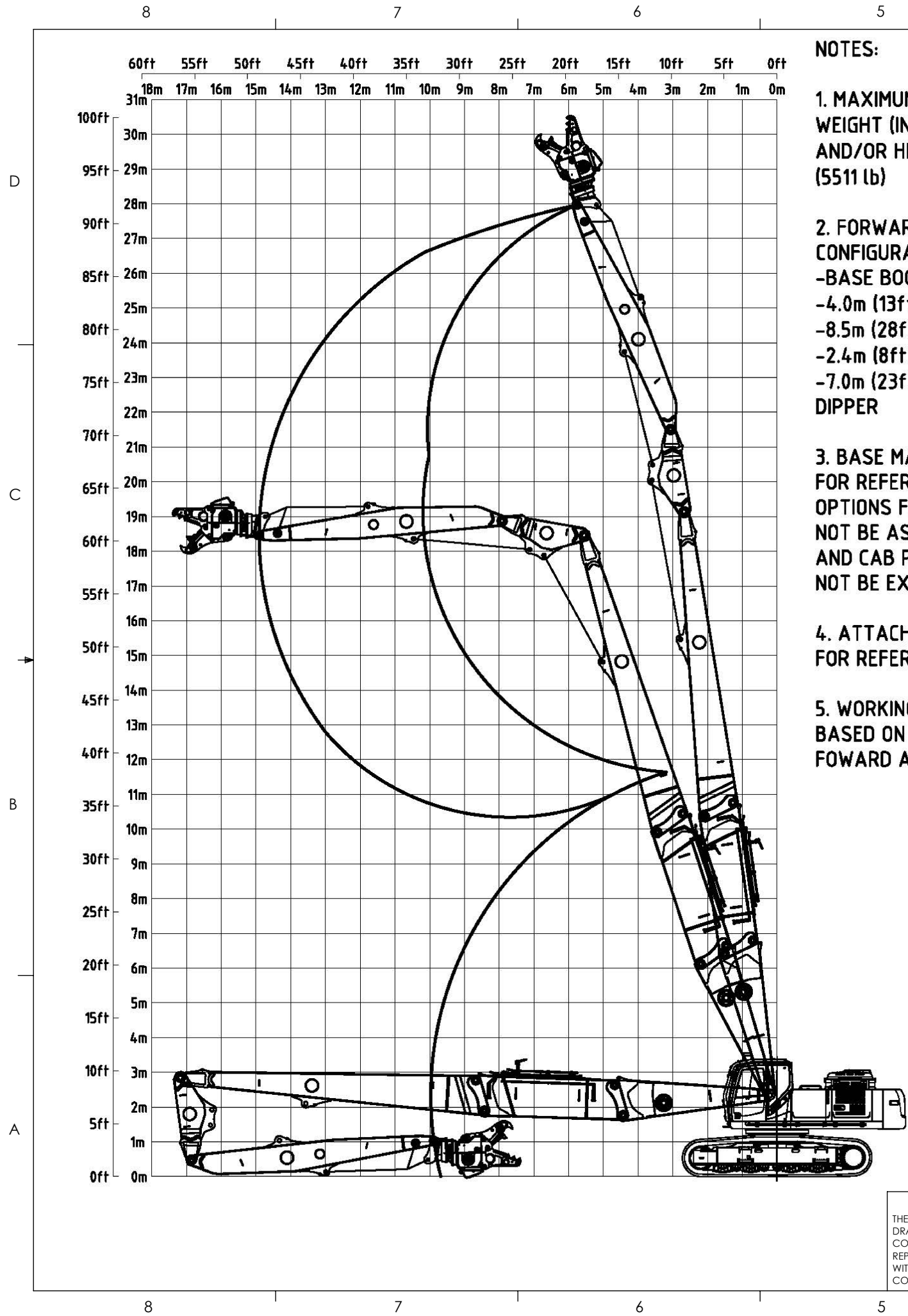
WARNING : DO NOT OPERATE MACHINE OVER SIDE. OPERATE OVER FRONT ONLY WITH DRIVES TO THE REAR OF THE MACHINE.

LIFT CAPACITIES CALCULATED AT ATTACHMENT PIVOT POINT ON STICK (lbs)
NO ATTACHMENT ON STICK. ATTACHMENT WEIGHT MUST BE SUBTRACTED.

REACH								HEIGHT
45ft	40ft	35ft	30ft	25ft	20ft	15ft		
				28166*			75ft	
		19454*	22380*				70ft	
	16666*	18903*	18929*				65ft	
	16061*	19290*					60ft	
	15823*	18310*					55ft	
14241*	15643*	18746*					50ft	
14255*	15669*	18944*					45ft	
	15835*	19015*	21852*				40ft	
	16158*	19235*	22257*				35ft	
		19099*	22746*	27280*			30ft	
			22913*	28128*	36084*	49146*	25ft	
					38630*		20ft	
					24111*		15ft	
					18070*		10ft	
					17070*		5ft	
					17962*		0ft	

THE FOLLOWING NOTES PERTAIN TO THIS MACHINE EQUIPPED WITH 12,600# ADDITIONAL COUNTERWEIGHT.

- DO NOT ATTEMPT TO LIFT OR HOLD ANY LOAD THAT EXCEEDS THESE RATED VALUES.
- WHEN WORKING, THE BOOM MUST BE IN THE FULLY UPRIGHT POSITION. MAXIMUM FORWARD TILT OF THE BOOM IS 11°.
- MACHINE MUST NEVER BE OPERATED OVER THE SIDE.
- THE OPERATOR SHOULD BE FULLY ACQUAINTED WITH MACHINE OPERATION BEFORE OPERATING THE MACHINE.
- LIFTING CAPACITIES ASSUME MACHINE STANDING ON LEVEL, FIRM AND UNIFORM SUPPORTING SURFACE. OPERATOR MUST MAKE ALLOWANCE FOR JOB CONDITIONS SUCH AS SOFT UNEVEN GROUND, OUT OF LEVEL CONDITIONS, SIDE LOADS, SUDDEN STOPPING OF LOADS, HAZARDOUS CONDITIONS, INEXPERIENCED PERSONNEL, AND ECT.
- THE ABOVE THEORETICAL RATINGS ARE BASED ON CALCULATIONS DERIVED FROM STANDARD O.E.M LIFT CHARTS BASED ON SAE STANDARD No J1097. THEY DO NOT EXCEED 87% HYDRAULIC LIFTING CAPACITY OR 75% OF TIPPING CAPACITY. RATED LOADS MARKED WITH A (*) ARE LIMITED HYDRAULICALLY.
- WHEN TRAVELING THE MACHINE IN EITHER FORWARD OR REVERSE DIRECTIONS TO THE JOB SITE (MORE THEN 20ft), WITH THE BOOM STRAIGHT OVER THE FRONT OR REAR OF THE MACHINE, THE BOOM SHOULD BE POSITIONED SUCH THAT THE TIP OF THE TOOL IS APPROX 5ft ABOVE THE GROUND, WITH OUTER ARM AND TOOL PERPENDICULAR TO THE GROUND. TRAVEL CONTROL SHOULD BE SET TO LOW SPEED AND ENGINE RPM AT MID RANGE, AT THE JOB SITE, WITH THE BOOM IN WORKING POSITION (DRIVE SPROCKETS TO THE REAR, BOOM OVER THE FRONT) THE MACHINE MAY BE MOVED UP TO 20ft FORWARD OR REVERSE, TRAVEL AT LOW SPEED SETTING, ENGINE RPM IN MID RANGE, IN ORDER TO MOVE INTO THE WORKING POSITION, PROVIDED THE GROUND IS FIRM AND LEVEL.
- WHEN SWINGING THE MACHINE 360°, THE BOOM SHOULD BE IN THE FULLY UPRIGHT POSITION, WITH THE OUTER ARM AND TOOL PERPENDICULAR TO THE GROUND.
- WHEN SHUTTING DOWN THE MACHINE FOR A PERIOD OF TIME, THE BOOM SHOULD BE LOWERED TO REST THE OUTER ARM ON THE GROUND, WITH THE OUTER ARM AND TOOL POSITIONED PARALLEL TO THE GROUND.
- DO NOT BOOM DOWN WITH TOOL ON THE GROUND AND FRONT FULLY RETRACTED, DOING SO MAY CAUSE DAMAGE TO THE MACHINE.



NOTES:

1. MAXIMUM TOOL WEIGHT (INCLUDING HEAD AND/OR HITCH) = 2500kg (5511 lb)
2. FORWARD EQUIPMENT CONFIGURATION:
 -BASE BOOM
 -4.0m (13ft) BOOM EXT.
 -8.5m (28ft) DEMO BOOM
 -2.4m (8ft) MID DIPPER
 -7.0m (23ft) DEMO DIPPER
3. BASE MACHINE SHOWN FOR REFERENCE ONLY. OPTIONS FITTED MAY NOT BE AS ILLUSTRATED AND CAB POSITION MAY NOT BE EXACT.
4. ATTACHMENT SHOWN FOR REFERENCE ONLY.
5. WORKING RANGE BASED ON 10.0° BOOM FORWARD ANGLE.

REVISIONS				
ZONE	REV.	DESCRIPTION	DATE	APPROVED

MATERIAL:		
	NAME	DATE
DRAWN	ET	10/23/2014
APPROVED		
MFG. APPR.		
UNLESS OTHERWISE SPECIFIED DIMENSION TOLERANCES ARE AS FOLLOWS:		
DECIMAL: ±0.015"		
FRACTIONAL: ±1/16"		
ANGULAR: ±1°		
WEIGHT:		



4805 SCOOPY LANE NW
 CARROLL, OHIO 43112
 740-654-5304

The Cutting Edge of Customer Service

TITLE: SK500LC-9 - 92' HIGH REACH RANGE		
SCALE: NTS	SIZE B	DWG./PART NO.
SHEET 1 OF 1		

PROPRIETARY AND CONFIDENTIAL
 THE INFORMATION CONTAINED IN THIS DRAWING IS THE SOLE PROPERTY OF COMPANY WRENCH LTD. ANY REPRODUCTION IN PART OR AS A WHOLE WITHOUT THE WRITTEN PERMISSION OF COMPANY WRENCH LTD IS PROHIBITED.

WARNING : DO NOT OPERATE MACHINE OVER SIDE. OPERATE OVER FRONT ONLY WITH DRIVES TO THE REAR OF THE MACHINE.

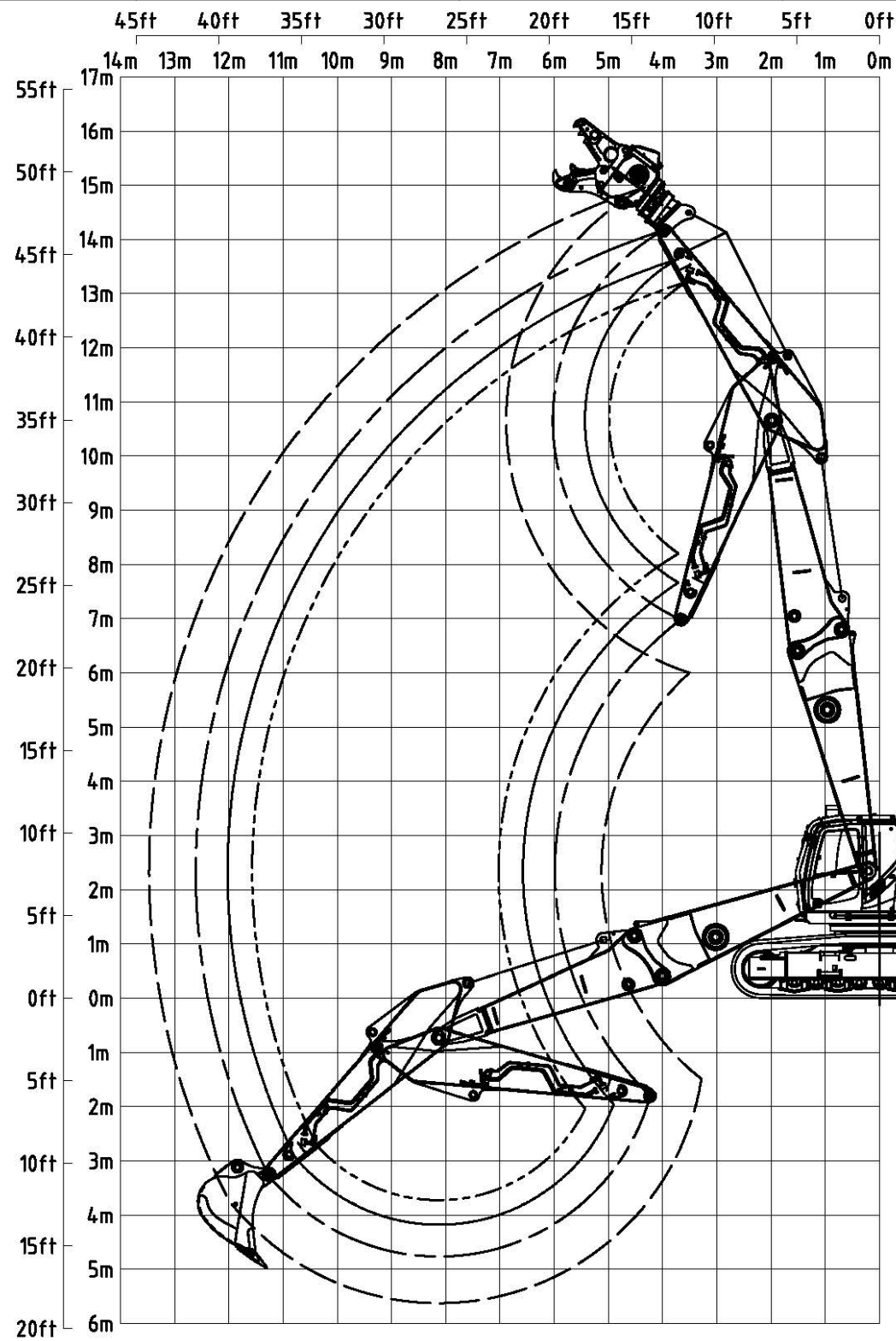
LIFT CAPACITIES CALCULATED AT ATTACHMENT PIVOT POINT ON STICK (lbs)

NO ATTACHMENT ON STICK. ATTACHMENT WEIGHT MUST BE SUBTRACTED.

REACH								HEIGHT
45ft	40ft	35ft	30ft	25ft	20ft	15ft		
				25709*			90ft	
		17099*	20806*				85ft	
	14441*	18157*					80ft	
12097*	14969*	18167*					75ft	
12255*	14464*	17246*					70ft	
12063*	14478*	17145*					65ft	
12096*	14340*	16953*					60ft	
12074*	14175*	16767*					55ft	
11987*	14001*	16592*	20036*				50ft	
12006*	15007*	16421*	19835*				45ft	
	15085*	16286*	19636*	24486*	31790*		40ft	
			19737*	24510*	31748*		35ft	
				23606*			30ft	
			18246*				25ft	
		14440*					20ft	
		13420*					15ft	
		12042*					10ft	
		10392*					5ft	
		8649*					0ft	

THE FOLLOWING NOTES PERTAIN TO THIS MACHINE EQUIPPED WITH 12,600# ADDITIONAL COUNTERWEIGHT.

- DO NOT ATTEMPT TO LIFT OR HOLD ANY LOAD THAT EXCEEDS THESE RATED VALUES.
- WHEN WORKING, THE BOOM MUST BE IN THE FULLY UPRIGHT POSITION. MAXIMUM FORWARD TILT OF THE BOOM IS 11°.
- MACHINE MUST NEVER BE OPERATED OVER THE SIDE.
- THE OPERATOR SHOULD BE FULLY ACQUAINTED WITH MACHINE OPERATION BEFORE OPERATING THE MACHINE.
- LIFTING CAPACITIES ASSUME MACHINE STANDING ON LEVEL, FIRM AND UNIFORM SUPPORTING SURFACE. OPERATOR MUST MAKE ALLOWANCE FOR JOB CONDITIONS SUCH AS SOFT UNEVEN GROUND, OUT OF LEVEL CONDITIONS, SIDE LOADS, SUDDEN STOPPING OF LOADS, HAZARDOUS CONDITIONS, INEXPERIENCED PERSONNEL, AND ECT.
- THE ABOVE THEORETICAL RATINGS ARE BASED ON CALCULATIONS DERIVED FROM STANDARD O.E.M LIFT CHARTS BASED ON SAE STANDARD No J1097. THEY DO NOT EXCEED 87% HYDRAULIC LIFTING CAPACITY OR 75% OF TIPPING CAPACITY. RATED LOADS MARKED WITH A (*) ARE LIMITED HYDRAULICALLY.
- WHEN TRAVELING THE MACHINE IN EITHER FORWARD OR REVERSE DIRECTIONS TO THE JOB SITE (MORE THEN 20ft), WITH THE BOOM STRAIGHT OVER THE FRONT OR REAR OF THE MACHINE, THE BOOM SHOULD BE POSITIONED SUCH THAT THE TIP OF THE TOOL IS APPROX 5ft ABOVE THE GROUND, WITH OUTER ARM AND TOOL PERPENDICULAR TO THE GROUND. TRAVEL CONTROL SHOULD BE SET TO LOW SPEED AND ENGINE RPM AT MID RANGE, AT THE JOB SITE, WITH THE BOOM IN WORKING POSITION (DRIVE SPROCKETS TO THE REAR, BOOM OVER THE FRONT) THE MACHINE MAY BE MOVED UP TO 20ft FORWARD OR REVERSE, TRAVEL AT LOW SPEED SETTING, ENGINE RPM IN MID RANGE, IN ORDER TO MOVE INTO THE WORKING POSITION, PROVIDED THE GROUND IS FIRM AND LEVEL.
- WHEN SWINGING THE MACHINE 360°, THE BOOM SHOULD BE IN THE FULLY UPRIGHT POSITION, WITH THE OUTER ARM AND TOOL PERPENDICULAR TO THE GROUND.
- WHEN SHUTTING DOWN THE MACHINE FOR A PERIOD OF TIME, THE BOOM SHOULD BE LOWERED TO REST THE OUTER ARM ON THE GROUND, WITH THE OUTER ARM AND TOOL POSITIONED PARALLEL TO THE GROUND.
- DO NOT BOOM DOWN WITH TOOL ON THE GROUND AND FRONT FULLY RETRACTED, DOING SO MAY CAUSE DAMAGE TO THE MACHINE.



DIPPER LENGTH KEY:
 3.00m (9'10")
 3.45m (11'4")
 4.04m (13'3")
 4.90m (16'1")

REVISIONS				
ZONE	REV.	DESCRIPTION	DATE	APPROVED

NOTES:

1. ATTACHMENT ILLUSTRATED IS SHOWN AS AN EXAMPLE ONLY. FULL SWEEP MAY NOT BE POSSIBLE WITH HEAVY ATTACHMENTS.
2. BASE MACHINE SHOWN FOR REFERENCE ONLY.
3. ALL DIPPER LENGTHS BASED ON OEM SUPPLY.

PROPRIETARY AND CONFIDENTIAL
 THE INFORMATION CONTAINED IN THIS DRAWING IS THE SOLE PROPERTY OF COMPANY WRENCH LTD. ANY REPRODUCTION IN PART OR AS A WHOLE WITHOUT THE WRITTEN PERMISSION OF COMPANY WRENCH LTD IS PROHIBITED.

MATERIAL:		
	NAME	DATE
DRAWN	ET	10/23/2014
APPROVED		
MFG. APPR.		

UNLESS OTHERWISE SPECIFIED DIMENSION TOLERANCES ARE AS FOLLOWS:

DECIMAL: ±0.015"
FRACTIONAL: ±1/16"
ANGULAR: ±1°

WEIGHT:



4805 SCOOPY LANE NW
 CARROLL, OHIO 43112
 740-654-5304

The Cutting Edge of Customer Service

TITLE:
SK500LC-9 - EXC. TIP DEMO. RANGE

SCALE: NTS	SIZE B	DWG./PART NO.
SHEET 1 OF 1		

RATED LIFTING CAPACITIES

MACHINE : KOBELCO SK500LC-9
EQUIPMENT : STANDARD EQUIPMENT

MACHINE CONFIGURATION:

- STANDARD EQUIPMENT IN STRAIGHT POSITION
- 12,600# ADDITION COUNTER WEIGHT
- 11'4" (3.45m) DIPPER
- UPRATED HOIST CYLINDER (190mm BORE, 130mm ROD)

WARNING : DO NOT OPERATE MACHINE OVER SIDE. OPERATE OVER FRONT ONLY WITH DRIVES TO THE REAR OF THE MACHINE.

LIFT CAPACITIES CALCULATED AT ATTACHMENT PIVOT POINT ON STICK (lbs)
NO ATTACHMENT ON STICK. ATTACHMENT WEIGHT MUST BE SUBTRACTED.

REACH								
40ft	35ft	30ft	25ft	20ft	15ft	10ft		
				34861*			40 ft	P I V O T I N G H E I G H T
			31367*	29640*			35 ft	
		30014*	29657*	26613*			30ft	
	25224*	30875*	30490*	27759*	25011*		25ft	
	25980	31483*	37140*	45238*			20ft	
	25489	32148*	38729*				15ft	
	24959	31353	39587*				10ft	
	24548	30587	39019*				5ft	
	24293	30141	36707*				0ft	
	21103*	26962*	32598*	37566*			-5ft	
		21923*	26524*	29620*			-10ft	
							-15ft	

THE FOLLOWING NOTES PERTAIN TO THIS MACHINE EQUIPPED WITH 12,600# ADDITIONAL COUNTERWEIGHT.

1. DO NOT ATTEMPT TO LIFT OR HOLD ANY LOAD THAT EXCEEDS THESE RATED VALUES.
2. MACHINE MUST NEVER BE OPERATED OVER THE SIDE.
3. THE OPERATOR SHOULD BE FULLY ACQUAINTED WITH MACHINE OPERATION BEFORE OPERATING THE MACHINE.
4. LIFTING CAPACITIES ASSUME MACHINE STANDING ON LEVEL, FIRM AND UNIFORM SUPPORTING SURFACE. OPERATOR MUST MAKE ALLOWANCE FOR JOB CONDITIONS SUCH AS SOFT UNEVEN GROUND, OUT OF LEVEL CONDITIONS, SIDE LOADS, SUDDEN STOPPING OF LOADS, HAZARDOUS CONDITIONS, INEXPERIENCED PERSONNEL, AND ECT.
5. THE ABOVE THEORETICAL RATINGS ARE BASED ON CALCULATIONS DERIVED FROM STANDARD O.E.M LIFT CHARTS BASED ON SAE STANDARD No J1097. THEY DO NOT EXCEED 87% HYDRAULIC LIFTING CAPACITY OR 75% OF TIPPING CAPACITY. RATED LOADS MARKED WITH A (*) ARE LIMITED HYDRAULICALLY.
6. HYDRAULIC LIMITS CALCULATED USING 34.3 Mpa (4975 psi).

RATED LIFTING CAPACITIES

MACHINE : KOBELCO SK500LC-9
EQUIPMENT : STANDARD EQUIPMENT

MACHINE CONFIGURATION:

- STANDARD EQUIPMENT IN STRAIGHT POSITION
- 12,600# ADDITION COUNTER WEIGHT
- 13'3" (4.04m) DIPPER
- UPRATED HOIST CYLINDER (190mm BORE, 130mm ROD)

WARNING : DO NOT OPERATE MACHINE OVER SIDE. OPERATE OVER FRONT ONLY WITH DRIVES TO THE REAR OF THE MACHINE.

LIFT CAPACITIES CALCULATED AT ATTACHMENT PIVOT POINT ON STICK (lbs)
NO ATTACHMENT ON STICK. ATTACHMENT WEIGHT MUST BE SUBTRACTED.

REACH							40ft	35ft	30ft	25ft	20ft	15ft	10ft
40ft	35ft	30ft	25ft	20ft	15ft	10ft							
			25097*	27811*									
		23243*	25386*	23530*									40ft
		25047*	23785*	21094*									35ft
	24355*	25719*	24252*	21507*									30ft
	25883	28547*	28974*	30119*									25ft
20331	25302	31174*	37469*	47439*									20ft
20071	24686	31203	38766*	47953*									15ft
19842	24155	30313	38815*	29625*									10ft
19187*	23814	29732	37220*	31752*									5ft
	22300*	27803*	33858*	40448*	16217*								0ft
	17576*	23427*	28594*	33162*									-5ft
		16456*	21019*										-10ft
													-15ft
													-20ft

THE FOLLOWING NOTES PERTAIN TO THIS MACHINE EQUIPPED WITH 12,600# ADDITIONAL COUNTERWEIGHT.

1. DO NOT ATTEMPT TO LIFT OR HOLD ANY LOAD THAT EXCEEDS THESE RATED VALUES.
2. MACHINE MUST NEVER BE OPERATED OVER THE SIDE.
3. THE OPERATOR SHOULD BE FULLY ACQUAINTED WITH MACHINE OPERATION BEFORE OPERATING THE MACHINE.
4. LIFTING CAPACITIES ASSUME MACHINE STANDING ON LEVEL, FIRM AND UNIFORM SUPPORTING SURFACE. OPERATOR MUST MAKE ALLOWANCE FOR JOB CONDITIONS SUCH AS SOFT UNEVEN GROUND, OUT OF LEVEL CONDITIONS, SIDE LOADS, SUDDEN STOPPING OF LOADS, HAZARDOUS CONDITIONS, INEXPERIENCED PERSONNEL, AND ECT.
5. THE ABOVE THEORETICAL RATINGS ARE BASED ON CALCULATIONS DERIVED FROM STANDARD O.E.M LIFT CHARTS BASED ON SAE STANDARD No J1097. THEY DO NOT EXCEED 87% HYDRAULIC LIFTING CAPACITY OR 75% OF TIPPING CAPACITY. RATED LOADS MARKED WITH A (*) ARE LIMITED HYDRAULICALLY.
6. HYDRAULIC LIMITS CALCULATED USING 34.3 Mpa (4975 psi).

RATED LIFTING CAPACITIES

MACHINE : KOBELCO SK500LC-9
EQUIPMENT : STANDARD EQUIPMENT

MACHINE CONFIGURATION:

- STANDARD EQUIPMENT IN STRAIGHT POSITION
- 12,600# ADDITION COUNTER WEIGHT
- 16'1" (4.9m) DIPPER
- UPRATED HOIST CYLINDER (190mm BORE, 130mm ROD)

WARNING : DO NOT OPERATE MACHINE OVER SIDE. OPERATE OVER FRONT ONLY WITH DRIVES TO THE REAR OF THE MACHINE.

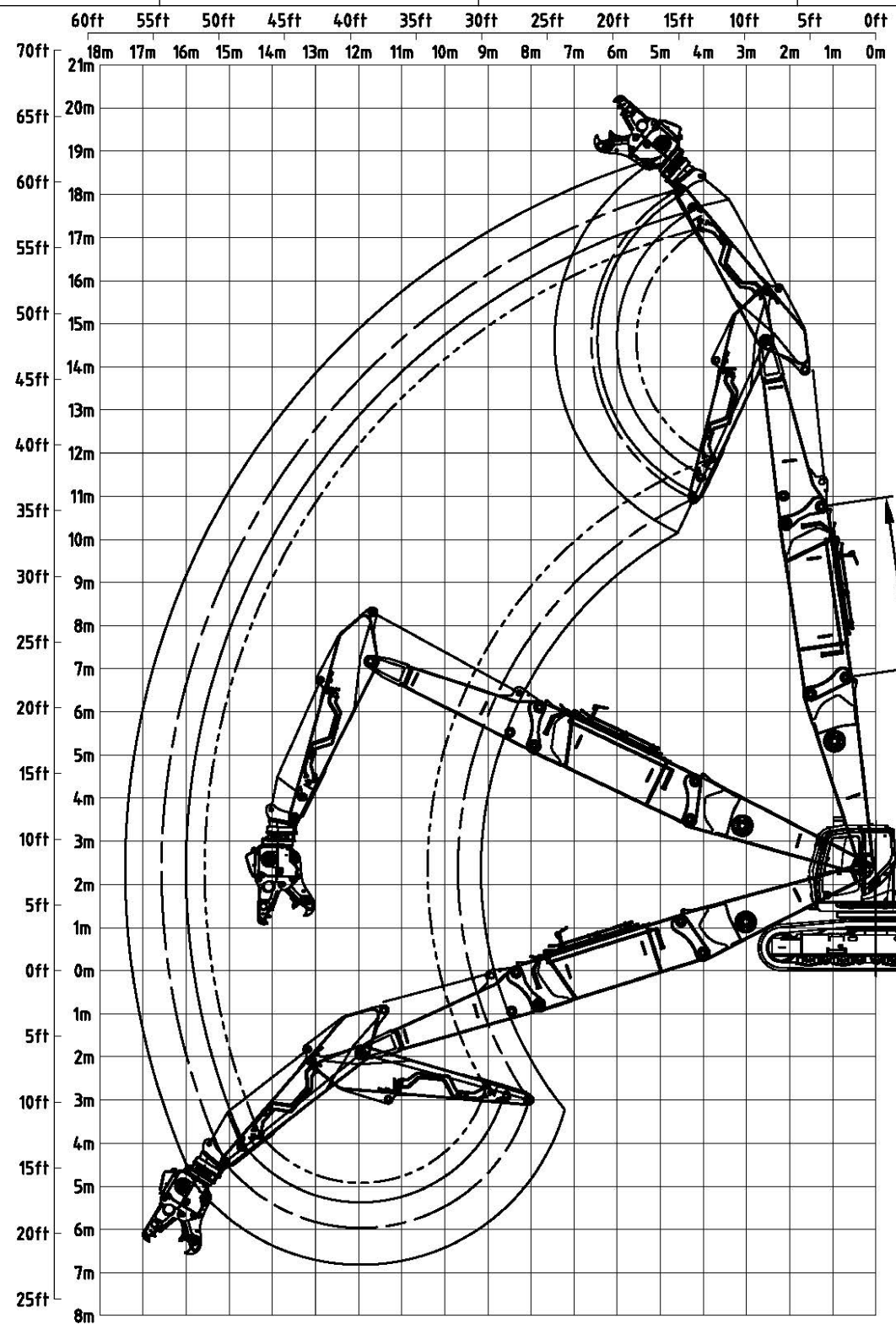
LIFT CAPACITIES CALCULATED AT ATTACHMENT PIVOT POINT ON STICK (lbs)
NO ATTACHMENT ON STICK. ATTACHMENT WEIGHT MUST BE SUBTRACTED.

REACH								
45ft	40ft	35ft	30ft	25ft	20ft	15ft		
							50ft	
					17684*		45ft	
				17765*			40ft	
			16982*	19446*			35ft	
		15164*	19417*	20537*			30ft	
	8581*	18709*	21785*	22915*			25ft	
	14655*	21854*	25709*	28671*	31423*	34303*	20ft	
	18022*	25779	30384*	36179*	45227*		15ft	
	20318	25061	31347*	38057*	48684*		10ft	
	19957	24414	30737	38922*	49950*		5ft	
	19707	25478	29967	38323*	48392*		0ft	
	18823*	23671	29426*	35977*	44443*	17142*	-5ft	
	10126*	20812*	26120*	31872*	38365*	21876*	-10ft	
		15115*	21361*	25674*	30132*		-15ft	
							-20ft	

THE FOLLOWING NOTES PERTAIN TO THIS MACHINE EQUIPPED WITH 12,600# ADDITIONAL COUNTERWEIGHT.

1. DO NOT ATTEMPT TO LIFT OR HOLD ANY LOAD THAT EXCEEDS THESE RATED VALUES.
2. MACHINE MUST NEVER BE OPERATED OVER THE SIDE.
3. THE OPERATOR SHOULD BE FULLY ACQUAINTED WITH MACHINE OPERATION BEFORE OPERATING THE MACHINE.
4. LIFTING CAPACITIES ASSUME MACHINE STANDING ON LEVEL, FIRM AND UNIFORM SUPPORTING SURFACE. OPERATOR MUST MAKE ALLOWANCE FOR JOB CONDITIONS SUCH AS SOFT UNEVEN GROUND, OUT OF LEVEL CONDITIONS, SIDE LOADS, SUDDEN STOPPING OF LOADS, HAZARDOUS CONDITIONS, INEXPERIENCED PERSONNEL, AND ECT.
5. THE ABOVE THEORETICAL RATINGS ARE BASED ON CALCULATIONS DERIVED FROM STANDARD O.E.M LIFT CHARTS BASED ON SAE STANDARD No J1097. THEY DO NOT EXCEED 87% HYDRAULIC LIFTING CAPACITY OR 75% OF TIPPING CAPACITY. RATED LOADS MARKED WITH A (*) ARE LIMITED HYDRAULICALLY.
6. HYDRAULIC LIMITS CALCULATED USING 34.3 Mpa (4975 psi).

8 7 6 5 4 3 2 1



DIPPER LENGTH KEY:
 3.00m (9'10")
 3.45m (11'4")
 4.04m (13'3")
 4.90m (16'1")

REVISIONS				
ZONE	REV.	DESCRIPTION	DATE	APPROVED

- NOTES:**
1. ATTACHMENT ILLUSTRATED IS SHOWN AS AN EXAMPLE ONLY. FULL SWEEP MAY NOT BE POSSIBLE WITH HEAVY ATTACHMENTS.
 2. BASE MACHINE SHOWN FOR REFERENCE ONLY.
 3. ALL DIPPER LENGTHS BASED ON OEM SUPPLY.

PROPRIETARY AND CONFIDENTIAL
 THE INFORMATION CONTAINED IN THIS DRAWING IS THE SOLE PROPERTY OF COMPANY WRENCH LTD. ANY REPRODUCTION IN PART OR AS A WHOLE WITHOUT THE WRITTEN PERMISSION OF COMPANY WRENCH LTD IS PROHIBITED.

MATERIAL:		
	NAME	DATE
DRAWN	ET	10/23/2014
APPROVED		
MFG. APPR.		
UNLESS OTHERWISE SPECIFIED DIMENSION TOLERANCES ARE AS FOLLOWS: DECIMAL: ±0.015" FRACTIONAL: ±1/16" ANGULAR: ±1°		
WEIGHT:		



4805 SCOOPY LANE NW
 CARROLL, OHIO 43112
 740-654-5304

The Cutting Edge of Customer Service

TITLE:
SK500LC-9 - EXC. TIP DEMO-EXTENSION RANGE

SCALE: NTS	SIZE B	DWG./PART NO.
SHEET 1 OF 1		

8 7 6 5 4 3 2 1

RATED LIFTING CAPACITIES

MACHINE : KOBELCO SK500LC-9
EQUIPMENT : STANDARD EQUIPMENT

MACHINE CONFIGURATION:

- STANDARD EQUIPMENT IN STRAIGHT POSITION
- 13'1" (4m) EXTENSION
- 12,600# ADDITION COUNTER WEIGHT
- 11'4" (3.45m) DIPPER
- UPRATED HOIST CYLINDERS (190mm BORE, 130 mm ROD)

WARNING : DO NOT OPERATE MACHINE OVER SIDE. OPERATE OVER FRONT ONLY WITH DRIVES TO THE REAR OF THE MACHINE.

LIFT CAPACITIES CALCULATED AT ATTACHMENT PIVOT POINT ON STICK (lbs)
NO ATTACHMENT ON STICK. ATTACHMENT WEIGHT MUST BE SUBTRACTED.

REACH							60ft	P I N
50ft	45ft	40ft	35ft	30ft	25ft	20ft		
							37228*	55ft
				25076*	29444*	30745*		50ft
			21352*	24620*	28551*	26021*		45ft
		18550*	21169*	24607*	27087*	24098*		40ft
		18439*	21197*	24817*	29892*	37629*		35ft
	14816	18412*	21300*	25151*	30687*			30ft
	14511	17865	21375*	25429*				25ft
10737	13970	16955	20716					20ft
11220	13414	16087	19404					15ft
10943	12924	15366	18422					10ft
10738	12557	14858	17839					5ft
	12349	14582	16606*					0ft
	12321	12968*	14286*					-5ft
	8805*	10602*	11547*	10587*				-10ft
	5628*	7601*	8289*					-15ft
								-20ft

H
E
I
G
H
T

THE FOLLOWING NOTES PERTAIN TO THIS MACHINE EQUIPPED WITH 12,600# ADDITIONAL COUNTERWEIGHT.

1. DO NOT ATTEMPT TO LIFT OR HOLD ANY LOAD THAT EXCEEDS THESE RATED VALUES.
2. MACHINE MUST NEVER BE OPERATED OVER THE SIDE.
3. THE OPERATOR SHOULD BE FULLY ACQUAINTED WITH MACHINE OPERATION BEFORE OPERATING THE MACHINE.
4. LIFTING CAPACITIES ASSUME MACHINE STANDING ON LEVEL, FIRM AND UNIFORM SUPPORTING SURFACE. OPERATOR MUST MAKE ALLOWANCE FOR JOB CONDITIONS SUCH AS SOFT UNEVEN GROUND, OUT OF LEVEL CONDITIONS, SIDE LOADS, SUDDEN STOPPING OF LOADS, HAZARDOUS CONDITIONS, INEXPERIENCED PERSONNEL, AND ECT.
5. THE ABOVE THEORETICAL RATINGS ARE BASED ON CALCULATIONS DERIVED FROM STANDARD O.E.M LIFT CHARTS BASED ON SAE STANDARD No J1097. THEY DO NOT EXCEED 87% HYDRAULIC LIFTING CAPACITY OR 75% OF TIPPING CAPACITY. RATED LOADS MARKED WITH A (*) ARE LIMITED HYDRAULICALLY.
6. HYDRAULIC LIMITS CALCULATED USING 34.3 Mpa (4975 psi).

RATED LIFTING CAPACITIES

MACHINE : KOBELCO SK500LC-9
EQUIPMENT : STANDARD EQUIPMENT

MACHINE CONFIGURATION:

- STANDARD EQUIPMENT IN STRAIGHT POSITION
- 13'1" (4m) EXTENSION
- 12,600# ADDITION COUNTER WEIGHT
- 13'3" (4.04m) DIPPER
- UPRATED HOIST CYLINDERS (190mm BORE, 130 mm ROD)

WARNING : DO NOT OPERATE MACHINE OVER SIDE. OPERATE OVER FRONT ONLY WITH DRIVES TO THE REAR OF THE MACHINE.

LIFT CAPACITIES CALCULATED AT ATTACHMENT PIVOT POINT ON STICK (lbs)
NO ATTACHMENT ON STICK. ATTACHMENT WEIGHT MUST BE SUBTRACTED.

REACH							60ft	P	
50ft	45ft	40ft	35ft	30ft	25ft	20ft			
							28742*	30114*	55ft
					24084*	25953*			50ft
			20323*	23731*	23025*				45ft
		17988*	20561*	23819*	21800*	19320*			40ft
		17864*	20635*	24231*	23663*	21517*			35ft
	14996	17879*	20733*	24535*	29629*				30ft
11718	14194	17857*	20913*	24886*					25ft
11419	13898	16689	20949	25097*					20ft
11059	13287	16039	19573						15ft
10718	12740	15247	18480						10ft
10447	12312	14659	17756						5ft
10305	12036	14299	17093*						0ft
9026*	11319*	13316*	15079*	19224*					-5ft
6741*	9388*	11119*	12433*	12421*					-10ft
	6636*	8453*	9393*						-15ft
									-20ft

P I V O T H E I G H T

THE FOLLOWING NOTES PERTAIN TO THIS MACHINE EQUIPPED WITH 12,600# ADDITIONAL COUNTERWEIGHT.

1. DO NOT ATTEMPT TO LIFT OR HOLD ANY LOAD THAT EXCEEDS THESE RATED VALUES.
2. MACHINE MUST NEVER BE OPERATED OVER THE SIDE.
3. THE OPERATOR SHOULD BE FULLY ACQUAINTED WITH MACHINE OPERATION BEFORE OPERATING THE MACHINE.
4. LIFTING CAPACITIES ASSUME MACHINE STANDING ON LEVEL, FIRM AND UNIFORM SUPPORTING SURFACE. OPERATOR MUST MAKE ALLOWANCE FOR JOB CONDITIONS SUCH AS SOFT UNEVEN GROUND, OUT OF LEVEL CONDITIONS, SIDE LOADS, SUDDEN STOPPING OF LOADS, HAZARDOUS CONDITIONS, INEXPERIENCED PERSONNEL, AND ECT.
5. THE ABOVE THEORETICAL RATINGS ARE BASED ON CALCULATIONS DERIVED FROM STANDARD O.E.M LIFT CHARTS BASED ON SAE STANDARD No J1097. THEY DO NOT EXCEED 87% HYDRAULIC LIFTING CAPACITY OR 75% OF TIPPING CAPACITY. RATED LOADS MARKED WITH A (*) ARE LIMITED HYDRAULICALLY.
6. HYDRAULIC LIMITS CALCULATED USING 31.4 Mpa (4550 psi).

RATED LIFTING CAPACITIES

MACHINE : KOBELCO SK500LC-9
EQUIPMENT : STANDARD EQUIPMENT

MACHINE CONFIGURATION:

- STANDARD EQUIPMENT IN STRAIGHT POSITION
- 13'1" (4m) EXTENSION
- 12,600# ADDITIONAL COUNTER WEIGHT
- 16'1" (4.9m) DIPPER
- UPRATED HOIST CYLINDERS (190mm BORE, 130 mm ROD)

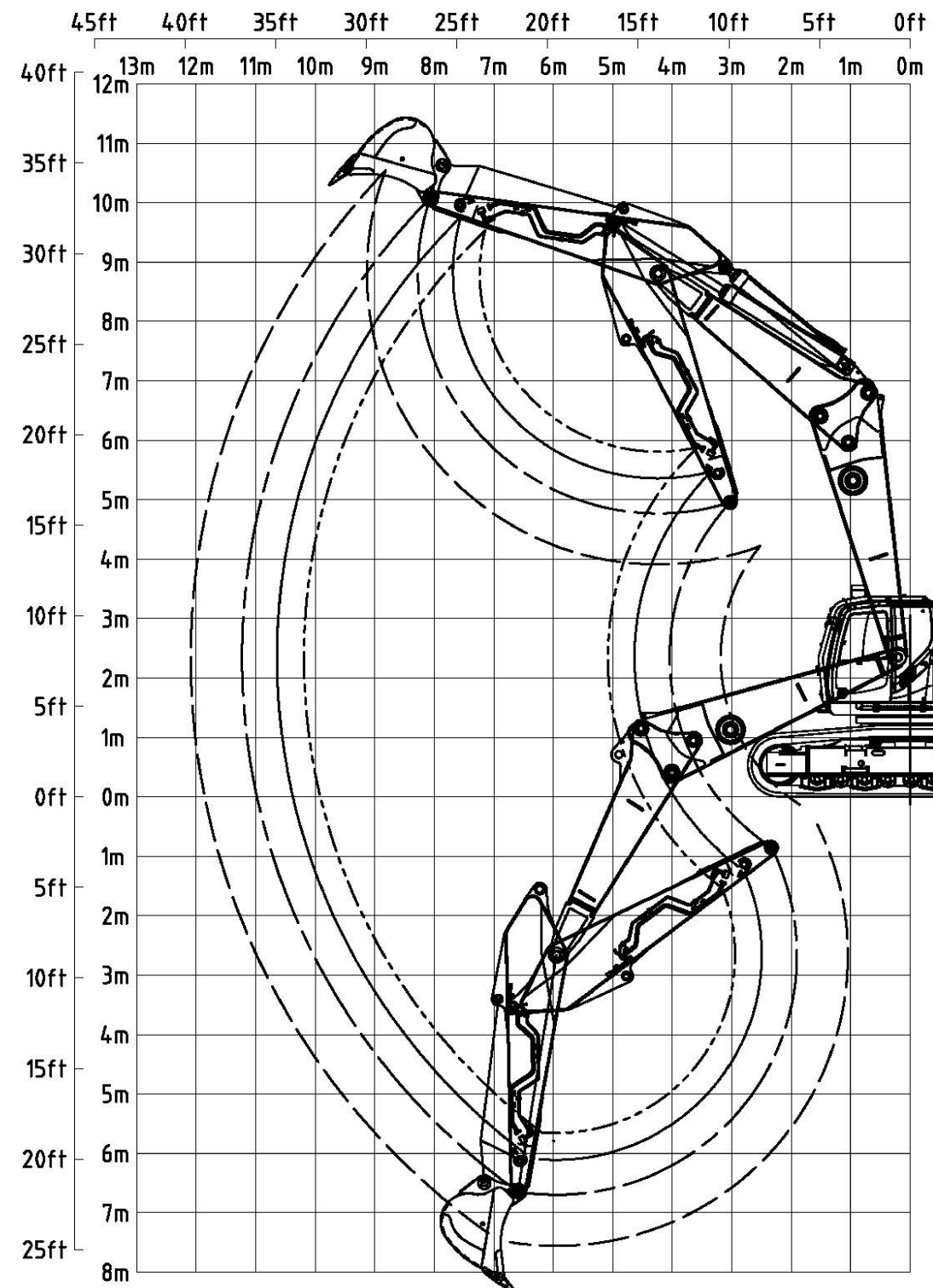
WARNING : DO NOT OPERATE MACHINE OVER SIDE. OPERATE OVER FRONT ONLY WITH DRIVES TO THE REAR OF THE MACHINE.

LIFT CAPACITIES CALCULATED AT ATTACHMENT PIVOT POINT ON STICK (lbs)
NO ATTACHMENT ON STICK. ATTACHMENT WEIGHT MUST BE SUBTRACTED.

REACH								60ft	P
55ft	50ft	45ft	40ft	35ft	30ft	25ft	20ft		
							27977*	60ft	I N H E I G H T
					22301*	23021*		55ft	
				20250*	20677*	19581*		50ft	
			17197*	19861*	18717*	17184*		45ft	
		15478*	17471*	19123*	17698*	15870*		40ft	
	12259	15401*	17475*	19413*	18049*	16186*	13317*	35ft	
	12278	15366*	17550*	20295*	21226*	20995*	24581*	30ft	
	12000	14827	17631*	20540*	24439*	30038*		25ft	
9451	11602	14162	17376	20682*	24760*			20ft	
9248	11166	13482	15939	20063	24677*			15ft	
9023	10749	12856	15473	18798				10ft	
8837	10399	12337	14761	17872				5ft	
8736	10152	11965	14271	17304	17014*			0ft	
7228*	9941*	11760	14010	16155*	17719*			-5ft	
	8230*	10351*	12226*	13873*	14822*	11463*		-10ft	
	5742*	8117*	9833*	11092*	11470*			-15ft	
		5194*	5860*	7694*				-20ft	

THE FOLLOWING NOTES PERTAIN TO THIS MACHINE EQUIPPED WITH 12,600# ADDITIONAL COUNTERWEIGHT.

1. DO NOT ATTEMPT TO LIFT OR HOLD ANY LOAD THAT EXCEEDS THESE RATED VALUES.
2. MACHINE MUST NEVER BE OPERATED OVER THE SIDE.
3. THE OPERATOR SHOULD BE FULLY ACQUAINTED WITH MACHINE OPERATION BEFORE OPERATING THE MACHINE.
4. LIFTING CAPACITIES ASSUME MACHINE STANDING ON LEVEL, FIRM AND UNIFORM SUPPORTING SURFACE. OPERATOR MUST MAKE ALLOWANCE FOR JOB CONDITIONS SUCH AS SOFT UNEVEN GROUND, OUT OF LEVEL CONDITIONS, SIDE LOADS, SUDDEN STOPPING OF LOADS, HAZARDOUS CONDITIONS, INEXPERIENCED PERSONNEL, AND ECT.
5. THE ABOVE THEORETICAL RATINGS ARE BASED ON CALCULATIONS DERIVED FROM STANDARD O.E.M LIFT CHARTS BASED ON SAE STANDARD No J1097. THEY DO NOT EXCEED 87% HYDRAULIC LIFTING CAPACITY OR 75% OF TIPPING CAPACITY. RATED LOADS MARKED WITH A (*) ARE LIMITED HYDRAULICALLY.
6. HYDRAULIC LIMITS CALCULATED USING 34.3 Mpa (4975 psi).



DIPPER LENGTH KEY:
 3.00m (9'10")
 3.45m (11'4")
 4.04m (13'3")
 4.90m (16'1")

REVISIONS				
ZONE	REV.	DESCRIPTION	DATE	APPROVED

- NOTES:**
1. ATTACHMENT ILLUSTRATED IS SHOWN AS AN EXAMPLE ONLY. FULL SWEEP MAY NOT BE POSSIBLE WITH HEAVY ATTACHMENTS.
 2. BASE MACHINE SHOWN FOR REFERENCE ONLY.
 3. ALL DIPPER LENGTHS BASED ON OEM SUPPLY.

PROPRIETARY AND CONFIDENTIAL
 THE INFORMATION CONTAINED IN THIS DRAWING IS THE SOLE PROPERTY OF COMPANY WRENCH LTD. ANY REPRODUCTION IN PART OR AS A WHOLE WITHOUT THE WRITTEN PERMISSION OF COMPANY WRENCH LTD IS PROHIBITED.

MATERIAL:		
	NAME	DATE
DRAWN	ET	10/23/2014
APPROVED		
MFG. APPR.		
UNLESS OTHERWISE SPECIFIED DIMENSION TOLERANCES ARE AS FOLLOWS: DECIMAL: $\pm 0.015"$ FRACTIONAL: $\pm 1/16"$ ANGULAR: $\pm 1^\circ$		
WEIGHT:		



4805 SCOOPY LANE NW
 CARROLL, OHIO 43112
 740-654-5304

The Cutting Edge of Customer Service

TITLE: SK500LC-9 - EXC. TIP DIG RANGE		
SCALE: NTS	SIZE B	DWG./PART NO.
SHEET 1 OF 1		

RATED LIFTING CAPACITIES

MACHINE : KOBELCO SK500LC-9
EQUIPMENT : STANDARD EQUIPMENT

MACHINE CONFIGURATION:

- STANDARD EQUIPMENT IN BENT POSITION
- 12,600# ADDITION COUNTER WEIGHT
- 11'4" (3.45m) DIPPER
- UPRATED HOIST CYLINDER (190mm BORE, 130mm ROD)

WARNING : DO NOT OPERATE MACHINE OVER SIDE. OPERATE OVER FRONT ONLY WITH DRIVES TO THE REAR OF THE MACHINE.

LIFT CAPACITIES CALCULATED AT ATTACHMENT PIVOT POINT ON STICK (lbs)
NO ATTACHMENT ON STICK. ATTACHMENT WEIGHT MUST BE SUBTRACTED.

REACH							30ft	P
35ft	30ft	25ft	20ft	15ft	10ft	5ft		
							25ft	N
	23432*	27903*					20ft	
	27250*	29881*					15ft	H
	28674*	32755*	39917*	54897*			10ft	
	30350*	35822*	45483*				5ft	E
	31790*	38316*	49367*	18440*			0ft	
	31403	39656*	50803*	29782*			-5ft	I
	31075	39484*	50196*	46020*	25085*		-10ft	
		37605*	46888*	59627*	43427*		-15ft	G
		32130*	40906*	51155*			-20ft	
			29345*				-25ft	H
							-25ft	

THE FOLLOWING NOTES PERTAIN TO THIS MACHINE EQUIPPED WITH 12,600# ADDITIONAL COUNTERWEIGHT.

1. DO NOT ATTEMPT TO LIFT OR HOLD ANY LOAD THAT EXCEEDS THESE RATED VALUES.
2. MACHINE MUST NEVER BE OPERATED OVER THE SIDE.
3. THE OPERATOR SHOULD BE FULLY ACQUAINTED WITH MACHINE OPERATION BEFORE OPERATING THE MACHINE.
4. LIFTING CAPACITIES ASSUME MACHINE STANDING ON LEVEL, FIRM AND UNIFORM SUPPORTING SURFACE. OPERATOR MUST MAKE ALLOWANCE FOR JOB CONDITIONS SUCH AS SOFT UNEVEN GROUND, OUT OF LEVEL CONDITIONS, SIDE LOADS, SUDDEN STOPPING OF LOADS, HAZARDOUS CONDITIONS, INEXPERIENCED PERSONNEL, AND ECT.
5. THE ABOVE THEORETICAL RATINGS ARE BASED ON CALCULATIONS DERIVED FROM STANDARD O.E.M LIFT CHARTS BASED ON SAE STANDARD No J1097. THEY DO NOT EXCEED 87% HYDRAULIC LIFTING CAPACITY OR 75% OF TIPPING CAPACITY. RATED LOADS MARKED WITH A (*) ARE LIMITED HYDRAULICALLY.
6. HYDRAULIC LIMITS CALCULATED USING 34.3 Mpa (4975 psi).

RATED LIFTING CAPACITIES

MACHINE : KOBELCO SK500LC-9
EQUIPMENT : STANDARD EQUIPMENT

MACHINE CONFIGURATION:

- STANDARD EQUIPMENT IN BENT POSITION
- 12,600# ADDITION COUNTER WEIGHT
- 13'3" (4.04m) DIPPER
- UPRATED HOIST CYLINDER (190mm BORE, 130mm ROD)

WARNING : DO NOT OPERATE MACHINE OVER SIDE. OPERATE OVER FRONT ONLY WITH DRIVES TO THE REAR OF THE MACHINE.

LIFT CAPACITIES CALCULATED AT ATTACHMENT PIVOT POINT ON STICK (lbs)
NO ATTACHMENT ON STICK. ATTACHMENT WEIGHT MUST BE SUBTRACTED.

REACH							30ft	P
40ft	35ft	30ft	25ft	20ft	15ft	10ft		
		22899*					25ft	N
		25556*	27854*				20ft	
	21958*	27201*	31120*	37181*	49527*		15ft	H
	24297*	29110*	34236*	43139*	47565*		10ft	
	24103	30846*	37132*	47805*	29983*		5ft	E
	23588	31344	38996*	50253*	34233*		0ft	
		30858	39451*	50330*	45360*	25321*	-5ft	I
		30737*	38159*	48222*	61698*	39544*	-10ft	
			34388*	43494*	55589*	56557*	-15ft	G
				34597*	43924*		-20ft	
							-25ft	H
								T

THE FOLLOWING NOTES PERTAIN TO THIS MACHINE EQUIPPED WITH 12,600# ADDITIONAL COUNTERWEIGHT.

1. DO NOT ATTEMPT TO LIFT OR HOLD ANY LOAD THAT EXCEEDS THESE RATED VALUES.
2. MACHINE MUST NEVER BE OPERATED OVER THE SIDE.
3. THE OPERATOR SHOULD BE FULLY ACQUAINTED WITH MACHINE OPERATION BEFORE OPERATING THE MACHINE.
4. LIFTING CAPACITIES ASSUME MACHINE STANDING ON LEVEL, FIRM AND UNIFORM SUPPORTING SURFACE. OPERATOR MUST MAKE ALLOWANCE FOR JOB CONDITIONS SUCH AS SOFT UNEVEN GROUND, OUT OF LEVEL CONDITIONS, SIDE LOADS, SUDDEN STOPPING OF LOADS, HAZARDOUS CONDITIONS, INEXPERIENCED PERSONNEL, AND ECT.
5. THE ABOVE THEORETICAL RATINGS ARE BASED ON CALCULATIONS DERIVED FROM STANDARD O.E.M LIFT CHARTS BASED ON SAE STANDARD No J1097. THEY DO NOT EXCEED 87% HYDRAULIC LIFTING CAPACITY OR 75% OF TIPPING CAPACITY. RATED LOADS MARKED WITH A (*) ARE LIMITED HYDRAULICALLY.
6. HYDRAULIC LIMITS CALCULATED USING 34.3 Mpa (4975 psi).

RATED LIFTING CAPACITIES

MACHINE : KOBELCO SK500LC-9
EQUIPMENT : STANDARD EQUIPMENT

MACHINE CONFIGURATION:

- STANDARD EQUIPMENT IN BENT POSITION
- 12,600# ADDITION COUNTER WEIGHT
- 16'1" (4.9m) DIPPER
- UPRATED HOIST CYLINDER (190mm BORE, 130mm ROD)

WARNING : DO NOT OPERATE MACHINE OVER SIDE. OPERATE OVER FRONT ONLY WITH DRIVES TO THE REAR OF THE MACHINE.

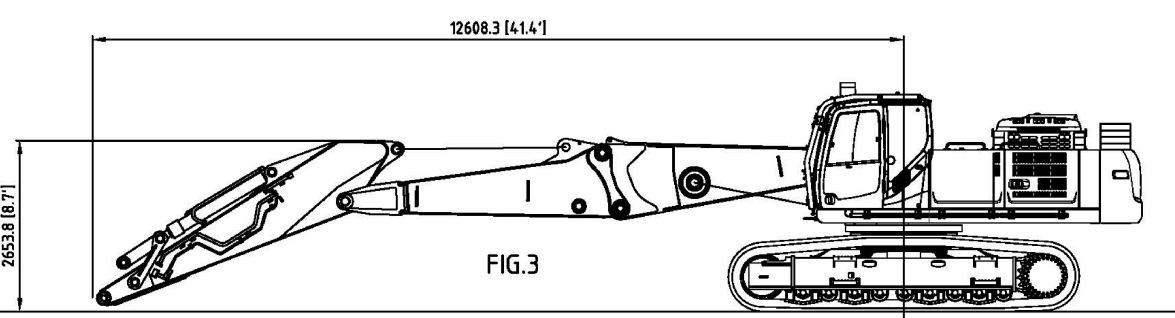
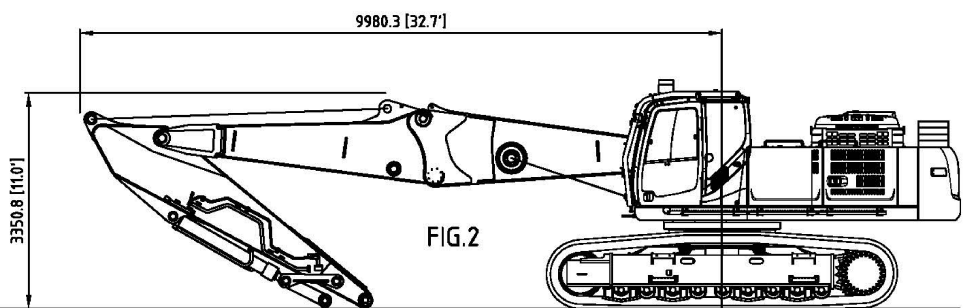
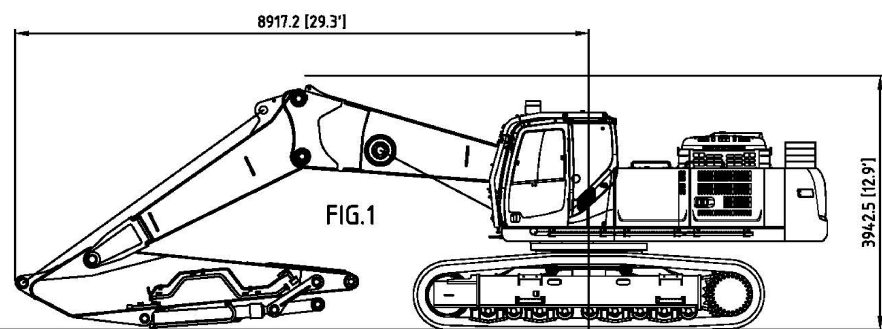
LIFT CAPACITIES CALCULATED AT ATTACHMENT PIVOT POINT ON STICK (lbs)
NO ATTACHMENT ON STICK. ATTACHMENT WEIGHT MUST BE SUBTRACTED.

REACH									P I V O T P O I N T H E I G H T
40ft	35ft	30ft	25ft	20ft	15ft	10ft	5ft		
								35ft	
		17659*						30ft	
	14452*	20147*						25ft	
	18642*	22678*						20ft	
	21886*	24812*	27811*					15ft	
	24112*	26964*	31408*	39065*	53936*			10ft	
	25129	29042*	34775*	44495*	42545*			5ft	
	24424	30669*	37303*	48153*	37343*	34574*		0ft	
	24268	30389	38596*	49608*	42954*	23377*	16517*	-5ft	
	24203	30078	38363*	48892*	54097*	33787*	26716*	-10ft	
		28999*	36167*	45833*	68908*	46523*	36350*	-15ft	
			30856*	39620*	51126*	63644*		-20ft	
								-25ft	

THE FOLLOWING NOTES PERTAIN TO THIS MACHINE EQUIPPED WITH 12,600# ADDITIONAL COUNTERWEIGHT.

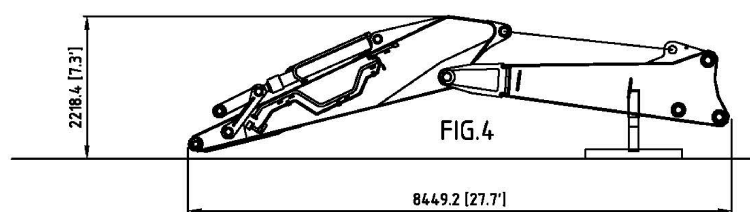
1. DO NOT ATTEMPT TO LIFT OR HOLD ANY LOAD THAT EXCEEDS THESE RATED VALUES.
2. MACHINE MUST NEVER BE OPERATED OVER THE SIDE.
3. THE OPERATOR SHOULD BE FULLY ACQUAINTED WITH MACHINE OPERATION BEFORE OPERATING THE MACHINE.
4. LIFTING CAPACITIES ASSUME MACHINE STANDING ON LEVEL, FIRM AND UNIFORM SUPPORTING SURFACE. OPERATOR MUST MAKE ALLOWANCE FOR JOB CONDITIONS SUCH AS SOFT UNEVEN GROUND, OUT OF LEVEL CONDITIONS, SIDE LOADS, SUDDEN STOPPING OF LOADS, HAZARDOUS CONDITIONS, INEXPERIENCED PERSONNEL, AND ECT.
5. THE ABOVE THEORETICAL RATINGS ARE BASED ON CALCULATIONS DERIVED FROM STANDARD O.E.M LIFT CHARTS BASED ON SAE STANDARD No J1097. THEY DO NOT EXCEED 87% HYDRAULIC LIFTING CAPACITY OR 75% OF TIPPING CAPACITY. RATED LOADS MARKED WITH A (*) ARE LIMITED HYDRAULICALLY.
6. HYDRAULIC LIMITS CALCULATED USING 34.3 Mpa (4975 psi).

REVISIONS				
ZONE	REV.	DESCRIPTION	DATE	APPROVED

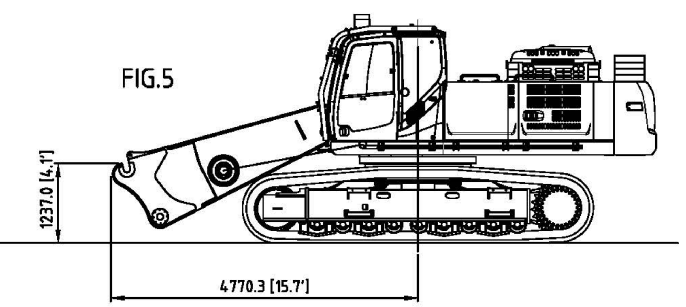


BASE MACHINE (INC. FRONT EQUIPMENT - FIG 1-3)
 CALCULATED APPROX. WEIGHT = 58,191 kg (128,289lb)
 INCLUDES: KOBELCO SK500LC-9 BASE MACHINE (900mm SHOES), ALL FLUIDS, UP-RATED HOIST CYLINDERS (190mm BORE), BASE BOOM ASSY, TOP STD BOOM ASSY, OEM DIPPER CYLINDER, OEM DIPPER (4.04m), OEM ATTACHMENT CYLINDER AND LINKAGE.
 TILTING CAB & GUARD (SUPPLIED BY COMPANY WRENCH) - 1,361 kg (3000 lb)
 ADDITIONAL C/WT (SUPPLIED BY COMPANY WRENCH) - 5,715 kg (12,600 lb),

FRONT EQUIPMENT (FIG. 4)
 CALCULATED APPROX. WEIGHT = 5,810kg (12,808 lb)
 TOP STANDARD BOOM, OEM DIPPER (4.04m), OEM DIPPER CYLINDER, OEM ATTACHMENT CYLINDER AND LINKAGE, A-FRAME (135kg / 298 lb).



BASE MACHINE (NO FRONT EQUIPMENT - FIG. 5)
 CALCULATED APPROX. WEIGHT = 52,516 kg (115,777 lb)
 INCLUDES: KOBELCO SK500LC-9 BASE MACHINE (900mm SHOES), ALL FLUIDS, UP-RATED HOIST CYLINDERS (190mm BORE), BASE BOOM ASSY.
 TILTING CAB & GUARD (SUPPLIED BY COMPANY WRENCH) - 1,361 kg (3000 lb),
 ADDITIONAL C/WT (SUPPLIED BY COMPANY WRENCH) - 5,715 kg (12,600 lb),



NOTES
 1. ALL WEIGHTS AND DIMENSIONS APPROXIMATE - BASE MACHINE

PROPRIETARY AND CONFIDENTIAL
 THE INFORMATION CONTAINED IN THIS DRAWING IS THE SOLE PROPERTY OF COMPANY WRENCH LTD. ANY REPRODUCTION IN PART OR AS A WHOLE WITHOUT THE WRITTEN PERMISSION OF COMPANY WRENCH LTD IS PROHIBITED.

MATERIAL:		
	NAME	DATE
DRAWN	ET	10/23/2014
APPROVED		
MFG. APPR.		
UNLESS OTHERWISE SPECIFIED DIMENSION TOLERANCES ARE AS FOLLOWS:		
DECIMAL: ±0.015"		
FRACTIONAL: ±1/16"		
ANGULAR: ±1°		
WEIGHT:		



4805 SCOOPY LANE NW
 CARROLL, OHIO 43112
 740-654-5304

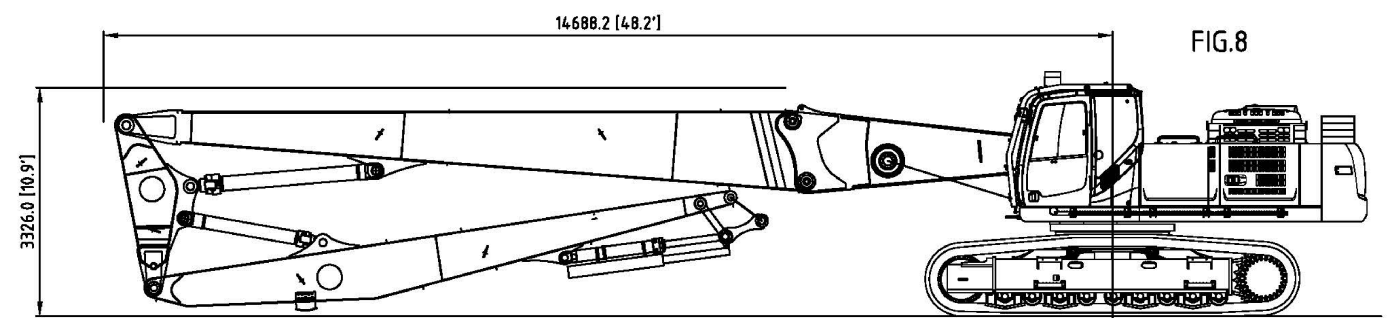
The Cutting Edge of Customer Service

TITLE: **SK500LC-9 - 92' H.R. CARRIER TRANS DIMS**

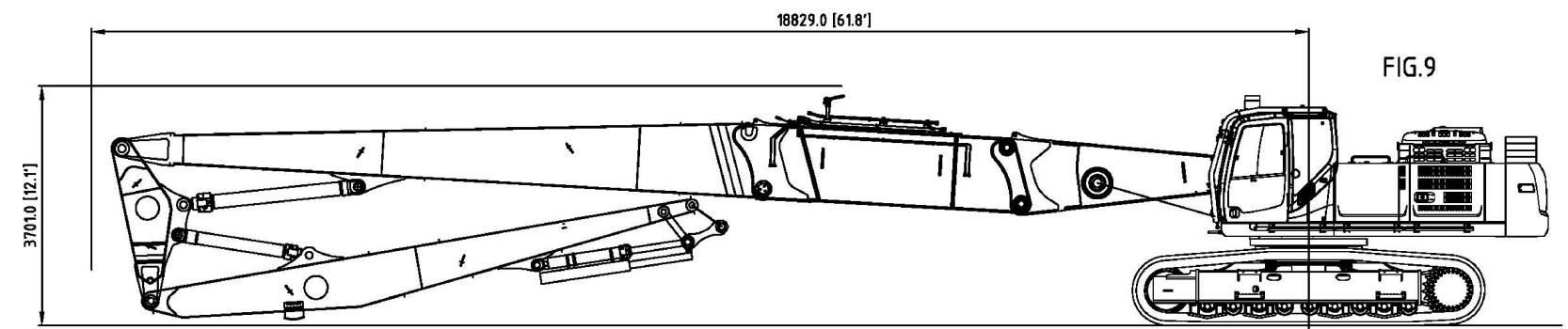
SCALE: NTS	SIZE B	DWG./PART NO.
SHEET 1 OF 1		

REVISIONS				
ZONE	REV.	DESCRIPTION	DATE	APPROVED

BASE MACHINE (INC. DEMO EQUIPMENT - NO ATTACHMENT - FIG.8)
CALCULATED APPROX WEIGHT = 57,128 kg (125,946lb)
 INCLUDES: KOBELCO SK500LC-9 BASE MACHINE (900mm SHOES), ALL FLUIDS, UP-RATED HOIST CYLINDERS (190mm BORE), BASE BOOM ASSY, DEMO BOOM ASSY, DEMO CYLINDER ASSYS (X2), MID DIPPER ASSY, DEMO DIPPER ASSY, ATTACHMENT CYLINDER ASSY & GUARD ASSY, LINKAGE ASSY.
 TILTING CAB & GUARD (SUPPLIED BY COMPANY WRENCH) - 1361 kg (3000 lb)
 ADDITIONAL C/WT (SUPPLIED BY COMPANY WRENCH) - 5,715 kg (12,600 lb)



BASE MACHINE (INC. DEMO EQUIPMENT & BOOM EXTENSION ASSY - NO ATTACHMENT - FIG.9)
CALCULATED APPROX WEIGHT = 60,169kg (132,650 lb)
 INCLUDES: KOBELCO SK500LC-9 BASE MACHINE (900mm SHOES), ALL FLUIDS, UP-RATED HOIST CYLINDER ASSY (190 BORE), BASE BOOM ASSY, BOOM EXTENSION ASSY (4.0m/13ft), DEMO BOOM ASSY, DEMO CYLINDER ASSYS (X2), MID DIPPER ASSY, DEMO DIPPER ASSY, ATTACHMENT CYLINDER ASSY & GUARD ASSY, LINKAGE ASSY.
 TILTING CAB & GUARD (SUPPLIED BY COMPANY WRENCH) - 1361 kg (3000 lb)
 ADDITIONAL C/WT (SUPPLIED BY COMPANY WRENCH) - 5,715 kg (12,600 lb)



NOTES
 1. ALL WEIGHTS AND DIMENSIONS APPROXIMATE - BASE MACHINE

PROPRIETARY AND CONFIDENTIAL
 THE INFORMATION CONTAINED IN THIS DRAWING IS THE SOLE PROPERTY OF COMPANY WRENCH LTD. ANY REPRODUCTION IN PART OR AS A WHOLE WITHOUT THE WRITTEN PERMISSION OF COMPANY WRENCH LTD IS PROHIBITED.

MATERIAL:

	NAME	DATE
DRAWN	ET	10/23/2014
APPROVED		
MFG. APPR.		

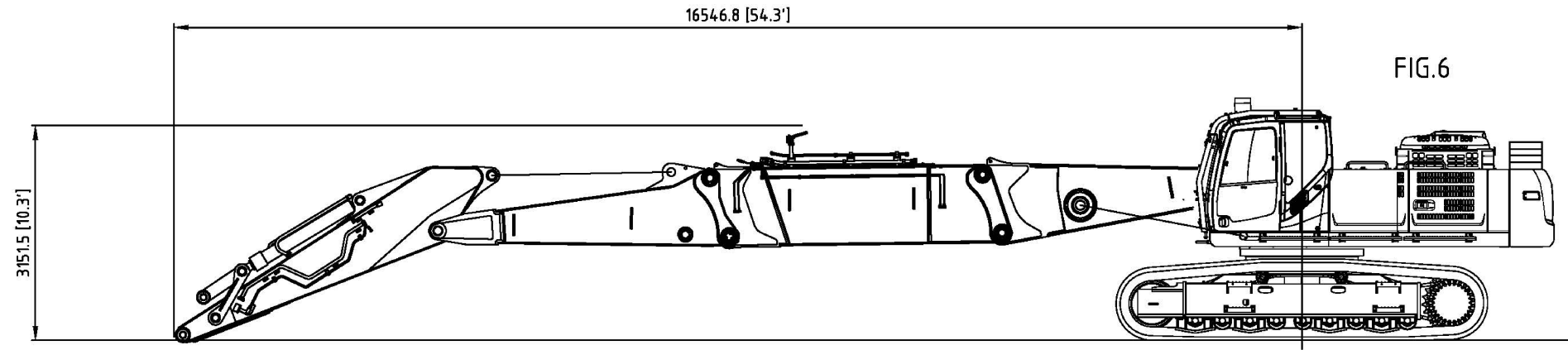


4805 SCOOPY LANE NW
 CARROLL, OHIO 43112
 740-654-5304

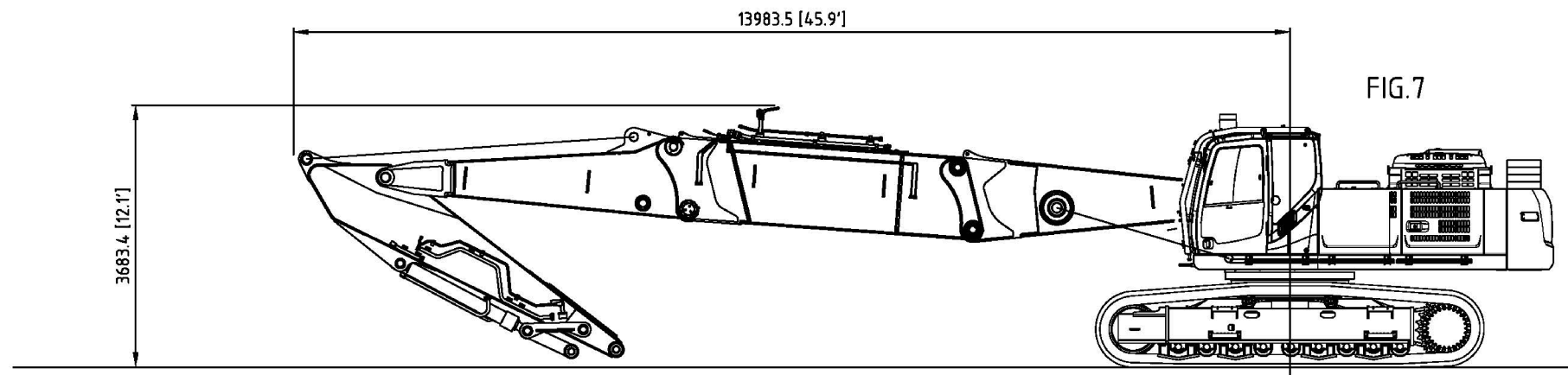
The Cutting Edge of Customer Service

UNLESS OTHERWISE SPECIFIED DIMENSION TOLERANCES ARE AS FOLLOWS: DECIMAL: ±0.015" FRACTIONAL: ±1/16" ANGULAR: ±1°		TITLE: SK500LC-9 - 92' H.R. OVERALL TRANS DIMS	
WEIGHT:	SHEET 1 OF 1	SCALE: NTS	SIZE B
		DWG./PART NO.	

REVISIONS				
ZONE	REV.	DESCRIPTION	DATE	APPROVED



BASE MACHINE (INC. FRONT EQUIPMENT & BOOM EXTENSION - FIG 6-7)
CALCULATED APPROX WEIGHT = 61,232 kg (134,993 lb)
 INCLUDES: KOBELCO SK500LC-9 BASE MACHINE (900mm SHOES), ALL FLUIDS, UP-RATED HOIST CYLINDERS (190mm BORE),
 BASE BOOM ASSY, BOOM EXTENSION ASSY (4.0m/13ft), TOP STD BOOM ASSY, OEM DIPPER CYLINDER, OEM DIPPER (4.04m),
 OEM ATTACHMENT CYLINDER AND LINKAGE.
 TILTING CAB & GUARD (SUPPLIED BY COMPANY WRENCH) - 1,361 kg (3000 lb)
 ADDITIONAL C/WT (SUPPLIED BY COMPANY WRENCH) - 5,715 kg (12,600 lb)



NOTES
 1. ALL WEIGHTS AND DIMENSIONS APPROXIMATE - BASE MACHINE

MATERIAL:		
	NAME	DATE
DRAWN	ET	10/23/2014
APPROVED		
MFG. APPR.		



4805 SCOOPY LANE NW
 CARROLL, OHIO 43112
 740-654-5304

The Cutting Edge of Customer Service

PROPRIETARY AND CONFIDENTIAL
 THE INFORMATION CONTAINED IN THIS DRAWING IS THE SOLE PROPERTY OF COMPANY WRENCH LTD. ANY REPRODUCTION IN PART OR AS A WHOLE WITHOUT THE WRITTEN PERMISSION OF COMPANY WRENCH LTD IS PROHIBITED.

UNLESS OTHERWISE SPECIFIED DIMENSION TOLERANCES ARE AS FOLLOWS:
 DECIMAL: ±0.015"
 FRACTIONAL: ±1/16"
 ANGULAR: ±1°

WEIGHT:

TITLE: SK500LC-9 - EXC. TIP OVERALL TRANS DIMS		
SCALE: NTS	SIZE B	DWG./PART NO.
SHEET 1 OF 1		