

PC360LC-11/PC360LCi-11

Hydraulic excavator



Innovation



Performance



Efficiency



Improve your efficiency – less time required to complete excavation to finish grade with intelligent Machine Control.

Net horsepower

257 HP / 192 kW @ 1,950 rpm

Operating weight

78,645–80,547 lbs. / 35,627–36,535 kg

Bucket capacity

0.89–2.56 yd³ / 0.68–1.96 m³



PC360LC-11/PC360LCi-11

Engine*

Model	Komatsu SAA6D114E-6*		
Type	Water-cooled, 4-cycle, direct injection		
Aspiration	Variable Geometry Turbocharger with air-to-air aftercooler and EGR		
Number of cylinders	6		
Bore x stroke	114 mm x 144.5 mm 4.49" x 5.69"		
Piston displacement	8.85 L 540 in ³		
Horsepower			
SAE J1995	Gross	202 kW	271 HP
ISO 9249 / SAE J1349	Net	192 kW	257 HP
	Rated rpm	1,950	
Fan drive method for radiator cooling	Mechanical		
Governor	All-speed control, electronic		

*EPA Tier 4 Final emissions certified

Hydraulics

Type	HydrauMind (Hydraulic Mechanical Intelligence) system, closed-center system with load sensing valve and pressure compensated valves		
Number of selectable working modes	6		
Main pump			
Type	Variable displacement axial piston type		
Pumps for	Boom, arm, bucket, swing, and travel circuits		
Maximum flow	535 L/min	141.3 gal/min	
Supply for control circuit	Self-reducing valve		

Hydraulic motors

Travel	2 x axial piston motors with parking brake		
Swing	1 x axial piston motor with swing holding brake		

Relief valve setting

Implement circuits	37.3 MPa	380 kg/cm ²	5,400 psi
Travel circuit	37.3 MPa	380 kg/cm ²	5,400 psi
Swing circuit	27.9 MPa	285 kg/cm ²	4,050 psi
Pilot circuit	3.2 MPa	33 kg/cm ²	470 psi

Hydraulic cylinders

(Number of cylinders – bore x stroke x rod diameter)

Boom	2–140 mm x 1480 mm x 100 mm	5.5" x 58.3" x 3.9"
Arm	1–160 mm x 1825 mm x 110 mm	6.3" x 71.9" x 4.3"
Bucket for 3.2 m 10'5" and 4.0 m 13'2" Arms		
	1–140 mm x 1285 mm x 100 mm	5.5" x 50.6" x 3.9"

Drives and brakes

Steering control	Two levers with pedals		
Drive method	Hydrostatic		
Maximum drawbar pull	290 kN 29,570 kg 65,191 lbs.		
Gradeability	70%, 35°		
Maximum travel speed			
	High	5.5 km/h	3.4 mph
	Mid	4.2 km/h	2.8 mph
	Low	3.2 km/h	2.0 mph
Service brake	Hydraulic lock		
Parking brake	Mechanical disc brake		

Swing system

Drive method	Hydraulic motor	
Swing reduction	Planetary gear	
Swing circle lubrication	Grease-bathed	
Service brake	Hydraulic lock	
Holding brake/Swing lock	Mechanical disc brake	
Swing speed	9.5 rpm	
Swing torque	11,386 kg•m 82,313 ft. lbs.	

Undercarriage

Center frame	X-frame	
Track frame	Box-section	
Track type	Sealed	
Track adjuster	Hydraulic	
Number of shoes (each side)	48	
Number of carrier rollers (each side)	2	
Number of track rollers (each side)	8	

Coolant and lubricant capacity (refilling)

Fuel tank	605 L	159.8 U.S. gal
Radiator	37 L	9.7 U.S. gal
Engine	35 L	9.2 U.S. gal
Final drive, each side	9.0 L	2.4 U.S. gal
Swing drive	13.7 L	3.6 U.S. gal
Hydraulic tank	188 L	49.7 U.S. gal
Diesel Exhaust Fluid (DEF) tank	39 L	10.3 U.S. gal

Sound performance

Exterior – ISO 6395	103 dB(A)
Operator – ISO 6396	71dB(A)

Operating weight (approximate)*

Operating weight includes 6,500 mm 21'3" one-piece boom, 3,185 mm 10'5" arm, SAE heaped 1.96 m³ 2.56 yd³ bucket, rated capacity of lubricants, coolant, full fuel tank, operator, and standard equipment.

Triple-grouser shoes	Operating weight	Ground pressure ISO 16754
700 mm 28"	35,748 kg 78,645 lbs.	0.59 kg/cm ² 8.34 psi
800 mm 31.5"	36,129 kg 79,483 lbs.	0.52 kg/cm ² 7.38 psi
850 mm 33.5"	36,509 kg 80,320 lbs.	0.50 kg/cm ² 7.02 psi

*See equipment page for option availability.

Component weights

Arm including bucket cylinder and linkage

3,185 mm 10'5" arm assembly	1,761 kg	3,882 lbs.
4,020 mm 13'2" arm assembly	1,988 kg	4,383 lbs.

One piece HD boom including arm cylinder

6,500 mm 21'3" boom assembly	3,135 kg	6,912 lbs.
------------------------------	----------	------------

Boom cylinders x 2

	259 kg	571 lbs.
--	--------	----------

Counterweight

	6,920 kg	15,255 lbs.
--	----------	-------------

1.96 m³ 2.56 yd³ bucket - 54" width

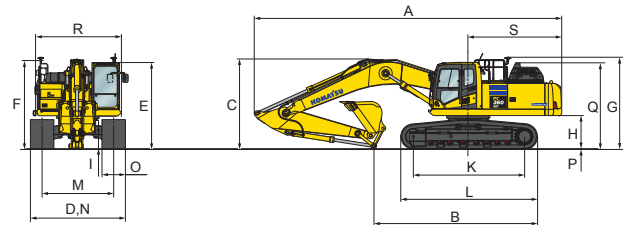
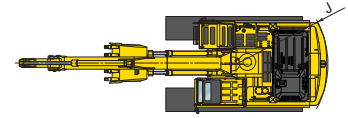
	1,554 kg	3,425 lbs.
--	----------	------------

Dimensions

Arm Length	3,185 mm	10'5"	4,020 mm	13'2"
A Overall length	11,145 mm	36'7"	11,170 mm	36'8"
B Length on ground (transport)	5,935 mm	19'6"	5,475 mm	18'0"
C Overall height (to top of boom)*	3,285 mm	10'9"	3,760 mm	12'4"
D Overall width	3,440 mm	11'3"		
E Overall height (to top of cab)*	3,160 mm	10'4"		
F Overall height (to top of handrail)*	3,255 mm	10'8"		
G Overall height (to top of GNSS antenna)*	3,330 mm	10'11"		
H Ground clearance, counterweight	1,185 mm	3'11"		
I Ground clearance, minimum	498 mm	1'8"		
J Tail swing radius	3,445 mm	11'4"		
K Track length on ground	4,030 mm	13'3"		
L Track length	4,955 mm	16'3"		
M Track gauge	2,590 mm	8'6"		
N Width of crawler	700 mm 28" shoe	3,290 mm	10'7"	
	800 mm 31.5" shoe	3,390 mm	11'1"	
	850 mm 33.5" shoe	3,440 mm	11'3"	
O Shoe width	850 mm	33.5"		
P Grouser height	36 mm	1.4"		
Q Machine height to top of engine cover	3,135 mm	10'3"		
R Machine upper width**	3,145 mm	10'4"		
S Distance, swing center to rear end	3,405 mm	11'2"		

*Including grouser height

**Including handrail



Backhoe bucket, arm and boom combination

Bucket type	Capacity		Teeth	Bucket		Weight	6.5 m (21'3") Boom	
				Width			3.2 m (10'5")	4.0 m (13'2")
Komatsu TL	0.93 m ³	1.21 yd ³	4	762 mm	30"	1097 kg 2418 lbs.	●	●
	1.18 m ³	1.54 yd ³	4	914 mm	36"	1198 kg 2641 lbs.	●	●
	1.44 m ³	1.88 yd ³	5	1067 mm	42"	1325 kg 2921 lbs.	●	●
	1.70 m ³	2.22 yd ³	5	1219 mm	48"	1426 kg 3144 lbs.	●	○
	1.96 m ³	2.56 yd ³	6	1372 mm	54"	1554 kg 3425 lbs.	○	□
Komatsu HP	0.68 m ³	0.89 yd ³	3	610 mm	24"	1022 kg 2254 lbs.	●	●
	0.93 m ³	1.21 yd ³	4	762 mm	30"	1178 kg 2598 lbs.	●	●
	1.18 m ³	1.54 yd ³	4	914 mm	36"	1358 kg 2993 lbs.	●	●
	1.44 m ³	1.88 yd ³	5	1067 mm	42"	1439 kg 3173 lbs.	●	●
	1.70 m ³	2.22 yd ³	5	1219 mm	48"	1555 kg 3429 lbs.	●	□
	1.96 m ³	2.56 yd ³	6	1372 mm	54"	1701 kg 3750 lbs.	□	⊙
Komatsu HPS	0.68 m ³	0.89 yd ³	3	610 mm	24"	1112 kg 2451 lbs.	●	●
	0.93 m ³	1.21 yd ³	4	762 mm	30"	1294 kg 2853 lbs.	●	●
	1.18 m ³	1.54 yd ³	4	914 mm	36"	1437 kg 3167 lbs.	●	●
	1.44 m ³	1.88 yd ³	5	1067 mm	42"	1607 kg 3543 lbs.	●	○
	1.70 m ³	2.22 yd ³	5	1219 mm	48"	1750 kg 3857 lbs.	○	□
	1.96 m ³	2.56 yd ³	6	1372 mm	54"	1921 kg 4236 lbs.	□	⊙
Komatsu HPX	0.68 m ³	0.89 yd ³	3	610 mm	24"	1239 kg 2731 lbs.	●	●
	0.93 m ³	1.21 yd ³	4	762 mm	30"	1421 kg 3133 lbs.	●	●
	1.18 m ³	1.54 yd ³	4	914 mm	36"	1564 kg 3447 lbs.	●	●
	1.44 m ³	1.88 yd ³	5	1067 mm	42"	1734 kg 3823 lbs.	●	○
	1.70 m ³	2.22 yd ³	5	1219 mm	48"	1877 kg 4137 lbs.	○	□
	1.96 m ³	2.56 yd ³	6	1372 mm	54"	2048 kg 4516 lbs.	□	⊙

For best semi-automatic machine control performance, observe maximum attachment weights:

● 2500 kg 5,511 lbs. maximum for 3,185 mm 10' 5" standard arm assembly

● 2350 kg 5,180 lbs. maximum for 4,020 mm 13' 2" standard arm assembly

Exceeding recommended attachment weights may negatively impact performance and accuracy of semi-automatic function.

● - Used with material weights up to 3,500 lbs./yd³ - Quarry/rock/high abrasion applications ○ - Used with material weights up to 2,000 lbs./yd³ - Light materials applications

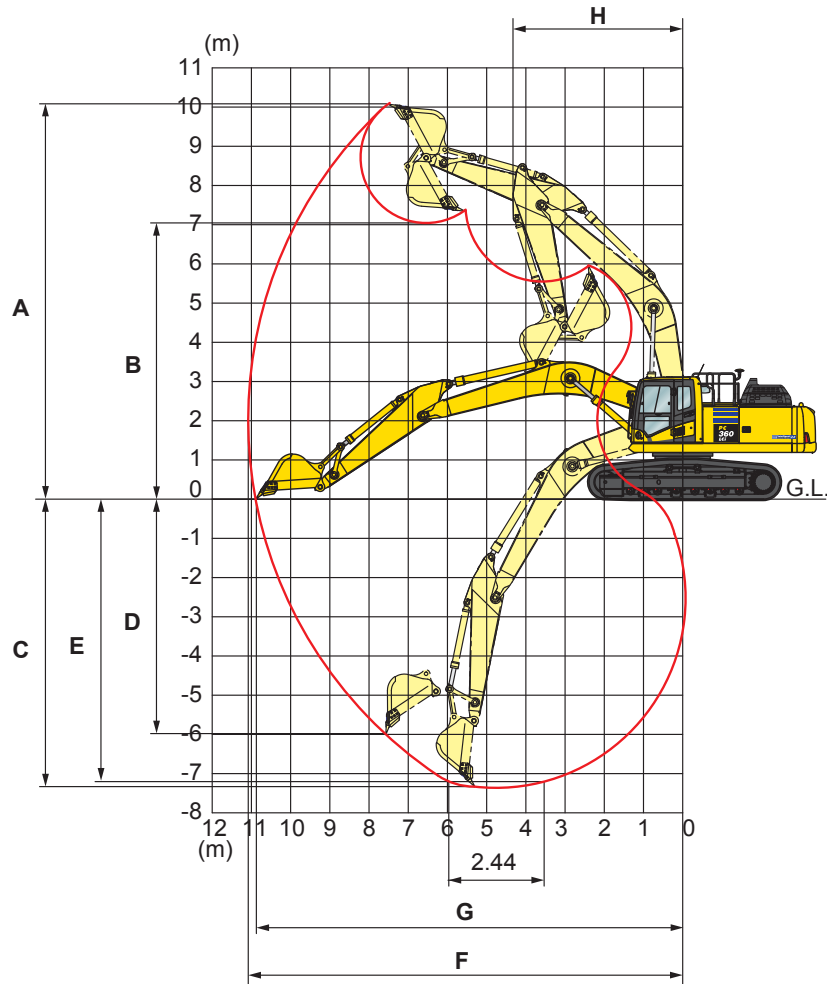
□ - Used with material weights up to 2,500 lbs./yd³ - General construction

X - Not useable

○ - Used with material weights up to 3,000 lbs./yd³ - Tough digging applications

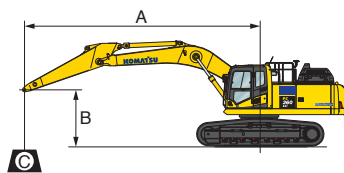
PC360LC-11/PC360LCi-11

Working range



	Arm Length	3185 mm	10'5"	4020 mm	13'2"
A	Max. digging height	10,210 mm	33'6"	10,550 mm	34'7"
B	Max. dumping height	7,110 mm	23'4"	7,490 mm	24'7"
C	Max. digging depth	7,280 mm	23'11"	8,110 mm	26'7"
D	Max. vertical wall digging depth	6,480 mm	21'3"	7,280 mm	23'11"
E	Max. digging depth for 8' level bottom	7,180 mm	23'7"	7,960 mm	26'1"
F	Max. digging reach	11,100 mm	36'5"	11,900 mm	39'1"
G	Max. digging reach at ground level	10,920 mm	35'10"	11,730 mm	38'6"
H	Min. swing radius	4,310 mm	14'2"	4,320 mm	14'2"
SAE rating	Bucket digging force at power max.	200 kN 20,400 kg / 44,970 lbs.		200 kN 20,400 kg / 44,970 lbs.	
	Arm crowd force at power max.	165 kN 16,800 kg / 37,040 lbs.		139 kN 14,200 kg / 31,310 lbs.	
ISO rating	Bucket digging force at power max.	228 kN 23,200 kg / 51,150 lbs.		227 kN 23,100 kg / 50,930 lbs.	
	Arm crowd force at power max.	171 kN 17,400 kg / 38,360 lbs.		144 kN 14,700 kg / 32,410 lbs.	

Lifting capacity with lifting mode



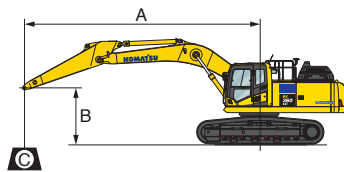
- A: Reach from swing center
- B: Bucket hook height
- C: Lifting capacity
- Cf: Rating over front
- Cs: Rating over side
- ⊗: Rating at maximum reach

Conditions:

- Boom length: 6,500 mm 21' 3" one-piece boom
- Bucket: None
- Lifting mode: On

Arm: 3,185 mm 10'5" Shoes: 700 mm 28" Unit: kg lbs.

B	A 3.0 m 10'		4.6 m 15'		6.1 m 20'		7.6 m 25'		9.1 m 30'		MAX ⊗	
	Cf	Cs	Cf	Cs	Cf	Cs	Cf	Cs	Cf	Cs	Cf	Cs
7.6 m 25'											* 7250	* 7250
											* 15980	* 15980
6.1 m 20'							* 8890	7530			* 7050	6390
							* 19590	16600			* 15540	14080
4.6 m 15'					* 10740	10170	* 9370	7370			* 7100	2690
					* 23670	22420	* 20650	16240			* 15650	5930
3.0 m 10'			* 16210	14500	* 12090	9710	* 10030	7140	8160	5520	* 7380	5340
			* 35730	31960	* 26650	21400	* 22110	15740	17980	12160	* 16270	11770
1.5 m 5'			* 18180	13690	* 13220	9290	10410	6910	8050	5410	7740	5210
			* 40070	30180	* 29140	20480	22950	15230	17740	11920	17060	11480
0 m 0'			* 18550	13330	* 13740	9010	10230	6750	7960	5340	7910	5300
			* 40890	29380	* 30290	19860	22550	14880	17540	11770	17430	11680
-1.5 m -5'	* 13710	* 13710	* 17720	13260	* 13480	8900	10140	6670			8480	5660
	* 30220	* 30220	* 39060	29230	* 29710	19620	22350	14700			18690	12470
-3.0 m -10'	* 20540	* 20540	* 15850	13360	* 12300	8930	* 9440	6720			* 8870	6430
	* 45280	* 45280	* 34940	29450	* 27110	19680	* 20810	14810			* 19550	14170
-4.6 m -15'	* 15670	* 15670	* 12560	* 12560	* 9590	9130					* 8350	8170
	* 34540	* 34540	* 27690	* 27690	* 21140	20120					* 18400	18010



- A: Reach from swing center
- B: Bucket hook height
- C: Lifting capacity
- Cf: Rating over front
- Cs: Rating over side
- ⊗: Rating at maximum reach

Conditions:

- Boom length: 6,500 mm 21' 3" one-piece boom
- Bucket: None
- Lifting mode: On

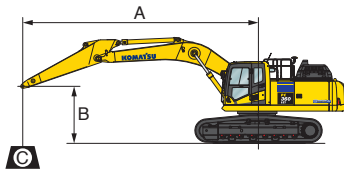
Arm: 3,185 mm 10'5" Shoes: 800 mm 31.5" Unit: kg lbs.

B	A 3.0 m 10'		4.6 m 15'		6.1 m 20'		7.6 m 25'		9.1 m 30'		MAX ⊗	
	Cf	Cs	Cf	Cs	Cf	Cs	Cf	Cs	Cf	Cs	Cf	Cs
7.6 m 25'											* 7250	* 7250
											* 15900	* 15900
6.1 m 20'							* 8890	7600			* 7050	6440
							* 19600	16700			* 15500	14200
4.6 m 15'					* 10740	10260	* 9370	7430			* 7100	5750
					* 23600	22600	* 20600	16300			* 15600	12600
3.0 m 10'			* 16210	14630	* 12090	9790	* 10030	7200	8240	5570	* 7380	5390
			* 35700	32200	* 26600	21500	* 22100	15800	18100	12200	* 16200	11800
1.5 m 5'			* 18180	13820	* 13220	9370	10510	6980	8120	5460	7820	5260
			* 40000	30400	* 29100	20600	23100	15300	17900	12000	17200	11600
0 m 0'			* 18550	13460	* 13740	9100	10330	6810	8040	5390	7990	5360
			* 40900	29600	* 30200	20000	22700	15000	17700	11800	17600	11800
-1.5 m -5'	* 13710	* 13710	* 17720	13380	* 13480	8980	10240	6730			8570	5710
	* 30200	* 30200	* 39000	29500	* 29700	19800	22500	14800			18800	12600
-3.0 m -10'	* 20540	* 20540	* 15850	13490	* 12300	9010	* 9440	6780			* 8870	6490
	* 45200	* 45200	* 34900	29700	* 27100	19800	* 20800	14900			* 19500	14300
-4.6 m -15'	* 15670	* 15670	* 12560	* 12560	* 9590	9210					* 8350	8250
	* 34500	* 34500	* 27600	* 27600	* 21100	20300					* 18400	18100

*Asterisk indicates load is limited by hydraulic capacity rather than tipping. Ratings are based on ISO standard No. 10567. Rated load capacity does not exceed 87% of hydraulic lift capacity or 75% of tipping load. Total weight of bucket and/or installed attachments must be deducted from the capacities shown above. Lift capacity chart is based on machine located on a solid, level and uniform surface. Load ratings are at the arm bucket pin location, use of any attachment point in a different location to handle objects could affect excavator lift performance.

PC360LC-11/PC360LCi-11

Lifting capacity with lifting mode

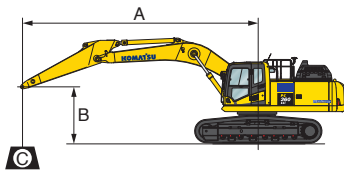


- A: Reach from swing center
- B: Bucket hook height
- C: Lifting capacity
- Cf: Rating over front
- Cs: Rating over side
- ⊗: Rating at maximum reach

- Conditions:
- Boom length: 6,500 mm 21' 3" one-piece boom
 - Bucket: None
 - Lifting mode: On

Arm: 3,185 mm 10'5" Shoes: 850 mm 33.5" Unit: kg lbs.

B	A 3.0 m 10'		4.6 m 15'		6.1 m 20'		7.6 m 25'		9.1 m 30'		MAX ⊗	
	Cf	Cs	Cf	Cs	Cf	Cs	Cf	Cs	Cf	Cs	Cf	Cs
7.6 m 25'											* 7250	* 7250
											* 15900	* 15900
6.1 m 20'							* 8890	7630			* 7050	6470
							* 19600	16800			* 15500	14200
4.6 m 15'					* 10740	10300	* 9370	7460			* 7100	5770
					* 23600	22700	* 20600	16400			* 15600	12700
3.0 m 10'			* 16210	14690	* 12090	9830	* 10030	7230	8280	5590	* 7380	5410
			* 35700	32300	* 26600	21600	* 22100	15900	18200	12300	* 16200	11900
1.5 m 5'			* 18180	13880	* 13220	9410	* 10560	7010	8160	5490	* 7850	5290
			* 40000	30600	* 29100	20700	* 23200	15400	18000	12100	* 17300	11600
0 m 0'			* 18550	13520	* 13740	9140	* 10380	6840	8080	5410	* 8030	5380
			* 40900	29800	* 30200	20100	* 22800	15000	17800	11900	* 17700	11800
-1.5 m -5'	* 13710	* 13710	* 17720	13450	* 13480	9020	10290	6770			8610	5740
	* 30200	* 30200	* 39000	29600	* 29700	19900	22700	14900			18900	12600
-3.0 m -10'	* 20540	* 20540	* 15850	13550	* 12300	9050	* 9440	6810			* 8870	6520
	* 45200	* 45200	* 34900	29800	* 27100	19900	* 20800	15000			* 19500	14300
-4.6 m -15'	* 15670	* 15670	* 12560	12560	* 9590	9260					* 8350	8290
	* 34500	* 34500	* 27600	27600	* 21100	20400					* 18400	18200



- A: Reach from swing center
- B: Bucket hook height
- C: Lifting capacity
- Cf: Rating over front
- Cs: Rating over side
- ⊗: Rating at maximum reach

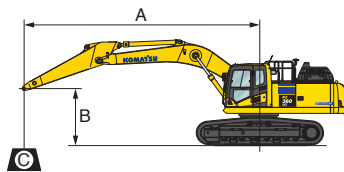
- Conditions:
- Boom length: 6,500 mm 21' 3" one-piece boom
 - Bucket: None
 - Lifting mode: On

Arm: 4,020 mm 13'2" Shoes: 700 mm 28" Unit: kg lbs.

B	A 3.0 m 10'		4.6 m 15'		6.1 m 20'		7.6 m 25'		9.1 m 30'		MAX ⊗	
	Cf	Cs	Cf	Cs	Cf	Cs	Cf	Cs	Cf	Cs	Cf	Cs
7.6 m 25'							* 7750	7710			* 5610	* 5610
							* 17080	16990			* 12360	* 12360
6.1 m 20'					* 7950	7620	* 6550	5690	* 5460	5460	* 12030	12030
					* 17520	16790	* 14440	12540	* 12030	12030		
4.6 m 15'					* 8520	7410	* 7870	5610	* 5470	4940		
					* 18780	16330	* 17350	12360	* 12050	10890		
3.0 m 10'			* 14340	* 14340	* 11020	9790	* 9280	7130	8130	5470	* 5640	4650
			* 31610	* 31610	* 24290	21580	* 20450	15710	17920	12050	* 12430	10250
1.5 m 5'			* 16890	13770	* 12370	9260	* 10010	6840	7970	5320	* 5950	4540
			* 37230	30350	* 27270	20410	* 22060	15070	17570	11720	* 13110	10000
0 m 0'	* 8320	* 8320	* 18090	13140	* 13230	8870	10100	6610	7830	5190	* 6480	4600
	* 18340	* 18340	* 39880	28960	* 29160	19550	22260	14570	17260	11440	* 14280	10140
-1.5 m -5'	* 12420	* 12420	* 17980	12900	* 13400	8660	9950	6470	7760	5130	* 7290	4840
	* 27380	* 27380	* 39630	28430	* 29540	19090	21930	14260	17100	11300	* 16070	10670
-3.0 m -10'	* 17840	* 17840	* 16780	12900	* 12760	8610	9920	6440			* 8040	5360
	* 39330	* 39330	* 36990	28430	* 28130	18980	21860	14190			* 17720	11810
-4.6 m -15'	* 19190	* 19190	* 14360	13100	* 11040	8730	* 8190	6570			* 7850	6420
	* 42300	* 42300	* 31650	28880	* 24330	19240	* 18050	14480			* 17300	14150
-6.1 m -20'	* 12720	* 12720	* 9970	* 9970	* 7010	* 7010					* 6940	* 6940
	* 28040	* 28040	* 21980	* 21980	* 15450	* 15450					* 15300	* 15300

*Asterisk indicates load is limited by hydraulic capacity rather than tipping. Ratings are based on ISO standard No. 10567. Rated load capacity does not exceed 87% of hydraulic lift capacity or 75% of tipping load. Total weight of bucket and/or installed attachments must be deducted from the capacities shown above. Lift capacity chart is based on machine located on a solid, level and uniform surface. Load ratings are at the arm bucket pin location, use of any attachment point in a different location to handle objects could affect excavator lift performance.

Lifting capacity with lifting mode



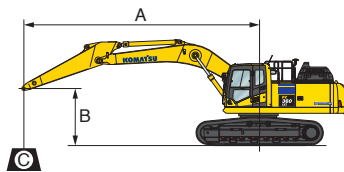
- A: Reach from swing center
- B: Bucket hook height
- C: Lifting capacity
- Cf: Rating over front
- Cs: Rating over side
- ⊗: Rating at maximum reach

Conditions:

- Boom length: 6,500 mm 21' 3" one-piece boom
- Bucket: None
- Lifting mode: On

Arm: 4,020 mm 13'2" Shoes: 800 mm 31.5" Unit: kg lbs.

B	A 3.0 m 10'		4.6 m 15'		6.1 m 20'		7.6 m 25'		9.1 m 30'		MAX ⊗	
	Cf	Cs	Cf	Cs	Cf	Cs	Cf	Cs	Cf	Cs	Cf	Cs
7.6 m							* 7750	* 7750			* 5610	* 5610
25'							* 17000	* 17000			* 12300	* 12300
6.1 m							* 7950	7680	* 6550	5740	* 5460	* 5460
20'							* 17500	16900	* 14400	12600	* 12000	* 12000
4.6 m							* 8520	7470	* 7870	5660	* 5470	4980
15'							* 18700	16400	* 17300	12400	* 12000	10900
3.0 m			* 14340	* 14340	* 11020	9870	* 9280	7190	8210	5520	* 5640	4700
10'			* 31600	* 31600	* 24300	21700	* 20400	15800	18100	12100	* 12400	10300
1.5 m			* 16890	13900	* 12370	9350	* 10010	6900	8040	5370	* 5950	4590
5'			* 37200	30600	* 27200	20600	* 22000	15200	17700	11800	* 13100	10100
0 m	* 8320	* 8320	* 18090	13270	* 13230	8960	10200	6670	7910	5240	* 6480	4640
0'	* 18300	* 18300	* 39800	29200	* 29100	19700	22500	14700	17400	11500	* 14200	10200
-1.5 m	* 12420	12420	* 17980	13030	* 13400	8740	10050	6530	7840	5180	* 7330	4890
-5'	* 27300	27300	* 39600	28700	* 29500	19200	22100	14400	17200	11400	* 16100	10700
-3.0 m	* 17840	* 17840	* 16780	13030	* 12760	8700	* 10020	6510			* 8040	5410
-10'	* 39300	* 39300	* 37000	28700	* 28100	19100	* 22000	14300			* 17700	11900
-4.6 m	* 19190	* 19190	* 14360	13230	* 11040	8810	* 8190	6640			* 7850	6480
-15'	* 42300	* 42300	* 31600	29100	* 24300	19400	* 18000	14600			* 17300	14300



- A: Reach from swing center
- B: Bucket hook height
- C: Lifting capacity
- Cf: Rating over front
- Cs: Rating over side
- ⊗: Rating at maximum reach

Conditions:

- Boom length: 6,500 mm 21' 3" one-piece boom
- Bucket: None
- Lifting mode: On

Arm: 4,020 mm 13'2" Shoes: 850 mm 33.5" Unit: kg lbs.

B	A 3.0 m 10'		4.6 m 15'		6.1 m 20'		7.6 m 25'		9.1 m 30'		MAX ⊗	
	Cf	Cs	Cf	Cs	Cf	Cs	Cf	Cs	Cf	Cs	Cf	Cs
7.6 m							* 7750	* 7750			* 5610	* 5610
25'							* 17000	* 17000			* 12300	* 12300
6.1 m							* 7950	7720	* 6550	5770	* 5460	* 5460
20'							* 17500	17000	* 14400	12700	* 12000	* 12000
4.6 m							* 8520	7500	* 7870	5690	* 5470	5010
15'							* 18700	16500	* 17300	12500	* 12000	11000
3.0 m			* 14340	* 14340	* 11020	9910	* 9280	7220	* 8220	5550	* 5640	4720
10'			* 31600	* 31600	* 24300	21800	* 20400	15900	* 18100	12200	* 12400	10400
1.5 m			* 16890	13960	* 12370	9390	* 10010	6940	8080	5400	* 5950	4610
5'			* 37200	30700	* 27200	20700	* 22000	15300	17800	11900	* 13100	10100
0 m	* 8320	* 8320	* 18090	13330	* 13230	9000	10250	6710	7950	5270	* 6480	4660
0'	* 18300	* 18300	* 39800	29400	* 29100	19800	22600	14700	17500	11600	* 14200	10200
-1.5 m	* 12420	* 12420	* 17980	13090	* 13400	8790	10100	6570	7880	5200	* 7330	4910
-5'	* 27300	* 27300	* 39600	28800	* 29500	19300	22200	14400	17300	11400	* 16100	10800
-3.0 m	* 17840	* 17840	* 16780	13090	* 12760	8740	10020	6540			* 8040	5440
-10'	* 39300	* 39300	* 37000	28800	* 28100	19200	22000	14400			* 17700	11900
-4.6 m	* 19190	* 19190	* 14360	13290	* 11040	8860	8190	6670			* 7850	6520
-15'	* 42300	* 42300	* 31600	29300	* 24300	19500	18000	14700			* 17300	14300

*Asterisk indicates load is limited by hydraulic capacity rather than tipping. Ratings are based on ISO standard No. 10567. Rated load capacity does not exceed 87% of hydraulic lift capacity or 75% of tipping load. Total weight of bucket and/or installed attachments must be deducted from the capacities shown above. Lift capacity chart is based on machine located on a solid, level and uniform surface. Load ratings are at the arm bucket pin location, use of any attachment point in a different location to handle objects could affect excavator lift performance.

Equipment

Cab	PC360LC	PC360LCi
ROPS cab (ISO12117-2)	●	●
High back air suspension seat, with heat	●	●
Operator Protective Guard (OPG) Level 1 top guard	●	●
Large LCD high resolution color monitor	●	●
Automatic climate control	●	●
Retractable seat belt (76mm width) with indicator	●	●
12V accessory outlet	●	●
24V accessory outlet	●	●
Rearview mirrors, right hand and left hand side	●	●
Rearview monitoring system (1 camera)	●	●
Travel alarm	●	●
Proportional joystick control levers	○	●
Operator identification system	●	●
Hydraulic lock lever	●	●
Skylight	●	●
Sunvisor	○	○
Rainvisor	○	○
Working lights, two additional cab mounted	○	○
Straight travel pedal	□	□
Engine	PC360LC	PC360LCi
Komatsu SAA6D114E-6 Tier 4 Final	●	●
Dry type air cleaner, double element	●	●
Fuel pre-filter with water separator	●	●
Fuel high efficiency filter	●	●
Automatic engine warm up system	●	●
Programmable auto-idle shut down	●	●
Overheat prevention system	●	●
Turbocharger protection system	●	●
Hydraulic controls	PC360LC	PC360LCi
Pattern change control valve (ISO to BH control)	●	●
Working mode selection system (6 modes)	●	●
Dual pump, Closed Center Load Sensing System (CLSS)	●	●
Auto-deceleration system	●	●
Power max system	●	●
Boom and arm holding valves	●	●
Two boom pressure mode settings	●	●
One way/two way flow hyd control unit Variable pressure, return filter, & accumulator	○	-
One way/two way flow hyd control unit Variable pressure and flow, return filter, & accumulator	-	○
Technology	PC360LC	PC360LCi
Komtrax level 5.0	●	●
Intelligent Machine Control	-	●
264mm (10.4") IMC color monitor with USB	-	●
Multi-band UHF/915SS radio	-	●
Auto grade assist	-	●
Auto stop control	-	●
Minimum distance control	-	●
Bucket angle hold control	-	●
Provision for auto tilt control*	-	●
Komvision (4 camera system)	-	○□
IMU for auto tilt control	-	□
In field design - 2D simple surface	-	●

Electrical system	PC360LC	PC360LCi
Batteries, large capacity (2 x 12Volt)	●	●
Battery master disconnect switch with lockout tagout	●	●
Alternator (90Amp, 24Volt)	●	●
Starter motor (11kW)	●	●
Secondary engine shut off switch	●	●
Working lights (1 Front RH side / 1 boom LH side)	●	●

Booms and arms	PC360LC	PC360LCi
6500mm (21'3") HD boom assembly	●	●
6500mm (21'3") HD boom assembly with +1 attach piping	○	○
3185mm (10'5") arm assembly	●	●
3185mm (10'5") arm assembly with +1 attach piping	○	○
4020mm (13'2") arm assembly	○	○
4020mm (13'2") arm assembly with +1 attach piping	○	-
Boom foot, boom nose, & arm end steel castings	●	●

Undercarriage and work equipment	PC360LC	PC360LCi
850mm (33.5") triple grouser track shoes	●	●
800mm (31.5") single grouser track shoes	○	○
700mm (28") triple grouser track shoes	○	-
8 track / 2 carrier rollers (each side)	●	●
Hydraulic track adjusters (each side)	●	●
Track guiding guards, center section (each side)	●	●
Track roller guards, full length (each side)	○	○
Counterweight, 6920kg (15,255lb)	●	●
Counterweight, 7400kg (16,315lb)**	○	-
Object handling H-link	●	●

Guards and covers	PC360LC	PC360LCi
Revolving frame deck guards	●	●
Revolving frame undercovers	●	●
Track frame swivel guard	●	●
Pump / engine room partition	●	●
Turbocharger exhaust manifold cover	●	●
Dust net for radiator and hydraulic oil cooler	●	●
Slip resistant foot plates	●	●
Tool free access to engine and aftertreatment	●	●
Left and right side hand rails	●	●
Cab full front guard, OPG Level 1	○	○
Cab full front guard, OPG Level 2	○	○
Cab top guard, OPG Level 2	○	○
Revolving frame undercovers - heavy duty	○	○
Revolving frame undercovers - severe duty	○	○

Drive and brake system	PC360LC	PC360LCi
Three speed travel with auto shift	●	●
Double reduction type final drive	●	●
Triple labyrinth final drive seals	●	●

*IMU for auto-tilt control required for operation

**With revolving frame reinforcements, Only available with super long fronts

For a complete list of available attachments, please contact your local Komatsu distributor.

Standard equipment	●
Optional equipment	○
Optional (field install)	□

Product designs, specifications and/or data in this document are provided for informational purposes only and are not warranties of any kind. Product designs and/or specifications may be changed at any time without notice. The only warranties that apply to sales of products and services are Komatsu's standard written warranties, which will be furnished upon request.

Komatsu and other trademarks and service marks used herein are the property of Komatsu Ltd., Komatsu America Corp., Komatsu Mining Corp., or one of their affiliates, or the respective owners or licensees.

KOMATSU

komatsuamerica.com

