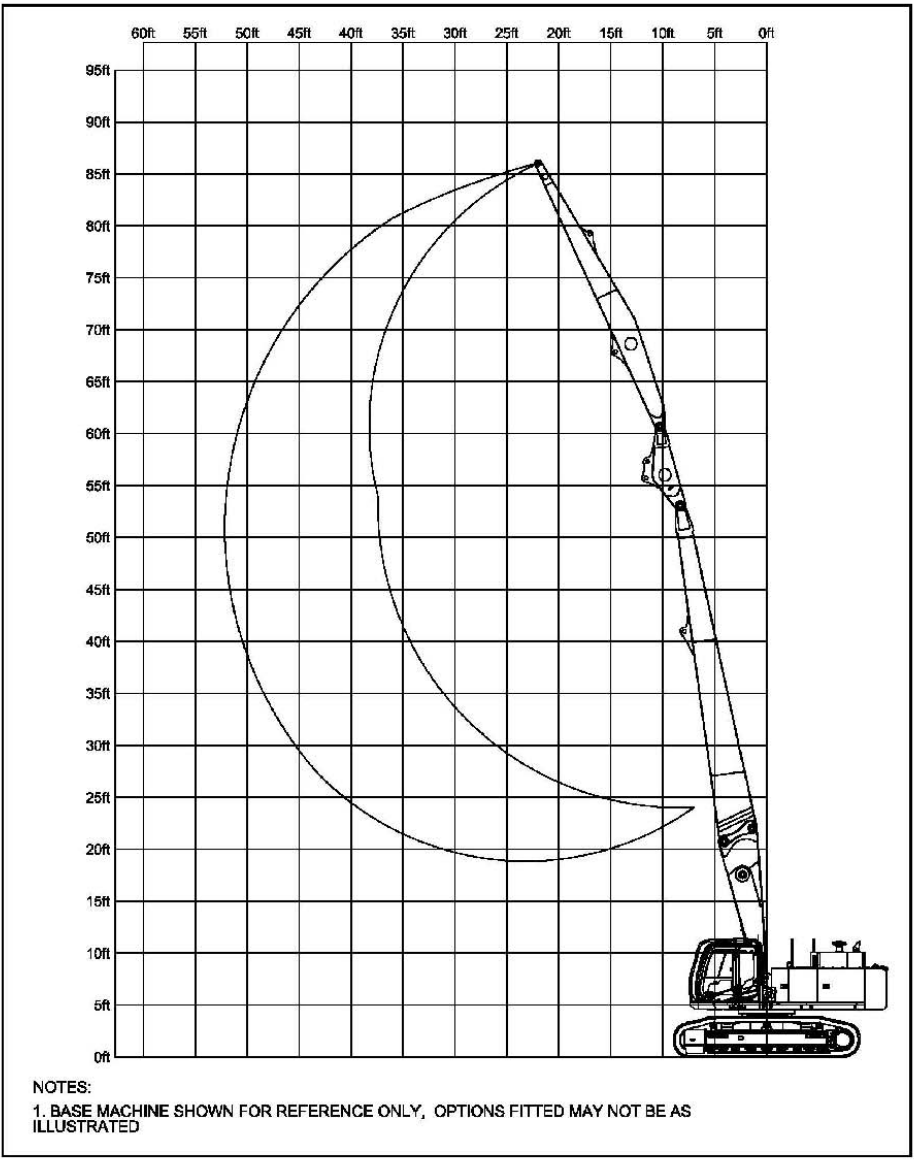


8 7 6 5 4 3 2 1



NOTES:
 1. BASE MACHINE SHOWN FOR REFERENCE ONLY, OPTIONS FITTED MAY NOT BE AS ILLUSTRATED

PROPRIETARY AND CONFIDENTIAL
 THE INFORMATION CONTAINED IN THIS DRAWING IS THE SOLE PROPERTY OF COMPANY WRENCH LTD. ANY REPRODUCTION IN PART OR AS A WHOLE WITHOUT THE WRITTEN PERMISSION OF COMPANY WRENCH LTD IS PROHIBITED.

REVISIONS				
ZONE	REV.	DESCRIPTION	DATE	APPROVED

MATERIAL:		



4805 SCOOPY LANE NW
 CARROLL, OHIO 43112
 740-654-5304

The Cutting Edge of Customer Service

UNLESS OTHERWISE SPECIFIED DIMENSION TOLERANCES ARE AS FOLLOWS:

DECIMAL: ±0.015"
 FRACTIONAL: ±1/16"
 ANGULAR: ±1°

TITLE: **PC450LC-8 - 86' HIGH REACH RANGE**

WEIGHT:

SCALE: 1:1
 SHEET 1 OF 1

SIZE **B**
 DWG./PART NO.

0M11502-1

8 7 6 5 4 3 2 1

LIFTING CAPACITIES

DOC No: 13040141

ISS: 1 - 28/07/14

MACHINE : PC450LC-8
EQUIPMENT : 85' HIGH REACH

REVISIONS

ZONE	REV.	DESCRIPTION	DATE	APPROVED
------	------	-------------	------	----------

WARNING : DO NOT OPERATE MACHINE OVER SIDE. OPERATE OVER FRONT ONLY WITH DRIVES TO THE REAR OF THE MACHINE.

LIFT CAPACITIES CALCULATED AT ATTACHMENT PIVOT POINT ON STICK (lbs)
NO ATTACHMENT ON STICK. ATTACHMENT WEIGHT MUST BE SUBTRACTED.

REACH											HEIGHT
55ft	50ft	45ft	40ft	35ft	30ft	25ft	20ft	15ft	10ft		
											100ft
											95ft
											90ft
						20,768*					85ft
				14,491*							80ft
			12,352*	14,345*							75ft
		10,714*	12,306*								70ft
		10,675*	12,267*								65ft
	9,202*	10,655*	12,247*								60ft
	9,204*	10,648*	12,348*								55ft
	9,154*	10,662*	12,172*								50ft
	9,087*	10,595*	12,101*								45ft
	9,052*	10,432*	11,945*	13,905*							40ft
		10,313*	11,901*	13,724*							35ft
		10,337*	11,890*	13,841*	16,561*						30ft
			11,984*	13,938*	16,700*	20,470*	26,070*				25ft
					16,848*	20,715*	26,625*	36,826*			20ft
						17,042*					15ft
						16,969*					10ft
						16,612*					5ft
						15,975*					0ft

THE FOLLOWING NOTES PERTAIN TO THIS MACHINE EQUIPPED WITH 10,500# ADDITIONAL COUNTER WEIGHT.

- DO NOT ATTEMPT TO LIFT OR HOLD ANY LOAD THAT EXCEEDS THESE RATED VALUES.
- WHEN WORKING, THE BOOM MUST BE IN THE FULLY UPRIGHT POSITION. MAXIMUM FORWARD TILT OF THE BOOM IS 10°.
- MACHINE MUST NEVER BE OPERATED OVER THE SIDE.
- THE OPERATOR SHOULD BE FULLY ACQUAINTED WITH MACHINE OPERATION BEFORE OPERATING THE MACHINE.
- LIFTING CAPACITIES ASSUME MACHINE STANDING ON LEVEL, FIRM AND UNIFORM SUPPORTING SURFACE. OPERATOR MUST MAKE ALLOWANCE FOR JOB CONDITIONS SUCH AS SOFT UNEVEN GROUND, OUT OF LEVEL CONDITIONS, SIDE LOADS, SUDDEN STOPPING OF LOADS, HAZARDOUS CONDITIONS, INEXPERIENCED PERSONNEL, ECT.
- THE ABOVE THEORETICAL RATINGS ARE BASED ON CALCULATIONS DERIVED FROM STANDARD O.E.M LIFT CHARTS BASED ON SAE STANDARD No J1097. THEY DO NOT EXCEED 87% HYDRAULIC LIFTING CAPACITY OR 75% OF TIPPING CAPACITY. RATED LOADS MARKED WITH A (*) ARE LIMITED HYDRAULICALLY.
- WHEN TRAVELING THE MACHINE IN EITHER FORWARD OR REVERSE DIRECTIONS TO THE JOB SITE (MORE THEN 20ft), WITH THE BOOM STRAIGHT OVER THE FRONT OR REAR OF THE MACHINE, THE BOOM SHOULD BE POSITIONED SUCH THAT THE TIP OF THE TOOL IS APPROX 5ft ABOVE THE GROUND, WITH THE MID LINK FULLY RETRACTED, AND OUTER ARM AND TOOL PERPENDICULAR TO THE GROUND. TRAVEL CONTROL SHOULD BE SET TO LOW SPEED AND ENGINE RPM AT MID RANGE, AT THE JOB SITE, WITH THE BOOM IN WORKING POSITION (DRIVE SPOCKETS TO THE REAR, BOOM OVER THE FRONT) THE MACHINE MAY BE MOVED UP TO 20ft FORWARD OR REVERSE, TRAVEL AT LOW SPEED SETTING, ENGINE RPM IN MID RANGE, IN ORDER TO MOVE INTO THE WORKING POSITION, PROVIDED THE GROUND IS FIRM AND LEVEL.
- WHEN SWINGING THE MACHINE 360°, THE BOOM SHOULD BE IN THE FULLY UPRIGHT POSITION, WITH THE MID LINK FULLY RETRACTED, AND OUTER ARM AND TOOL PERPENDICULAR TO THE GROUND.
- WHEN SHUTTING DOWN THE MACHINE FOR A PERIOD OF TIME, THE MID LINK SHOULD BE FULLY RETRACTED, AND THE BOOM LOWERED TO REST THE OUTER ARM ON THE GROUND, WITH THE OUTER ARM AND TOOL POSITIONED PARALLEL TO THE GROUND.
- DO NOT BOOM DOWN WITH TOOL ON THE GROUND AND FRONT FULLY RETRACTED, DOING SO MAY CAUSE DAMAGE TO THE MACHINE.

PROPRIETARY AND CONFIDENTIAL
THE INFORMATION CONTAINED IN THIS DRAWING IS THE SOLE PROPERTY OF COMPANY WRENCH LTD. ANY REPRODUCTION IN PART OR AS A WHOLE WITHOUT THE WRITTEN PERMISSION OF COMPANY WRENCH LTD IS PROHIBITED.

MATERIAL:

	NAME	DATE
DRAWN	ET	7/28/14
APPROVED		
MFG. APPR.		

UNLESS OTHERWISE SPECIFIED DIMENSION TOLERANCES ARE AS FOLLOWS:

DECIMAL: ±0.015"
FRACTIONAL: ±1/16"
ANGULAR: ±1°

WEIGHT:



4805 SCOOPY LANE NW
CARROLL, OHIO 43112
740-654-5304

The Cutting Edge of Customer Service

TITLE:

PC450LC-8 - 86' HIGH REACH LIFT CHART

SCALE: 1:1

SIZE

B

DWG./PART NO.

0M11502-2

SHEET 1 OF 1

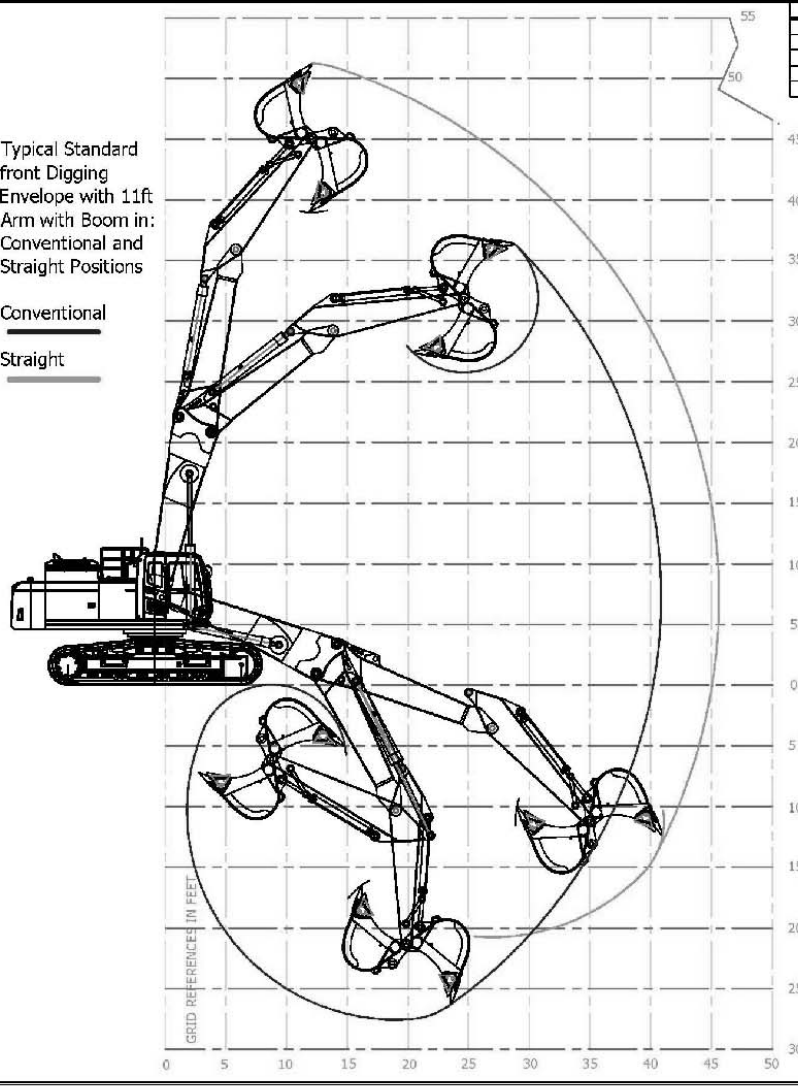
8 7 6 5 4 3 2 1

REVISIONS

ZONE	REV.	DESCRIPTION	DATE	APPROVED

Typical Standard front Digging Envelope with 11ft Arm with Boom in: Conventional and Straight Positions

Conventional
Straight



REVISIONS	

MATERIAL:		
	NAME	DATE
DRAWN	ET	1/6/12
APPROVED		
MFG. APPR.		



4805 SCOOPY LANE NW
CARROLL, OHIO 43112
740-654-5304

The Cutting Edge of Customer Service

PROPRIETARY AND CONFIDENTIAL
THE INFORMATION CONTAINED IN THIS DRAWING IS THE SOLE PROPERTY OF COMPANY WRENCH LTD. ANY REPRODUCTION IN PART OR AS A WHOLE WITHOUT THE WRITTEN PERMISSION OF COMPANY WRENCH LTD IS PROHIBITED.

UNLESS OTHERWISE SPECIFIED DIMENSION TOLERANCES ARE AS FOLLOWS:

DECIMAL: ±0.015"
FRACTIONAL: ±1/16"
ANGULAR: ±1°

TITLE: **PC450LC-8 - STD. & STR. RANGE**

SCALE: 1:1	SIZE B	DWG./PART NO. 0M11502-3
SHEET 1 OF 1		

8 7 6 5 4 3 2 1