

SY335C_{LC} Excavator



KEY FEATURES

- Newly designed SANY cab has excellent space, wide visibility and easy access to controls to maximize operator comfort
- Cummins Tier 4i QSL 9 engine
- Enhanced engine/hydraulic management system provides excellent control and high productivity
- Standard features include two-way auxiliary hydraulics and a pattern-control change valve

SPECIFICATIONS

Gross Power

290 hp / 216 kW

Operating Weight

82,371 lb / 37,363 kg

Dig Depth

24' 2" / 7377 mm

Bucket Breakout

40,016 lbf / 178 kN

SANY America Inc.

318 Cooper Circle, Peachtree City, GA 30269

Tel: 678-251-2810 | Fax: 770-632-7820

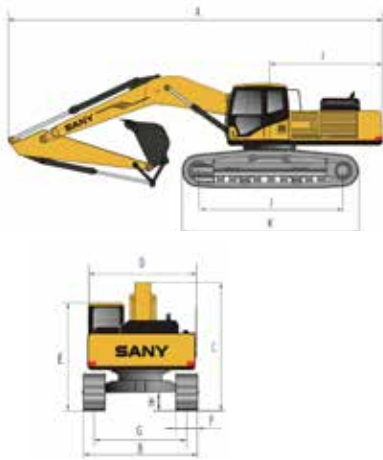
www.sanyamerica.com



SANY AMERICA

SY335CLC Dimensions & Specifications

Overall Dimensions



SY335C Lift Capacity lb (kg)

| LPH ft (m) | LPR ft (m) | | | | | | | | | | | | Lift Capacity Max Radius | | Radius ft (m) |
|-----------------|--------------------|--------------------|--------------------|--------------------|--------------------|--------------------|--------------------|------------------|-------------------|------------------|-------------------|-------------------|--------------------------|--|------------------|
| | 9.8 (3.0) | | 14.8 (4.5) | | 19.7 (6.0) | | 24.6 (7.5) | | 29.5 (9.0) | | End | Side | | | |
| | End | Side | End | Side | End | Side | End | Side | End | Side | | | | | |
| 24.6 (7.5) | - | - | - | - | - | - | *18,129 (8223) | 15,161 (6877) | - | - | *18,146 (8231) | 14,617 (6630) | 25.1 (7.66) | | |
| 19.7 (6.0) | - | - | - | - | - | - | *18,234 (8275) | 15,071 (6836) | - | - | *17,626 (7995) | 12,189 (5529) | 28.1 (8.55) | | |
| 14.8 (4.5) | - | - | - | - | *22,309 (10119) | *22,309 (10119) | *19,273 (8742) | 14,663 (6651) | *17,505 (7940) | 11,109 (5039) | *17,410 (7897) | 10,884 (4937) | 29.9 (9.11) | | |
| 9.8 (3.0) | - | - | *33,729 (15299) | 28,636 (12989) | *25,009 (11344) | 19,229 (8722) | *20,604 (9346) | 14,121 (6405) | *17,948 (8141) | 10,884 (4937) | *17,392 (7889) | 10,199 (4626) | 30.8 (9.40) | | |
| 4.9 (1.5) | - | - | *37,397 (16963) | 26,832 (12171) | *27,152 (12316) | 18,274 (8289) | *21,707 (9846) | 13,603 (6170) | *18,294 (8298) | 10,631 (4822) | *17,450 (7915) | 9,954 (4515) | 31 (9.44) | | |
| 0.0 | - | - | *39,249 (17083) | 26,070 (11825) | *28,003 (12702) | 17,661 (8011) | *22,152 (10048) | 13,223 (5998) | *18,124 (8221) | 10,448 (4739) | *17,509 (7942) | 10,119 (4590) | 30.3 (9.23) | | |
| -4.9 (-1.5) | *28,334 (12852) | *28,334 (12852) | *35,613 (16154) | 25,929 (11761) | *27,196 (12366) | 17,408 (7896) | *21,522 (9762) | 13,049 (5919) | - | - | *17,478 (7928) | 10,774 (4887) | 28.7 (8.76) | | |
| -9.8 (-3.00) | *40,283 (18272) | *40,283 (18272) | *31,581 (14325) | 26,167 (11869) | *24,645 (11179) | 17,434 (7926) | *19,052 (8642) | 13,135 (5958) | - | - | *17,628 (7966) | 12,214 (5540) | 26.2 (7.98) | | |
| -14.8 (-4.5) | *30,426 (13801) | *30,426 (13801) | *24,800 (11249) | *24,800 (11249) | *19,202 (8710) | *19,202 (8710) | - | - | - | - | *15,820 (7176) | *15,820 (7176) | 22.2 (6.78) | | |

Capacities marked with an asterisk (*) are limited by hydraulic capacities. See #1

Overall Dimensions

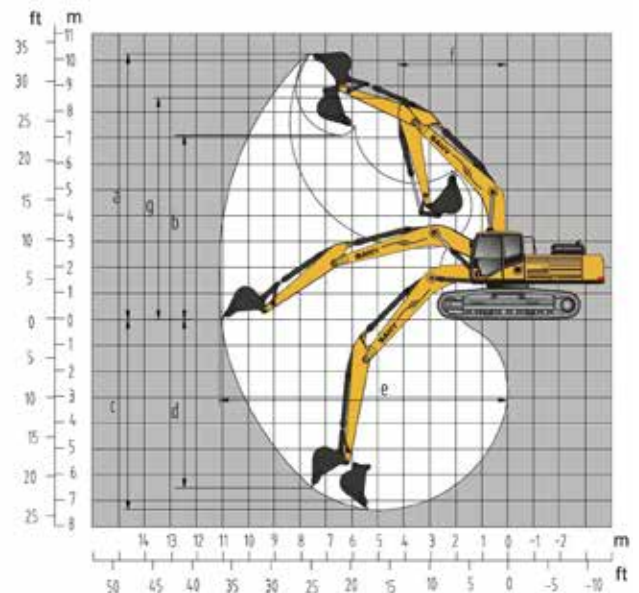
| | U.S. (ft - in) | Metric (mm) |
|------------------------------------------|----------------|-------------|
| A Transport Length | 36' 5" | 11 100 |
| B Transport Width | 11' 2" | 3410 |
| C Transport Height | 11' 6" | 3505 |
| D Upper Width | 9' 10" | 3000 |
| E Cab Height | 10' 8" | 3262 |
| F Std Track Shoe Width | 2' 7" | 800 |
| G Track Gauge | 8' 6" | 2590 |
| H Minimum Ground Clearance | 1' 8" | 541 |
| I Tail Swing Radius | 10' 10" | 3304 |
| J Length Center Idler to Center Sprocket | 13' 7" | 4150 |
| K Track Length (Overall) | 16' 7" | 5080 |
| Boom Length | 21' 4" | 6470 |
| Std Arm Length | 10' 5" | 3187 |

Machine Parameters

| | U.S. | Metric |
|------------------------------------|---------------------|-------------------|
| Operating Weight | 82,371 lb | 37 363 kg |
| Gross Power (ISO 14396 / SAE 1995) | 290 HP | 216 kW |
| Engine Max Torque | 895 lb-ft @ 1500 | 1213 Nm @ 1500 |
| Engine Displacement | 543 in ³ | 8.9 liter |
| Main Pump Flow | 2 x 99 gal/min | 2 x 375 liter/min |
| Swing Speed | 9.8 rpm | |
| Travel Speed | 2.1 / 3.2 mph | 3.4 / 5.1 km/h |
| Draw Bar Pull (Tractive Effort) | 53,055 lbf | 236 kN |
| Max Arm Digging Force | 35,969 lbf | 160 kN |
| Max Bucket Digging Force | 40,016 lbf | 178 kN |
| Number of Upper Rollers | 2 | |
| Number of Lower Rollers | 9 | |
| Fuel Tank Capacity | 137 gal | 520 Liter |
| Hydraulic Tank Capacity | 90 gal | 340 Liter |
| Cooling System Capacity | 12.5 gal | 48 Liter |
| Engine Oil Capacity | 7.67 gal | 29 Liter |
| Ground Pressure (800 mm Shoes) | 7.1 psi | 48.7 kPa |

- Lift capacities shown do not exceed 75% of minimum tipping loads or 87% of hydraulic capacities.
- Lift capacities apply only to the machine as originally manufactured and normally equipped by the manufacturer.
- The total mass of the machine 37363 kg with standard bucket, 800 mm grouser shoes, 6470 mm boom, 3187 mm arm, 6800 kg counterweight, all operating fluids and 75 kg operator.
- Lift capacities as per ISO 10567:2007.
- LPH = Load Point Height from ground. LPR = Load Point Radius from center of swing.

Operating Range



Operating Range

| | U.S. (ft - in) | Metric (mm) |
|--------------------------------------|----------------|-------------|
| a Max Digging Height | 33' 3" | 10 135 |
| b Max Dumping Height | 24' 3" | 7391 |
| c Max Digging Depth | 24' 2" | 7377 |
| d Max Vertical Wall Digging Depth | 23' 1" | 7047 |
| e Max Digging Reach | 36' 5" | 11 103 |
| f Min Swing Radius | 14' 7" | 4462 |
| g Max Height at Minimum Swing Radius | 28' | 8527 |