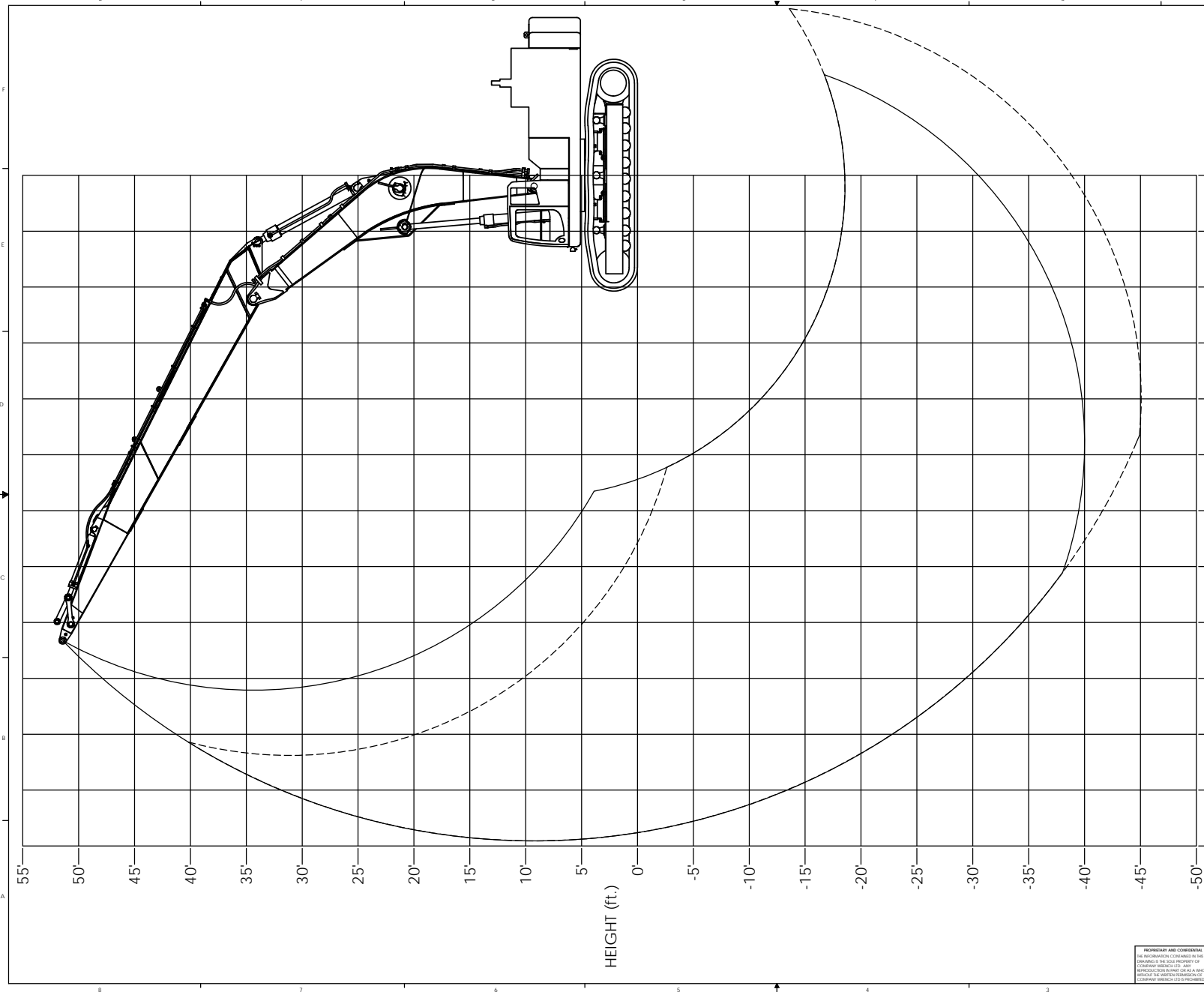


| REVISIONS |      |             |      |          |
|-----------|------|-------------|------|----------|
| ZONE      | REV. | DESCRIPTION | DATE | APPROVED |
|           |      |             |      |          |



CONFIGURATION:  
 27'-1" SK850LC-9 BOOM (WITH DUAL PIN POSITIONS FOR BOOM CYLINDERS)  
 35'-0" STICK WITH PC400 TIP

----- BOOM HOIST CYLINDERS ON UPPER PIVOT  
 \_\_\_\_\_ BOOM HOIST CYLINDERS ON LOWER PIVOT

| MATERIAL: |      |      |
|-----------|------|------|
| QUANTITY  | MARK | SIZE |
|           |      |      |
|           |      |      |
|           |      |      |
|           |      |      |



4805 SCOOPY LANE NW  
 CARROLL, OHIO 43112  
 740-654-5304

*The Cutting Edge of Customer Service*

UNLESS OTHERWISE SPECIFIED  
 DIMENSIONS TO DIMENSION LINES ARE  
 AS FOLLOWS:  
 DECIMAL: 80/100"  
 FRACTIONAL: 1/16"  
 ANGLE: 1°  
 WEIGHT: #

TITLE: SK850LC-9 DUAL PIN BOOM RANGE - 35' ARM, PC400 TIP  
 SCALE: 1:50  
 SHEET 1 OF 1

DWG./PART NO. 0M14222-2