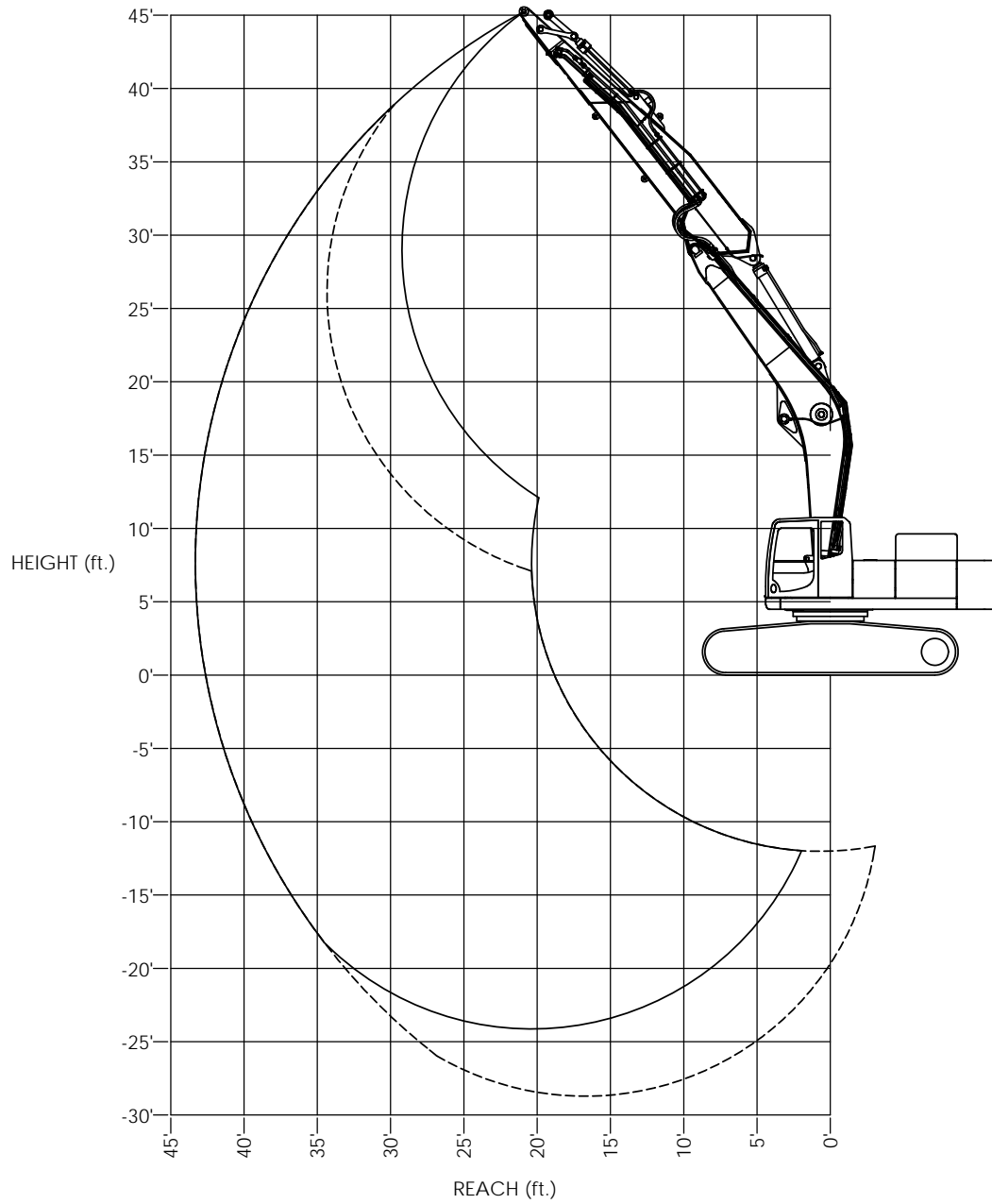


REVISIONS				
ZONE	REV.	DESCRIPTION	DATE	APPROVED



CONFIGURATION:
 -SK500LC-9 - 23'-0" BOOM (WITH DUEL PIN
 POSITIONS FOR BOOM CYLINDERS)
 -20' STICK WITH SK350 TIP

----- HOIST CYLINDERS ON UPPER PIVOT
 _____ HOIST CYLINDERS ON LOWER PIVOT

MATERIAL:		



4805 SCOOPY LANE NW
 CARROLL, OHIO 43112
 740-654-5304

The Cutting Edge of Customer Service

<small>PROPRIETARY AND CONFIDENTIAL THE INFORMATION CONTAINED HEREIN IS THE SOLE PROPERTY OF COMPANY WRENCH. ANY REPRODUCTION OR DISSEMINATION OF THIS INFORMATION WITHOUT THE WRITTEN PERMISSION OF COMPANY WRENCH IS PROHIBITED.</small>	<small>UNLESS OTHERWISE SPECIFIED DIMENSIONS TO DIMENSIONS ARE AS FOLLOWS:</small>	TITLE:
	<small>DECIMAL: .0001" FRACTIONAL: 1/16" ANGLE: .1°</small>	SK500LC-9 - 20' STICK RANGE
<small>WEIGHT: #</small>	<small>SCALE: 1:48</small>	<small>SIZE: D</small>
<small>SHEET 1 OF 1</small>	<small>DWG./PART NO.</small>	