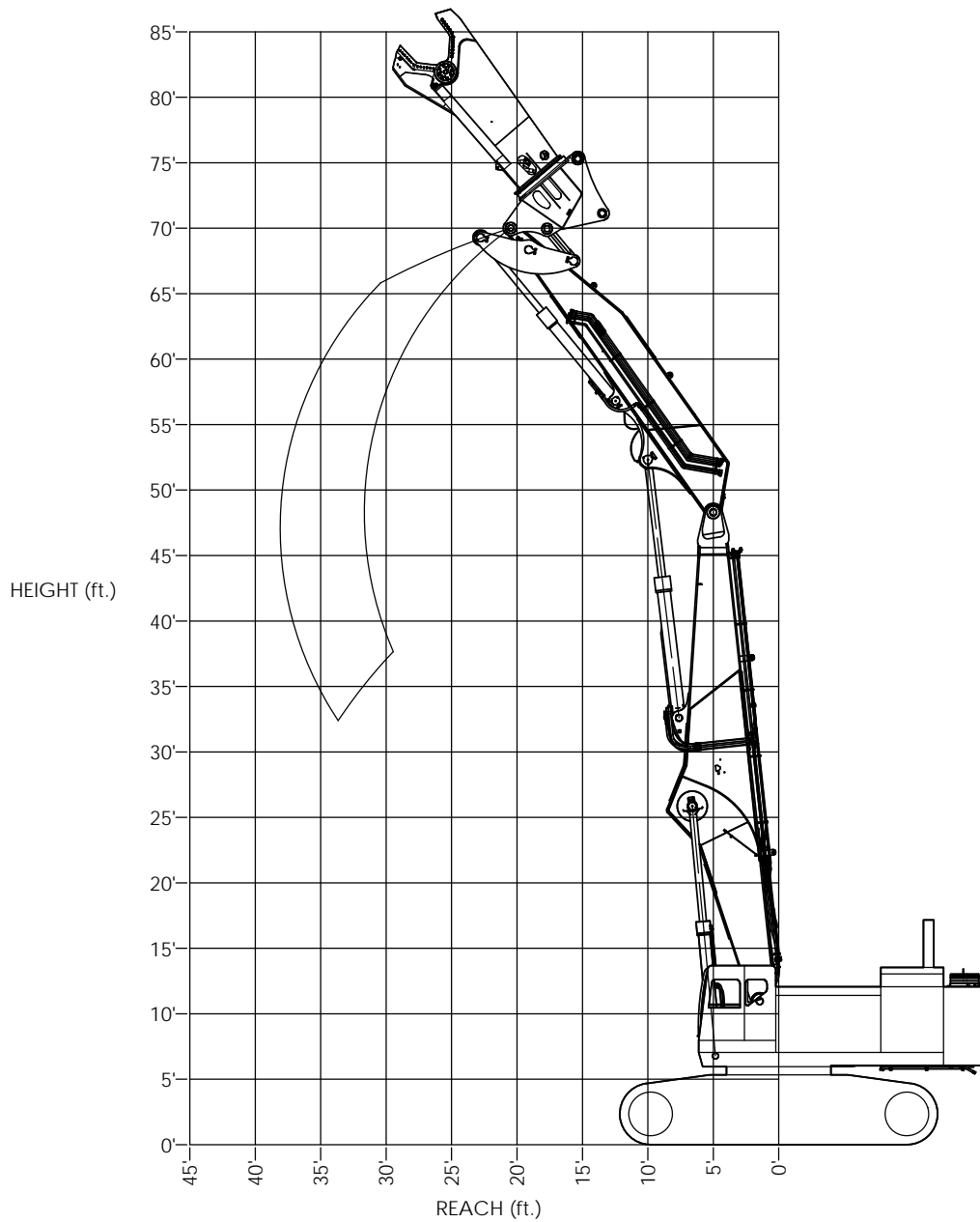


REVISIONS				
ZONE	REV.	DESCRIPTION	DATE	APPROVED



CONFIGURATION:

- 37'-6" STRAIGHTENED & STRETCHED PC1250-8 BOOM
- 26'-8" ARM WITH PC1250-8 TIP
- KOMATSU OEM BOOM HOIST CYLINDERS
- KOMATSU OEM ARM CYLINDER
- KOMATSU OEM BUCKET CYLINDER & H-LINK FROM 18'-8" ARM
- 10° FORWARD BOOM RANGE FROM FULL UP
- 10,000# ADDITIONAL COUNTERWEIGHT
- 34,400# TOOL CAPACITY IN HIGH REACH RANGE

MATERIAL:		



4805 SCOOPY LANE NW
CARROLL, OHIO 43112
740-654-5304

The Cutting Edge of Customer Service

<small>PROFESSIONAL AND CONFIDENTIAL THE INFORMATION CONTAINED IN THIS DRAWING IS THE SOLE PROPERTY OF COMPANY WRENCH. ANY REPRODUCTION WITHOUT THE WRITTEN PERMISSION OF COMPANY WRENCH IS PROHIBITED.</small>	<small>UNLESS OTHERWISE SPECIFIED DIMENSIONS TO DIMENSIONS ARE AS FOLLOWS:</small>	TITLE:
	<small>DECIMAL: 80.015" FRACTIONAL: 1/16" ANGLE: 1°</small>	PC1250LC-8 - 70', 2-PIECE H.R. RANGE
WEIGHT: #	SCALE: 1:55	SIZE: D
	SHEET 1 OF 1	DWG./PART NO. OM18141-3