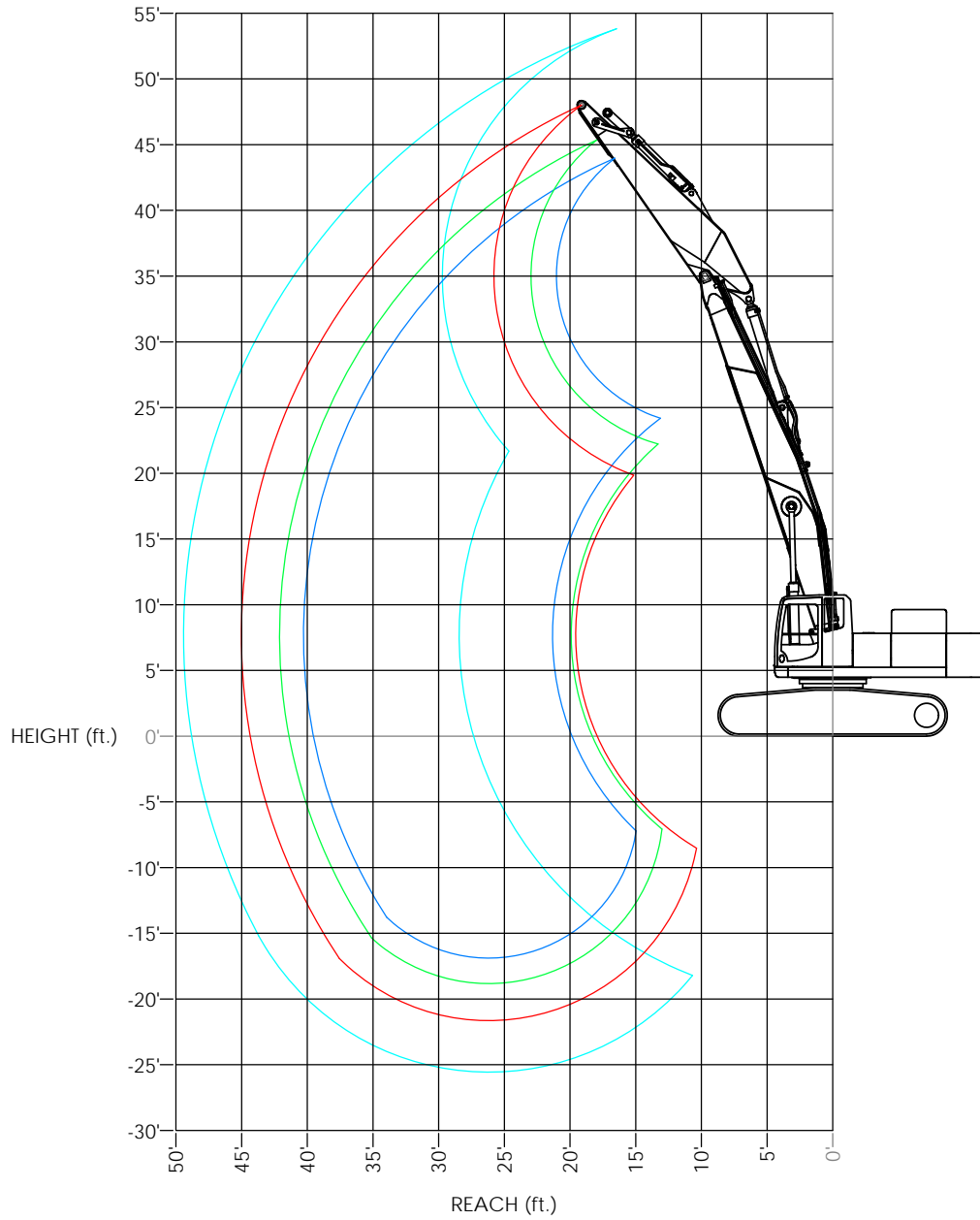


REVISIONS				
ZONE	REV.	DESCRIPTION	DATE	APPROVED



TOOL \ STICK	20'-0" CUSTOM STICK W/SK350 TIP	16'-1" FACTORY STICK	13'-3" FACTORY STICK	11'-4" FACTORY STICK
HDR70	A			
UP30R	A			
MSD1500R	A			
MDP35R (CC JAW)	A			
HDR100		A	A	A
LMB8055		A	A	A
MSD2000R		A	A	A
MSD2250R		X	Y	A
MDP50R (CC JAW)		X	Y	A

A = APPROVED OVER ENTIRE RANGE WITH HEAVY LIFT ON
X = APPROVED TO A MAXIMUM HORIZONTAL REACH OF 35' ONLY WITH HEAVY LIFT ON
Y = APPROVED ABOVE GROUND LEVEL ONLY WITH HEAVY LIFT ON

CONFIGURATION:
28'-9" STRAIGHT BOOM
20'-0" CUSTOM STICK W/SK350 TIP
16'-1" FACTORY STICK (SHOWN)
13'-3" FACTORY STICK
11'-4" FACTORY STICK
12,600# ADDITIONAL COUNTERWEIGHT

MATERIAL:		



4805 SCOOPY LANE NW
CARROLL, OHIO 43112
740-654-5304

The Cutting Edge of Customer Service

<small>PROFESSIONAL AND CONFIDENTIAL THE INFORMATION CONTAINED HEREIN IS THE PROPERTY OF COMPANY WRENCH. ANY REPRODUCTION OR USE OF THIS INFORMATION WITHOUT THE WRITTEN PERMISSION OF COMPANY WRENCH IS PROHIBITED.</small>	<small>UNLESS OTHERWISE SPECIFIED DIMENSIONS TO DIMENSIONS ARE AS FOLLOWS:</small>	<small>TITLE:</small> SK500LC - 28'-9" STR. BOOM RANGE
	<small>DECIMAL: 80/1016" FRACTIONAL: 1/16" ANGLES: 3/4"</small>	<small>SCALE: 1:55</small> D
<small>WEIGHT:</small>	<small>SHEET 1 OF 1</small>	